



Rubapave® as Top-Coat on a Resurfaced Driveway

TDC is requesting one-time approval for installation of Rubapave on newly resurfaced asphalt driveway of residence in **606 Alminar Ave, Coral Gables**

What is Rubapave?



- Developed in the late 90s
- First used on the walkways and cart paths at the Valderrama Golf Club in Spain
- Combines SBR rubber sourced from recycled tires and a specially formulated polyurethane binder
- Can be installed over concrete, asphalt, interlocking brick, stone/aggregate, etc.



Rubapave Benefits



- UV Stable: Long lasting color, no yearly seal coating
- No Cracks: Expands and contracts with substrate as temperature changes
- Non-Slip: Properties amplified when wet with mixed-in EPDM rubber
- Safe for All Ages: Soft surface absorbs shock and reduces chance of injury if a fall should occur
- Durable: Withstands heavy vehicle traffic, not damaged by shoveling or snow plowing
- Quick Installation: Smooth seamless surface created in one day without tear-out necessary





Before



After

4821 SW 147th Pl. Miami



8180 SW 106th St. Miami



13215 SW 119th St. Miami

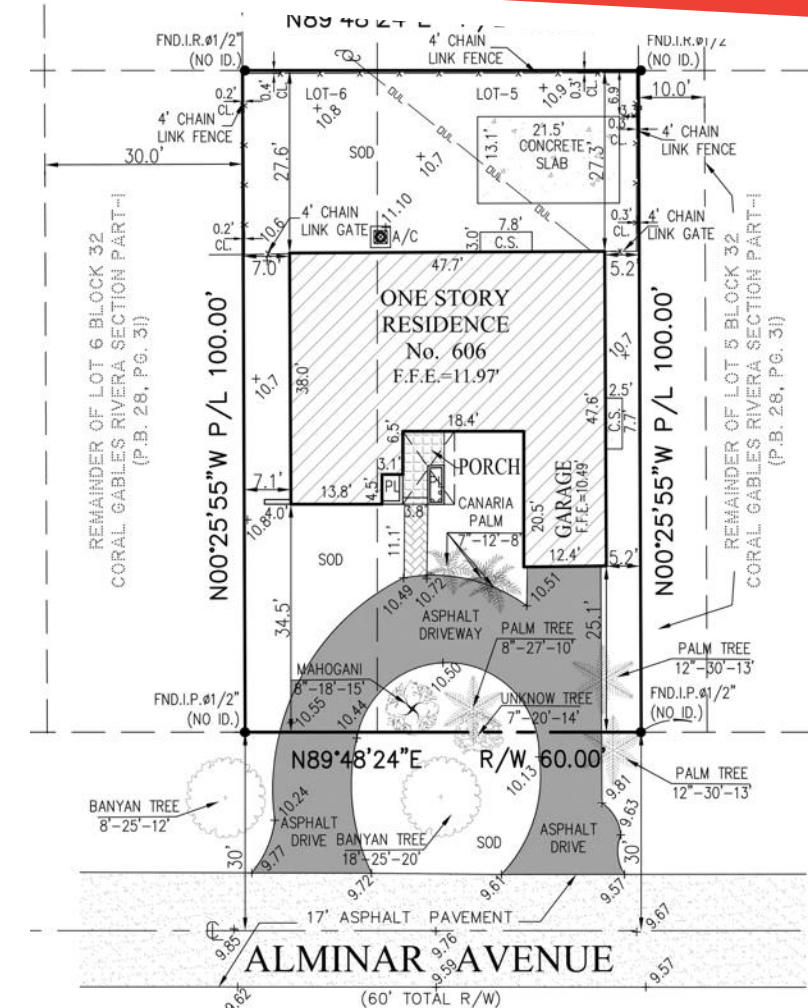


13500 SW 69th Ct. Pinecrest

606 Alminar Ave. Project



1. Repair damage caused by tree roots
2. Resurface existing driveway with hot asphalt
3. It will not modify or expand existing driveway layout
4. Wait 60 days for asphalt to cure
5. Install Rubapave® as an overlay to the new asphalt surface



606 Alminar Ave



606 Alminar Ave with Rubapave



Installing Rubapave



Mixing Rubber and Resin

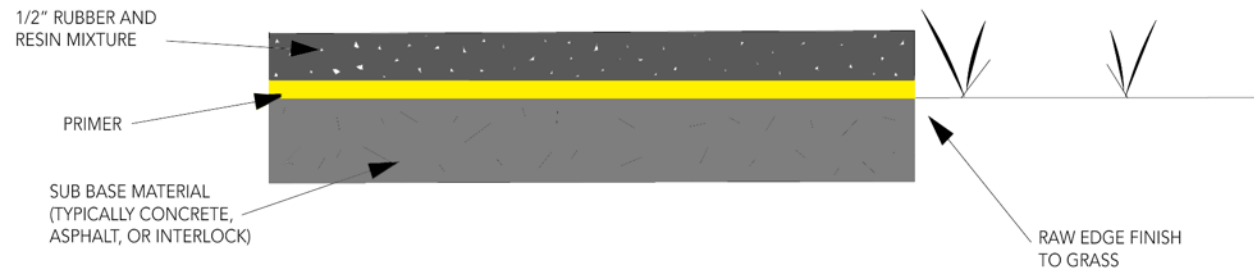


Troweling Poured-in-Place Rubber

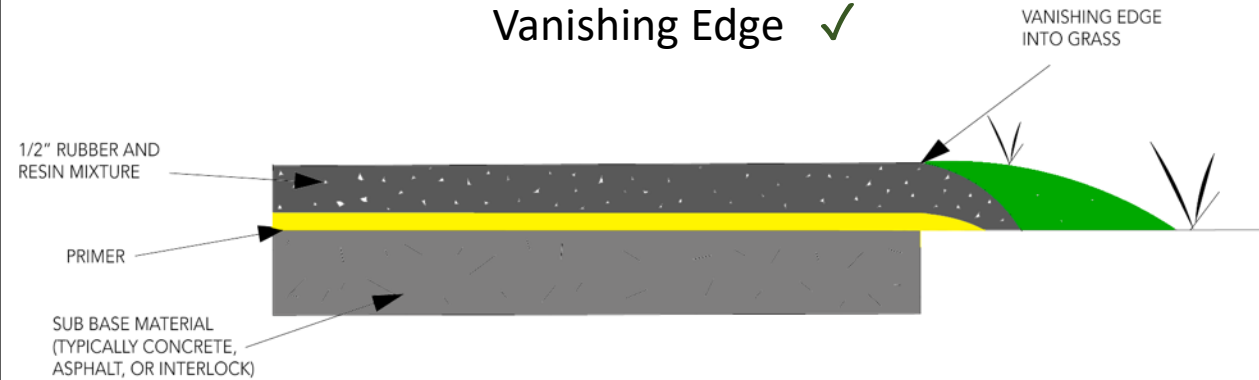
Edge Finishing Options



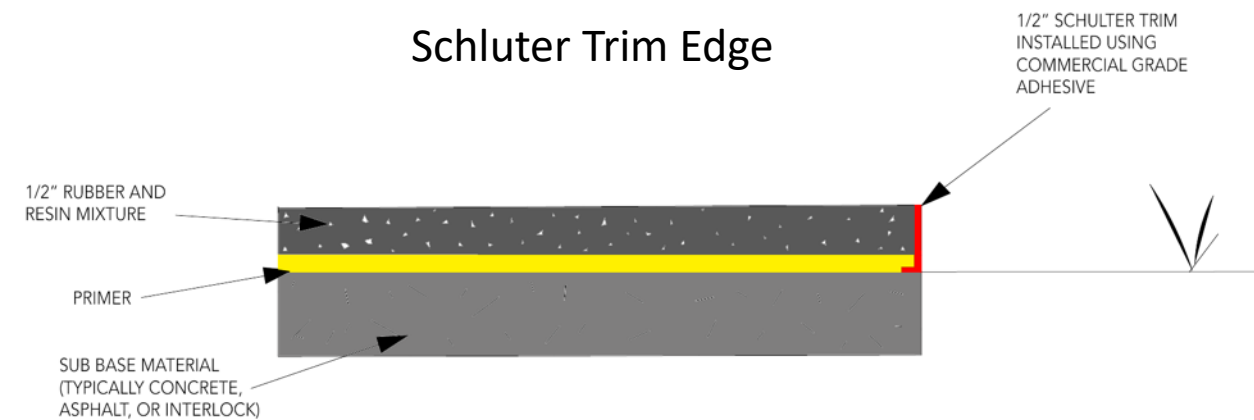
Raw Edge



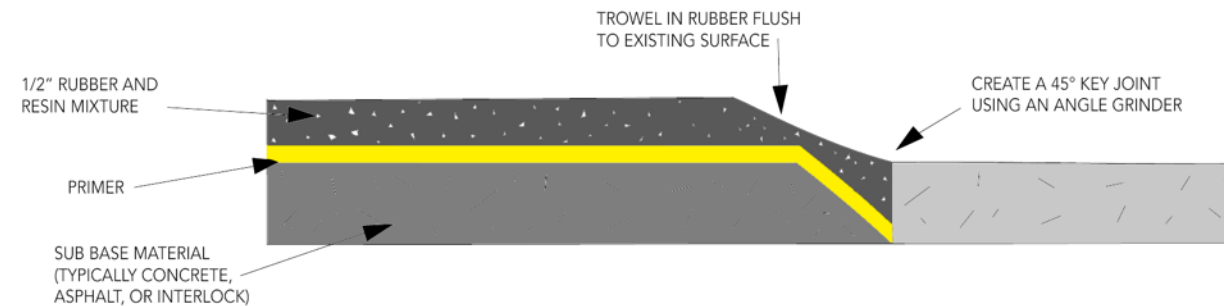
Vanishing Edge ✓



Schluter Trim Edge



Finishing to Curb ✓



600 Alminar Ave



601 Alminar Ave



610 Vilabella Ave



614 Alminar Ave

