

Miami, April 14, 2021

Board of Architects  
Development Services  
City of Coral Gables  
405 Biltmore Way, 3<sup>rd</sup> Floor  
Coral Gables Florida 33134

Dear sir / madam,

My wife Lesley and I own The Driveway Company of Coral Gables, a franchise of TDC Franchising, LLC. For over 30 years, The Driveway Company has been the leader in repair and maintenance of driveways. Stellar Brands, the parent company has acquired Softroc and incorporated into its portfolio of franchises. As a result, and after weeks of training, we are now the only certified installers of Softroc in South Florida.

Softroc is a rubberized safety surface that is poured-in-place over an existing hard surface, like concrete, asphalt, pavers and even wood. In addition to being anti-microbial, impact and slip resistant and comfortable to the feet, it will never crack as the rubber surface is flexible and allows for movement of the underlying surface as temperature changes. This material covers cracked, broken and shifted surfaces directly over top of the foundation or surface without altering its integrity. Softroc has been utilized in North America in commercial applications for over 30 years in hotels, nursing homes, commercial pools, golf courses, playgrounds, waterparks, etc. After 30+ years of doing commercial applications, two years ago, Softroc expanded its strategy to focus also on the residential market. Softroc comes in a variety of colors that can be applied as solid, pre-mixed or custom mixed colors to create a unique design.

We are requesting the City of Coral Gables for Softroc to become an approved overlay material for driveways, walkways, patios, terraces, pool decks, porches, etc. in residential and commercial applications. We invite any questions you may have and ask for the opportunity to present the material in person or virtually via videoconference. For this purpose, we are including product documentation and samples of colors we would like approved for use in your city.

We appreciate your assistance and support in this matter. Thank you for your time and consideration.

Sincerely,



Daniel Almenara  
Owner and General Manager  
The Driveway Company of Coral Gables



# Softroc

## Rubber Safety Surfacing





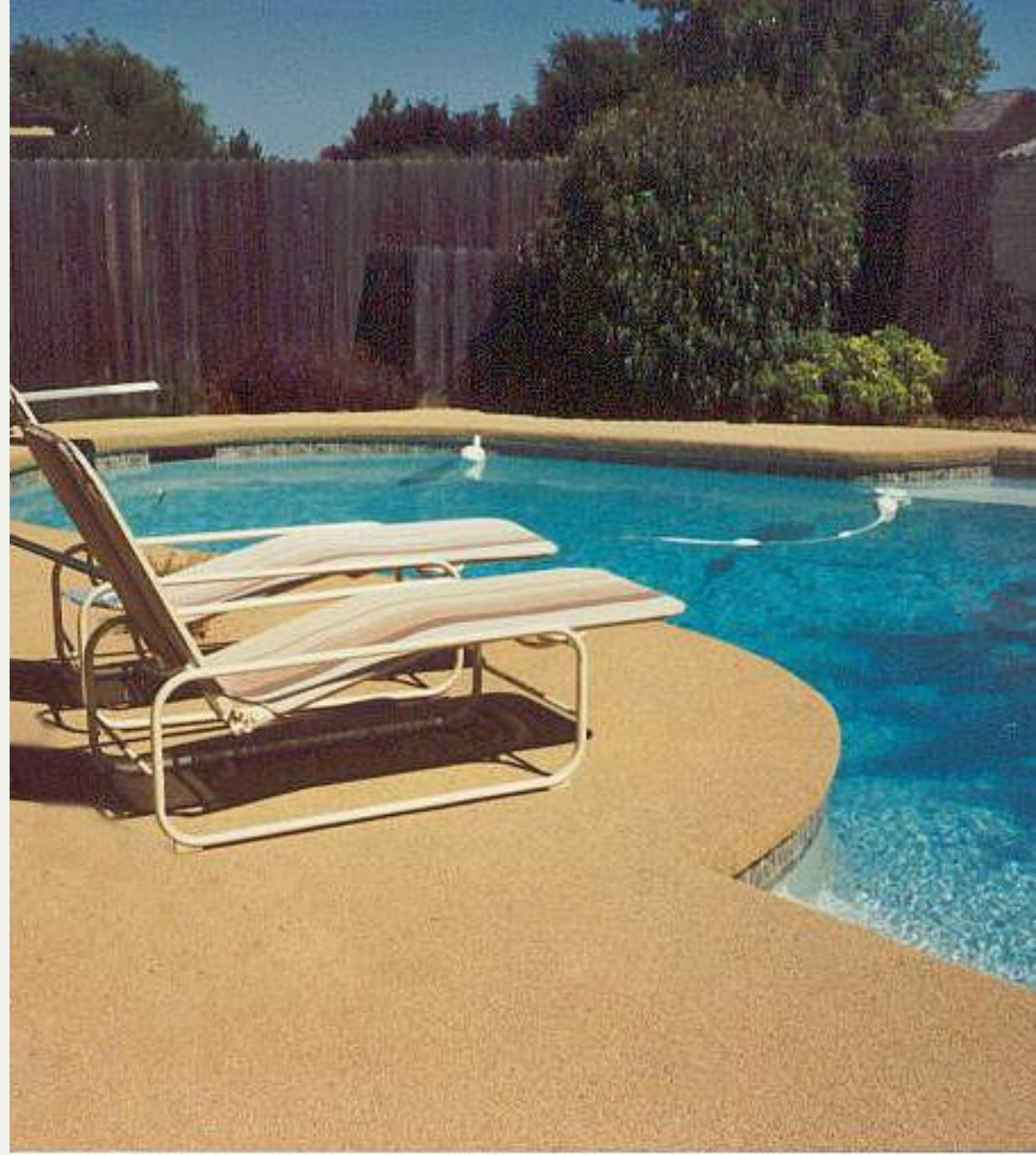
# History of Rubber Surfacing

## BRINGING RUBBER SAFETY SURFACING TO NORTH AMERICA

Rubber Safety Surfacing was first brought to North America in 1983.

There was a need for a flooring alternative that was durable, flexible, long lasting, and safe - especially for residential homes.

Rubber Safety Surfacing began being installed on pool decks and revolutionized the industry once again.





# Softroc Installation

WHAT YOU NEED TO KNOW FROM US



# Substrate

THE FOUNDATION TO WHICH  
RUBBER SURFACE IS APPLIED TO

- Rubber Safety Surfacing can be installed over a variety of substrates
  - Concrete
  - Asphalt
  - Steel
  - Interlocking brick





# Rubber

EPDM/TPV

- Softroc EPDM Rubber Granules are available in a variety of colors
- It is a soft rubber that is durable and is perfect for commercial and residential installations
- The granules range in size from 1mm to 4mm





# EPDM

ETHYLENE PROPYLENE NON  
CONJUGATED DIENE MONOMER

- Synthetic rubber
- Better resistor of heat and light due to the saturated chain of the polyethylene type
- It can be formulated to resist temperatures from -40°C to 150°C





# SBR

STYRENE BUTADIENE RUBBER

- Is recycled tire materials for fill or playground bases





# Priming

A THIN COAT OF PRIMER APPLIED TO THE SUBSTRATE

- A mixture of resin applied to the substrate before the Rubber Safety Surfacing is applied
- The substrate must be dry and clean before priming begins





# Resin

STANDARD / UV COMMERCIAL

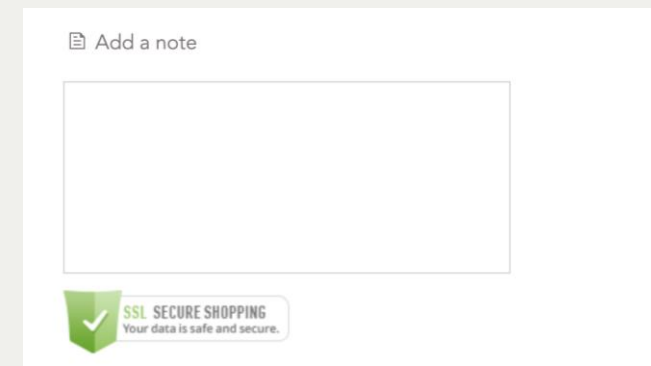
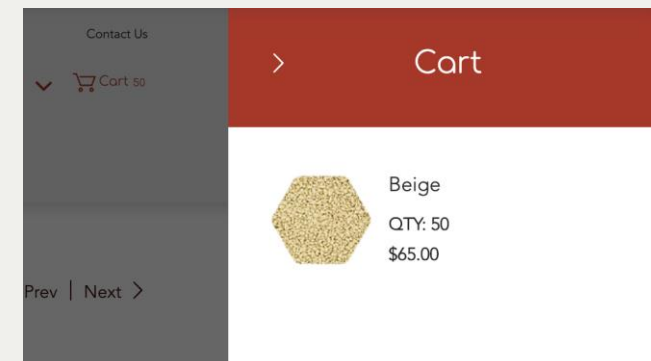
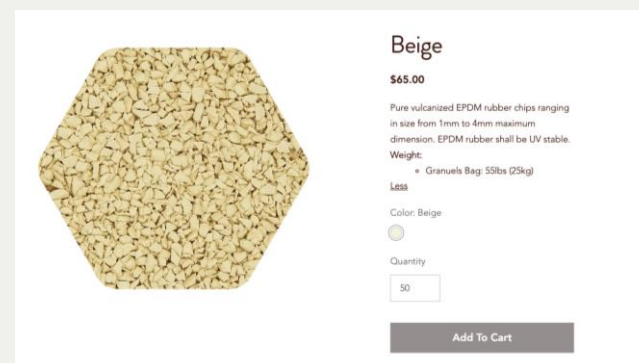
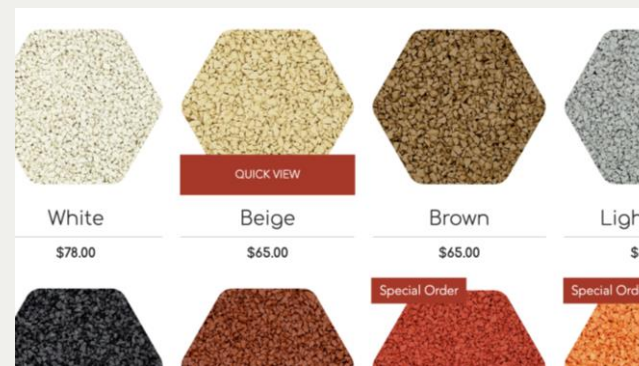
- MID (Standard) and HD/Aliphatic (UV) Urethane is a one-part moisture cure resin used for binding the rubber granules together
- Resin must be stored above 32°F
- During installation the air temperature must remain above 40°F
- Checks should be done periodically to ensure correct temperature
- If installed below 40°F de-lamination can occur





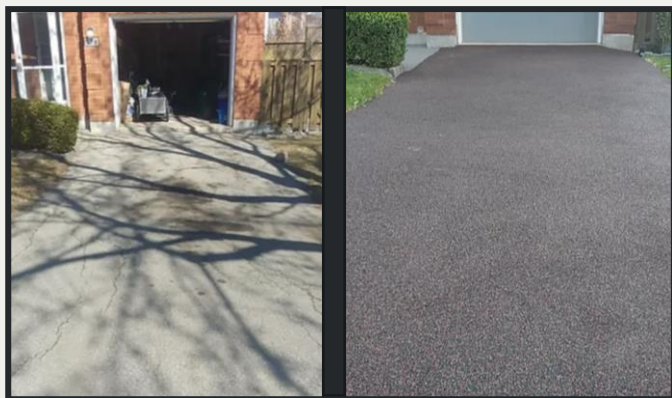
# Our Website

1. Choose Your Colors Online
2. Checkout the Project Gallery
3. Find a Local Contractor
4. Get a Quote





# PROJECTS - BEFORE & AFTER



BEFORE



AFTER







# THANK YOU

[WWW.SOFTROC.COM](http://WWW.SOFTROC.COM)





The background of the entire page is a photograph of a waterfront promenade. In the foreground, a wide, light-colored gravel path leads towards the water. To the right, there are several lounge chairs with woven, light-brown frames and dark cushions, arranged under the shade of tall palm trees. In the distance, across the water, a city skyline with several buildings is visible under a sky filled with soft, white clouds. A few birds are seen flying in the sky.

## THE EXPERTS IN POURED-IN- PLACE RUBBER SURFACING

Installing worldwide  
since 1983.



## TRUST IN THE ORIGINAL

We pride ourselves as being the market leader in poured-in-place Rubber Safety Surfacing.

Providing expert surfacing worldwide since 1983.

# CONTENTS

4	WHAT IS SOFTROC?
8	SOFTROC APPLICATIONS
10	POOL DECKS & PATIOS
16	ACTIVITIES & FITNESS FACILITIES
20	SPLASH PADS
22	PLAYGROUNDS
24	CUSTOM DESIGNS & LOGOS
26	GOLF COURSES
28	GARAGES & DRIVEWAYS
30	ANIMAL CARE FACILITIES
32	PATHWAYS & STEPS
35	SOFTROC COLORS
36	SOFTROC PRODUCT SPECIFICATIONS
41	CONTACT US







# WHAT IS SOFTROC?

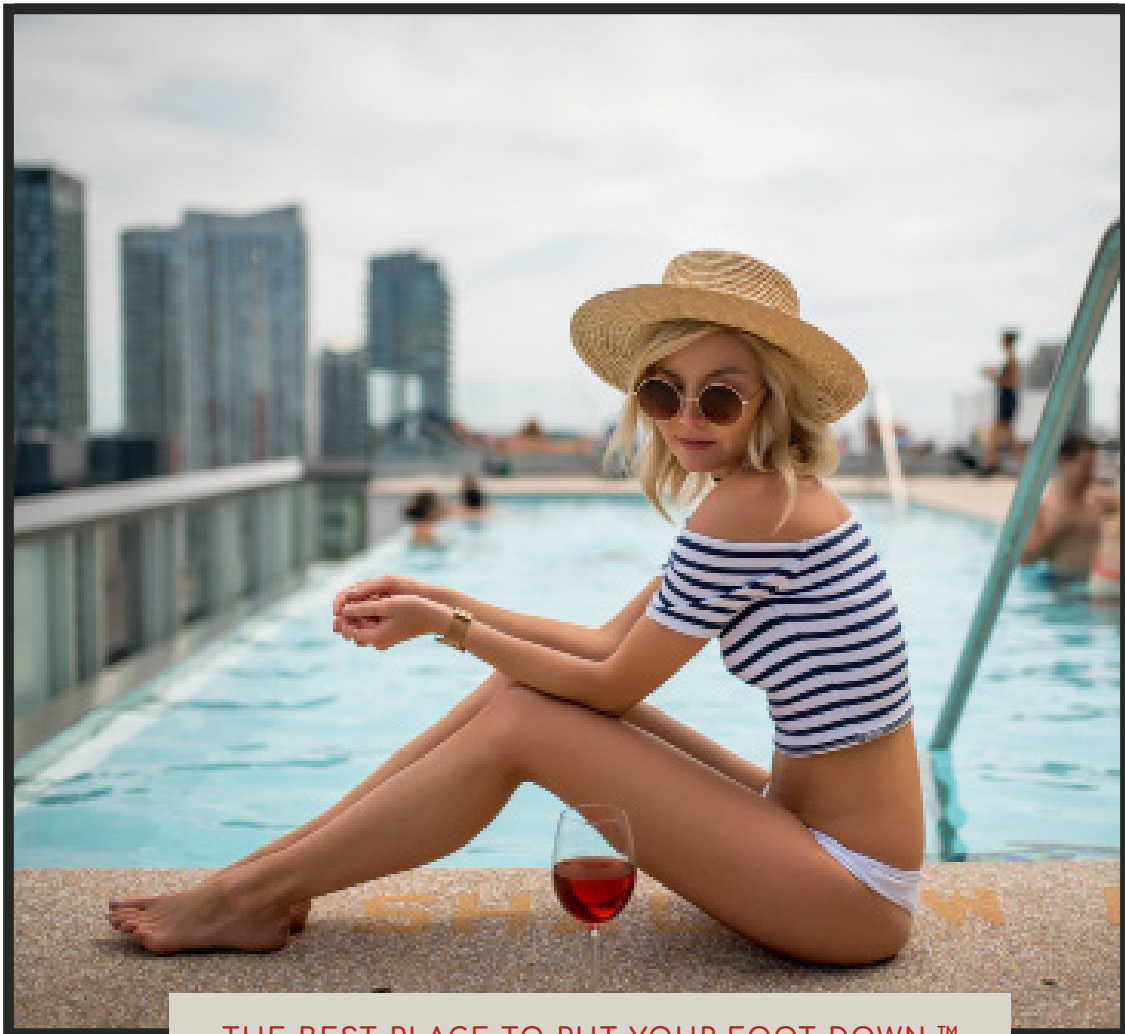
A NEW LEVEL OF COMFORT

## WE ARE UNLIKE ANY OTHER RESURFACING PRODUCT

Rubber surfacing with Softroc combines high tech polymer resins with EPDM rubber granules to create a resilient, non-skid surface that is virtually indestructible. Softroc is professionally installed over your new or existing surface, and is available in a wide range of colors.







THE BEST PLACE TO PUT YOUR FOOT DOWN.™

Originally innovated as poured-in-place Rubber Safety Surfacing for swimming pool decks, Softroc quickly grew its applications and today you will find Softroc being used in a variety of applications from water parks, playgrounds, schools, childcare facilities, golf clubs and hotels, private and public housing associations, and so much more.





# OUR ROOTS ARE AS STRONG AS OUR SURFACES.

With over 3 decades of installation experience, Softroc is a second generation Rubber Safety Surfacing company that has been providing professional and fast installation worldwide.



## Softroc is proven.

Softroc rubber surfacing has been installed in a wide variety of commercial and residential environments such as water parks, indoor and outdoor swimming pool decks, and leisure centers.

## Fast, professional installation.

Softroc is mixed on site and troweled by craftsmen to a uniform thickness over your new or existing surface to create a beautiful, seamless finish. Special rubber safety surfacing materials are skilfully used for custom logos and designs. Softroc can also be applied to angular surfaces, like coping around a pool or stair faces.

## The all-around rubber surface.

Softroc adheres directly to any solid-substrate materials including concrete, asphalt, epoxy, stone, brick, steel, tarmac, chipboard, and aluminium.





# SOFTROC APPLICATIONS

EXPRESS YOUR CREATIVITY



POOL DECKS & PATIOS



ACTIVITIES & FITNESS FACILITIES



SPLASH PADS



PLAYGROUNDS



CUSTOM DESIGNS & LOGOS



GOLF COURSES



GARAGES & DRIVEWAYS



PATHWAYS & STEPS



ANIMAL CARE FACILITIES





All of the different applications by Softroc will provide you with multiple benefits. We have developed the Softroc system over many years and we are confident it will surpass your expectations.



# POOL DECKS & PATIOS



## THE RUBBER SURFACE THAT STRETCHES

Remarkably, Softroc stretches to accommodate most substrate cracks caused by ground movement. Softroc rubber safety surfacing also expands and contracts with temperature changes.

## RUBBER SURFACING THAT'S EASY TO MAINTAIN

Softroc is stain resistant and cleans with normal soap and water. Should the occasion become necessary, repairs to a Softroc applied rubber surface are easily accomplished by an installation specialist.

With over 35 years of worldwide experience installing quality surfaces, Softroc will exceed every expectation.





## Safety is our priority.

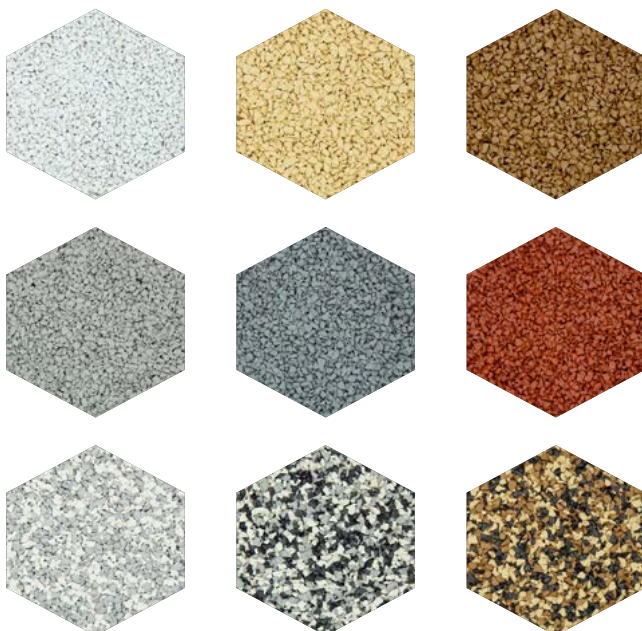
Softroc is skid-resistant when wet, much like your bath mat which makes rubber safety surfacing perfect for wet deck applications.

Resurface an old, cracked or tired pool surround or create a brand new surface with Softroc.

Softroc is unlike any other surface. It is long lasting, safe for children, easy to maintain, and you can expect a fast installation.



## MOST POPULAR COLORS



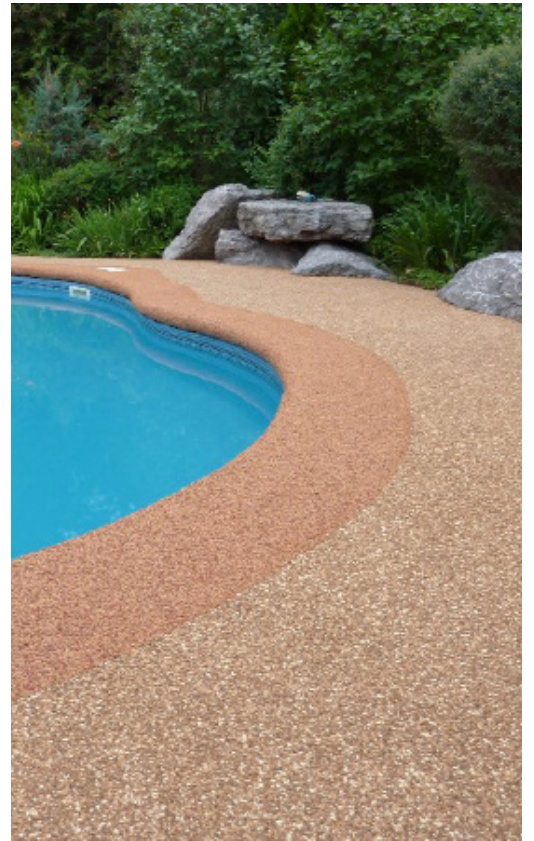
Pools are a large liability, with incidents occurring at an increasingly high rate annually.

Stop problems where they start and protect others and yourself by getting a safety surface that works, lasts and looks beautiful!





# RESIDENTIAL POOL DECKS







Softroc pool decks are poured on site and hand troweled to create the perfect outdoor space you are looking for. We can create any color you like, and our experienced installers will mix and hand trowel your new surface on site. No paying to remove your existing or damaged surface!

Create a beautiful, seamless, soft to walk on pool deck that will be cool in the sun, beautiful to look at, impact resistant, and won't crack like concrete. Feel relaxed about your little ones playing and running, since Softroc is even more slip resistant when wet!



Slip  
resistant



Easy to  
clean



Color  
Options



Trowelled by  
hand



No more  
cracks



Stays  
cool



Comfortable



Durable



Installed by  
pros



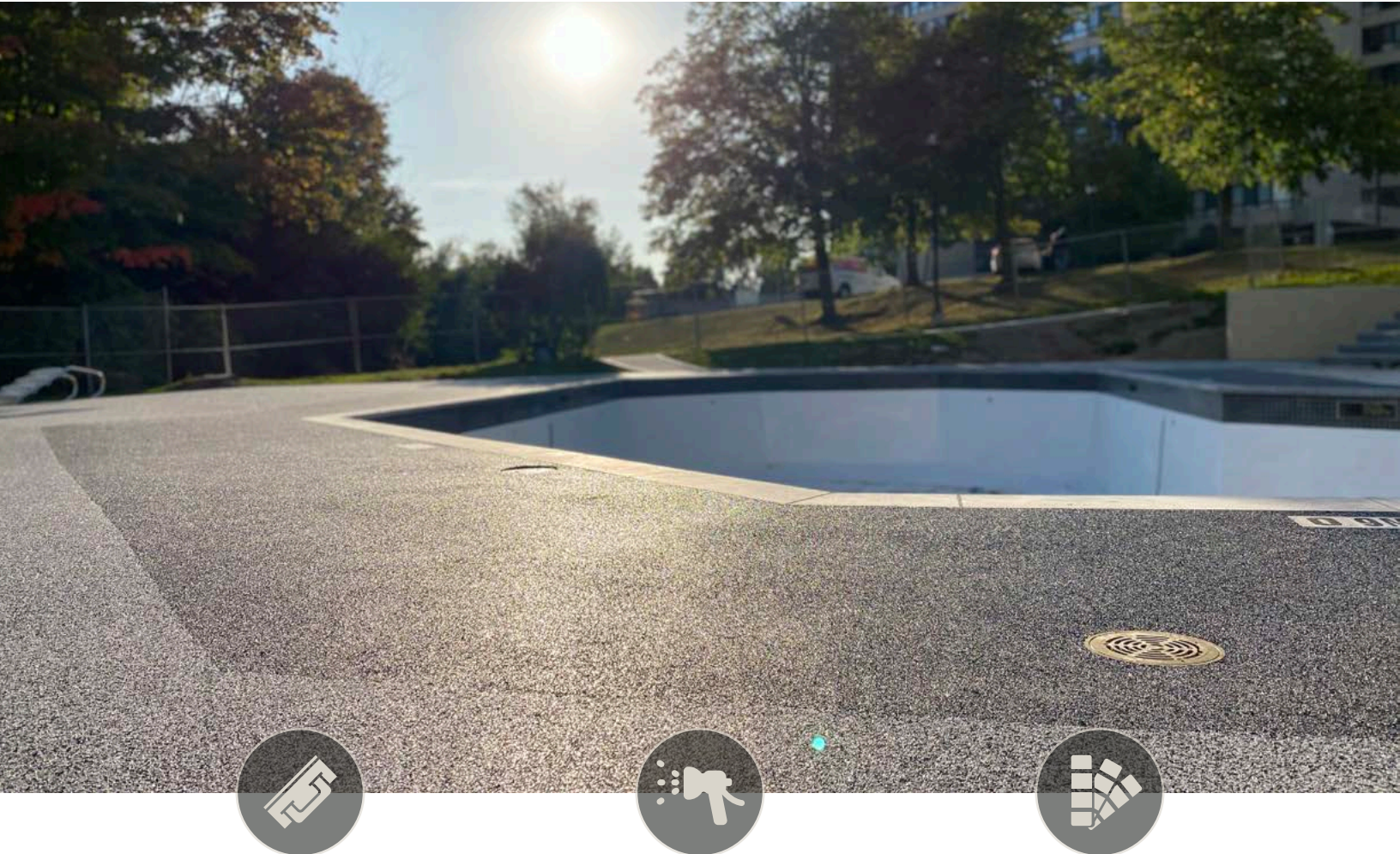
Fast  
installation



---

# POURED-IN-PLACE

---



Commonly referred to as “poured-in-place”, Softroc is hand troweled over imperfections and minor undulations creating a seamless, carpet-like surface that will last for years.



Softroc is anti-fungal, anti-bacterial and easy to maintain. Surfaces can be cleaned with normal soap and water making it easy to keep your deck always looking new!



Copings and borders can be enhanced with colors and custom designs and logos or depth markings can be troweled right into the surface. Softroc is the ideal surfacing solution for the home, workplace & recreational facility.





## COMMERCIAL POOL DECKS





## ACTIVITIES & FITNESS FACILITIES



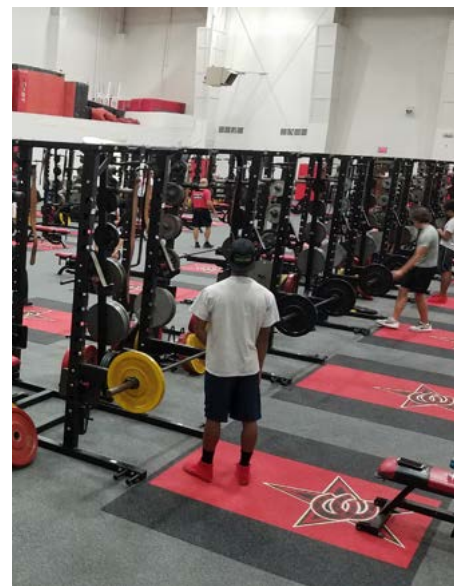
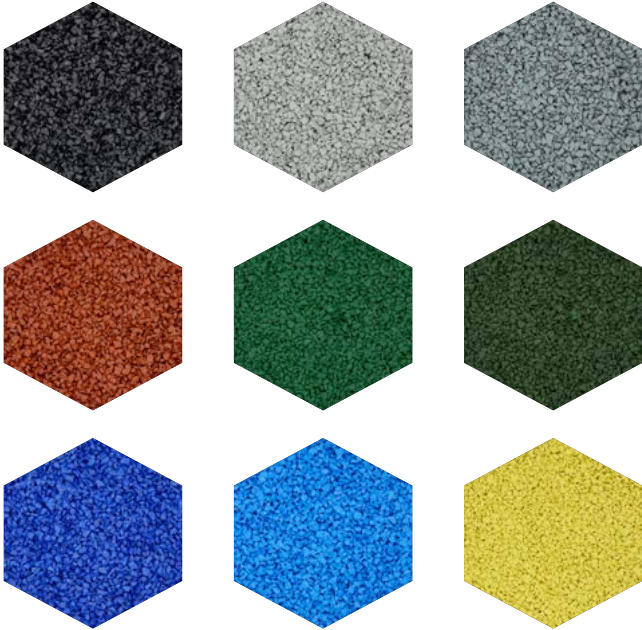
Softroc for activity courts is designed to get the maximum amount of play value in your space. Softroc is available with most popular game court markings. All markings and lines are embedded into the surface and installed to regulation standards appropriate to the sport.

When installed in a gym or fitness facility, Softroc not only provides durability and shock absorption, it also ensures that heavy equipment will not damage the training surface.

Softroc is made of a close cell polymer that cannot accept the growth of bacteria inside of it, therefore bacteria and fungi cannot damage or deteriorate this product.



## MOST POPULAR COLORS





# CUSTOM WORK



Slip  
resistant



Easy to  
clean



Color  
Options



Trowelled by  
hand



Installed by  
pros



No more  
cracks



Stays  
cool



Comfortable



Durable



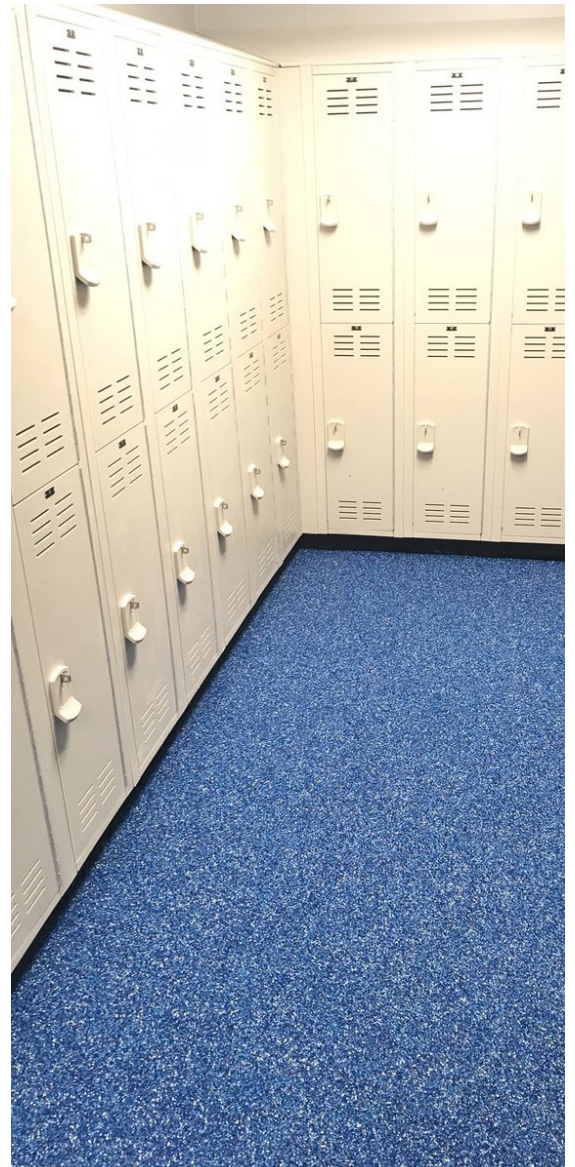
Fast  
installation





COMFORTABLE SURFACE

Softroc is a company that has extensive experience in the rubber safety surfacing industry. We separate ourselves from the rest because of our beautiful custom design work. From logos to accents to floor patterns, our design team will draw up a personalized flooring project specifically to cater to your personality. With every Softroc job you will see our creativity and outside the box, artistic proficiency.





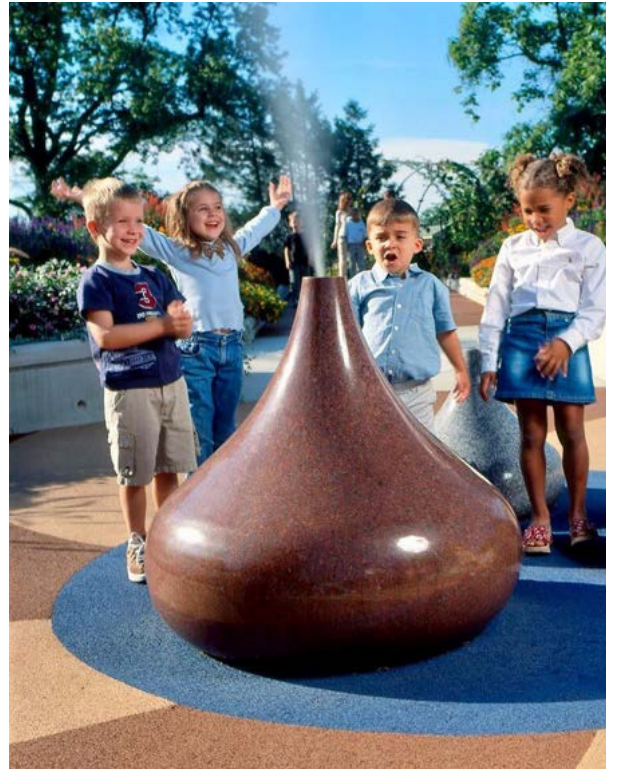
# SPLASH PADS

Softroc has a soft, porous surface which aids in preventing water from dangerously accumulating, while it's slip resistant and impact absorbing features help prevent broken bones should a tumble be unavoidable.

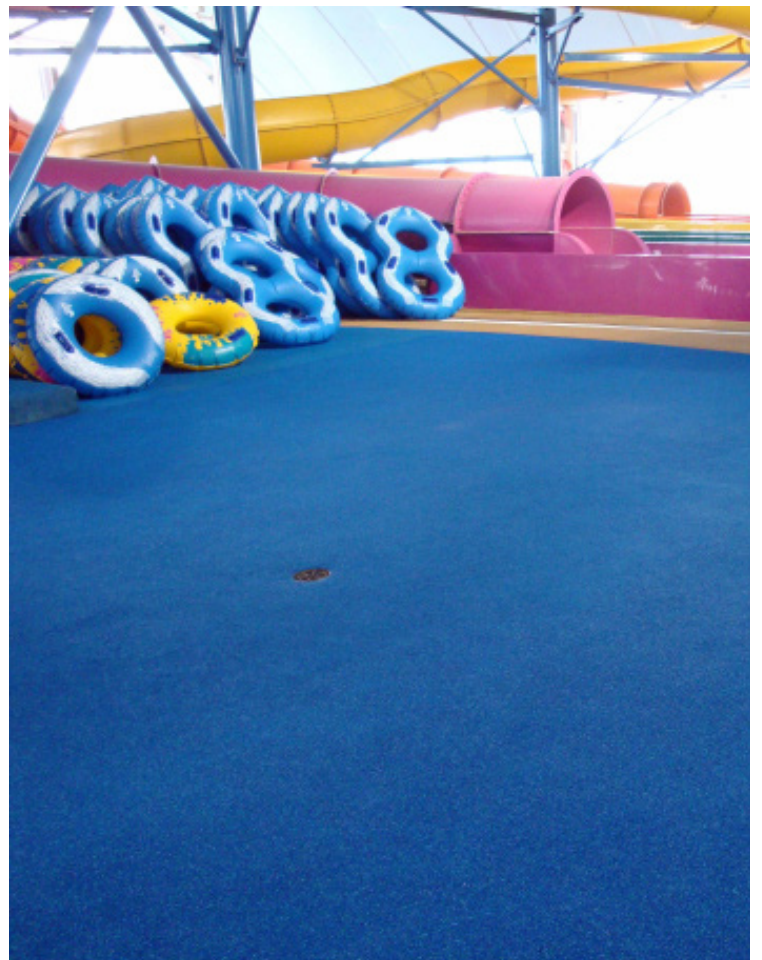
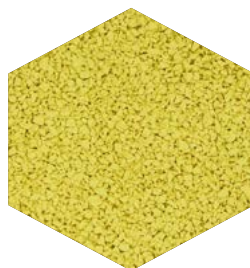
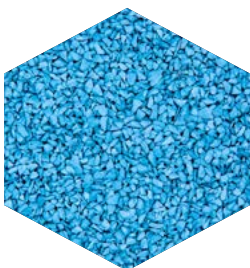
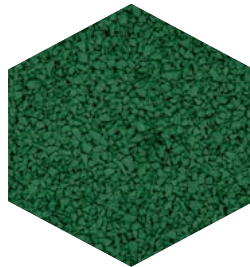
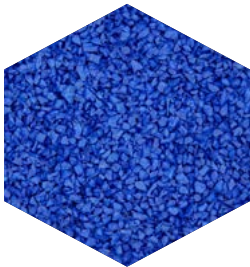
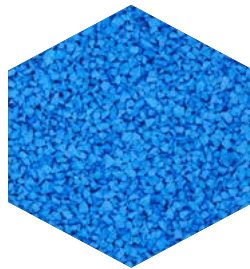
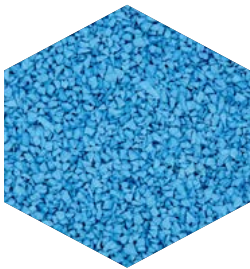




# A WIDE VARIETY OF COLORS & DESIGNS



## MOST POPULAR COLORS





# PLAYGROUNDS



Softroc is suitable for both indoor and outdoor play areas. It is long lasting, low maintenance, and highly attractive.







## ENHANCE YOUR PLAY AREA WITH SOFTROC

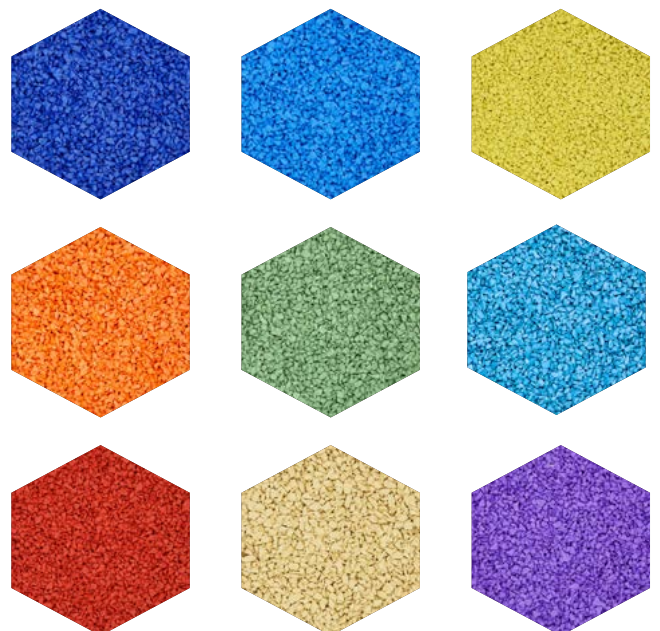
Softroc is a versatile, hard-wearing surface and can be installed to any depth requirements to meet all municipal, provincial and federal guidelines.

Our playground system provides the necessary cushion and shock absorbency to create a safe and fun environment for all, making it a sure choice for children's play areas.

With a wide variety of colors to choose from, custom logos and designs can easily be embedded in your playground.



### MOST POPULAR COLORS





## CUSTOM DESIGNS & LOGOS



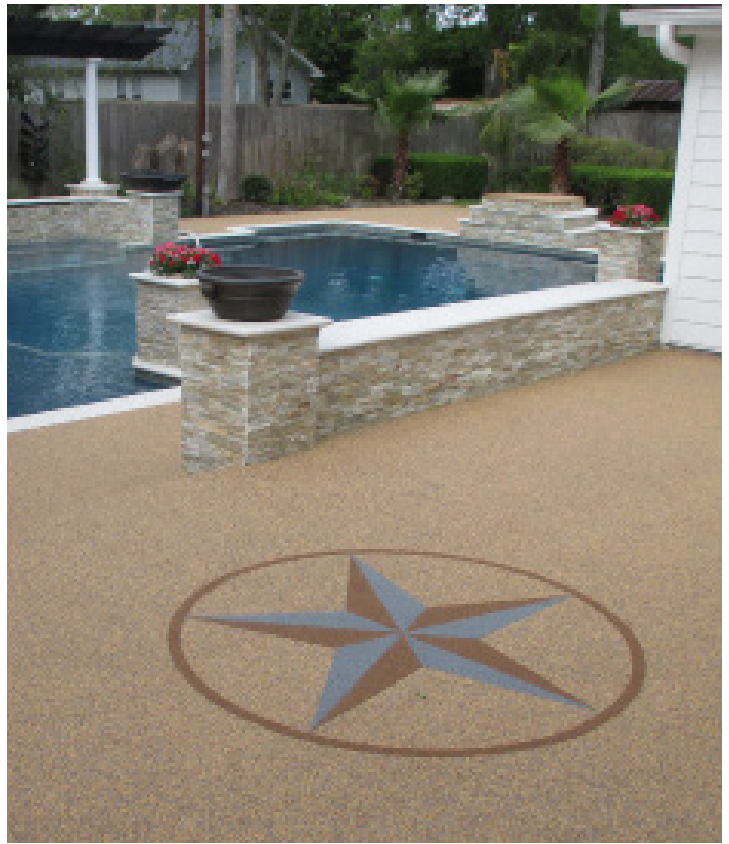
## EMBEDDED DESIGNS

### HAND TROWELED SURFACE

Our professionally trained installers prepare the surface, hand cut the design into the rubber, and trowel each individual color of your design. Depending on the intricacy of the desired design, they might need to wait a day before moving on to the next color to allow some drying time.

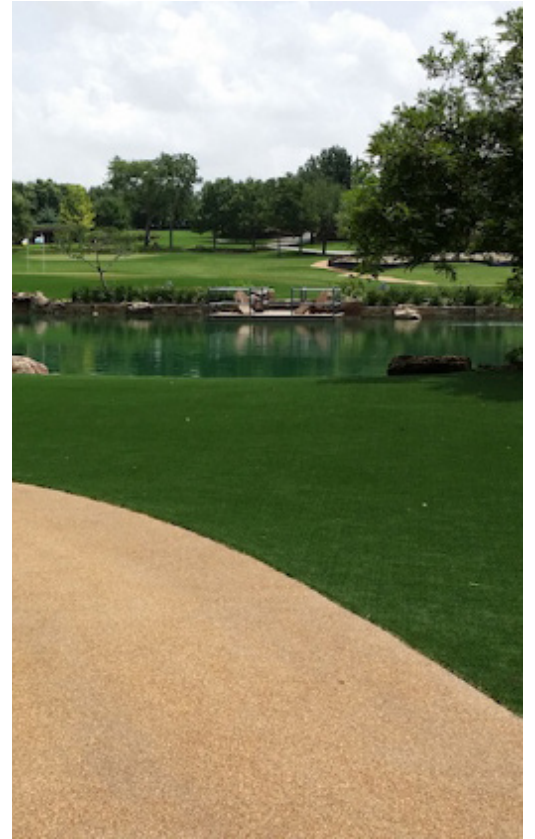
Our rubber is not painted! Each granule is colored all the way through, this is why we are able to cut out pieces of the surface to insert a different colored rubber and your design will remain the same for years to come.







# GOLF COURSES



Softroc transforms uneven pathways into smooth walkways that are less hazardous and more pleasing to the eye.

Our specially formulated and tested resin provides a strong bond to the rubber to resist cleat spikes. It creates a comfortable, durable surface and will decrease noise from foot traffic.

One of the best features about Softroc in golf course pathways is the fact that a golf ball does not bounce on it. Flying golf balls will not be an issue anymore!



Our specially designed paths enhance visual appeal while solving practical problems of access.



# Your club members will thank you!

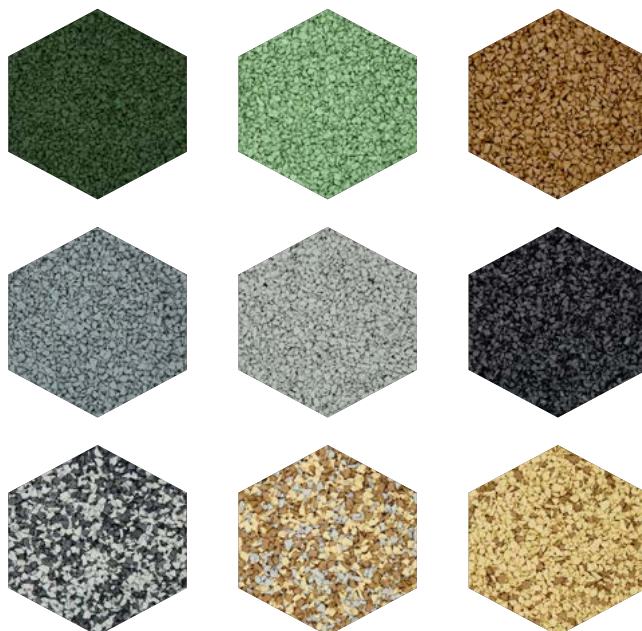


Softroc has been successfully used in golf clubs throughout North America, Australia, and Europe over the past 20 years.

Our customers include The Royal Melbourne Golf club in Australia, Valderrama Golf Club in Spain, Onion Creek Golf Club in Texas, the Markland Woods Golf Club in Canada, and St. Georges Hill Golf Club in England to name a few.



## MOST POPULAR COLORS





## GARAGES & DRIVEWAYS



A durable and reasonably priced option compared to concrete or asphalt.





# The benefits of Softroc.

The special Softroc system used for garages and driveways is an environmentally friendly product that combines high-tech resins with recycled rubber to create a resilient, non-skid surface that is virtually indestructible.

Softroc expands and contracts to accommodate temperature changes and ground movement. It is also resistant to salt or de-icer and allows trouble-free snow removal.





# ANIMAL CARE FACILITIES

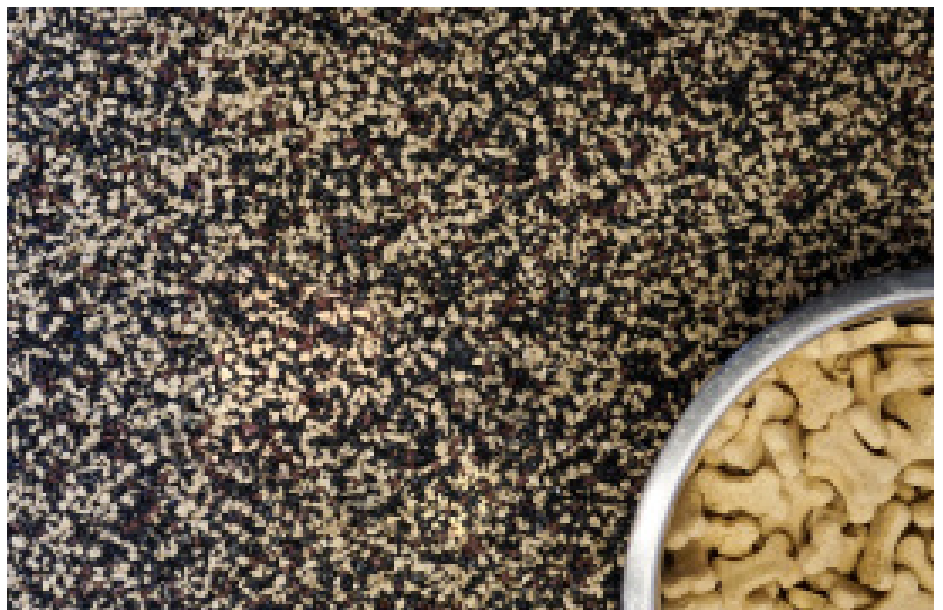


Softroc is ideal for paddock areas, barn corridors, wash bays, grooming stalls, breeding barns, winner's circles, feed rooms and sheds.



The Softroc surface is impervious to bacteria and mildew growth.

All Softroc materials have ISO 9002 certification and have been tested by the NSF.



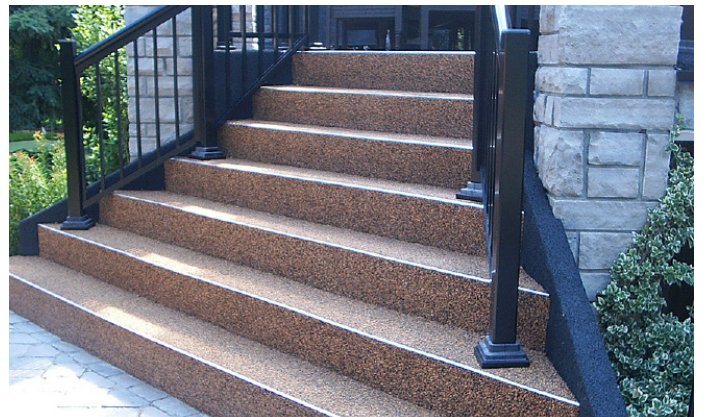






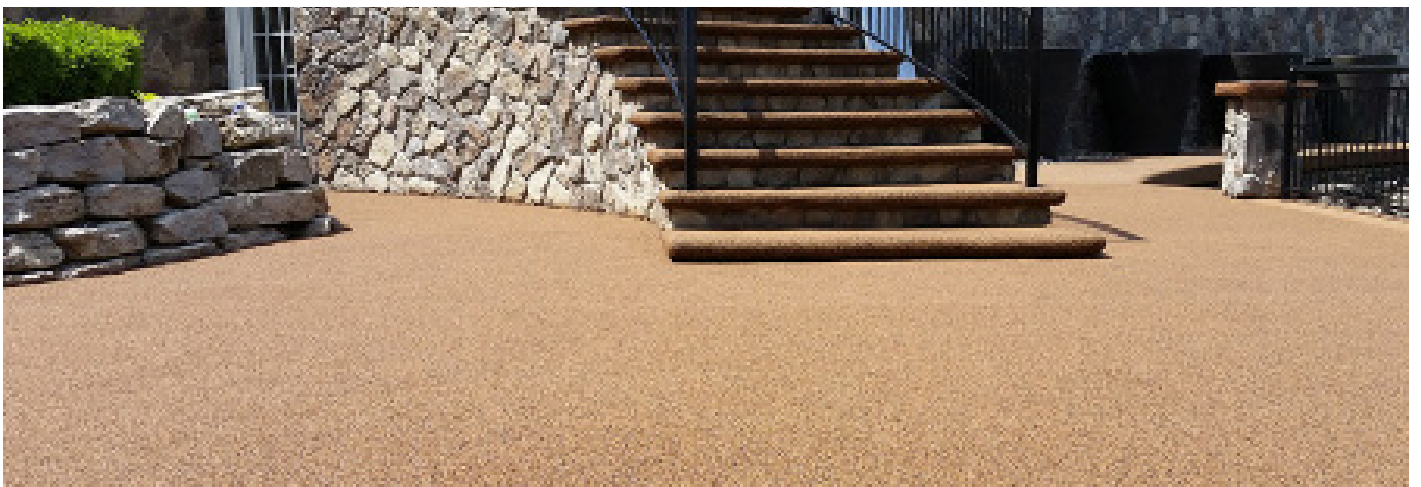


## PATHWAYS & STEPS

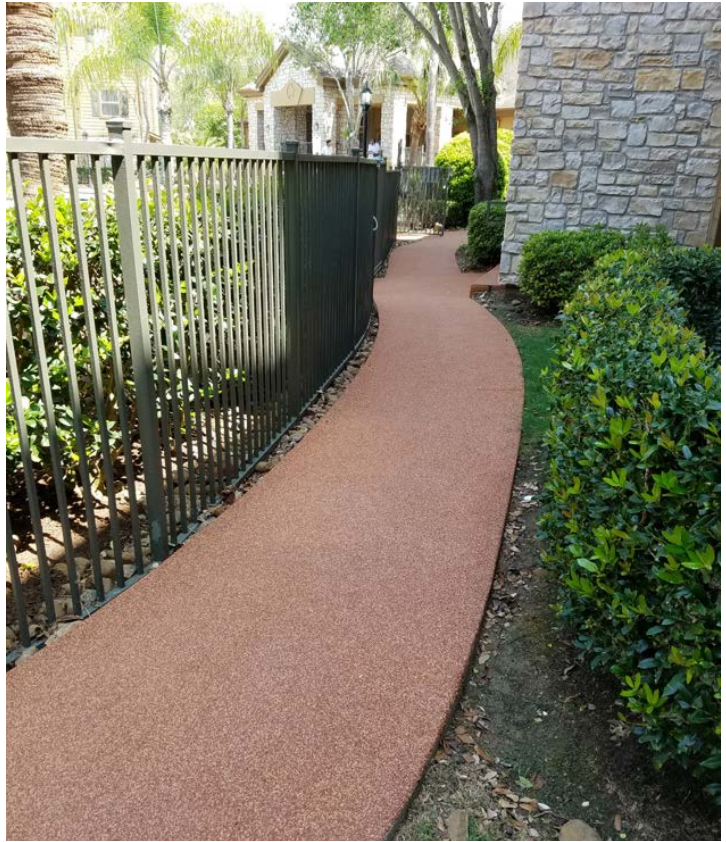


Softroc bonds directly to any solid substrate material including concrete, asphalt, epoxy, stone, brick, wood, and more. Surface blemishes are easily filled and eliminated. There is simply no other surface like it!

Softroc surfacing has been designed and thoroughly tested to remain stable in all weather conditions.









---

# ONLY THE BEST QUALITY

---



Softroc's EPDM granules are randomly cut and shaped chunks of rubber, ranging in size between 0.5 mm and 4.00 mm (depending on the product specified), allowing for many points of contact from one rubber granule to another where the polyurethane resin binder will cure and firmly adhere. The interlocking granular nature of the product allows it to flex, expand and contract while the system stays solid and strong.

We specify and manufacture all of our products, including in house research and development and on site testing, in a wide variety of environments. No "middle man". We have the highest-grade rubber available and offer many different types of resins for a multitude of applications.

Softroc is suitable for both indoor and outdoor play areas. It is long lasting, low maintenance, and highly attractive.

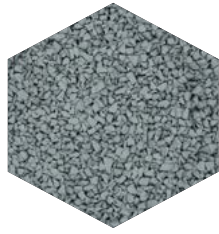




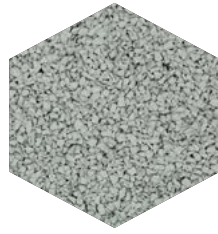
## SOFTROC COLORS



BLACK



DARK GREY



LIGHT GREY



WHITE



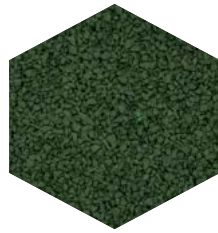
RED



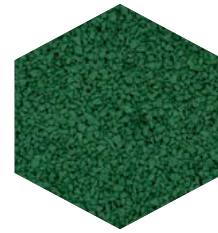
BROWN



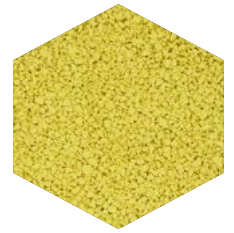
BEIGE



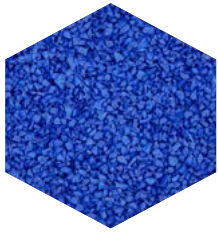
DARK GREEN



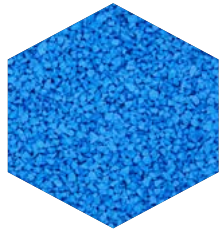
LIGHT GREEN



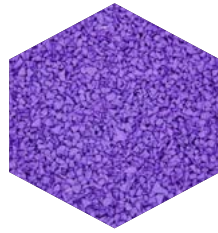
YELLOW



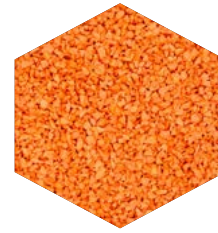
DARK BLUE



LIGHT BLUE



PURPLE



ORANGE

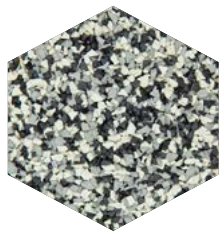


BRIGHT RED

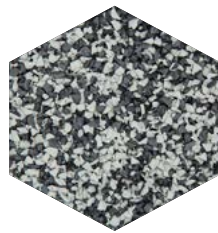
## SOFTROC COLOR MIXES



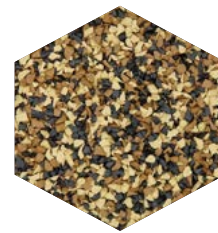
PLATINUM



NICKEL



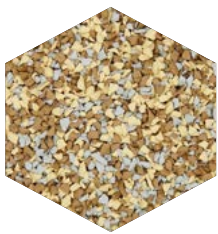
SLATE



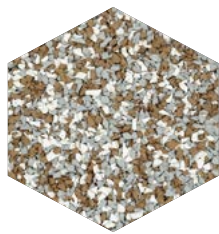
MOCHA



LIMESTONE



SANDSTONE



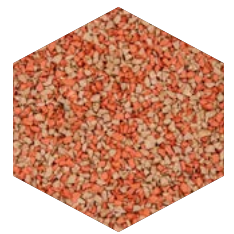
BROWNSTONE



SANDALWOOD



SANTA FE



TERRACOTTA



# SOFTROC PRODUCT SPECIFICATIONS

## PART I – GENERAL

### 1.1 WORK INCLUDED:

Work in this section includes furnishing all labour, materials, equipment, and services required to install Softroc poured-in-place granular rubber safety surfacing. It will be completed to any supplied plans, drawing details and specifications that are compatible with the following.

### 1.2 RELATED WORK SPECIFIED ELSEWHERE:

Poured-in place concrete, compacted crushed stone, asphalt, curbing, interlocking brick, geotextile fabric or filter cloth, plywood (marine-grade or premium pressure-treated) or other approved substrate & retaining material.

### 1.3 SUBMITTAL:

Submit full range of sample colors & finishes available and printed sales literature.

### 1.4 DELIVERY AND STORAGE:

Deliver materials in manufacturer's clearly labelled, unopened containers. Store and handle in a manner which will prevent intrusion of foreign matter and will assure protection from weather. All resins and solvents should be stored at a temperature of not less than 0 degrees Celsius (32 degrees Fahrenheit).

### 1.5 SCHEDULING:

Coordinate the delivery of the materials with the scheduled time of installation to insure minimum storage time at the project site.

### 1.6 WARRANTY:

All materials under this section shall be installed by a dealer or installer authorized by the manufacturer and shall be guaranteed by the manufacturer against defects only as described in the manufacturer's warranty to the authorized dealer or installer. The labour and installation warranty period for Playgrounds, Splash Pads, Water parks, Animal-use Facilities, Golf Courses, Garages & Driveways (residential or commercial use) or any other Commercial or non-residential application shall be ONE to FIVE (1 – 5) YEARS and the warranty for Residential foot-traffic-only applications shall be ONE to TEN (1 - 10) YEARS as specified and provided by the authorized dealer or installer.

### 1.7 CONTRACTOR:

The authorized dealer or installer must have installed at least 25 applications of a similar size project and have a minimum of 5 years' experience in the poured-in-place rubber safety surfacing industry.

### 1.8 JOB CONDITIONS:

The ground & air temperature is recommended to be above 5 degrees Celsius (41 degrees Fahrenheit) day and night during the installation and curing of the product. Any temperatures below this may affect the speed and quality of the installation. Relative air humidity (RH%) shall be between 40-80%. Weather conditions should be dry during the installation and curing of the product.



## PART II – PRODUCTS



### 2.1 MANUFACTURER:

Recycled or virgin EPDM, TPV or SBR rubber granules and accessory materials such as binders, silica's and solvents shall be as produced and/or supplied by Softroc or equal as approved by the client.

### 2.2 MATERIALS:

A. Granules - Pure vulcanized EPDM rubber chips ranging in size from 0.5-1.5 mm minimum dimension (Softroc Premium) to 1-4 mm maximum dimension (Softroc Classic). EPDM rubber shall be UV stable. A mixture of Softroc Premium and Softroc Classic granules is acceptable at a maximum Softroc Premium ratio of 1:2.

B. Binder - Resin (Chemical Family: Aromatic (Softroc Standard Resins) or Aliphatic (Softroc UV/UV Commercial Resins) Isocyanate). Polyurethane resin binder shall be 100% solid polyurethane and contain no TDI or solvent. Softroc UV Resin Accelerators may be used with some aliphatic binders. (Aliphatic binders should be considered on applications (indoors and outdoors) where there is any UV exposure or where light colored rubber granules are used).

C. Primer – Aromatic or Aliphatic Resin thinned with a low VOC solvent.

D. Matrix - Resin mixed with a silica thickening agent, used as a base coat to allow application of rubber on vertical surfaces such as stair risers and concrete pool copings.

E. Finished Floor Properties:

- i. Surface to withstand 600-psi tensile stress.
- ii. Surface to be slip resistant when wet or dry.
- iii. Surface to be fungus resistant (trace to no growth).
- iv. Surface to have chemical resistance (treated surface immersed for 24 hours) so that there is no effect from oil, lye, hydrochloric acid, animal fat, grease, acetone, Tolidine, alcohol, blood, chlorine, urine, detergents and insect spray.

FINISHES: Pool Decks, Splash pads, Patios, Walkways, Driveways, Cart Paths etc.:

- i. Impact absorbing, cushioned surface
- ii. Condition of the substrate must be approved by authorized Softroc representative
- iii. Logos or designs can be incorporated into the finished surface
- iv. Softroc topcoat surface to be minimum 6mm and maximum of 12mm thick
- v. Pool decks should be left for 1-2 days before general use, and splash pads should be left for 5 days before general use

FINISHES: Splash pad, Water play (two-tier system):

- i. Two-tier system over compacted "A" Gravel
- ii. Base of Softroc full profile water play system to consist of recycled EPDM or SBR (plus optional pea-stone) mix. Rubber granules to be no less than 80% of mixture
- iii. Base to be no installed to specified depth
- iv. Base coat binder to be used in the base layer
- v. Base coat to dry for no less than 24 hours
- vi. Apply standard Softroc 6 – 12 mm EPDM top coat to color specified
- vii. Softroc water play systems should be left for 5 days before general use



## 2.3 TESTING:

The system should be tested to the following standard.

- A. Hardness: ASTM D-2444 94% recovery
- B. Water Absorption: ASTM D-530 +6.5%
- C. Ultraviolet Resistance: ASTM D-3137
- D. Fungal Resistance: Trace to no growth: ASTM G-21
- E. Spread of Flame Resistance: ANSI/UL 790 (ULC-S107) Class A
- F. Accelerated: weathering no change after 2000 hours
- G. Freeze /Thaw: no change after 30 days at minus 50 in 24-hour period

## PART III – EXECUTION

### 3.1 PREPARATION:

- A. All sub surfaces will be inspected prior to application and any discrepancies will be reported to the owner or his agent. Installation will not proceed until any problems are rectified. Unless specified the owner is responsible for the sub base (substrate).
- B. Clean the substrate with broom or Shopvac as required. Use of a pressure washer may be required if substrate is extremely dirty (Sufficient time must be allowed for the surface to thoroughly dry).
- C. Any areas of new concrete must be allowed to cure a full 28 days prior to having Softroc installed over it. The use of concrete curing accelerators or accelerated curing formulas is not recommended.
- D. Install retaining edging or forms if required.

### 3.2 MIXING / APPLICATION:

- A. Using a short nap roller, roll onto substrate surfaces one coat of primer at approximately 50 square feet per litre. Primer is not necessary if covering compacted stone (two-tier system only).
- B. The selected EPDM topcoat granules should be coated with aromatic or aliphatic resin in a non-porous container at a resin to granule ratio of 80% rubber to 20% urethane resin by weight. Topcoat should not be less than 6 mm and not more than 12 mm in depth. It is recommended that the mixing of the topcoat be carried out with an electric vertical shaft mortar mixer to ensure consistency and assuring complete resin coverage of each granule.
- C. The resin should be applied to the rubber once the rubber is initially working within the mixer. The above must be mixed for approximately 1-3 minutes.
- D. Upon full curing of the new Softroc surface you may choose to roller coat the area with more resin thinned with solvent. This provides the added benefit of adding another coat of resin to strengthen the bond. This provides maximum strength and durability suitable to extreme commercial settings and high traffic areas. This step can be repeated yearly or as needed. It is not generally necessary for residential or light traffic areas.



### 3.3 HEALTH & SAFETY:

- A. When using either resin or solvent products, whether during mixing or application, the wearing of protective gloves is essential. This will protect contact of the skin directly with the above materials. The gloves will be required to be changed regularly throughout the installation and sufficient quantities of same should be allowed for.
- B. Should any resin or solvent come into contact with the skin, this must be immediately washed off using suitable detergents and water.
- C. When towelling the product, it is recommended that rubber knee-pads with Velcro straps or knee boards be used.
- D. Read all Material Safety Data Sheets (MSDS) prior to installation. All relevant MSDS should be on site during installation.

### 3.4 SITE PROTECTION:

- A. Erect barricades or caution tape as required preventing inadvertent pedestrian traffic on the finished floor surface for a period of 24-48 hours
- B. On large projects where access to the public is possible, barricades and signs must be implemented around the working area, again to avoid any inadvertent traffic. Security guards may be required in some cases. This is more relevant on projects taking more than one day to complete.

### 3.5 CLEAN UP:

Upon completion of work in the section, remove all tools, equipment, unused materials, and debris from the site; broom clean immediate working areas.

### PLEASE NOTE:

After the completion of the surface, the EPDM granules may appear to take on a yellowish color which we refer to as “ambering”. This is a result of using an MDI urethane (if selected by the customer) which gives long-term flexibility to the surface, but also a short-term ambered color. This will “burn off” with normal activity and sunlight in a short period of time. An Aliphatic (Softroc UV Resins) resin is also available at an increased cost; however, it will not cause an “Ambering” effect on the surface. Softroc’s UV Commercial Resin is a UV stable resin that will not amber in sunlight and has the additional benefit of chemical stabilizers to combat the effects of chlorine over long periods of use.





## CONTACT US

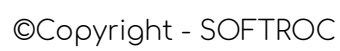
Our team at Softroc is excited to hear from you. To reach our team, call us or visit us online at Softroc.

**TF: 1-888-763-7276**

## Notes

This image shows a blank sheet of white paper with horizontal ruling lines. The lines are evenly spaced and run across the width of the page. There are no margins, text, or other markings on the paper.









[www.softroc.com](http://www.softroc.com)



[info@softroc.com](mailto:info@softroc.com)



1(888) 763-7276





**CONTRACTORS GUIDE TO:**

# **RUBAPAVE SAFETY SURFACING**

**BY RUBAROC**





**CONTRACTORS GUIDE TO:**  
**RUBAPAVE**  
**SAFETY**  
**SURFACING**

**BY RUBAROC**



# ACKNOWLEDGEMENTS

The content of this guide was developed using over 38 years of installation experience acquired by the Rubaroc team in the rubber safety surfacing industry.

Rubaroc has attempted to ensure that all information contained in this guide is correct; however, there is a possibility that this guide may contain errors. Please review all critical designs with your local Rubaroc representative prior to installation. Final determination of the suitability of any information or material is the sole responsibility of the user. Products mentioned herein are subject to regional availability. Check for product availability at your local Rubaroc location or online at [rubaroc.com](http://rubaroc.com).

© Rubaroc 2021

Rubaroc International is the owner or authorized user of all trademarks listed herein.

Rubaroc Canadian Headquarters  
3-2416 Wycroft Road  
Wycroft Road  
Oakville, ON L6L 6M6  
[www.rubaroc.com](http://www.rubaroc.com)





# TABLE OF CONTENTS

Acknowledgements	3
Table of contents	4
Overview of safety surfacing concepts	5
Concept	5
Advantages	5
Concept	7
Advantages	8
Components	8

# INTRODUCTION

---

As North America's oldest rubber surfacing company Rubaroc has a long tradition of professional and long lasting installations. We recognize the growing need for rubber safety surfacing installers across the United States and Canada. We are proud to support our contractors through training, distribution and on-going support.

This manual is a basic guide for the installation of any type of project(s) involving Rubaroc safety surfacing. Hands-on training is also available at Rubaroc training workshops and free introductory courses. For a listing of seminars near you, visit [www.rubaroc.com](http://www.rubaroc.com).

## OVERVIEW OF SAFETY SURFACING CONCEPTS

### CONCEPT

Rubber safety surfacing has been installed since the 1970s throughout Europe. It was originally used specifically for horse stable and athletic facilities.

In 1983 rubber safety surfacing was brought to North America by our founder Barry Meakings. The potential residential market applications were quickly realized, and in 1986 the first commercial rubberized pool deck was installed in Garland, Texas.

### ADVANTAGES

Rubaroc prides itself on safety, style and durability, and manufacture our products with these values in mind. We provide contractors with high quality rubber granules and specialized resins to complete a variety of installations.

Rubaroc safety surfacing offers a great variety of advantages compared to standard interior and exterior surfacing:

*Non-slip* - The unique rubberized properties of Rubaroc safety surfacing creates a non-slip surface, even when wet.



***Durability*** - Rubaroc surfaces are made using the highest quality of rubber and resin, resulting in a durable surface that lasts for decades. The high compressive properties and high flexibility makes safety surfacing highly resistant to salt scaling, a common problem with some types of concrete, and ground movements due to the freeze and thaw cycles.

***Maintenance*** - With proper installation, Rubaroc safety surfacing requires low maintenance.

***Accessories*** - Accessory products for safety surfacing, such as logos and glow-in-the-dark accents, are available to transform outdoor spaces into more unique and functional areas.

***Modularity*** - Rubaroc safety surfacing can be installed in a variety of patterns, including curves, straight lines and intricate designs, and add unique touches to every space. Rubaroc design applications are only limited by your imagination.

***Simple to use*** - Rubaroc safety surfacing is a simple system consisting of primer, rubber granules and resin. Many installations are completed within one day.

***Freeze-thaw resistance*** - Frost damage is virtually nonexistent. Rubaroc flexes during the freeze and thaw cycle preventing cracks from occurring.

***Porous*** - Rubaroc allows unto 70% of surface water to flow through to the substrate, limiting the amount of dangerous water and ice to accumulate.



# RUBAPAVE

---

## CONCEPT

RUBAPAVE® was developed in the late 90s and was first used on the walkways and cart paths at the Valderrama Golf Club in Spain. The durability and safety features of the rubberized surface are unmatched by any other overlays offered in today's market.

RUBAPAVE® combines SBR rubber sourced from recycled tires and a specially formulated polyurethane binder, to create a stunning solution for driveways, garages, parking lots and pathways. RUBAPAVE can be installed over concrete, asphalt, interlocking brick, stone/aggregate and more. As it is made from recycled tires, you can feel good about keeping tires out of landfill and help the circular economy.

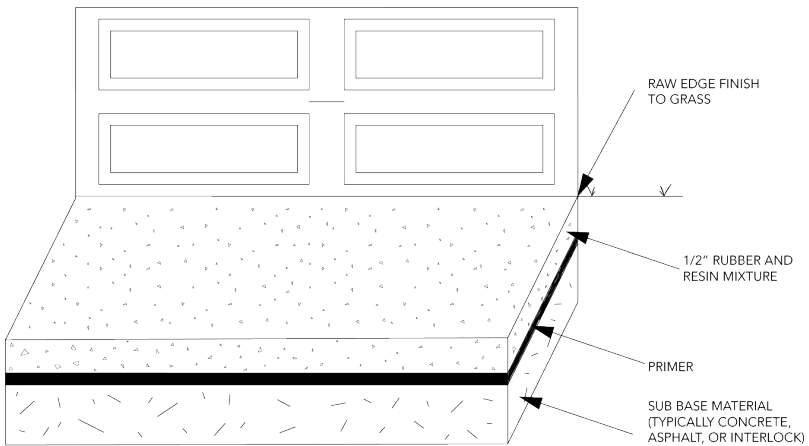


## ADVANTAGES

RUBAPAVE® remains durable and flexible in all weather conditions, making it the perfect long-lasting surface for North Americans. It can withstand temperatures ranging from -148°F (-100°C) to 135°F (57°C), and be salted and snow plowed.

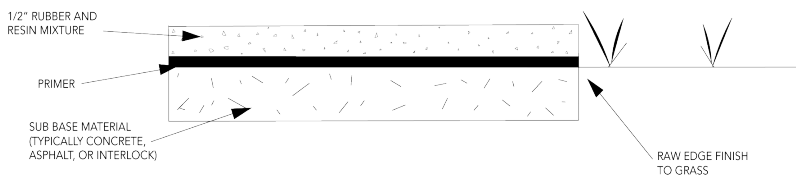
Low maintenance, slip resistant, and resistant to UV Rays, gasoline, diesel, motor oil, transmission fluid, hydraulic fluid, and other hostile materials that destroy the looks, and function of traditional surfacing materials.

## COMPONENTS



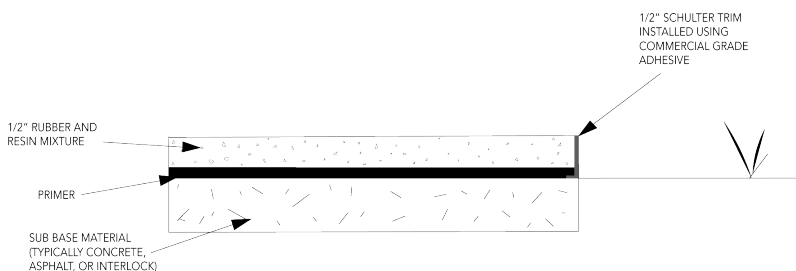
*Figure 1. Typical components of a RUBAPAVE® system for driveway.*

The unique aspects of RUBAPAVE® safety surfacing is that the system can be applied on a variety of old, cracked surfaces to create a strong, long-lasting surface. There are two ways to install RUBAPAVE® safety surfacing: on an existing surface or using a compacted aggregate base. (Figure 1) Installation over an existing surface is the most effective way to install RUBAPAVE®. When the existing surface has had time to settle and shift during the freeze-and-thaw cycles, RUBAPAVE® installations will maintain their integrity and look. Safety surfacing is only as strong as the surface it is installed on, therefore it is best to ensure the integrity of your substrate prior to installation.



*Figure 2. Installation with raw edge.*

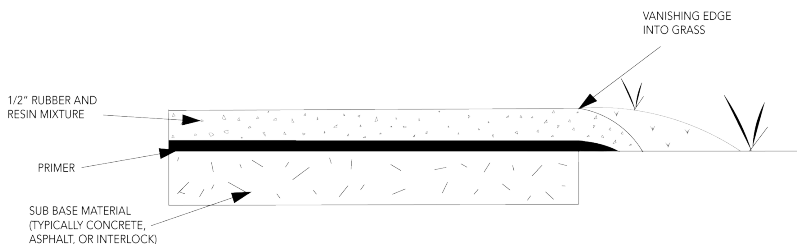
This is the most common type of edge finishing for RUBAPAVE® installations because it requires the least amount of preparation. Simply use two trowels to create a raw edge following the existing substrate. You may go back with a sharp knife to clean up this edge after the surface has cured.



*Figure 3. Installation with schluter trim edging.*

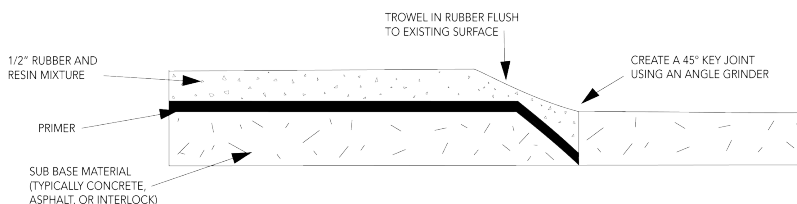
Schluter trim is used to create a closed edge along RUBAPAVE® surfaces. The trim is applied prior to application around the edges and can be purchased in a variety of finishes. Schluter trim also acts as a guide to maintain 1/2" thickness.





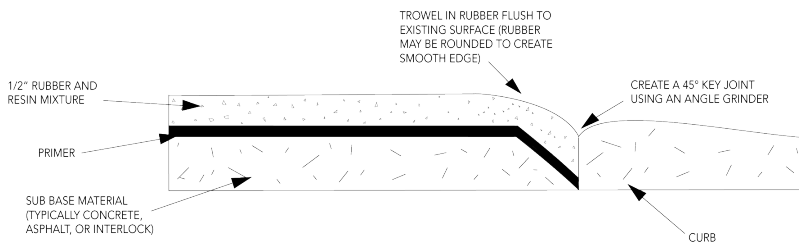
*Figure 4. Installation with vanishing edge.*

A vanishing edge required more preparation as the grass and dirt must be pulled back prior to installation. After the surface has cured fully, the dirt and grass is then placed back.



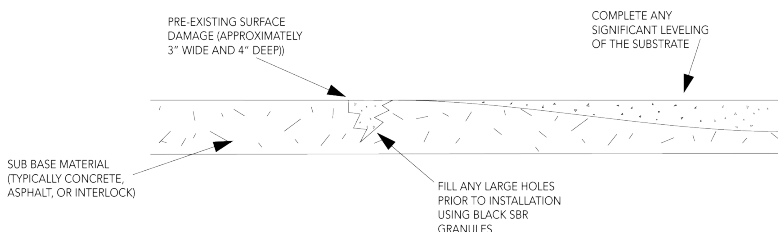
*Figure 5. Installing flush with adjacent surfaces.*

Prior to installation grinding around objects (i.e. drains) and edges may need to be completed to ensure that RUBAPAVE® can be installed flush and prevents any tripping hazards. If the surface has settled lower than surrounding objects and edges then no grinding is required prior. You may install thinner than 1/2" as you reach these objects and edges to ensure a smooth transition is achieved. RUBAPAVE can be installed as thin as 1/8" without impacting durability.



**Figure 6. Finishing to curb.**

When finishing to a curb that borders a road, it is important to create a 45° key joint with an angle grinder to trowel the finishing edge of the rubber. The edge nearest to roadways are most vulnerable to damage from city vehicles (i.e. snow plows and street cleaners), therefore it is important to ensure a strong edge has been created.



**Figure 7. Completing repairs using fill prior to installation.**

When preparing your substrate for installation black SBR is recommended to fill in any holes and complete any surface levelling required by the client.

All significant sized holes (i.e. 4"+ deeper) should be filled in prior to RUBAPAVE® application to ensure proper materials estimating can be made.