



211 North Lindbergh Blvd.
St. Louis, MO 63141
800.231.1327 tel. | 314.754.0835 fax
specify@anovafurnishings.com
anovafurnishings.com

L2019— Metrix Trash Receptacle with Dual Side Openings and Side Door

40-gallon steel slat trash receptacle with contour top, plastic liner, rubber feet and optional recycle decal (when specified)

Material

The receptacle is 43.60" tall and is composed of 10-gauge slotted steel with a .63" gap vertical slotted pattern. The side door features a full-length, heavy-duty steel hinge and a tamper-resistant cam lock and key system. The receptacle has two 7.25" high and 13.29" wide waste openings located on opposite sides of each other. The contour top is made of 16-gauge galvanized steel.

Optional decals are available. Choose "Bottles/Cans" with recycling logo, "Mixed Recycling" with recycling logo or "Trash" decal—custom decals also available. Specify black or white lettering. Decals will be factory installed and must be specified at the time of order.

The receptacle is designed to be portable for flexibility in placement or surface mounted using pre-drilled 0.32" diameter holes inside the base to prevent movement. Mounting hardware is not included. The rubber feet are adjustable to assist in leveling the receptacle. The reusable plastic liner is made of high-density polyethylene.

Finish

Fade-resistant, powder coated steel features a state-of-the-art primer proven to prevent rusting. Treated components exceed the industry standard by 34% in testing by independent sources.

Color

See website or sales representative for color choices.

Assembly

The receptacle ships fully assembled and ready for use.

Maintenance

The product is virtually maintenance-free and requires only periodic cleaning with a sponge and a mild detergent and water solution to remove surface dirt. Do not clean with solvent or petroleum base products.

Warranty

20-year limited structural warranty with 7-year finish warranty against fading from the date of purchase. See full details on multi-year warranties for components at www.anovafurnishings.com/warranty.aspx.

Replacement Parts

Black Plastic Liner

R-DOM1012

Decals

Trash w/Logo-White DEC2000

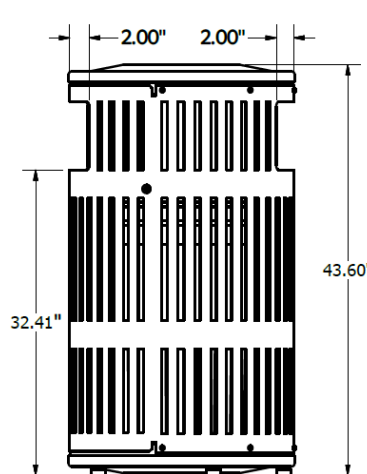
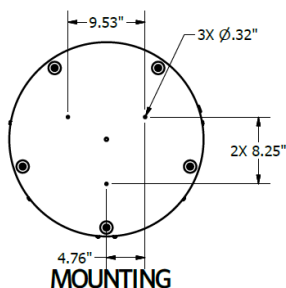
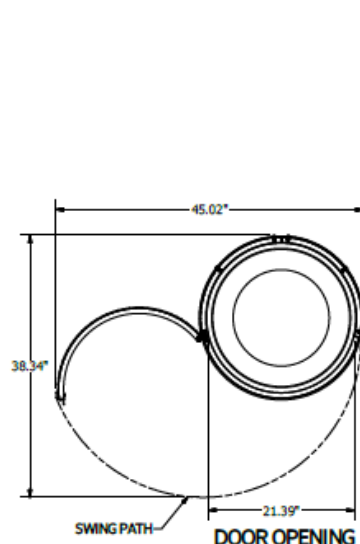
Trash w/Logo-Black DEC2002

Bottles/Cans w/Logo-White DEC2008

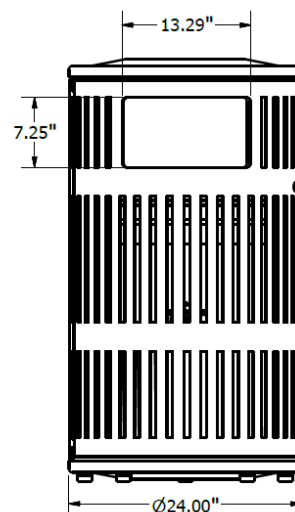
Bottles/Cans w/Logo-Black DEC2010

Mixed Recycling w/Logo-Whit DEC5000

Mixed Recycling w/Logo-Blk DEC5002



SIDE VIEW



FRONT VIEW

SHIPPING INFORMATION

Unit Weight	Unit Shipping Wt. UPS	Unit Shipping Wt. Truck (1+ Units)	Unit Ship Size w/Pallet	Max Units Per Pallet	Pallet Size/Wt. (32" x 48")	Total No. Pkgs.	Shipping Class
126 lbs.	N/A	137 lbs./unit	39 cu. ft.	4	50 lbs.	1	100

3/23/2017

Copyright 2017 ANOVA®

Made in USA.



211 North Lindbergh Blvd.
St. Louis, MO 63141
800.231.1327 tel. | 314.754.0835 fax
specify@anovafurnishings.com
anovafurnishings.com

L2020— Metrix Recycler with Dual Side Openings and Side Door

40-gallon steel slat recycler with contour top, plastic liner, rubber feet and optional recycle decal (when specified)

Material

The recycler is 43.60" tall and is composed of 10-gauge slotted steel with a .63" gap vertical slotted pattern. The side door features a full-length, heavy-duty steel hinge and a tamper-resistant cam lock and key system. The recycler has two 5" high and 5" wide recycle openings located on opposite sides of each other. The contour top is made of 16-gauge galvanized steel.

Optional decals are available. Choose "Bottles/Cans" with recycling logo, "Mixed Recycling" with recycling logo or "Trash" decal—custom decals also available. Specify black or white lettering. Decals will be factory installed and must be specified at the time of order.

The receptacle is designed to be portable for flexibility in placement or surface mounted using pre-drilled 0.32" diameter holes inside the base to prevent movement. Mounting hardware is not included. The rubber feet are adjustable to assist in leveling the receptacle. The reusable plastic liner is made of high-density polyethylene.

Finish

Fade-resistant, powder coated steel features a state-of-the-art primer proven to prevent rusting. Treated components exceed the industry standard by 34% in testing by independent sources.

Color

See website or sales representative for color choices.

Assembly

The receptacle ships fully assembled and ready for use.

Maintenance

The product is virtually maintenance-free and requires only periodic cleaning with a sponge and a mild detergent and water solution to remove surface dirt. Do not clean with solvent or petroleum base products.

Warranty

20-year limited structural warranty with 7-year finish warranty against fading from the date of purchase. See full details on multi-year warranties for components at www.anovafurnishings.com/warranty.aspx.

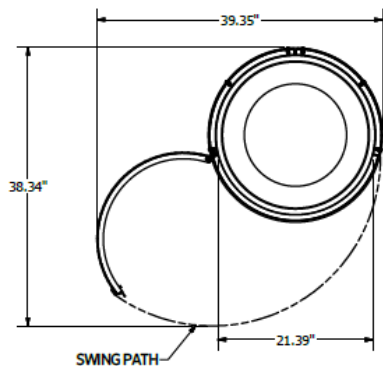


Replacement Parts

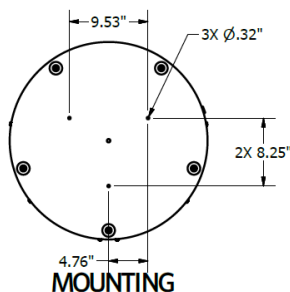
Black Plastic Liner R-DOM1012

Decals

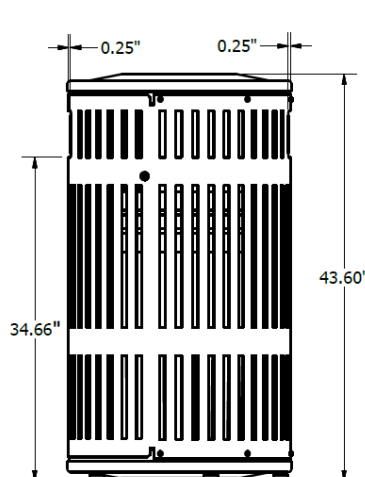
Trash w/Logo-White DEC2000
Trash w/Logo-Black DEC2002
Bottles/Cans w/Logo-White DEC2008
Bottles/Cans w/Logo-Black DEC2010
Mixed Recycling w/Logo-Wht DEC5000
Mixed Recycling w/Logo-Blk DEC5002



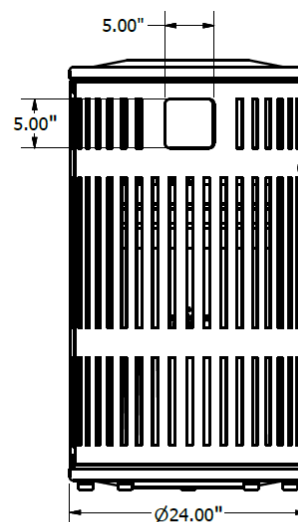
DOOR OPENING



MOUNTING



SIDE VIEW



FRONT VIEW

SHIPPING INFORMATION

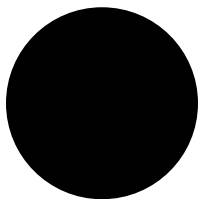
Unit Weight	Unit Shipping Wt. UPS	Unit Shipping Wt. Truck (1+ Units)	Unit Ship Size w/Pallet	Max Units Per Pallet	Pallet Size/Wt. (32" x 48")	Total No. Pkgs.	Shipping Class
126 lbs.	N/A	137 lbs./unit	39 cu. ft.	4	50 lbs.	1	100



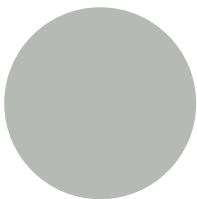
Colors and Patterns

Colors may vary due to screen resolution and personal settings.
For an exact match, please [contact us](#) to request a sample.

HIGH-GLOSS COATED METALS



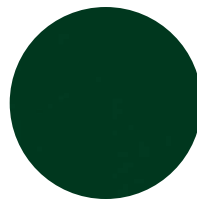
Black



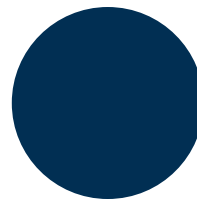
Gray



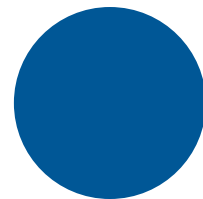
Sage



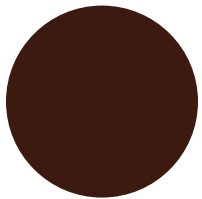
Pine



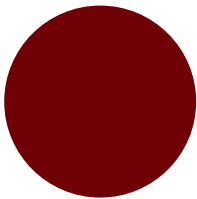
Navy



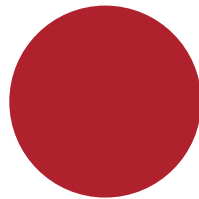
Blue



Brown



Burgundy



Red

TEXTURED COATED METALS

* Select colors may require an additional charge.



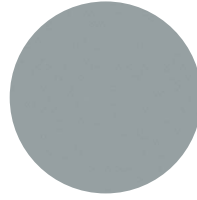
Textured
Black



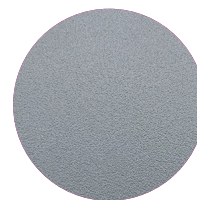
Textured
Charcoal



Textured
Bronze



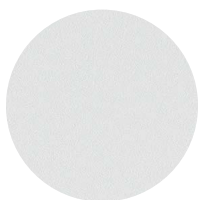
Textured
Pewter



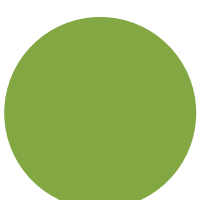
Textured
Silver



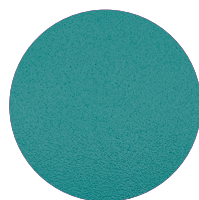
Textured
Sandstone



Textured
White



Textured
Fern



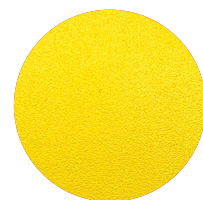
*Textured
Teal



*Textured
Purple



*Textured
Orange

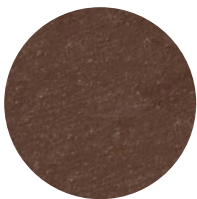


*Textured
Yellow

RECYCLED PLASTIC



Cedar



Mahogany

THERMORY * Untreated products age to silver/gray



Unaged

STONE



Black Lustre



Alpine Red



Coffee Bean



Riverrock

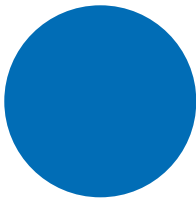
POLYETHYLENE / PLASTIC



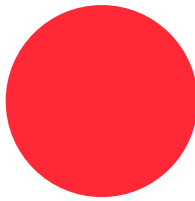
Black



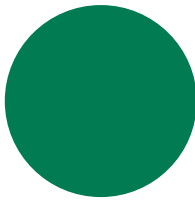
Gray



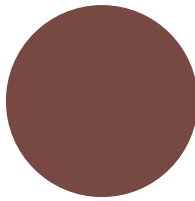
Blue



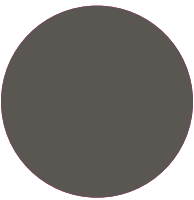
Red



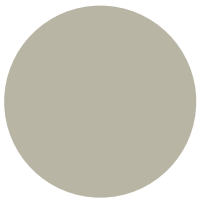
Green



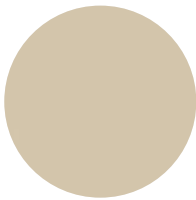
Brown



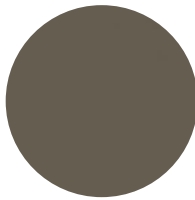
Bronze



Taupe



Tan



Chestnut



Black Granite

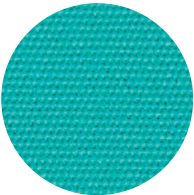


White Granite

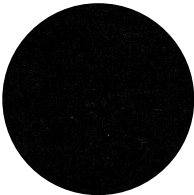
FIBERBUILT UMBRELLA FABRIC



Antique Beige



Aruba



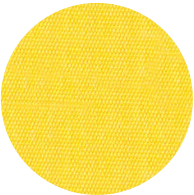
Black



Beige



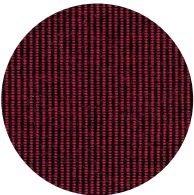
Burgundy



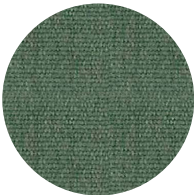
Buttercup



Charcoal



Dubonnet Tweed



Fern



Forest Green



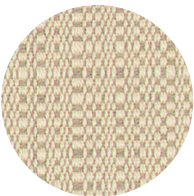
Ginkgo



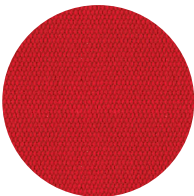
Jockey Red



Linen



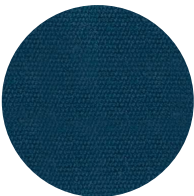
Linen Champagne



Logo Red



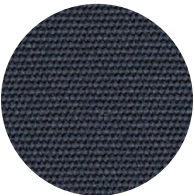
Mahogany



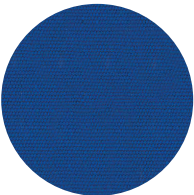
Marine Blue



Natural



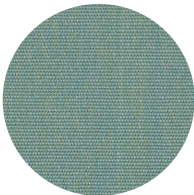
Navy



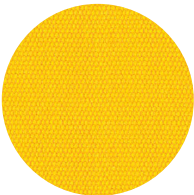
Pacific Blue



Smoke



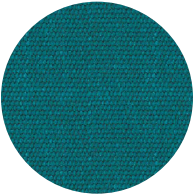
Spa



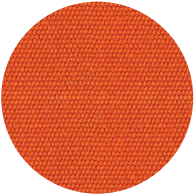
Sunflower Yellow



Terracotta



Turquoise



Tuscan

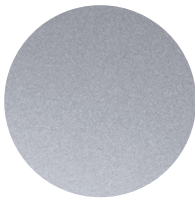
GREEN THEORY ALUMINUM PLANTERS



White Gloss



Matte Black



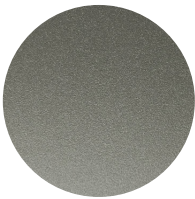
Metallic Silver



Pewter



Suede Bronze

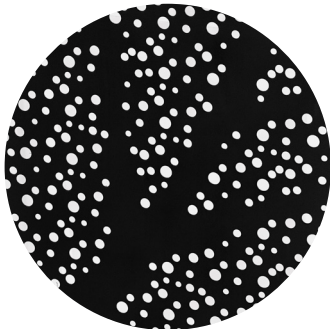


Smokey Beige

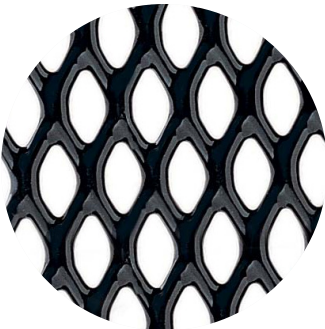
STEEL PATTERNS



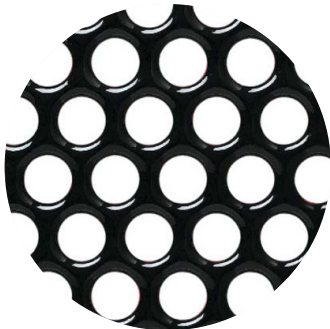
Stix



Leaf



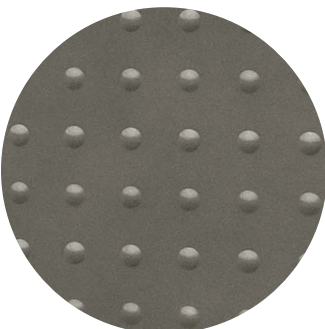
Expanded



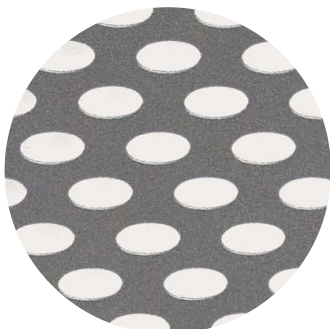
Perforated



Slotted



Embossed



Oval



Parquet