



August 4, 2017  
Via Email: cwu@coralgables.com

Charles K. Wu  
Interim Development Services Director  
City of Coral Gables  
405 Biltmore Way  
Coral Gables, FL 33134

RE: **University of Miami/Watsco Center (formerly known as "Bank United Center")  
Sesame Street Live**

Dear Mr. Wu:

This letter represents the University of Miami's official request to exceed the capacity for daytime events for the Watsco Center. The applicable regulations governing events at the Watsco Center provide that there can only be 1,600 persons at non-academic events scheduled during the academic year between the hours of 8:00 a.m. and 4:00 p.m.

On Friday, October 27, 2017, the University is scheduled to host "Sesame Street Live," a community event based on the children's television show. Some 2,000 elementary school children will be transported via 45 buses to the campus. The doors of the Watsco Center will open at 9:15 am and the event takes place between 10:30 a.m. and 12:15 p.m. Parking demand on our campus is generally light on Friday's and there will be no displacement of regular University parkers from the areas where the buses will be staged within campus.

The University has developed a bus and staffing plan that reflects appropriate security, control of traffic, and management in order to minimize any potential impact. We would sincerely appreciate the City Commission's consideration to allow the University to host this event.

Sincerely,

Ricardo Herrán  
Senior Planner  
Campus Planning and Development

**Event:** Sesame Street Live  
**Date:** Friday, October 27<sup>th</sup>, 2017  
**Description:** Approximately 2,000 elementary students bused in via approximately 45 school buses.

#### **TIMELINE**

- 9:30am: Buses begin to arrive and doors open
- 10:30am: Show Starts
- 12:15pm: Show Ends
- 12:15pm – 1:15pm: Egress of buses back to school

#### **BUS MOVEMENT (see map)**

##### **INBOUND FLOW**

**Arrival:** Buses will arrive in waves of 15 at these staggered times: 9:30am, 9:45am, 10:00am

**Drop-off flow:** Buses will be directed to enter at Merrick Drive; proceed down Walsh Avenue; unload in front of the Watsco Center building.

**Bus staging:** In this order

1. 10 buses will turn right on Dickinson Drive and stage in the H-100 Lot;
2. Next 25 buses will turn left into Lot 425 North; and
3. The last 10 buses will stage on Walsh Drive to prepare for pick-up.

##### **OUTBOUND FLOW (see map)**

**Departure:** Buses will begin to depart at approximately 12:15pm from Walsh Avenue in front of Watsco Center. After each bus completes its loading, it will turn left on Dickinson Drive; then, turn right or left on Ponce de Leon Boulevard to exit campus.

**Order of bus loading:** In this order

1. Buses staged on Walsh Avenue will be the first to load and depart;
2. H-100 Lot buses: Turn left on Dickinson Drive; turn left on Ponce de Leon Boulevard; turn left on Merrick Drive; turn left on Walsh Avenue; and
3. Lot 425 North buses: Turn left on Walsh Avenue at the exit closest to Merrick Drive.

#### **Student and Bus Accountability:**

School Board staff: Will keep head count of each bus; and, accountability of each bus

#### **STAFFING**

**Police and Parking Attendants:** See map

**Watsco Center Staff:** 8 – 10 (combination of full time staff and part- time staff) at drop-off/pick-up to facilitate unloading and loading of buses

#### **CONSIDERATIONS**

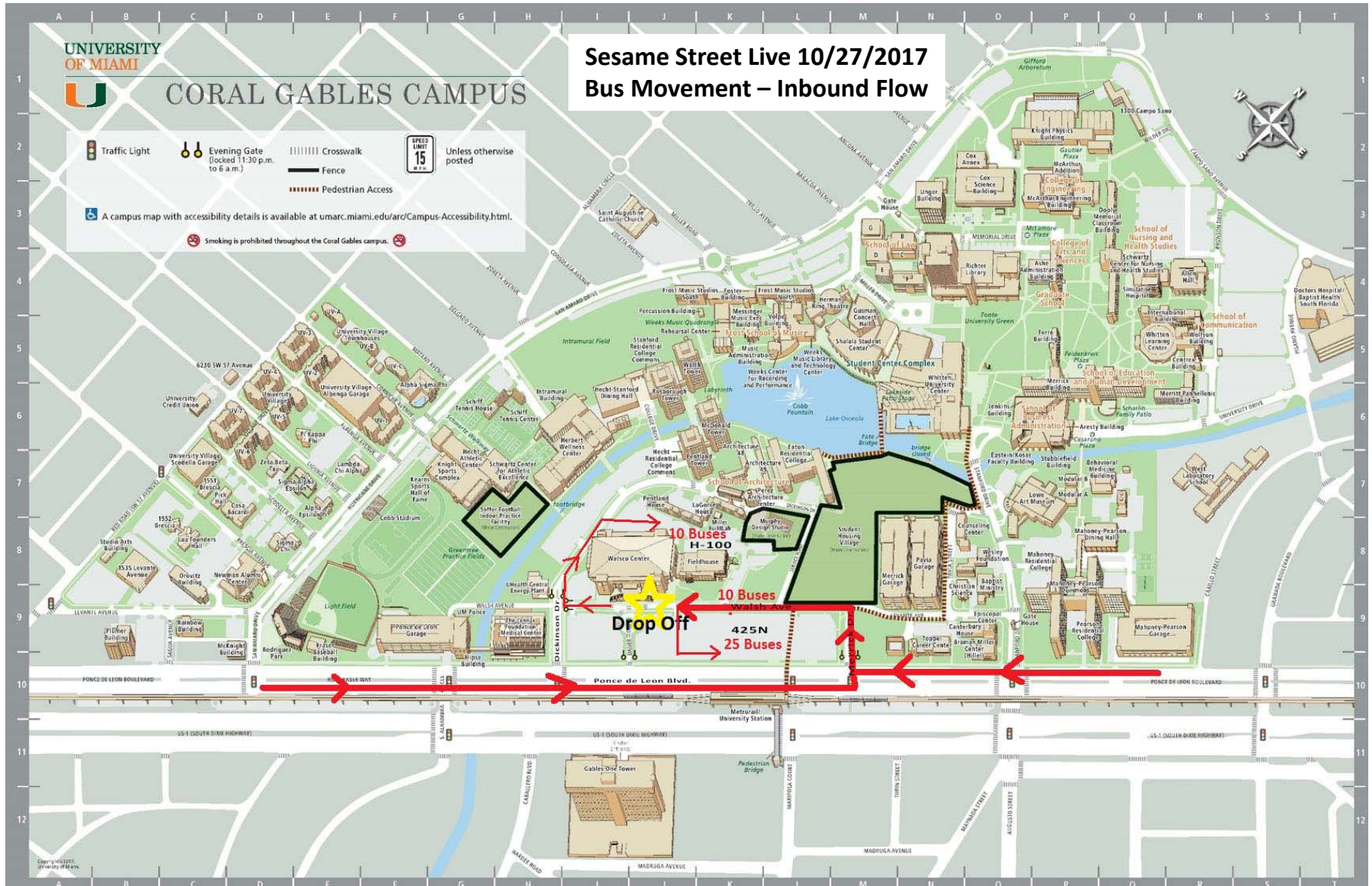
1. October 27<sup>th</sup> is Friday and parking is expected to be light. Therefore, there will be no displacement of regular UM parkers from the areas where buses will be staged.
2. The Watsco Center is permitted to have 1,600 attendees during the academic school year from 8am to 4pm. The variance will grant us additional 400 people and the vast majority will be arriving by bus.



# CORAL GABLES CAMPUS

- Traffic Light
- Evening Gate (locked 11:30 p.m. to 6 a.m.)
- Crosswalk
- Fence
- Pedestrian Access
- Unless otherwise posted
- A campus map with accessibility details is available at [umarc.miami.edu/arc/Campus-Accessibility.html](http://umarc.miami.edu/arc/Campus-Accessibility.html).
- Smoking is prohibited throughout the Coral Gables campus.

## Sesame Street Live 10/27/2017 Bus Movement – Inbound Flow



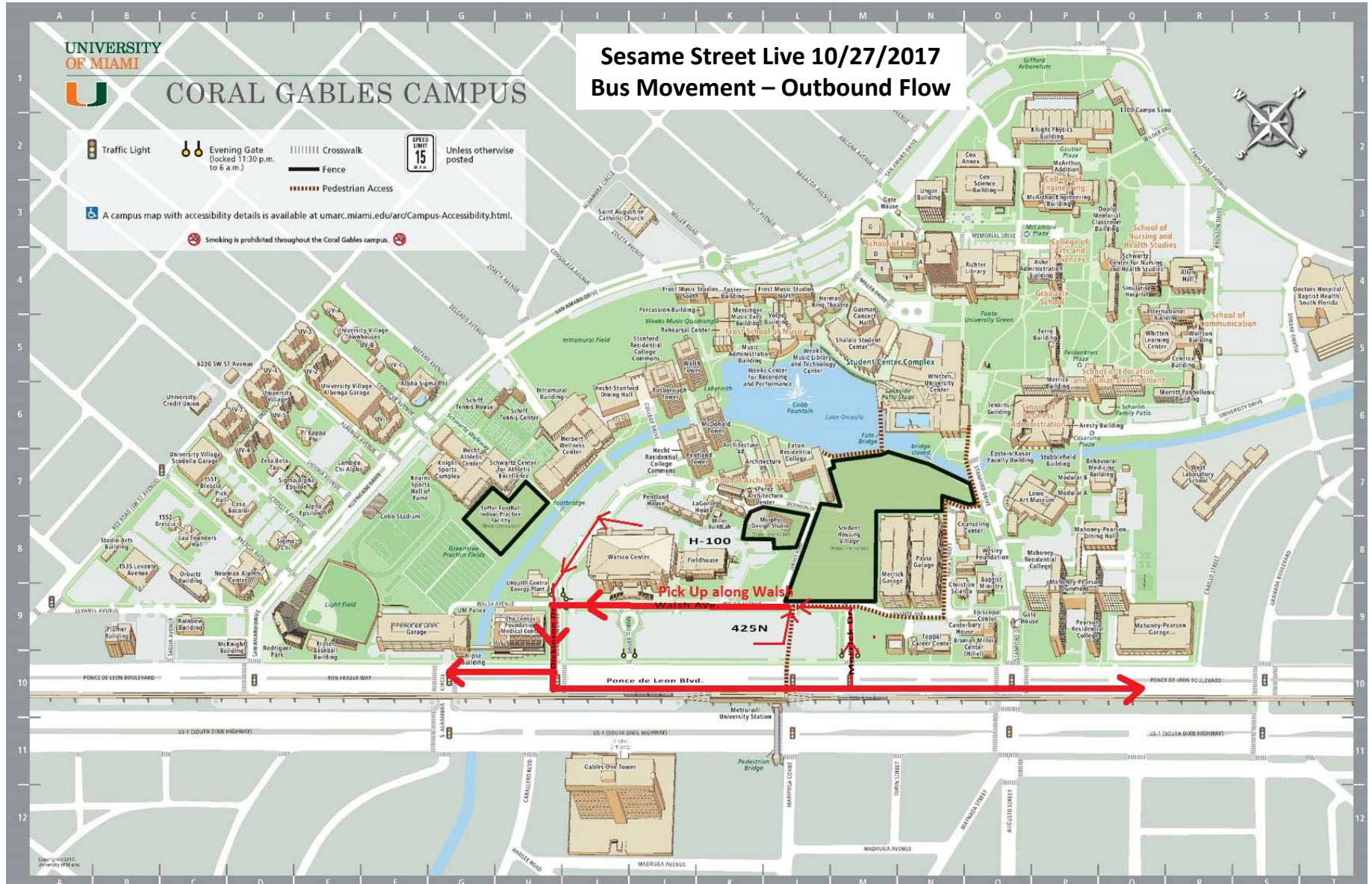




# CORAL GABLES CAMPUS

- Traffic Light
- Evening Gate (locked 11:30 p.m. to 6 a.m.)
- Crosswalk
- Fence
- Pedestrian Access
- Unless otherwise posted
- A campus map with accessibility details is available at [umarc.miami.edu/aro/Campus-Accessibility.html](http://umarc.miami.edu/aro/Campus-Accessibility.html).
- Smoking is prohibited throughout the Coral Gables campus.

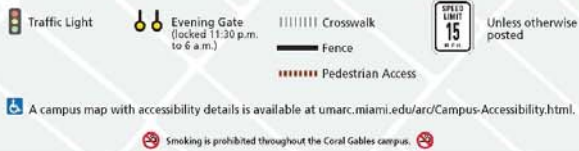
## Sesame Street Live 10/27/2017 Bus Movement – Outbound Flow







## CORAL GABLES CAMPUS



### Sesame Street Live 10/27/2017 Staffing

#### PSO ASSIGNMENTS

- 1 Supervisor
- 1 Rover
- 1 @ 425S
- 2 @ 425N
- 1 @ 431
- 1 @ 434N
- 2 @ Merrick & Walsh
- 2 @ Dickinson & Walsh

#### CORAL GABLES PD

- 1 Shift Commander

#### INBOUND/OUTBOUND

- 2 @ Merrick
- 3 @ Dickinson
- 2 @ Stanford

