

FRANCISCO DEL RIO ARTIST STATEMENT

"I have been forever fascinated by the exploration and study of the human influence and the passing of time. Both themes have been ever present in my work. By using layers over layers of paint or material, I've managed to express how "the humane" interacts and transforms everything, blending and merging with any other element present in my work.

After spending years painting by myself in my studio, I finally understood how critical it is for me to interact with others and bring that to my work. I became aware of the relevance of human interactions in the shaping of any reality. My formal training as an architect is ever present in my work too. So even though I have transited during the years from one theme to another, these are two very distinctive matters that have always been present."

WORKING METHOD

"Even though I always have a very strong first intuition about a new project, when it comes to commissioned pieces, I have a strict working method which I follow. First, I need to understand my patron's needs and identity, and become familiar with the site or architecture where the work will be placed. I then develop a concept that will give identity to that place and create a preliminary design, after which I conduct a profound investigation of materials and structural requirements to come up with a final design, which is later brought to life and installed. This allows my patrons to be aware of how the project develops and interact with the creative process by providing input and feedback. The whole process is backed up by a Gantt chart and partial reports on the progress of the works."

PROFESSIONAL BACKGROUND

After obtaining his Architect degree from Pontificia Universidad Catolica de Chile, Francisco has dedicated most of his professional life to the visual art, designing comprehensive art projects for different companies, hotels, and institutions. He has created large-scale, both interior and exterior, paintings and sculptures for different projects, both in Chile and the US, leading teams of artists, designers, and students to achieve all his creative goals.

In 2006, he founded his first art studio which he named Architectural Art, since that was the concept he aimed to develop. It was then when he created his first commissioned pieces for Hotels and Companies. What he tried to accomplish was to understand his clients' identity, define it through a concept, and then develop a series of art pieces, all with the same theme, and all related between each other, and at the same time, all of them created especially for a certain architectonic space.

This was the prelude to what today is Art with DNA (www.artwithdna.com), his Florida-based art studio where he does strategic art for architectural identity. He not only provides art consultancy services and develops projects for office occupiers, Architects, Interior Designers and/or Real Estate Developers, but he also designs, fabricates and installs his own artwork, which most of the time are large scale pieces in the most different locations.

He has had large experience working with engineers, architects, designers, light specialists, etc. and understands the contribution each delivers to the final output. He knows his way through architectural drawings, engineering calculations and structural requirements, understands different materials and is also familiar with various painting and coating alternatives, assembling techniques, packaging, handling and shipping of art pieces, and final installation of the pieces on site.

He enjoys a good challenge, so he tries to remain as versatile as possible, adapting materials, shapes, and sizes to whatever is needed to obtain pieces that are unique and contribute to create a specific identity for every project.

He is currently developing a 1,200 lbs. aluminum sculpture that he will install in San Francisco, CA.

In Miami, his latest commissioned work was the Quadro building located by the Design District. That project took a little bit over 2 years and there are more than 500 pieces in it, all working together to bring the ocean into the building. There is a +6,600 sq. ft. stainless steel sculpture installed in the façade of the building, covering the parking lot; a 16 ft tall interior sculpture in the main lobby made of powder coated aluminum; a huge installation in the port cochere ceiling with over 500 pieces made of anodized aluminum; and 18 painted aluminum pictures, among others.

In 2021 he created and installed a 2,000 sq. ft. spray painted sculpture, made in expanded steel mesh, that covers the main wall in the entrance hall of the Eon II building in Fort Lauderdale.

For Eastern Minerals, he created a 5 ft. disc with the salt that they had specially delivered to him from the mines that the company owns in the north of Chile.

For Freeport Mc Moran Copper and Gold, he developed four pieces to illustrate the importance of men in the process of mining. Those pieces were fabricated in 4 different materials: wood, stoneware, steel, and reinforced concrete.

For Deloitte's HQ in Chile, he created over 30 pieces, all of them related to their corporate identity and values. Large scale paintings, and a 25 ft. stainless steel textile sculpture that hangs from the ceiling and weighs over 1,600 lbs. are some of the pieces.

For the newest AC Marriott Hotel in Chile, he created more than 50 art pieces. Among them, there were a huge diversity of works, from paper setoffs to large steel sculptures -some of them lined

in leather, other in fabric and some painted-, together with a bronze sculpture and various paintings.

He passionately believes in doing art that is *sostenible*. This means it is critical for him to get very much involved with the relevant stake holders, understand their expectations and needs, and from there, develop an artistic proposal which portrays them. He tries to develop pieces that can be achieved by hiring local suppliers. And, whenever possible, he gets involved with the local community to get their “license to operate”.



del Rio

Francisco del Rio

Artist. Architect.



Francisco del Rio is a Chilean architect and artist who has dedicated most of his professional life to creating site-specific art projects that humanize spaces by relating the design, location and function to their inhabitants or visitors.

Born in 1971 to a family of engineers, from a very young age he found himself being constantly challenged to fit the mold set by his father and which came very natural to his three older brothers. He turned to his mother, a self-taught sculptress, where he found the inspiration to defy the expectations and follow his true calling.

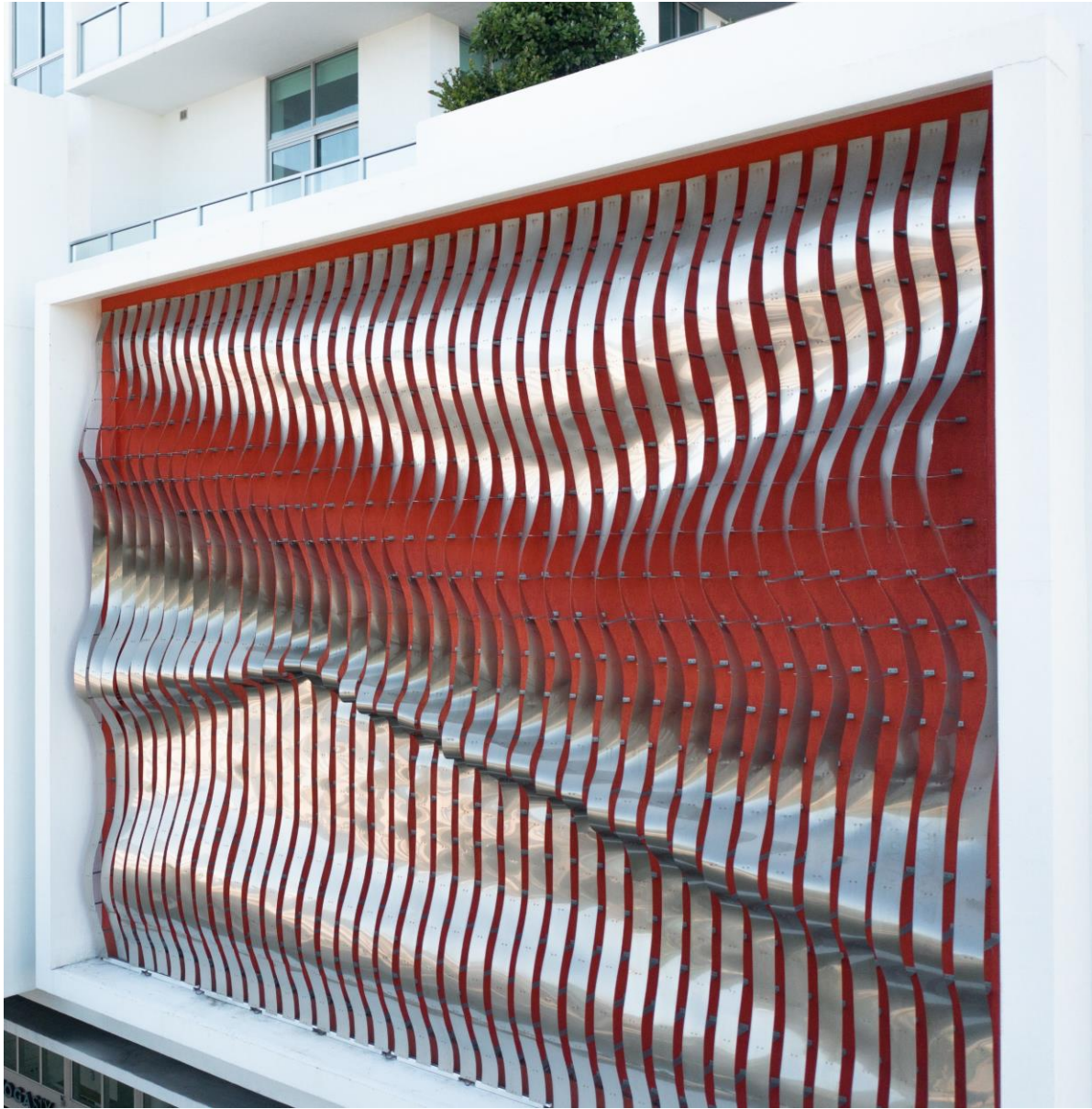
From the very early years, Francisco has been fascinated by the exploration and study of the human influence and the passing of time. Both have been ever present in his work. By using layers over layers, he's managed to express how "the humane" interacts and transforms everything, blending and merging with any other element present in his work.

His degree in architecture informs the multifaceted installations he has been designing for hotels, offices, residences, and mixed-use complexes since establishing his art studio, Art with DNA, almost 15 years ago in Santiago, Chile. His comprehensive approach relates art and architecture, crystallizing around the development of thematic interventions that enhance the identity of his patrons.

Francisco is married and has 4 children. He has been based in Florida, USA, since 2020 and is happy to call Weston his home.



Title: Marine Breath, 2019
Technique: Stainless Steel
Size: +6,600 sq. Ft.





Title: Marine Movement, 2019
Technique: Anodized Aluminum
Size: +500 pieces





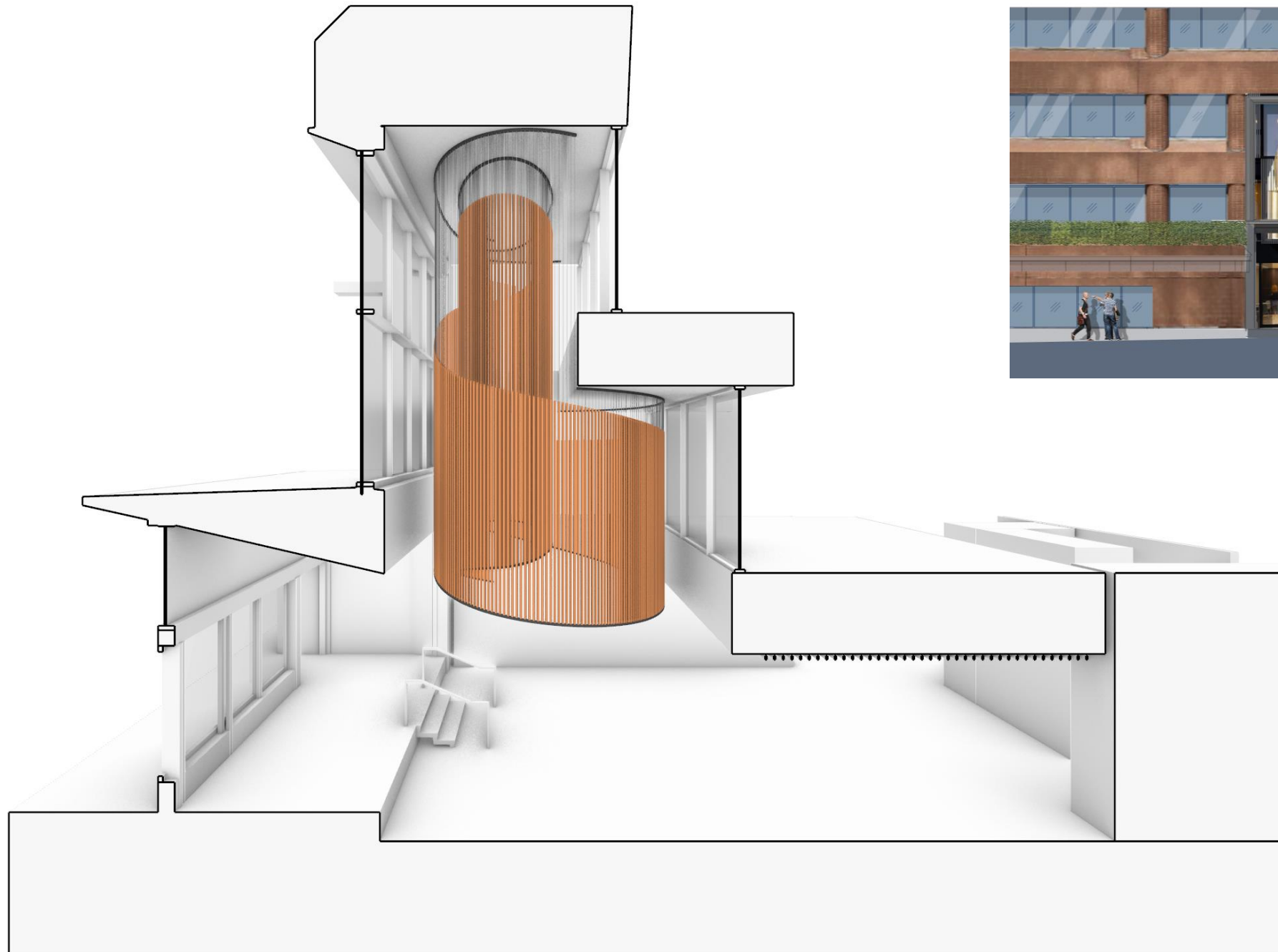
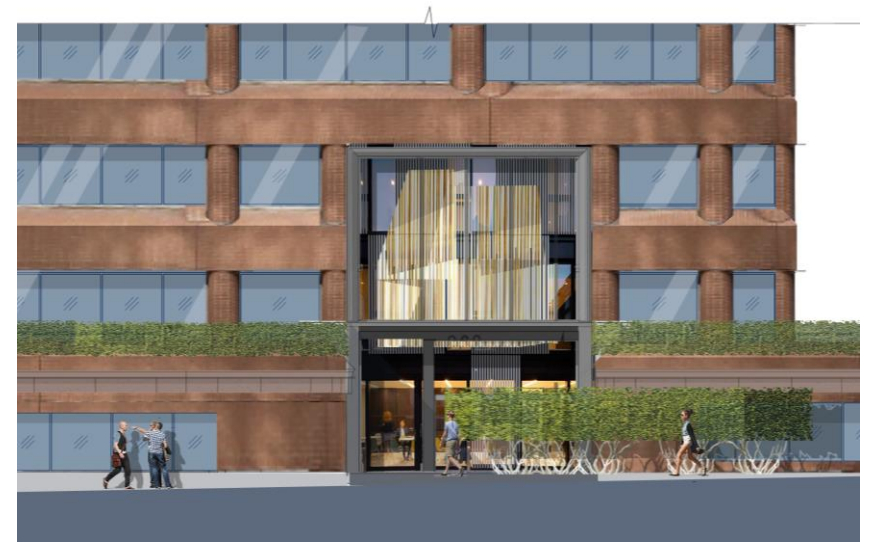
Title: As One, 2014
Technique: Stainless Steel
Size: 25 ft. tall



Title: Transparent Bodies 1 and 2, 2020
Technique: Expanded Steel mesh with spray paint,
Size: 10 x 7 ft. Aprox.



Title: Trust, 2011
Technique: Stoneware and
wood
Size: 26 ft long



WORK IN PROGRESS
Title: The Head, 2023
Technique: Anodized Aluminum
Size: 25 ft. tall

IMAGE LIST AND EXPLANATION

1. MARINE BREATH

This piece belongs to the series “Water Square” developed during 2018 and 2019 for Alta Developer’s iconic building, Quadro, located by the Design District in Miami, FL.

The series was developed to give identity to the building by creating an “under the sea” experience. Visitors are greeted by the enormous stainless-steel installation that surrounds the first four floors of the building, where the parking lot is. These stripes located on the east and west sides of the building, resemble the gills of a fish and were inspired by the wind in the ocean.

The piece is composed of 146 stainless steel sheets placed on 3,100 galvanized steel anchors, covering more than 6,600 sq.ft. and totalizing over 6,000 linear ft of coil.

Total budget of the entire series was close to \$500,000

2. MARINE MOVEMENT

This piece also belongs to the “Water Square” series.

It is located hanging from the drop-off ceiling and is composed of more than 500 individual pieces, made in anodized aluminum, each one resembling a fish which moves with the wind, to form a school of fish.

To achieve movement, each fish was hanged using ball bearings and a steel support stick.

3. AS ONE

This piece is part of the “Global Vision” series developed in 2014 for Deloitte. It was built to show how the company works by providing different views to the same problem. That’s why the material was a shiny and reflective stainless-steel, worked as a textile that has great movement. In its interior there is a color-changing light that produces a sort of play of lights.

The design and installation of this piece was greatly challenging, since it was heavy (+1,600 lbs.) and large (+25 ft. tall). Therefore, there was intensive work done together with the calculating engineers.

Budget of the whole series was close to \$300,000

4. TRANSPARENT BODIES 1 AND 2

Both pieces also belong to the “Water Square” series developed for the Quadro building. Built and installed in 2020, they resemble two jelly fish in the bottom of the ocean and were built using an expanded stainless-steel mesh that was shaped and then colored with spray paint.

The larger brownish piece is approximately 10 x 7 ft. large, and the green one is 8 x 6 ft. aprox.

5. TRUST

This is one of four vessels created in 2011 for the series “Peace in your journey through life”. They were developed for an insurance company called Euroamerica Financial Services. All four vessels were designed to show the company’s values: “Security”, “Team”, “Trust” and “Opening”.

They were all made in stoneware and recycled wood, over a steel structure. Each one of them weighs over 1,100 lbs. and is 26 ft long. They were all placed 11 inches apart from a huge glass wall.

6. THE HEAD

This is a work in progress that was designed to give identity to an office building that is currently being remodeled by Stars REI on San Francisco, CA. We wanted to include this piece to show how we design each one of our works.

For this project, there was a whole concept of modernization and sophistication developed and there were three pieces designed for the client.

Though the piece was initially designed in anodized aluminum tubes, we are currently working with our patron and suppliers to find a lighter solution. As every large-scale sculpture developed in Chile, this too has great concern for earthquakes in terms of structural design and calculations.

This piece is over 25 ft tall and currently weighs almost 1,300 lbs. The budget for this work is close to \$120,000

FRANCISCO DEL RÍO

1812 Mariners Ln
Weston, FL 33327
francisco@artwithdna.com
www.franciscodelrio.com
www.artwithdna.com
(914) 256-0490

EDUCATION

School of Architecture at Pontificia Universidad Catolica de Chile, Santiago. Master of Arts in Architecture with Honors, 1999

COMMISSIONS

- 2022 260 Townsend, office building in San Francisco, CA
- 2021 Eon II, residential complex in Ft Lauderdale, Florida
- 2017-20 Quadro at the Design District, residential complex in Miami, Florida
- 2017-18 AC Marriott Hotel, Santiago, Chile
- 2017 Imagina Developers, residential complex in Santiago, Chile
- 2016 VDA Developers, residential complex in Santiago, Chile
- 2016 Neosoft, corporate offices in Santiago, Chile
- 2015-16 Site-specific sculptures for private homes
- 2014 Dimension Data, corporate offices in Santiago, Chile
- 2013-14 Deloitte Corporate Offices, Santiago, Chile
- 2012 Freeport McMoran Copper and Gold, corporate offices in Santiago, Chile
- 2012 Eastern Mineral, corporate offices in Santiago, Chile
- 2012 Lo Curro Aesthetic Clinic, Santiago, Chile
- 2010-11 Euroamerica Financial Services, corporate offices in Santiago, Chile
- 2009 Grand Hotel & Casino, Copiapo, Chile

EXHIBITIONS

- 2022 Pine and Palm Exhibition, Coral Springs Museum of Art
- 2022 Colores de Miami, Hispafest Miami
- 2022 Featured permanently in Evey Art Gallery, Palm Beach FL
- 2004 Tierra Mater stand in landscape design exhibition at Casa Mater design show, Santiago.
- 2003 Painting exhibition at the IX National Health Meeting in Santiago.
- 2003 Exhibition at the Construction Week event organized by the Chilean Chamber of Construction. Santiago.
- 2002 "Identity in the Underground Train," project sponsored by the Culture Division of the Chilean Ministry of Education on tour in Europe and the United States.
- 2002 "The Gift of Wine," mural at the Intercontinental Hotel in Santiago.

- 2002 "The Hotel of My Dreams," large-scale painting exhibited in the presidential suite of the Hotel Carrera for art event. Santiago.
- 2002 "Symphonic Gestures," solo show at the Cultural Institute of Providencia, Santiago.
- 2002 Casa Mater, artwork featured in stand presented by renowned interior designer Javier Pinochet. Santiago.
- 2000 "Painters of 2000," Cultural Institute of Las Condes, Santiago.
- 1992 "Painter Architects," group exhibition at the Campus Lo Contador Hall of Pontificia Universidad Catolica de Chile, Santiago.

AWARDS

- 2020 Artwork selected to be showcased during "Borders! 2020" in Venice, Italy
- 2014 Finalist, "Entrepreneur of the Year," contest organized by the Association of Entrepreneurs of Chile (ASECH) honoring the most innovative business concepts nationwide.
- 2000 First Prize, "Painters of 2000," in situ painting competition at Cultural Institute of Las Condes, Santiago, Chile.

PUBLICATIONS

- 2020 Chef & Hotel (magazine), "Urbano y Memorable en lo más alto de Sudamerica", Oct. 28
- 2020 Haute Residence, "Haute 50 Development: Quadro At Miami Design District", Sept. 23
- 2020 Haute Residence, "30 Residences Sold In 30 Days at Quadro Miami Design District", Oct.27
- 2020 ProfileMiamiRE.com, "Profile Exclusive: Developing In Miami's Ever Changing Urban Landscape With Raimundo Onetto Of Alta Developers", Sept. 4
- 2020 HolaLatinosNews.com, "In the Heart of Design District: Turn-Key Residences Where Art Is Integrated Throughout the Entire Development", Sept.3
- 2014 ED (architecture and interior design magazine), "Mix and Match", May 30
- 2011 "Piece in Our Journey Through Life: Art in Euroamerica" (book)
- 2004 VD (interior design magazine), "Trends Meeting: Casa Mater 2004"

WORK EXPERIENCE

- 2016-Present Founder and Art Director, Art with DNA USA (art studio in the United States)
- 2006-2016 Founder and Art Director, ArteArquitectonico (art studio in Chile)
- 2004-2005 Architect, R&R International Business Consultants
- 1996-2004 Independent/Freelance Architect

LIST OF PROFESSIONAL REFERENCES

1.- STARS REI

Charlotte Huth

Ph.: (617) 775 1225

rchuth@starsrei.com

2. ALTA DEVELOPERS

Raimundo Onetto, Principal

Ph.: (786) 230-1040

ronetto@altadevelopers.com

3.- DELOITTE

Ricardo Briggs, Regional Managing Partner of Deloitte Chile

Ph.: +56 9 9331 0150

rbriggs@deloitte.com

5.- EASTERN MINERAL (Minera Cordillera)

Jaime Lagos, CEO

Ph.: +56 9 8299 3604

jlagos@cmccordillera.cl