

# EXHIBIT A



*Reconstructed Natures*  
*gt2P for Alta Coral Gables LLC*

**great  
things  
to People.**  
children design

web: <http://gt2p.com/>

Instagram: @gt2P

Paracrafting:

## Between Digital Crafting and Physical Parametrics



**Sebastián Rozas,**  
-Cofounder gt2P  
-Architect  
-Project Manager

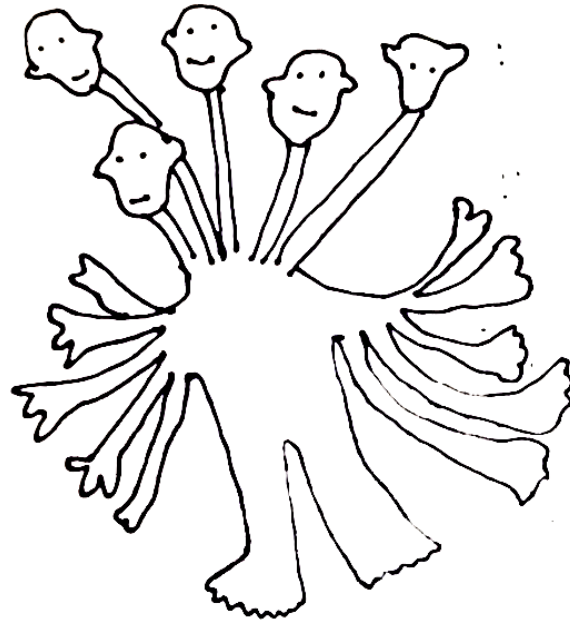
**Guillermo Parada,**  
-Cofounder gt2P  
-Architect  
-Creative Director

**Tamara Pérez,**  
-Cofounder gt2P  
-Architect  
-Production Manager

**Victor Imperiale,**  
-Partner gt2P  
-Architect  
-Parametric Director

Represented by :

**FRIEDMAN BENDA**







**DENVER  
art  
MUSEUM**

Remolten  
Stools



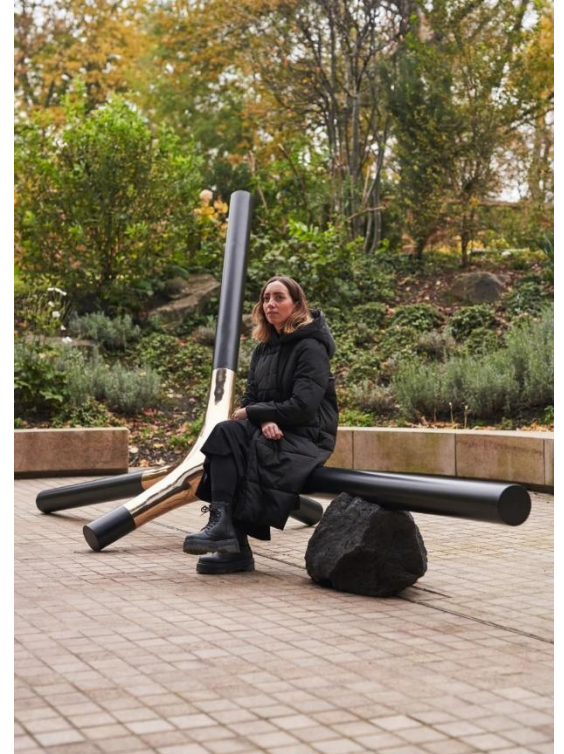
**THE  
MET**

Less CPP: Catenary  
Pottery Printer  
Lights



**DENVER  
art  
MUSEUM**

Marble vs  
Bronze  
Stools



**the  
DESIGN  
MUSEUM**

Suple Bench



MIAMI  
DESIGN  
DISTRICT

Conscious Actions  
Swing



COOPER  
HEWITT  
Smithsonian Design Museum

Remolten Monolita  
Chair



NGV

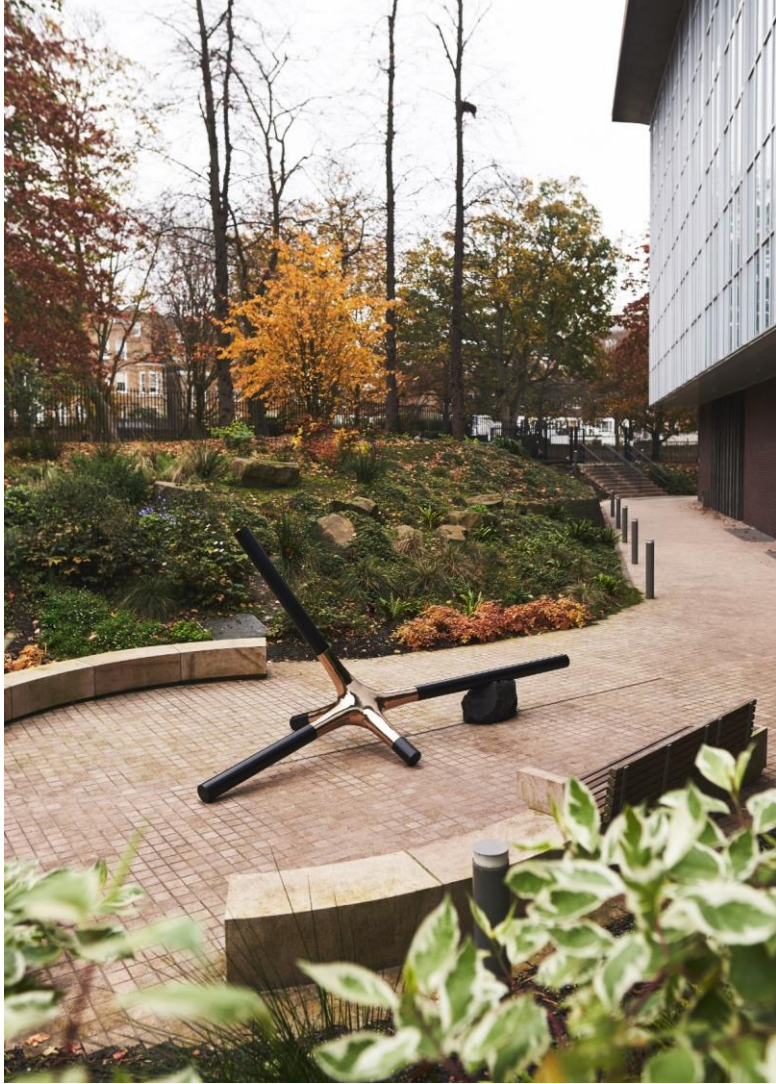
Remolten  
Stool



Bard  
Graduate  
Center

Less CPP  
Device





**Suple Bench**  
Sculptural Bench,  
London Design  
Museum,  
London, UK





**Hexa Shhhh**  
Sculptural Pavilion,  
USA





**Hexa Shhhh**  
Sculptural Pavilion,  
USA





**Leaves**  
Sculptural Shaders,  
USA





**Leaves**  
Sculptural Shaders,  
USA

PROJECT DEVELOPMENT TEAM  
Reconstructed Natures



great  
things  
to People.  
chileno design  
*ARTIST*



**IGNITION ARTS**

*PRODUCER & INSTALLER*



*STRUCTURAL ENGINEERING*

RECONSTRUCTED NATURES

Design, Development, Fabrication, Engineering & Installation Team



## IGNITION ARTS / INNOVATIVE FABRICATION FOR ARTS & INDUSTRY

Indianapolis, Indiana 317-363-0440 [www.ignitionarts.com](http://www.ignitionarts.com) [info@ignitionarts.com](mailto:info@ignitionarts.com) IG: @ignitionarts

2022 *DROP*, Volkan Alkanoglu, Eaton Elementary School, Washington, DC. Budget: \$75,000.

2022 *FREED*, Hood Design Studio, John Robinson, Jr. Town Square, Arlington, VA. Budget: \$150,000.

2022 *1000 Suns*, FUTUREFORMS, Cityline, Sunnyvale, CA. Budget: \$400,000.

2022 *Triptych: Aura, Hooray, Pebble*, Hou de Sousa, WMATA Headquarters, Washington Metro Area Transit Authority, Washington, DC. Budget: \$350,000.

2022 *Urban Fabric*, Project One Studio, 4th Street Parking Garage, Bloomington, IN. Budget: \$350,000.

2022 *Great Joy*, Blessing Hancock, Goodyear Civic Square, City of Goodyear, Goodyear, AZ. Budget: \$200,000.

2021 *Drift*, Volkan Alkanoglu, Westcreek Drive, Fort Worth Public Art, Fort Worth, TX. Budget: \$330,000.

2021 *BOW*, Hood Design Studio, Fire Station #35, San Francisco Arts Commission, San Francisco, CA. Budget: \$250,000.

2020 *Pangaea*, Rob Ley, NCR Headquarters, Atlanta, GA. Budget: \$165,000.

2020 *Equitas*, Blessing Hancock, Salem Public Art Commission, Salem Police Station, Salem, OR. Budget: \$130,000.

2019 *Three Trees: Jackson, Obama, Washington*, Hood Design Studio, Chicago Architecture Biennial, Chicago, IL. Budget: \$35,000.

2018 *Wanderwall*, THEVERYMANY, Novel Stonewall Station, Charlotte, NC. Budget: \$1,500,000.

2017 *Marquise*, THEVERYMANY, City of El Paso, El Paso, TX. Budget: \$300,000.

2017 *Wavelength*, Emily White, Ft. Lauderdale Hollywood International Airport, FL. Budget: \$400,000.

2017 *Morning Glory*, Sopheap Pich, The Donum Estate, Sonoma, CA. Budget: \$330,000.

2015 *Stream/Lines*, Mary Miss, Center for Urban Ecology at Butler University, Indianapolis, IN. Budget: \$500,000.

## ADVANCED DESIGN & FABRICATION

Headquartered in Indianapolis, Ignition Arts specializes in design development, project management, fabrication, and installation of large-scale public art projects for national and international artists, architects, and designers. Ignition Arts employs computational design strategies in tandem with digital and traditional fabrication methods that enable creatives to realize complex ideas.

## IA TEAM LEADERSHIP

### Brian McCutcheon

Owner & Chief Design Officer

Brian McCutcheon is an artist with over 20 years experience creating public art, sculpture, and photography. His extensive experience on both the creative side and the production side of the public art process makes him a highly effective fabrication leader and project manager.

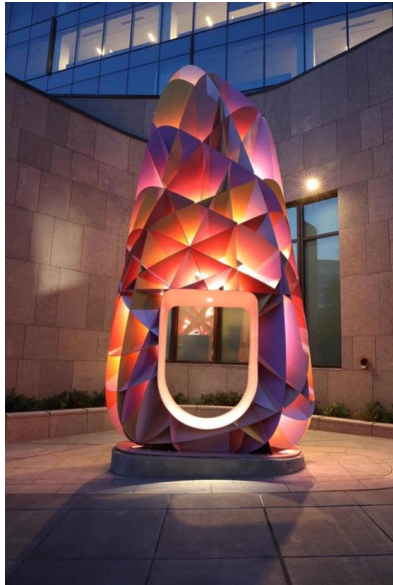
### Tasker Day

Co-Founder & Chief Operations Officer  
Tasker Day brings decades of experience running operations and managing finances for creative businesses & nonprofits. His comprehensive understanding of contracting and business logistics facilitate the successful execution of complex, large-scale projects.

## RESOURCES TO MAKE THE EXTRAORDINARY POSSIBLE

Ignition Arts specializes in using the latest digital tools and technologies to mediate between concept and real-world fabrication. We achieve this through the steady acquisition of leading-edge equipment, and the cultivation of a highly skilled team. Our staff includes professionals with high-level training in architecture, programming, sculpture, metalworking, CNC operation and more - with a collective ability to problem-solve the design, build, transportation, and installation strategies for 100% unique projects. Our Indianapolis headquarters is perhaps our greatest resource, providing us with access to ample amounts of physical space, a robust network of industry experts, and a rich history of auto manufacturing and custom car culture - all of which coalesce into a remarkable setting for creating visionary work.

**IGNITION ARTS**  
Production & Installation





## **Company Profile**

CRAFT | Engineering Studio is a visionary studio of structural engineering consultants who are passionate about the pursuit of art and architecture from the vantage point of the engineer. We are an internationally diverse team that operates as a studio to allow a free flow of skills and knowledge within our office environment. We rely on multidisciplinary backgrounds that include product design, architecture and computation to augment our practice as structural engineers. Our passion for the arts allows us as engineers to more effectively engage and communicate with architects, artists and fabricators as clients. We understand the need to be open-minded and creative thinkers which leads to imaginative problem solving and innovative solutions. CRAFT caters to the client who challenges traditional notions of structural engineering consulting and seeks a creative and collaborative partner in the process of design and its execution.

CRAFT was founded in the spring of 2010 by Nathaniel M. Stanton PE CE SE AIA to more effectively address the desire among architects for an engineering consultant that is progressive and forward thinking but operates on a scale that engenders creativity and collaboration between disciplines. This pursuit builds on over 25 years of experience in the analysis and design of high-end residential and commercial structures in a variety of settings including high seismic regions and coastal zones subject to flooding and hurricane force winds.

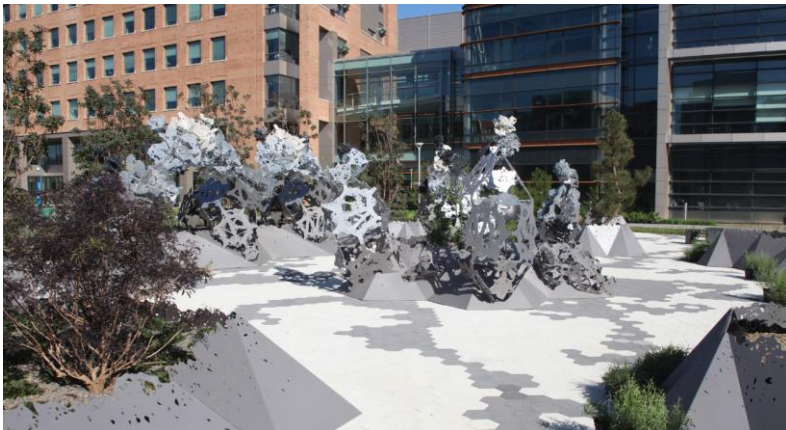
## **Services**

CRAFT employs cutting edge software for the analysis and documentation of our projects which allows us to collaborate with our clients to provide a seamless flow of information throughout a project's life-cycle. Building Information Modeling technology is used iteratively to link documentation directly to analytical engines to create an efficient process of project design.

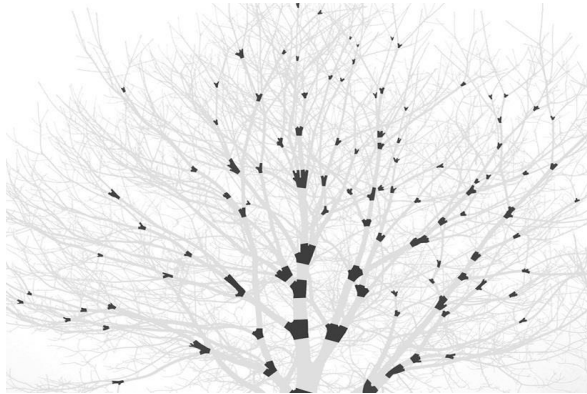
For the analysis of structures, CRAFT blends traditional experience and expertise with computational and analytical tools to offer solutions to clients that are efficient and practical yet innovative. Beyond traditional linear and non-linear techniques, CRAFT employs advanced analytical methods such as solid Finite Element Analysis for the structural design of components and assemblies within the scope of our projects. Computation empowers our approach to the form finding, rationalization and optimization of structures with complex geometries in a broad spectrum of materials.



**CRAFT | Engineering Studio**  
Structural Engineering



*How do we create this pieces?*



Inspiration in nature



We can always add or remove paths

Top Curves	
Bottom Curves	
JOINT Length	52
JOINT Leg's Width	10
JOINT Leg's Length	5
MESH Smoothness	3
MESH Relaxation	300
INSET Length	-8
INSET Diameter	5.0
LEGS Shape Scaling	0.00
Coincident Original Vertex	True

design the algorithm



Digital Crafting



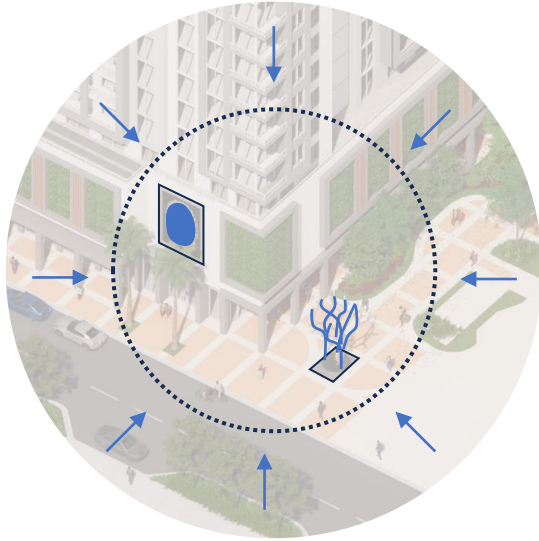
Hand Crafting



Object Family / Paracrafting

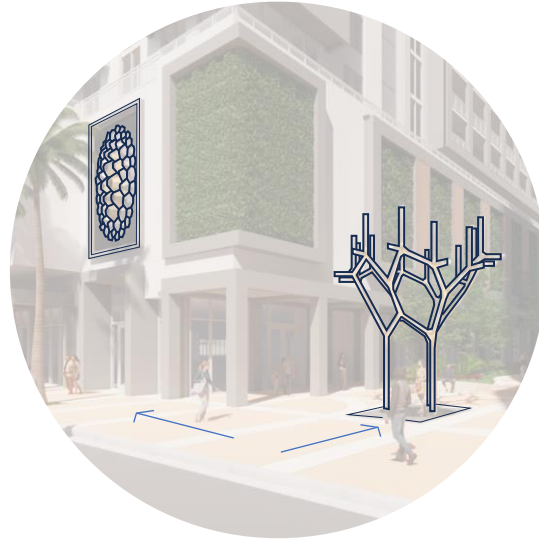
*How can we contribute to the city's vision for  
public art?*





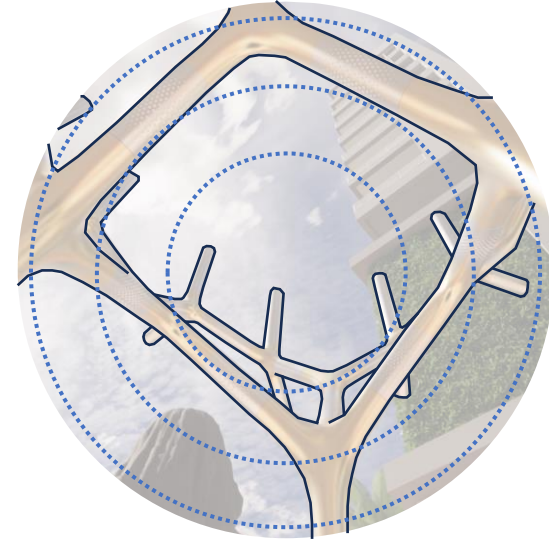
### Landmark

From afar the pieces work as a collection that populates the corner of the paseo with reminiscences of the values of Coral Gables.



### Geometry and invitation

Up close appears the detailed geometry and texture that invite you to get even closer and be part of the piece.



### Inner Space

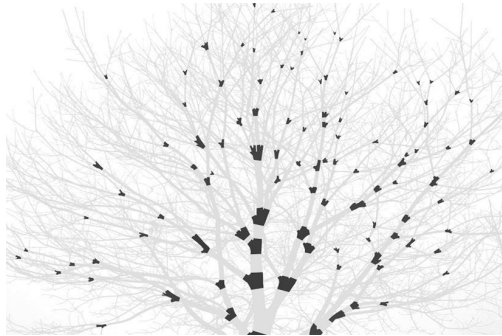
An experience of introspection and connection with the piece.

The three instances of artistic experience around the pieces

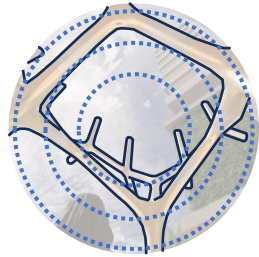
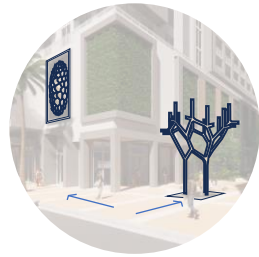
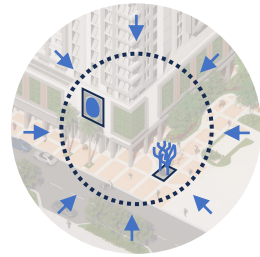
*Where can we find those geometries?*



*Inspiration in Coral Gables's characteristic nature  
as a way to bring diversity to the city*



+



+



*How would it work?*

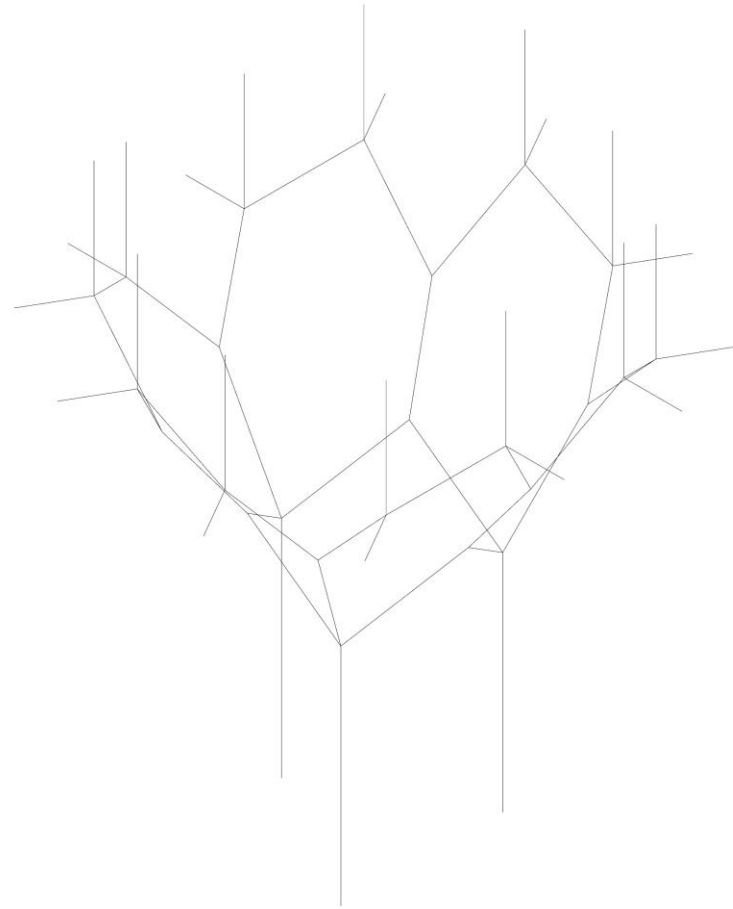
RECONSTRUCTED NATURES  
SUPLE TREE SCULPTURE



+



*Suple Tree Sculpture is a piece inspired by the grapefruit trees that allowed the development of Coral Gables, using the algorithm of our previous project Suple*

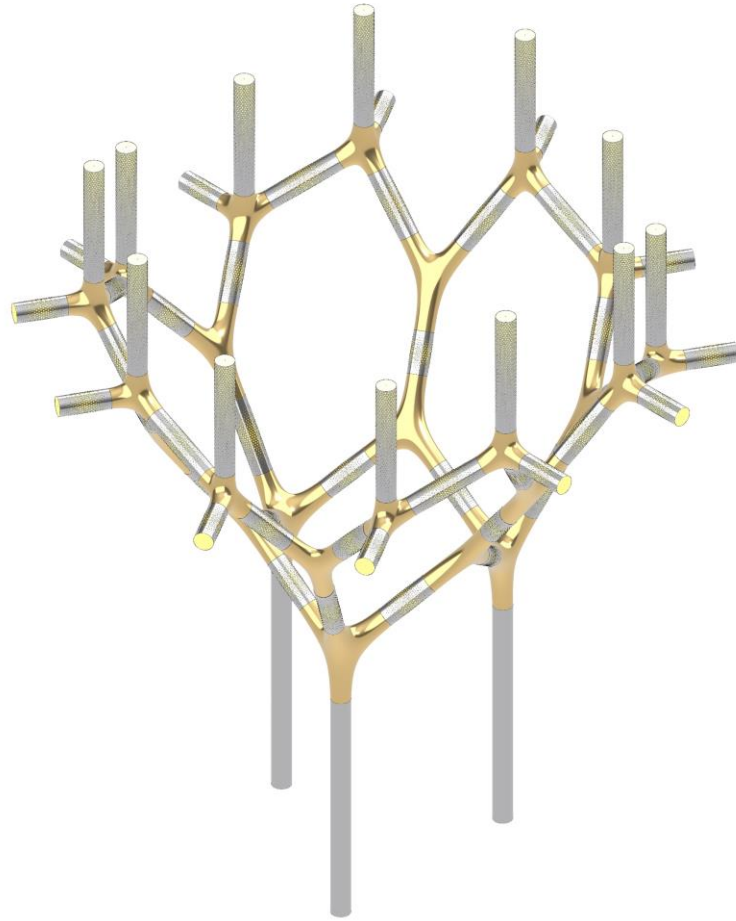


Guidelines for the branches to grow



Designing the family of nodes





Connecting the branches between each other



RECONSTRUCTED NATURES:  
SUPLE TREE SCULPTURE



**SUPLE TREE SCULPTURE**

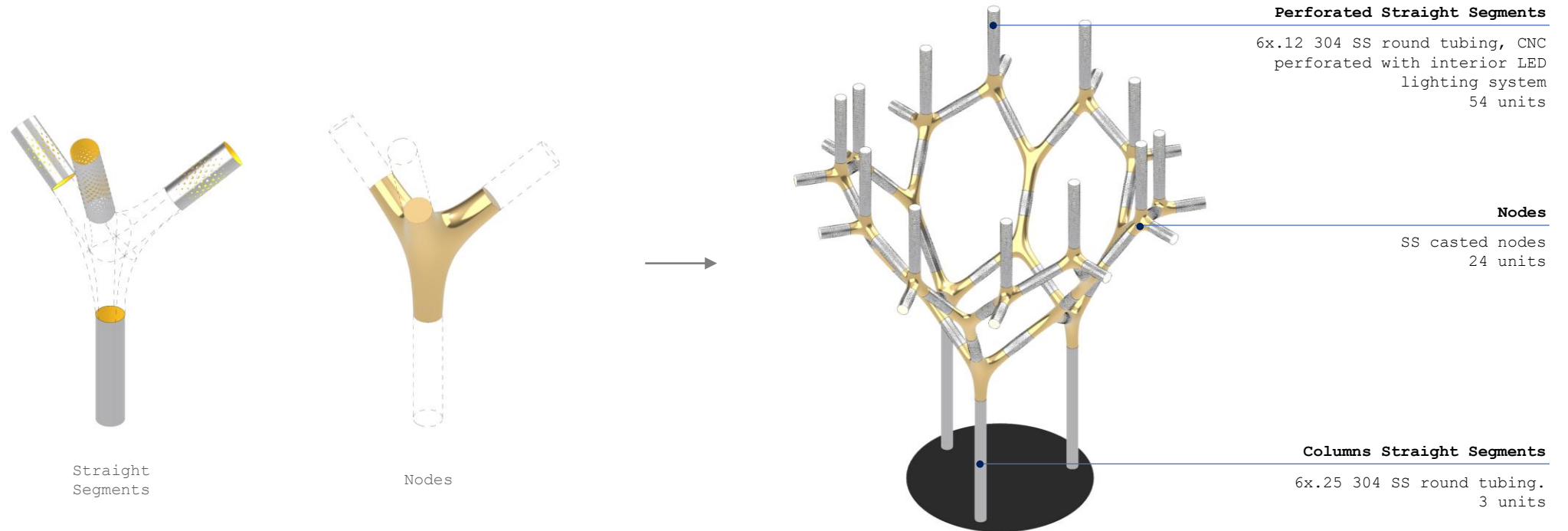
**Size:** 16' 9" (5,1m) - 16' 9" (5,1m)

**Height:** 19' 5" (5,9m)

**Weight:** 5.000 lbs. (2.268 kg)

GENERAL INFORMATION  
Suple Tree Sculpture

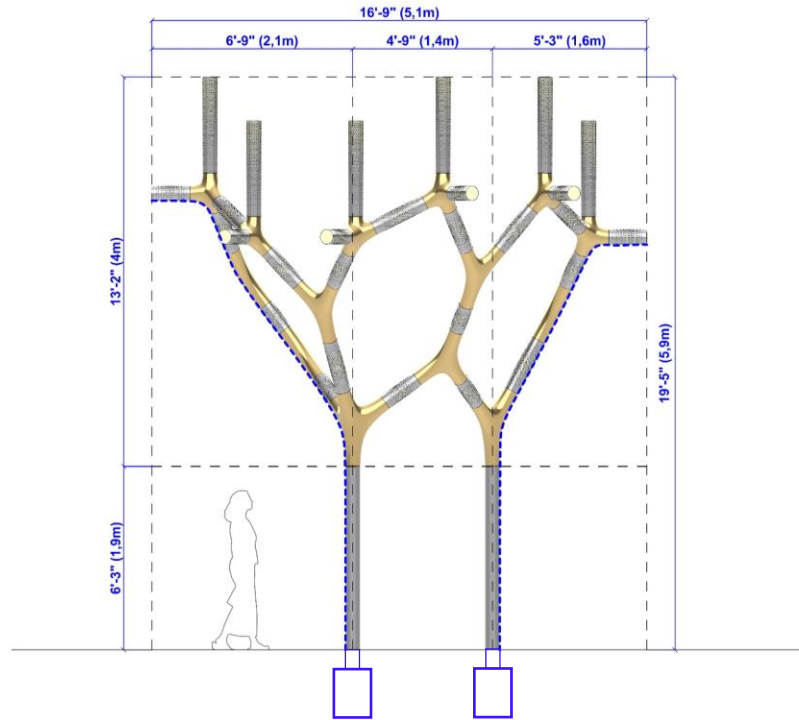
FABRICATION METHOD  
Suple Tree Sculpture



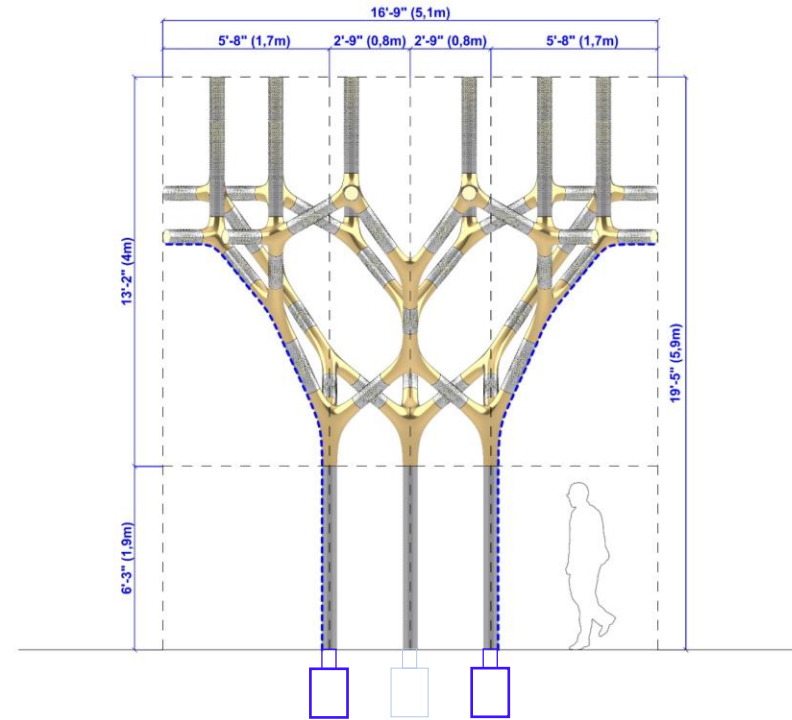
*Straight segments are made from two types of standard stainless-steel pipes with  $\phi 6''$ , one type is CNC perforated for the upper sections segments and have an interior LED lighting system. Nodes segments are painted in bronze color*

STRUCTURAL CONSIDERATIONS  
Suple Tree Sculpture

Side View



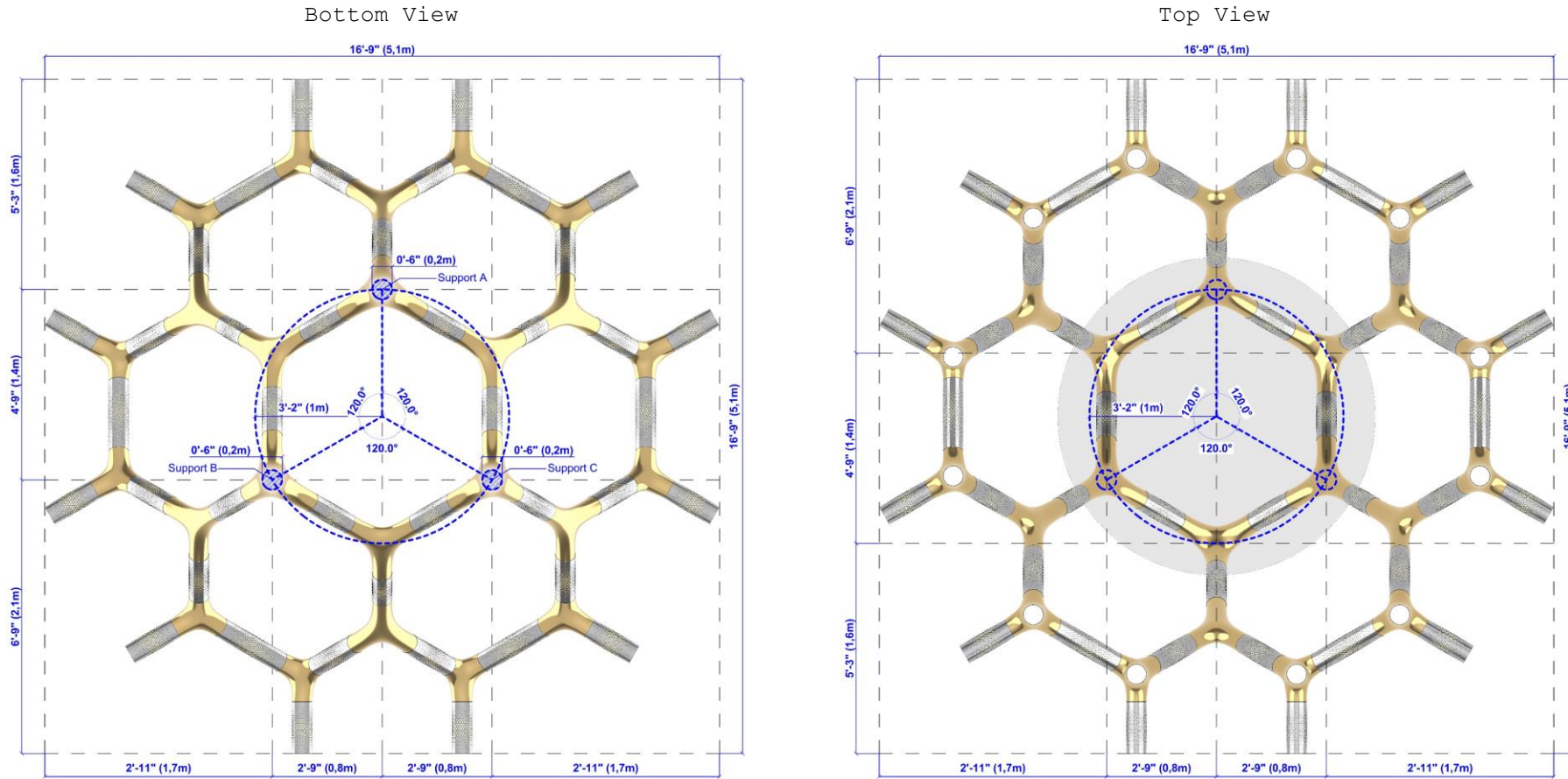
Front View



*The sculpture's columns will be attached to the ground with concrete footings designed & specified by CRAFTS considering all Miami's hurricane laws*



STRUCTURAL CONSIDERATIONS  
Suple Tree Sculpture



*The sculpture is made from a symmetrical shape so its weight get distributed proportionally to the ground through three (3) supports (A,B & C)*

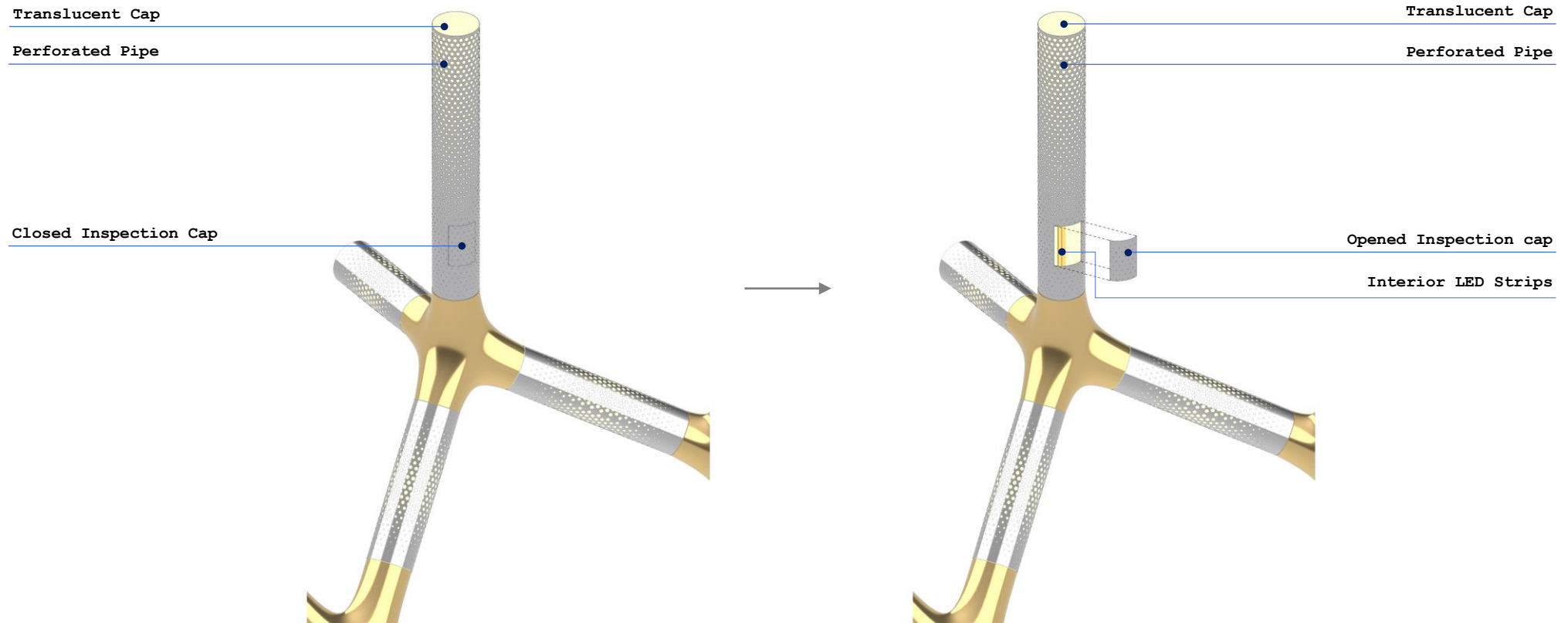
LIGHTING  
Suple Tree Sculpture



*The overall lighting effect from the piece is intended to create a warm ambient around it for the access to the paseo from Salcedo Street and won't be affecting the upper units*



LIGHTING  
Suple Tree Sculpture



*The sculpture considers inspection caps on all perforated pipes segments to allow the replacement of the LED strips inside them when necessary.*

ARTWORK RENDERING  
Suple Tree Sculpture



**SUPLE TREE SCULPTURE**

View from paseo entrance to the sculpture - Day Time





**SUPLE TREE SCULPTURE**

View from Salzedo street to the sculpture - Day Time





**SUPLE TREE SCULPTURE**

View from paseo entrance walking by the sculpture - Day Time





**SUPLE TREE SCULPTURE**

View of people walking through the sculpture's columns - Day Time





SUPLE TREE SCULPTURE

View from underneath the sculpture - Day Time





**SUPLE TREE SCULPTURE**

View from east sidewalk on Salzedo street to the sculpture - Day Time





**SUPLE TREE SCULPTURE**  
Front view of the sculpture on paseo's entrance - Day Time





SUPLE TREE SCULPTURE  
View from paseo entrance to the sculpture - Night Time





SUPLE TREE SCULPTURE

View from Salzedo street to the sculpture - Night Time





SUPLE TREE SCULPTURE

View from paseo entrance walking by the sculpture - Night Time

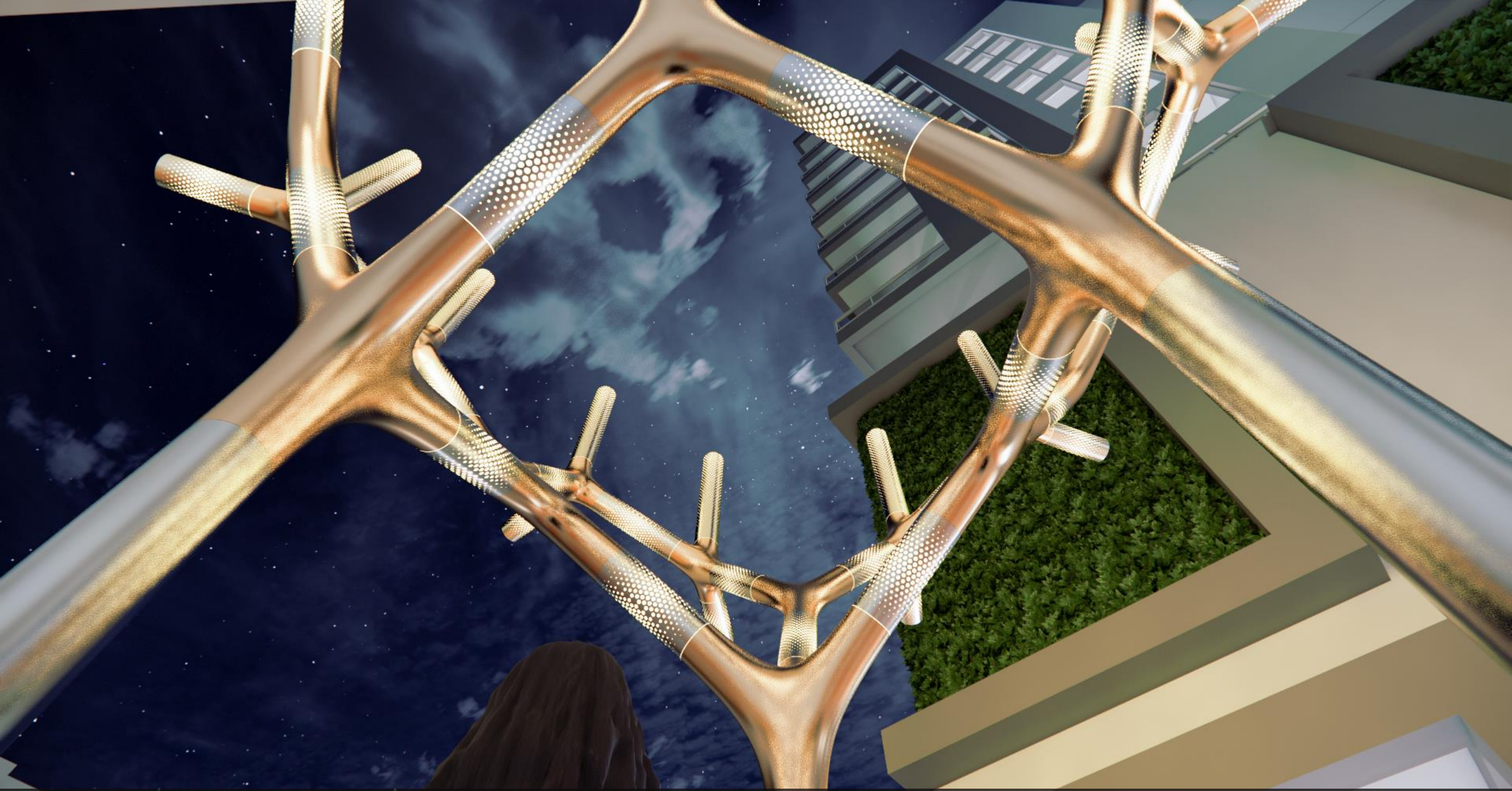




SUPLE TREE SCULPTURE

View of people walking through the sculpture's columns - Night Time





SUPLE TREE SCULPTURE  
View from underneath the sculpture - Night Time





SUPLE TREE SCULPTURE

View from east sidewalk on Salzedo street to the sculpture - Night Time

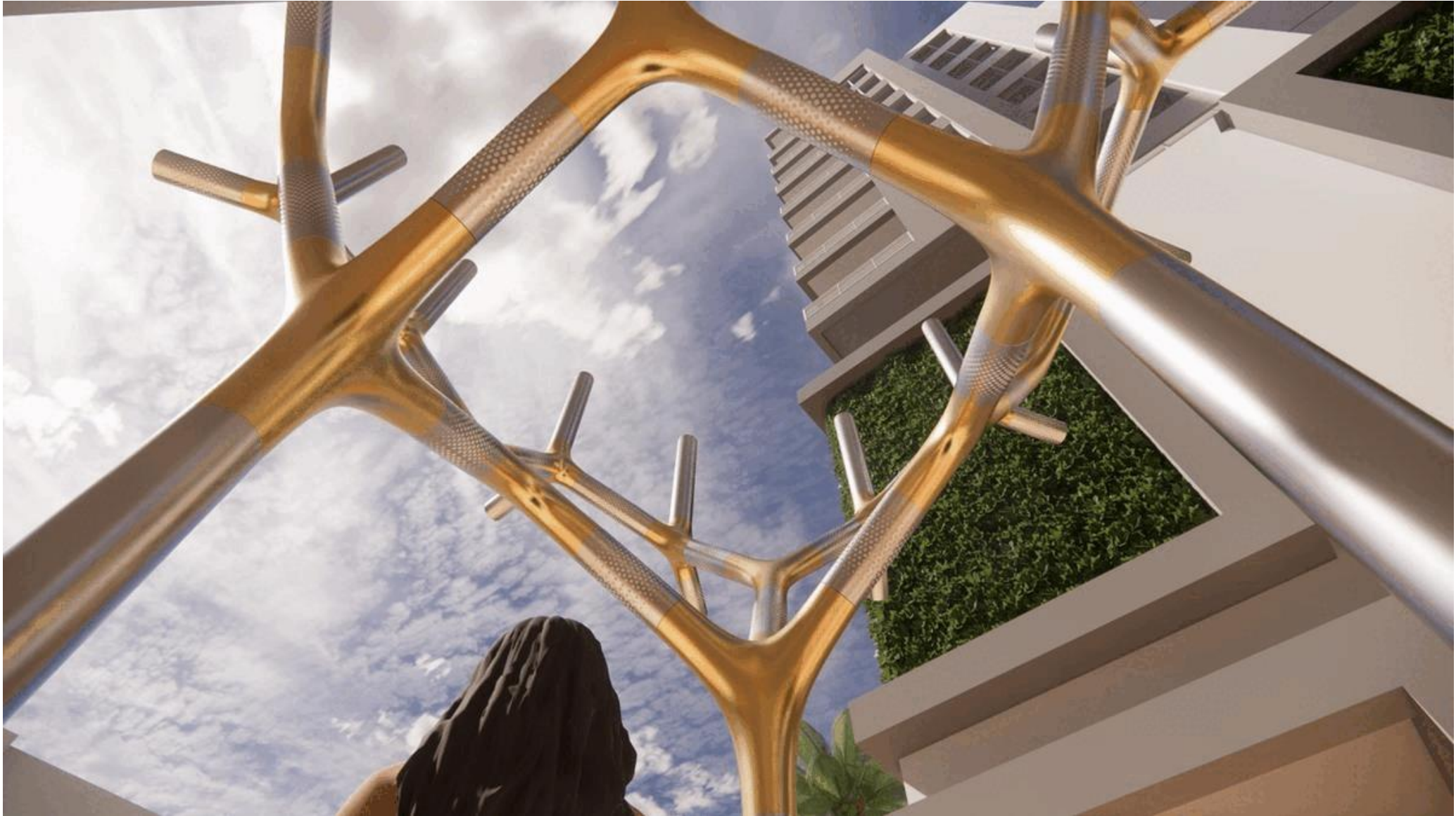




SUPLE TREE SCULPTURE

Front view of the sculpture on paseo's entrance - Night Time





**SUPLE TREE SCULPTURE  
TIMELAPSE**

## TECHNICAL INFORMATION

### SUPLE TREE

#### MATERIALS

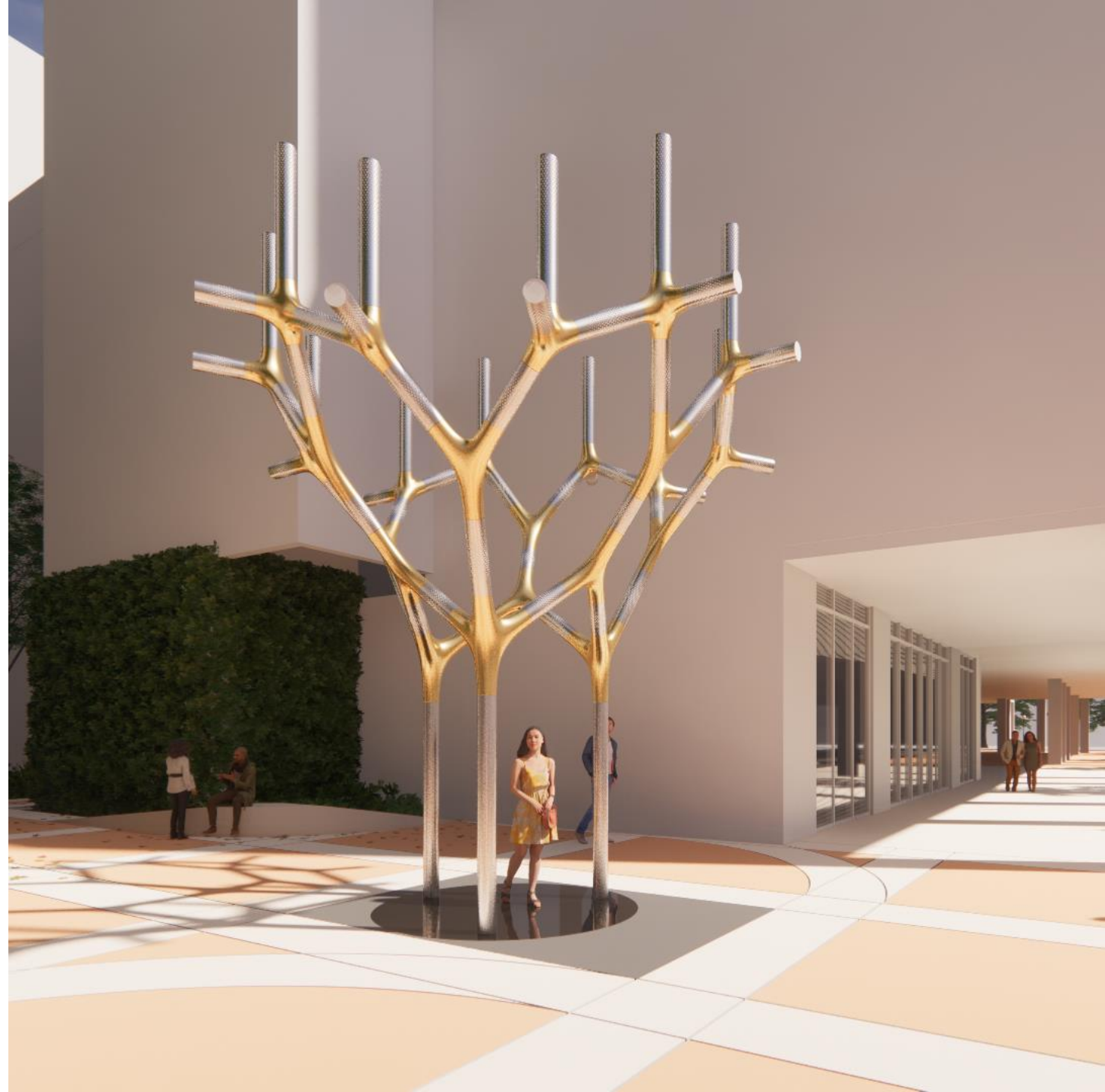
- 304 Stainless Steel Cast Nodes
- 304 Stainless Steel Perforated Round Tubes
- 304 Stainless Steel Base Plates
- Interior LED Strip Lighting System

#### COATING

- Paint (Brand PPG - Product Line Matthews Paint)
- Epoxy Primer (sealing step in paint)
- Matthews Acrylic Polyurethane - Super Satin Clear (10-year warranty extension and can be reapplied to the piece without the need for disassembly)

Super Satin Specs Link:

<https://drive.google.com/drive/folders/1UsGJBxoTTKd440yIIZnG-cmEgiujBE2X?usp=sharing>



*\*All material and specs to be reviewed by IA Structural Engineer during Design Development*



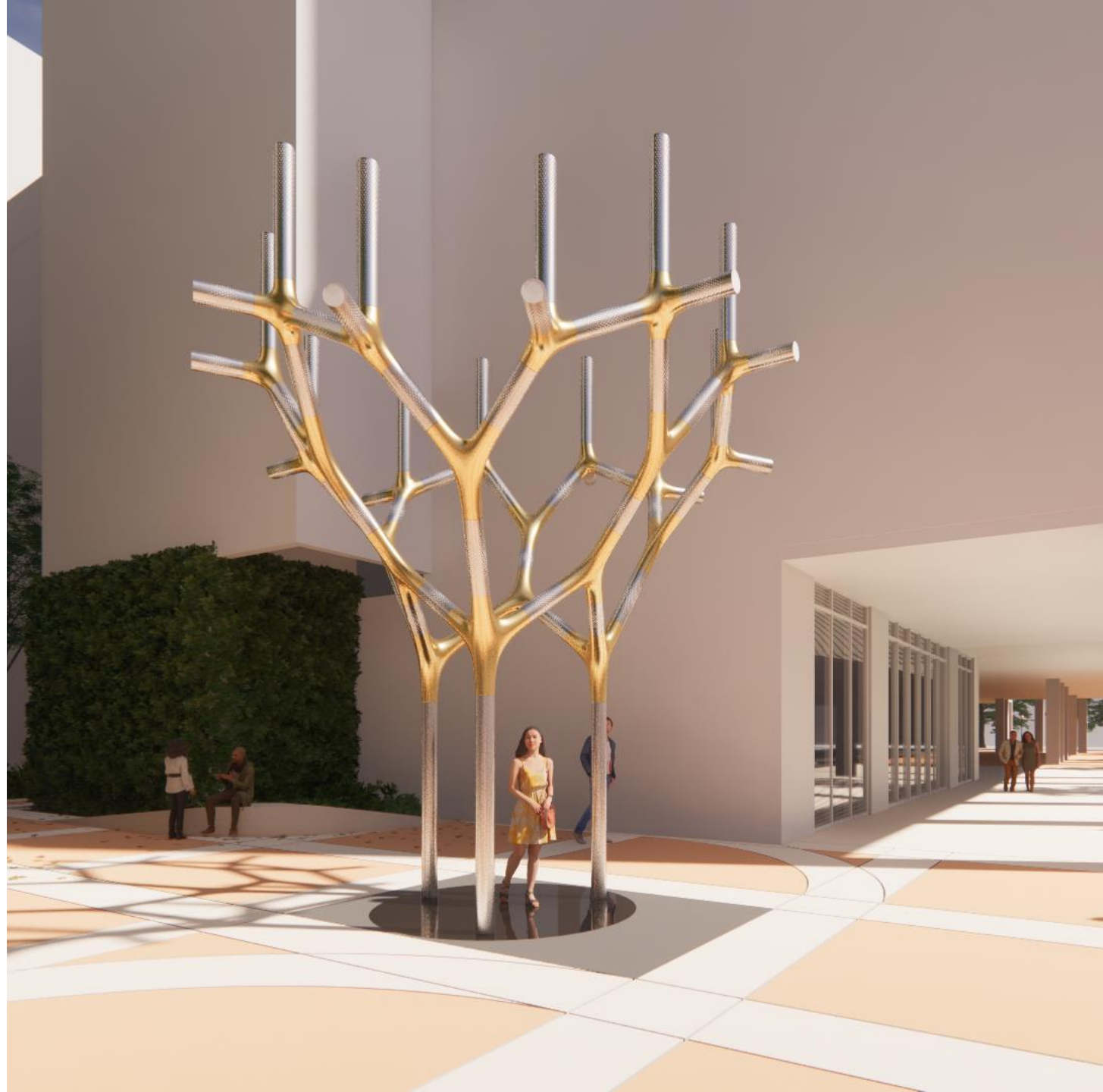
## TECHNICAL INFORMATION

### SUPLE TREE

#### MAINTENANCE PLAN

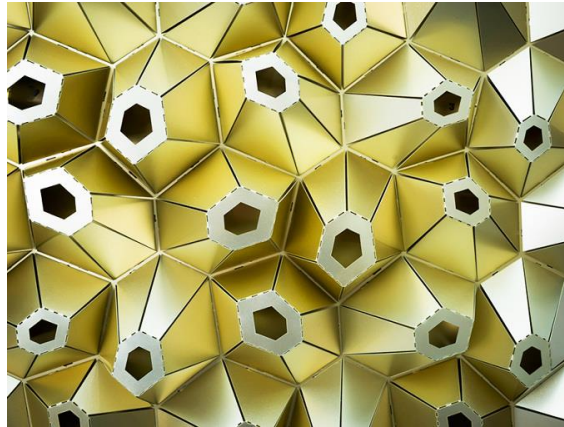
- Inspect and clean bi-annually
- Never use abrasives on stainless steel
- In case of dirt & grime use warm soapy water and a clean/ new soft cloth
- In case of oils stains, adhesive marks & tapes use isopropyl alcohol followed by a thorough clean afterwards with warm water
- In case of water scales use vinegar followed by a thorough clean afterwards with warm soapy water
- In case of mild rust use a cleaner that includes phosphoric, oxalic, or sulfamic acid to clean rust marks. Carefully flush the area with warm soapy water after and be careful that any acid doesn't wash off onto other areas around the stainless steel
- Matthews Paint Maintenance and Specs boiler Link: <https://drive.google.com/drive/folders/1QUqmBnOkRYYgJfAHgNgii7nN19WQHLaI?usp=sharing>
- Graffiti Removal Guidelines Specs Link: <https://drive.google.com/drive/folders/ly-FkzQ7zYpPMk-XVeOzi9riHLvg7-hlO?usp=sharing>

*\*All material and specs to be reviewed by IA Structural Engineer during Design Development*



RECONSTRUCTED NATURES  
CORAL MURAL

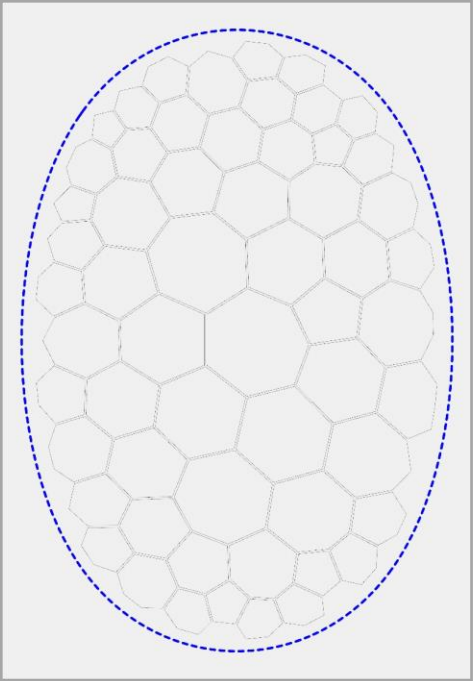




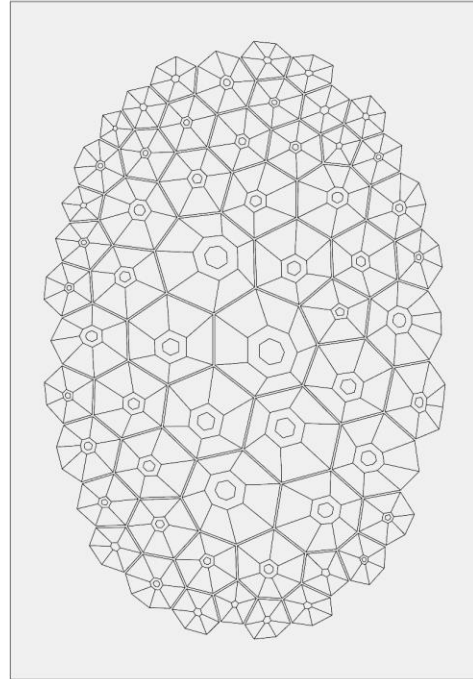
+



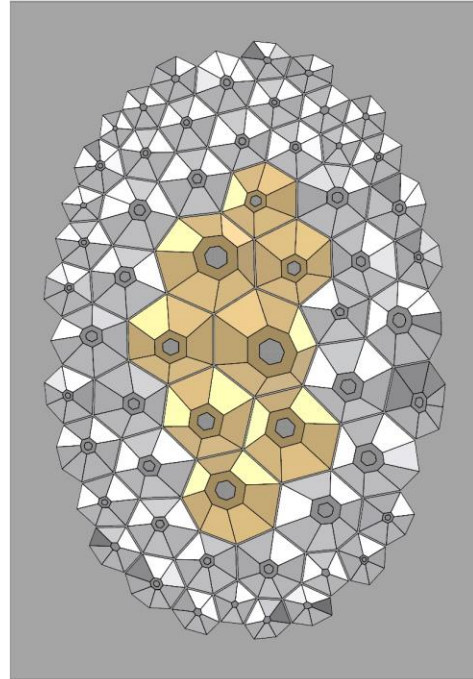
*Coral Mural is a piece inspired by the coral stones underneath Florida's sea  
using the algorithm of our previous project Hope keeper*



Population of existing wall with coral's geometry

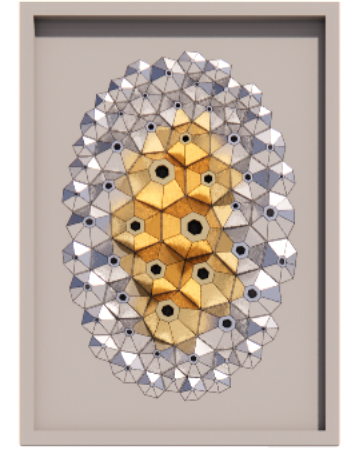
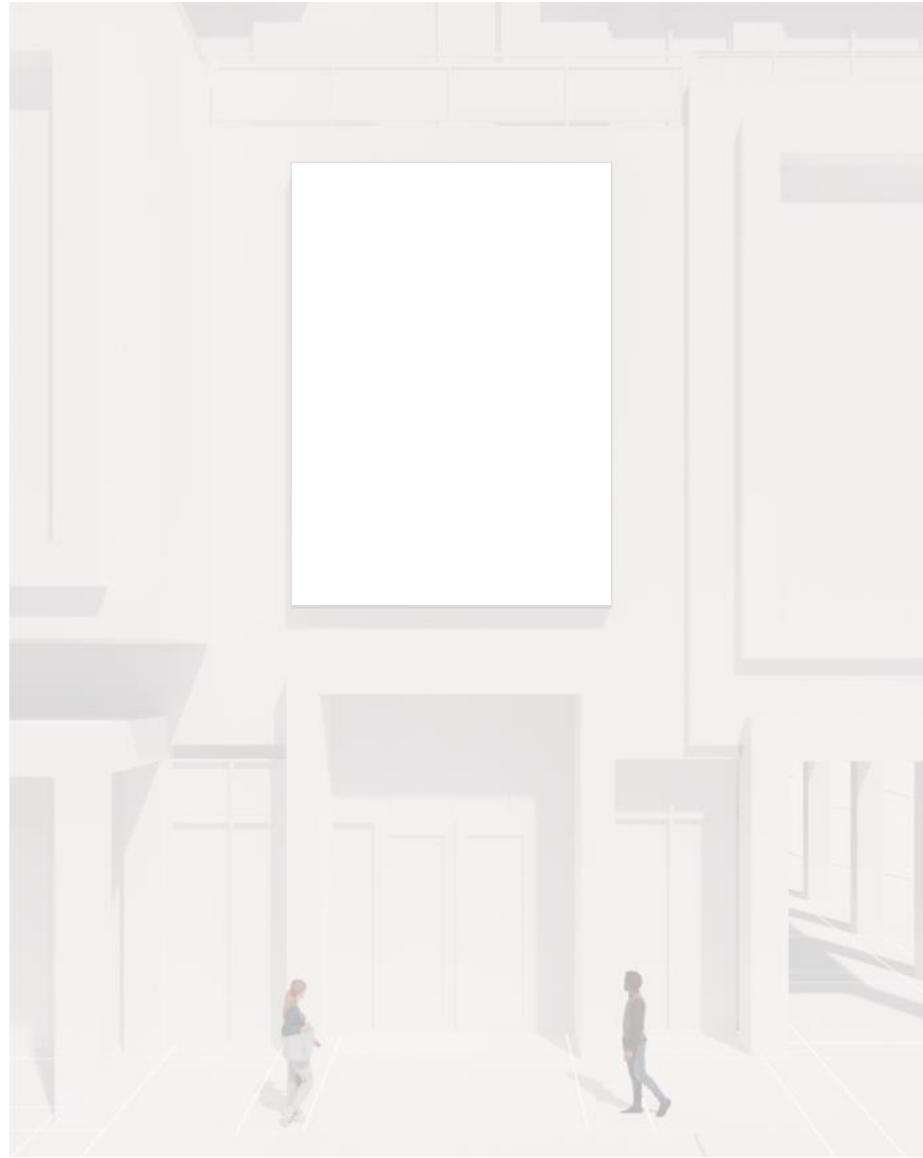


Extrusion of cells to create texture



Applying the colors





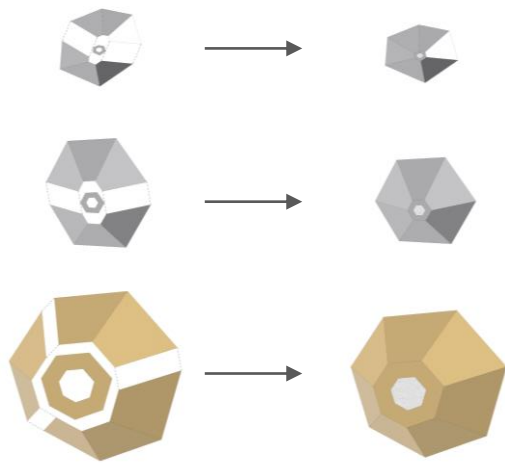
RECONSTRUCTED NATURES:  
CORAL MURAL



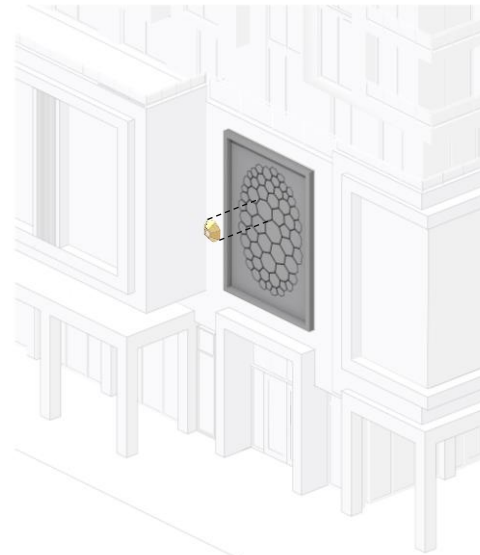
**CORAL MURAL**  
**Size:** 18' 4" (5,6m) - 12' 9" (3,9m) **Depth:** 1' 2" (0,4m) **Weight:** 600 lbs. (272 kg)

GENERAL INFORMATION  
Coral Mural

FABRICATION METHOD  
Coral Mural



Coral Cells  
assembling



Drilling cells to  
existing wall



Completed Mural

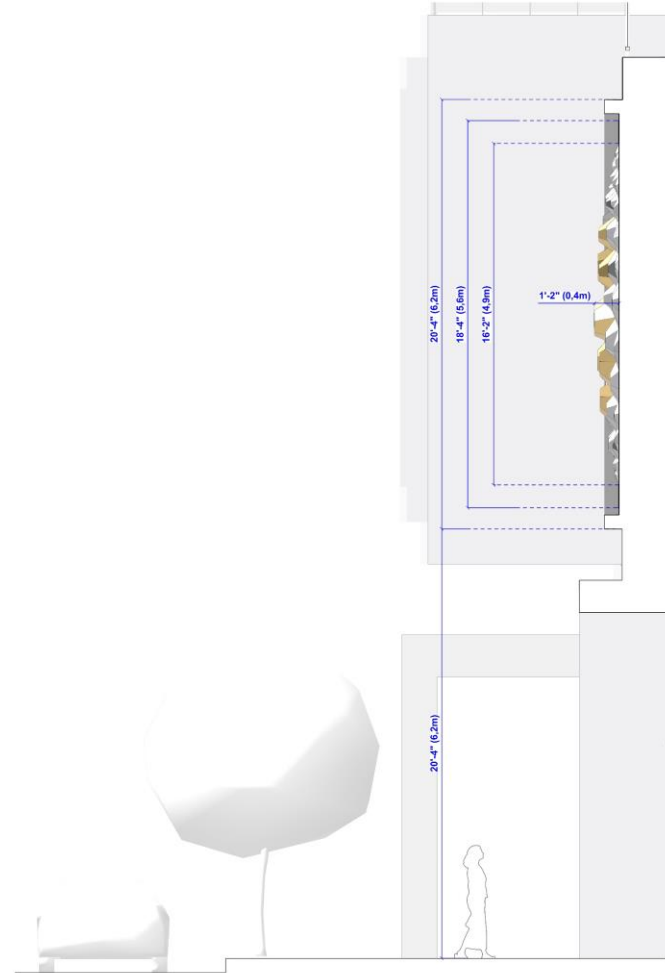
*Each coral cell is composed from two (2) to three (3) CNC laser cut and folded steel sheets that are bolted together. One by one all the fifty-eight (58) Coral cells are drilled to the canvas wall*





# STRUCTURAL CONSIDERATIONS

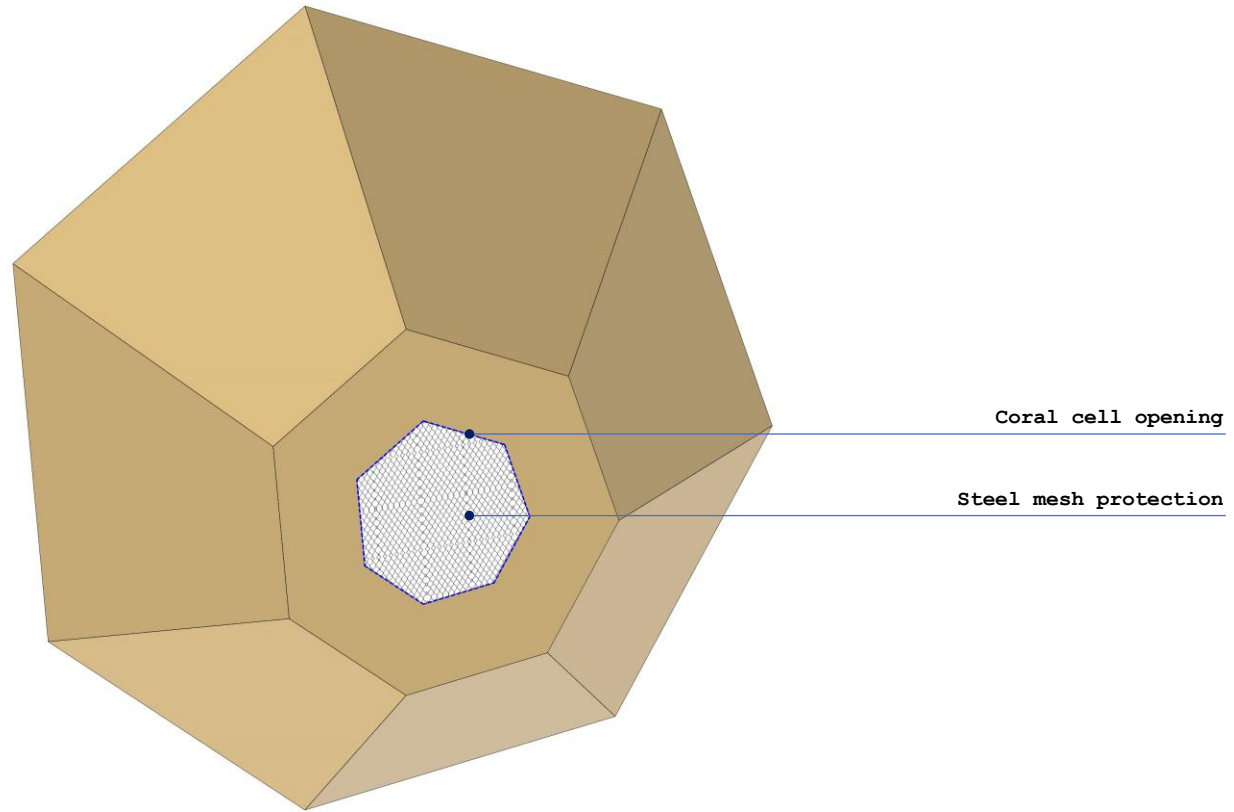
## Coral Mural



Cross Section

The mural has a short depth of 1'2" (0,4m) to reduce the overturning loads it may suffer

INTRUSION PROTECTION  
Coral Mural



Each opening in the mural's cells have a thin steel mesh inside of them that prevents the intrusion of water and small birds

ARTWORK RENDERING  
Coral Mural





**CORAL MURAL**

View from west sidewalk across Salzedo street to the sculpture - Day Time





CORAL MURAL

View from Salzedo street to the mural - Day Time

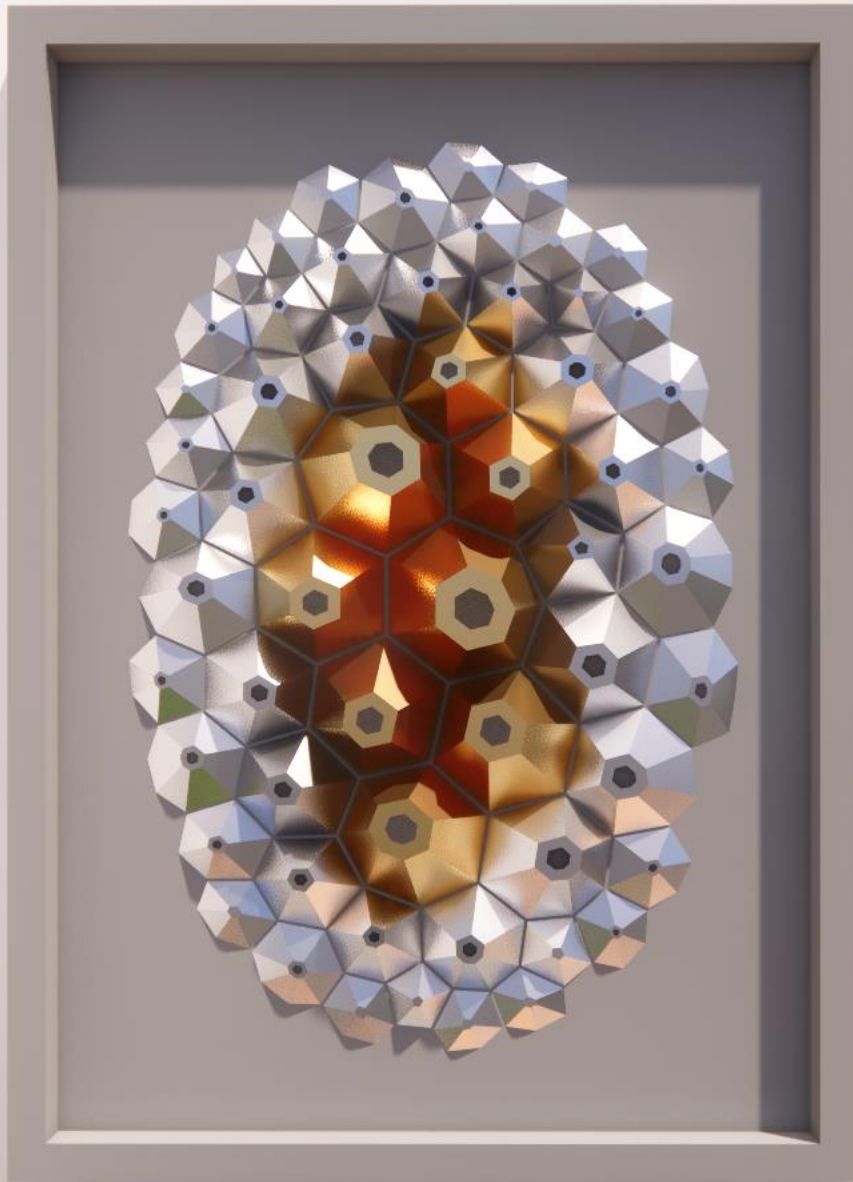




**CORAL MURAL**

View from underneath the mural - Day Time





CORAL MURAL  
Front view of the mural - Day Time



**CORAL MURAL**

Upper view from Salzedo street to the mural - Day Time





CORAL MURAL

View from west sidewalk across Salzedo street to the sculpture - Night Time





CORAL MURAL

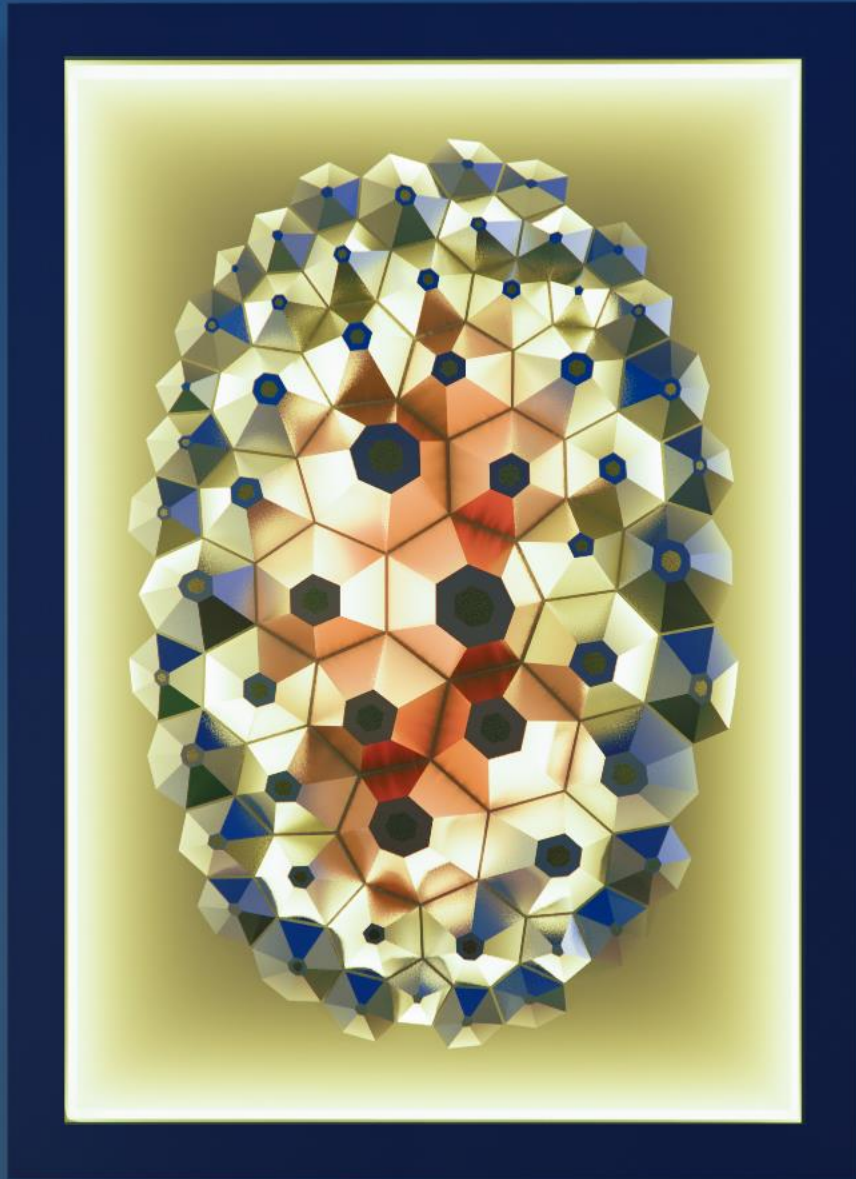
View from Salzedo street to the mural - Night Time





CORAL MURAL

View from underneath the mural - Night Time



CORAL MURAL  
Front view of the mural - Night Time





CORAL MURAL

Upper view from Salzedo street to the mural - Night Time



## TECHNICAL INFORMATION

### CORAL MURAL

#### MATERIALS

- 16ga Industrial Urethane Coated Steel (Coral)
- 11ga Industrial Urethane Coated Steel (Mounting System)

#### COATING

- Paint (Brand PPG - Product Line Matthews Paint)
- Epoxy Primer (sealing step in paint)
- Matthews Acrylic Polyurethane - Super Satin Clear (10-year warranty extension and can be reapplied to the piece without the need for disassembly)

Super Satin Specs Link:

<https://drive.google.com/drive/folders/1UsGJBxoTTKd440yIIZnG-cmEqiuJB2X?usp=sharing>



*\*All mounting material and specs to be reviewed by building Engineer during Design Development*

## TECHNICAL INFORMATION

### CORAL MURAL

#### MAINTENANCE PLAN

- Inspect and clean bi-annually
- Do not use abrasive detergents or harsh chemicals to clean surface
- Remove animal dropping or tree sap upon discovery, as they can do permanent damage
- Use mild detergent water solution utilizing a soft wash mitt or cloth followed by a thorough clean water rinse
- Dry with a damp chamois, microfiber towel, or soft cloth
- Use caution when cleaning painted surfaces with a pressure washer. DO NOT use pressure washers that exceed 1,200 psi
- Matthews Paint Maintenance and Specs boiler Link: <https://drive.google.com/drive/folders/1QUqmBnOkRYYgJfAHgNgii7nN19WQHLaI?usp=sharing>
- Graffiti Removal Guidelines Specs Link: <https://drive.google.com/drive/folders/1y-FkzQ7zYpPMk-XVeOzi9riHLvg7-hlO?usp=sharing>

*\*All mounting material and specs to be reviewed by building Engineer during Design Development*







RECONSTRUCTED NATURES:  
CORAL MURAL & SUPLE TREE SCULPTURE

RECONSTRUCTED NATURES  
Provider Ignition Arts



**Production Cost: \$496.800**  
**Lights: \$16.200**  
**Artist Fee: \$100.000**

**Total: \$613.000**

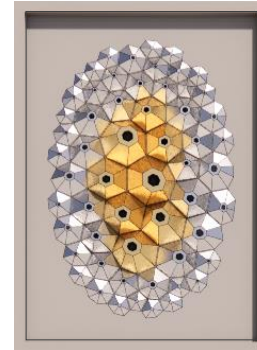
*\* This budget considers 10-year coating warranty & does not include concrete nor pavement related projects*



**Production Cost: \$80.000**  
**Artist Fee: \$10.000**

**Total: \$90.000**

*\* This budget considers 10-year coating warranty & does not include lighting nor concrete related projects*



**Reconstructed Natures**  
*gt2P for Alta Coral Gables LLC*

**great  
things  
to People.**  
creative design

web: <http://gt2p.com/>

Instagram: @gt2P