

# THE COUNTRY CLUB OF CORAL GABLES

997 NORTH GREENWAY DRIVE  
CORAL GABLES, FLORIDA

ADDITIONS & ALTERATIONS TO:

	<u>INDEX</u>
	COVER SHEET
	<u>PROPOSED</u>
01	PROPOSED SITE PLAN
02	MAIN LEVEL FLOOR SITE PLAN
02F	MAIN LEVEL FURNITURE PLAN
03	MAIN LEVEL FLOOR PLAN
04	EXTERIOR ELEVATIONS
04F	PARTIAL SOUTH EXTERIOR ELEV. - FURNITURE
L51	PROPOSED LANDSCAPE PLAN
	<u>EXISTING</u>
05	SURVEY
06	EXISTING SITE PLAN
07	EXISTING MAIN LEVEL FLOOR SITE PLAN
08	EXISTING MAIN LEVEL FLOOR PLAN
09	EXISTING SECOND LEVEL FLOOR PLAN
10	EXISTING EXTERIOR ELEVATIONS
	<u>SUPPLEMENTAL DRAWINGS</u>
11	OFF-SITE AND ON-SITE PARKING SITE PLAN
12	VALET CIRCULATION SITE PLAN

PLANS SUBMITTED SEPTEMBER 2, 2009 FOR:  
SEPTEMBER 15, 2009 FOR HISTORIC PRESERVATION BOARD,  
SEPTEMBER 16, 2009 PLANNING & ZONING BOARD AND  
SEPTEMBER 22, 2009 CITY COMMISSION

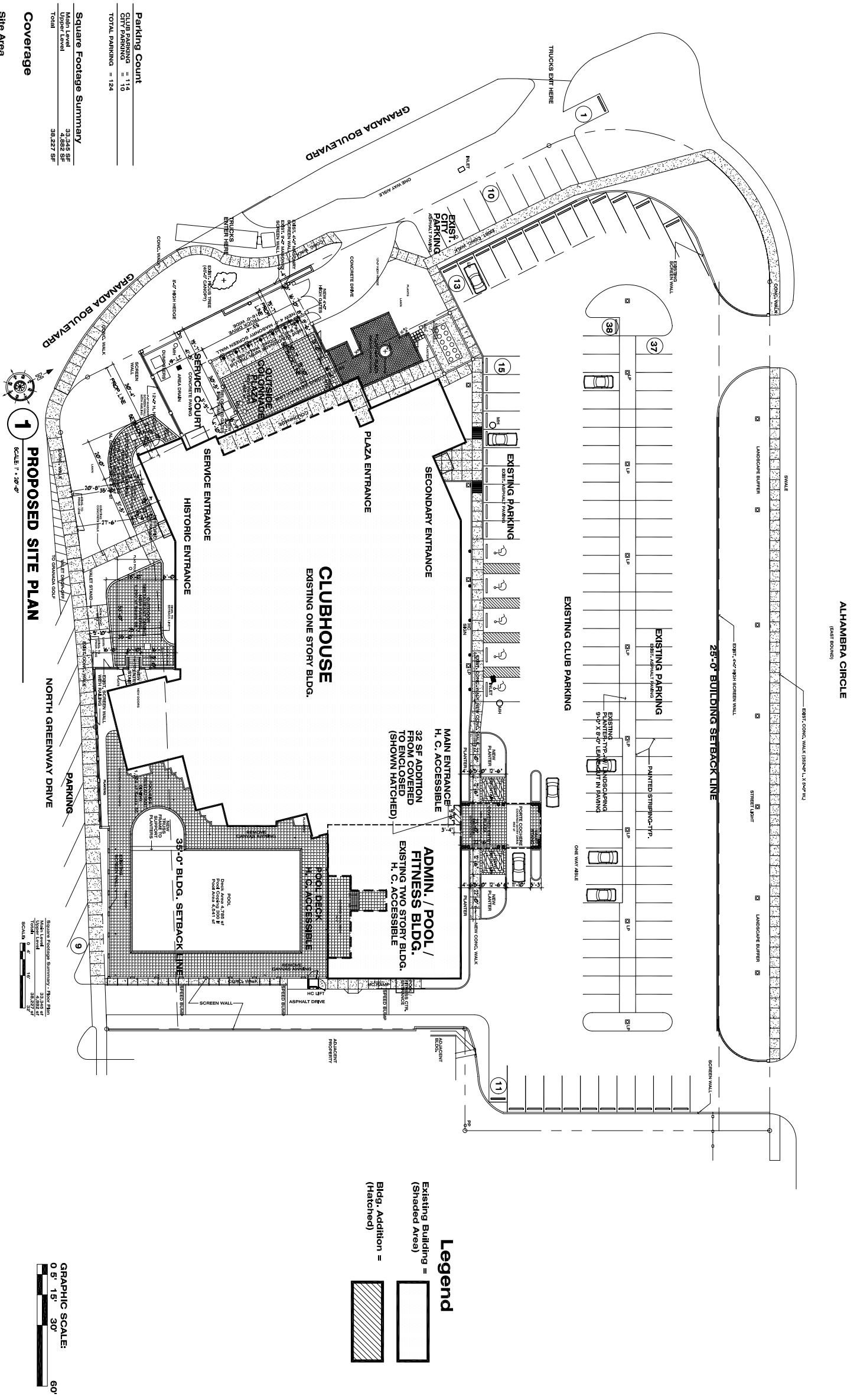
Additions and Alterations to:  
**The Country Club of Coral Gables**  
Coral Gables, Florida

August 31, 2009

**Cover Sheet**

1530 W. AIRPORT FREEMAN  
IRVING, TEXAS 75062  
TEL: (972) 253-3383  
FAX: (972) 253-3383  
WWW.CCCLUBDESIGN.COM

**CCI**  
*CLUB DESIGN THAT WORKS*  
ARCHITECTURE  
INTERIOR DESIGN  
MASTER PLANNING  
FOOD SERVICE PLANNING



**Parking Count**

EXIST. CITY PARKING	= 116
EXIST. CLUB PARKING	= 10
<b>TOTAL PARKING</b>	<b>= 124</b>

**Square Footage Summary**

Main Level	33,345 SF
Multi Level	38,227 SF
<b>TOTAL</b>	<b>71,572 SF</b>

**Coverage**

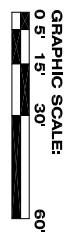
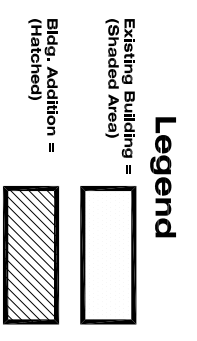
**Site Area**  
139,797.67 SF  
3,297.74 SQ YD

**Building Area (w/ New Addition)**  
Footprint = 33,345 SF  
Coverage = 53,816 Percent

**Landscape Open Space Provided**  
24,982 SF  
24,982 SF divided by 139,797.67 SF = 17.87% Coverage

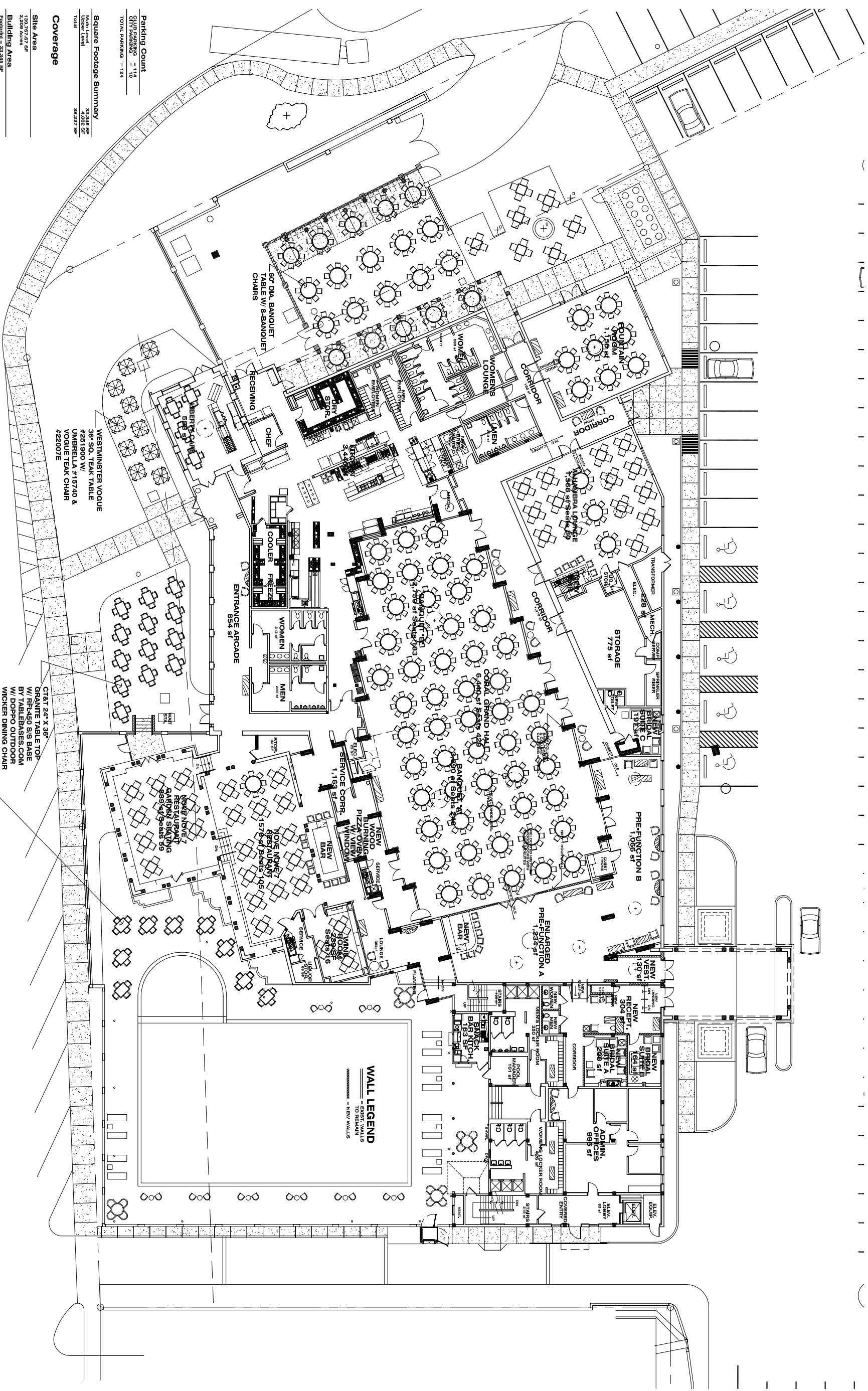
**PROPOSED SITE PLAN**  
SCALE: 1" = 20'-0"

Square Footage Summary - New Plan  
TOTAL AREA = 71,572 SF  
TOTAL AREA = 3,297.74 SQ YD  
SCALE: 1" = 20'-0"









**Parking Count**  
 CLUB PARKING = 114  
 CITY PARKING = 10  
 TOTAL PARKING = 124

**Square Footage Summary**  
 Multi Level = 33,348 SF  
 Single Level = 24,985 SF  
 Total = 58,333 SF

**Coverage**  
 Site Area = 138,767.67 SF  
 3,209 Acres  
 Building Area = 33,348 SF  
 Coverage = 23.98 Percent

**Landscape Open Space Provided**  
 104,419 SF  
 24,985 SF divided by 138,767.67 SF = 17.97% Coverage

**1**

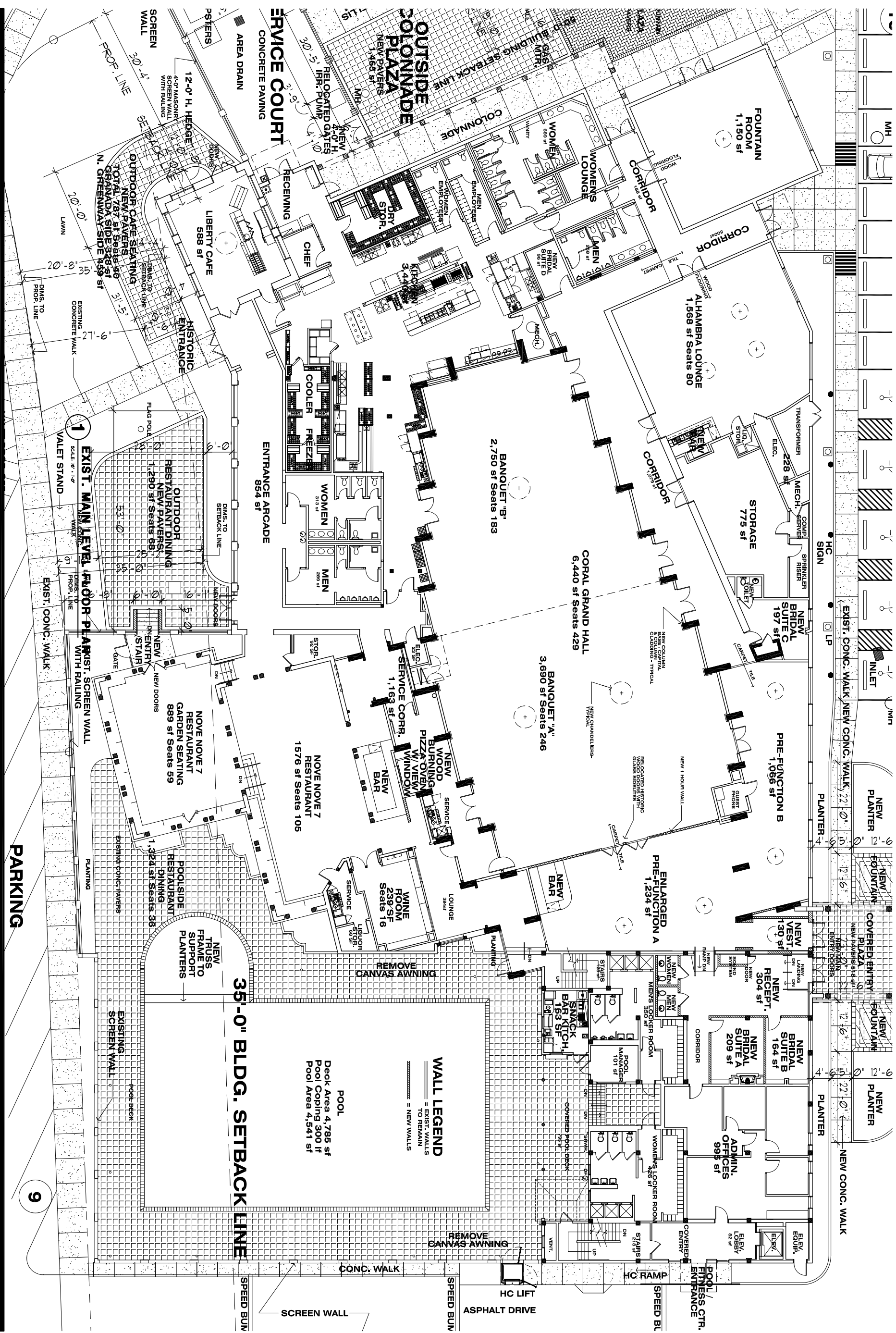
**PROPOSED MAIN LEVEL FURNITURE PLAN**  
 SCALE: 3/32" = 1'-0"

**WALL LEGEND**  
 - TO REMAIN  
 - NEW WALLS

CT&T 24' X 38'  
 GRANITE TABLE TOP  
 W/ RH-450 S/S BASE  
 BY TABLEBASES.COM  
 W/ DOPPO OUTDOOR  
 WICKER DINING CHAIR  
 #GK1910

WESTMINSTER VOQUE  
 36" SQ. TEAK TABLE  
 #251900 W/  
 UMBRELLA #15740 &  
 VOQUE TEAK CHAIR  
 #22007E





**CCI**  
 ARCHITECTURE  
 INTERIOR DESIGN  
 MASTER PLANNING  
 FOOD SERVICE PLANNING

1520 W. AIRPORT FREEWAY SUITE 200  
 IRVING, TEXAS 75062  
 TEL: (972) 253-5383  
 FAX: (972) 253-5383  
 WWW.CCIBUILDDESIGN.COM

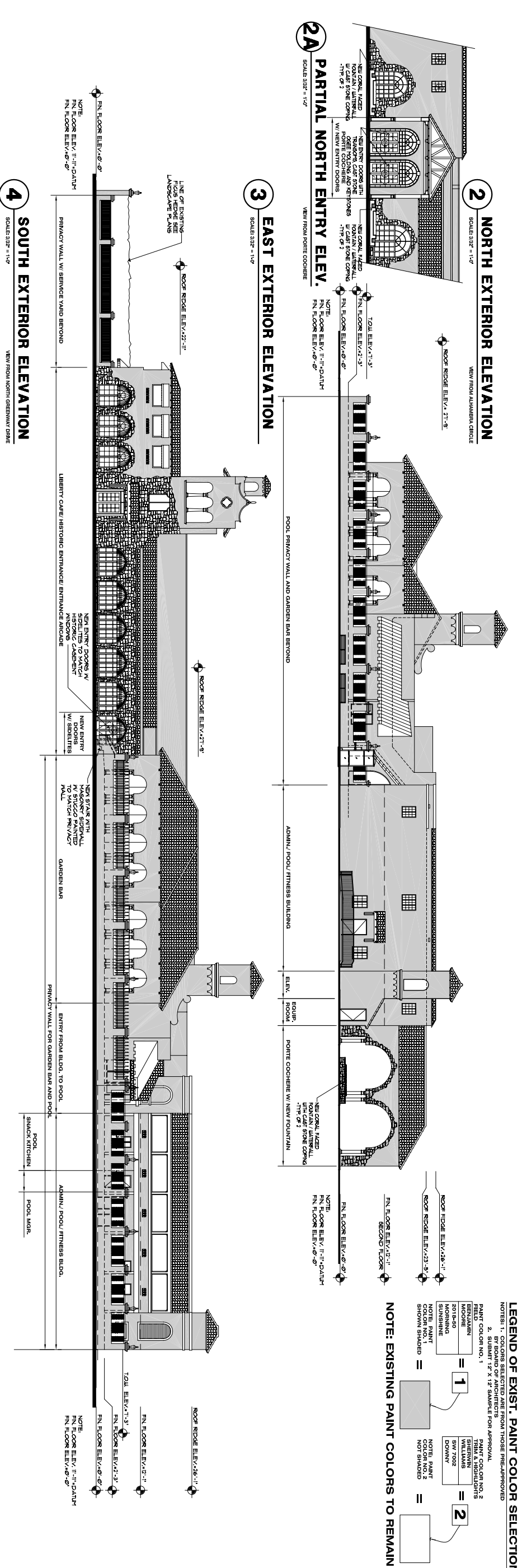
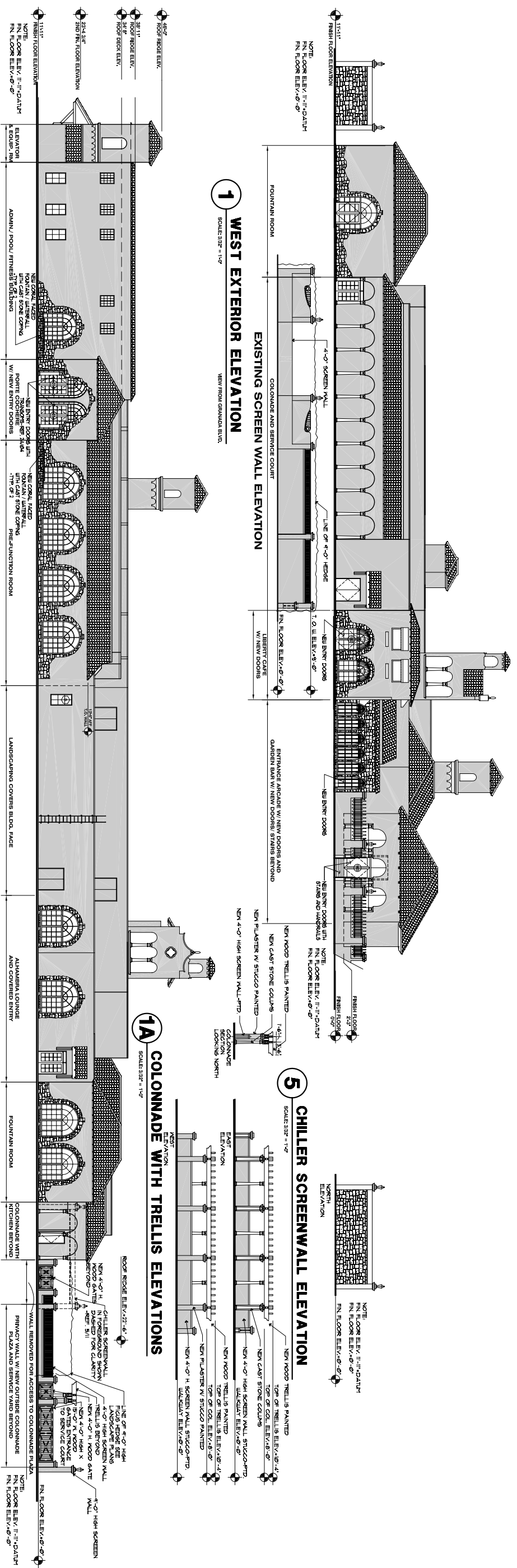
Scale 1/8" = 1'-0"

# Scheme A Proposed Main Level Floor Plan

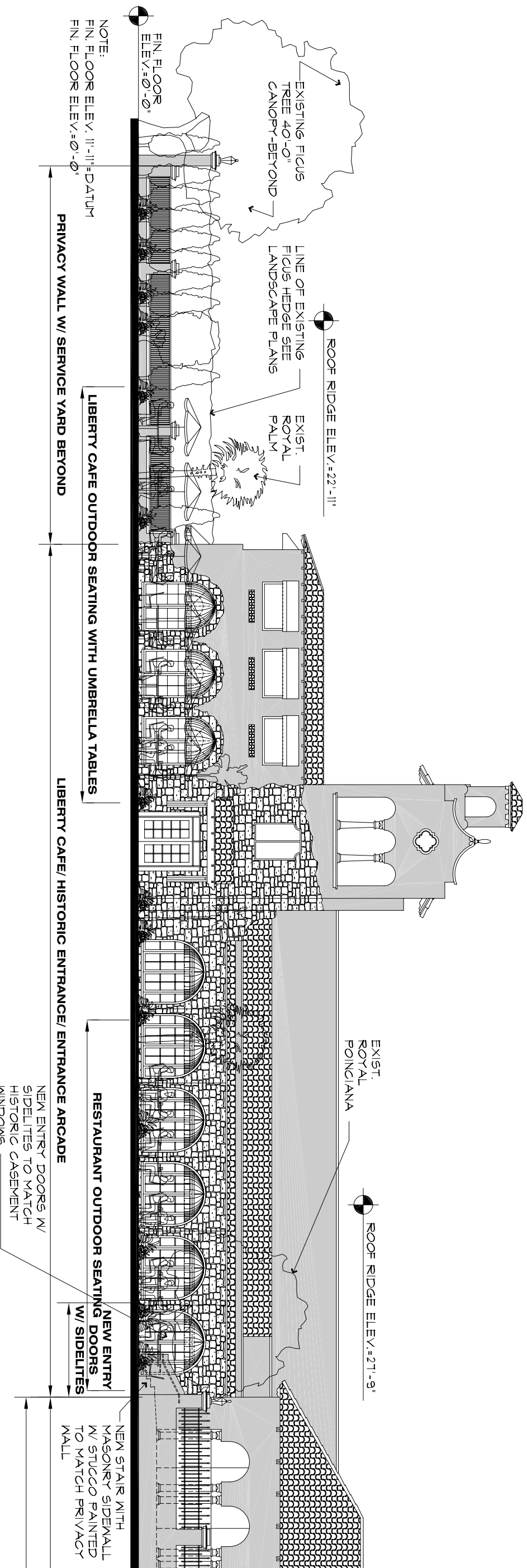
August 31, 2009

Additions and Alterations to:  
**The Country Club of Coral Gables**  
 Coral Gables, Florida

Dwg. No. **03**







**4 PARTIAL SOUTH EXTERIOR ELEV. - FURNITURE**

VIEW FROM NORTH GREENWAY DRIVE



RECTANGULAR POTS BY  
OLD TOWN FIBERGLASS  
AND SPECIFICATIONS)

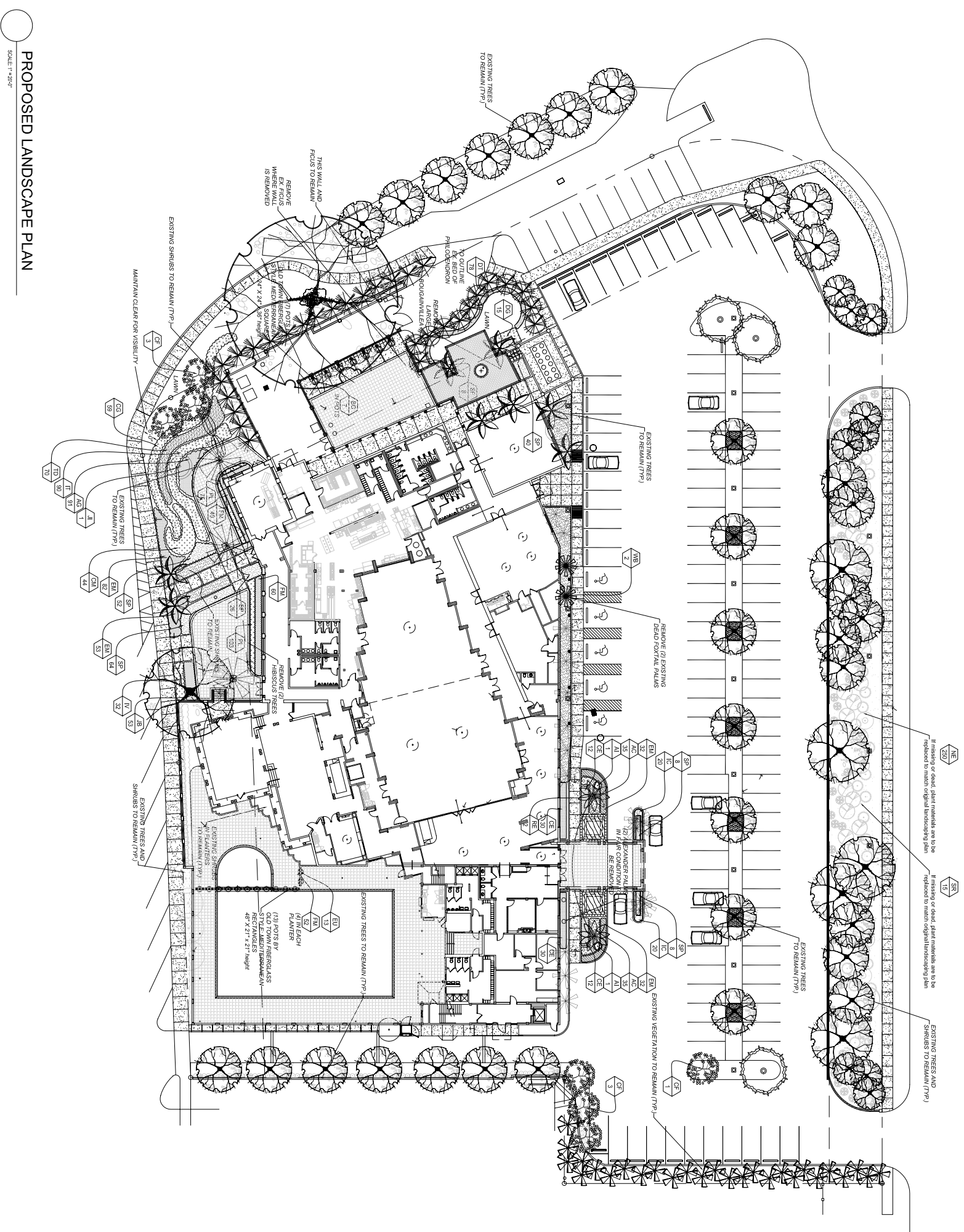


SQUARE POTS BY  
OLD TOWN FIBERGLASS  
AND SPECIFICATIONS)



**LANDSCAPE LIST**

QUANTITY	KEY	BOTANICAL COMMON NAME	DESCRIPTION
70	AC	Abutilon cathartica Mandrill Flower	18" H. X 18" SPR. 3 GAL.
91	AG	Maranta glabra ORNBURNIAL PENULT	12" H. X 12" SPR. 1 GAL. 15 O.Z.
2	AI	Abutilon lineare RED IMPERIAL BROWNELEAF	30" H. X 30" SPR. 14" POT
7	BG	Bougainvillea PINK BOUGAINVILLEA	3' TRELLIS 3 GAL.
84	CE	Coccoloba aculea GREEN BUTTOWOOD	24" H. X 24" SPR. 3 GAL.
7	CF	Castela leuhalia GOLDEN SHOWER TREE	12" H. X 5" SPR. 1.5 GAL.
59	CG	Quasi gartiera SMALL LEAF CLUSIA	36" H. X 24" SPR. 7 GAL.
44	CM	Carlisa macrocarpa DWARF NATAL PLUM	24" H. X 24" SPR. 3 GAL.
15	DG	Quercus macrocarpa BRIGHT GREEN DEW DROP	18" H. X 18" SPR. 3 GAL.
78	DT	Variegata VARIEGATED FLAX LILY	1 gallon full
199	EM	Euphorbia nifida DWARF CROWN OF THORNS	18" H. X 18" SPR. 3 GAL.
13	EU	Eugenia sp. CONE TOP BAY	4' O. A. H. 3 GAL. ONE
152	FM	Ficus microcarpa Green Island GREEN ISLAND FIGS	18" H. X 18" SPR. 3 GAL.
40	IC	Mangifera indica BRIGHT GREEN SWEET POTATO	1 gallon full
90	IT	Ipomoea pes-caprae DWARF MARIANNA	18" H. X 18" SPR. 3 GAL.
32	IV	Ilex verticillata DWARF MAJORAN HOLLY	15" H. X 15" SPR. 3 GAL.
53	JB	Jasminum tomentosum SHRIMP PLANT	18" H. X 18" SPR. 3 GAL.
1	JL	Jatropha integrifolia FERECRINA	6' O. A. H. 20 GAL.
250	NE	Nepenthes aculeata BOSTON FERN	24" H. X 24" SPR. 3 GAL.
178	PL	Panicum heterodon DWARF PENTAS	1 gallon full
2	RE	Roystonia alata ROYAL PALM	8' GW, 22' O.A. F.G.
206	SP	Spathoglottis platana GROUND ORCHIDS	18" H. X 18" SPR. 3 GAL.
15	SR	Serenoa repens SAW PALMETTO	24" H. X 24" SPR. 3 GAL.
70	TD	Thapsacum fendana DWARF PANDANUS TREE GRASS	30" H. X 24" SPR. 3 GAL.
2	WB	Wickstroemia FOXTAIL PALM	18" H. O.A. F.G.
AS REQ'D	LAWN	Semiotheca secundatum ST. AUGUSTINE GRASS	Same Even Sed

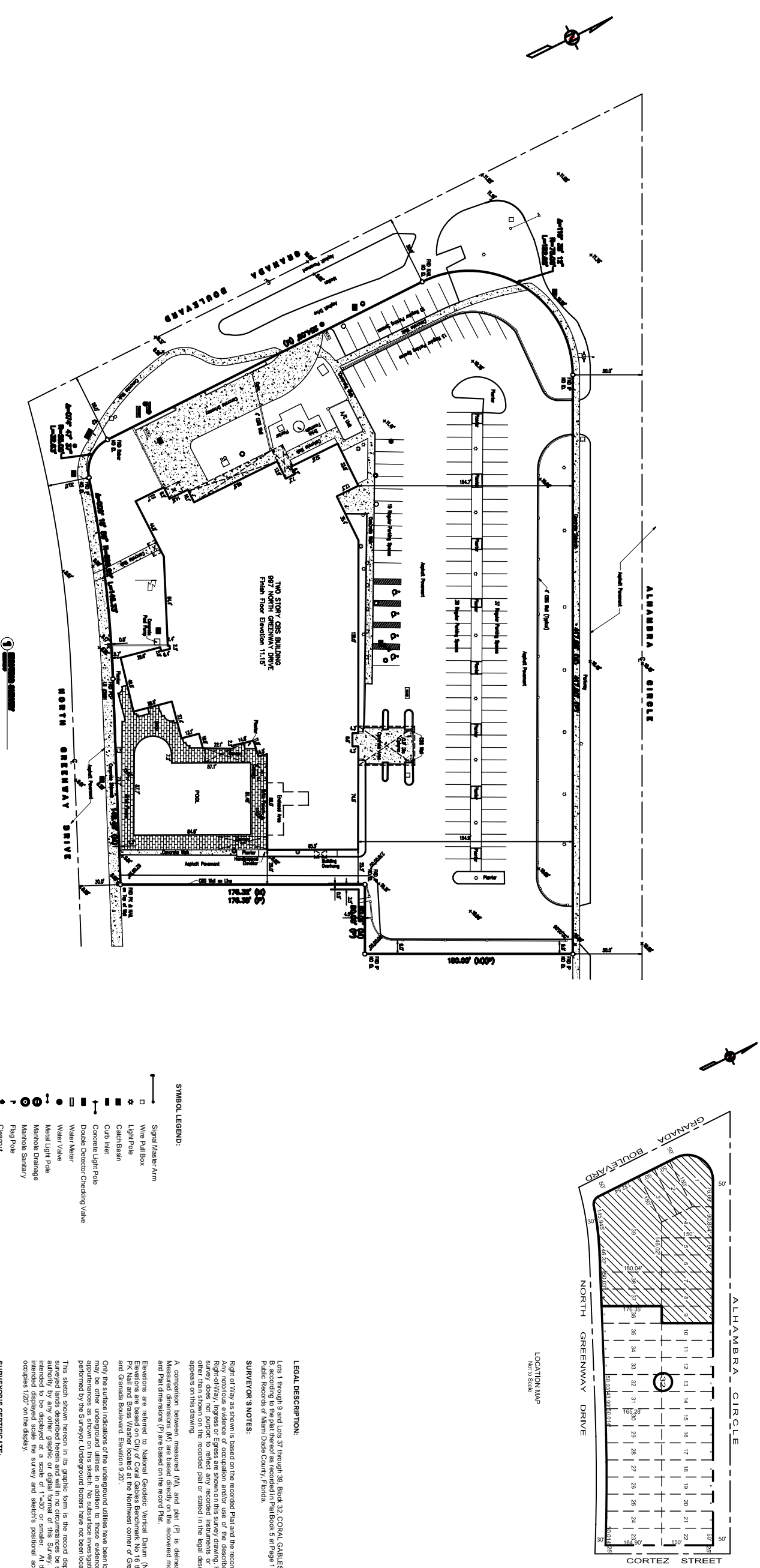


**PROPOSED LANDSCAPE PLAN**

SCALE: 1" = 20'-0"

**Scheme A**  
**Proposed Landscape Plan**

# SKETCH OF BOUNDARY SURVEY



### SYMBOL LEGEND:

- Signal Mast/Arm
  - Wire Pull Box
  - ☆ Light Pole
  - Catch Basin
  - Catch Inlet
  - Concrete Light Pole
  - Double Detector/Checking Valve
  - Water Meter
  - Water Valve
  - Metal Light Pole
  - Manhole Drainage
  - Manhole Sanitary
  - Flag Pole
  - Cleanout
  - Single Sign Support
  - Mail Box
- LEGEND:**
- FND Found
  - FP Iron Pipe
  - SS Concrete Block Structure
  - OC Concrete
  - DI Measure Distance
  - (M) Measure Distance
  - (P) Peg Distance
  - Length Distance
  - Delta Angle
  - Centerline
  - Permanent Control Point

### LEGAL DESCRIPTION:

Lots 1 through 9 and Lots 37 through 38, Block 32, CORAL GABLES SECTION B, according to the plat thereof as recorded in Plat Book 5 at Page 111 of the Public Records of Miami Dade County, Florida.

### SURVEYOR'S NOTES:

Right of Way as shown is based on the recorded Plat and the record description. Any previous evidence of occupation and/or use of the described parcel for any purpose other than that shown on the record plat or stated in the legal description does not purport to reflect any recorded instruments or Right-of-Way other than shown on the recorded plat or stated in the legal description, as it appears on this drawing.

A comparison between measured (M), and plat (P) is delineated hereon. Measured dimensions (M) are based directly on the recovered monumentation and Plat dimensions (P) are based on the record Plat.

Elevations are referred to Vertical Geoid (NGVD 1929). Elevation of Vertical Geoid (NGVD 1929) is 10.00 feet above Mean Sea Level. The elevations of PK Nail and Bass Washer located at the Northwest corner of Greenway Drive and Granada Boulevard, Elevation 8.20'.

Only the surface indications of the underground utilities have been located. There may be other underground utilities in addition to those indicated by visible apertures as shown on this sketch. No subsurface investigation has been performed by the Surveyor. Underground borders have not been located.

This sketch shows hereon in the graphic form is the record depiction of the surveyed lands described herein and will in no circumstance be stipulated in authority by any other graphic or digital format of this Survey. This map is intended to be displayed at a scale of 1"=30' or smaller. At the maximum intended displayed scale the survey and sketch's positional accuracy value occupies 1/20" on the display.

### SURVEYOR'S CERTIFICATE:

This is to certify to the herein named firm and/or persons that the 'BOUNDARY SURVEY' was conducted in accordance with the Florida Statutes, Chapter 47, Florida Statutes, and the Florida Board of Professional Surveyors and Mappers pursuant to Chapter 47Z027, Florida Statutes.

E. R. BROWNELL & ASSOCIATES, INC.

*Thomas Brownell*  
 Thomas Brownell  
 Executive Vice President  
 Florida Board of Professional Surveyors and Mappers  
 State of Florida  
 Surveyor #2981

Revised to show additional information on July 28, 2009

**ER. Brownell & Associates, Inc.**  
 CONSULTING ENGINEERS  
 2454 SW 28th LANE  
 305-460-3888

LAND PLANNERS  
 WWW.BROWNELL.COM  
 Certification No. L7781

SURVEYORS & MAPPERS  
 Miami, Florida, 33135  
 305-460-3870 (VAX)

**CCCI**  
 ARCHITECTURE  
 INTERIOR DESIGN  
 MASTER PLANNING  
 FOOD SERVICE PLANNING

CLUB DESIGN THAT WORKS

1520 W. AIRPORT FREEWAY  
 SUITE 200  
 IRVING, TEXAS 75062  
 TEL: (972) 253-4383  
 FAX: (972) 253-5883  
 WWW.CCCLUBDESIGN.COM

Scale 1" = 30'-0"

## Existing Survey

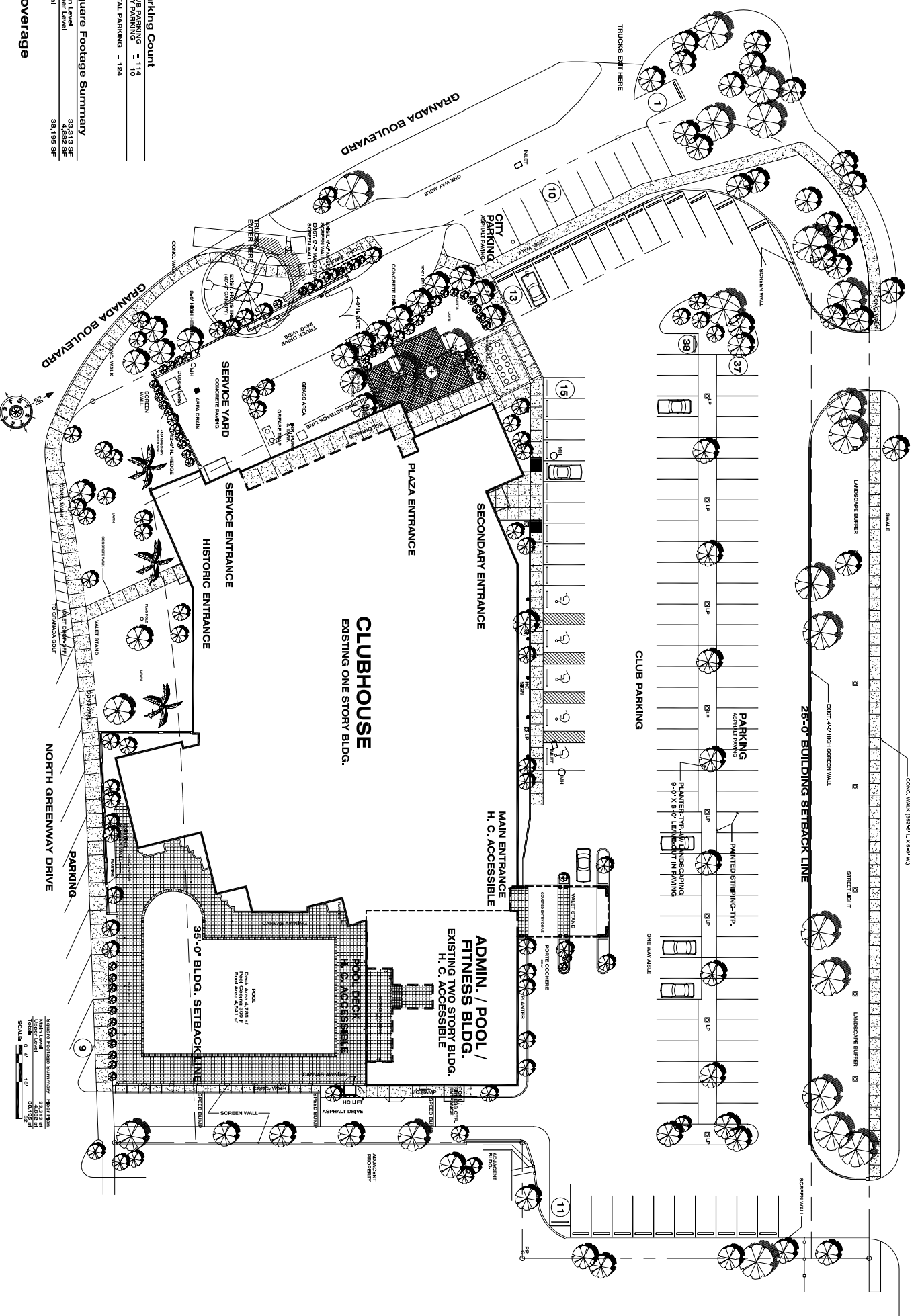
July 28, 2009

## Additions and Alterations to The Country Club of Coral Gables Coral Gables, Florida

Dwg. No. 05



ALHAMBRA CIRCLE  
(NOT SHOWN)



**Parking Count**

CITY PARKING	= 114
CLUB PARKING	= 124
<b>TOTAL PARKING</b>	<b>= 238</b>

**Square Footage Summary**

Main Level	33,313 SF
Multi Level	38,195 SF
<b>TOTAL</b>	<b>71,508 SF</b>

**Coverage**

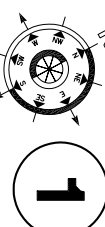
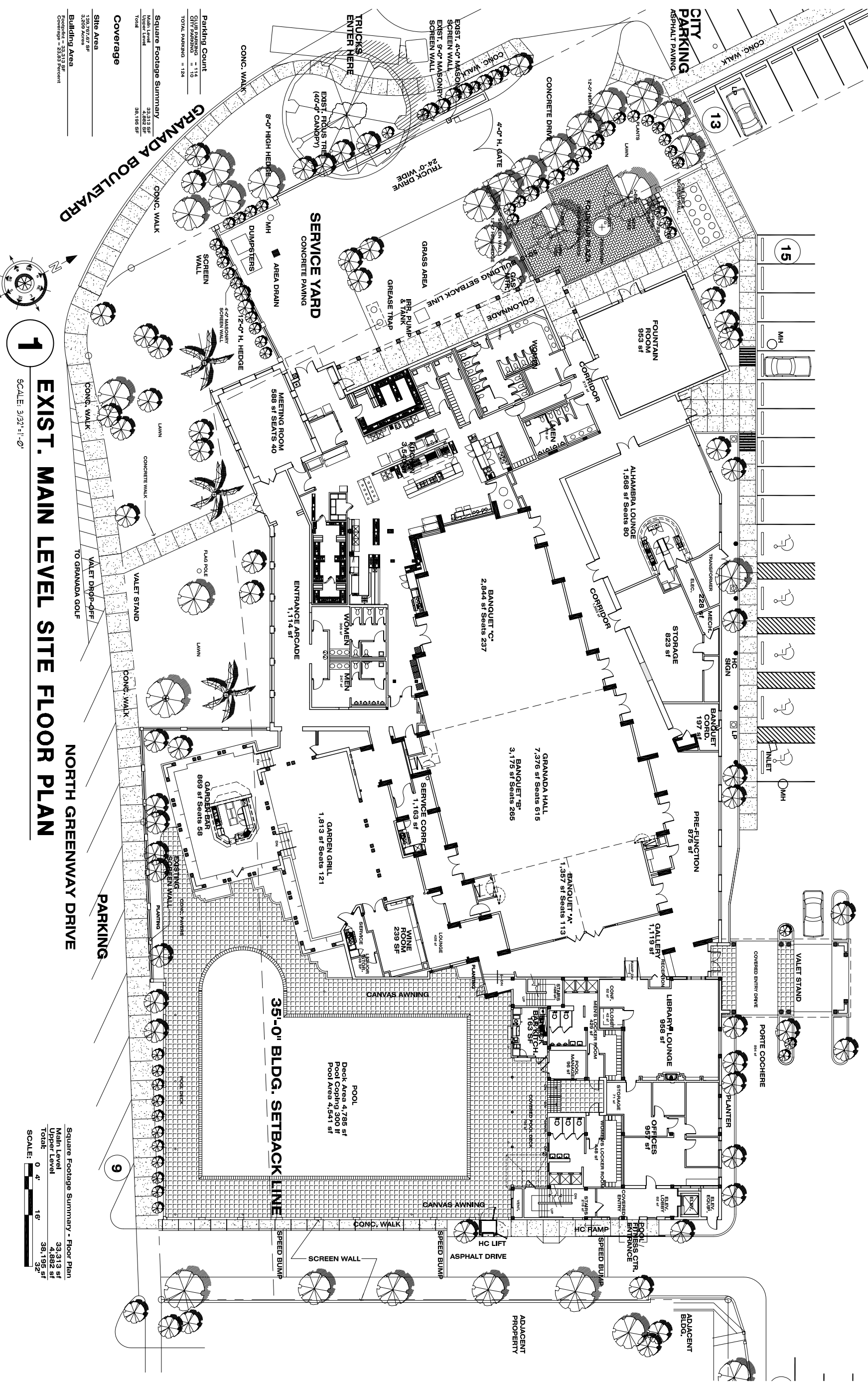
<b>Site Area</b>	<b>139,797,687 SF</b>
Building Area	71,508 SF
<b>Footprint = 33,313 SF</b>	<b>Coverage = 23.82 Percent</b>

**1 EXISTING SITE PLAN**  
SCALE: 1" = 20'-0"



CLUB PARKING

ONE WAY AISLE



**1**

SCALE: 3/32" = 1'-0"

**EXIST. MAIN LEVEL SITE FLOOR PLAN**

Square Footage Summary - Floor Plan

Main Level	33,313 sf
Upper Level	4,582 sf
<b>Total</b>	<b>38,195 sf</b>

SCALE: 0' 4" = 16' = 32'

Parking Count

CITY PARKING	= 114
CITY PARKING	= 10
<b>TOTAL PARKING</b>	<b>= 124</b>

Square Footage Summary

Main Level	33,313 sf
Upper Level	4,582 sf
<b>Total</b>	<b>38,195 sf</b>

Coverage

Site Area	138,757.67 sf
3,209 Acres	

Building Area

Footprint	= 33,313 sf
Coverage	= 23.83 Percent

**CC1** CLUB DESIGN THAT WORKS

ARCHITECTURE  
INTERIOR DESIGN  
MASTER PLANNING  
FOOD SERVICE PLANNING

1520 W. AIRPORT FREEWAY, SUITE 200  
IRVING, TEXAS 75062  
TEL. (972) 253-5383  
FAX. (972) 253-5383  
WWW.CC1DESIGN.COM

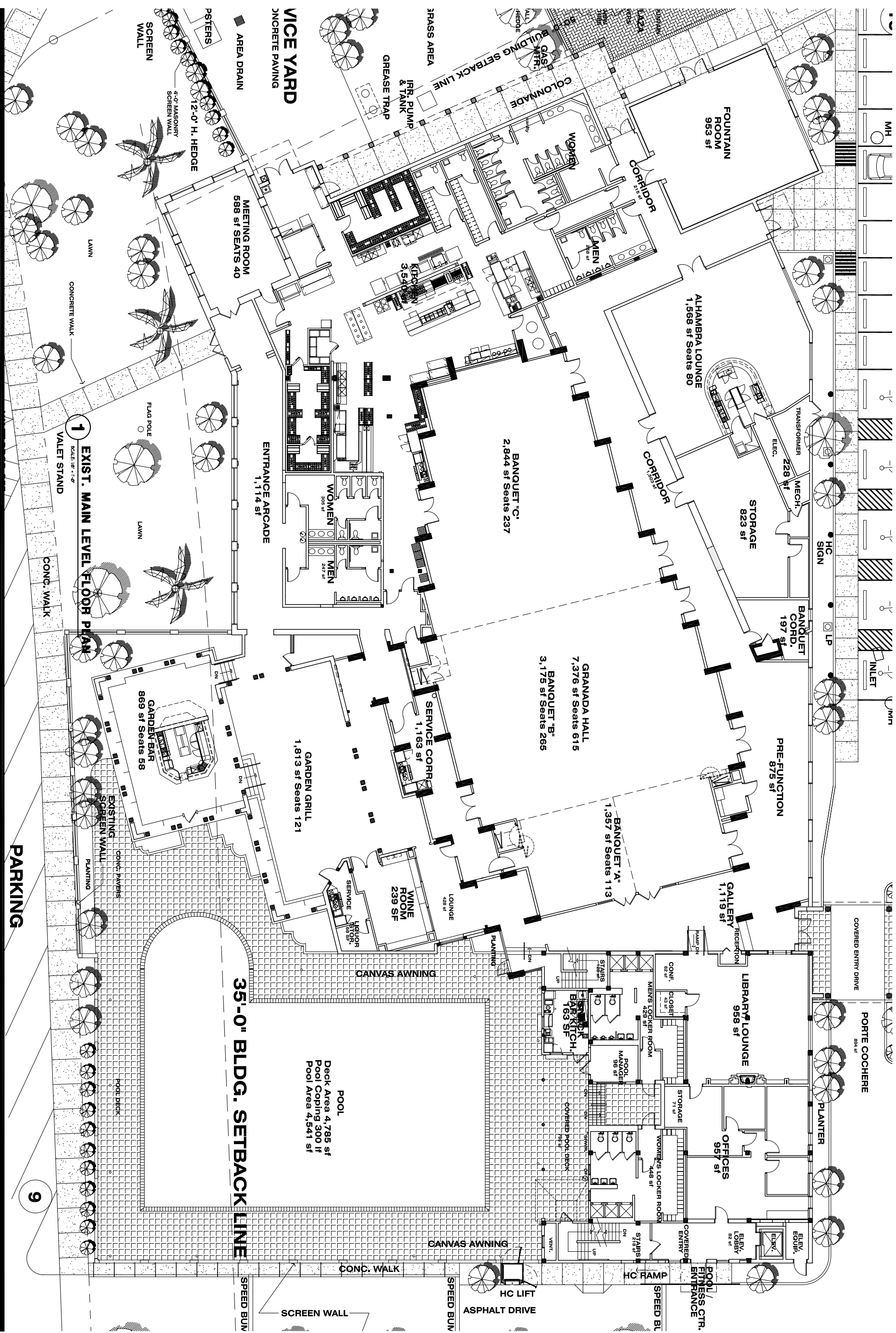
**Existing Main Level Floor Site Plan**

August 31, 2009

**Additions and Alterations to: The Country Club of Coral Gables**

Coral Gables, Florida

Dwg. No. 07



**CCI**  
 ARCHITECTURE  
 INTERIOR DESIGN  
 MASTER PLANNING  
 FOOD SERVICE PLANNING

1520 W. AIRPORT FREEWAY SUITE 200  
 IRVING, TEXAS 75062  
 TEL: (972) 253-5383  
 FAX: (972) 253-5383  
 WWW.CCIBUILDING.COM

CLUB DESIGN THAT WORKS  
 SCALE: 1/8" = 1'-0"

# Existing Main Level Floor Plan

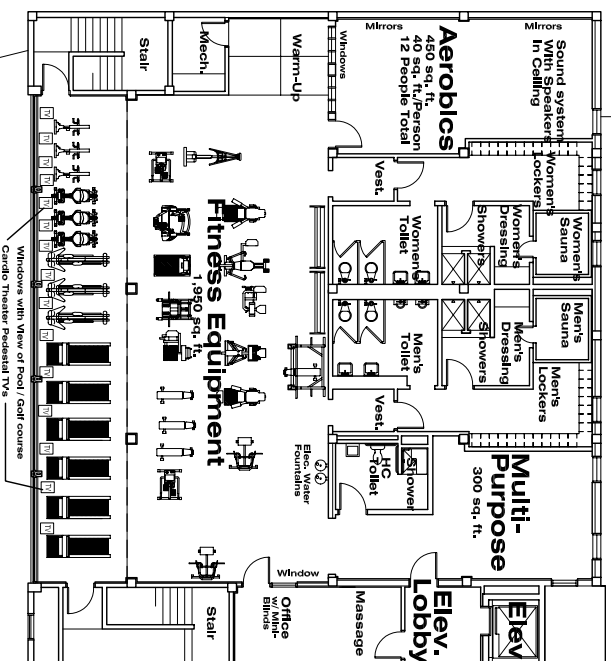
August 31, 2009

Additions and Alterations to:  
**The Country Club of Coral Gables**  
 Coral Gables, Florida

Dwg. No. **08**

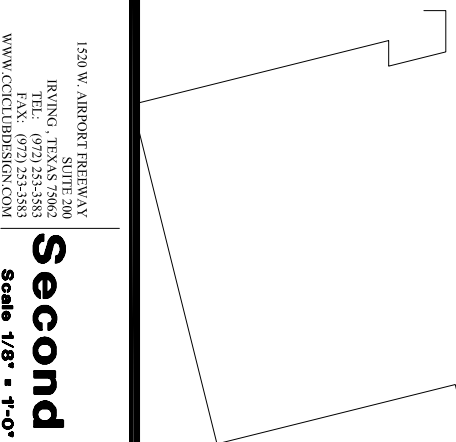


Roof Below



**1** Exist. Second Level Floor Plan - Fitness Center  
 SCALE: 1/8" = 1'-0"

Second Level Square Footage 4,882 SF  
 SCALE: 0 4' 16' 32'



CLUB DESIGN THAT WORKS  
 ARCHITECTURE  
 INTERIOR DESIGN  
 MASTER PLANNING  
 FOOD SERVICE PLANNING

1520 W. AIRPORT FREEWAY  
 IRVING, TEXAS 75062  
 TEL: (972) 253-3583  
 FAX: (972) 253-3583  
 WWW.CCLUBDESIGN.COM

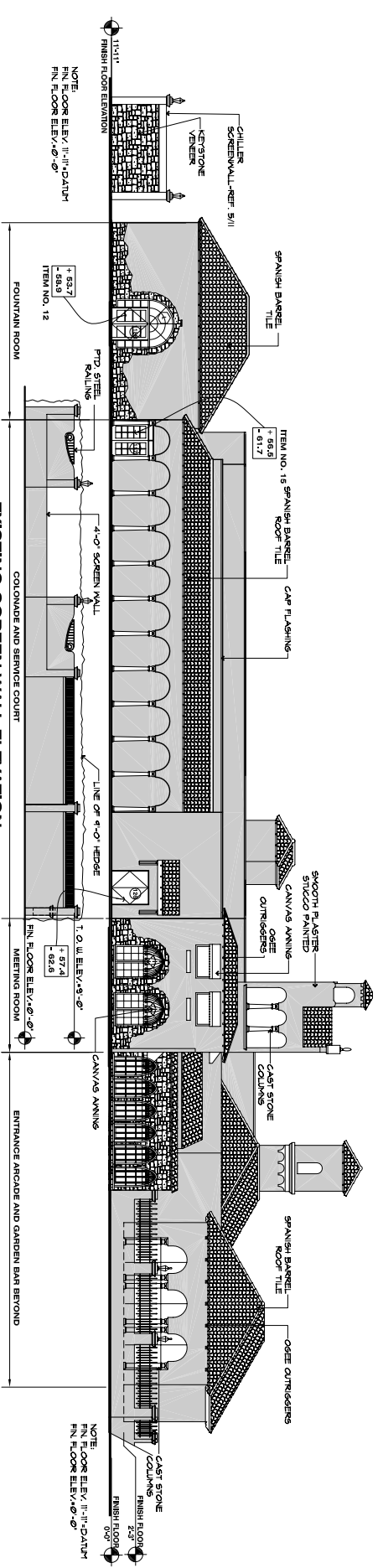
**Existing**  
**Second Level Floor Plan - Fitness Center**  
 Scale 1/8" = 1'-0"

Additions and Alterations to:  
**The Country Club of Coral Gables**  
 Coral Gables, Florida

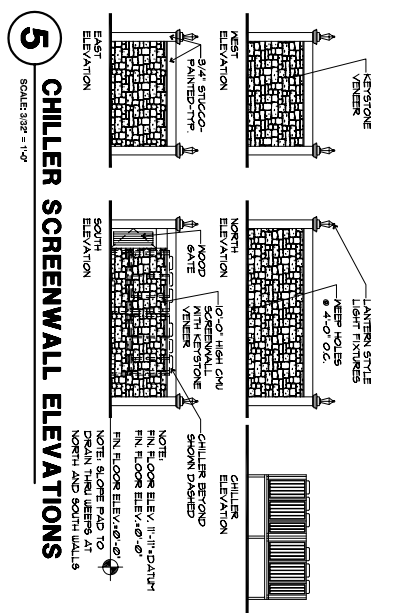
Dwg. No.  
**09**

August 31, 2009

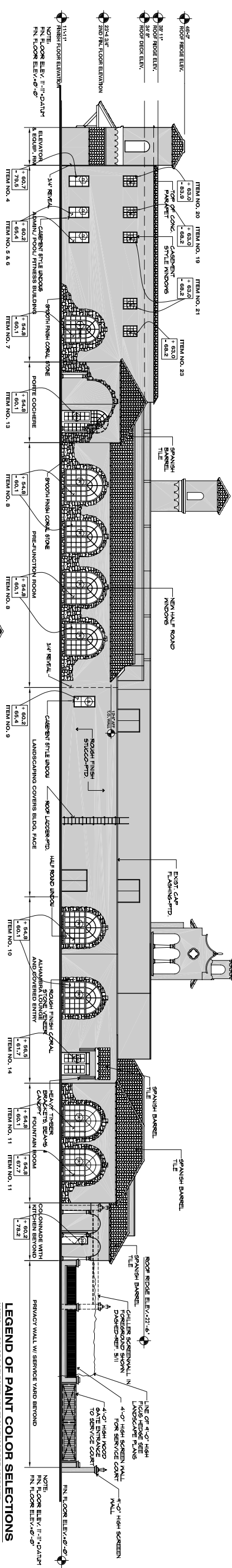




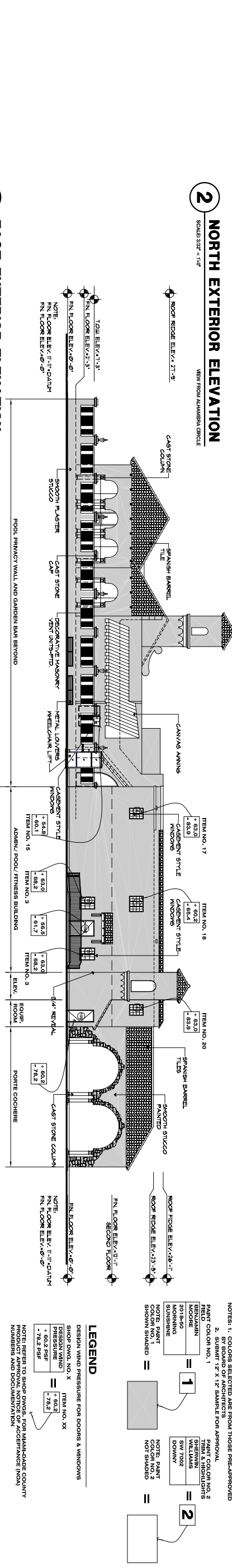
**1 WEST EXTERIOR ELEVATION**  
SCALE: 3/32" = 1'-0"  
VIEW FROM GRANADA BLVD.



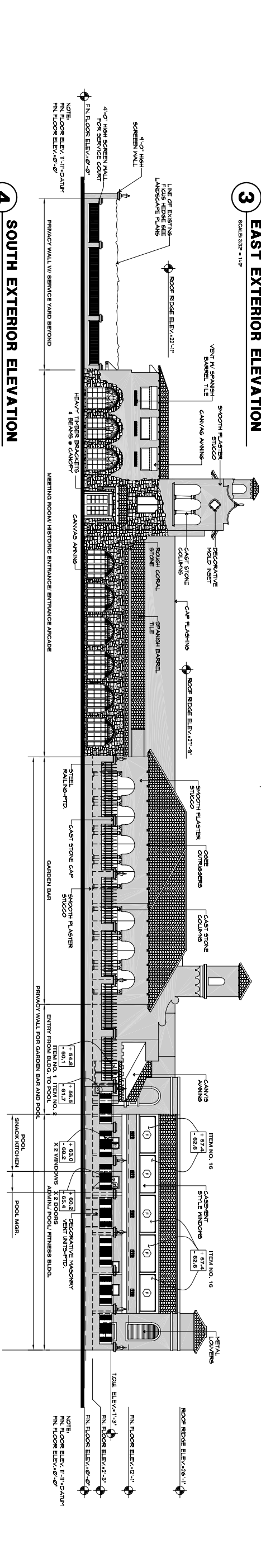
**5 CHILLER SCREENWALL ELEVATIONS**  
SCALE: 3/32" = 1'-0"



**2 NORTH EXTERIOR ELEVATION**  
SCALE: 3/32" = 1'-0"  
VIEW FROM ALHAMBRA CIRCLE



**3 EAST EXTERIOR ELEVATION**  
SCALE: 3/32" = 1'-0"



**4 SOUTH EXTERIOR ELEVATION**  
SCALE: 3/32" = 1'-0"  
VIEW FROM NORTH GREENWAY DRIVE

**LEGEND OF PAINT COLOR SELECTIONS**

NOTES: 1. COLORS SELECTED ARE FROM THOSE PRE-APPROVED BY BOARD OF ARCHITECTS  
2. SUBMIT 12 X 12" SAMPLE FOR APPROVAL

PAINT COLOR NO. 1	PAINT COLOR NO. 2
BENJAMIN MOORE SUNSHINE	PAINT COLOR NO. 1 SHERWIN WILLIAMS SW702 SUNSHINE
BENJAMIN MOORE SUNSHINE	PAINT COLOR NO. 2 SHERWIN WILLIAMS SW702 SUNSHINE

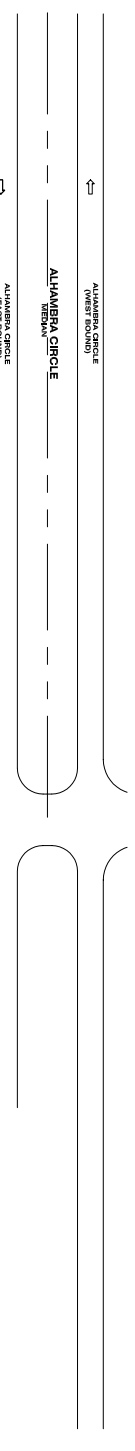
NOTE: PAINT COLOR NO. 1 NOT SHOWN  
NOTE: PAINT COLOR NO. 2 NOT SHOWN

**LEGEND**

DESIGN WIND PRESSURE FOR DOORS & WINDOWS  
SHO. DWG. NO. X ITEM NO. XX

DRISBURY WIND	ITEM NO. XX
+ 60.2 PSF	
+ 60.2 PSF	
+ 78.2 PSF	

NOTE: REFER TO SHOP DRAWINGS FOR MANUFACTURE COUNTY NUMBERS AND DOCUMENTATION



**Parking Count**

<b>Parking Spaces</b>	
Club Parking (On-Site)	114
City Parking (On-Site)	10
Spaces Off Site	110
<b>Total Parking Spaces</b>	<b>234</b>

**Legend**

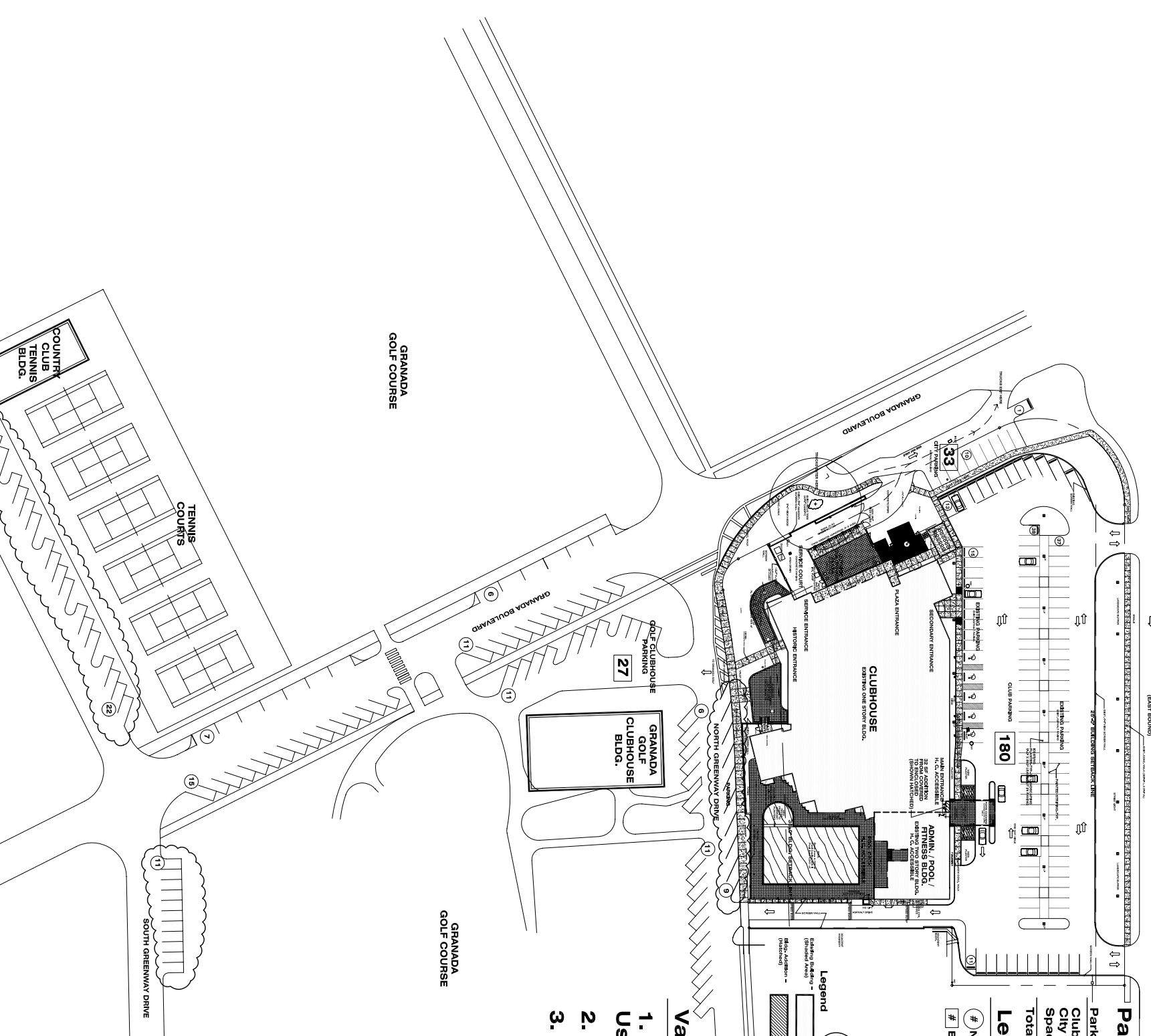
- # Number of Parking Spaces
- # Est. Parking Capacity w/ Valet Parking

**1 SITE PLAN - OFF-SITE & ON-SITE PARKING**

SCALE: 1"=40'-0"  
 GRAPHIC SCALE  
 NORTH

**Valet Parking Notes**

1. Areas Prohibited for the Use of Valet Parking Shown Clouded =
2. First Priority Use North Main Club Parking Lot
3. Total Estimated Valet Parking Spaces = **240**



**CCI**  
 ARCHITECTURE  
 INTERIOR DESIGN  
 MASTER PLANNING  
 FOOD SERVICE PLANNING

1520 W. AIRPORT FREEWAY SUITE 200  
 IRVING, TEXAS 75062  
 TEL: (972) 253-5383  
 FAX: (972) 253-5383  
 WWW.CCIBUILDDESIGN.COM

**Off-Site & On-Site Parking Site Plan**

Scale: 1" = 40'-0"  
 August 31, 2009

Additional and Alterations to:  
**The Country Club of Coral Gables**  
 Coral Gables, Florida

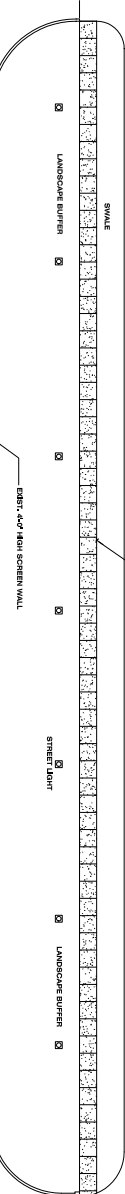
Dwg. No.  
**11**



ALHAMBRA CIRCLE  
MEDIAN

ALHAMBRA CIRCLE  
(EAST BOUND)

CONC. WALK, 18" x 8" x 6" W/



# Parking Count

Parking Spaces	
Club Parking (On-Site)	114
City Parking (On-Site)	10
Spaces Off Site	110
<b>Total Parking Spaces</b>	<b>234</b>

## Legend

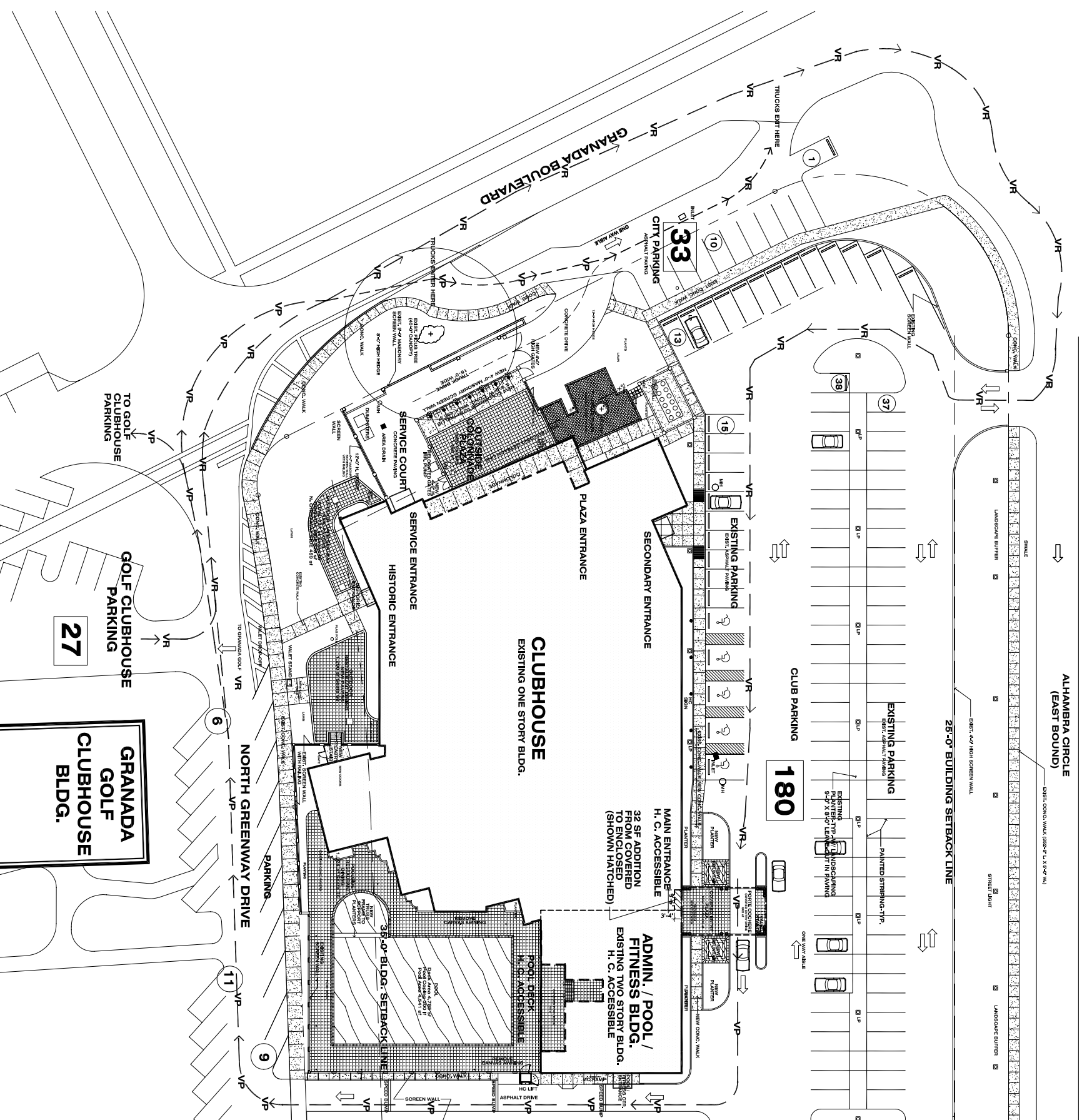
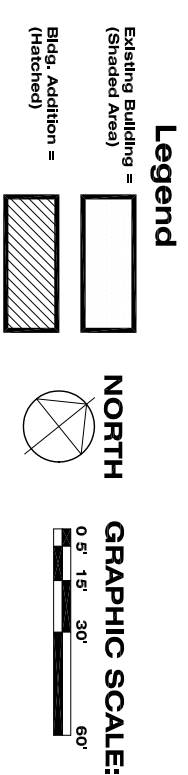
- # Number of Parking Spaces
- # Est. Parking Capacity w/ Valet Parking

## Valet Circulation Legend

- VP → VP → VALET PARKING ROUTE
- ← VR ← VR ← VALET RETURN ROUTE
- VALET STAND

## 1 SITE PLAN-VALET CIRCULATION

SCALE: 1" = 20'-0"



ARCHITECTURE  
INTERIOR DESIGN  
MASTER PLANNING  
FOOD SERVICE PLANNING

1520 W. AIRPORT FREEWAY, SUITE 200  
IRVING, TEXAS 75062  
TEL.: (972) 253-5383  
FAX: (972) 253-5383  
WWW.CCIBUILDDESIGN.COM

CLUB DESIGN THAT WORKS

# Valet Circulation Site Plan

August 31, 2009

Additions and Alterations to:  
**The Country Club of Coral Gables**  
Coral Gables, Florida

Dwg. No. **12**