


*Coastal
Management
Element*

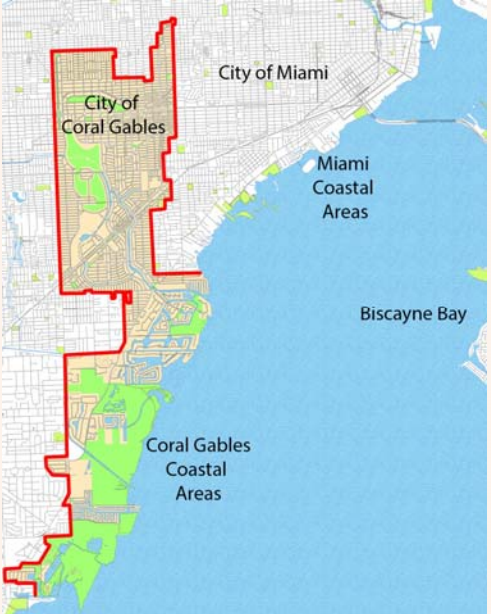
COMPREHENSIVE PLAN
TEXT AMENDMENT

CITY COMMISSION
NOVEMBER 14, 2017



The top page of the exhibit features a map of the Coral Gables coastal area on the left, showing streets, green spaces, and the coastline. To the right of the map is a light beige background containing the title 'Coastal Management Element' in a large, green, serif font. Below the title is a horizontal line, followed by the text 'COMPREHENSIVE PLAN TEXT AMENDMENT' in a smaller, green, sans-serif font. Further down, the text 'CITY COMMISSION NOVEMBER 14, 2017' is displayed in a green, sans-serif font. At the bottom right of this section is the official seal of the City of Coral Gables, Florida, which is circular and contains the city's name and the state of Florida.

BOUNDARIES OF COASTAL AREAS



City of Miami
City of Coral Gables
Miami Coastal Areas
Biscayne Bay
Coral Gables Coastal Areas

2

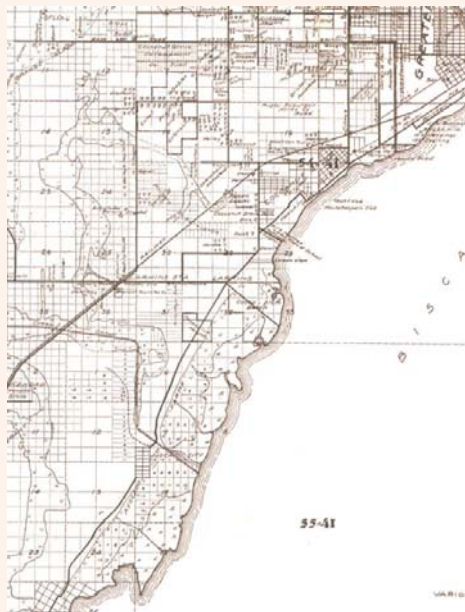
The bottom page of the exhibit is titled 'BOUNDARIES OF COASTAL AREAS' in a large, green, serif font. Below the title is a map showing the geographical relationship between the City of Coral Gables and the City of Miami. The City of Coral Gables is outlined in red, and the City of Miami is outlined in blue. The map also shows the Miami Coastal Areas in green and Biscayne Bay in blue. The text 'City of Miami', 'City of Coral Gables', 'Miami Coastal Areas', 'Biscayne Bay', and 'Coral Gables Coastal Areas' is placed on the map to identify these regions. In the bottom right corner of the map area, the number '2' is displayed.

BOUNDARIES OF COASTAL AREAS



3

NATURAL RESOURCES: 1914 MIAMI-DADE



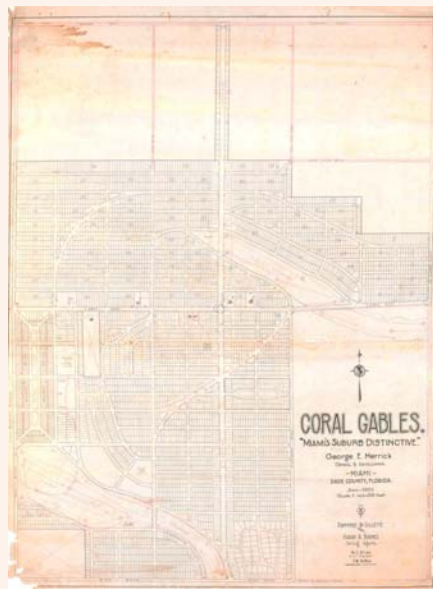
4

PUBLIC ACCESS IN THE COASTAL AREAS



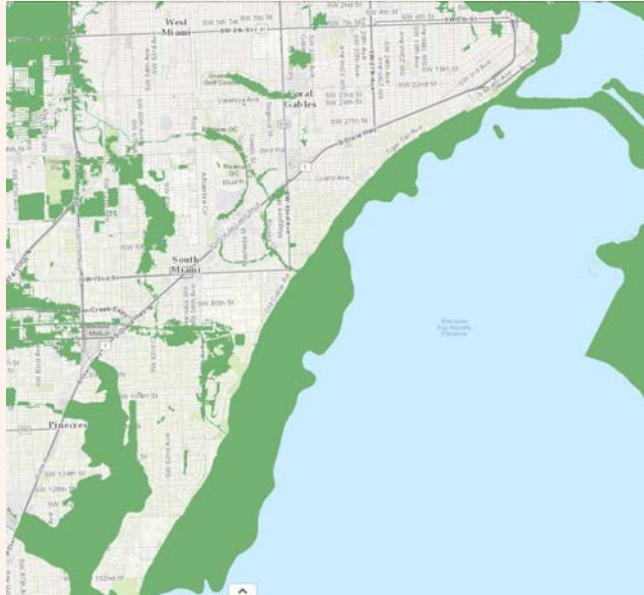
5

HISTORIC AND EXISTING LAND USES



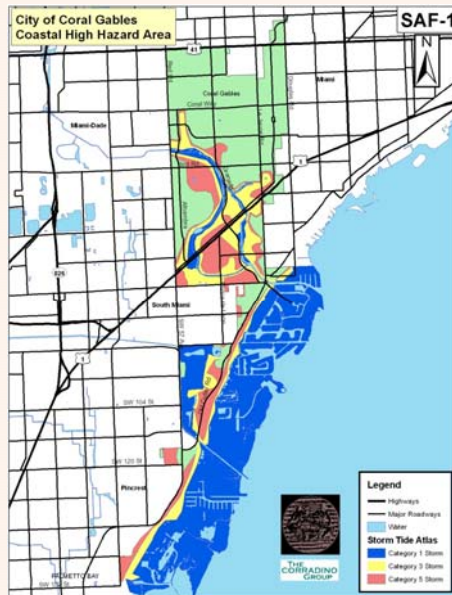
6

100-YEAR PLAN



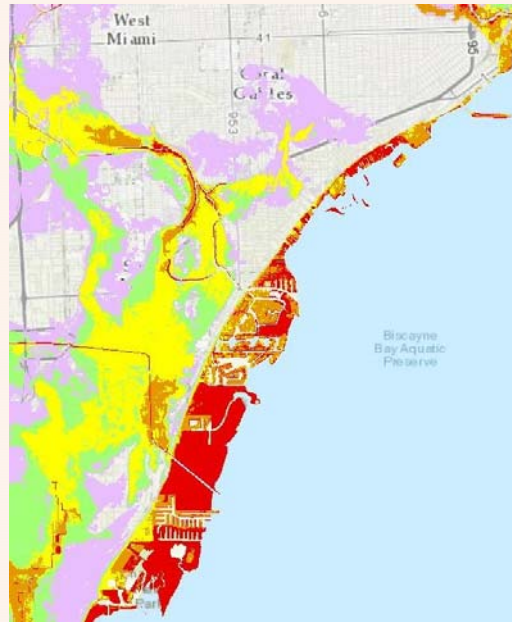
9

STORM TIDES DIAGRAM



10

STORM TIDES DIAGRAM



11

PROPOSED COASTAL MANAGEMENT

VISION STATEMENT:

PROVIDE DEVELOPMENT PRINCIPLES
THAT SUPPORT THE HIGHEST
QUALITY OF LIFE AND PROMOTE
SUSTAINABLE COASTAL AREAS.

12

PROPOSED COASTAL MANAGEMENT

GOAL CMT-1. MAINTAIN, PROTECT, AND ENHANCE THE QUALITY OF LIFE AND APPEARANCE OF CORAL GABLES' COASTAL ZONE INCLUDING THE PRESERVATION OF NATURAL RESOURCES AS WELL AS THE ENHANCEMENT OF THE BUILT ENVIRONMENT.

OBJECTIVE CMT-1.1. PRESERVE AND PROTECT EXISTING NATURAL SYSTEMS INCLUDING WETLANDS AND MANGROVE SYSTEMS WITHIN MATHESON HAMMOCK PARK AND THOSE PORTIONS OF BISCAYNE BAY THAT LIE WITHIN THE CITY'S BOUNDARIES.

OBJECTIVE CMT-1.2. CONTINUE ENFORCEMENT OF THE FLORIDA BUILDING CODE, WHICH ESTABLISHES CONSTRUCTION STANDARDS THAT MINIMIZE THE IMMEDIATE AND LONG TERM IMPACTS OF BUILDINGS AND STRUCTURES ON COASTAL AREAS.

PROPOSED COASTAL MANAGEMENT

OBJECTIVE CMT-1.3. SUPPORT BOARD OF ARCHITECTS REVIEW PROCESS TO MAINTAIN THE AESTHETIC QUALITY AND COMPATIBILITY OF BUILDINGS AND STRUCTURES IN COASTAL AREAS.

OBJECTIVE CMT-1.4. ENSURE THAT LAND DEVELOPMENT REGULATIONS AND POLICIES FOR THE COASTAL ZONE ARE CONSISTENT WITH THE CITY'S ABILITY TO PROVIDE THE CAPITAL FACILITIES REQUIRED TO MAINTAIN ADOPTED LOS STANDARDS AND THOSE NEEDED TO MAINTAIN OR ENHANCE THE QUALITY OF LIFE WITHIN THE COASTAL ZONE OF THE CITY.

PROPOSED COASTAL MANAGEMENT

GOAL CMT-2. PROMOTE BEST PRACTICES AND PROCEDURES TO MINIMIZE PERIL OF FLOOD.

OBJECTIVE CMT-2.1. REDUCE NATURAL HAZARD IMPACTS THROUGH COMPLIANCE WITH FEDERAL EMERGENCY MANAGEMENT AGENCY (FEMA) REGULATIONS AND BY TARGETING REPETITIVE FLOOD LOSS AND VULNERABLE PROPERTIES FOR MITIGATION.

PROPOSED COASTAL MANAGEMENT

GOAL CMT-3. PROMOTE BEST PRACTICES FOR POST DISASTER REDEVELOPMENT AND HAZARD MITIGATION.

OBJECTIVE CMT-3.1. COORDINATE WITH THE MIAMI-DADE COUNTY OFFICE OF EMERGENCY MANAGEMENT (OEM) TO DEVELOP AND IMPLEMENT POST-DISASTER REDEVELOPMENT AND HAZARD MITIGATION PLANS THAT REDUCE OR ELIMINATE EXPOSURE OF LIFE AND PROPERTY TO NATURAL HAZARDS TOWARDS THE PROTECTION OF HEALTH, SAFETY, AND WELFARE WITHIN THE CITY.

PROPOSED COASTAL MANAGEMENT

GOAL CMT-4. IMPROVE PUBLIC AWARENESS, APPRECIATION, AND USE OF CORAL GABLES' COASTAL RESOURCES BY PRESERVING WATER-DEPENDENT AND WATER-RELATED USES, ENSURING ADEQUATE PUBLIC ACCESS TO SUCH USES, AND MINIMIZING USER CONFLICTS.

OBJECTIVE CMT-4.1. WHEREVER FEASIBLE, INCREASE, PHYSICAL AND VISUAL PUBLIC ACCESS TO BISCAYNE BAY, THE CITY'S SHORELINES AND WATERWAYS.

OBJECTIVE CMT-4.2. THE CITY SHALL STRIVE TO ALLOW NO NET LOSS OF ACREAGE DEVOTED TO RECREATIONAL AND COMMERCIAL WORKING WATERFRONT USES IN THE COASTAL AREA OF THE CITY OF MIAMI.

STAFF RECOMMENDATION:

TRANSMIT THE PROPOSED AMENDMENTS TO DEPARTMENT OF ECONOMIC OPPORTUNITY (DEO).



Coastal Management Element

COMPREHENSIVE PLAN
TEXT AMENDMENT

CITY COMMISSION
NOVEMBER 14, 2017

