

WINDOWS (ZONE 4)											
TYPE	SIZE (in)	AREA	GCP		GCPi		WIND PRESSURE EXISTING (psf)		WIND PRESSURE ALLOWABLE (psf)		ACCEPTANCE No
			S.F.	+	-	+	-	+	-	+	
1	74"x50 5/8"	13.00	0.98	1.08	0.18	0.18	39.40	42.80	49.90	49.90	11-1110.18 CAS(X)/IMP.GLASS TYPE A
2	37"x38 3/8"	9.85	1.00	1.10	0.18	0.18	40.10	43.40	67.90	67.90	11-1110.18 CAS(X)/IMP.GLASS TYPE A
3	53 1/8"x38 3/8"	7.07	1.00	1.10	0.18	0.18	40.10	43.40	75.00	75.00	11-1114.04 HR(XO)/IMP.GLASS TYPE A
4	74"x50 5/8"	13.00	0.98	1.08	0.18	0.18	39.40	42.80	75.00	75.00	11-1114.04 HR(XO)/IMP.GLASS TYPE A
5	37"x26"	3.34	1.00	1.10	0.18	0.18	40.10	43.40	75.00	75.00	11-1114.04 HR(XO)/IMP.GLASS TYPE A
6	53 1/8"x38 3/8"	14.15	0.97	1.07	0.18	0.18	39.20	42.60	45.50	45.50	11-1110.17 CAS(X)PROJ/IMP.GLASS TYPE A
7	74"x38 3/8"	9.85	1.00	1.10	0.18	0.18	40.10	43.40	75.00	75.00	11-1114.04 HR(XO)/IMP.GLASS TYPE A
8	37"x38 3/8"	4.92	1.00	1.10	0.18	0.18	40.10	43.40	75.00	75.00	11-1114.04 HR(XO)/IMP.GLASS TYPE A

WINDOWS (ZONE 5)											
TYPE	SIZE (in)	AREA	GCP		GCPi		WIND PRESSURE EXISTING (psf)		WIND PRESSURE ALLOWABLE (psf)		ACCEPTANCE No
			S.F.	+	-	+	-	+	-	+	
5	37"x26"	3.34	1.00	1.40	0.18	0.18	40.10	53.60	75.00	75.00	11-1114.04 HR(XO)/IMP.GLASS TYPE A

FIXED GLASS (ZONE 4)											
TYPE	SIZE (in)	AREA	GCP		GCPi		WIND PRESSURE EXISTING (psf)		WIND PRESSURE ALLOWABLE (psf)		ACCEPTANCE No
			S.F.	+	-	+	-	+	-	+	
9	106"x38"	27.97	0.92	1.02	0.18	0.18	37.40	40.80	58.30	58.30	11-1110.15 PW/IMP.GLASS TYPE A
10	26 1/2"x63"	11.59	0.99	1.09	0.18	0.18	39.70	43.10	80.00	80.00	11-1110.15 PW/IMP.GLASS TYPE A
11	71"x63"	31.06	0.91	1.01	0.18	0.18	37.10	40.50	64.00	64.00	11-1110.15 PW/IMP.GLASS TYPE A

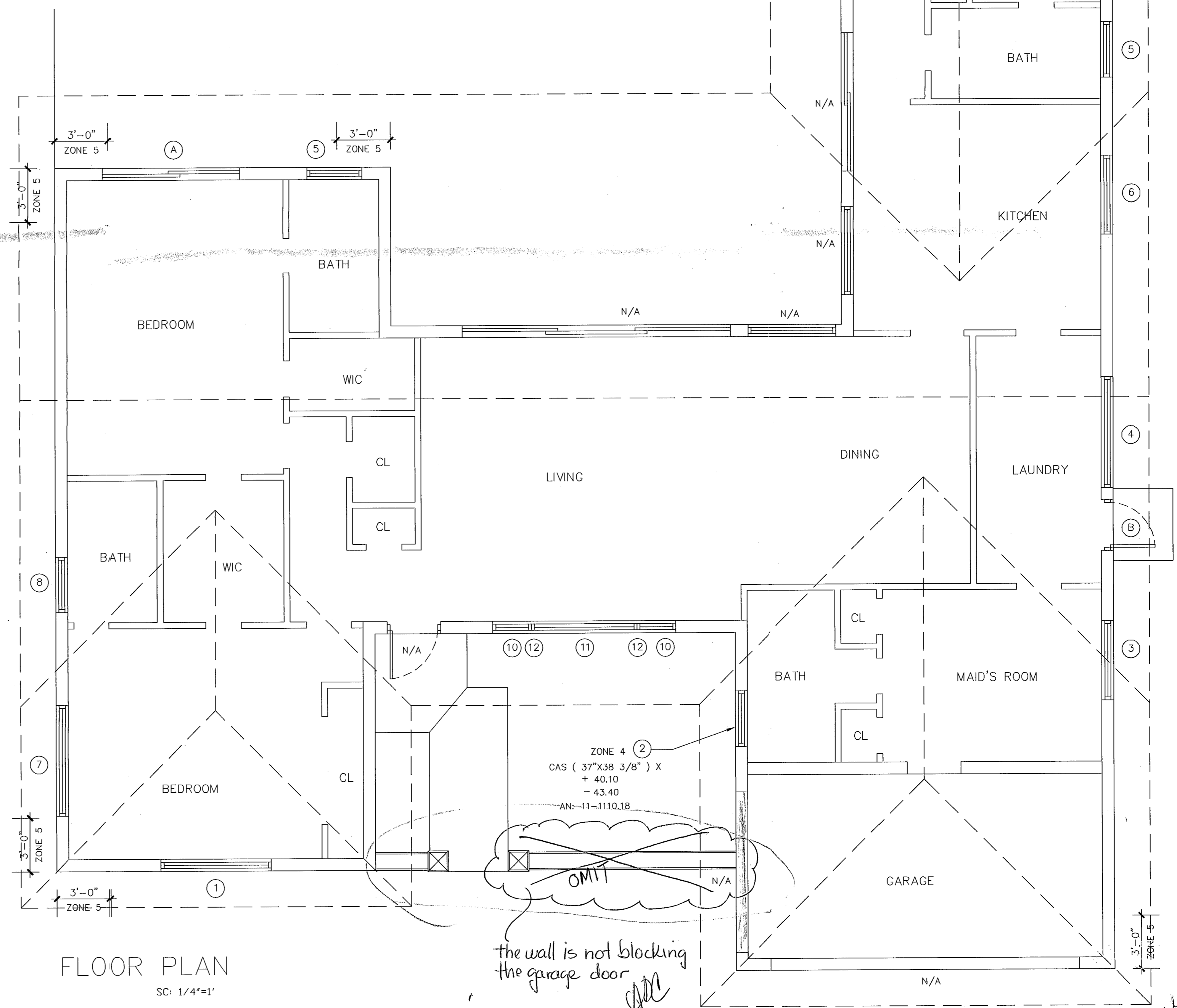
DOORS (ZONE 4)											
TYPE	SIZE (in)	AREA	GCP		GCPi		WIND PRESSURE EXISTING (psf)		WIND PRESSURE ALLOWABLE (psf)		ACCEPTANCE No
			S.F.	+	-	+	-	+	-	+	
A	7'-8"x6'-10"	26.19	0.93	1.03	0.18	0.18	37.50	40.90	60.00	60.00	11-1018.14 SGG(X)/IMP.GLASS TYPE G3
B	2'-10"x6'-8"	18.88	0.95	1.05	0.18	0.18	38.40	41.80	75.00	75.00	11-1013.22 FD(X)/IMP.GLASS TYPE A

MULLIONS								
TYPE	HEIGHT	CONSTRUCTION	WIND PRESSURE (psf)		TYPE	WIND PRESSURE ALLOWABLE (psf)		ACCEPTANCE No
			+	-		-	+	
12	63"	97"	39.70	43.10	1X2.75	75.90	75.90	11-0922.01
13	38"	70"	37.40	40.80	1X2.75	170.0	170.0	11-0922.01

N/A

ALL RAILINGS, SHUTTERS AND AWNINGS WILL BE REMOVED BEFORE INSTALLATION

$q_z = 0.00256 K_z K_{zt} K_d V^2$
 $H = 11'-6"$
 EXPOSURE - C
 $I = N/A$
 $V = 175 \text{ MPH}$
 $K_h = 0.85$
 $K_{zt} = 1.00$
 $K_d = 0.85$
 $q_h = 0.00256 (0.85) (1.00) (0.85) (175)^2$
 $q_h = 56.57 \text{ PSF}$
 $W = q_h (G_{cp} + /- G_{cpi})$
 $P = 0.60W$



FLOOR PLAN
SC: 1/4"=1'

REVISIONS	BY

Juan A. Rodriguez - RA
JOMOLCA
 ARCHITECTS P.A.
 625 SW 82 AVE. MIAMI, FL 33134
 (305) 571-1331
 (305) 571-1332

FLOOR PLAN AND CALCULATIONS.

NEW WINDOWS for
 MR. GORDO GOMEZ
 1130 ALFONSO AVE
 CORAL GABLES, FL. 33146

DRAWN	ADC
CHECKED	JAR
DATE	01/31/13
SCALE	1/4"=1'
JOB NO.	GLASS & MIRROR
SHEET	A-1
1 OF 2 SHEETS	

NO.	REVISIONS	BY

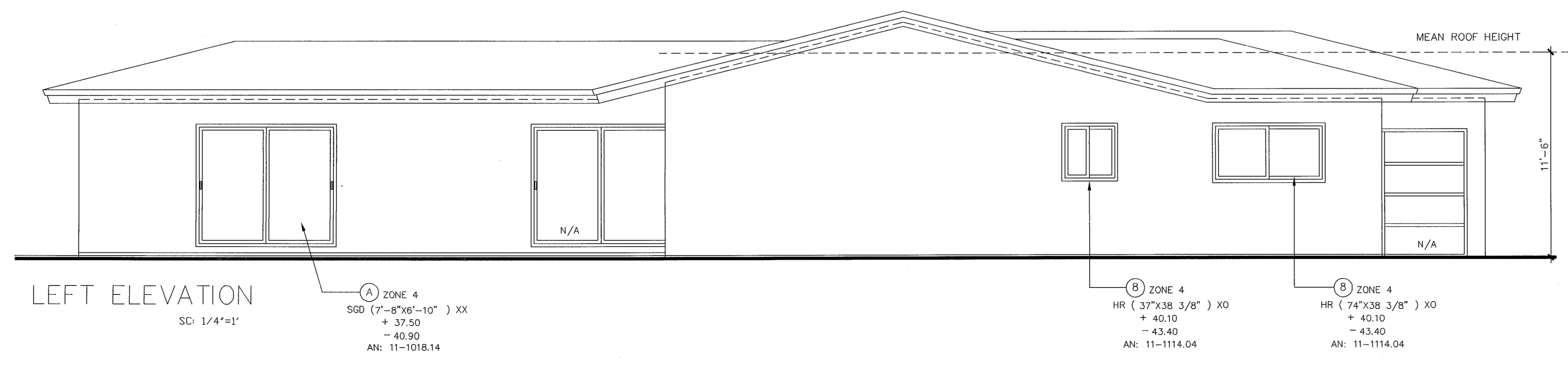
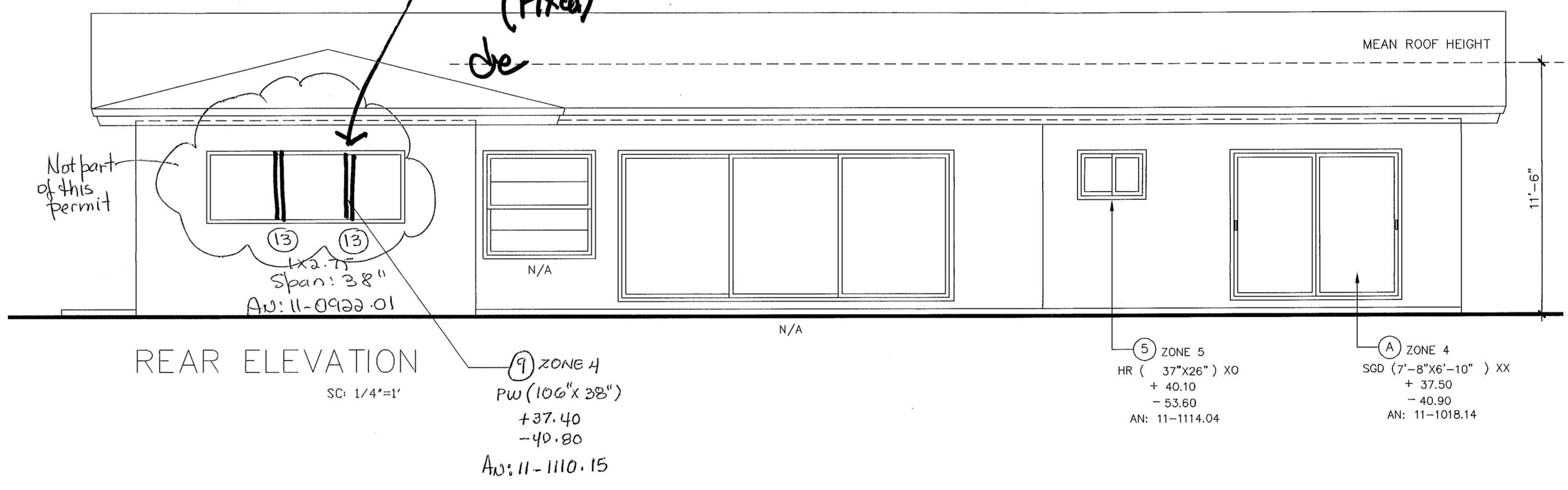
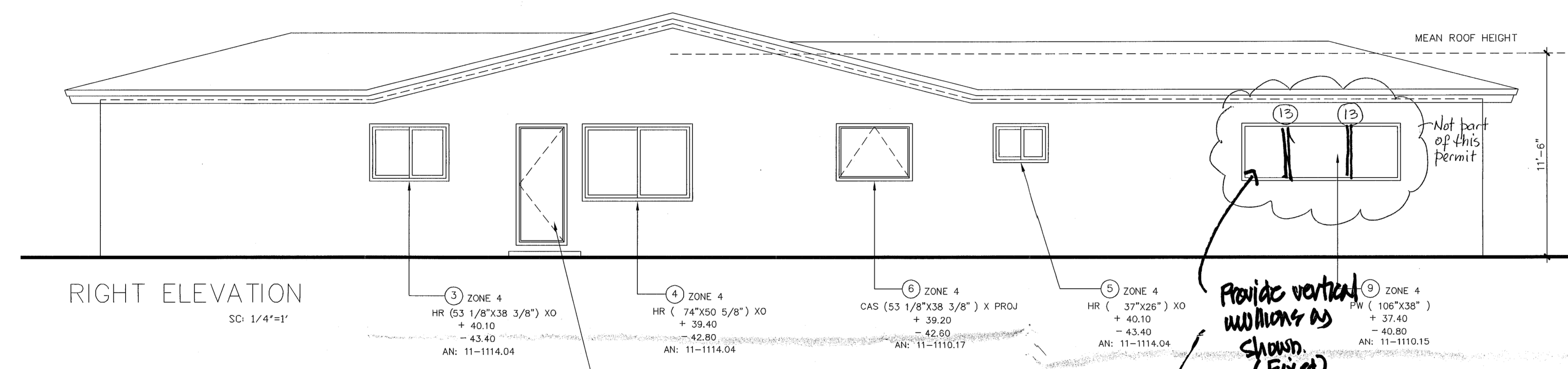
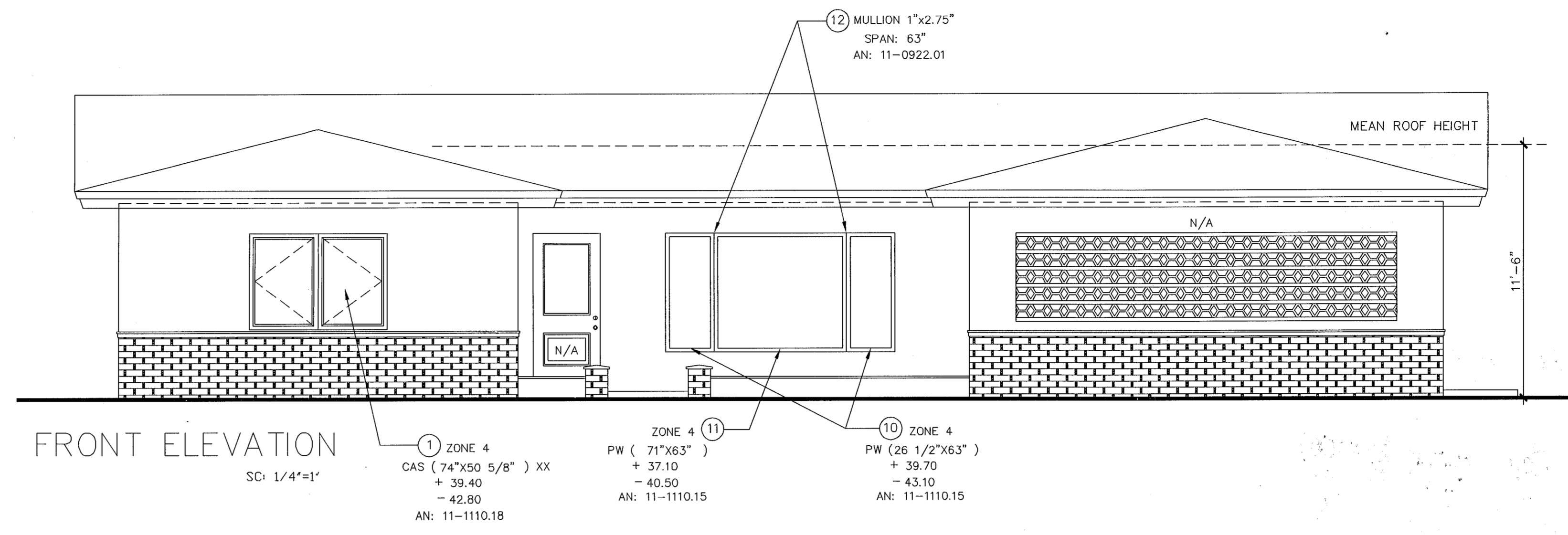
Juan A. Rodriguez - RA
JOMOLCA
 ARCHITECTS, P.A.
 INTERIOR DESIGNERS
 625 SW 82 AVE. MIAMI, FLORIDA 33144
 TEL: (305) 593-3201
 FAX: (305) 593-3338



ELEVATIONS

NEW WINDOWS for
 Mr. GARDO GOMEZ
 1130 ALFONSO AVE
 CORAL GABLES, FL. 33146

DRAWN	ADC
CHECKED	JAR
DATE	01/31/13
SCALE	1/4"=1'
JOB NO.	GLASS & MIRROR
SHEET	A-2
2	OF 2 SHEETS



ALL RAILINGS, SHUTTERS AND AWNINGS
 WILL BE REMOVED BEFORE INSTALLATION

*Quick
 1-2-13*

B.O.A. # AB 13020119

Applic. # 16855
2/1/13

Job Description: Aluminum Windows (14)
Door (1)
White Clear

OFFICE SET

City of Coral Gables
Building & Zoning Department

Permit #: BL13020321
Address: 1130 Alford Ave

Section	By	Date
APPROVED		
BOARD APPROV	CONN	02-01-13 (AS NOTED)
COMPLETION	ET	2/13/13 R 2/1/13
PLUMBING		
ELECTRICAL		
Mechanical		
INSULATION		
FOUNDATION		
CONCRETE		
ROOFING		
STREET CLOSURE		
ENVIRONMENTAL		
OTHER		

add 2/1/13

Subject to compliance with all Federal, State, County and City rules and regulations. City assumes no responsibility for copying color plates from this plate.
THIS COPY OF PLANS MUST BE AVAILABLE ON BUILDING SITE.
IF AN INSPECTION WILL NOT BE MADE. 52009

Pursuant to the Florida Administrative Code, notice of all construction site activities shall be submitted to the Department of Building and Safety (DBS) in accordance with the Florida Building Code (FBC).