

*ALHAMBRA AND BLUE  
ROAD SIDEWALKS*

APRIL 26, 2022

**CORAL  
GABLES**®  
THE CITY BEAUTIFUL





# BACKGROUND

**PROJECT LIMITS:** ALHAMBRA CIRCLE FROM SALVATIERRA DRIVE TO SAN RAFAEL AVENUE

**PROJECT LENGTH**

APPROXIMATELY 0.12 MILES

**THREE INTERSECTIONS**

SALVATIERRA DRIVE

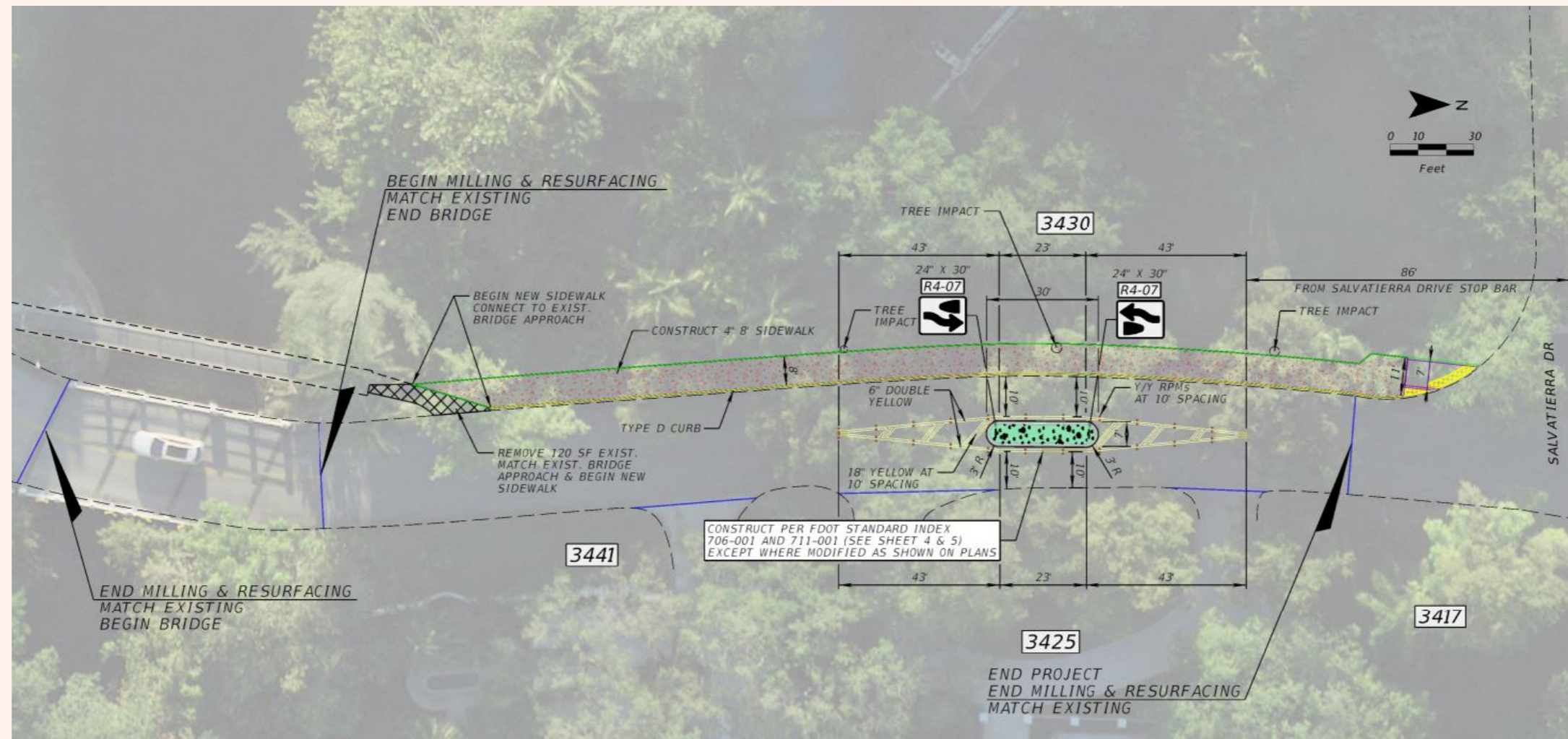
TREVINO AVENUE

SAN RAFAEL AVENUE



# BACKGROUND

- SIDEWALK CONNECTION FROM CORAL GABLES WATERWAY BRIDGE TO LE JEUNE ROAD
- TRAFFIC CALMING PROJECT ON SALVATIERRA DRIVE WILL INCLUDE SIDEWALK ON WEST SIDE OF THE PROJECT TO PROVIDE ACCESS TO BRIDGE
- COMPLETE MISSING CONNECTION FOR APPROXIMATELY 2.93 MILES OF CONTINUOUS SIDEWALK ALONG ALHAMBRA CIRCLE





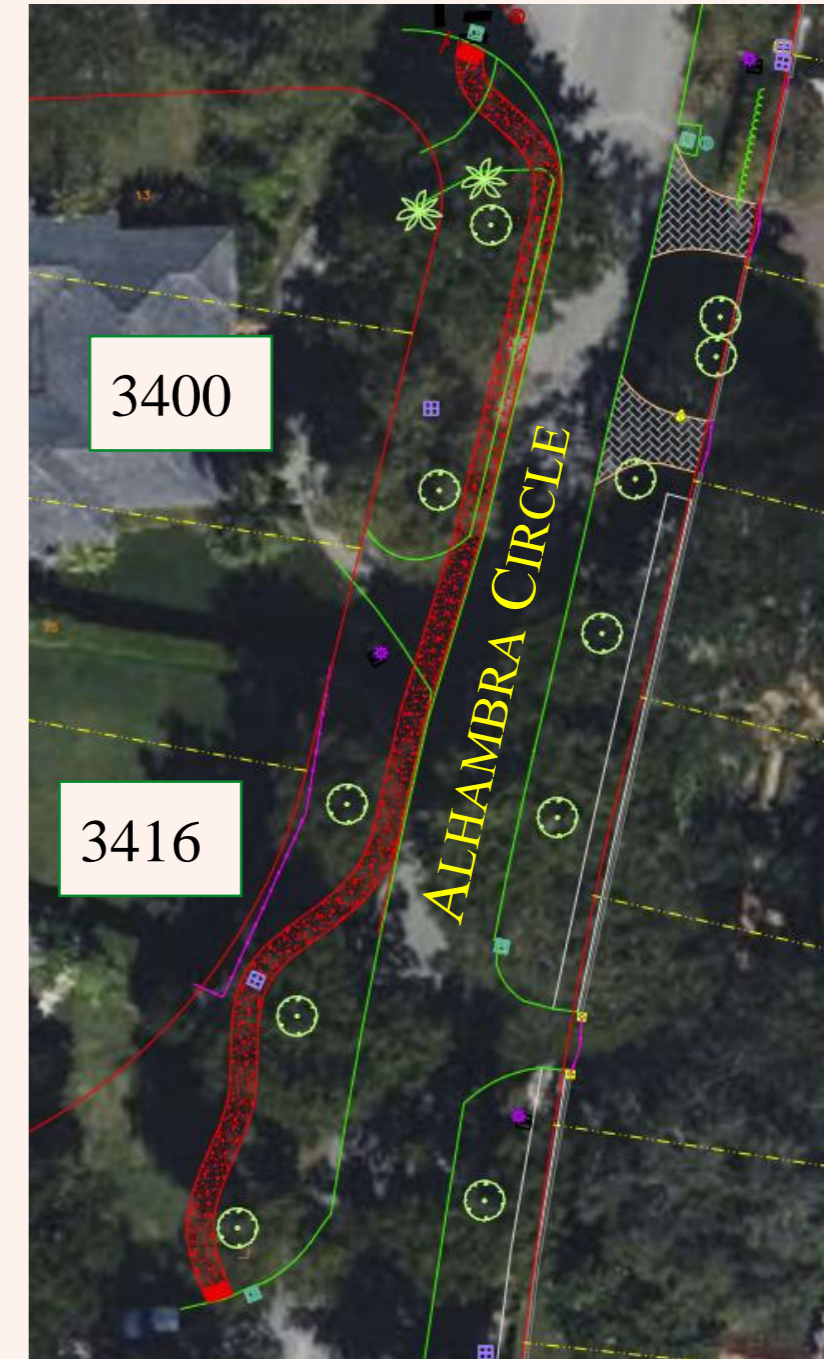
# PROPOSED SIDEWALK

## SALVATIERRA DRIVE TO TREVINO AVE

- 3416 AND 3400 ALHAMBRA CIRCLE
- 6-FOOT PROPOSED CONCRETE SIDEWALK
- CONCRETE CURB
- PAVEMENT NARROWING
- HIGH EMPHASIS CROSSWALKS

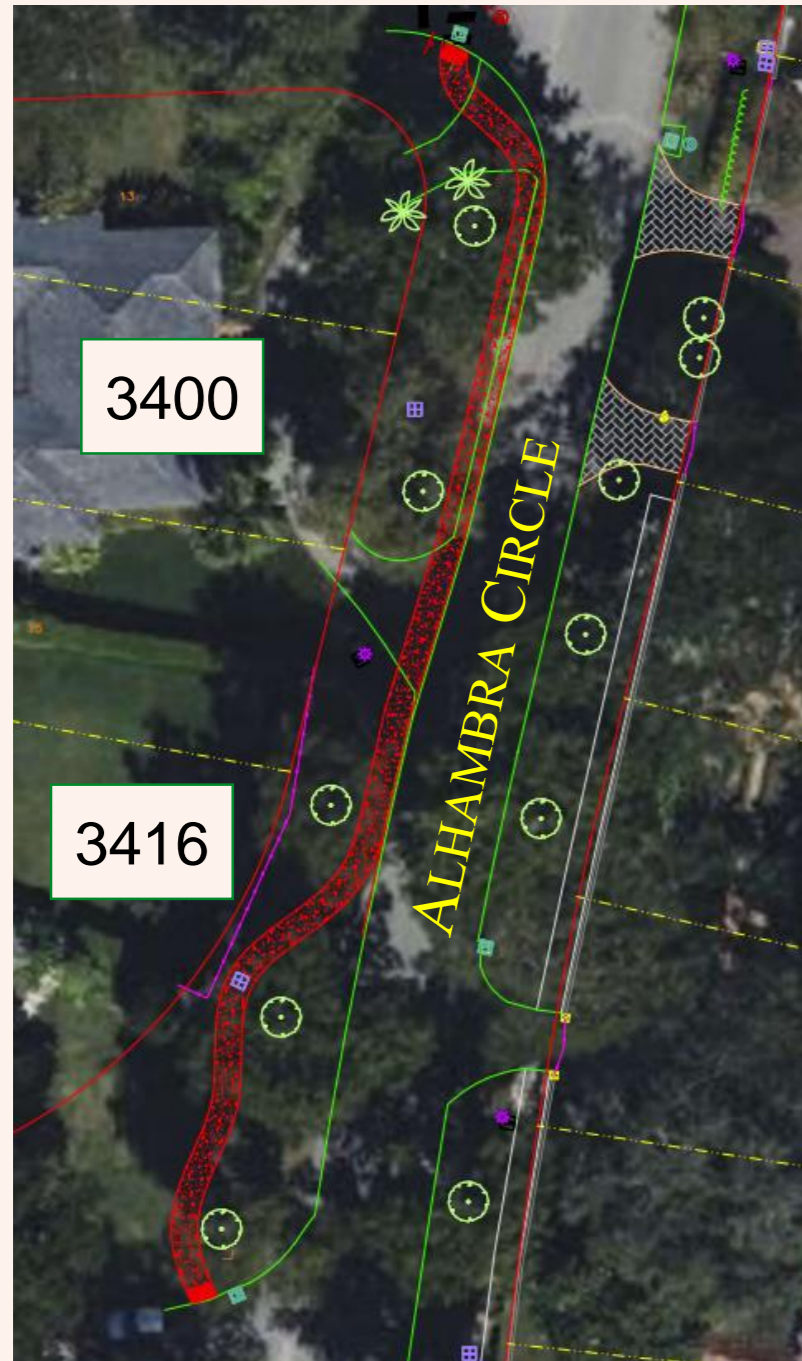
## POTENTIAL IMPACTS

- DRIVEWAY RESTORATION
- DRAINAGE
- TREE ROOTS



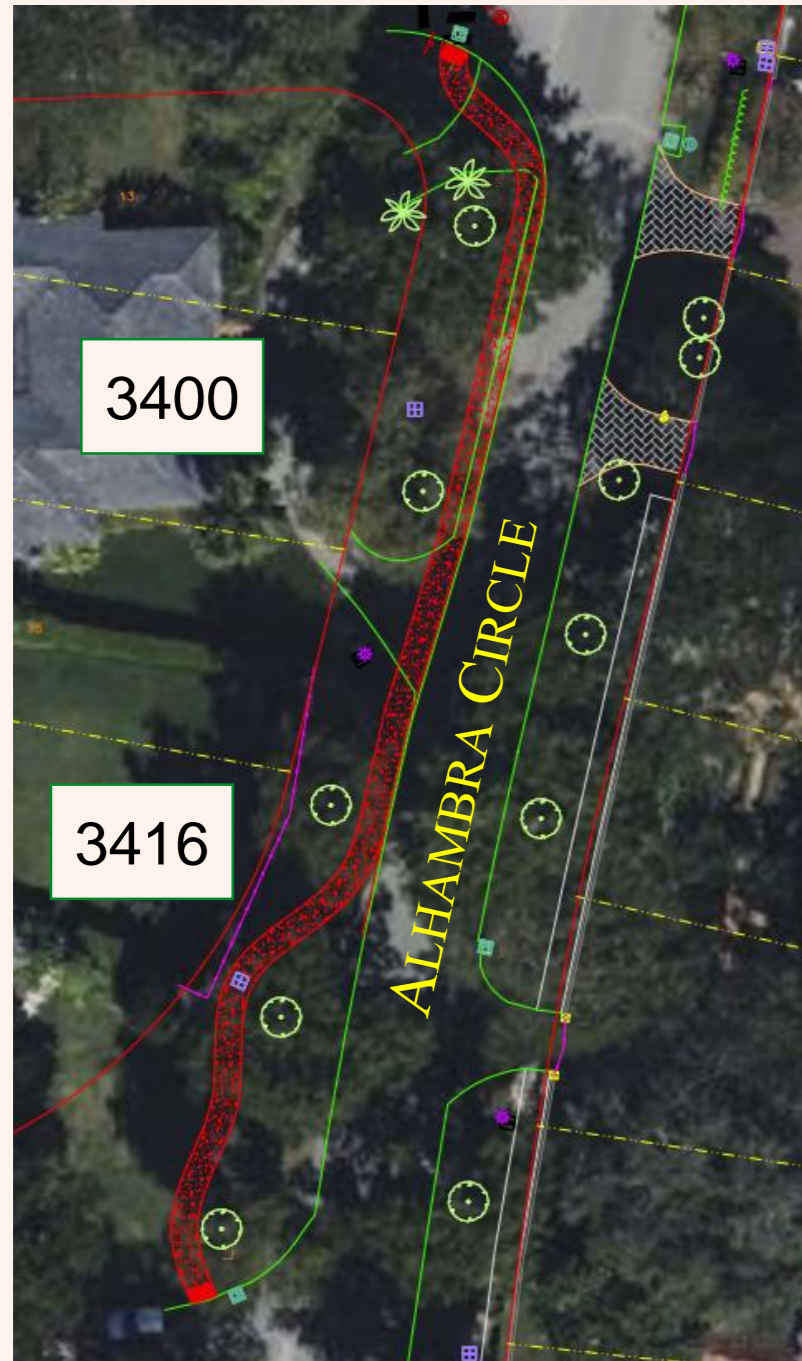


# 3416 ALHAMBRA CIRCLE



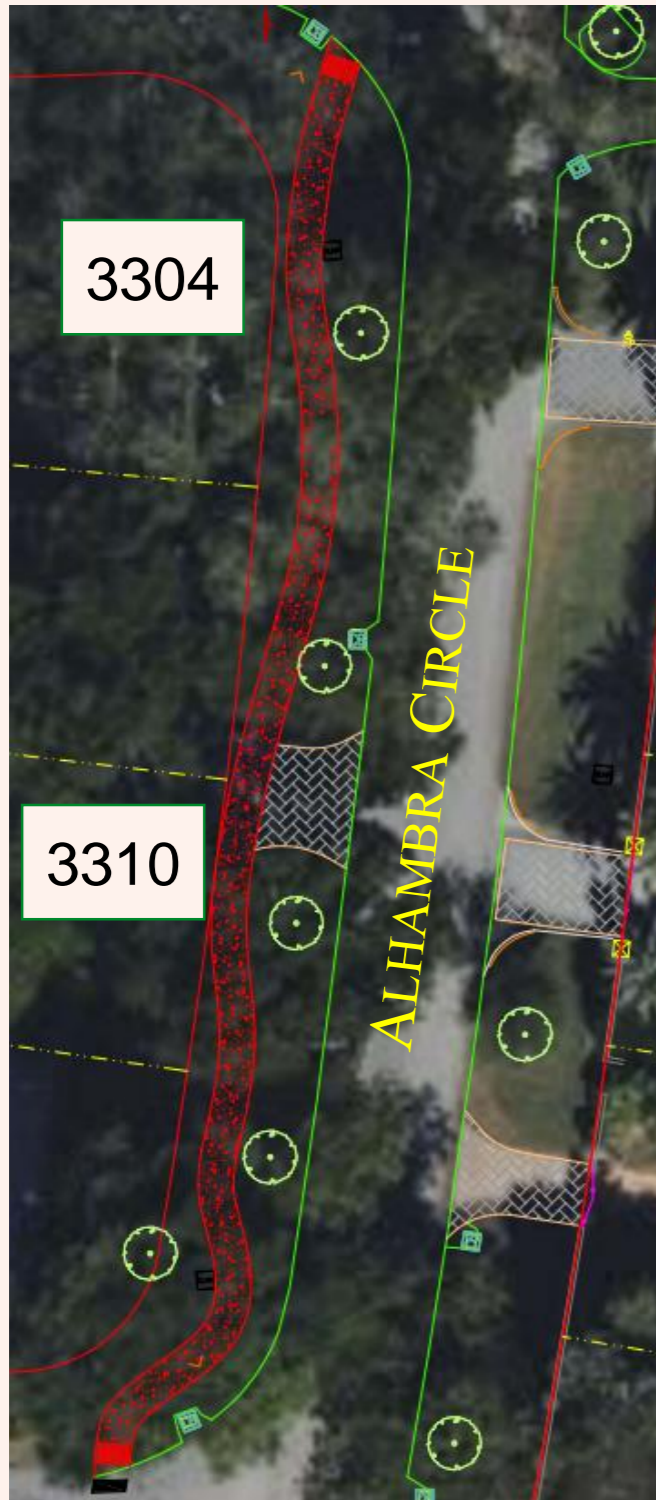


# 3400 ALHAMBRA CIRCLE





# PROPOSED SIDEWALK



## TREVINO AVE TO SAN RAFAEL AVE

- 3310 AND 3304 ALHAMBRA CIRCLE
- 6-FOOT PROPOSED CONCRETE SIDEWALK
- HIGH EMPHASIS CROSSWALKS

## POTENTIAL IMPACTS

- DRIVEWAY RESTORATION
- DRAINAGE
- TREE ROOTS



# 3310 ALHAMBRA CIRCLE





# 3304 ALHAMBRA CIRCLE

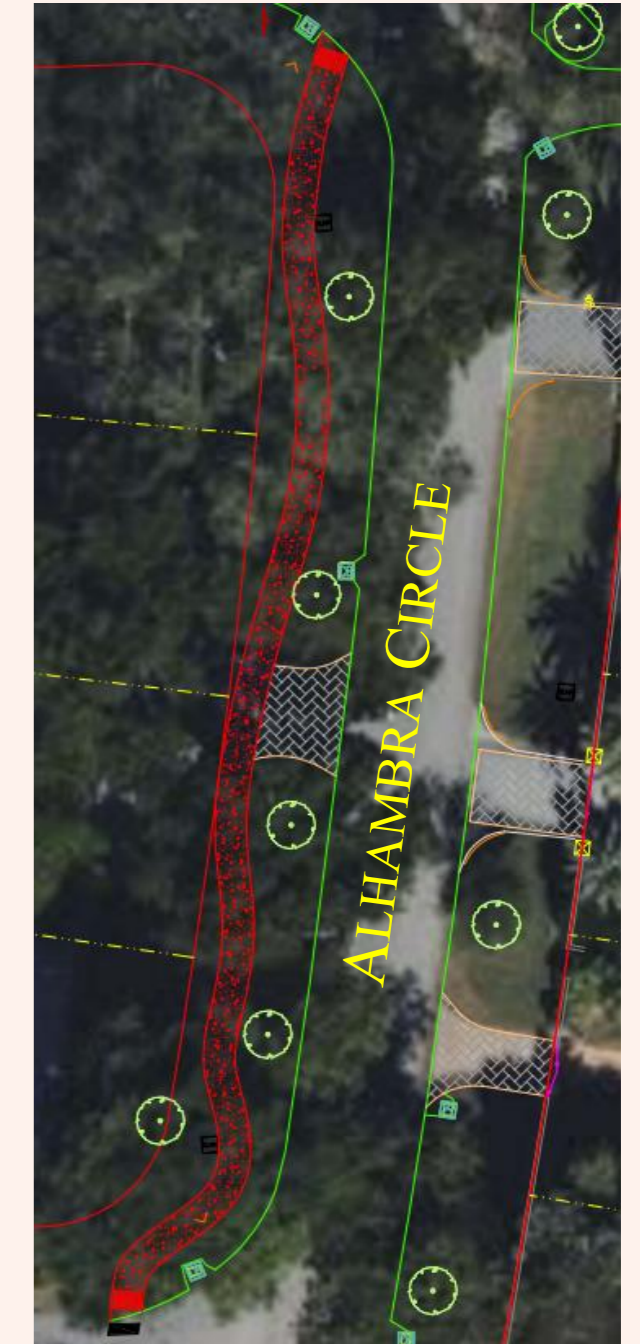




# ALHAMBRA SIDEWALK SUMMARY



- NO TREES WILL BE REMOVED OR RELOCATED
- THREE (3) DRIVEWAYS WILL BE IMPACTED
  - ONE (1) BRICK PAVER DRIVEWAY
  - TWO (2) ASPHALT DRIVEWAYS
- DRAINAGE WILL BE IMPACTED
  - NEW CONCRETE CURB
  - ONE (1) CATCH BASIN TO BE RELOCATED
- PAVEMENT WILL BE NARROWED AND RESURFACED
- CONSTRUCTION ESTIMATE (NOT ESCALATED)
  - SIDEWALK - \$56,000
  - PAVING – \$25,000
  - DRAINAGE – TO BE DETERMINED





# BACKGROUND

- **PROJECT LIMITS:** BLUE ROAD FROM RIVIERA COUNTRY CLUB TO EAST OF ORDUNA DRIVE – APPROXIMATELY 0.26 MILES

- **THREE INTERSECTIONS**

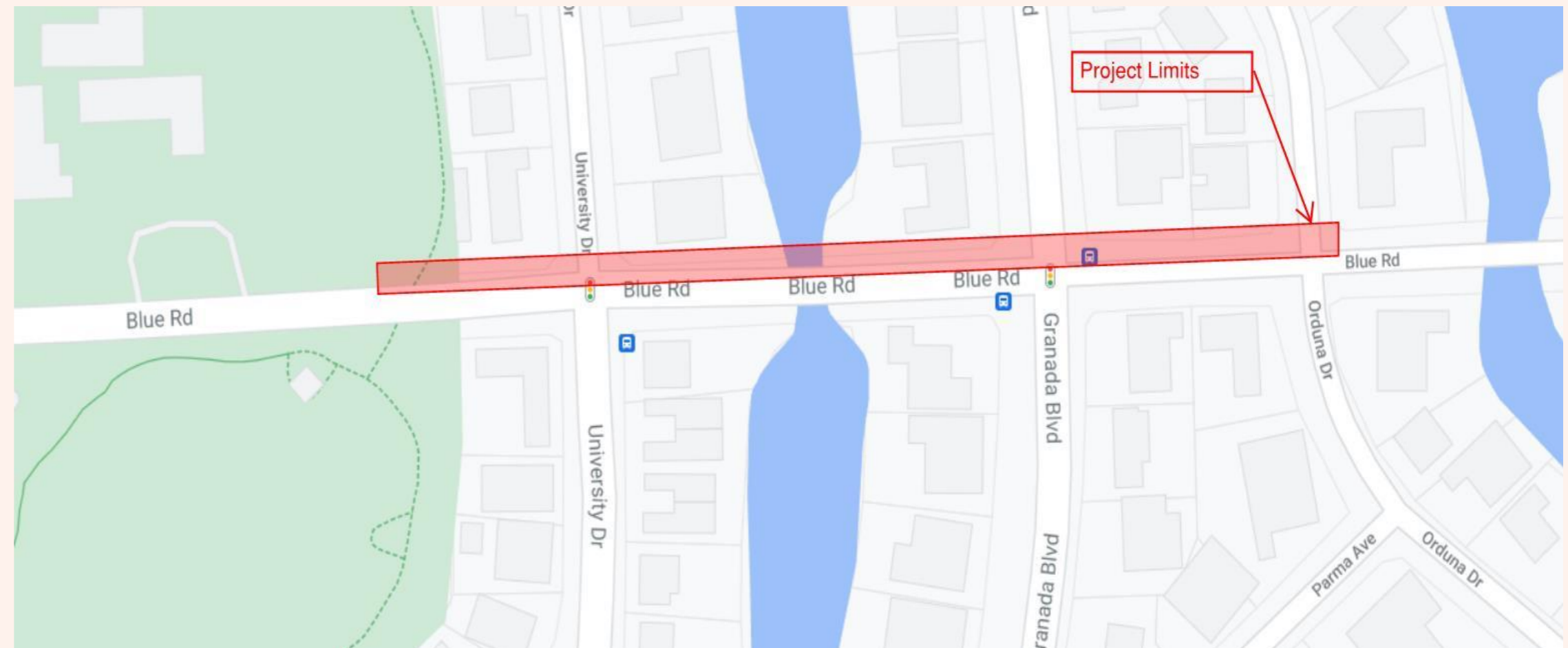
- UNIVERSITY DRIVE
- GRANADA BOULEVARD
- ORDUNA DRIVE

- **SIGNALIZED INTERSECTIONS**

- UNIVERSITY DRIVE
- GRANADA DRIVE

- **UNSIGNALIZED INTERSECTION**

- ORDUNA DRIVE
  - STOP CONTROL FOR NB AND SB TRAFFIC





# BACKGROUND

- RIVIERA COUNTRY CLUB – NORTH SIDE OF BLUE ROAD
- 10-FOOT PROPOSED CONCRETE PATH TO BE CONSTRUCTED BY DEVELOPER.
- PROPOSED SIDEWALK UNDER DEVELOPMENT ALONG UNIVERSITY DRIVE (EAST AND WEST SIDE)
- 1 TREE IMPACTED



Tree Identification Number	Removal (Y/N)	Reason
1	Y - Relocation	Sidewalk / Utility Conflict – Water Line



# BACKGROUND

- UNIVERSITY DRIVE – NORTH SIDE OF BLUE ROAD
- 6-FOOT PROPOSED CONCRETE SIDEWALK TO CONNECT TO EXISTING CONCRETE CROSSWALK AND CONTINUE EAST ALONG BLUE ROAD
- 3 TREES IMPACTED



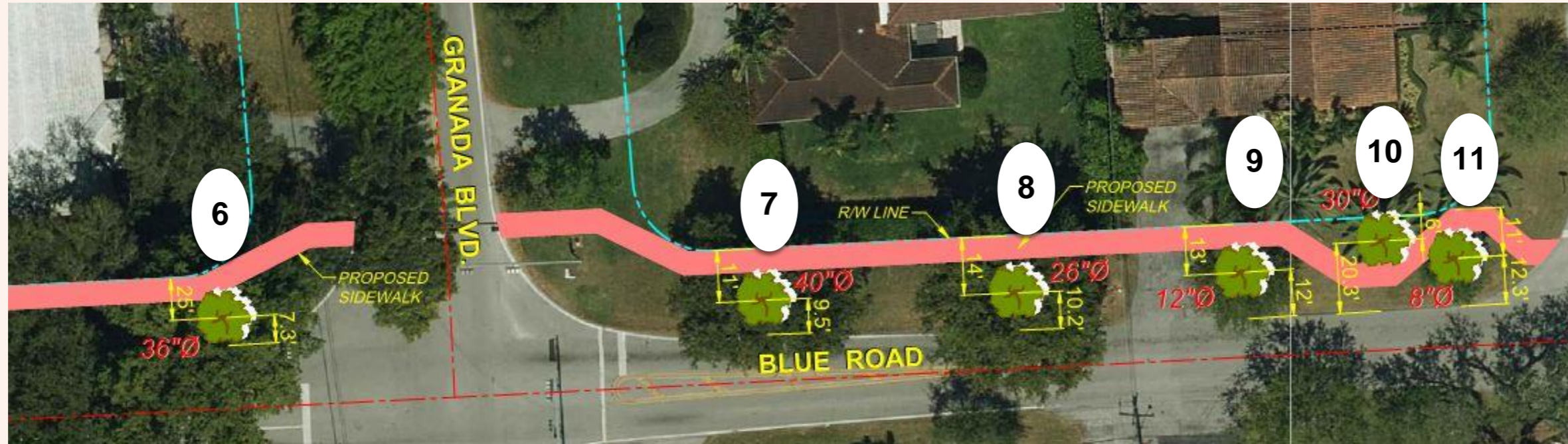
Tree Identification Number	Removal (Y/N)	Reason
2	Y	Sidewalk Conflict
3	Y	Sidewalk Conflict
4	Y	Sidewalk Conflict
5	N	-



# BACKGROUND



- GRANADA BOULEVARD – NORTH SIDE OF BLUE ROAD
- 6-FOOT PROPOSED CONCRETE SIDEWALK
- NO TREES IMPACTED



Tree Identification Number	Removal (Y/N)	Reason
6	N	-
7	N	-
8	N	-
9	N	-
10	N	-



# BACKGROUND



- ORDUNA DRIVE – NORTH SIDE OF BLUE ROAD
- 6-FOOT PROPOSED CONCRETE SIDEWALK TO CONNECT TO EXISTING CONCRETE SIDEWALK AND CONTINUE EAST ALONG BLUE ROAD TO PROPOSED PARK
- NO TREES IMPACTED



Tree Identification Number	Removal (Y/N)	Reason
12	N	-
13	N	-
14	N	-
15	N	-



# TREE IMPACT (CONT'D)



**TREE 1 - TO BE RELOCATED**



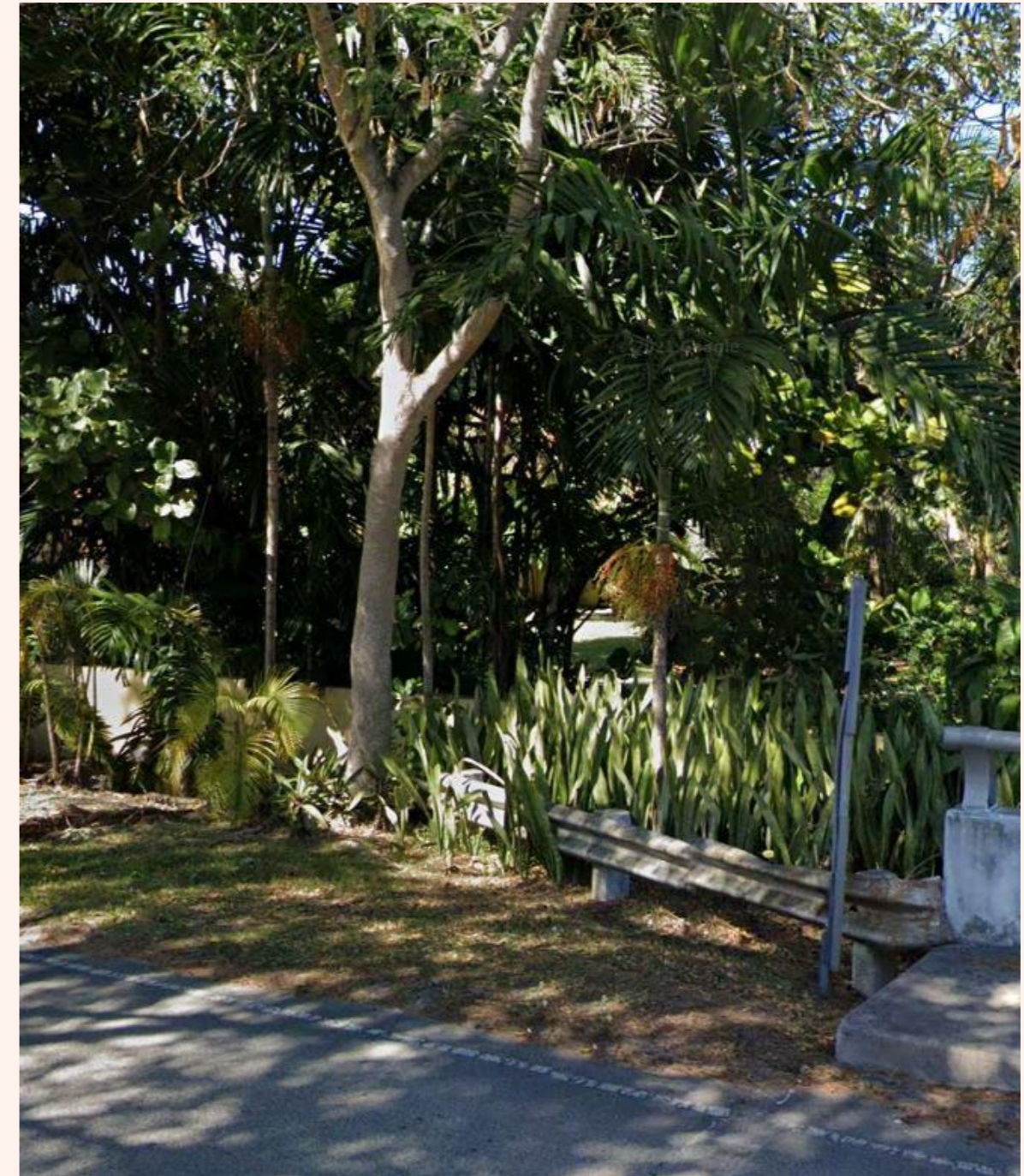
**TREE 2 – TO BE REMOVED**



# TREE IMPACT (CONT'D)



**TREE 3 – TO BE REMOVED**



**TREE 4 – TO BE REMOVED**



# BLUE ROAD SIDEWALK SUMMARY



- APPROXIMATELY 10,000 SF OF SIDEWALK BEING PROPOSED
- APPROXIMATE CONSTRUCTION COST \$132,000
- SURVEY COMPLETED
- DESIGN – 3 MONTHS
- MDC REVIEW – 6 MONTHS
- CONSTRUCTION 2023 (REQUIRES MIAM-DADE COUNTY APPROVAL)



THANK YOU



CORAL  
GABLES  
THE CITY BEAUTIFUL

