

Alhambra Circle Sidewalk

October 22, 2024

CORAL
GABLES®
THE CITY BEAUTIFUL

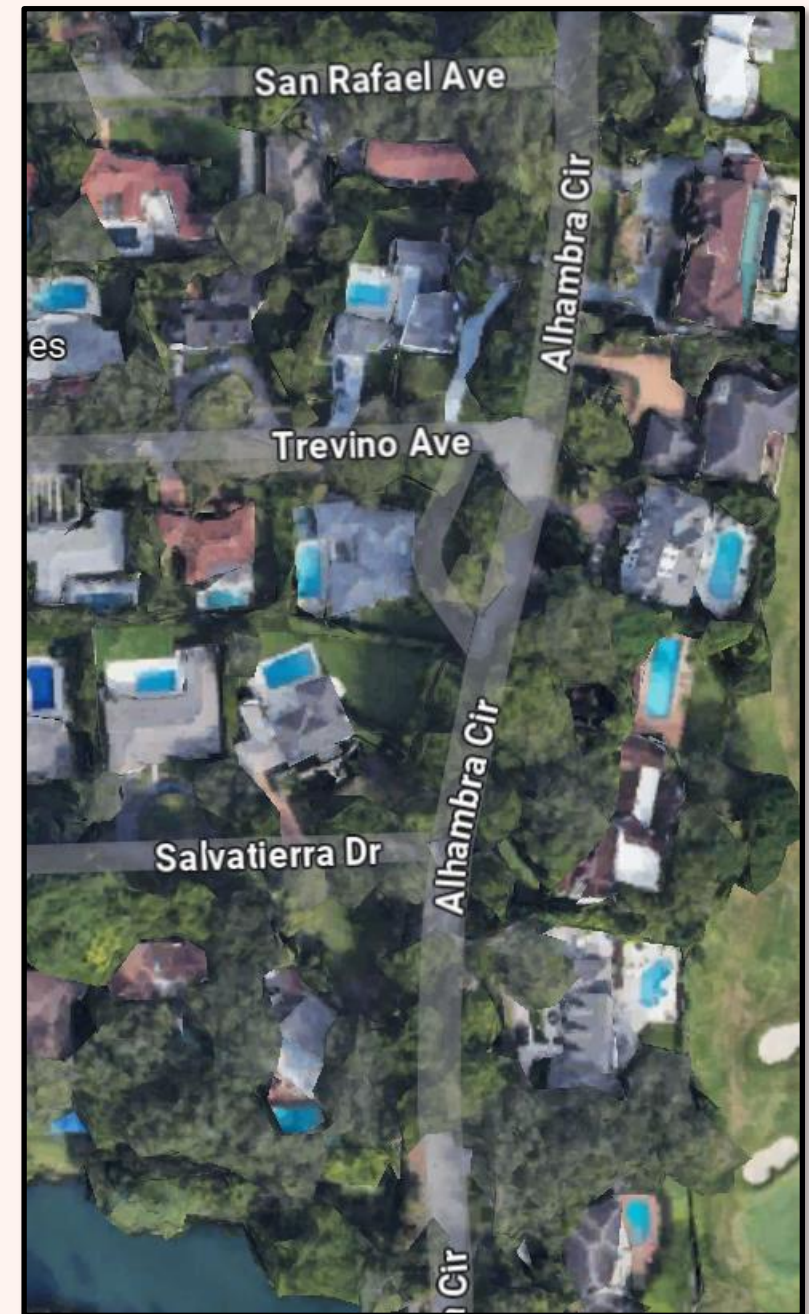


INTRODUCTION

2

2

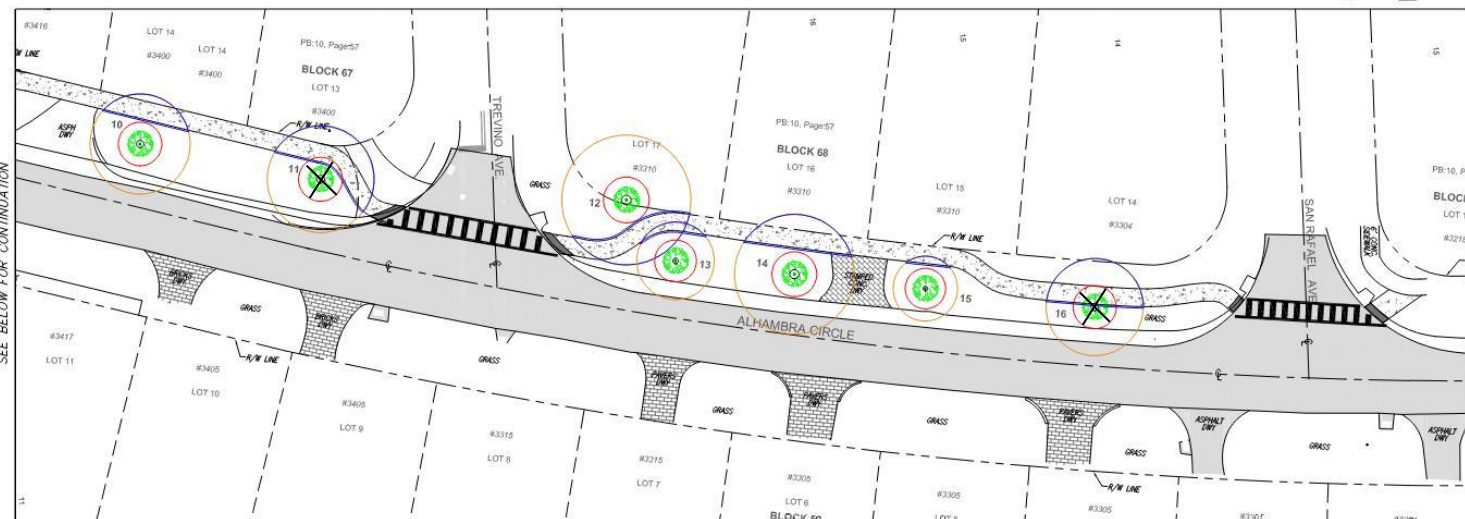
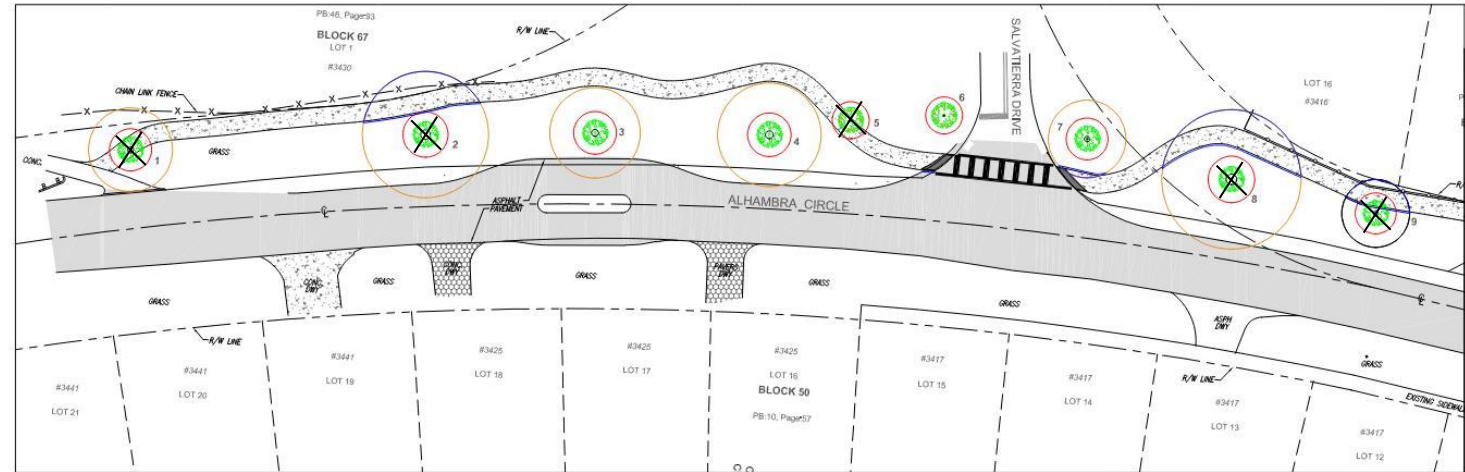
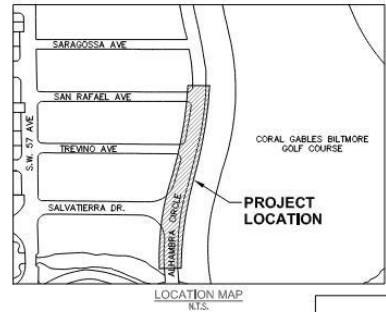
- ❖ Staff was directed at the September 10, 2024, Commission meeting to present an additional option for the Alhambra Circle sidewalk at the ROW line with no concrete curb
- ❖ Plan concept was developed
- ❖ City surveyor installed stakes along the proposed sidewalk path
- ❖ Field meeting held with arborist to review the new plan concept
- ❖ Tree impacts were analyzed based on criteria established in the City Code



PLAN VIEW

2

2



- LEGEND:**
- EXISTING FIRE HYDRANT
 - EXISTING MANHOLE
 - EXISTING COMMUNICATION MANHOLE
 - EXISTING SANITARY MANHOLE
 - EXISTING STORM MANHOLE
 - EXISTING P.V. MANHOLE
 - EXISTING CONCRETE POLE
 - EXISTING CONCRETE LIGHT POLE
 - EXISTING LIGHT POLE
 - EXISTING WOOD POLE
 - EXISTING CATCH BASIN
 - EXISTING ELECTRIC BOX
 - EXISTING WATER VALVE
 - EXISTING IRRIGATION VALVE
 - EXISTING HEAD SPRINKLER
 - EXISTING WATER METER
 - EXISTING SIGN
 - EXISTING TRAFFIC SIGNAL BOX
 - EXISTING CLEAN-OUT
 - EXISTING SPOT LIGHT
 - EXISTING PARKING METER
 - EXISTING PRESSURE VACUUM BREAKER
 - EXISTING CHECK VALVE
 - EXISTING GAS VALVE
 - EXISTING SANITARY VALVE
 - EXISTING MONITORING WELL
 - EXISTING TRAFFIC LIGHT POLE
 - EXISTING WALK LIGHT
 - EXISTING GUY WIRE ANCHOR
 - EXISTING ELEVATION
 - RIGHT
 - LEFT
 - CENTER LINE
 - FOUND DRILL HOLE
 - ENCROACHMENT
 - ELEC
 - FP
 - GH
 - HW
 - IND
 - P.B.
 - RECORD
 - MEASURE
 - R
 - A
 - ARC DISTANCE
 - BO
 - CS
 - SD
 - ONL
 - R/W LINE
 - WLP



DEPARTMENT OF PUBLIC WORKS
DIVISION OF ENGINEERING

TOPOGRAPHIC & SPECIFIC SURVEY
3430 ALHAMBRA CIRCLE

SHEET TITLE

OPTION 3

NO.	DATE	REVISIONS	BY:

ENGINEER OR ARCHITECT

CONSULTANT

PRO. NO.	DRAW	CHECK	APPR.

1 OF 1

CORAL GABLES TREE PROTECTION STANDARDS

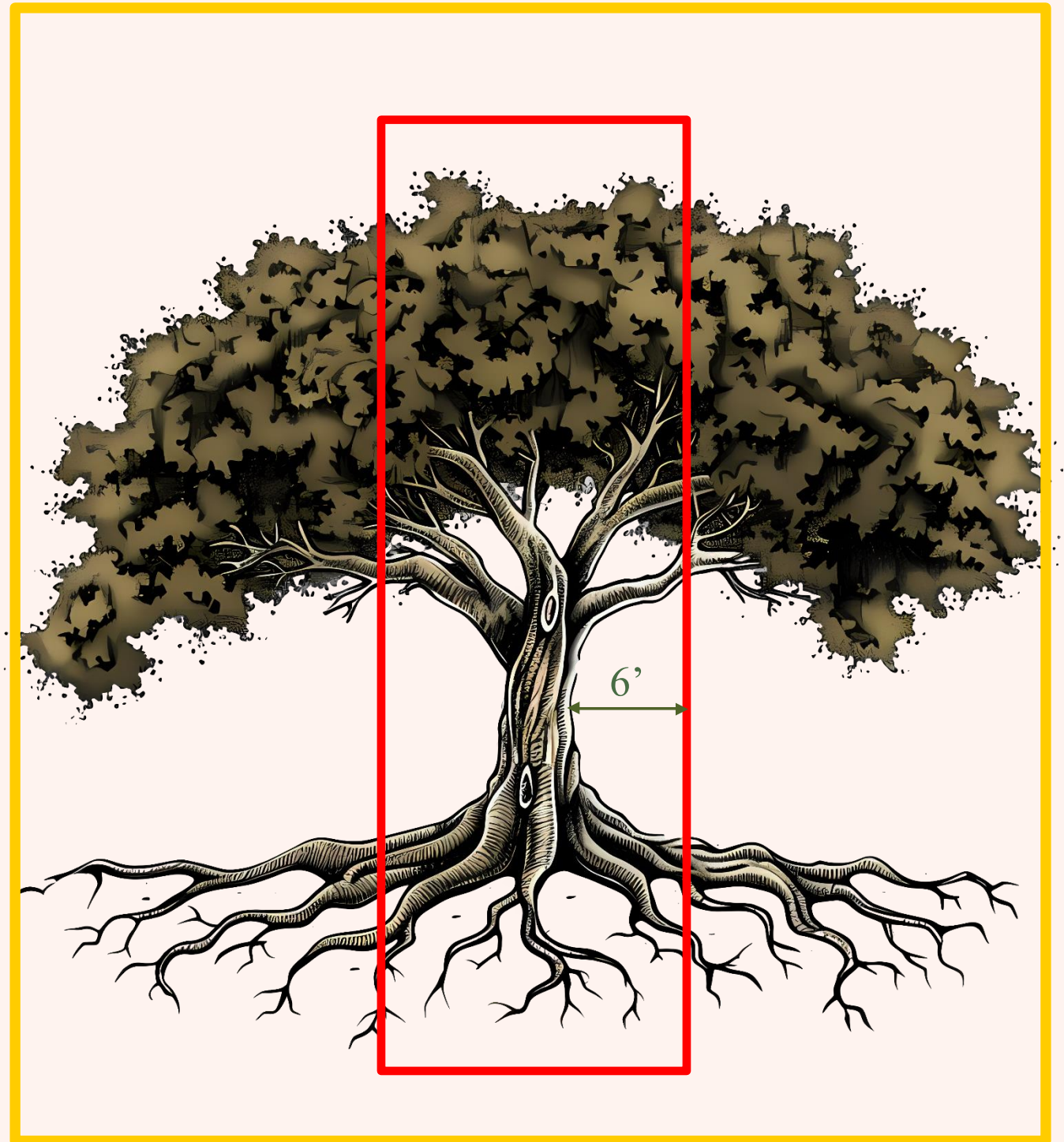


Tree Modification includes :

- Cutting any roots greater than two inches in diameter of a specimen tree within six feet of the trunk
- Cutting more than 25 percent of the roots of a specimen tree within the drip line of the tree to a depth greater than six inches

Tree Protection Zone – minimum of 1 foot away from the trunk for every one inch of trunk radius

- No more than 25 percent of roots in this zone should be cut at one time.



TREE PROTECTION ZONE
(1-INCH FOR EVERY 1-INCH TRUNK RADIUS)

ROOT PROTECTION ZONE

TREE NO.	TREE DIAMETER (IN)	TREE RPZ DIAMETER	SIDEWALK IMPACT AREA	PERCENTAGE SIDEWALK IN RPZ
1	26	28	619.42	100%
2	39	42	395.30	28%
3	28	30	0.00	0%
4	32	35	0.00	0%
5	6	7	32.99	100%
6	18	20	0.00	0%
7	24	26	22.67	4%
8	43	47	506.43	30%
9	21	23	154.87	38%
10	31	34	189.49	22%
11	33	36	427.13	43%
12	40	43	375.26	26%
13	24	26	55.55	11%
14	37	40	307.38	25%
15	20	22	30.99	8%
16	30	33	395.71	48%

*

*

****Percentage calculations based on 6-foot sidewalk**

TREE NO. 1

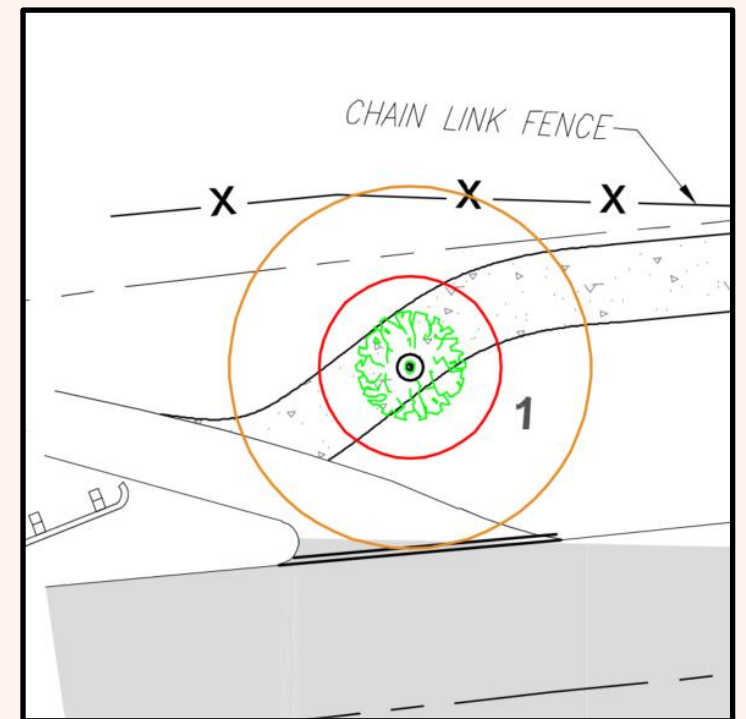
2

2



Tree Details:

- Black Olive (Specimen)
- Poor Condition
- 26-inch diameter
- 28-foot RPZ
- 100% sidewalk (6') impact in RPZ



TREE NO. 2

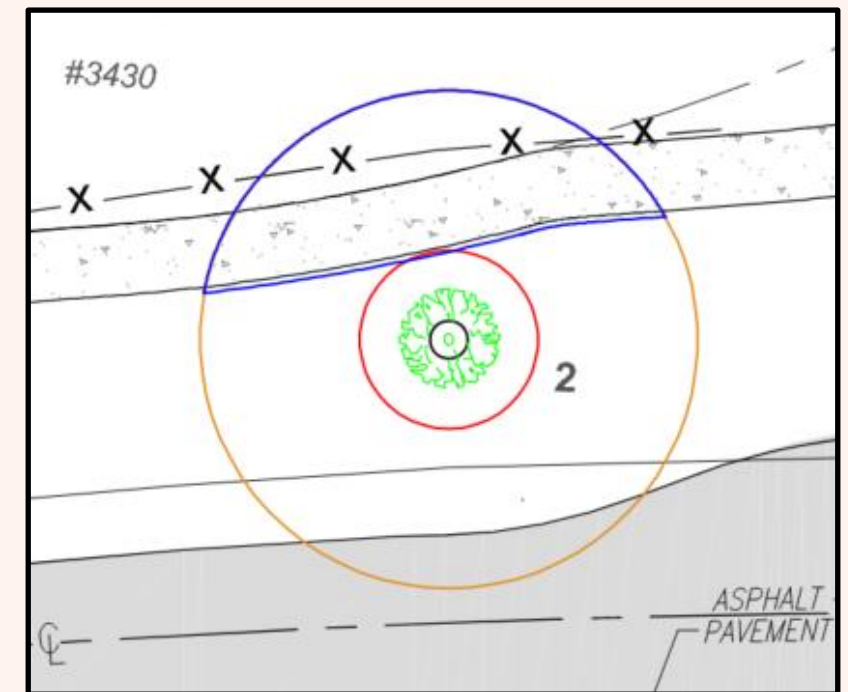
2

2



Tree Details:

- Black Olive (Specimen)
- Fair Condition
- 39-inch diameter
- 42-foot RPZ
- 28% sidewalk (6') impact in RPZ
- 26% sidewalk (5') impact in RPZ



TREE NO. 5

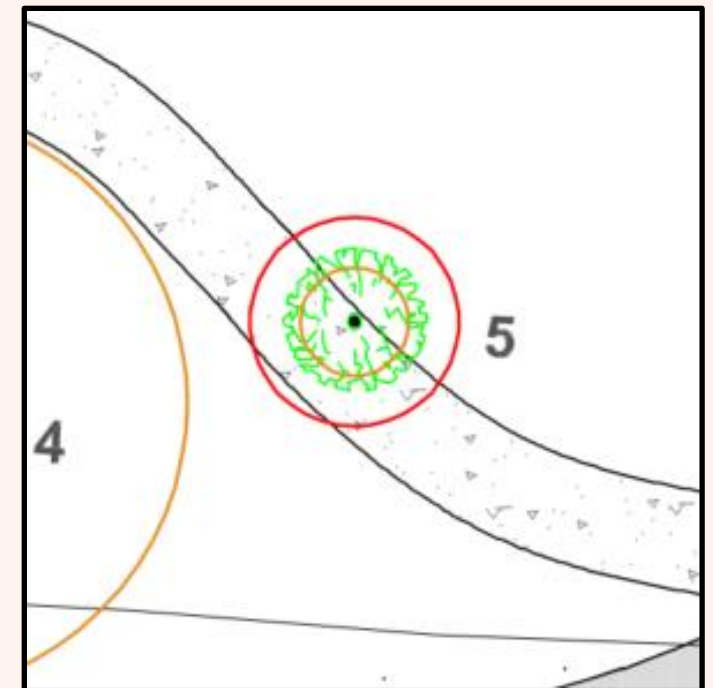
2

2



Tree Details:

- Crape Myrtle
- Fair Condition
- 6-inch diameter
- 7-foot RPZ
- 100% sidewalk (6') impact in RPZ



TREE NO. 8

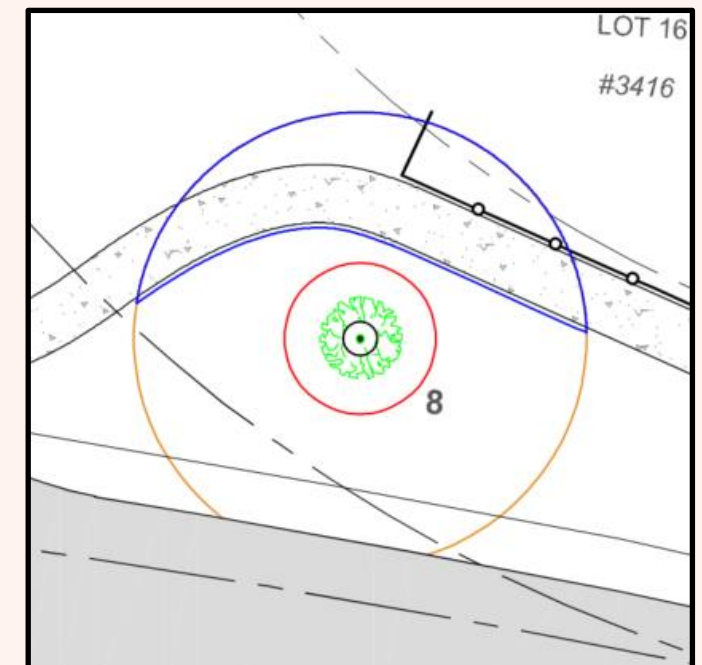
2

2



Tree Details:

- Black Olive (Specimen)
- Fair Condition
- 43-inch diameter
- 47-foot RPZ
- 30% sidewalk (6') impact in RPZ
- 27% sidewalk (5') impact in RPZ



TREE No. 9

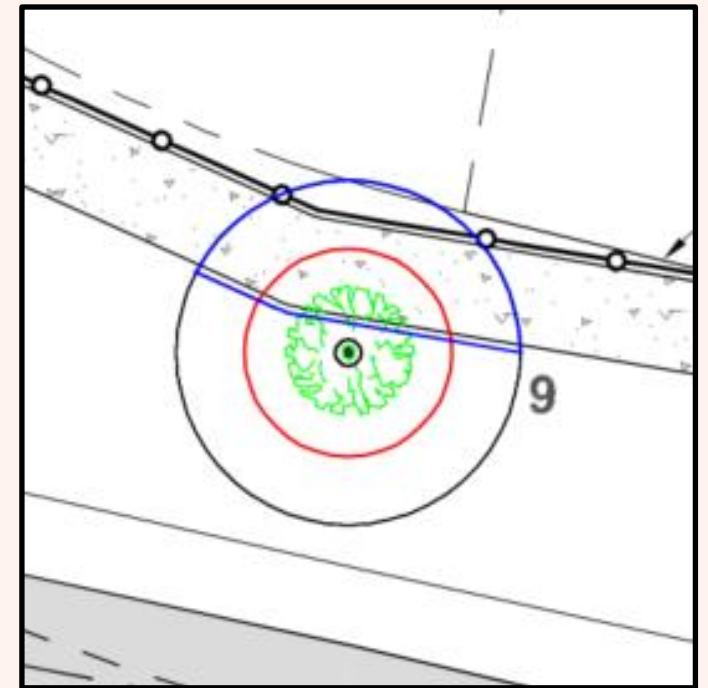
2

2



Tree Details:

- Black Olive (Specimen)
- Fair Condition
- 21-inch diameter
- 23-foot RPZ
- 38% sidewalk (6') impact in RPZ



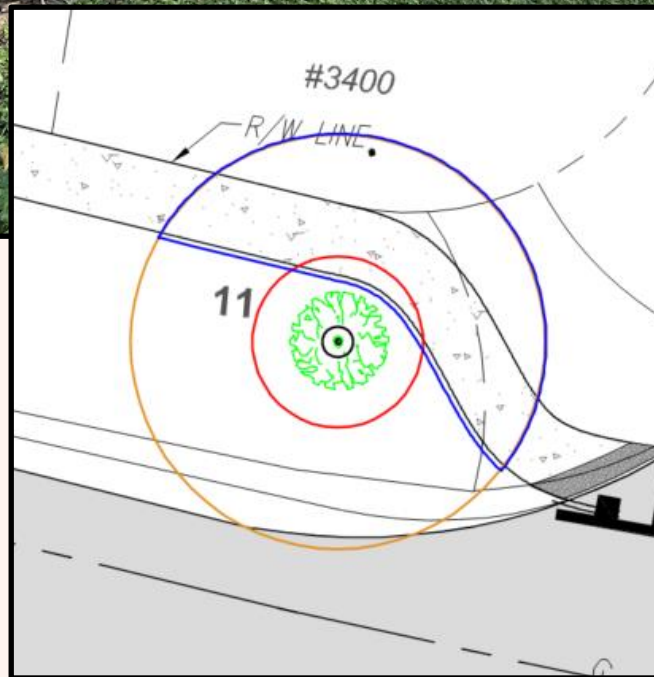
TREE NO. 11

2

2

Tree Details:

- Black Olive (Specimen)
- Good Condition
- 33-inch diameter
- 36-foot RPZ
- 43% sidewalk (6') impact in RPZ
- Driveway approach will need to be relocated as part of the project



TREE NO. 12

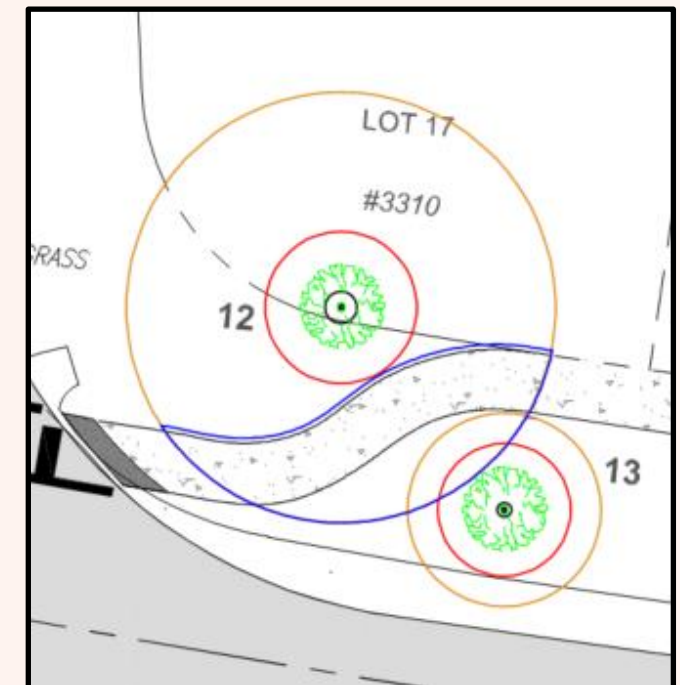
2

2



Tree Details:

- Black Olive (Specimen)
- Good Condition
- 40-inch diameter
- 43-foot RPZ
- 26% sidewalk (6') impact in RPZ
- 23% sidewalk (5') impact in RPZ



TREE NO. 14

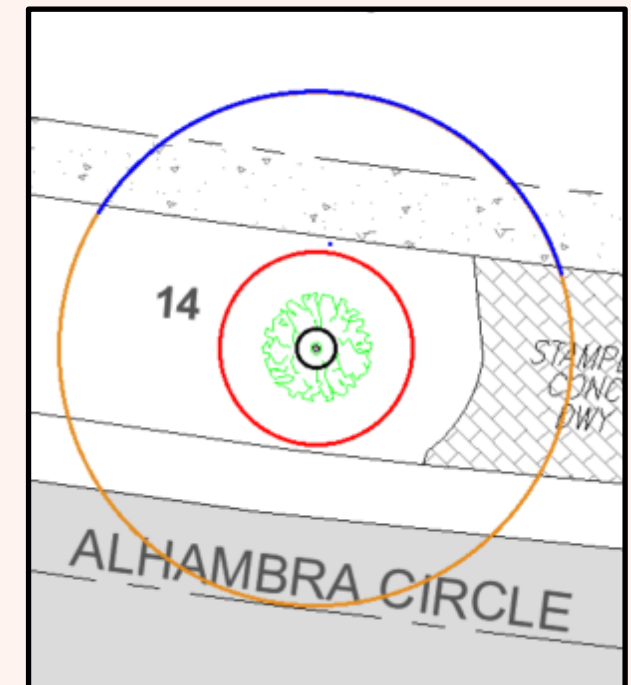
2

2



Tree Details:

- Black Olive (Specimen)
- Fair Condition
- 37-inch diameter
- 40-foot RPZ
- 25% sidewalk (6') impact in RPZ
- 22% sidewalk (5') impact in RPZ



TREE NO. 16

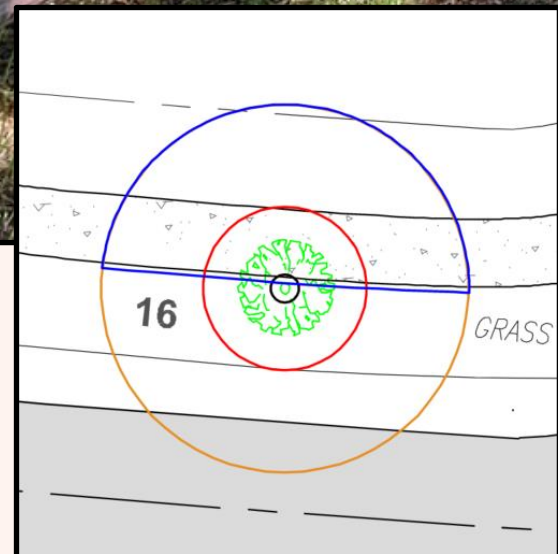
2

2



Tree Details:

- Black Olive (Specimen)
- Poor Condition
- 30-inch diameter
- 33-foot RPZ
- 48% sidewalk (6') impact in RPZ
- Recommend removal and offsetting sidewalk

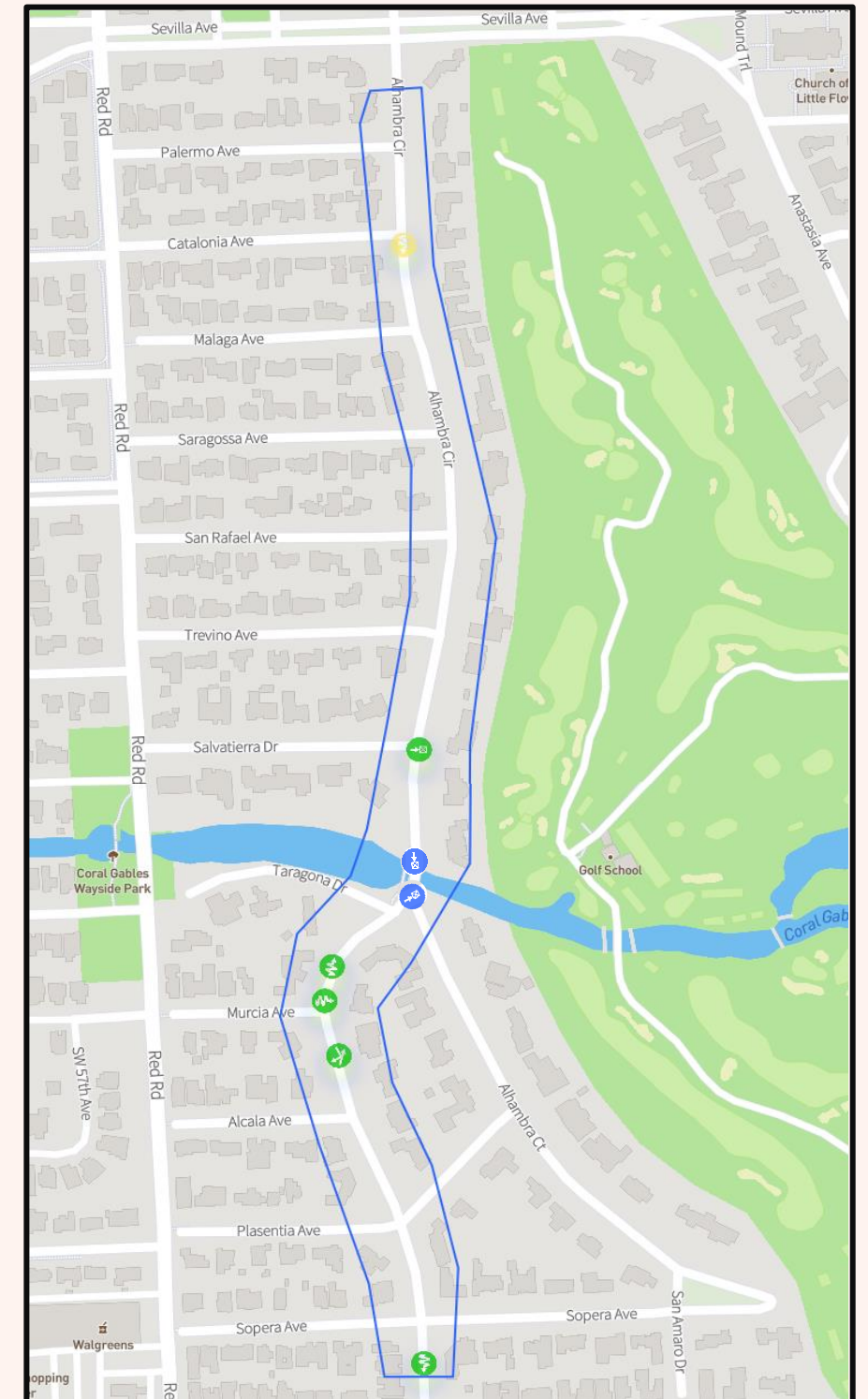


ALHAMBRA CIRCLE CRASH DATA

2

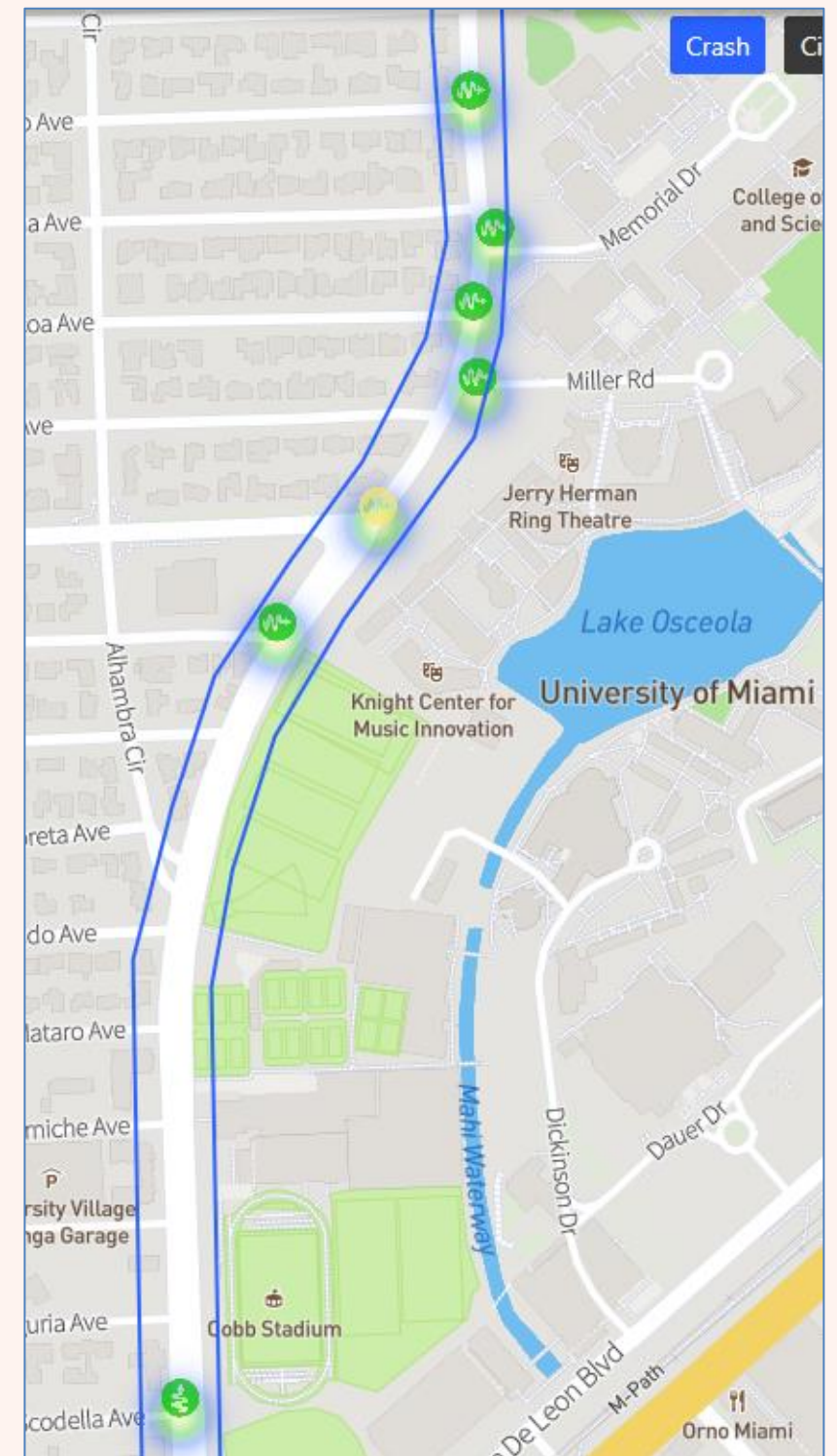
2

- ❖ Historical crash data on Alhambra Circle was reviewed for a three-year period between the dates of January 1, 2021, and December 31, 2023. The limits of the data were from north of Palermo Avenue to south of Sopera Avenue, as shown in the provided map.
- ❖ The data showed that there were a total of eight crashes within the defined time frame.
- ❖ There were no pedestrian or bicycle crashes.
- ❖ There were three injury crashes and zero fatalities.
- ❖ The average daily traffic volume is 4,600 VPD.



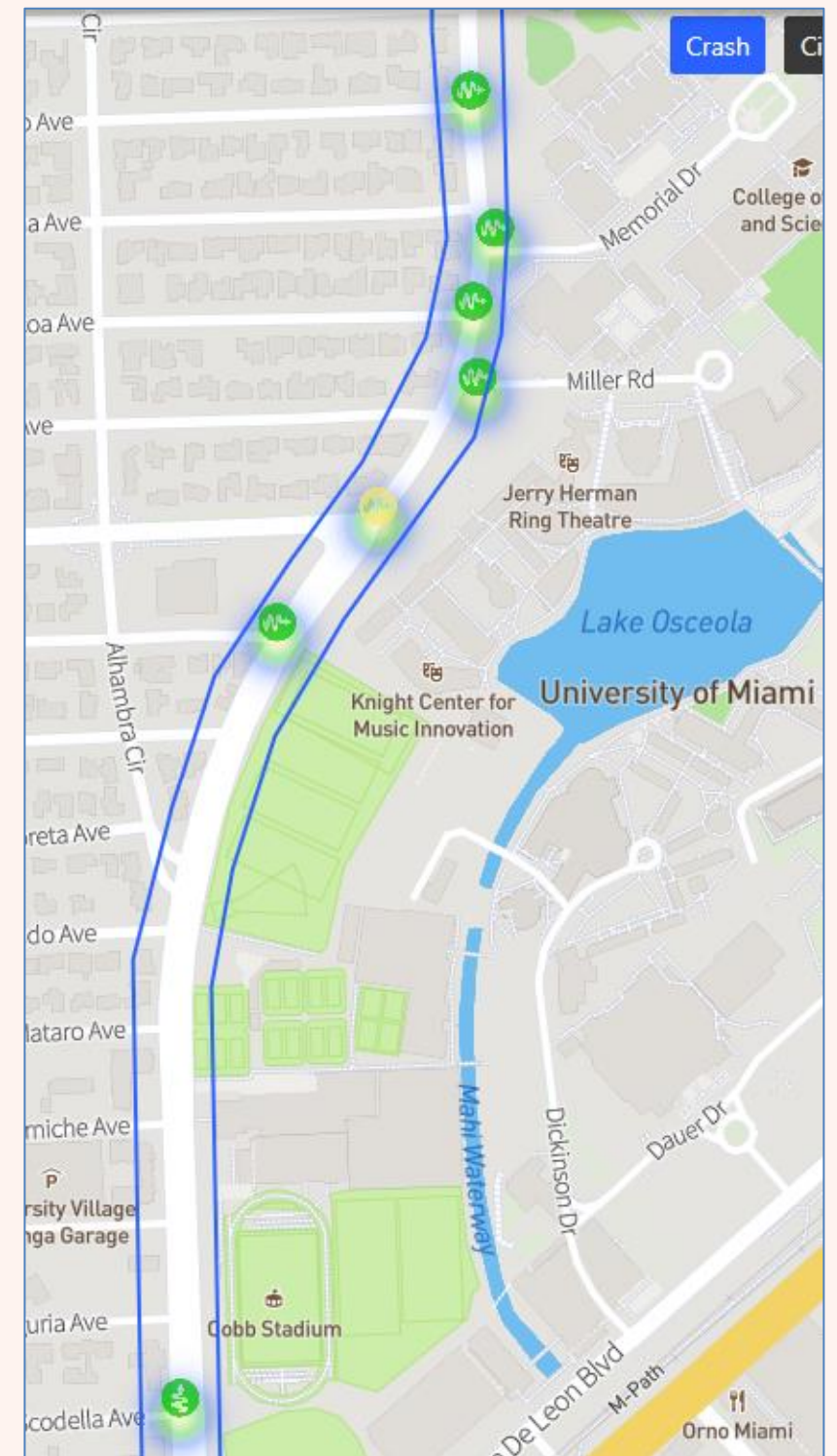
SAN AMARO DRIVE CRASH DATA

- ❖ Historical crash data was also reviewed for San Amaro Drive for the same three-year period between the dates of January 1, 2021, and December 31, 2023. The limits of the data were from north of Certosa Avenue to north of Ponce de Leon Boulevard, as shown in the provided map.
- ❖ The data showed that there were a total of 41 crashes within the defined time frame.
- ❖ There were two pedestrian and two bicycle crashes.
- ❖ There were seven injury crashes and zero fatalities.
- ❖ The average daily traffic volume is 12,000 VPD.



❖ **For the pedestrian and bicycle crashes along San Amaro Drive:**

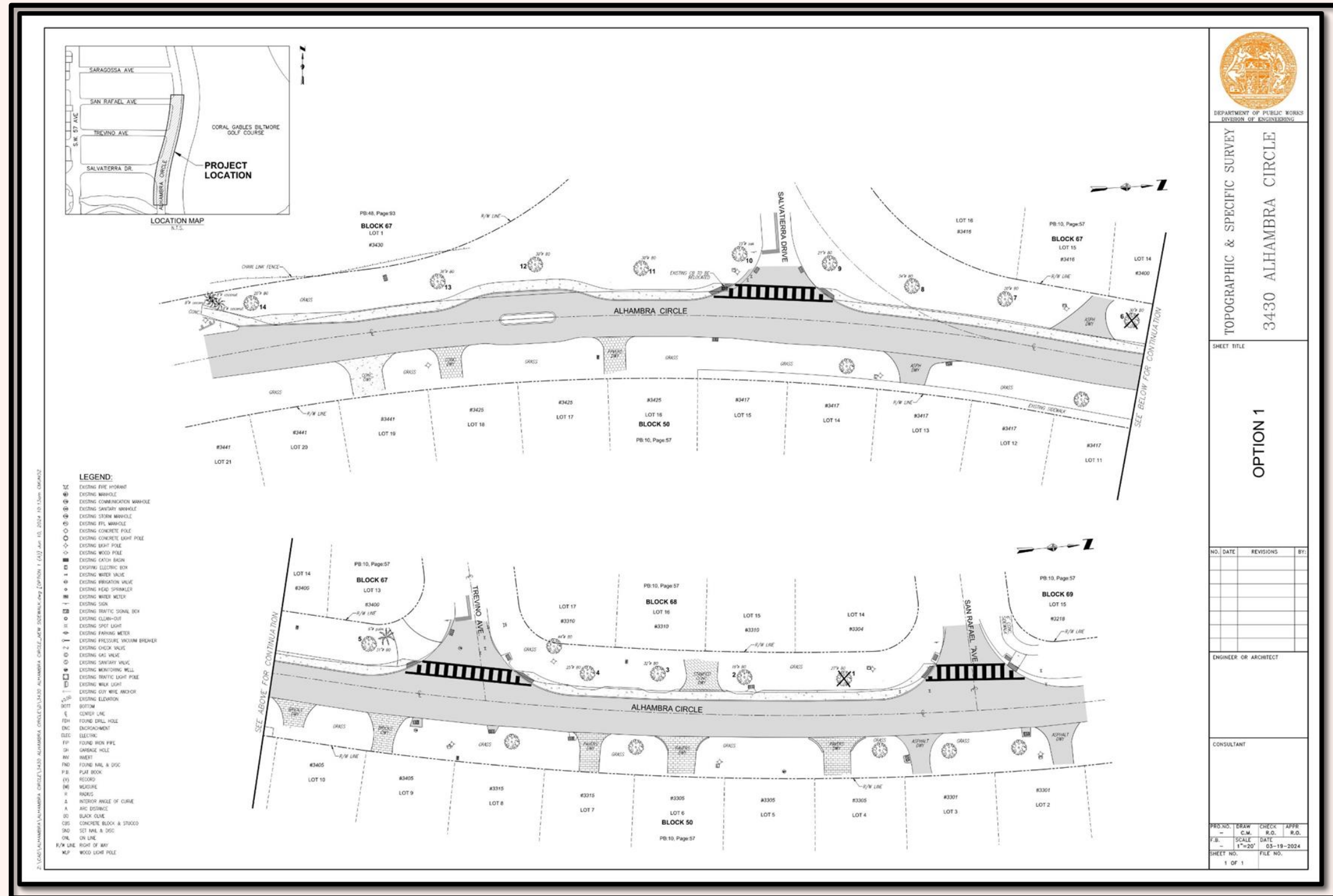
- **Ped Crash 1 - Pedestrian crash occurred in a crosswalk**
- **Ped Crash 2 - Involved a vehicle turning into a driveway where a pedestrian was walking**
- **Bicycle Crash 1 - Involved a car backing into a cyclist in a parking lot**
- **Bicycle Crash 2 – Involved an electric scooter that cut out from behind a bus going through a crosswalk and was subsequently hit by another vehicle**



PLAN VIEW – OPTION 1 (BALLOTTED)

2

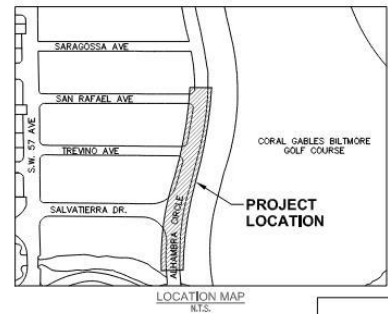
2



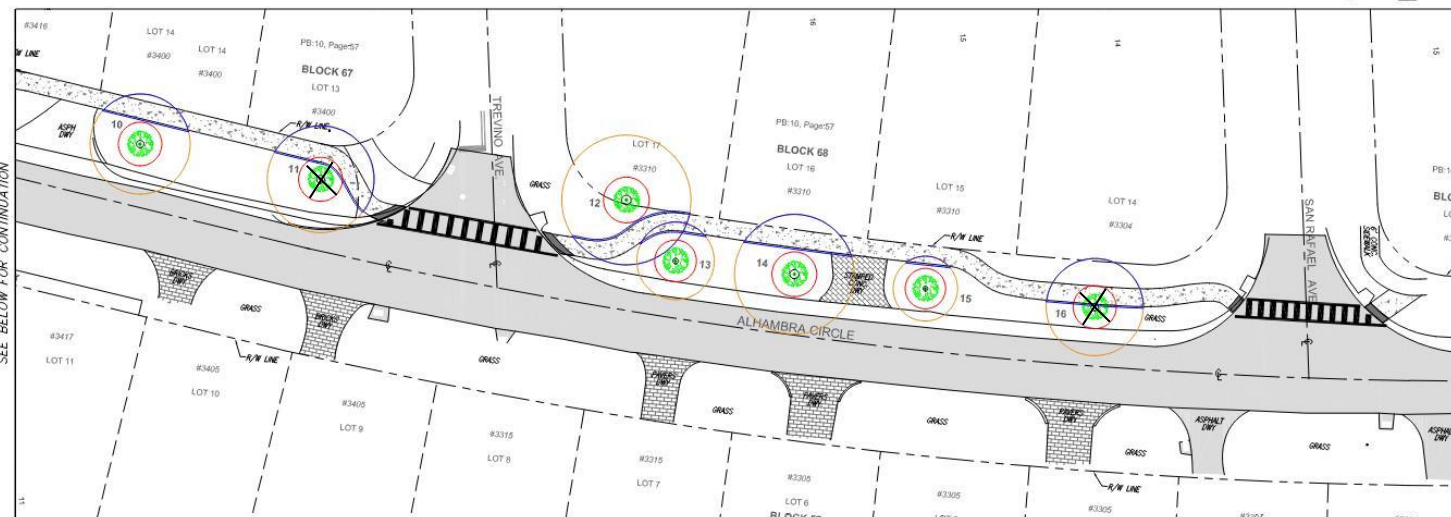
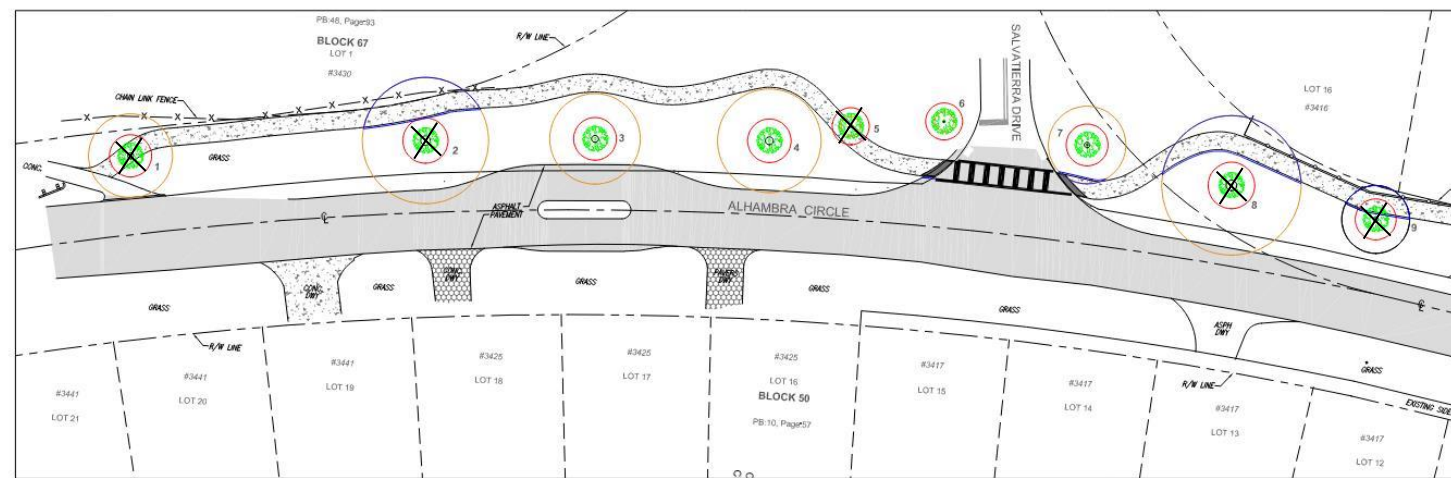
PLAN VIEW – OPTION 3

2

2



LOCATION MAP
N.T.S.



- LEGEND:**
- EXISTING FIRE HYDRANT
 - EXISTING MANHOLE
 - EXISTING COMMUNICATION MANHOLE
 - EXISTING SANITARY MANHOLE
 - EXISTING STORM MANHOLE
 - EXISTING P.T. MANHOLE
 - EXISTING CONCRETE POLE
 - EXISTING CONCRETE LIGHT POLE
 - EXISTING LIGHT POLE
 - EXISTING WOOD POLE
 - EXISTING CATCH BASIN
 - EXISTING ELECTRIC BOX
 - EXISTING WATER VALVE
 - EXISTING IRRIGATION VALVE
 - EXISTING HEAD SPRINKLER
 - EXISTING WATER METER
 - EXISTING SIGN
 - EXISTING TRAFFIC SIGNAL BOX
 - EXISTING CLEAN-OUT
 - EXISTING SPOT LIGHT
 - EXISTING PARKING METER
 - EXISTING PRESSURE VACUUM BREAKER
 - EXISTING CHECK VALVE
 - EXISTING GAS VALVE
 - EXISTING SANITARY VALVE
 - EXISTING MONITORING WELL
 - EXISTING TRAFFIC LIGHT POLE
 - EXISTING WALK LIGHT
 - EXISTING GUY WIRE ANCHOR
 - EXISTING ELEVATION
 - RIGHT
 - LEFT
 - CENTER LINE
 - FOUND DRILL HOLE
 - ENCROACHMENT
 - ELEC
 - FP
 - GH
 - HW
 - IND
 - P.B.
 - PLAT BOOK
 - RECORD
 - MEASURE
 - R
 - INTERIOR ANGLE OF CURVE
 - A
 - ARC DISTANCE
 - BO
 - BLACK OLINE
 - CBS
 - CONCRETE BLOCK & STRUCK
 - SND
 - SET NAIL & DISC
 - ONL
 - ON LINE
 - R/W LINE
 - RIGHT OF WAY
 - WLP
 - WOOD LIGHT POLE



DEPARTMENT OF PUBLIC WORKS
DIVISION OF ENGINEERING

TOPOGRAPHIC & SPECIFIC SURVEY
3430 ALHAMBRA CIRCLE

SHEET TITLE

OPTION 3

NO.	DATE	REVISIONS	BY:

ENGINEER OR ARCHITECT

CONSULTANT

PROJ. NO.	DRAW	CHECK	APPR.

1 OF 1

SUMMARY

2

2

SIDEWALK OPTION	# OF TREES TO BE REMOVED
OPTION 1 (WITH CURB)	2
OPTION 3 (6' SIDEWALK AT ROW LINE)	8
OPTION 3 (MODIFIED)	7

Thank you!

Public Works Department: *Keeping the City Beautiful Yesterday, Today & Tomorrow*

PWDepartment@coralgables.com

**CORAL
GABLES**
THE CITY BEAUTIFUL