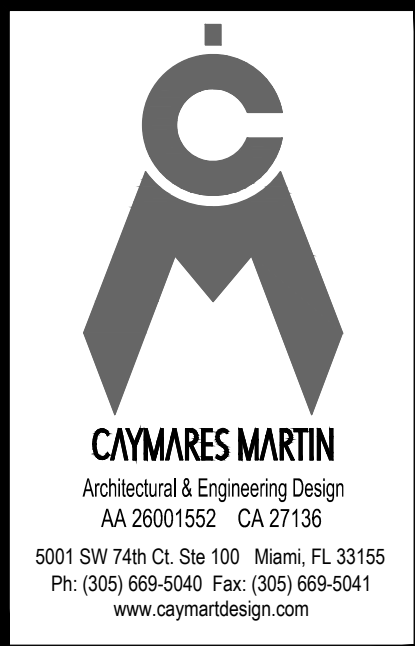


BOABADILLA STREET



PARKING LOT
 PRELIMINARY DESIGN
 760 PONCE DE LEON BLVD
 CITY OF CORAL GABLES, FL 33134

REV. #	DATE
1	
2	
3	
4	
5	
6	

PROJECT No.:	
DESIGNED BY:	O.M.
DRAWN BY:	
CHECKED BY:	O.M.
ISSUE DATE:	
DRAWING SCALE:	AS SHOWN

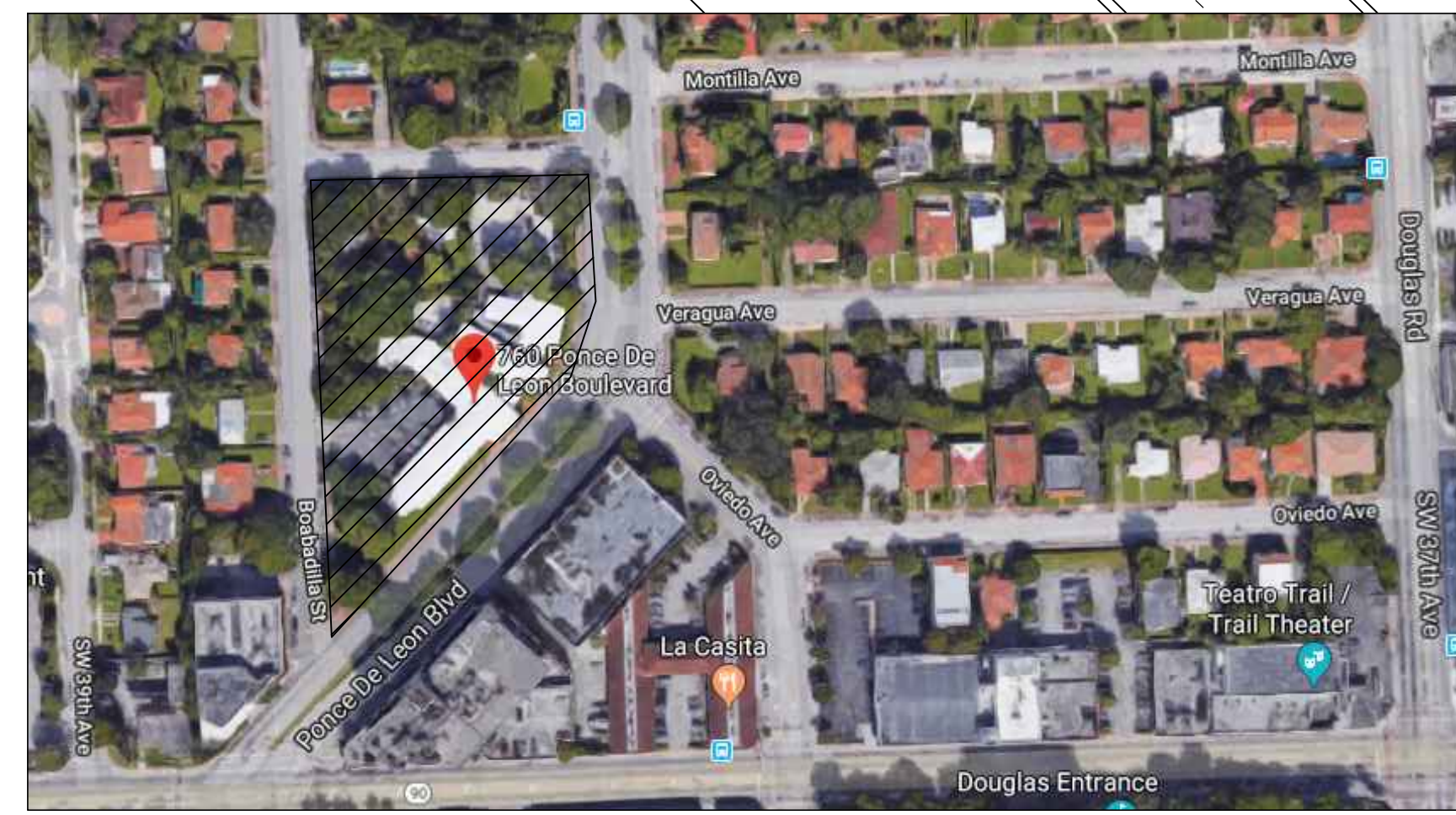
ARCH. CARMEN V. DIAZ
 LIC# AR 96298
 5001 S.W. 74th COURT, #100 MIAMI,
 FL 33155
 TEL: (305) 669-5040
 FAX: (305) 669-5041

OPTION 1
 SHEET:
A-2.1



PARKING COUNT GROUND FL PARKING:

REGULAR PS:	150
HC PS:	5
TOTAL:	155 PS



KEY MAP

PARKING CALCULATION			
EXISTING OFFICE	EXISTING PARKING	PARKING REQUIRED	PARKING PROVIDED
2750 SF	REGULAR PARKING + HC PARKING = PARKING SPACES 22 PS + 2 PS = 24 PS	OFFICE AREA 1 PS / 300 SF 2,750 SF / 300 = TOTAL REQUIRED 58 PS	REGULAR PARKING + HC PARKING = PARKING SPACES 145 PS + 5 PS = 150 PS

NOTE: THIS PRELIMINARY DESIGN IS BASED ON PUBLIC RECORDS. AT THIS MOMENT WE DO NOT KNOW ANY DEDICATION, EASEMENT OR ALLEY IN THE PROPERTIES.

SITE PLAN
 SCALE: 1/16" = 1'-0"

PONCE DE LEON BLVD.

AVILA COURT

PONCE DE LEON BLVD.