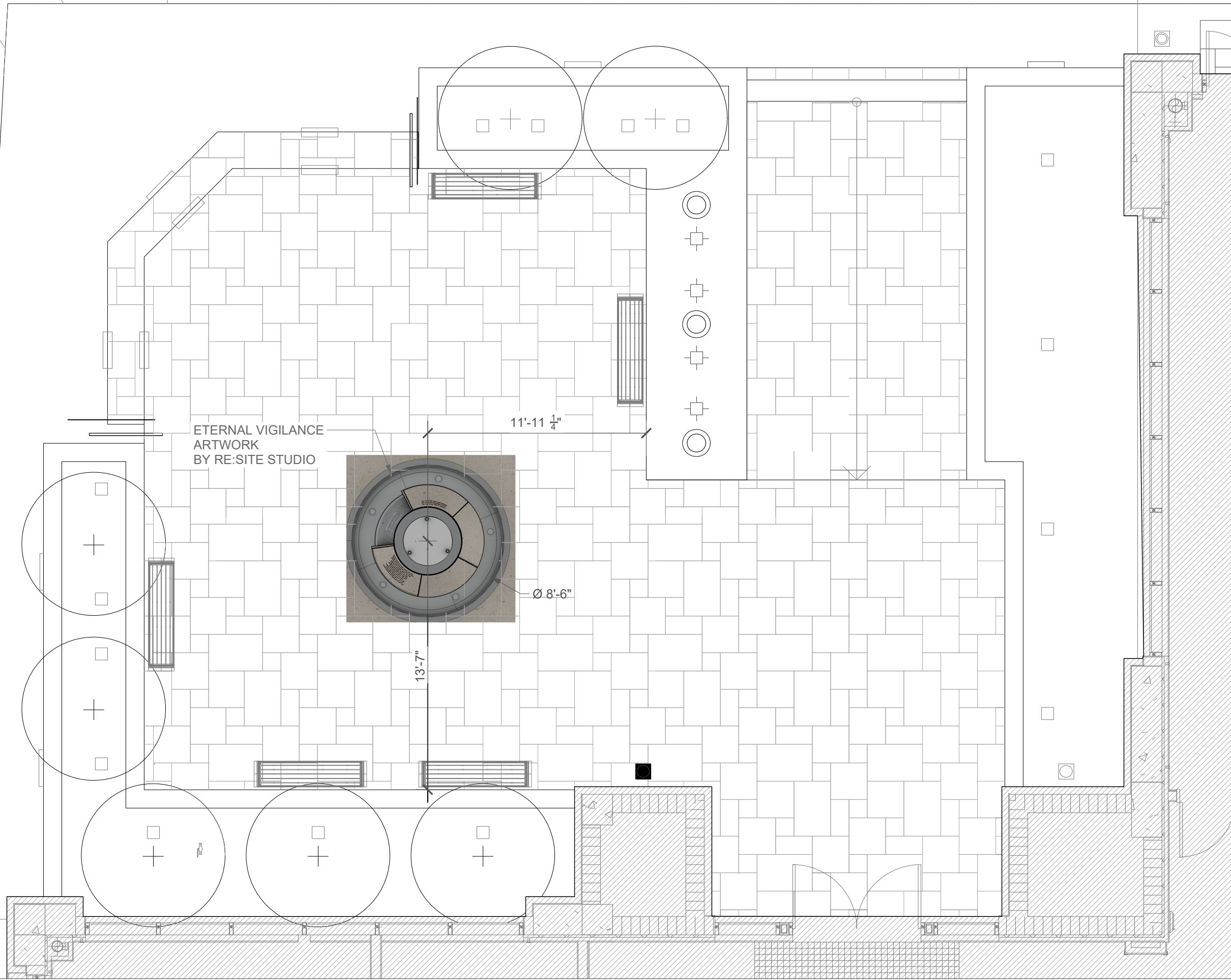


**1 SITE PLAN**  
SCALE: 3/16" = 1' - 0"



NO.	ISSUE	DATE
1	FOR DD REVIEW	23 November 2022
2	FOR FABRICATION	

**ETERNAL VIGILANCE**  
CORAL GABLES, FL

**[METALAB]**  
ARCHITECTURE + DIGITAL FABRICATION  
www.metablabstudio.com  
info@metablabstudio.com

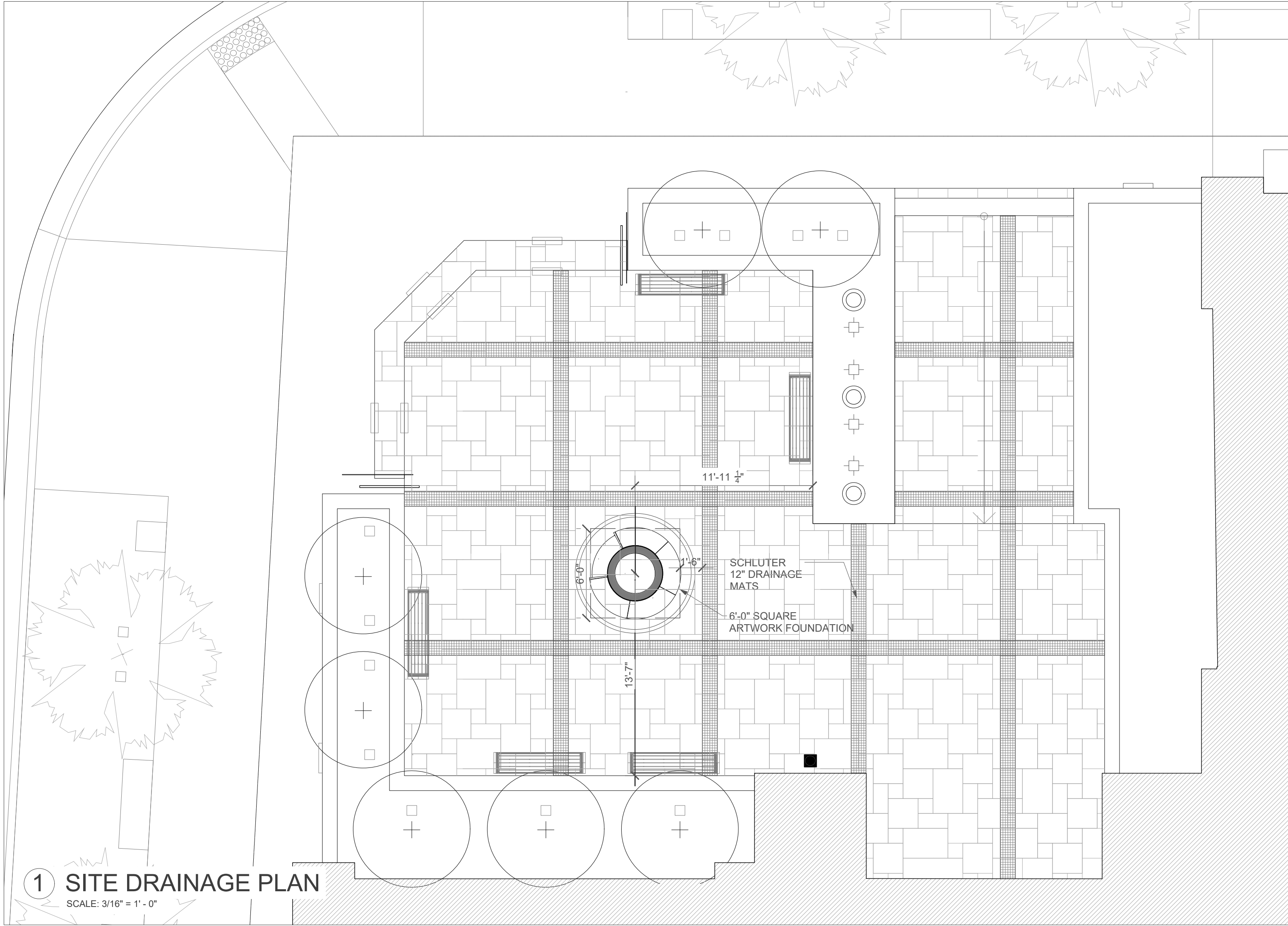
20 N Sampson  
Houston, Texas 77003  
713.426.3640

**A01**

SITE PLAN  
SCALE AS NOTED

**FOR REVIEW**

**A01**



**1 SITE DRAINAGE PLAN**  
 SCALE: 3/16" = 1' - 0"

NO.	ISSUE	DATE
1	FOR DD REVIEW	23 November 2022
2	FOR FABRICATION	

**ETERNAL VIGILANCE**  
 CORAL GABLES, FL

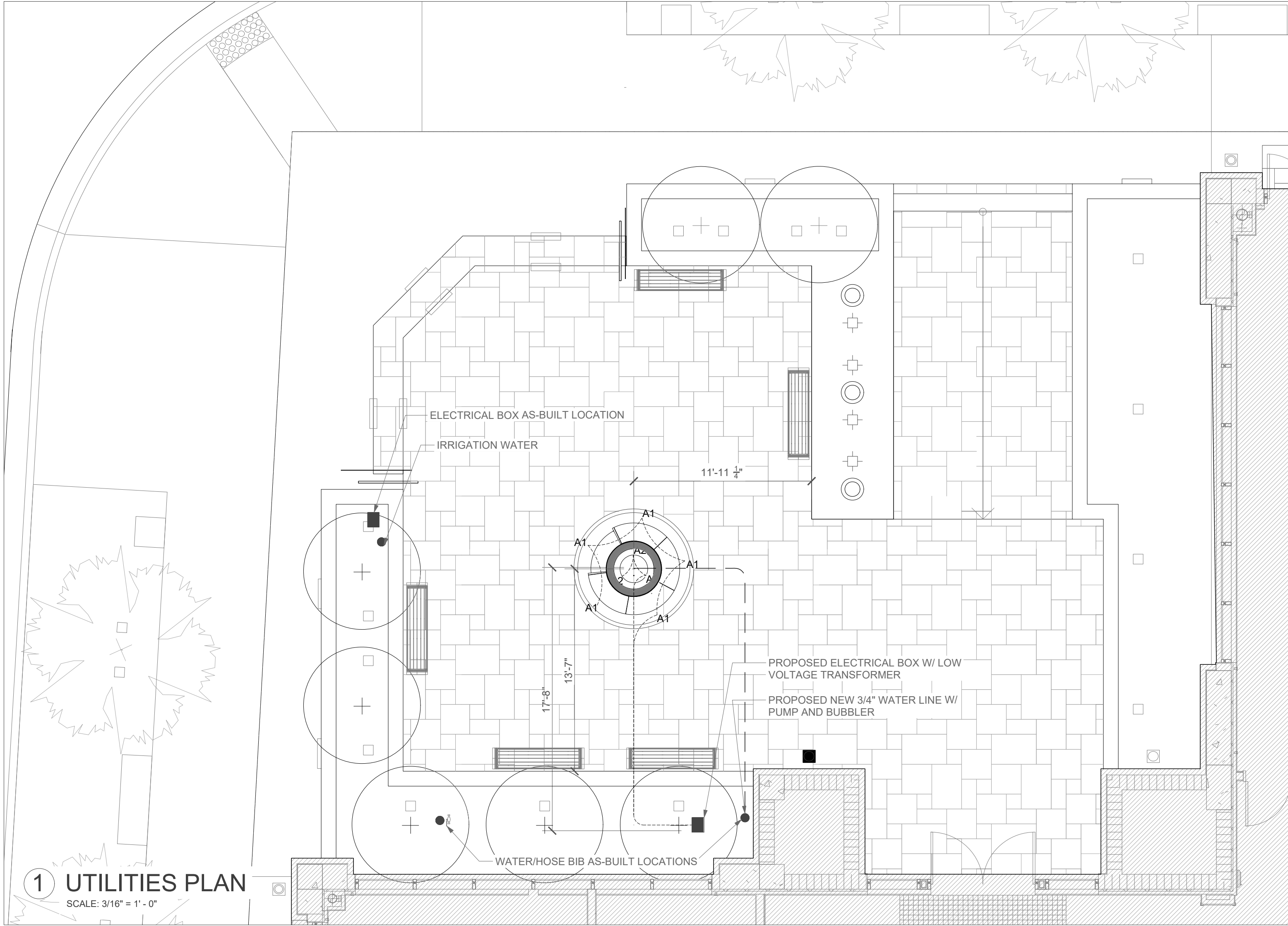
**[METALAB]**  
 ARCHITECTURE + DIGITAL FABRICATION  
 20 N Sampson  
 Houston, Texas 77003  
 713.426.3640  
 www.metablabstudio.com  
 info@metablabstudio.com

**A01.1**

SITE DRAINAGE PLAN  
 SCALE AS NOTED

**FOR REVIEW**

**A01.1**



**1 UTILITIES PLAN**  
 SCALE: 3/16" = 1' - 0"

NO.	ISSUE	DATE
1	FOR DD REVIEW	23 November 2022
2	FOR FABRICATION	

**ETERNAL VIGILANCE**  
 CORAL GABLES, FL

**[METALAB]**  
 ARCHITECTURE + DIGITAL FABRICATION  
 20 N Sampson  
 Houston, Texas 77003  
 713.426.3640  
 www.metablabstudio.com  
 info@metablabstudio.com

**A01.2**

UTILITIES PLAN  
 SCALE AS NOTED

**FOR REVIEW**

**A01.2**

GRANITE STONE

LIMESTONE

STAINLESS STEEL & GLASS  
FLAME SCULPTURE

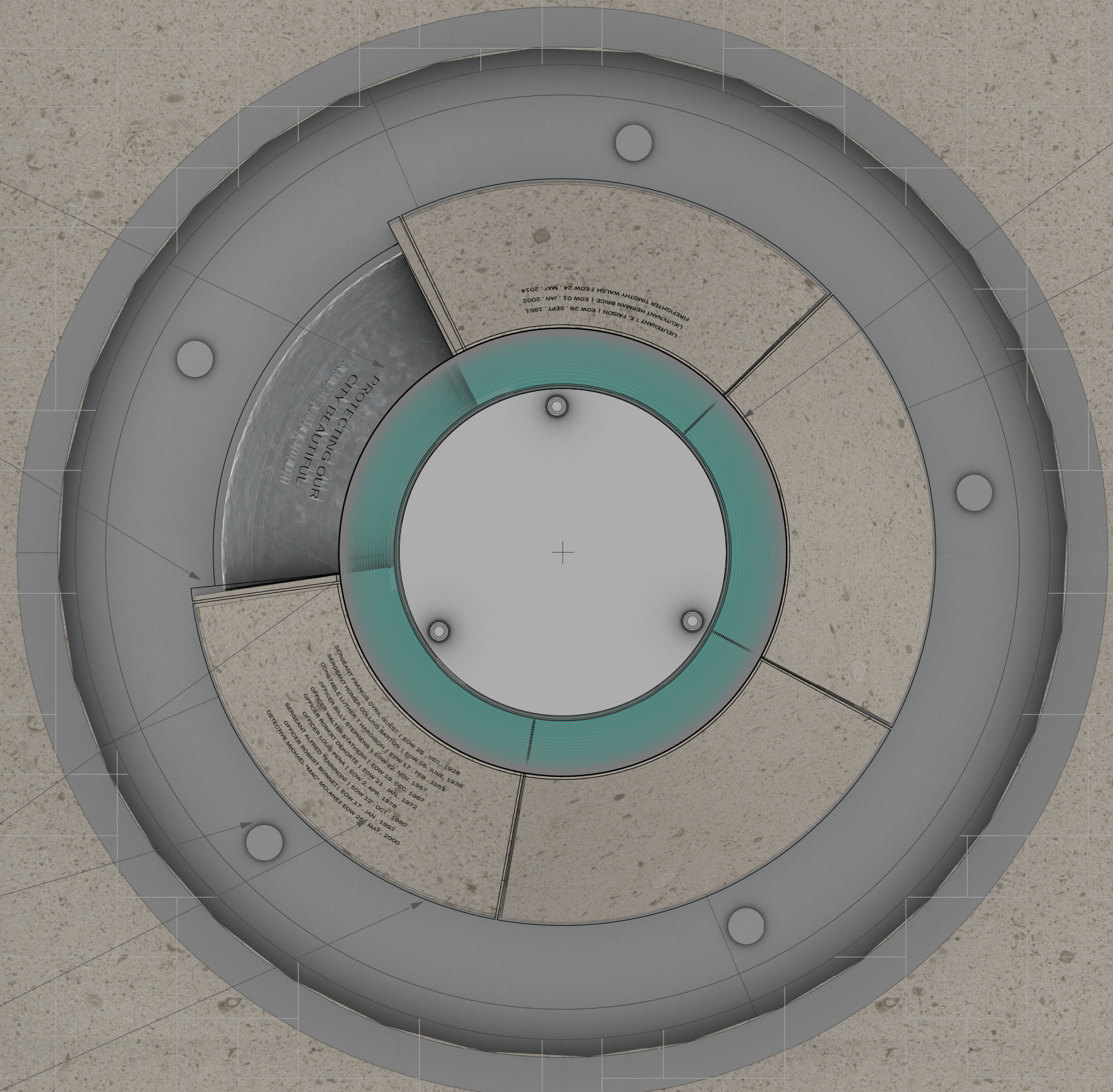
(5) UPLIGHTS;  
ONE PER PLINTH SECTION FOR  
ILLUMINATION OF EMBLEMS/NAMES

(2) LIMESTONE BLOCKS WITH  
ENGRAVED OFFICER NAMES

(4) LIMESTONE BLOCKS WITH  
ENGRAVED EMBLEM LEAVEOUTS

Ø3'-8"

Ø8'-0"



**1 ENLARGED PLAN**  
SCALE: 1" = 1'-0"

NO.	ISSUE	DATE
1	FOR DD REVIEW	23 November 2022
2	FOR FABRICATION	

**ETERNAL VIGILANCE**  
CORAL GABLES, FL

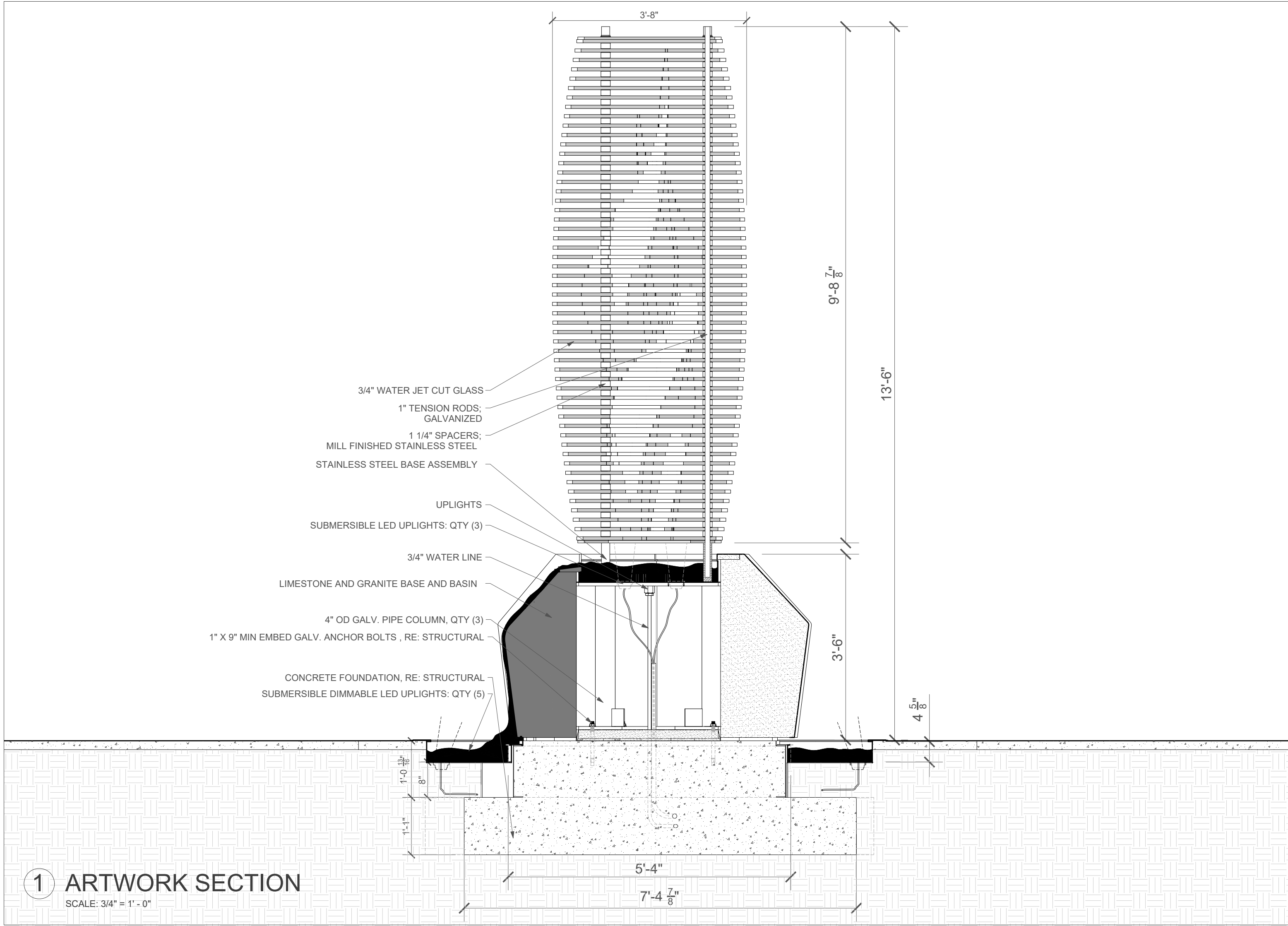
**[METALAB]**  
ARCHITECTURE + DIGITAL FABRICATION  
20 N Sampson  
Houston, Texas 77003  
713.426.3640  
www.metablabstudio.com  
info@metablabstudio.com

**A01**

ENLARGED PLAN  
SCALE AS NOTED

**FOR REVIEW**

**A02**



- 3/4" WATER JET CUT GLASS
- 1" TENSION RODS;  
GALVANIZED
- 1 1/4" SPACERS;  
MILL FINISHED STAINLESS STEEL
- STAINLESS STEEL BASE ASSEMBLY
- UPLIGHTS
- SUBMERSIBLE LED UPLIGHTS: QTY (3)
- 3/4" WATER LINE
- LIMESTONE AND GRANITE BASE AND BASIN
- 4" OD GALV. PIPE COLUMN, QTY (3)
- 1" X 9" MIN EMBED GALV. ANCHOR BOLTS , RE: STRUCTURAL
- CONCRETE FOUNDATION, RE: STRUCTURAL
- SUBMERSIBLE DIMMABLE LED UPLIGHTS: QTY (5)

**1 ARTWORK SECTION**  
SCALE: 3/4" = 1' - 0"

NO.	ISSUE	DATE
1	FOR DD REVIEW	23 November 2022
2	FOR FABRICATION	

**ETERNAL VIGILANCE**  
CORAL GABLES, FL

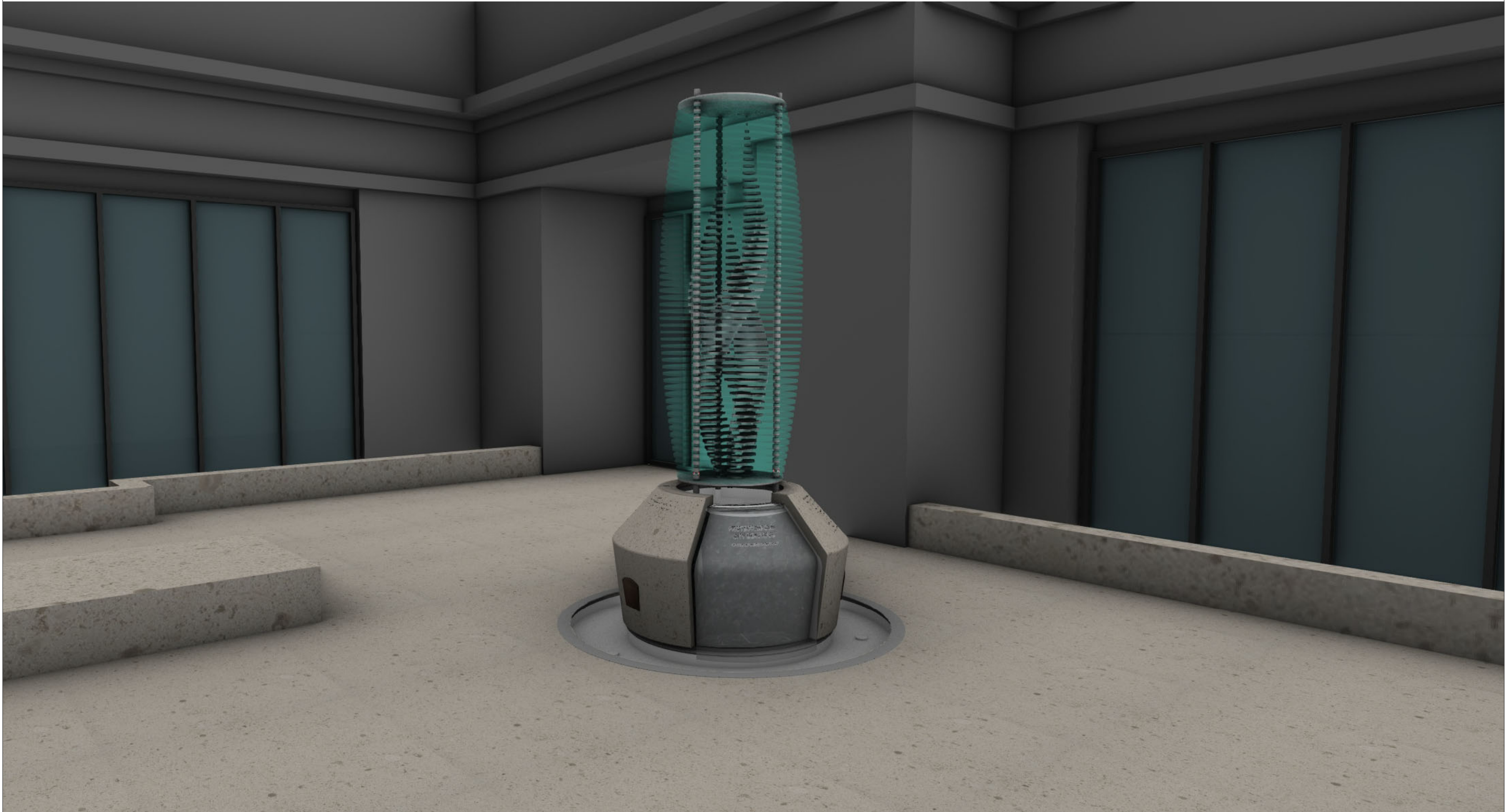
**[METALAB]**  
ARCHITECTURE + DIGITAL FABRICATION  
www.metalabstudio.com  
info@metalabstudio.com  
20 N Sampson  
Houston, Texas 77003  
713.426.3640

**A04**

ARTWORK SECTION  
SCALE AS NOTED

**FOR REVIEW**

**A04**



1 ARTWORK RENDERING: VIEW NE  
SCALE: NTS

NO.	ISSUE	DATE
1	FOR DD REVIEW	23 November 2022
2	FOR FABRICATION	

ETERNAL VIGILANCE  
CORAL GABLES, FL

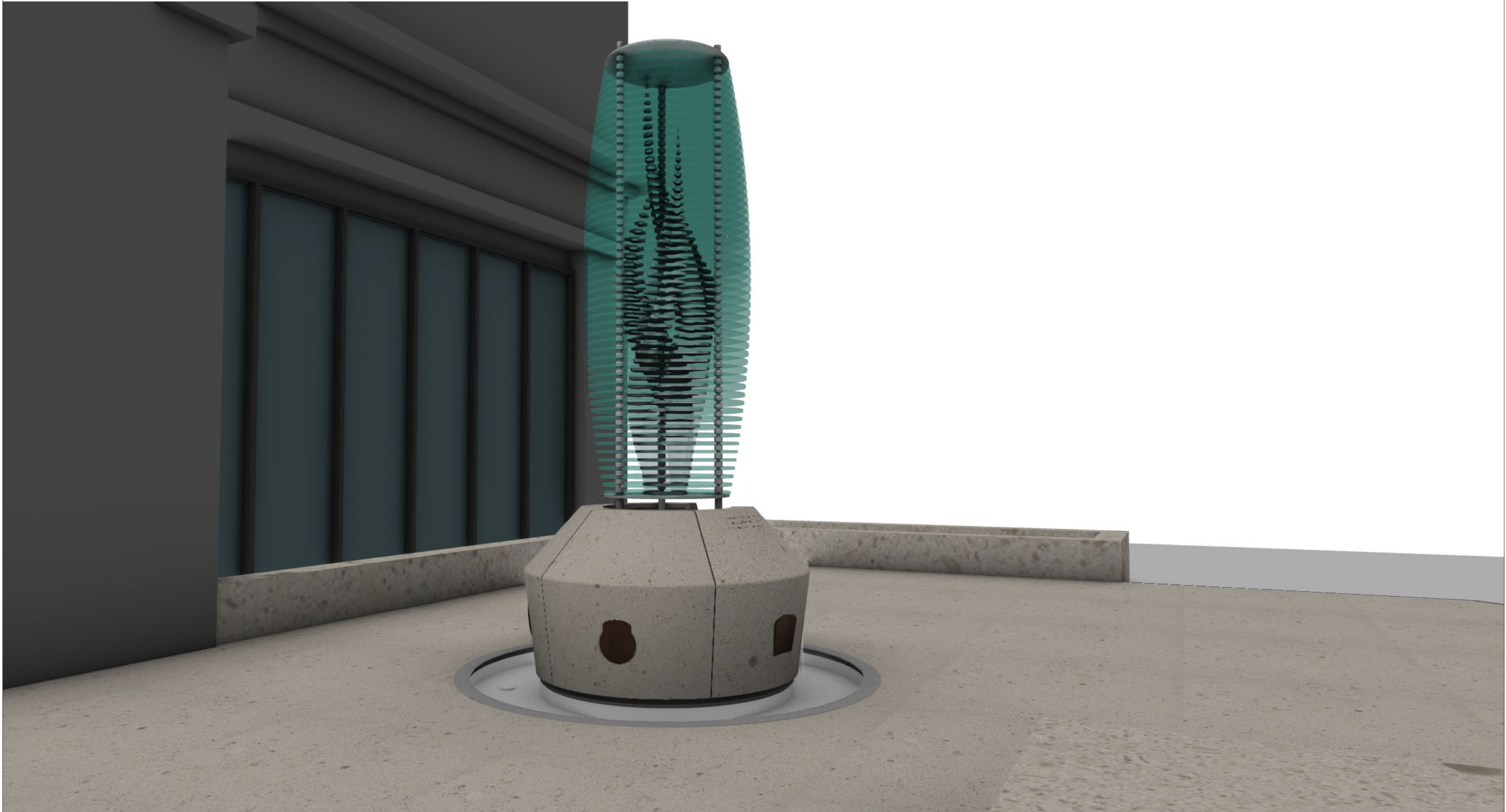
**[METALAB]**  
ARCHITECTURE + DIGITAL FABRICATION  
20 N Sampson  
Houston, Texas 77003  
713.426.3640  
www.metalabstudio.com  
info@metalabstudio.com

A05

ARTWORK RENDERING  
SCALE AS NOTED

FOR REVIEW

A05



1 ARTWORK RENDERING: VIEW LOOKING SE  
 SCALE: 3/4" = 1' - 0"

NO.	ISSUE	DATE
1	FOR DD REVIEW	23 November 2022
2	FOR FABRICATION	

**ETERNAL VIGILANCE**  
 CORAL GABLES, FL

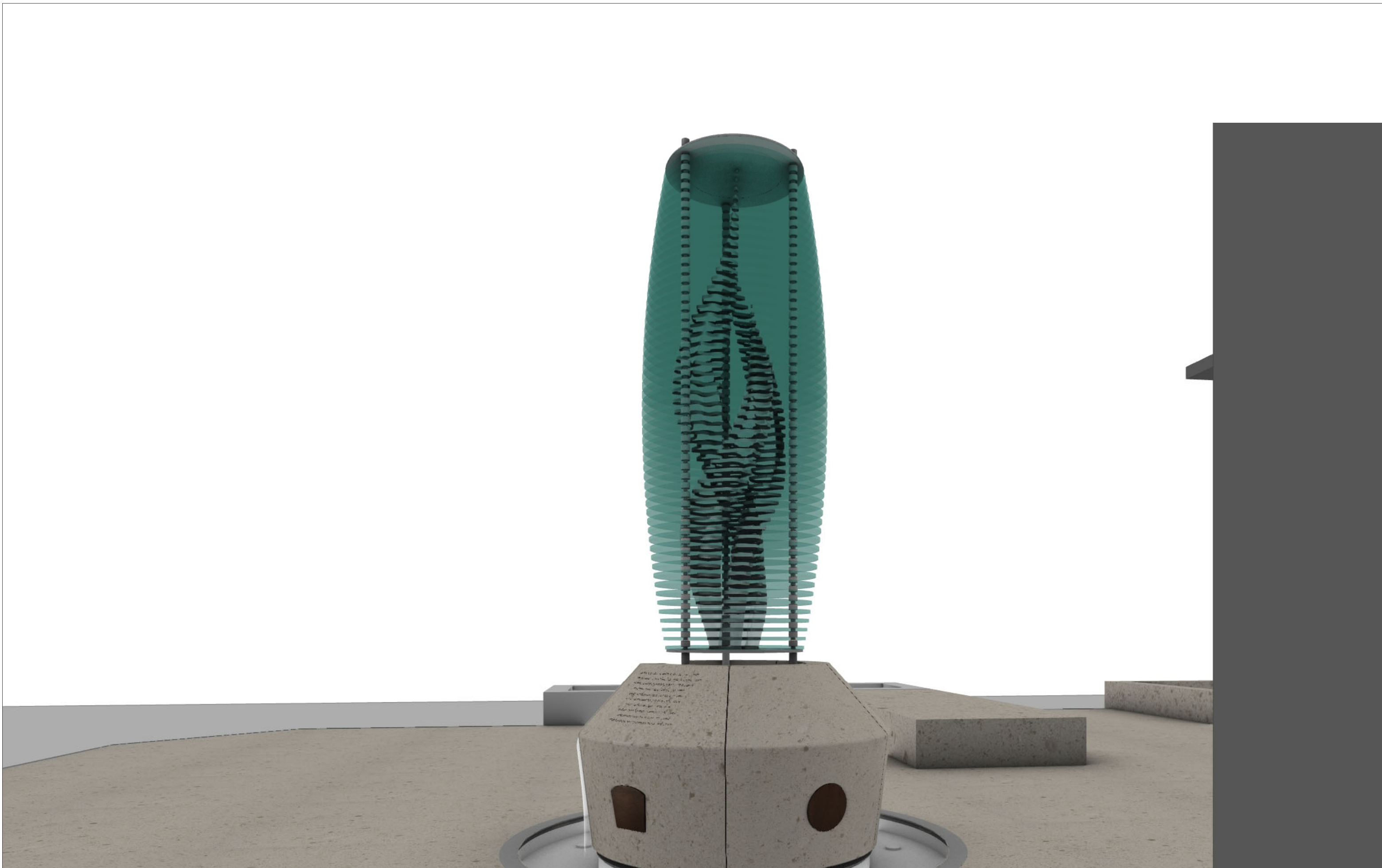
**[METALAB]**  
 ARCHITECTURE + DIGITAL FABRICATION  
 20 N Sampson  
 Houston, Texas 77003  
 713.426.3640  
 www.metabolabstudio.com  
 info@metabolabstudio.com

A06

ARTWORK RENDERING  
 SCALE AS NOTED

**FOR REVIEW**

A06



1 ARTWORK RENDERING: VIEW LOOKING NW  
SCALE: NTS

NO.	ISSUE	DATE
1	FOR DD REVIEW	23 November 2022
2	FOR FABRICATION	

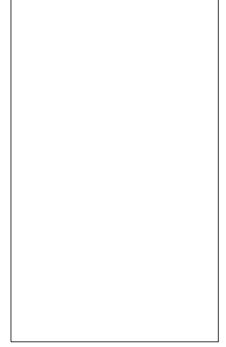
ETERNAL VIGILANCE  
CORAL GABLES, FL

**[METALAB]** ARCHITECTURE + DIGITAL FABRICATION  
20 N Sampson Houston, Texas 77003  
713.426.3640  
www.metalabstudio.com  
info@metalabstudio.com

A07

ARTWORK RENDERING  
SCALE AS NOTED

FOR REVIEW



A07





BRONZE EMBLEM IN  
DARKENED PATINA



1 LIMESTONE PLINTHS: PLINTH 1 - POLICE DEPT FALLEN OFFICER NAMES WITH EMBLEM  
SCALE: NTS

NO.	ISSUE	DATE
1	FOR DD REVIEW	23 November 2022
2	FOR FABRICATION	

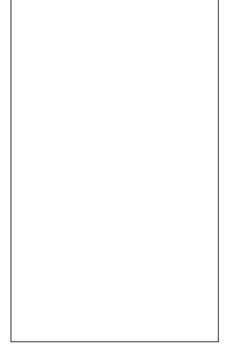
ETERNAL VIGILANCE  
CORAL GABLES, FL

**[METALAB]**  
ARCHITECTURE + DIGITAL FABRICATION  
20 N Sampson  
Houston, Texas 77003  
713.426.3640  
www.metalabstudio.com  
info@metalabstudio.com

A08

LIMESTONE PLINTHS  
SCALE AS NOTED

FOR REVIEW



A08



BRONZE EMBLEM IN  
DARKENED PATINA



**1** LIMESTONE PLINTHS: PLINTH 2 - CITY OF CORAL GABLES EMBLEM  
SCALE: NTS

NO.	ISSUE	DATE
1	FOR DD REVIEW	23 November 2022
2	FOR FABRICATION	

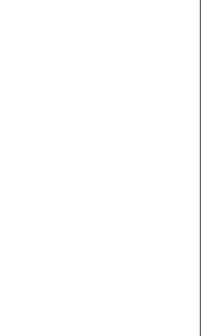
**ETERNAL VIGILANCE**  
CORAL GABLES, FL

**[METALAB]**  
ARCHITECTURE + DIGITAL FABRICATION  
20 N Sampson  
Houston, Texas 77003  
713.426.3640  
www.metalabstudio.com  
info@metalabstudio.com

**A09**

LIMESTONE PLINTHS  
SCALE AS NOTED

**FOR REVIEW**



**A09**



BRONZE EMBLEM IN DARKENED PATINA



**1** LIMESTONE PLINTHS: PLINTH 3 - COMM. CENTER EMBLEM  
SCALE: NTS

NO.	ISSUE	DATE
1	FOR DD REVIEW	23 November 2022
2	FOR FABRICATION	

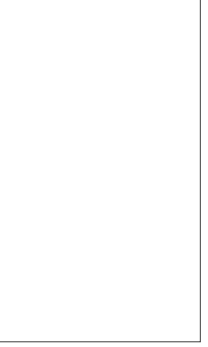
**ETERNAL VIGILANCE**  
CORAL GABLES, FL

**[METALAB]** ARCHITECTURE + DIGITAL FABRICATION  
20 N Sampson Houston, Texas 77003  
713.426.3640  
www.metalabstudio.com  
info@metalabstudio.com

**A10**

LIMESTONE PLINTHS  
SCALE AS NOTED

**FOR REVIEW**



**A10**



BRONZE EMBLEM IN  
DARKENED PATINA



**1** LIMESTONE PLINTHS: PLINTH 3 - FIRE DEPT. FALLEN OFFICER NAMES WITH EMBLEM  
SCALE: NTS

NO.	ISSUE	DATE
1	FOR DD REVIEW	23 November 2022
2	FOR FABRICATION	

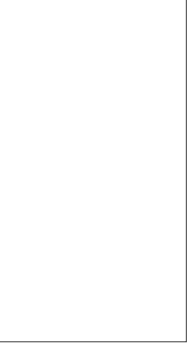
**ETERNAL VIGILANCE**  
CORAL GABLES, FL

**[METALAB]**  
ARCHITECTURE + DIGITAL FABRICATION  
20 N Sampson  
Houston, Texas 77003  
713.426.3640  
www.metalabstudio.com  
info@metalabstudio.com

**A11**

LIMESTONE PLINTHS  
SCALE AS NOTED

**FOR REVIEW**



**A11**

**1 GRANITE PLINTH**  
SCALE: NTS



A12



FOR REVIEW

A12

ETERNAL VIGILANCE  
CORAL GABLES, FL

**[METALAB]**  
ARCHITECTURE + DIGITAL FABRICATION  
20 N Sampson  
Houston, Texas 77003  
713.426.3640  
www.metalabstudio.com  
info@metalabstudio.com

NO.	ISSUE	DATE
1	FOR DD REVIEW	23 November 2022
2	FOR FABRICATION	

# ReSITE

## ETERNAL VIGILANCE | CORAL GABLES PUBLIC SAFETY MEMORIAL

CORAL GABLES FLORIDA

### PROJECT BUDGET

November 22, 2022

### ORIGINAL SCOPE

DESCRIPTION	VENDOR	CONTROL ESTIMATE	CURRENT ESTIMATE - 11/22
<b>ARTIST FEE</b>	ReSite	\$90,000	\$90,000
<b>DESIGN AND DOCUMENTATION</b>	METALAB	\$36,000	\$36,000
<b>PROJECT MANAGEMENT</b>	METALAB	\$64,800	\$64,800
<b>STRUCTURAL ENGINEERING</b>	Lysaght and Associates	\$7,500	\$7,000
<b>3/4" GLASS FLAME SECTIONS</b> Materials & Fabrication	Meltdown Art Glass & Design	\$60,000	\$71,316
<b>STONE PLINTH</b> Materials & Fabrication	Quarra Stone	\$65,000	\$57,152
<b>STEEL SUBSTRUCTURE</b> Materials & Fabrication	FDF	\$0	\$20,000
<b>STEEL SUBSTRUCTURE</b> Stainless Steel Assembly for Structure, Fountain Basins	Merge Studios	\$0	\$10,850
<b>PROTOTYPE</b> Prototype of 3-4 discs with non-certified load testing at Meltdown	Meltdown Art Glass & Design	\$0	\$5,000
<b>PLAZA &amp; FLATWORK</b> FOUNDATION / SITE PREP	TBD	\$55,000	\$20,000
<b>PLUMBING &amp; ELECTRICAL</b>	TBD	\$20,000	\$13,000
<b>LIGHTING</b> 3 non-dimmable LED uplights	Aspect LED Lighting	\$0	\$800
<b>HARDWARE / MISC.</b>	TBD	\$3,500	\$3,500
<b>SHIPPING &amp; TRANSPORTATION</b> Misc Parts Shipment - Stainless Assemblies Meltdown Crating and Shipping	TBD	\$6,000	\$4,000 \$11,890
<b>ASSEMBLY / INSTALLATION</b> 5 DAY, 3 PERSON INSTALL	Merge Studios	\$25,000	\$28,000
<b>TRAVEL</b>	TBD	\$7,500	\$4,000
	<b>FABRICATION COST</b>	<b>\$432,800</b>	<b>\$453,308</b>
	Contingency	\$17,200	-\$3,308
	<b>PROJECT BUDGET</b>	<b>\$450,000</b>	<b>\$450,000</b>

### ADDED SCOPE

<b>FABRICATION/MODIFICATIONS FOR ELECTRICAL</b> Pool Basin Modifications for (5) fixtures; conduit	TBD	\$0	\$12,000
<b>NEMA ENCLOSURE</b> Temperature Controlled Enclosure	Anxiter	\$0	\$4,000
<b>LIGHTING</b> 5 Underwater/Fountain Lights	Aspect LED Lighting	\$0	\$4,000
<b>LIGHTING CONTROLS</b> Lighting Control Box for Dimmable Submersible Light Fixtures	Aspect LED Lighting	\$0	\$10,000
<b>STONE PLINTH EMBLEM ENGRAVING</b> (4) Engraving Leaveouts for Emblems	Quarra Stone	\$0	\$5,000
<b>HURRICANE PROTECTION</b> Sewn Reinforced Vinyl Sleeve, Zippered, with Foam-Padded Interior	Connect	\$0	\$3,500
<b>BRONZE EMBLEMS</b> (4) Bronze Emblems, Adhered to Stone Plinth	Metal Art Design	\$0	\$8,500
<b>ARTIST FEE</b> Bronze Emblem Design + Coordination	ReSite	\$0	\$3,000
<b>DESIGN AND PROJECT MANAGEMENT</b>	METALAB	\$0	\$8,000
	Contingency	\$0	\$17,500
	<b>ADD. FUNDS REQUESTED</b>	<b>\$0</b>	<b>\$75,500</b>

<b>PROPOSED PROJECT BUDGET</b>	<b>\$525,500</b>
--------------------------------	------------------

# ReSite

ETERNAL VIGILANCE | CORAL GABLES PUBLIC SAFETY MEMORIAL

CORAL GABLES FLORIDA

CURRENT SCHEDULE

November 23, 2022

DESCRIPTION	VENDOR	October-22					November-22				December-22				January-23				February-23				March-23						
		10/3	10/10	10/17	10/24	10/31	11/7	11/14	11/21	11/28	12/5	12/12	12/19	12/26	1/2	1/9	1/16	1/23	1/30	2/6	2/13	2/20	2/27	3/6	3/13	3/20	3/27		
<b>Design Development</b> Structural Engineering Coordination, Detailed Pricing	Metalab	[Yellow Bar]																											
<b>Fabrication Documents</b> Construction Documentation, Permitting	Metalab										[Yellow Bar]																		
<b>Fabrication / Assembly</b> Glass	Meltdown Art Glass						[Orange Bar]				[Orange Bar]				[Orange Bar]														
Stone and Steel	Quarra Stone /FDF						[Orange Bar]				[Orange Bar]																		
<b>Site Work</b> Foundation, Flatwork	TCE										[Green Bar]																		
Electrical	TBD										[Green Bar]				[Green Bar]														
Plumbing	TBD										[Green Bar]				[Green Bar]														
<b>Shipping</b>	TBD														[Pink Bar]														
<b>Onsite Assembly and Installation</b>	TBD														[Purple Bar]														
<b>Punch List / Commissioning</b>	Metalab														[Blue Bar]														
<b>Project Management</b>	Metalab	[Grey Bar]																											

DESIGN WORK
OFF SITE WORK / FABRICATION
ON SITE WORK / PREPARATION
SHIPPING
ON SITE ASSEMBLY
PUNCHLIST / COMMISSIONING

PROPOSED BUDGET INCREASE REVIEW: DECEMBER 13TH	FINAL DESIGN/CONSTRUCTION DOCUMENTS SUBMISSION: DECEMBER 20TH	PERMITTING SUBMISSION: DECEMBER 31ST	PERMITTING COMPLETE: FEBRUARY 14TH
--	---	--------------------------------------	------------------------------------