

Prepared By:
AFA & COMPANY, INC.
PROFESSIONAL LAND SURVEYORS AND MAPPERS
FLORIDA CERTIFICATE OF AUTHORIZATION No. LB 7498
13050 SW 133RD COURT,
MIAMI, FLORIDA 33186
E-MAIL: AFACO@BELLSOUTH.NET
TEL: (305) 234-0588
FAX: 206-495-0778

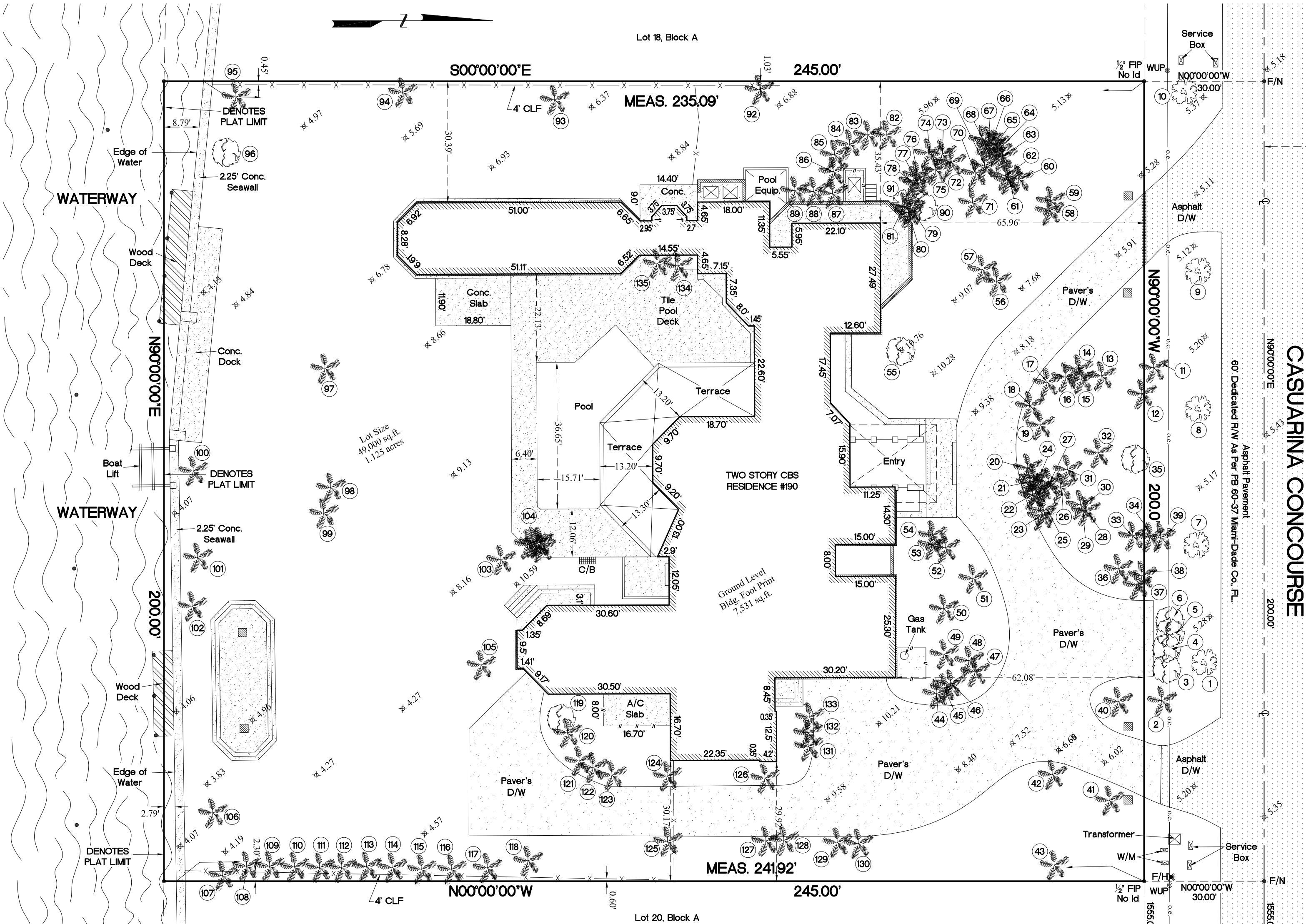
TREE LEGEND:

1. Oak D=2', H=15', SP=10'
2. Palm D=18', H=8', SP=6'
3. Tree D=12', H=12', SP=8'
4. Tree D=12', H=12', SP=8'
5. Tree D=12', H=12', SP=8'
6. Tree D=12', H=12', SP=8'
7. Oak D=22', H=15', SP=10'
8. Oak D=15', H=15', SP=10'
9. Oak D=1', H=15', SP=10'
10. Oak D=2', H=15', SP=10'
11. Palm D=0.4', H=25', SP=8'
12. Palm D=0.4', H=25', SP=8'
13. Palm D=0.4', H=25', SP=8'
14. Palm D=0.4', H=25', SP=8'
15. Palm D=0.4', H=25', SP=8'
16. Palm D=0.4', H=25', SP=8'
17. Palm D=0.4', H=25', SP=8'
18. Palm D=0.4', H=25', SP=8'
19. Palm D=0.4', H=25', SP=8'
20. Palm D=0.4', H=25', SP=8'
21. Palm D=0.4', H=25', SP=8'
22. Palm D=0.4', H=25', SP=8'
23. Palm D=0.4', H=25', SP=8'
24. Palm D=0.4', H=25', SP=8'
25. Palm D=0.4', H=25', SP=8'
26. Palm D=0.4', H=25', SP=8'
27. Palm D=0.4', H=25', SP=8'
28. Palm D=0.4', H=25', SP=8'
29. Palm D=0.4', H=25', SP=8'
30. Palm D=0.4', H=25', SP=8'
31. Palm D=1', H=18', SP=7'
32. Palm D=1', H=18', SP=7'
33. Palm D=1', H=18', SP=7'
34. Palm D=1', H=18', SP=7'
35. Tree D=12', H=12', SP=20'
36. Palm Cluster D=3.5', H=13', SP=8'
37. Palm D=18', H=12', SP=9'
38. Palm D=0.4', H=9', SP=4'
39. Palm D=0.4', H=9', SP=4'
40. Palm D=2', H=13', SP=8'
41. Palm D=2', H=13', SP=8'
42. Palm D=2', H=8', SP=7'
43. Palm D=2', H=8', SP=7'
44. Palm D=2', H=8', SP=7'
45. Palm D=2', H=18', SP=9'
46. Palm D=2', H=18', SP=9'
47. Palm D=2', H=8', SP=7'
48. Palm D=2', H=8', SP=7'
49. Palm D=2', H=8', SP=7'
50. Palm D=0.6', H=20', SP=7'
51. Palm D=0.6', H=20', SP=7'
52. Palm D=0.6', H=20', SP=7'
53. Palm D=0.6', H=20', SP=7'
54. Palm D=0.6', H=20', SP=7'
55. Tree D=2.5', H=12', SP=18'
56. Palm D=2', H=15', SP=12'
57. Palm D=0.65', H=20', SP=7'
58. Palm D=0.65', H=20', SP=7'
59. Palm D=0.65', H=20', SP=7'
60. Palm D=0.65', H=20', SP=7'
61. Palm D=0.65', H=20', SP=7'
62. Palm D=0.65', H=20', SP=7'
63. Palm D=0.65', H=20', SP=7'
64. Palm D=0.65', H=20', SP=7'
65. Palm D=0.65', H=20', SP=7'
66. Palm D=0.65', H=20', SP=7'
67. Palm D=0.65', H=20', SP=7'
68. Palm D=0.65', H=20', SP=7'
69. Palm D=0.65', H=20', SP=7'
70. Palm D=0.65', H=20', SP=7'
71. Palm D=0.65', H=20', SP=7'
72. Palm D=0.65', H=20', SP=7'
73. Palm D=0.65', H=20', SP=7'
74. Palm D=0.65', H=20', SP=7'
75. Palm D=0.65', H=20', SP=7'
76. Palm D=0.65', H=20', SP=7'
77. Palm D=0.65', H=20', SP=7'
78. Palm D=0.65', H=20', SP=7'
79. Palm D=0.65', H=20', SP=7'
80. Palm D=0.65', H=20', SP=7'
81. Palm D=0.65', H=20', SP=7'
82. Palm D=0.65', H=20', SP=7'
83. Palm D=0.65', H=20', SP=7'
84. Palm D=0.65', H=20', SP=7'
85. Palm D=0.65', H=20', SP=7'
86. Palm D=0.65', H=20', SP=7'
87. Palm D=0.65', H=20', SP=7'
88. Palm D=0.65', H=20', SP=7'
89. Palm D=0.65', H=20', SP=7'
90. Tree D=0.9', H=15', SP=8'
91. Oak D=2.75', H=30', SP=20'
92. Palm D=0.65', H=20', SP=7'
93. Palm D=12', H=12', SP=8'
94. Palm D=3.25', H=35', SP=12'
95. Palm D=2.2', H=20', SP=9'
96. Tree D=3.5', H=13', SP=10'
97. Palm D=2.5', H=20', SP=9'
98. Palm D=2.5', H=20', SP=9'
99. Palm D=2.5', H=20', SP=9'
100. Palm D=2.5', H=20', SP=9'
101. Palm D=2.5', H=20', SP=9'
102. Palm D=2.5', H=20', SP=9'
103. Palm D=2.5', H=13', SP=8'
104. Palm Cluster D=4', H=35', SP=8'
105. Palm Cluster D=6', H=20', SP=12'
106. Palm Cluster D=4.5', H=15', SP=10'
107. Palm D=0.65', H=20', SP=8'
108. Palm D=0.65', H=20', SP=8'
109. Palm D=0.65', H=20', SP=8'
110. Palm D=0.65', H=20', SP=8'
111. Palm D=0.65', H=20', SP=8'
112. Palm D=0.65', H=20', SP=8'
113. Palm D=0.65', H=20', SP=8'
114. Palm D=0.65', H=20', SP=8'
115. Palm D=0.65', H=20', SP=8'
116. Palm D=0.65', H=20', SP=8'
117. Palm D=0.65', H=20', SP=8'
118. Palm Cluster D=4', H=12', SP=8'
119. Tree D=12', H=20', SP=15'
120. Palm D=0.65', H=20', SP=8'
121. Palm D=0.65', H=20', SP=8'
122. Palm D=0.65', H=20', SP=8'
123. Palm D=0.65', H=20', SP=8'
124. Palm D=0.65', H=20', SP=8'
125. Palm D=0.65', H=20', SP=8'
126. Palm D=0.65', H=20', SP=8'
127. Palm D=0.65', H=20', SP=8'
128. Palm D=2', H=10', SP=8'
129. Palm D=0.8', H=12', SP=6'
130. Palm D=0.8', H=12', SP=6'
131. Palm D=0.6', H=20', SP=8'
132. Palm D=0.65', H=20', SP=8'
133. Palm D=0.6', H=20', SP=8'
134. Palm D=0.65', H=20', SP=7'
135. Palm D=0.65', H=20', SP=7'

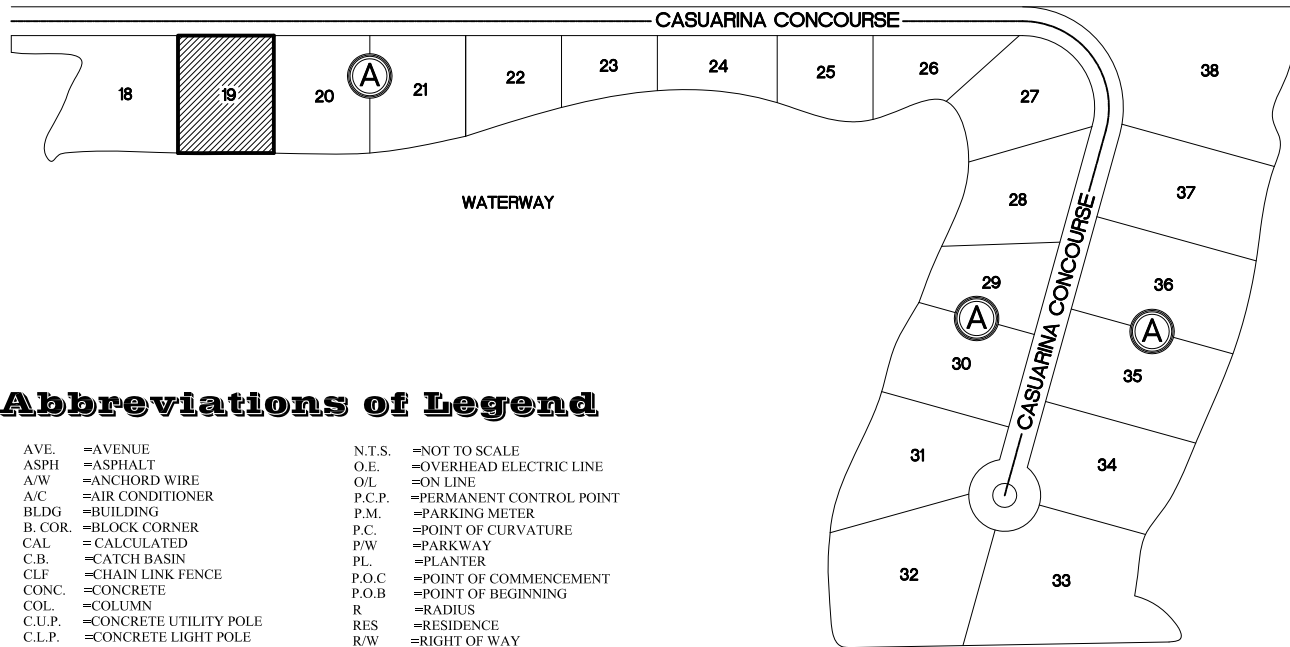
68. Palm D=0.65', H=20', SP=7'

Boundary Survey

Graphic Scale 1" = 20'



Location Sketch N.T.S.



Abbreviations of Legend

AVE.	=AVENUE	N.T.S.	=NOT TO SCALE
ASPH.	=ASPHALT	O.E.	=OVERHEAD ELECTRIC LINE
A.W.	=ANCHOR WIRE	O.L.	=ON LINE
B.LDG.	=BUILDING	P.C.P.	=PERMANENT CONTROL POINT
B.COR.	=BLOCK CORNER	P.M.	=PARKING METER
CAL.	=CALCULATED	P.W.	=POINT OF CURVATURE
C.B.	=CATCH BASIN	R	=RADIUS
CLF.	=CHAIN LINK FENCE	R.O.B.	=POINT OF BEGINNING
CONC.	=CONCRETE	RIS.	=RESIDENCE
COL.	=COLUMN	R.W.	=RIGHT OF WAY
C.L.P.	=CONCRETE UTILITY POLE	S.D.H.	=SET DRILL HOLE
CBS.	=CONCRETE BLOCK STRUCTURE	S.I.P.	=SET IRON PIPE
C.M.E.	=CANAL MAINTENANCE EASEMENT	S.N.	=SET NAIL
D	=DELTA	SDWLK	=SIDEWALK
D.W.	=DRAINAGE & MAINTENANCE EASEMENT	ST	=STREET
D.M.E.	=DRAINAGE & MAINTENANCE EASEMENT	T	=TANGENT
ENC.	=ENCROACHMENT	T.E.	=UTILITY EASEMENT
E.T.P.	=ELECTRIC TRANSFORMER PAD	W.F.	=WOOD FENCE
F.P.L.	=FLORIDA POWER AND LIGHT	W.V.	=WATER VALVE
F.H.	=FIRE HYDRANT	W.U.P.	=WOOD UTILITY POLE
F.I.P.	=FOUND IRON PIPE		=IRON FENCE
F.F.	=FINISH FLOOR		=CHAIN LINK FENCE
D.H.F.	=FOUND DRILL HOLE		=WOOD FENCE
F.R.	=FOUND REBAR		=CBS WALL
F.D.	=FOUND DISC		=ENTER LINE
F/N	=FOUND NAIL		=EASEMENT
I	=LENGTH		=OVERHEAD ELEC.
L	=LENGTH		=DENOTES ELEVATIONS
L.M.E.	=LAKE MAINTENANCE EASEMENT		=BUILDING
L.F.E.	=LOWEST FLOOR ELEVATION		=CATCH BASIN
L.P.	=LIGHT POLE		=W.U.P.
MEAS.	=MEASURED		=STATE ROAD
M.H.	=MAN HOLE		=US HIGHWAY
M.L.	=MONUMENT LINE		=INTERSTATE
N.G.V.D.	=NATIONAL GEODETIC VERTICAL DATUM		=MONITORY WELL

CERTIFIED ONLY TO:
ST FELIU LLC

PROPERTY ADDRESS:
190 Casuarina Concourse
Coral Gables, Florida 33143

Surveyor's Notes:

- #11 The herein captioned Property was surveyed and described based on the Legal Description Provided by Client.
- #12 This Certification is Only for the lands as Described, it is not a certification of Title, Zoning, Easements, or Freedom of encumbrances. ABSTRACT NOT REVIEWED.
- #13 There may be additional Restrictions not Shown on this survey that may be found in the Public Records of Said County Examination of ABSTRACT OF TITLE will have to be made to determine recorded instruments, if any affecting this property.
- #14 Accuracy:
The expected use of land, as classified in the Standards of Practice (5J-17.052), is residential. The minimum relative distance accuracy for this type of boundary survey is 1.0 foot in 10,000.00' feet. the accuracy obtained by measurement and calculation of a closed geometric figure was found to exceed this requirement.
- #15 Foundation and/ or footing that may cross beyond the boundary lines of the parcel herein described are not shown hereon.
- #16 Not valid without the signature and original seal of a Florida Licensed Surveyor and Mapper, additions or deletions to survey maps or reports by other than the signing party or parties.
- #17 Contact the appropriate authority prior to any design work on the herein describing parcel for building and zoning information.
- #18 Underground Utilities are not depicted hereon, contact the appropriate authority prior to any design work or construction on the property herein described. Surveyor shall be notified as to any deviation from utilities shown hereon.
- #19 Ownership subject to Opinion of Title.

LEGAL DESCRIPTION:

Lot 19, Block A, of: "GABLES ESTATES
NUMBER 2", according to the Plat Thereof as
Recorded in Plat Book 60, Page 37, of the Public
Records of Miami-Dade County, Florida.

ELEVATION INFORMATION

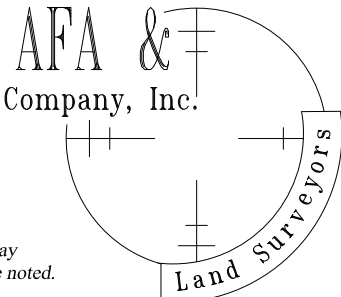
**National Flood Insurance Program
FEMA Elev. Reference to NGVD 1929**

Comm Panel 120639
Panel # 0459
Firm Zone: "AE"
Date of Firm: 09-11-2009
Base Flood Elev. 11.00'
F.Floor Elev. 13.49'
Garage Elev. 11.15'
Suffix: "L"
Elev. Reference to NGVD 1929

JOB #	20-1027
DATE	09-22-2020
PB	60-37

Surveyors Notes:

- #1 Land Shown Hereon were not abstracted for Easement and/or Right of Way Records. The Easement / Right of Way Show on Survey are as per plat of record unless otherwise noted.
- #2 Benchmark: Miami-Dade County Public Works Dep. BM #475; Elev. + 3.97'
- #3 Bearings as Shown hereon are Based upon Casuarina Concourse, N90°00'00"E
- #4 Please See Abbreviations
- #5 Drawn By: A. Torres
- #6 Date: 9-22-2020
- #7 Completed Survey Field Date: 9-21-2020
- #8 Disc No 2020, Station Surveying Scion
- #9 Last Revised:
- #10 Zoned Building setback line not determined



Professional
Surveyors & Mappers LB 7498
13050 S.W. 133rd Court
Miami Florida, 33186
E-mail: afaco@bellsouth.net
Ph: (305) 234-0588
Fax: (206) 495-0778

Armando F. Alvarez
Professional Surveyor & Mapper #5526
State of Florida
Not Valid unless Signed & Stamped with Embossed Seal



FERNANDEZ RESIDENCE
190 CASABURINA CONCOURSE

FERNANDEZ
RESIDENCE

190 CASABURINA CONCOURS DR
CORAL GABLES, FLORIDA

SEAL

BALLI-TRAUTMAN ARCHITECTS LLC -AA26002988
GIORGIO LUIGI BALLI -AR13951
DAVID SCOTT TRAUTMAN -AR15045

REVISIONS

NO.	DESC	DATE

PRELIMINARY SET

SEAL



JOB NUMBER:
CHECKED BY: DT
ISSUE DATE: Issue Date
SCALE: AS NOTED

SHEET TITLE

COVER SHEET

SHEET NUMBER

A000



SUBJECT PROPERTY



SUBJECT PROPERTY



SUBJECT PROPERTY



PROPERTY TO THE EAST



AERIAL VIEW OF SUBJECT PROPERTY AND CONTEXT



PROPERTY TO THE WEST

FERNANDEZ
RESIDENCE

190 CASAURINA CONCOURS DR
CORAL GABLES, FLORIDA

SEAL

BALLI-TRAUTMAN ARCHITECTS LLC -AA26002988
GIORGIO LUIGI BALLI -AR13951
DAVID SCOTT TRAUTMAN -AR15045

REVISIONS

NO.	DESC	DATE

PRELIMINARY SET

SEAL



JOB NUMBER: _____
CHECKED BY: _____ DT
ISSUE DATE: _____ Issue Date
SCALE: _____ AS NOTED

SHEET TITLE _____

CONTEXT

SHEET NUMBER _____

A001

190 CASAURINA CONCOURS DR
CORAL GABLES, FLORIDA

SEAL

BALLI-TRAUTMAN ARCHITECTS LLC	-AA2600296
GIORGIO LUIGI BALLI	-AR13951
DAVID SCOTT TRAUTMAN	-AR15045

REVISIONS

[illegible]

PRELIMINARY SET

SEAL



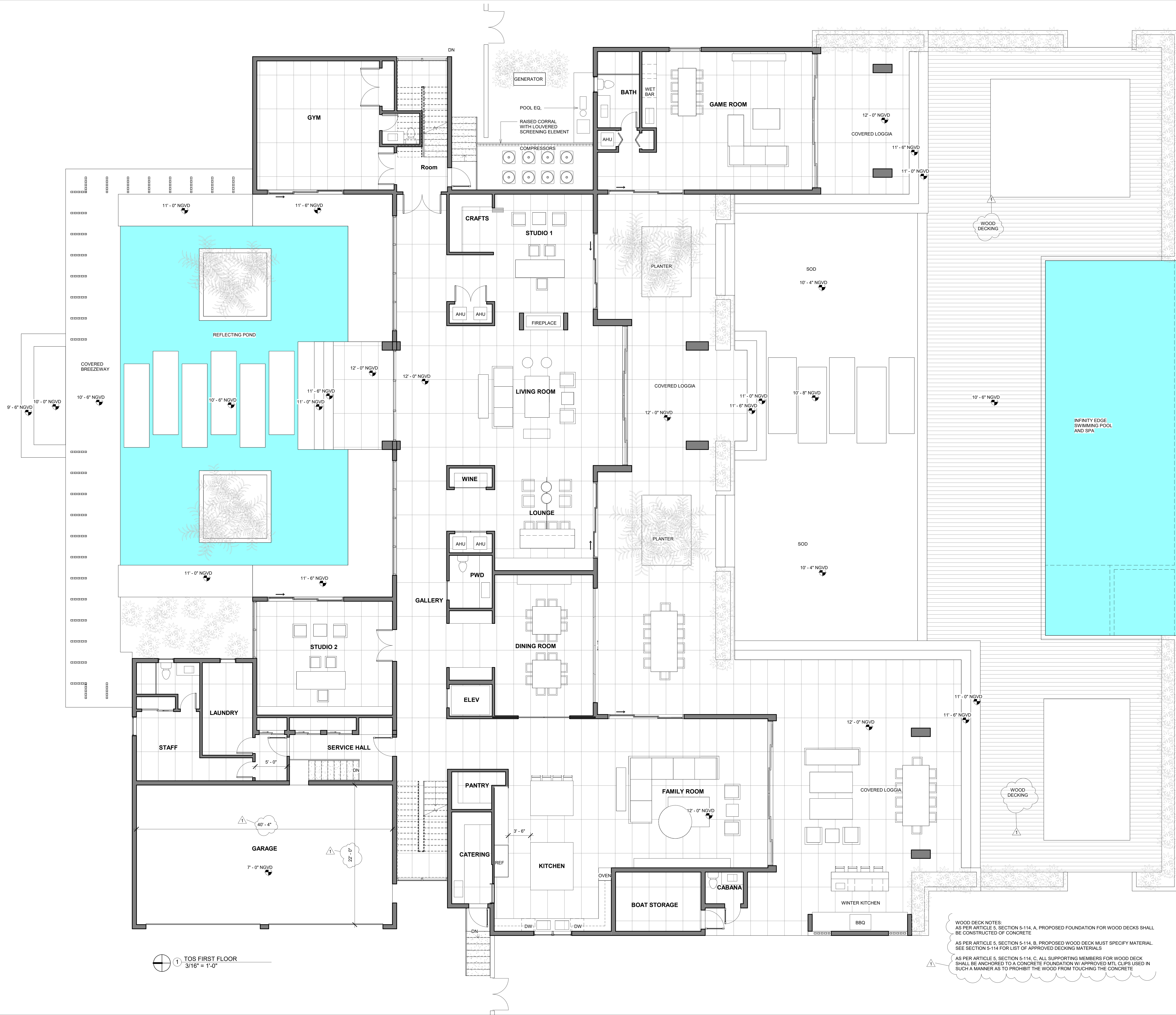
JOB NUMBER:	
CHECKED BY:	DT
ISSUE DATE:	Issue Date
SCALE:	AS NOTED

SHEET TITLE

SHEET NUMBER

A102

COPYRIGHT BALLI-TRAUTMAN ARCHITECTS, LLC
1533 SUNSET DRIVE SUITE 101, CORAL GABLES, FL 33143



FERNANDEZ
RESIDENCE

190 CASAURINA CONCOURS DR
CORAL GABLES, FLORIDA

SEAL

BALLI-TRAUTMAN ARCHITECTS LLC -AA26002988
GIORGIO LUIGI BALLI -AR13951
DAVID SCOTT TRAUTMAN -AR15045

REVISIONS

NO.	DESC	DATE

PRELIMINARY SET

SEAL



JOB NUMBER:
CHECKED BY: DT
ISSUE DATE: Issue Date
SCALE: AS NOTED

SHEET TITLE

SECOND FLOOR
PLAN

SHEET NUMBER

A103

COPYRIGHT BALLI-TRAUTMAN ARCHITECTS, LLC
1533 SUNSET DRIVE SUITE 101, CORAL GABLES, FL 33143



1 TOS SECOND FLOOR
3/16" = 1'-0"

190 CASAURINA CONCOURS DR
CORAL GABLES, FLORIDA

SEAL

BALLI-TRAUTMAN ARCHITECTS LLC	-AA2600296
GIORGIO LUIGI BALLI	-AR13951
DAVID SCOTT TRAUTMAN	-AR15045

REVISIONS

[illegible]

PRELIMINARY SET

SEAL



JOB NUMBER:	
CHECKED BY:	DT
ISSUE DATE:	Issue Date
SCALE:	AS NOTED

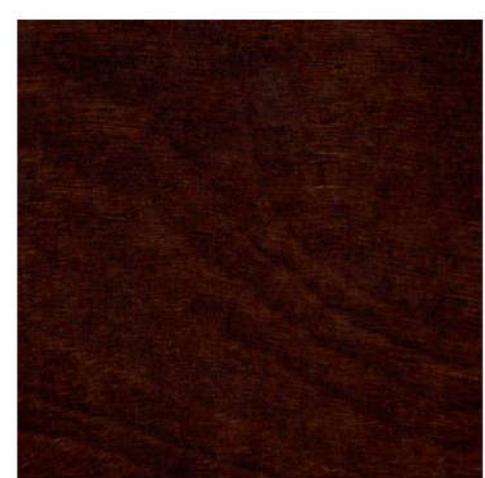
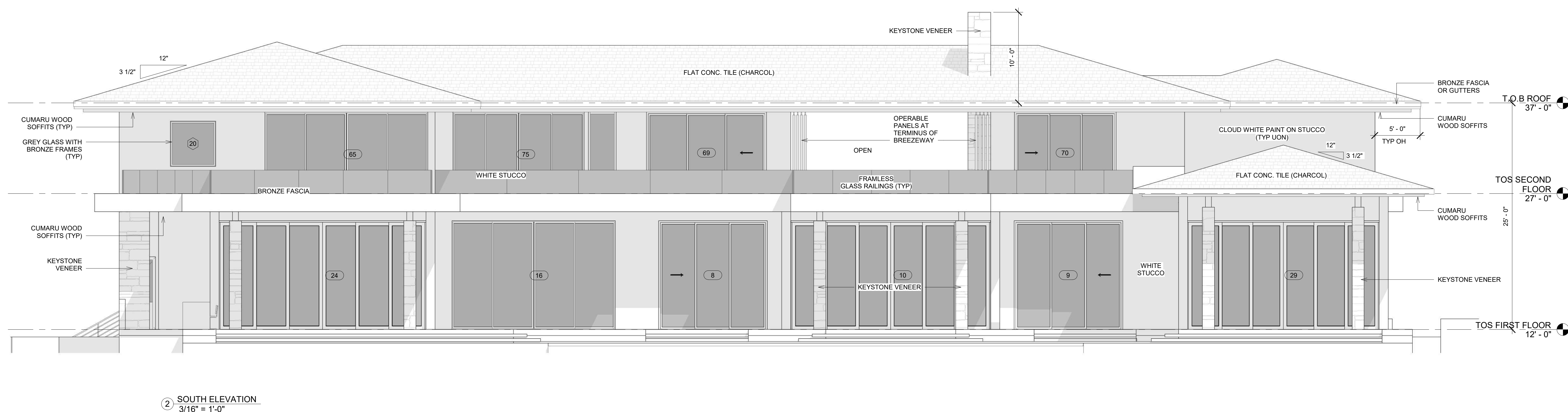
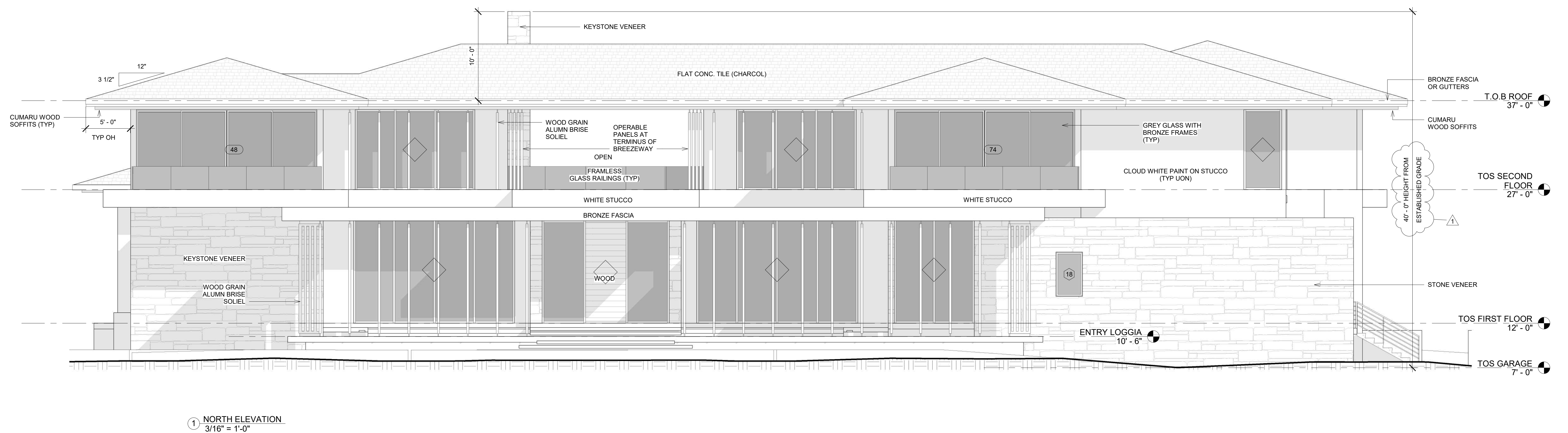
SHEET TITLE

ELEVATIONS N/S

SHEET NUMBER

A104

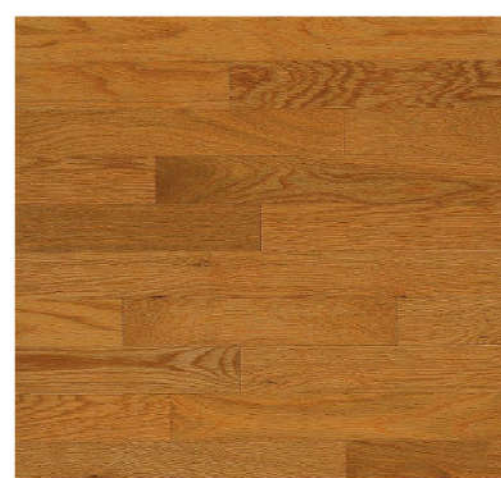
COPYRIGHT BALLI-TRAUTMAN ARCHITECTS, LLC
1533 SUNSET DRIVE SUITE 101, CORAL GABLES, FL 33143



WINDOW FRAMES, FASCIAS,
LOUVERS AND HANDRAILS



KEYSTONE VENEER



CUMARU SOFFITS



LIMESTONE FLOORING



POOL DECK

CLOUD WHITE STUCCO

190 CASURINA CONOURS DR
CORAL GABLES, FLORIDA

SEAL

BALLI-TRAUTMAN ARCHITECTS LLC	-AA2600296
GIORGIO LUIGI BALLI	-AR13951
DAVID SCOTT TRAUTMAN	-AR15045

REVISIONS

[illegible]

PRELIMINARY SET

SEAL



JOB NUMBER:	
CHECKED BY:	DT
ISSUE DATE:	Issue Date
SCALE:	AS NOTED

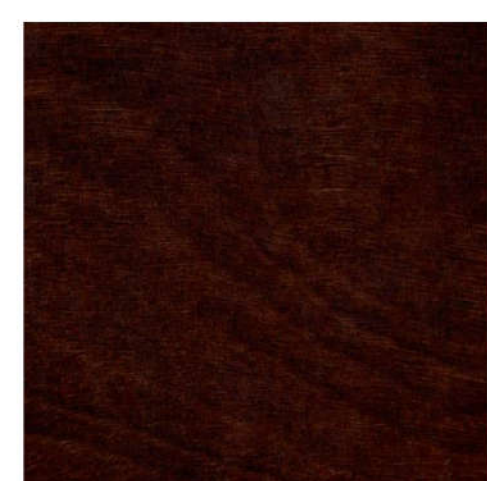
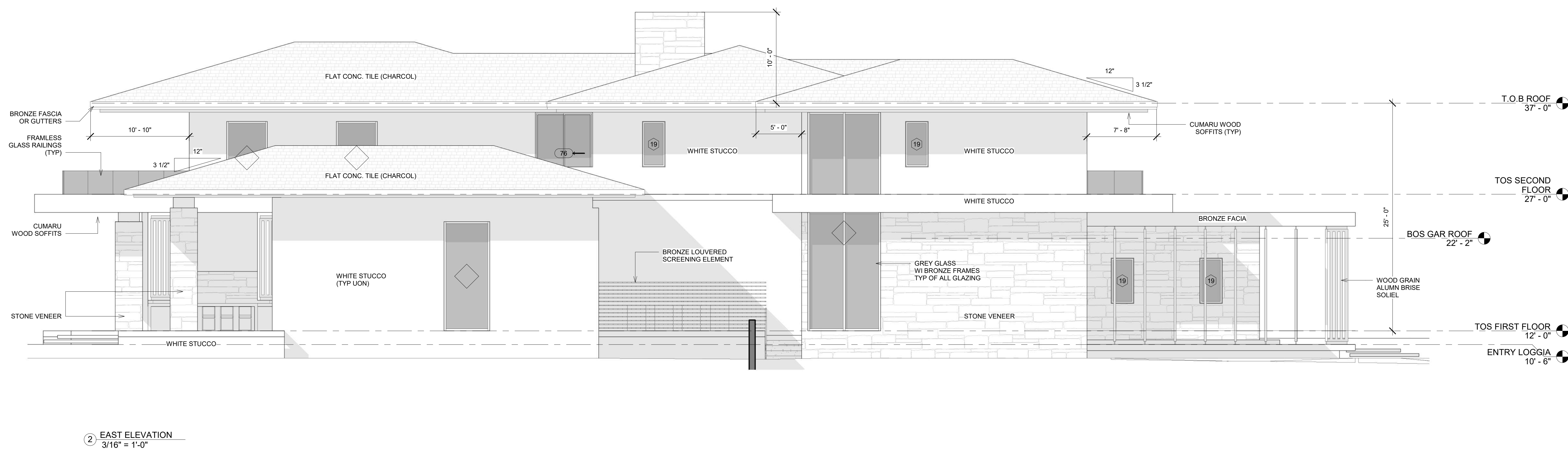
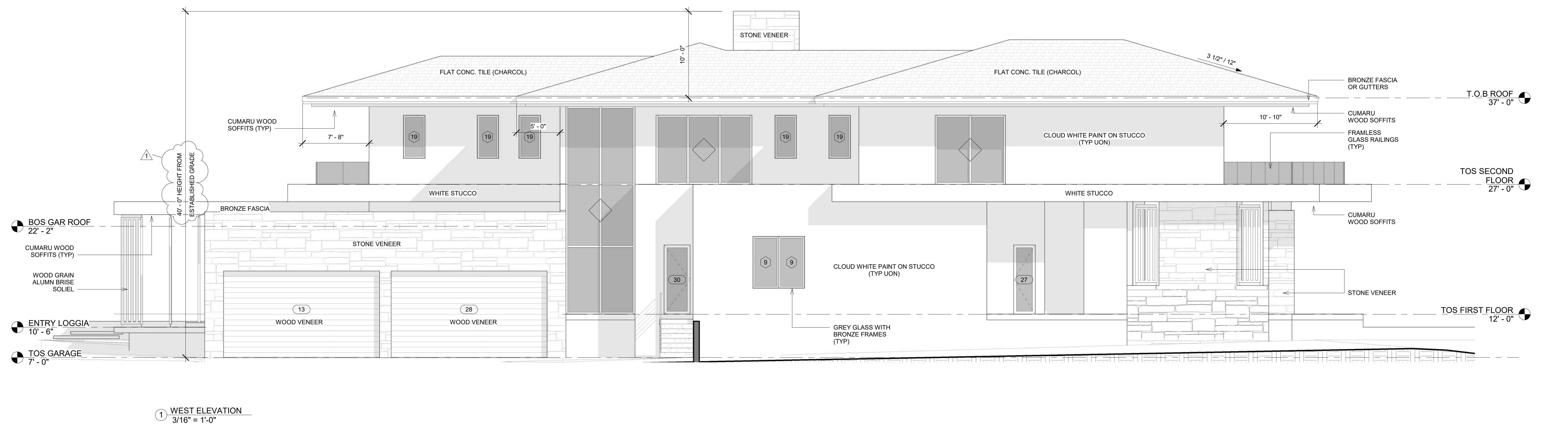
SHEET TITLE

ELEVATIONS
W/E

SHEET NUMBER

A105

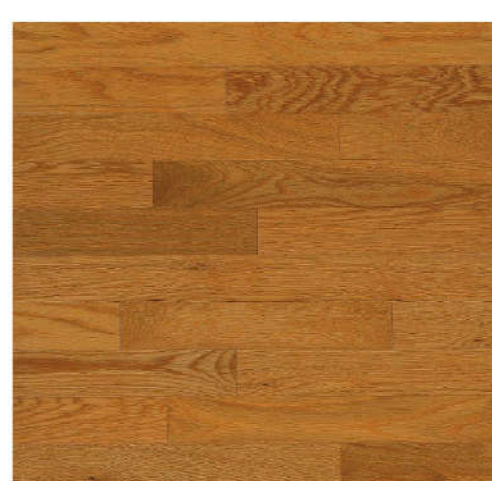
COPYRIGHT BALLI-TRAUTMAN ARCHITECTS, LLC
1533 SUNSET DRIVE SUITE 101, CORAL GABLES, FL 33143



WINDOW FRAMES, FASCIAS
LOUVERS AND HANDRAILS



KEYSTONE VENEER



CUMARU SOFFITS



LIMESTONE FLOORING



POOL DECK

CLOUD WHITE STUCCO



FROM CASAURINA CONCOUSE



FROM BACK YARD



ARERIAL FROM SOUTHWEST



ARERIAL FROM NORTHEAST

FERNANDEZ
RESIDENCE

190 CASAURINA CONCOURS DR
CORAL GABLES, FLORIDA

SEAL

BALLI-TRAUTMAN ARCHITECTS LLC -AA26002988
GIORGIO LUIGI BALLI -AR13951
DAVID SCOTT TRAUTMAN -AR15045

REVISIONS

NO.	DESC	DATE

PRELIMINARY SET

SEAL



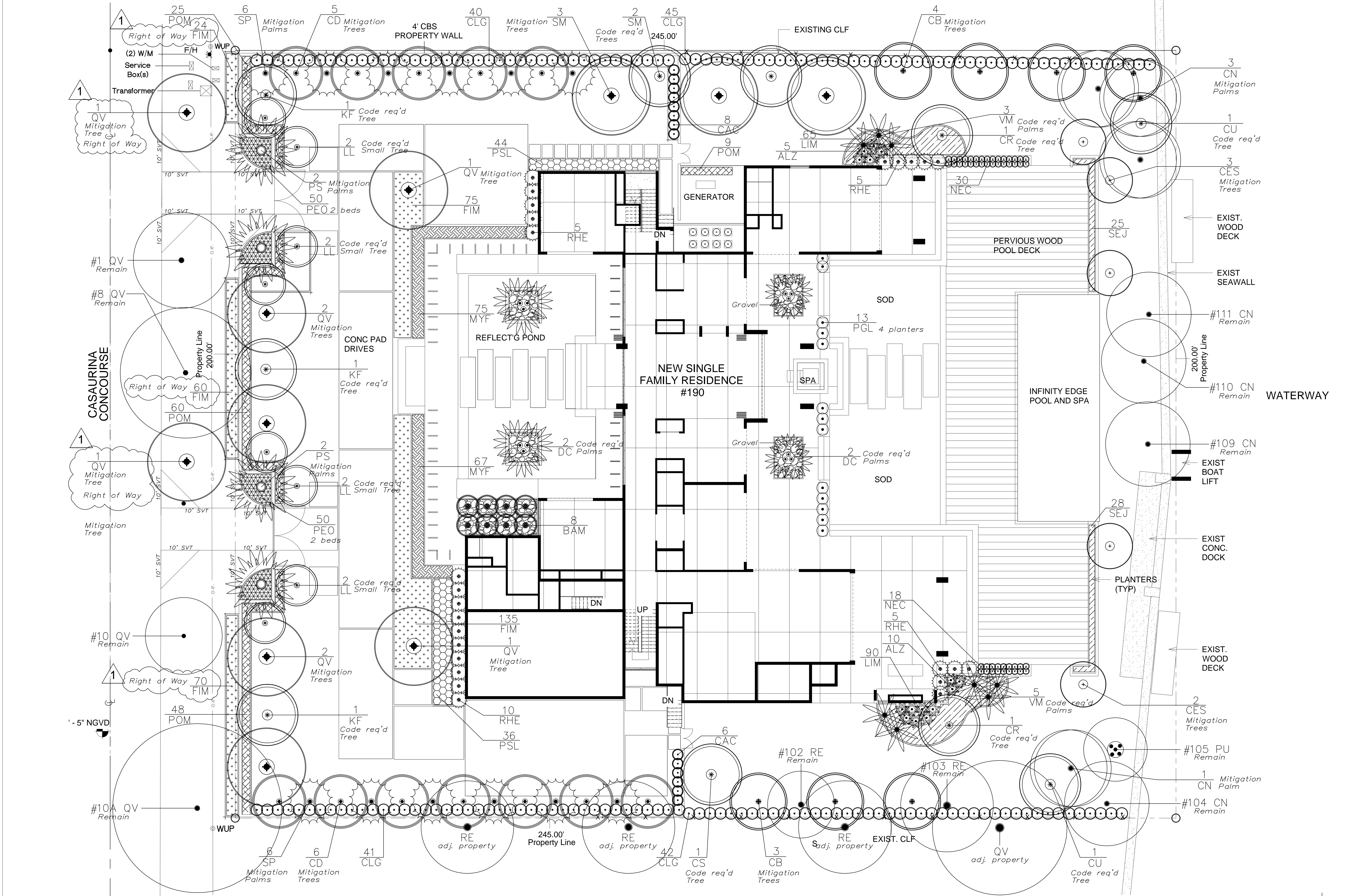
JOB NUMBER: _____
CHECKED BY: _____ DT
ISSUE DATE: _____ Issue Date
SCALE: _____ AS NOTED

SHEET TITLE _____

RENDERINGS

SHEET NUMBER _____

A106

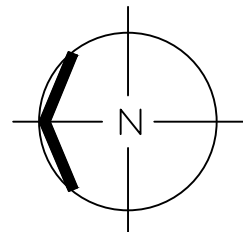


Plant List- Owner's Property					
Qty	Key	Botanical / Common Name	Specification	Native Y/N	Mitigation sf Prov'd
5	QV	Quercus virginiana / Live Oak	16' oa ht, 8' spr, 4" cal.	Yes	Large Tree 500 sf 3500 sf
3	SM	Swietenia mahagoni / Mahogany	16' oa ht, 8' spr, 4" cal.	Yes	Large Tree 500 sf 1500 sf
12	CD	Coccoloba diversifolia / Pigeon Plum	12' oa ht, 6' spr, 2" cal.	Yes	Med. Tree 300 sf 3600 sf
5	CES	Conocarpus e. sericeus / Silver Buttonwood	10' oa ht, 5' spr, 1.5" cal.	Yes	Small Tree 200 sf 1000 sf
					Native Tree Total = 9600 sf
7	CB	Calophyllum brasiliense / Beautyleaf	16' oa ht, 8' spr, 4" cal.	No	Large Tree 500 sf 3500 sf
4	CN	Cocos nucifera / Coconut Palm	24' oa ht, 12' CT	No	Large Palm 300 sf 1200 sf
4	PS	Phoenix sylvestris / Sylvester Date Palm	24' oa ht, 16' CT	No	Large Palm 300 sf 1200 sf
12	SP	Sabal palmetto / Sabal Palm	20' oa ht, 16' CT	Yes	Med. Palm 200 sf 2400 sf
					Palm Total = 4800 sf
					Mitigation Total = 17,900 sf
2	SM	Swietenia mahagoni / Mahogany	12' oa ht, 6' spr, 2" cal.	Yes	Code Req'd Tree
2	CR	Clusia rosea / Pitch Apple	12' oa ht, 6' spr, 2" cal.	No	Code Req'd Tree
2	CU	Coccoloba uvifera / Seagrape	12' oa ht, 6' spr, 2" cal.	Yes	Code Req'd Tree
3	KF	Krugiodendron ferreum / Black Ironwood	12' oa ht, 6' spr, 2" cal.	Yes	Code Req'd Tree
1	CS	Cordia sebestena / Orange Geiger	12' oa ht, 6' spr, 2" cal.	Yes	Code Req'd Tree
8	VM	Veitchia montomeriana / Veitchia Palm	20' oa ht, 16' CT	No	Code Req'd Palm

8	VM	Veitchia montomeriana / Veitchia Palm	20' oa ht, 16' CT	No	Code Req'd Palm
4	DC	Dypsis cabadae / Cabada Palm	16' oa ht, 16' CT	No	Code Req'd Palm
8	LL	Ligustrum lucidum / Ligustrum Tree	8' ht, 8' spr.	No	Code Req'd Small Tree
168	CLG	Clusia guttifera / Small Leaf Clusia	6-7' ht, 3' spr, 25 gal.	No	
142	POM	Podocarpus macrophyllus / Podocarpus	5-6' ht, 2' spr, 25 gal.	No	
142	MYF	Myrcianthes fragrans / Simpson Stopper	30" ht, 18" spr, 7 gal.	Yes	
14	CAC	Capparis cynophallophora / Jamaican Caper	30" ht, 18" spr, 7 gal.	Yes	
116	PSL	Psychotria ligustrifolia / Bahama Coffee	18" ht, 18" spr, 3 gal.	Yes	
582 Prov'd Shrubs, 272 Native					
8	BAM	Bambusa malingensis / Seabreeze Bamboo	18-20' oa ht, 15 gal.	No	
25	RHE	Rhapis excelsa / Lady Palm	5' oa ht, 3' spr.	No	
15	ALZ	Alpinia zerumbet / Green Shell Ginger	4' ht x 3' spr, 15 gal.	No	
48	NEC	Neomarcia caerulea / Blue Apostles' Iris	36" ht x 24" spr, 7 gal.	No	
13	PGL	Philodendron gloriosum / Gloriosum	24" ht, 24" spr, 7 gal.	No	
162	SEJ	Serissa japonicum / Cotoneaster	16" x 16" spr, 7 gal.	No	
210	FIM	Ficus microcarpa / Green Island Ficus	12" x 12" spr, 3 gal.	No	
155	LIM	Liriope muscarie, E.G. / Evergreen Giant Liriope	12" x 12" spr, 1 gal.	No	
100	PEO	Peperomia obtusifolia / Peperomia-variegated	8" x 8" spr, 3 gal.	No	

Plant List - Right of Way					
Qty	Key	Botanical / Common Name	Specification	Native Y/N	Mitigation sf Prov'd
2	QV	Quercus virginiana / Live Oak	16' oa ht, 8' spr, 4" cal.	Yes	Large Tree 500 sf 3500 sf
154	FIM	Ficus microcarpa / Green Island Ficus	12" x 12" spr, 3 gal.	No	

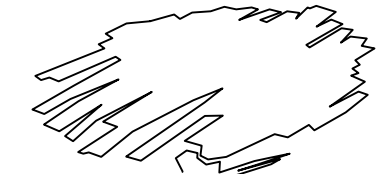
Landscape Plan
1/16"=1'-0"



FERNANDEZ

190 Casaurina Concourse,
Coral Gables, Florida

SEAL



H.L. Martin, Landscape Architect, P.A.
LC# 26000404 LA #0001722

5965 SW 38th Street, Miami, Florida 33155
305.790-4372, hmartin@bellsouth.net

Herbert Lester Martin, Landscape Architect

BALLI-TRAUTMAN ARCHITECTS LLC -AA26002968

GIORGIO LUIGI BALLI -AR13951
DAVID SCOTT TRAUTMAN -AR15045

REVISIONS

NO.	DESC	DATE
1	R/W Plant List	03.18.21

PRELIM

SEAL



JOB NUMBER:

CHECKED BY: DT

ISSUE DATE: Issue Date

SCALE: AS NOTED

SHEET TITLE

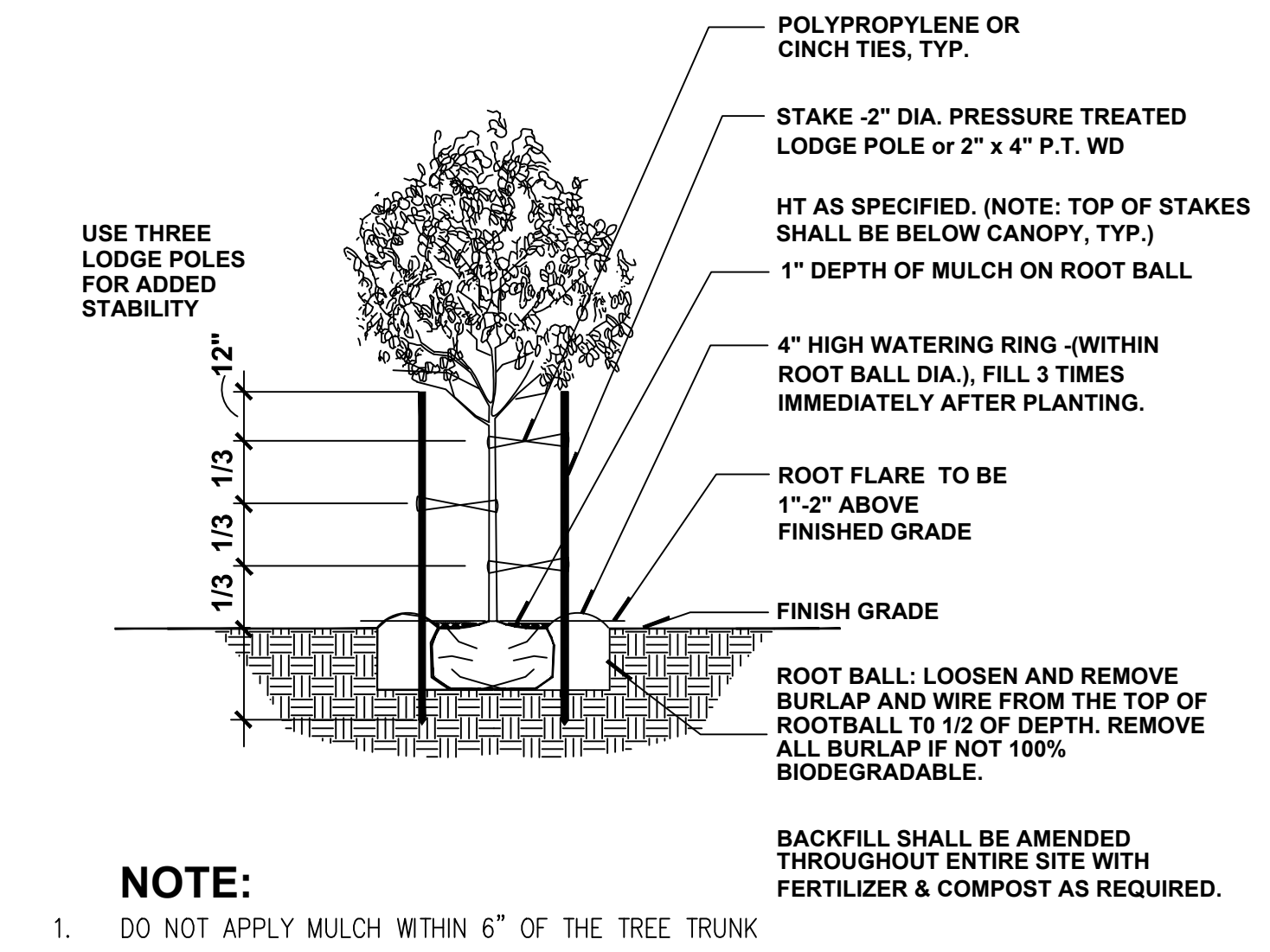
LANDSCAPE PLAN

SHEET NUMBER

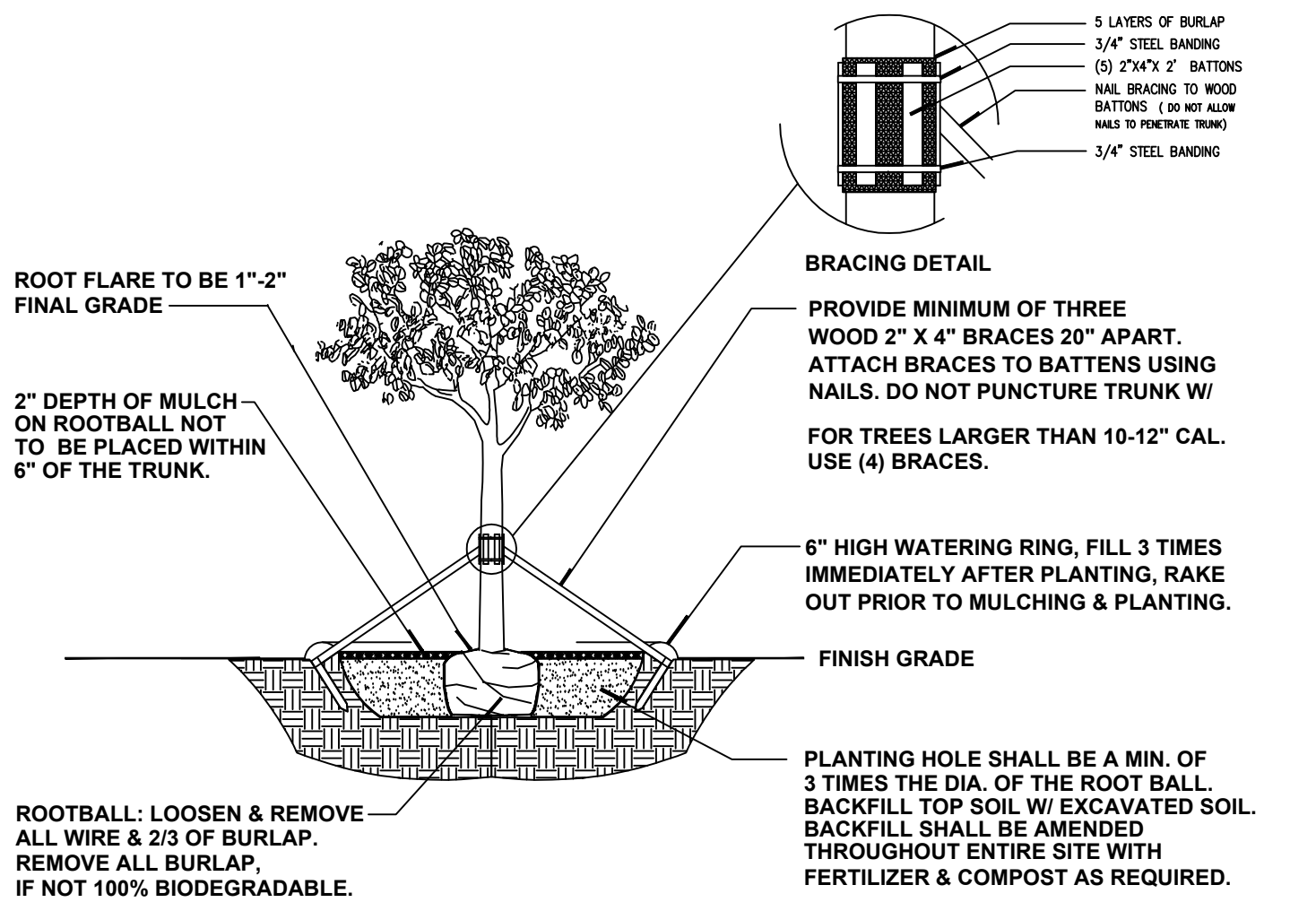
LA-1

COPYRIGHT BALLI-TRAUTMAN ARCHITECTS, LLC
1533 SUNSET DRIVE SUITE 101, CORAL GABLES, FL 33143

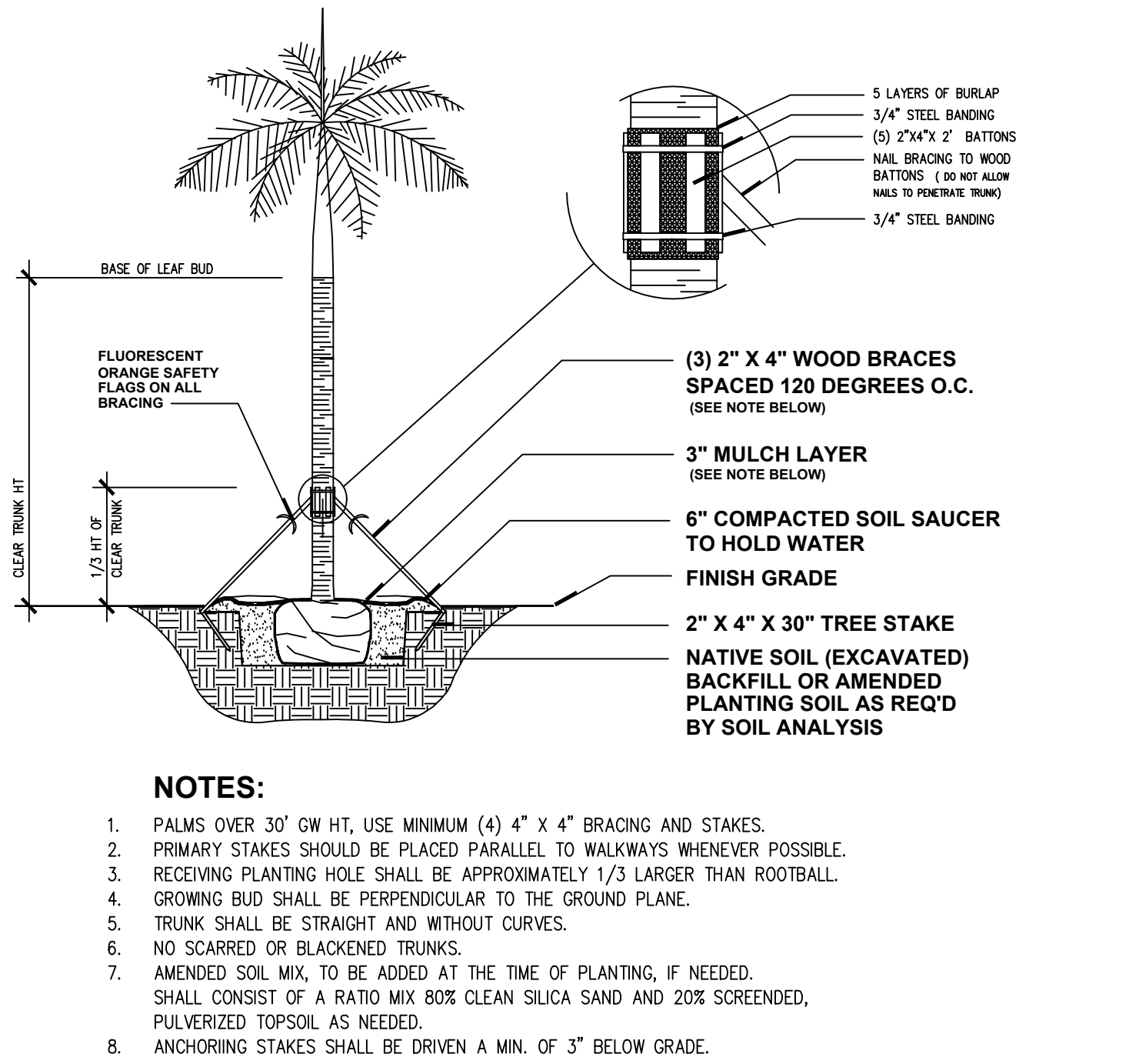
LA-1 Landscape Plan
LA-2 Landscape Notes,
Details & Legend
LA-3 Tree Survey /
Disposition &
Protection Plan
LA-4 Tree Survey List



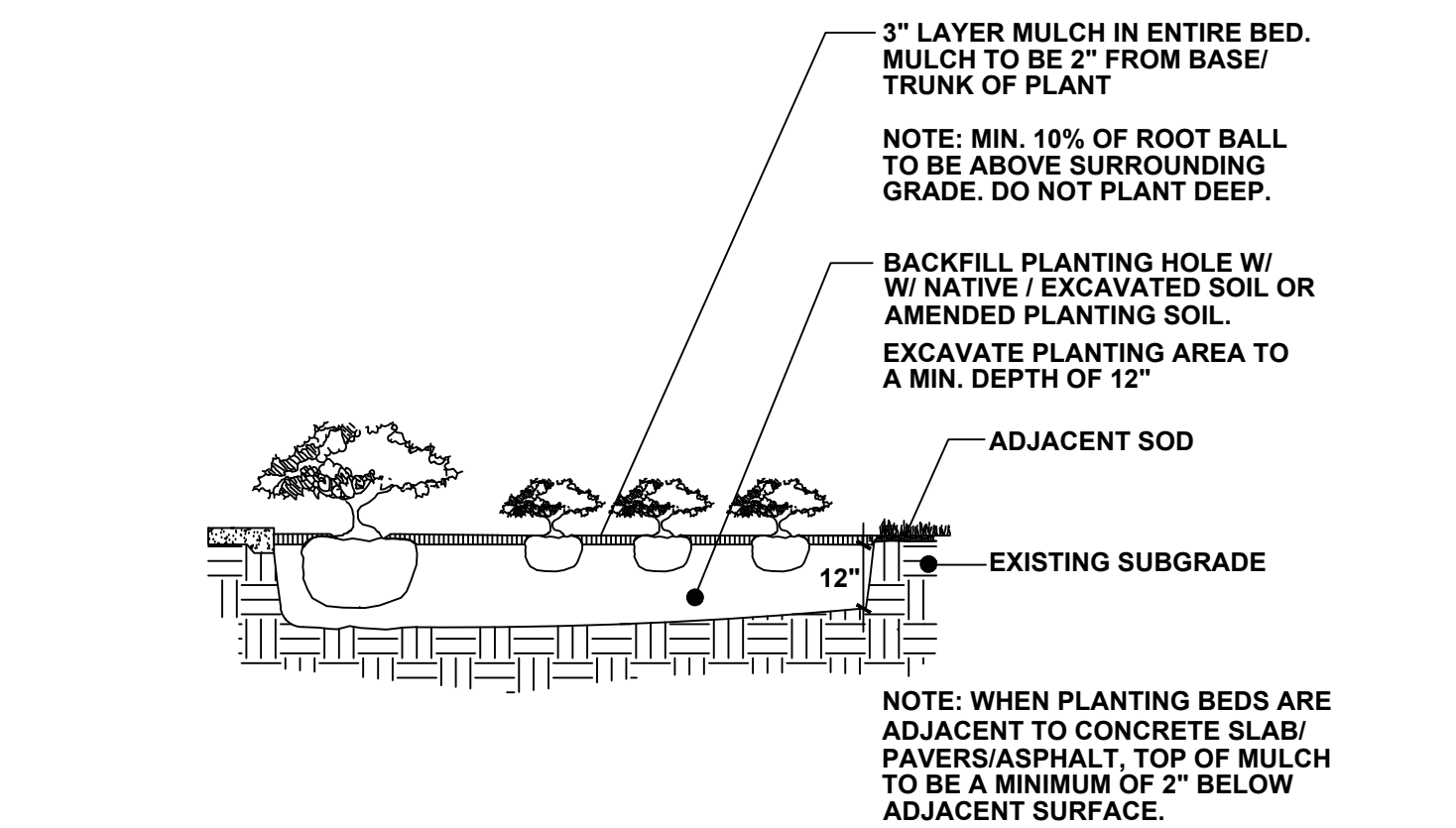
Tree Planting & Bracing Detail With A Caliper up to 2.5" N.T.S.



Tree Planting & Bracing Detail Caliper of 2.5" or Greater N.T.S.



Typical Palm Planting Detail N.T.S.



Shrub/Groundcover Detail N.T.S.

LANDSCAPE ARCHITECT'S PLANT / PLANTING NOTES

- ALL PLANT MATERIAL TO BE FLORIDA GRADE NO. 1 (FG #1) OR BETTER FLORIDA DEPARTMENT OF AGRICULTURE GRADES AND STANDARDS; PARTS I AND II, 5th EDITION: 2015, RESPECTIVELY.
- TWO MEETINGS, PRE-INSTALLATION & SUBSTANTIAL COMPLETION, SHALL BE REQ'D DURING INSTALLATION/CONSTRUCTION PROCESS. PRE-INSTALLATION MEETING SHALL BE SCHEDULED W/ LANDSCAPE ARCHITECT, TWO WEEKS PRIOR TO INSTALLATION.
- A MUNICIPALLY APPROVED LANDSCAPE PLAN IS A LEGAL & BINDING DOCUMENT. NO CHANGES SHALL BE MADE WITHOUT PRIOR NOTIFICATION & SUBSEQUENT WRITTEN APPROVAL OF THE LANDSCAPE ARCHITECT & GOVERNING MUNICIPALITY. (IF REQ'D)
- LANDSCAPE PLAN SHALL BE INSTALLED IN COMPLIANCE WITH ALL LOCAL/PERTINENT CODES.
- LANDSCAPE CONTRACTOR SHALL REVIEW ALL DRAWINGS AND PREPARE ONES OWN QUANTITY COUNTS (PRIOR TO BID COST AND COMPARE TO ARCHITECT'S PLANT LIST). LANDSCAPE CONTRACTOR IS RESPONSIBLE FOR ATTAINING ACCURATE COUNT OF PLANT MATERIALS SPECIFIED. IN THE EVENT OF DISCREPANCIES, LANDSCAPE CONTRACTOR SHALL BRING TO THE ATTENTION OF LANDSCAPE ARCHITECT. LANDSCAPE CONTRACTOR IS RESPONSIBLE FOR INSTALLATION OF THE LANDSCAPE PLAN. LANDSCAPE PLAN SHALL TAKE PRECEDENCE OVER PLANT LIST.
- LANDSCAPE CONTRACTOR SHALL LOCATE AND VERIFY ALL UNDERGROUND UTILITIES PRIOR TO DIGGING, SUNSHINE STATE ONE CALL OF FLORIDA. (800) 432-4770.
- ALL TREES TO BE STAKED IN A GOOD WORKMANLIKE MANNER, NO NAIL STAKING IN TRUNKS PERMITTED. ALL GUYING & STAKING TO BE REMOVED WITHIN 12 MONTHS AFTER PLANTING.
- ALL PLANTING BEDS TO BE WEED AND GRASS FREE, AND SHALL BE EXCAVATED TO A DEPTH OF 12" BELOW GRADE. TOP OF BEDS SHALL BE 3" BELOW ADJ. PAVED SURFACES. ALL CONSTRUCTION DEBRIS SHALL BE REMOVED.
- ALL INVASIVE EXOTIC PLANTS (CAT.1) TO BE REMOVED FROM SITE, PRIOR TO LANDSCAPE ARCHITECTS' FINAL INSPECTION. REFER TO FLORIDA EXOTIC PEST PLANT COUNCIL (FLEPPC) 2015 LIST OF EXOTIC PLANT SPECIES, CAT#1, ONLY.
- ALL SOD SHALL BE ST. AUGUSTINE 'FLORATAM' SOLID SOD, (UNLESS OTHERWISE NOTED) AND LAID WITH ALTERNATING AND ABUTTING JOINTS. SOD SHALL BE LAID OVER A 2" LAYER OF TOPSOIL. LANDSCAPE CONTRACTOR SHALL NOTIFY LANDSCAPE ARCHITECT, PRIOR TO INSTALLATION.
- MULCH SHALL BE EUCALYPTUS OR PINE BARK MULCH,(UNLESS OTHERWISE NOTED) APPLIED AT A MIN. DEPTH OF 3" OVER PLANTING BEDS. MULCH SHALL NOT APPLIED OVER ANNUAL PLANTING BEDS. MULCH SHALL NOT BE PLACED WITHIN 6" OF TREE & PALM TRUNKS. TOP OF MULCH SHALL NOT EXCEED HEIGHT OF ADJACENT PAVED SURFACES.
- ALL PLANTED AREAS TO RECEIVE 100% COVERAGE BY AN AUTOMATIC IRRIGATION SYSTEM, WITH A MINIMUM OF 50% OVERLAP. RAIN SENSOR TO BE PROVIDED. IRRIGATION SYSTEM TO BE INSTALLED IN COMPLIANCE W/ FLORIDA BUILDING CODE, (FBC), LATEST EDITION. BUBBLERS SHALL BE INSTALLED ON ALL RELOCATED & INSTALLED TREES & PALMS TO AID IN THEIR ESTABLISHMENT. REFER TO LANDSCAPE PLAN.

City of Coral Gables Zoning Code-Landscape Requirements: Art. 5 Section 5-1105 (B-2)

Lot Size = 49,000 sf	Required	Provided
i. Large Shade Tree : 1 per 5000 sf 49,000 sf / 5000 sf = 9.8 (10) Trees Req'd	10 (9.8)	10
ii. Palm & Medium Shade Trees: 2 per 5000 sf 49,000 sf / 5000 sf = 9.8 (10) x 2 = 20	20	20 (8 Trees + 12 palms)
iii. Shrubs. 15 per 5000 sf 49,000 sf / 5000 sf = 9.8 x 15 = 147 Req'd (min. ht. of 18", 30% Native)	131 40 (39.3)	582 (18"ht, min) 272
iv. Lawn grass. Lawn grass up to a max. of 60% of total lot area; 49,000 sf x .60 = 29,400 sf.	29,400 sf (max. allowable)	29,000 sf (St. Augustine)
v. Lawn grass in R.O.W. all unpaved surfaces adjoining the property on the r.o.w. shall be sodded.		
B. A min. of 2 Trees and 66% of the required shrub quantity shall be in front of the residence.	2 Trees 79 Shrubs	9 Trees 133+ Shrubs

Tree Survey List. 190 Casaurina Concourse Exist. to Remain									
Num	Botanical / Common Name	Disposition	HT	SPR	DBH	Condition	Notes	TPZ	
#1 QV	Quercus virginiana / Live Oak	Remain	25'	25'	13"	Good	In R/W	6' rad.	
#8 QV	Quercus virginiana / Live Oak	Remain	32'	35'	12.5"	Good	In R/W	6' rad.	
#10 QV	Quercus virginiana / Live Oak	Remain	22'	20'	6.5"	Good	In R/W	6' rad.	
#10A QV	Quercus virginiana / Live Oak	Remain	32'	44'	15.5"	Good	In R/W	6' rad.	
#102 RE	Roystonea elata / Royal Palm	Remain	20'	18'	14"	Good		3' rad.	
#103 RE	Roystonea elata / Royal Palm	Remain	50'	25'	18"	Good		3' rad.	
#104 CN	Cocos nucifera / Coconut Palm	Remain	45'	24'	9"	Good		3' rad.	
#105 PU	Pandanus utilis / Pandanus	Remain	15'	15'	4@ 7"	Good		3' rad.	
#109 CN	Cocos nucifera / Coconut Palm	Remain	45'	24'	9"	Good		3' rad.	
#110 CN	Cocos nucifera / Coconut Palm	Remain	45'	24'	9"	Good		3' rad.	
#111 CN	Cocos nucifera / Coconut Palm	Remain	45'	24'	9"	Good		3' rad.	

1

Plant List- Owner's Property					
Qty	Key	Botanical / Common Name	Specification	Native Y/N	Mitigation sf Prov'd
5	QV	Quercus virginiana / Live Oak	16' oa ht, 8' spr, 4" cal.	Yes	Large Tree 500 sf 3500 sf
3	SM	Swietenia mahagoni / Mahogany	16' oa ht, 8' spr, 4" cal.	Yes	Large Tree 500 sf 1500 sf
12	CD	Coccoloba diversifolia / Pigeon Plum	12' oa ht, 6' spr, 2" cal.	Yes	Med. Tree 300 sf 3600 sf
5	CES	Conocarpus e. sericeus / Silver Buttonwood	10' oa ht, 5' spr, 1.5" cal.	Yes	Small Tree 200 sf 1000 sf
					Native Tree Total = 9600 sf
7	CB	Calophyllum brasiliense / Beautyleaf	16' oa ht, 8' spr, 4" cal.	No	Large Tree 500 sf 3500 sf
4	CN	Cocos nucifera / Coconut Palm	24' oa ht, 12' CT	No	Large Palm 300 sf 1200 sf
4	PS	Phoenix sylvestris / Sylvester Date Palm	24' oa ht, 16' CT	No	Large Palm 300 sf 1200 sf
12	SP	Sabal palmetto / Sabal Palm	20', 16' oa hts	Yes	Med. Palm 200 sf 2400 sf
					Palm Total = 4800 sf
					Mitigation Total = 17,900 sf
2	SM	Swietenia mahagoni / Mahogany	12' oa ht, 6' spr, 2" cal.	Yes	Code Req'd Tree
2	CR	Clusia rosea / Pitch Apple	12' oa ht, 6' spr, 2" cal.	No	Code Req'd Tree
2	CU	Coccoloba uvifera / Seagrape	12' oa ht, 6' spr, 2" cal.	Yes	Code Req'd Tree
3	KF	Krugiodendron ferreum / Black Ironwood	12' oa ht, 6' spr, 2" cal.	Yes	Code Req'd Tree
1	CS	Cordia sebestena / Orange Geiger	12' oa ht, 6' spr, 2" cal.	Yes	Code Req'd Tree
8	VM	Veitchia montgomeriana / Veitchia Palm	20', 16' oa hts	No	Code Req'd Palm
4	DC	Dypsis cabadae / Cabada Palm	16' oa hts	No	Code Req'd Palm
8	LL	Ligustrum lucidium / Ligutrum Tree	8' ht, 8' spr.	No	Code Req'd Small Tree
168	CLG	Clusia guttifera / Small Leaf Clusia	6-7' ht, 3' spr, 25 gal.	No	
142	POM	Podocarpus macrophyllus / Podocarpus	5-6' ht, 2' spr, 25 gal.	No	
142	MYF	Myrcianthes fragrans / Simpson Stopper	30" ht, 18" spr, 7 gal.	Yes	
14	CAC	Capparis cynophallophora / Jamaican Caper	30" ht, 18" spr, 7 gal.	Yes	
116	PSL	Psychotria ligustifolia / Bahama Coffee	18" ht, 18" spr, 3 gal.	Yes	
582 Prov'd Shrubs, 272 Native					
8	BAM	Bambusa malingensis / Seabreeze Bamboo	18-20' oa ht, 15 gal.	No	
25	RHE	Rhapis excelsa / Lady Palm	5' oa ht, 3' spr.	No	
15	ALZ	Alpinia zerumbet / Green Shell Ginger	4' ht x 3' spr, 15 gal.	No	
48	NEC	Neomaraica coerulea / Blue Apostles' Iris	36" ht x 24" spr, 7 gal.	No	
13	PGL	Philodendron gloriosum / Gloriosum	24" ht, 24" spr, 7 gal.	No	
162	SEJ	Serissa japonicum / Cotoneaster	16" x 16" spr, 7 gal.	No	
210	FIM	Ficus microcarpa / Green Island Ficus	12" x 12" spr, 3 gal.	No	
155	LIM	Liriope muscarie, E.G. / Evergreen Giant Liriope	12" x 12" spr, 1 gal.	No	
100	PEO	Peperomia obtusifolia / Peperomia-variegated	8" x 8" spr, 3 gal.	No	

1

Plant List - Right of Way					
Qty	Key	Botanical / Common Name	Specification	Native Y/N	Mitigation sf Prov'd
2	QV	Quercus virginiana / Live Oak	16' oa ht, 8' spr, 4" cal.	Yes	Large Tree 500 sf 3500 sf
154	FIM	Ficus microcarpa / Green Island Ficus	12" x 12" spr, 3 gal.	No	

1

FERNANDEZ

190 Casaurina Concourse,
Coral Gables, Florida

SEAL

H.L. Martin, Landscape Architect, P.A.
LC# 26000404 LA #0001722
5965 SW 38th Street, Miami, Florida 33155
305.790-4372, himartinu@bellsouth.net

Herbert Lester Martin, Landscape Architect

BALLI-TRAUTMAN ARCHITECTS LLC -AA26002968

GIORGIO LUIGI BALLI -AR13951
DAVID SCOTT TRAUTMAN -AR15045

REVISIONS

NO.	DESC	DATE
1	R/W Plant List	03.18.21

PRELIM

SEAL



JOB NUMBER:

CHECKED BY: DT

ISSUE DATE: Issue Date

SCALE: AS NOTED

SHEET TITLE

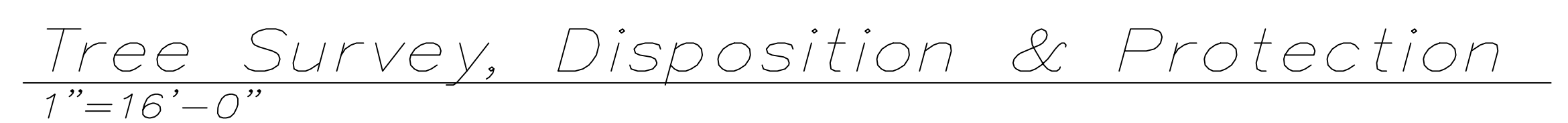
LANDSCAPE NOTES, DETAILS & LEGEND

SHEET NUMBER

LA-2

COPYRIGHT BALLI-TRAUTMAN ARCHITECTS, LLC
1533 SUNSET DRIVE SUITE 101, CORAL GABLES, FL 33143

- LA-1 Landscape Plan
- LA-2 Landscape Notes, Details & Legend
- LA-3 Tree Survey / Disposition & Protection Plan
- LA-4 Tree Survey List

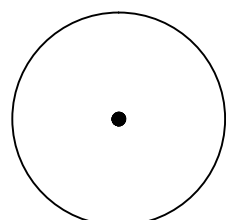


COPYRIGHT BALLI-TRAUTMAN ARCHITECTS, LLC
1533 SUNSET DRIVE SUITE 101, CORAL GABLES, FL 33143

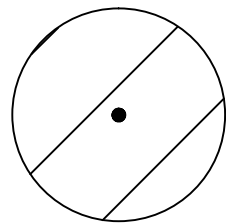
LA-1 Landscape Plan
LA-2 Landscape Notes,
Details & Legend
LA-3 Tree Survey /
Disposition &
Protection Plan
LA-4 Tree Survey List

Tree Survey List. 190 Casaurina Concourse									
Num	Botanical / Common Name	Disposition	Description			Condition	Notes	TPZ	Mitigation
			HT	SPR	DBH				
#1 QV	Quercus virginiana / Live Oak	Remain	25'	25'	13"	Good	In R/W	6' rad.	
#2 LC	Livistona chinensis / Chinese Fan Palm	--Remove--	18'	14'	8"	Good			154 sf
#3 LC	Livistona chinensis / Chinese Fan Palm	--Remove--	18'	14'	8"	Good			154 sf
#4 CES	Conocarpus e. Sericeus / Silver Buttonwood	--Remove--	18'	14'	3,6,10.5"	Fair	4 together		154 sf
#5 CES	Conocarpus e. Sericeus / Silver Buttonwood	--Remove--	18'	9'	5"	Fair			64 sf
#6 CES	Conocarpus e. Sericeus / Silver Buttonwood	--Remove--	18'	12'	5,7"	Fair			113 sf
#7 CES	Conocarpus e. Sericeus / Silver Buttonwood	--Remove--	18'	12'	5,2"	Fair			113 sf
#8 QV	Quercus virginiana / Live Oak	Remain	32'	35'	12.5"	Good	In R/W	6' rad.	
#9 QV	Quercus virginiana / Live Oak	--Remove--	28'	29'	9"	Good	In R/W	6' rad.	314 sf
#10 QV	Quercus virginiana / Live Oak	Remain	22'	20'	6.5"	Good	In R/W		
#10A QV	Quercus virginiana / Live Oak	Remain	32'	44'	15.5"	Good	In R/W	6' rad.	
#11 PE	Ptychosperma elegans / Alexander Palm	--Remove--	18'	10'	4"	Good			79 sf
#12 PE	Ptychosperma elegans / Alexander Palm	--Remove--	18'	10'	4"	Good			79 sf
#13 PE	Ptychosperma elegans / Alexander Palm	--Remove--	18'	10'	4"	Good			79 sf
#14 LC	Livistona chinensis / Chinese Fan Palm	--Remove--	18'	14'	8"	Good			154 sf
#15 DL	Dypsis lutescens / Areca Palm	--Remove--	14'	14'	2' cluster	Good			N/A
#16 DRM	Dracaena marginata / Dracaena	--Remove--	14'	10'	2' cluster	Good	Large accent shrub		N/A
#17-21 PE	Ptychosperma elegans / Alexander Palm (5)	--Remove--	18'	10'	4"	Good	79 sf x 5 =395 sf		395 sf
#22 UNK	Unknown	--Remove--	18'	17'	7"	Good		3' rad.	227 sf
#23 PR	Phoenix reclinata / Senegal Island Date Palm	--Remove--	33'	28'	4@6"	Good			615 sf
#24 UNK	Unknown	--Remove--	16'	25'	6.5"	Good			491 sf
#25-33 PE	Ptychosperma elegans / Alexander Palm (9)	--Remove--	18'	10'	4"	Good	79 sf x 9 =711 sf		711 sf
#34-36 PE	Ptychosperma elegans / Alexander Palm (3)	--Remove--	18'	10'	4"	Good	79 sf x 3 =237 sf		237 sf
#37 CEN	Cestrum nocturnum / Night Blooming Jasmine	--Remove--	9'	6'	2' cluster	Good	Large shrub		N/A
#38 PHR2	Phoenix roebelenii / Pygmy Date Palm (2)	--Remove--	9'	12'	2@4"	Good			113 sf
#39 PHR	Phoenix roebelenii / Pygmy Date Palm	--Remove--	7'	7'	4"	Good			39 sf
#40 PHR	Phoenix roebelenii / Pygmy Date Palm	--Remove--	10'	7'	4"	Good			39 sf
#41 LC	Livistona chinensis / Chinese Fan Palm	--Remove--	18'	14'	8"	Good			154 sf
#42 LC	Livistona chinensis / Chinese Fan Palm	--Remove--	18'	14'	8"	Good			154 sf
#43 LC	Livistona chinensis / Chinese Fan Palm	--Remove--	18'	14'	8"	Good			154 sf
#44 LC	Livistona chinensis / Chinese Fan Palm	--Remove--	18'	14'	8"	Good			154 sf
#45 LC	Livistona chinensis / Chinese Fan Palm	--Remove--	18'	14'	8"	Good			154 sf
#46 LC	Livistona chinensis / Chinese Fan Palm	--Remove--	18'	14'	8"	Good			154 sf
#47 LC	Livistona chinensis / Chinese Fan Palm	--Remove--	18'	14'	8"	Good			154 sf
#48 LC	Livistona chinensis / Chinese Fan Palm	--Remove--	18'	14'	8"	Good			154 sf
#49 LC	Livistona chinensis / Chinese Fan Palm	--Remove--	18'	14'	8"	Good			154 sf
#50 LC	Livistona chinensis / Chinese Fan Palm	--Remove--	18'	14'	8"	Good			154 sf
#51 LC	Livistona chinensis / Chinese Fan Palm	--Remove--	18'	14'	8"	Good			154 sf
#52 LC	Livistona chinensis / Chinese Fan Palm	--Remove--	18'	14'	8"	Good			154 sf
#53 PE	Ptychosperma elegans / Alexander Palm	--Remove--	18'	10'	4"	Good			79 sf
#54-57 PE	Ptychosperma elegans / Alexander Palm (4)	--Remove--	18'	10'	4"	Good	79 sf x 4 =316 sf		316 sf
#58,59 PE	Ptychosperma elegans / Alexander Palm (2)	--Remove--	18'	10'	4"	Good	79 sf x 5 =395 sf		395 sf
#60 CV	Callistemon viminalis / Bottlebrush	--Remove--	14'	18'	5,3,2,8,6"	Poor	Storm damage/blown over.		254 sf
#61 PR2	Phoenix roebelenii / Pygmy Date Palm (2)	--Remove--	9'	15'	2@4"	Good			177 sf
#62 PE	Ptychosperma elegans / Alexander Palm	--Remove--	18'	10'	4"	Good			79 sf
#63 MI	Mangifera indica / Mango	--Remove--	14'	6'	2"	Good			28 sf
#64-75 PE	Ptychosperma elegans / Alexander Palm (11)	--Remove--	18'	10'	4"	Good	79 sf x 11 =869 sf		869 sf
#76 SR	Syagrus romanzoffiana / Queen Palm	--Remove--	20'	15'	8"	Good			177 sf
#77 SM	Swietenia mahagoni / Mahogany	--Remove--	24'	16'	6.5"	Good			201 sf
#78 DRM	Dracaena marginata / Dracaena	--Remove--	10'	7'	2' cluster	Good	Large accent shrub		N/A
#79 SM	Swietenia mahagoni / Mahogany	--Remove--	36'	42'	20"	Good	1385 sf x 2 =2770 sf		2770 sf
#80-84 PE	Ptychosperma elegans / Alexander Palm (5)	--Remove--	18'	10'	4"	Good	79 sf x 5 =395 sf		395 sf
#85-94 PE	Ptychosperma elegans / Alexander Palm (10)	--Remove--	18'	10'	4"	Poor	79 sf x 10 =790 sf		790 sf
#95-100 PE	Ptychosperma elegans / Alexander Palm (6)	--Remove--	18'	10'	4"	Good	79 sf x 6 =474 sf		474 sf
#101 PE	Ptychosperma elegans / Alexander Palm	--Remove--	18'	10'	4"	Good			79 sf
#102 RE	Roystonea elata / Royal Palm	Remain	20'	18'	14"	Good		3' rad.	
#103 RE	Roystonea elata / Royal Palm	Remain	50'	25'	18"	Good		3' rad.	
#104 CN	Cocos nucifera / Coconut Palm	Remain	45'	24'	9"	Good		3' rad.	
#105 PU	Pandanus utilis / Pandanus	Remain	15'	15'	4@ 7"	Good		3' rad.	
#106 CN	Cocos nucifera / Coconut Palm	--Remove--	45'	24'	9"	Good			452 sf
#107 CN	Cocos nucifera / Coconut Palm	--Remove--	45'	24'	9"	Good			452 sf
#108 CN	Cocos nucifera / Coconut Palm	--Remove--	45'	24'	9"	Good			452 sf
#109 CN	Cocos nucifera / Coconut Palm	Remain	45'	24'	9"	Good		3' rad.	
#110 CN	Cocos nucifera / Coconut Palm	Remain	45'	24'	9"	Good		3' rad.	
#111 CN	Cocos nucifera / Coconut Palm	Remain	45'	24'	9"	Good		3' rad.	
#112 DL	Dypsis lutescens / Areca Palm	--Remove--	18'	15'	2' cluster	Good			N/A
#113-117 PE	Ptychosperma elegans / Alexander Palm (5)	--Remove--	18'	16'	5 @ 3"	Good	Dense cluster in pool deck planter		201 sf
#118 LC	Livistona chinensis / Chinese Fan Palm	--Remove--	16'	14'	8"	Good			154 sf
#119 PR	Phoenix reclinata / Senegal Island Date Palm	--Remove--	25'	26'	5 @ 7"	Good			530 sf
#120 PS	Plumeria species /Frangiponi	--Remove--	28'	20'	6"	Good			314 sf

#121-125 PE	Ptychosperma elegans / Alexander Palm (5)	--Remove--	18'	10'	4"	Good	79 sf x 5 =395 sf		395 sf
#126 PE	Ptychosperma elegans / Alexander Palm	--Remove--	18'	10'	4"	Good			79 sf
#127 PE	Ptychosperma elegans / Alexander Palm	--Remove--	18'	10'	4"	Good			79 sf
#128-130 PE	Ptychosperma elegans / Alexander Palm (3)	--Remove--	18'	10'	4"	Good	79 sf x 3 =237 sf		237 sf
#131 PE	Ptychosperma elegans / Alexander Palm	--Remove--	13'	10'	4"	Good			79 sf
#132 LC	Livistona chinensis / Chinese Fan Palm	--Remove--	16'	14'	8"	Good			154 sf
#133 PE	Ptychosperma elegans / Alexander Palm	--Remove--	24'	10'	4"	Good			79 sf
#134 PR	Phoenix reclinata / Senegal Island Date Palm	--Remove--	20'	18'	3' cluster	Good		3' rad.	254 sf
#135 LC	Livistona chinensis / Chinese Fan Palm	--Remove--	18'	14'	8"	Good			154 sf
#136 DL	Dypsis lutescens / Areca Palm	--Remove--	8'	8'	2' cluster	Good			N/A
#137-148 PE	Ptychosperma elegans / Alexander Palm (11)	--Remove--	18'	25'	4"	Good	Dense group along CLF	3' rad.	491 sf



Existing Tree / Palm to be removed.

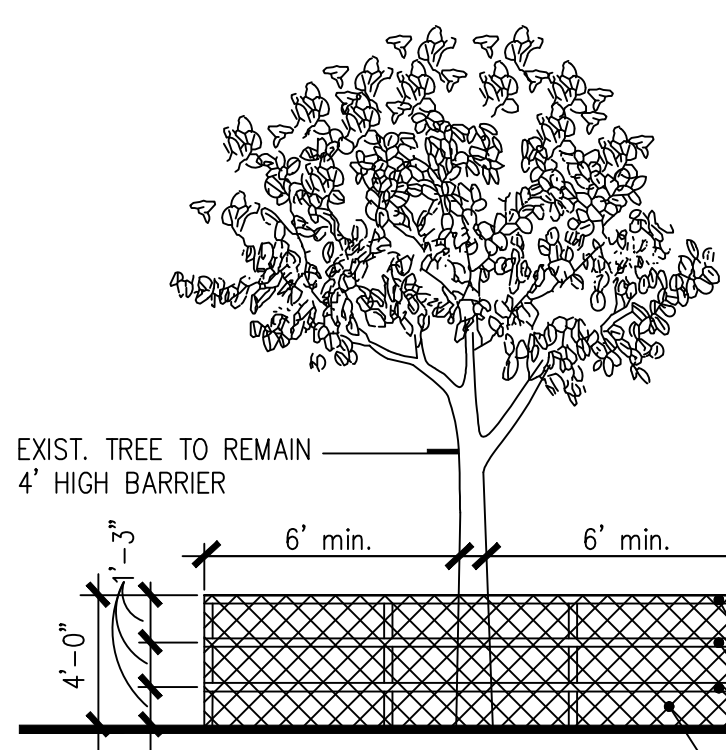


Existing Tree / Palm to remain.

Total Canopy
Sq ft to be removed 17,811 sf

Total SF
To Be Removed 17,811 sf

Mitigation Trees
Native Req'd 50% =8905 sf
Native Trees
Prov'd = 9600 sf
Mitigation Trees
30% Max. Palms = 5343 sf
Palms Prov'd = 4800 sf



WOODEN STAKES (2"x4"x5' MIN.) on 5' CENTERS TO SUPPORT RAIL FENCING.

BARRIER TO FORM A CONTINUOUS BARRIER AROUND THE TREE OR GROUP OF TREES

THREE ROWS OF RAIL FENCING (2"x4") SPACED EQUALLY TO BE PLACED AROUND ALL EXISTING TREES TO REMAIN.

CONTRACTOR TO INSTALL PROTECTIVE FENCE BARRIER AROUND ALL EXISTING TREES TO REMAIN-AT THE START OF THE PROJECT- FENCE TO REMAIN IN PLACE THROUGHOUT THE DURATION OF CONSTRUCTION.

CONTRACTOR SHALL TAKE EXTRA CARE DURING EARTHWORK & UTILITY OPERATIONS TO PROTECT ALL EXIST. TREES-& SHALL BE RESPONSIBLE TO REPLACE ANY TREES DAMAGED DURING CONSTRUCTION.

2" x 4" PT WD POSTS & RAILS. POST SPACING AT 5'-0" MAX.

TENSAR SAFETY BARRIER FLORESCENT ORANGE EX 2050

CITY OF CORAL GABLES TREE PROTECTION BARRICADE DETAIL

N.T.S.

Notes:

- 1) Tree Protection Barricade dimensions are measured from the outside of the trunk.
- 2) Tree Protection Barricades are adjusted where necessary to account for buildings, adjacent sidewalks, & street/curb.
- 3) No disturbance to soil or disposal of any building material/waste is permitted within the tree protection zone.
- 4) Barricades to remain in place throughout the duration of construction activities.
- 5) Barricades to be attached to existing CLF's, WD fences or concrete walls where applicable.
- 6) Barricades to be located no closer than 2' from edge of pavement.
- 7) TPZ dimensions are 6' from face of trunk for exist. trees to remain on site or in the R/W. 3' for exist. palms.

- LA-1 Landscape Plan
- LA-2 Landscape Notes, Details & Legend
- LA-3 Tree Survey / Disposition & Protection Plan
- LA-4 Tree Survey List

FERNANDEZ

SEAL

190 Casaurina Concourse,
Coral Gables, Florida



H.L. Martin, Landscape Architect, P.A.
LCA# 26000404 LA #0001722
5965 SW 38th Street, Miami, Florida 33155
305.790-4372, himartin@bellsouth.net

Herbert Lester Martin, Landscape Architect

BALLI-TRAUTMAN ARCHITECTS LLC -AA26002968

GIORGIO LUIGI BALLI -AR13951
DAVID SCOTT TRAUTMAN -AR15045

REVISIONS

NO.	DESC	DATE

PRELIM

SEAL



JOB NUMBER:

CHECKED BY:

DT

ISSUE DATE:

Issue Date

SCALE:

AS NOTED

SHEET TITLE

TREE SURVEY LIST

SHEET NUMBER

LA-4

COPYRIGHT BALLI-TRAUTMAN ARCHITECTS, LLC
1533 SUNSET DRIVE SUITE 101, CORAL GABLES, FL 33143