



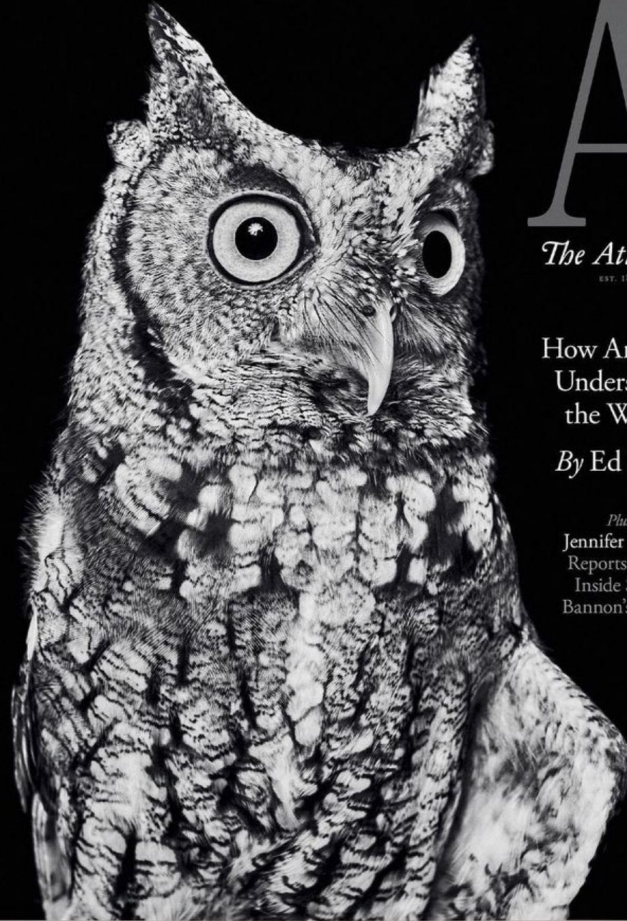
Pelican Harbor

S E A B I R D S T A T I O N

City of Coral Gables Commission Meeting Presentation
May 19, 2026

Meet Mowgli

JULY/AUGUST 2022
THEATLANTIC.COM



A

The Atlantic
EST. 1857

How Animals
Understand
the World

By Ed Yong

Plus:

Jennifer Senior
Reports From
Inside Steve
Bannon's Head



Compassion

Barn Owl Rescue

February 2026 on Next Door

- Only 5 native owls in FL
- Year-round resident
- 3.5' wingspan
- Sustainable rodenticide alternative
- PHSS has treated a total of 46 Barn Owls



What to do When you Find an Injured Animal



[HOME](#)

[ABOUT](#)

[SUPPORT US](#)

[CAPITAL CAMPAIGN](#)

[GIFTS](#)

[EXPERIENCES](#)

[GET INVOLVED](#)

[NEWS](#)

[GET WILDLIFE HELP](#)

OUR WORK NEVER STOPS

Rescuing Miami's Native Wildlife Since 1980

[DONATE NOW](#)



What to do When you Find an Injured Animal

CLICK AN IMAGE TO NAVIGATE

CALL OR TEXT US AT 305-751-9840



WILDLIFE EMERGENCIES



BABY ANIMAL HELP



RESOURCES & REFERRALS

We are open 365 days a year and field hundreds of calls offering guidance on reneating, species identification, and referrals for non-native species.

If you feel comfortable containing an animal, you can bring it directly to us, or we can reach out to our volunteers, or send an Uber!

Overnight drop-off cages also available.

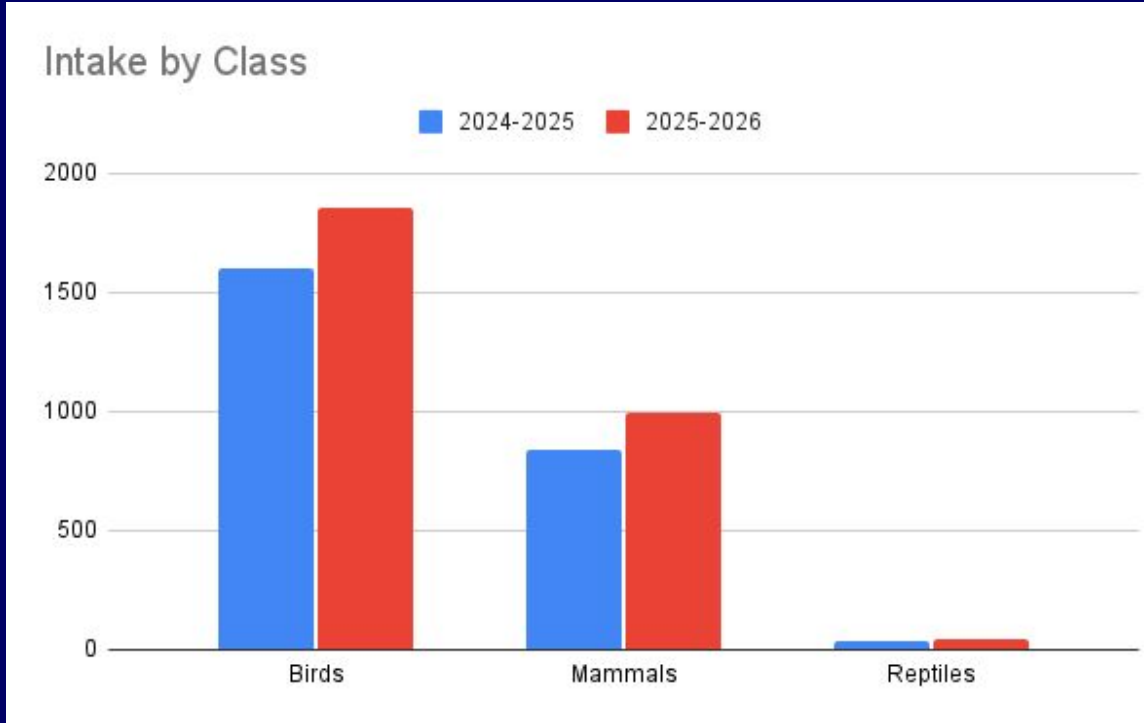
Would the City of Coral Gables consider adding Pelican Harbor to its website as a reference for sick, injured, and orphaned native wildlife?

Our Wildlife Clinic Today

Until 1996, PHSS treated only Brown Pelicans. We now treat over 2,500 animals a year of about 150 different species, including birds, mammals, and reptiles.



Wildlife Data



Ambassador Mowgli
fostering an orphaned
Eastern Screech Owlet

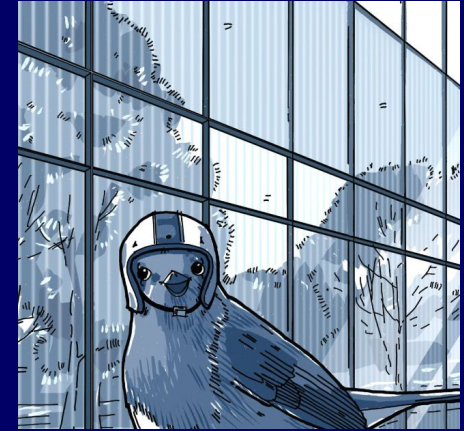
Reasons for Admission: Hook and Line Injuries



Reasons for Admission: Poisoning



Reasons for Admission: Window Collisions



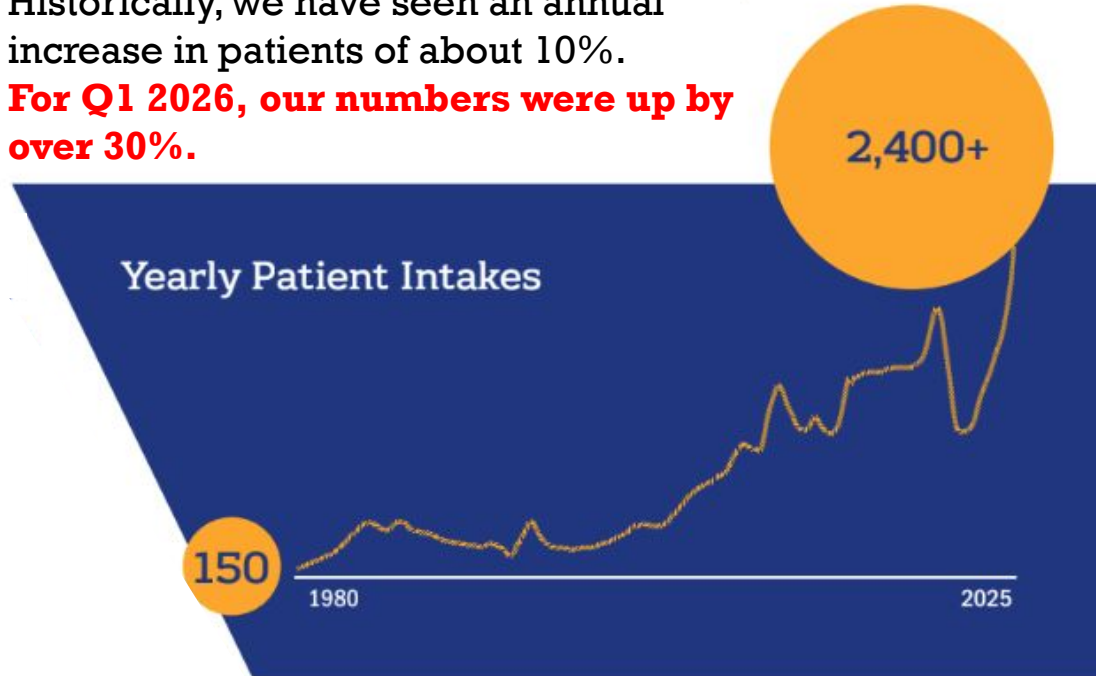
Bird Safe Glass
Etched
Coated
Ceramic enamel
Surface Decals



Growing Patient Need

Historically, we have seen an annual increase in patients of about 10%.

For Q1 2026, our numbers were up by over 30%.





Community Engagement

Last Year PHSS Led:

- 51 Public Releases of Recovered Patients
- 45 Community Events
- 39 Onsite Tours
- 37 School and Library Presentations
- 19 Seabird Cruises
- 7 Corporate Volunteer Days



Education and Community Outreach in 2025



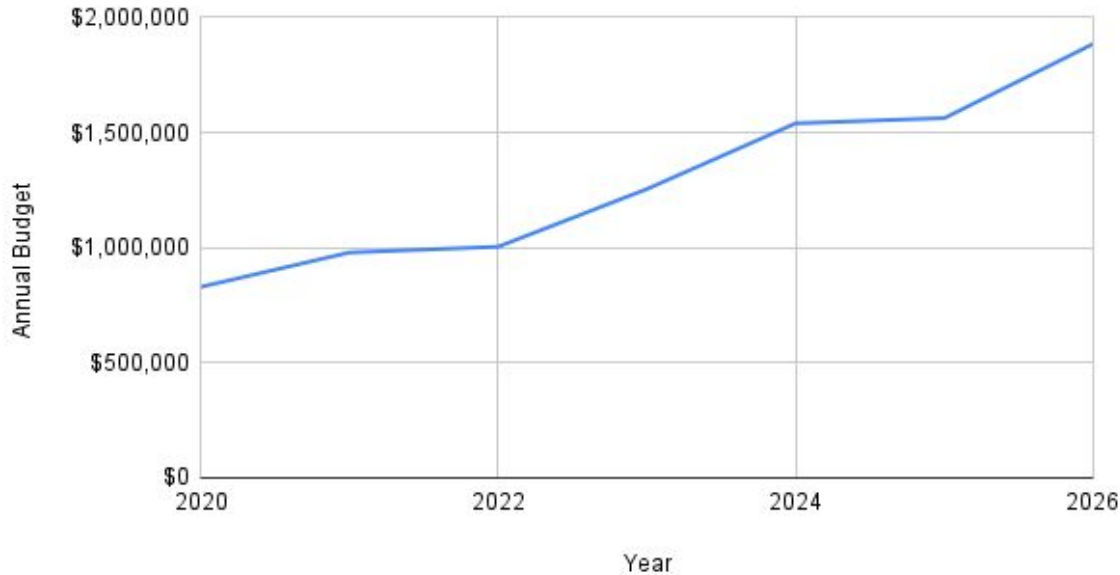
of people reached via...

+6 million	Social Media
810,000	Webpage Visits
114,258	Tabling at Community Events
905	Public Releases
2,040	School Presentations
281	Fundraisers
578	Seabirds on the Bay Cruises
118	Civic Group and Non-Profit Presentations
401	On-Site Tours
150	Natural History Speaker Series
62	Volunteer Orientations
6,928,793	TOTAL # OF PEOPLE REACHED

Growth



Operating Expenses



Since 2020, our annual Operating Budget has grown 227%, from \$829,145 to **\$1,885,222 in 2026.**



Operations Fundraising and Community Support



THIS GIVE MIAMI DAY,
HELP US HELP THEM

PHSS ranked #1 during Give Miami Day 2025 for the number of individual donors for a mid-sized non-profit, and was in the top 10 city-wide.



Record-breaking Pelican Party fundraising gala in March 2026 attended by both Mayors raised \$630K.



Expansion



Expansion



Current 950-sf building built by Miami-Dade County for PHSS in 1992



New, nearly 8,000-sf wildlife hospital and education center that is nearly complete.



Current and Future Building



Entry



Intake Desk



Current and Future Building



Clinic



Laundry Room



New Wildlife Hospital and Education Center



Our Staff



In addition to approximately 100 Volunteers and 35 Interns

Connection



[Link to Video](#)



WAYS TO HELP



Donate

- ▶ Make a one-time or monthly recurring gift
- ▶ Create a Facebook fundraiser
- ▶ Donate appreciated assets
- ▶ Shop our PHSS merchandise
- ▶ Visit our Amazon Wishlist
- ▶ Support our Capital Campaign
- ▶ Join our Legacy Society



Get Involved

- ▶ Adopt an Ambassador Animal
- ▶ Volunteer
 - ▶ On-site
 - ▶ Operation Rescue and Release
 - ▶ Education
- ▶ Animal Care Internships
- ▶ Book a Behind-the-Scenes Tour
- ▶ Attend a Sunset Cruise, Speaker Series, Pelican Party, and more!



Spread the Word

- ▶ Sign up for our emails and quarterly newsletters
- ▶ Follow us on social media:



@seabirdstation



@pelicanharbor



Seabird Station



Coral Gables and PHSS

Patient Intake from Coral Gables

2023 = 80 patients

2024 = 89 patients

2025 = 100 patients

About a 10% increase per year.

PHSS has approximately 500 donors with a primary address in Coral Gables.

PHSS Operational Costs

\$4,120 Daily Operating Costs

\$548 Average Cost per Patient





Coral Gables and PHSS

Would the City of Coral Gables consider a gift of \$5,000 to PHSS?



Donation amounts to PHSS from Miami-Dade County's 34 municipalities:

Miami Beach	\$5,000
North Bay Village	\$5,000
South Miami	\$5,000
Surfside	\$3,000
Sunny Isles	\$2,000
Cutler Bay	\$1,000
Doral	\$1,000



Thank You



www.pelicanharbor.org