

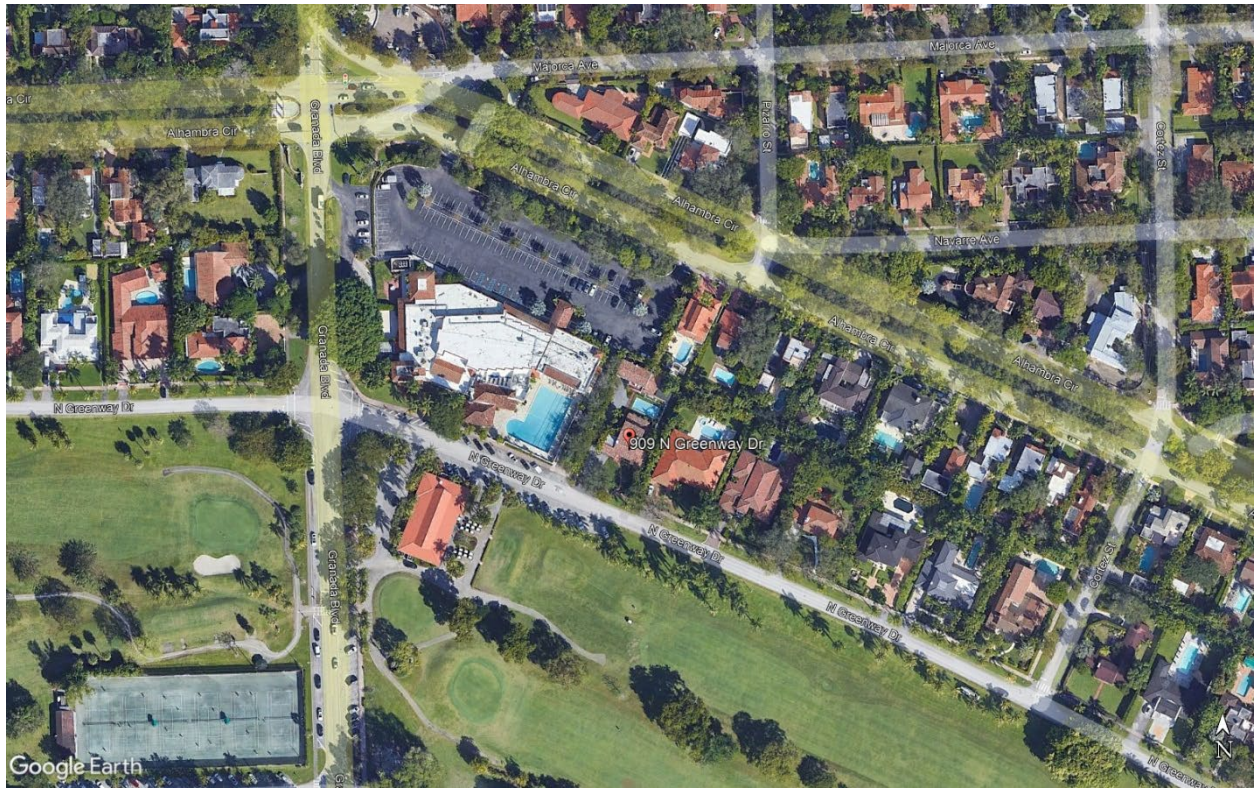
# **WHAA**

PHOTOGRAPHS OF EXISTING CONDITIONS AND STREETScape  
PROXIMATE TO THE PROPOSED WORK.

909 N GREENWAY DR, CORAL GABLES, FLORIDA

## **WHAA**

2920 PONCE DE LEON BLVD CORAL GABLES, FLORIDA 33134-6811 (305) 770-6100 INFO@WHAIV.US  
STATE OF FLORIDA No. AA26003053



AERIAL VIEW



FRONT ELEVATION – FACING N GREENWAY DR



FRONT ELEVATION – FACING N GREENWAY DR

**WHAA**

2920 PONCE DE LEON BLVD CORAL GABLES, FLORIDA 33134-6811 (305) 770-6100 INFO@WHAIV.US  
STATE OF FLORIDA No. AA26003053



SIDE ELEVATION



SIDE ELEVATION

**WHA A**

2920 PONCE DE LEON BLVD CORAL GABLES, FLORIDA 33134-6811 (305) 770-6100 INFO@WHAIV.US  
STATE OF FLORIDA No. AA26003053



REAR ELEVATION



REAR ELEVATION

**WHAA**

2920 PONCE DE LEON BLVD CORAL GABLES, FLORIDA 33134-6811 (305) 770-6100 INFO@WHAIV.US  
STATE OF FLORIDA No. AA26003053



SIDE ELEVATION



SIDE ELEVATION

**WHAA**

2920 PONCE DE LEON BLVD CORAL GABLES, FLORIDA 33134-6811 (305) 770-6100 INFO@WHAIV.US  
STATE OF FLORIDA No. AA26003053



POOL

**WHAA**

2920 PONCE DE LEON BLVD CORAL GABLES, FLORIDA 33134-6811 (305) 770-6100 INFO@WHAIV.US  
STATE OF FLORIDA No. AA26003053



FRONT ELEVATION – ACCESSORY STRUCTURE



SIDE ELEVATION – ACCESSORY STRUCTURE

**WHAA**

2920 PONCE DE LEON BLVD CORAL GABLES, FLORIDA 33134-6811 (305) 770-6100 INFO@WHAIV.US  
STATE OF FLORIDA No. AA26003053





REAR ELEVATION – ACCESSORY STRUCTURE

**WHAA**

2920 PONCE DE LEON BLVD CORAL GABLES, FLORIDA 33134-6811 (305) 770-6100 INFO@WHAIV.US  
STATE OF FLORIDA No. AA26003053



CONTEXT MAP

**WHAA**

2920 PONCE DE LEON BLVD CORAL GABLES, FLORIDA 33134-6811 (305) 770-6100 INFO@WHAIV.US  
STATE OF FLORIDA No. AA26003053



CONTEXT IMAGE- 901 N. GREENWAY DR



CONTEXT IMAGE – 835 N GREENWAY DR

**WHAA**



CONTEXT IMAGE – 827 N GREENWAY DR



CONTEXT IMAGE – 904 ALHAMBRA CIR

**WHAA**



CONTEXT IMAGE – CORAL GABLES COUNTRY CLUB

**WHAA**

2920 PONCE DE LEON BLVD CORAL GABLES, FLORIDA 33134-6811 (305) 770-6100 INFO@WHAIV.US  
STATE OF FLORIDA No. AA26003053