



ADDITIONS AND ALTERATIONS TO
 CITY OF CORAL GABLES
 427 BILTMORE WAY BUILDING



SECOND FLOOR PLAN 

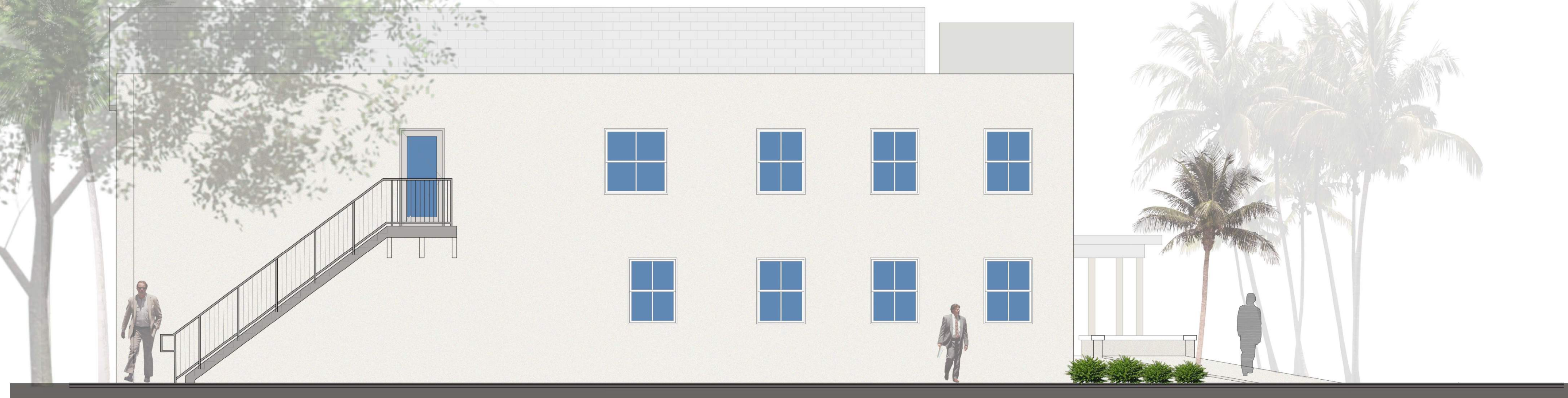
ADDITIONS AND ALTERATIONS TO
CITY OF CORAL GABLES
427 BILTMORE WAY BUILDING



SOUTH ELEVATION



WEST ELEVATION



NORTH ELEVATION



EAST ELEVATION