

EXHIBIT "A"

PROPOSED MIXED USE DEVELOPMENT FOR:



The Henry

CORAL GABLES

4015 LAGUNA STREET
CORAL GABLES, FLORIDA

B E H A R • F O N T & P A R T N E R S . P . A .

ARCHITECT
ASSOCIATES OF LION LINO
CORAL GABLES, FLORIDA 33146
TEL: 305-462-8241
FAX: 305-462-8242
PROJECT No. 15078
11.03.2010

OWNER :
TERRACE MOUNTAIN
INVESTORS
4015 LAGUNA STREET
CORAL GABLES, FLORIDA 33146

ARCHITECT :
BEHAR • FONT &
PARTNERS, P.A.
4533 PONCE DE LEON BLVD
CORAL GABLES, FLORIDA 33146
TEL: 305-462-8241
FAX: 305-462-8242
FL REGISTRATION No. : AA0002451

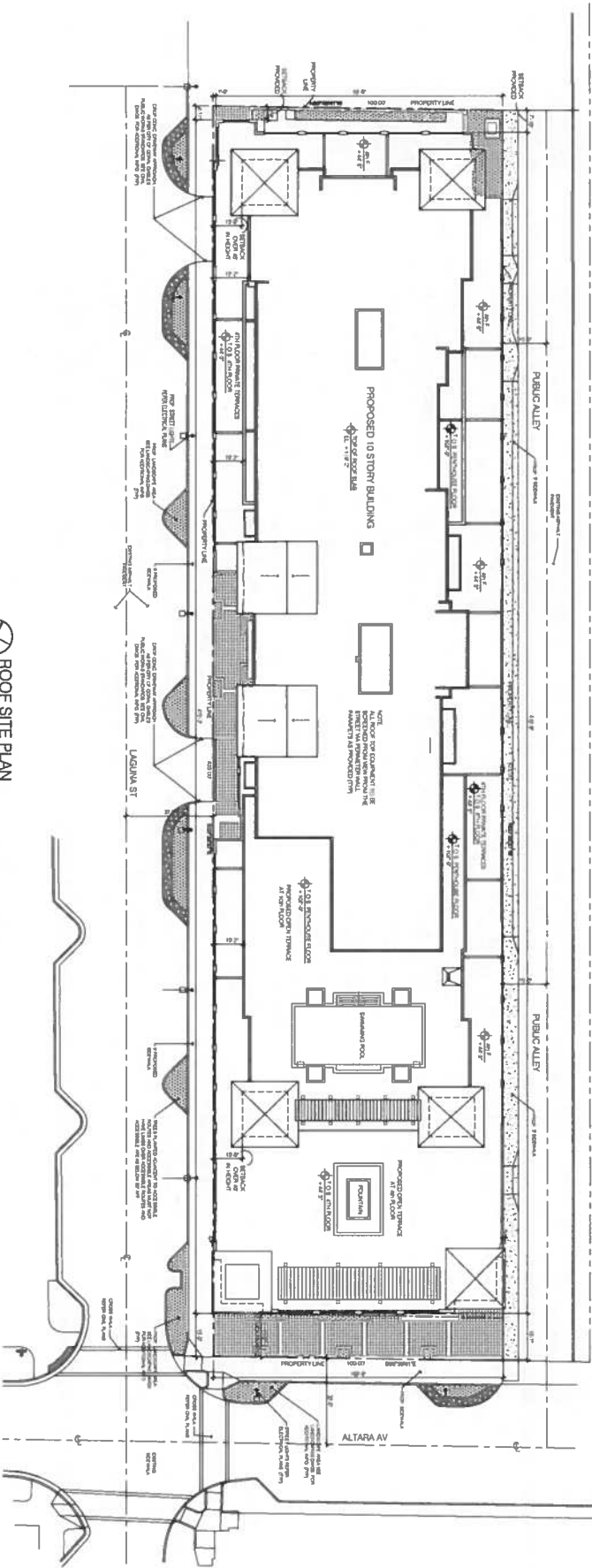
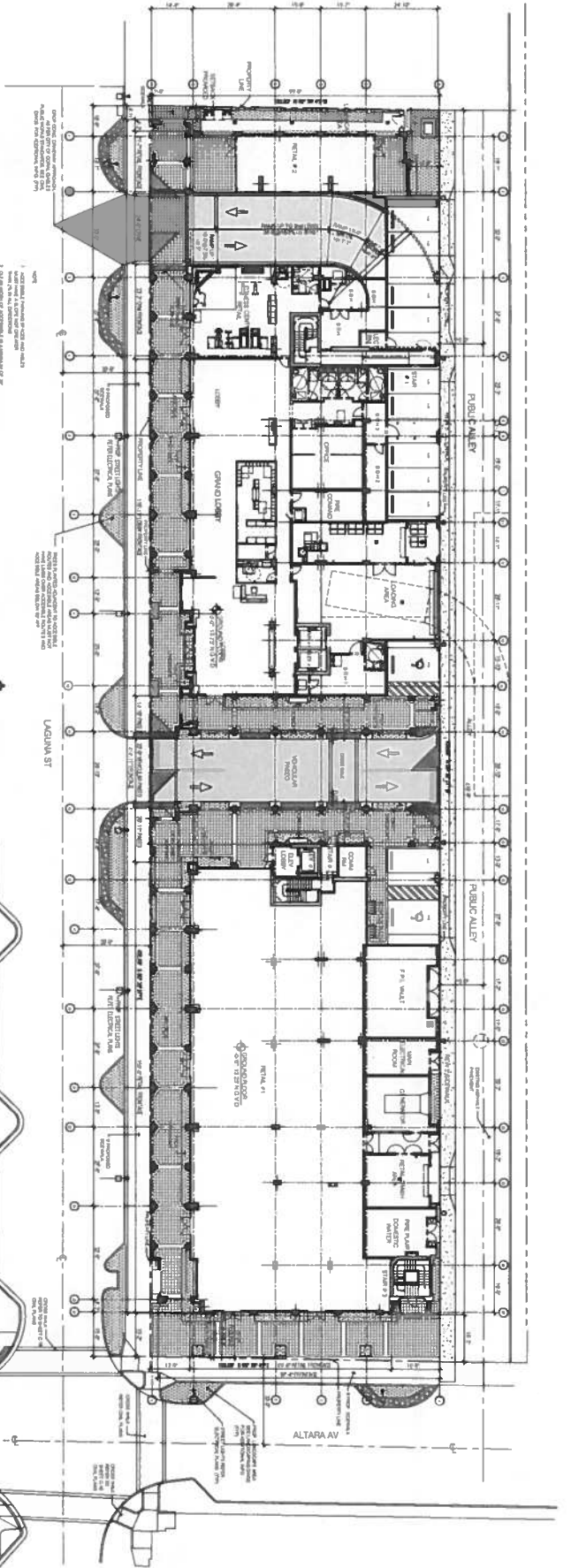
CIVIL :
SCHWEBKE SHISKIN
3240 CORPORATE WAY
MIRAMAR, FLORIDA 33025
TEL: 305-652-7010
FAX: 305-652-8284
FL REGISTRATION No. CA # 87

ELECTRICAL :
VITAL ENGINEERING
7100 SW 98th AVENUE SUITE 202
MIAMI, FLORIDA 33173
TEL: 305-412-6000
FAX: 305-412-6005
FL REGISTRATION No. PE: 16390

**MECHANICAL &
PLUMBING
RPU CONSULTING
ENGINEERS, INC.**
4977 SW 74th COURT
MIAMI, FLORIDA 33155
TEL: 305-688-2131
FAX: 305-688-0131
FL REGISTRATION No. PE: 16395

STRUCTURAL :
DE LOS REYES
ENGINEERING
TEL: 305-477-8628
8728 NW 24th STREET #1
DORAL, FLORIDA 33172
FL REGISTRATION PE No. 33112

**LANDSCAPE
ARCHITECT :**
WITKIN HULTS
DESIGN GROUP
307 SOUTH 21 AVE
HOLLYWOOD, FLORIDA 33020
TEL: 954-922-9881
FAX: 954-922-9881
FL REGISTRATION No. LA0000889



BEHAR · FONT & PARTNERS · P. A.

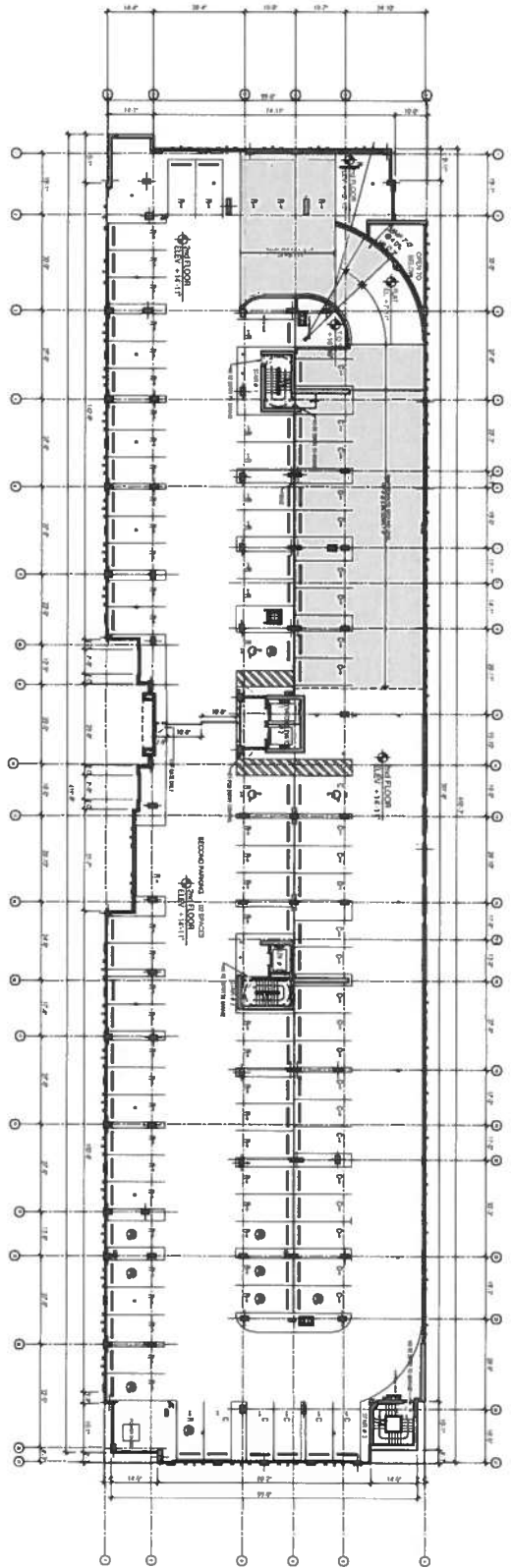
PROPOSED MIXED USE DEVELOPMENT
"THE HENRY"
 4018 LAGUNA STREET
 CORAL GABLES, FLORIDA



ARCHITECTURE
 PLANNING
 INTERIORS

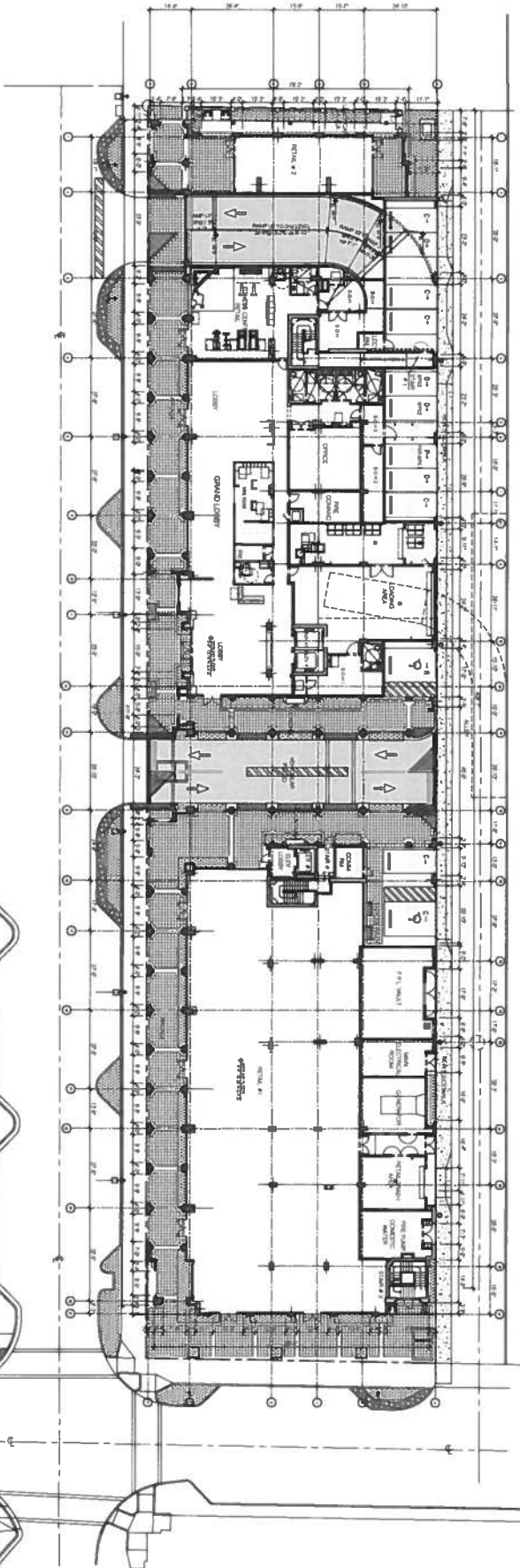
4514339
 STATE OF FLORIDA
 PROFESSIONAL ENGINEER
 ROBERT B. SMITH
 12000 N.W. 11TH AVENUE
 SUITE 100
 CORAL GABLES, FLORIDA 33134
 P.O. BOX 12000
 CORAL GABLES, FLORIDA 33134
 TEL: (305) 441-1111
 FAX: (305) 441-1112
 WWW.BEHPARTNERS.COM

15/078
 SITE PLAN
 A-1.00



⊗ SECOND FLOOR PLAN (PARKING GARAGE)
 SCALE 1/8" = 1'-0"

NOV 15, 2011
 ARCHITECTURAL FLOOR PLAN
 401 LAGUNA STREET
 CORAL GABLES, FLORIDA



⊗ GROUND FLOOR PLAN
 SCALE 1/8" = 1'-0"

NOV 15, 2011
 ARCHITECTURAL FLOOR PLAN
 401 LAGUNA STREET
 CORAL GABLES, FLORIDA

NOV 15, 2011
 ARCHITECTURAL FLOOR PLAN
 401 LAGUNA STREET
 CORAL GABLES, FLORIDA

BEHR • FONT & PARTNERS . P . A .

PROPOSED MIXED USE DEVELOPMENT
 "THE HENRY"
 4015 LAGUNA STREET
 CORAL GABLES, FLORIDA

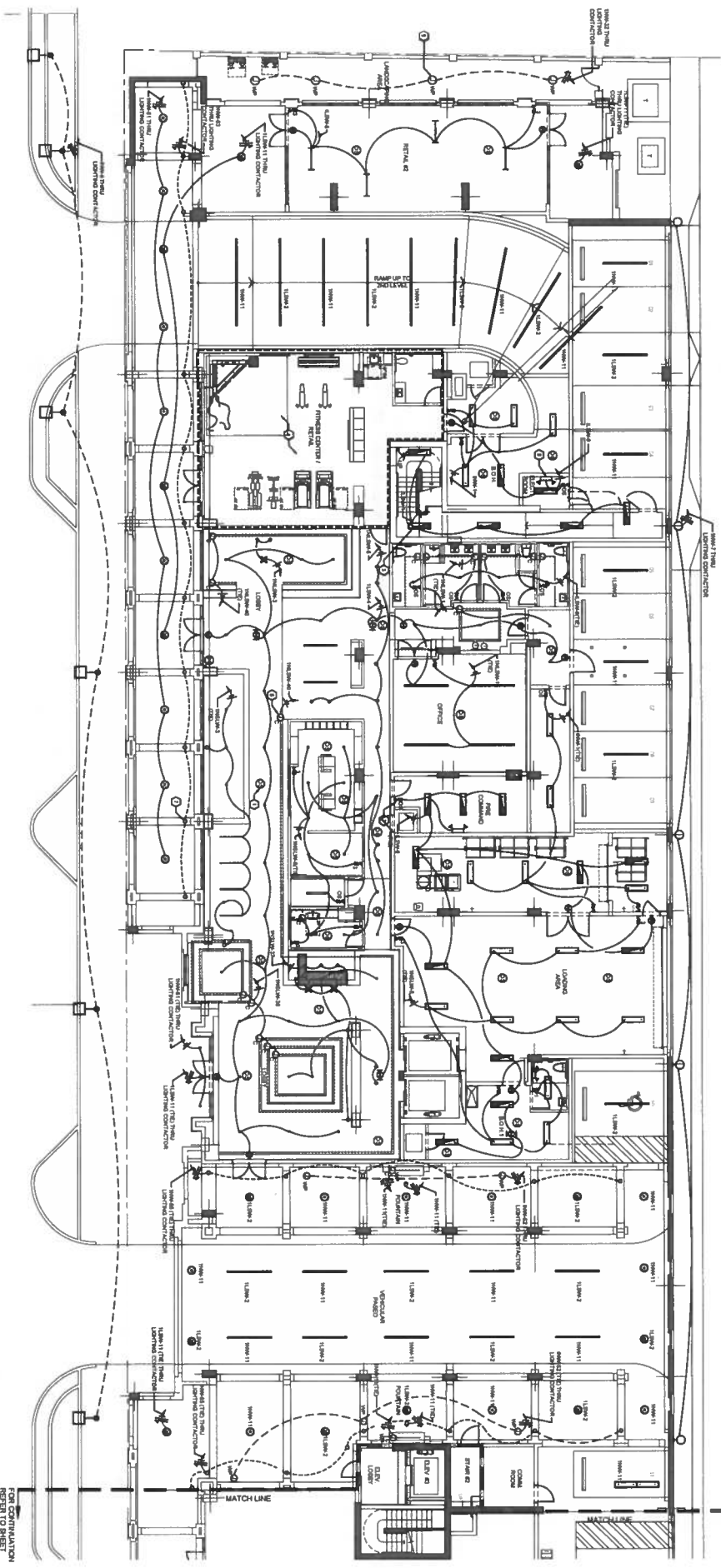


ARCHITECTURE
 PLANNING
 INTERIORS
 BEHR • FONT & PARTNERS . P . A .
 142 LAGUNA STREET
 CORAL GABLES, FLORIDA 33134
 TEL: (305) 441-1414
 FAX: (305) 441-1415
 WWW.BEHR-FONT.COM

14208
 GRAND FLOOR
 & 2ND FLOOR PLAN
 A-1-01

- NOTES FOR LIGHTING:**
1. FROM EXISTING LIGHTING, REFER TO THE EXISTING LIGHTING PLAN FOR THE LOCATION OF EXISTING LIGHTING FIXTURES.
 2. ALL NEW LIGHTING SHALL BE INSTALLED IN ACCORDANCE WITH THE IBC AND THE IESNA RECOMMENDED PRACTICES FOR LIGHTING DESIGN.
 3. ALL NEW LIGHTING SHALL BE INSTALLED IN ACCORDANCE WITH THE IBC AND THE IESNA RECOMMENDED PRACTICES FOR LIGHTING DESIGN.
 4. ALL NEW LIGHTING SHALL BE INSTALLED IN ACCORDANCE WITH THE IBC AND THE IESNA RECOMMENDED PRACTICES FOR LIGHTING DESIGN.
 5. ALL NEW LIGHTING SHALL BE INSTALLED IN ACCORDANCE WITH THE IBC AND THE IESNA RECOMMENDED PRACTICES FOR LIGHTING DESIGN.
 6. ALL NEW LIGHTING SHALL BE INSTALLED IN ACCORDANCE WITH THE IBC AND THE IESNA RECOMMENDED PRACTICES FOR LIGHTING DESIGN.
 7. ALL NEW LIGHTING SHALL BE INSTALLED IN ACCORDANCE WITH THE IBC AND THE IESNA RECOMMENDED PRACTICES FOR LIGHTING DESIGN.
 8. ALL NEW LIGHTING SHALL BE INSTALLED IN ACCORDANCE WITH THE IBC AND THE IESNA RECOMMENDED PRACTICES FOR LIGHTING DESIGN.
 9. ALL NEW LIGHTING SHALL BE INSTALLED IN ACCORDANCE WITH THE IBC AND THE IESNA RECOMMENDED PRACTICES FOR LIGHTING DESIGN.
 10. ALL NEW LIGHTING SHALL BE INSTALLED IN ACCORDANCE WITH THE IBC AND THE IESNA RECOMMENDED PRACTICES FOR LIGHTING DESIGN.

- KEY NOTES:**
1. WALL OR CEILING MOUNTED MULTI-TURNOUT OCCUPANCY SENSITIVE LIGHTING SHALL BE INSTALLED IN ALL OFFICES AND WORK AREAS.
 2. ALL NEW LIGHTING SHALL BE INSTALLED IN ACCORDANCE WITH THE IBC AND THE IESNA RECOMMENDED PRACTICES FOR LIGHTING DESIGN.
 3. ALL NEW LIGHTING SHALL BE INSTALLED IN ACCORDANCE WITH THE IBC AND THE IESNA RECOMMENDED PRACTICES FOR LIGHTING DESIGN.
 4. ALL NEW LIGHTING SHALL BE INSTALLED IN ACCORDANCE WITH THE IBC AND THE IESNA RECOMMENDED PRACTICES FOR LIGHTING DESIGN.
 5. ALL NEW LIGHTING SHALL BE INSTALLED IN ACCORDANCE WITH THE IBC AND THE IESNA RECOMMENDED PRACTICES FOR LIGHTING DESIGN.
 6. ALL NEW LIGHTING SHALL BE INSTALLED IN ACCORDANCE WITH THE IBC AND THE IESNA RECOMMENDED PRACTICES FOR LIGHTING DESIGN.
 7. ALL NEW LIGHTING SHALL BE INSTALLED IN ACCORDANCE WITH THE IBC AND THE IESNA RECOMMENDED PRACTICES FOR LIGHTING DESIGN.
 8. ALL NEW LIGHTING SHALL BE INSTALLED IN ACCORDANCE WITH THE IBC AND THE IESNA RECOMMENDED PRACTICES FOR LIGHTING DESIGN.
 9. ALL NEW LIGHTING SHALL BE INSTALLED IN ACCORDANCE WITH THE IBC AND THE IESNA RECOMMENDED PRACTICES FOR LIGHTING DESIGN.
 10. ALL NEW LIGHTING SHALL BE INSTALLED IN ACCORDANCE WITH THE IBC AND THE IESNA RECOMMENDED PRACTICES FOR LIGHTING DESIGN.



⊗ GROUND LEVEL LIGHTING PLAN SECTOR A
 SCALE 1/8" = 1'-0"



FOR CONTINUATION, REFER TO SHEET E-1.011

FOR CONTINUATION, REFER TO SHEET E-1.012

BEHAR • FONT & PARTNERS . P . A .

PROPOSED MIXED USE DEVELOPMENT
 "THE HENRY"
 4015 LAGUNA STREET
 CORAL GABLES, FLORIDA



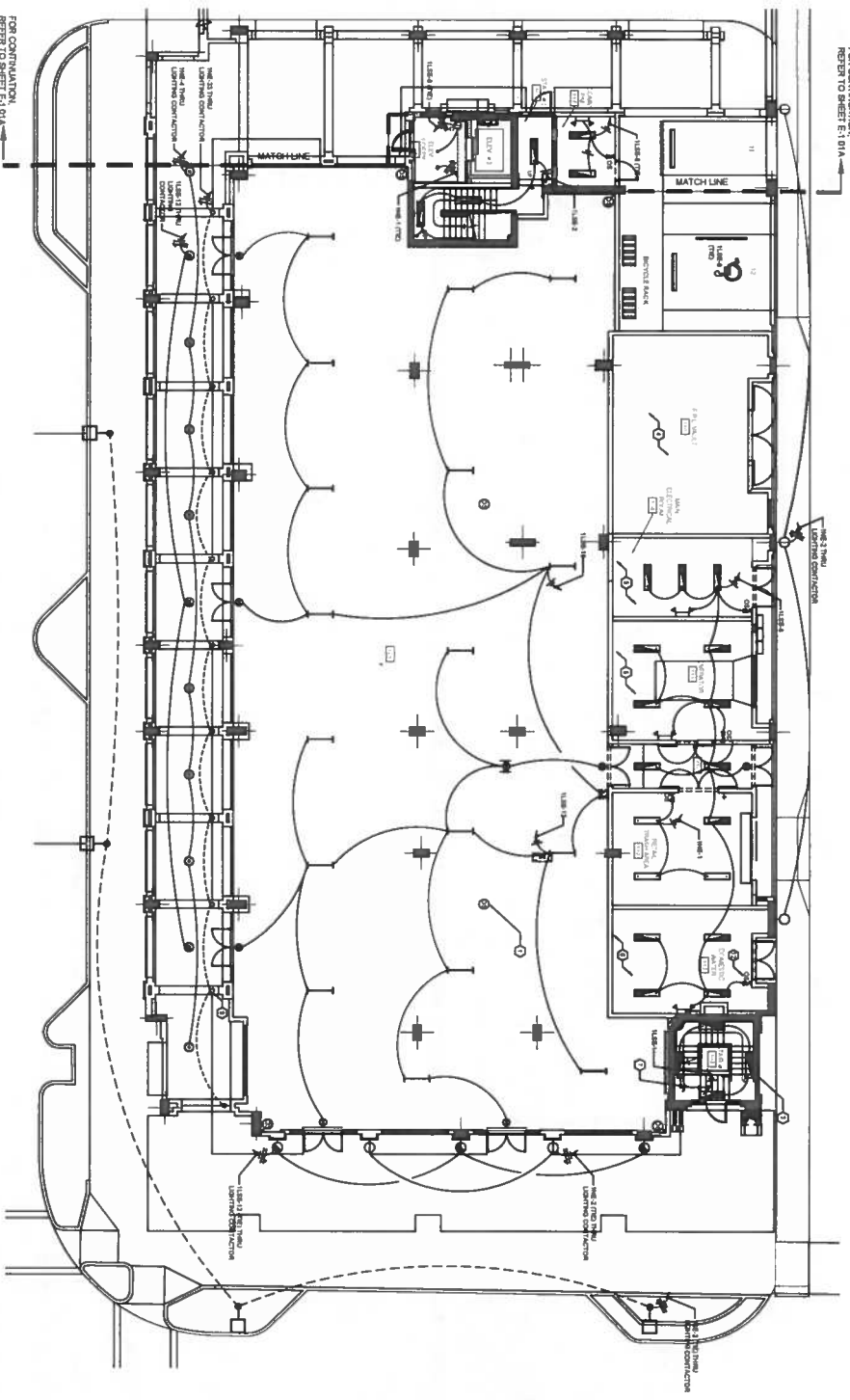
ARCHITECTURE
 PLANNING
 INTERIORS

E-1.011A

KL&E
 LAB

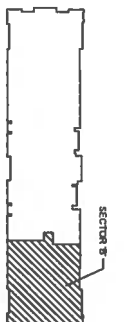
DATE: 12/28/17
 DRAWN BY: KL&E
 CHECKED BY: KL&E
 PROJECT NO: 17-0000000000

- KEY NOTES:**
- 1) SHALL USE CEILING MOUNTING AND TYPICAL HANGING HEIGHTS AS SHOWN UNLESS OTHERWISE NOTED. ALL LIGHT FIXTURES SHALL BE INSTALLED IN ACCORDANCE WITH THE MANUFACTURER'S SPECIFICATIONS AND THE IBC. ALL LIGHT FIXTURES SHALL BE INSTALLED IN ACCORDANCE WITH THE MANUFACTURER'S SPECIFICATIONS AND THE IBC. ALL LIGHT FIXTURES SHALL BE INSTALLED IN ACCORDANCE WITH THE MANUFACTURER'S SPECIFICATIONS AND THE IBC.
 - 2) ALL LIGHT FIXTURES SHALL BE INSTALLED IN ACCORDANCE WITH THE MANUFACTURER'S SPECIFICATIONS AND THE IBC. ALL LIGHT FIXTURES SHALL BE INSTALLED IN ACCORDANCE WITH THE MANUFACTURER'S SPECIFICATIONS AND THE IBC. ALL LIGHT FIXTURES SHALL BE INSTALLED IN ACCORDANCE WITH THE MANUFACTURER'S SPECIFICATIONS AND THE IBC.
 - 3) ALL LIGHT FIXTURES SHALL BE INSTALLED IN ACCORDANCE WITH THE MANUFACTURER'S SPECIFICATIONS AND THE IBC. ALL LIGHT FIXTURES SHALL BE INSTALLED IN ACCORDANCE WITH THE MANUFACTURER'S SPECIFICATIONS AND THE IBC. ALL LIGHT FIXTURES SHALL BE INSTALLED IN ACCORDANCE WITH THE MANUFACTURER'S SPECIFICATIONS AND THE IBC.
 - 4) ALL LIGHT FIXTURES SHALL BE INSTALLED IN ACCORDANCE WITH THE MANUFACTURER'S SPECIFICATIONS AND THE IBC. ALL LIGHT FIXTURES SHALL BE INSTALLED IN ACCORDANCE WITH THE MANUFACTURER'S SPECIFICATIONS AND THE IBC. ALL LIGHT FIXTURES SHALL BE INSTALLED IN ACCORDANCE WITH THE MANUFACTURER'S SPECIFICATIONS AND THE IBC.
 - 5) ALL LIGHT FIXTURES SHALL BE INSTALLED IN ACCORDANCE WITH THE MANUFACTURER'S SPECIFICATIONS AND THE IBC. ALL LIGHT FIXTURES SHALL BE INSTALLED IN ACCORDANCE WITH THE MANUFACTURER'S SPECIFICATIONS AND THE IBC. ALL LIGHT FIXTURES SHALL BE INSTALLED IN ACCORDANCE WITH THE MANUFACTURER'S SPECIFICATIONS AND THE IBC.
 - 6) ALL LIGHT FIXTURES SHALL BE INSTALLED IN ACCORDANCE WITH THE MANUFACTURER'S SPECIFICATIONS AND THE IBC. ALL LIGHT FIXTURES SHALL BE INSTALLED IN ACCORDANCE WITH THE MANUFACTURER'S SPECIFICATIONS AND THE IBC. ALL LIGHT FIXTURES SHALL BE INSTALLED IN ACCORDANCE WITH THE MANUFACTURER'S SPECIFICATIONS AND THE IBC.
 - 7) ALL LIGHT FIXTURES SHALL BE INSTALLED IN ACCORDANCE WITH THE MANUFACTURER'S SPECIFICATIONS AND THE IBC. ALL LIGHT FIXTURES SHALL BE INSTALLED IN ACCORDANCE WITH THE MANUFACTURER'S SPECIFICATIONS AND THE IBC. ALL LIGHT FIXTURES SHALL BE INSTALLED IN ACCORDANCE WITH THE MANUFACTURER'S SPECIFICATIONS AND THE IBC.
 - 8) ALL LIGHT FIXTURES SHALL BE INSTALLED IN ACCORDANCE WITH THE MANUFACTURER'S SPECIFICATIONS AND THE IBC. ALL LIGHT FIXTURES SHALL BE INSTALLED IN ACCORDANCE WITH THE MANUFACTURER'S SPECIFICATIONS AND THE IBC. ALL LIGHT FIXTURES SHALL BE INSTALLED IN ACCORDANCE WITH THE MANUFACTURER'S SPECIFICATIONS AND THE IBC.
 - 9) ALL LIGHT FIXTURES SHALL BE INSTALLED IN ACCORDANCE WITH THE MANUFACTURER'S SPECIFICATIONS AND THE IBC. ALL LIGHT FIXTURES SHALL BE INSTALLED IN ACCORDANCE WITH THE MANUFACTURER'S SPECIFICATIONS AND THE IBC. ALL LIGHT FIXTURES SHALL BE INSTALLED IN ACCORDANCE WITH THE MANUFACTURER'S SPECIFICATIONS AND THE IBC.
 - 10) ALL LIGHT FIXTURES SHALL BE INSTALLED IN ACCORDANCE WITH THE MANUFACTURER'S SPECIFICATIONS AND THE IBC. ALL LIGHT FIXTURES SHALL BE INSTALLED IN ACCORDANCE WITH THE MANUFACTURER'S SPECIFICATIONS AND THE IBC. ALL LIGHT FIXTURES SHALL BE INSTALLED IN ACCORDANCE WITH THE MANUFACTURER'S SPECIFICATIONS AND THE IBC.



⊗ GROUND LEVEL LIGHTING PLAN SECTOR B
 SCALE 1/8" = 1'-0"

⊗ KEY PLAN
 SCALE N.T.S.



BEHAR • FONT & PARTNERS . P . A .

PROPOSED MIXED USE DEVELOPMENT
"THE HENRY"
 4016 LAGUNA STREET
 CORAL GABLES, FLORIDA

VITAL
 engineering
 700 SW 99 Ave
 Suite 100
 Plant # 3325
 Ocala, FL 32113
 Phone: 352-237-1111
 Fax: 352-237-1112
 www.vitaleng.com
 vitaleng.com

ARCHITECTURE
 PLANNING
 INTERIORS

E-1.01B

12/20/17
 KIMELVA
 JAK

TITLE SHEET
 THE HENRY
 4016 LAGUNA STREET
 CORAL GABLES, FL 33134
 DATE: 12/20/17
 DRAWN BY: KIMELVA
 CHECKED BY: JAK