



# *COVID 19*



## COMMISSION BRIEFING



# COMMISSION BRIEFING

---

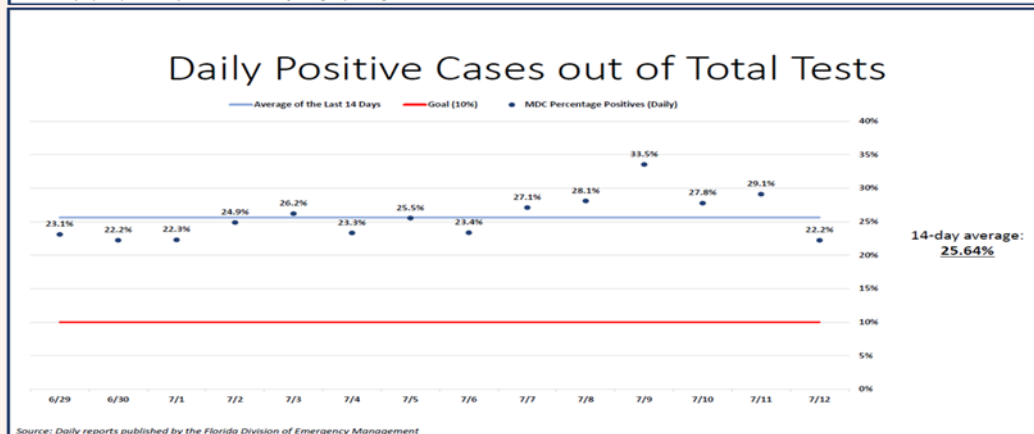
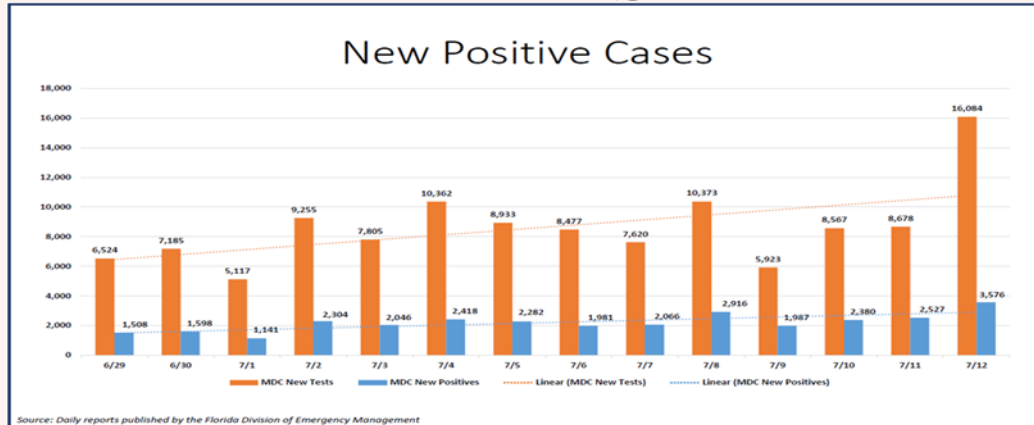
- May 4<sup>th</sup> County and City commenced Re-Opening Phases
  - City has participated in weekly Municipal Meeting
  - Bi-Weekly area hospital meetings
  - City Business Community Meetings
  - Monitored Available Data
  - Public Educations Campaigns

# COMMISSION BRIEFING

2

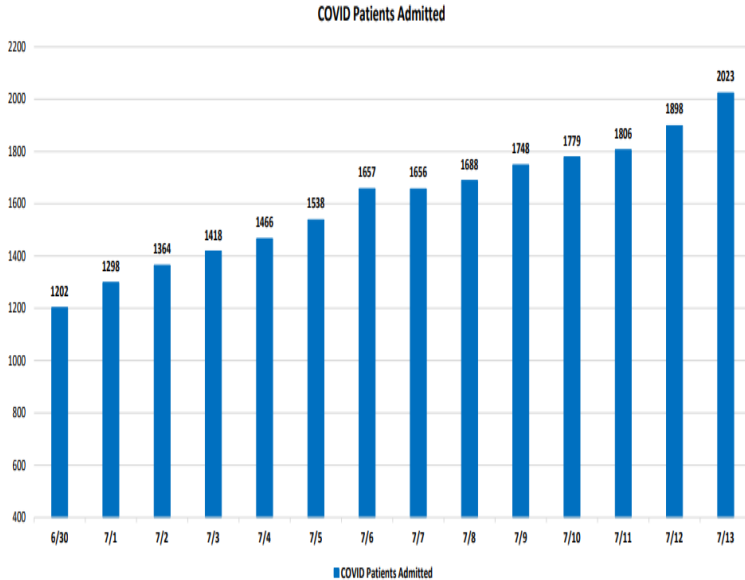
2

As of the week of June 10, Miami Dade has experienced an upswing in positive cases

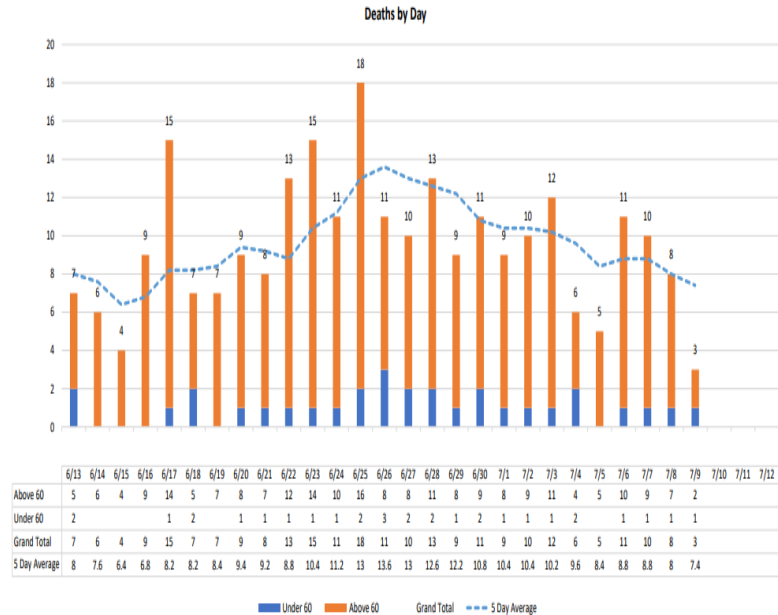


# COMMISSION BRIEFING

## COVID-19 Admitted Patients



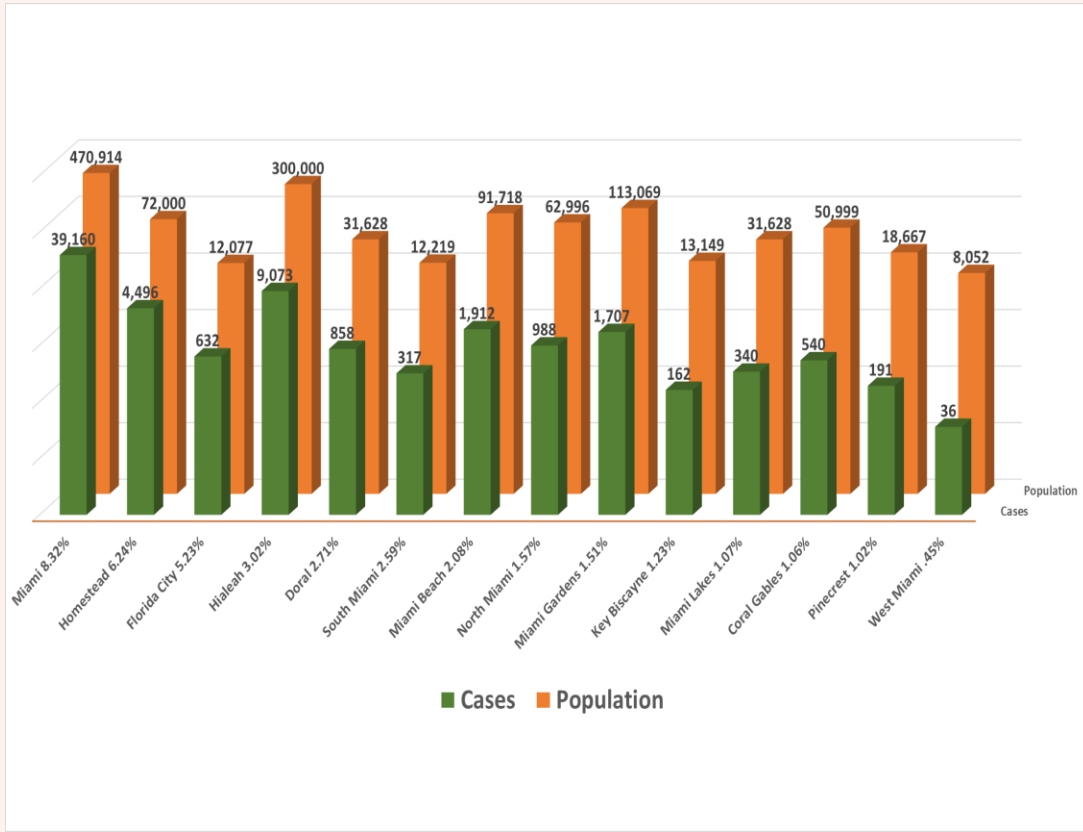
## Medical Examiner



The 5 day rolling average does not include the last 3 days to allow for the ME to certify recent deaths  
Source: Miami-Dade Medical Examiner

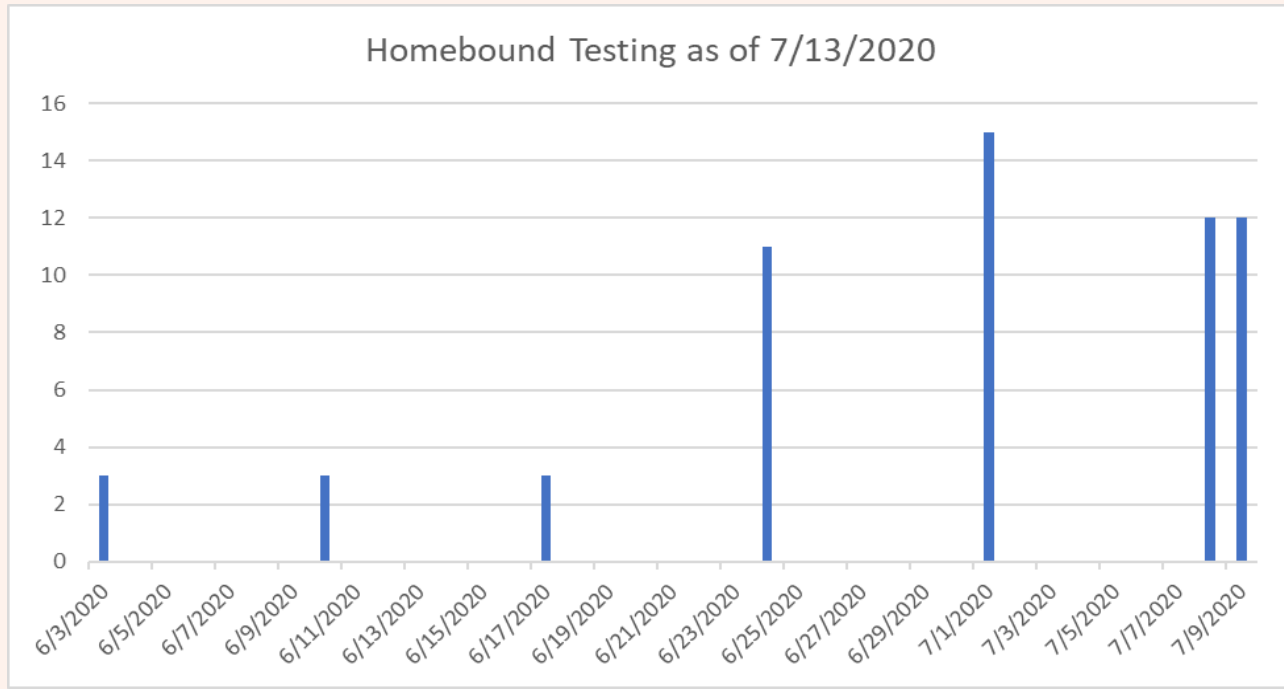
Source: Self-reported by hospitals as required by Emergency Order 18-20

# CITY OF CORAL GABLES



# COMMISSION BRIEFING

- Homebound Testing has continued as usual
- Testing scheduled weekly based on demand



# COMMISSION BRIEFING

---

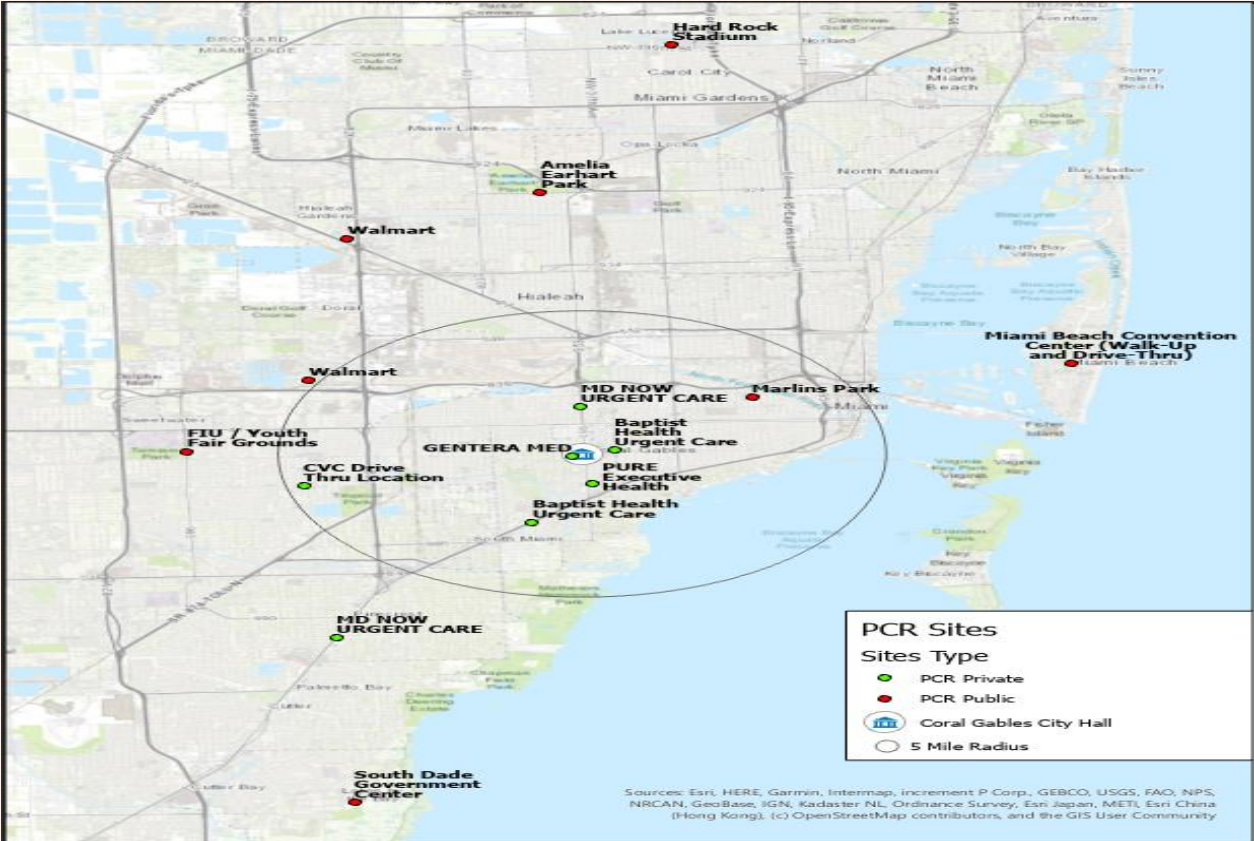
## COMMUNITY TESTING

# COMMISSION BRIEFING

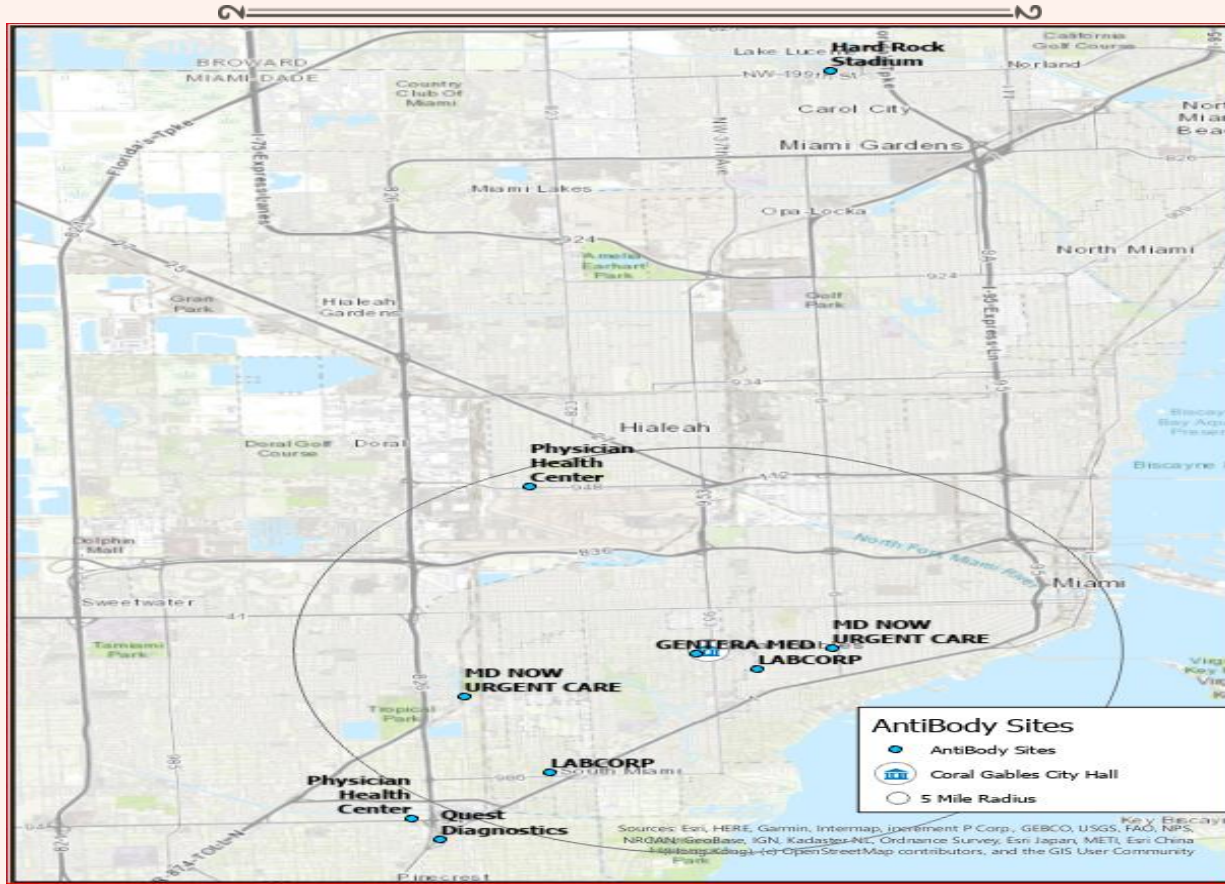
- City's Test Site infrastructure remains in place
  - Tested total of 1,183 residents
    - Positive Test- 2 residents
    - Averaged 35-40% no show
      - Cost per Test - \$75.00
    - Personnel Cost: \$ 2,000 a Day
  - City personnel needed per day: 15
- Final full-costing for 30 Days of operations: \$120,047.00



# COMMUNITY TESTING SITES



# COMMUNITY TESTING SITES



# COMMUNITY TESTING

---

- Directed by Commission to seek alternative where residents may pay for a COVID 19 PCR Swab Test if site needed to be re-opened
- Lab may provide service for a fee
  - Cost per Test will be \$95.00 to include administrative cost
  - Residents would be able to schedule on the on-line portal
  - Payment for the Test accomplished on-line and will be non-refundable
  - Available testing days per week based on lab availability
- May commence testing on site a week from today

# COMMISSION BRIEFING

## SUMMARY

- City continue to participate in all regional collaborative meeting toward COVID response
- Continue to provide Public Protective Actions for residents and workforce
- Call Center is staffed to assist residence with any inquires
- Homebound Testing remains operational
- Continue to evaluate Community Needs

### COVID Guidelines for Coral Gables Senior Residents



While Coral Gables has begun its reopening plan, cases of COVID-19 continue to rise at alarming rates. All residents **must** take necessary precautions, especially those **aged 65+** or with underlying medical conditions.

According to the Centers for Disease Control (CDC), **8 out of 10 deaths** reported in the U.S. have been in adults 65 years and older.



If you are displaying symptoms consistent with COVID-19, please stay home and contact your healthcare provider or dial 911 immediately.

It's important to note social distancing doesn't mean social isolation.

#### Older adults and at-risk individuals should:



Stay home, if possible;



Wash your hands often;



Avoid close contact with others – especially younger family members (Keeping a distance of 6-ft or about two arms' length);



Wear a facemask covering your nose and mouth (mandatory).

If you need help or have questions about the virus, call the COVID Hotline at 305-460-5401. For more information on virtual Adult Activity Center classes, contact the center at [aainfo@coralgables.com](mailto:aainfo@coralgables.com) or 305-461-6765.

Together, we can keep our City Beautiful – and all its residents – safe and healthy!

For more information, visit [coralgables.com/covid](https://www.coralgables.com/covid)