

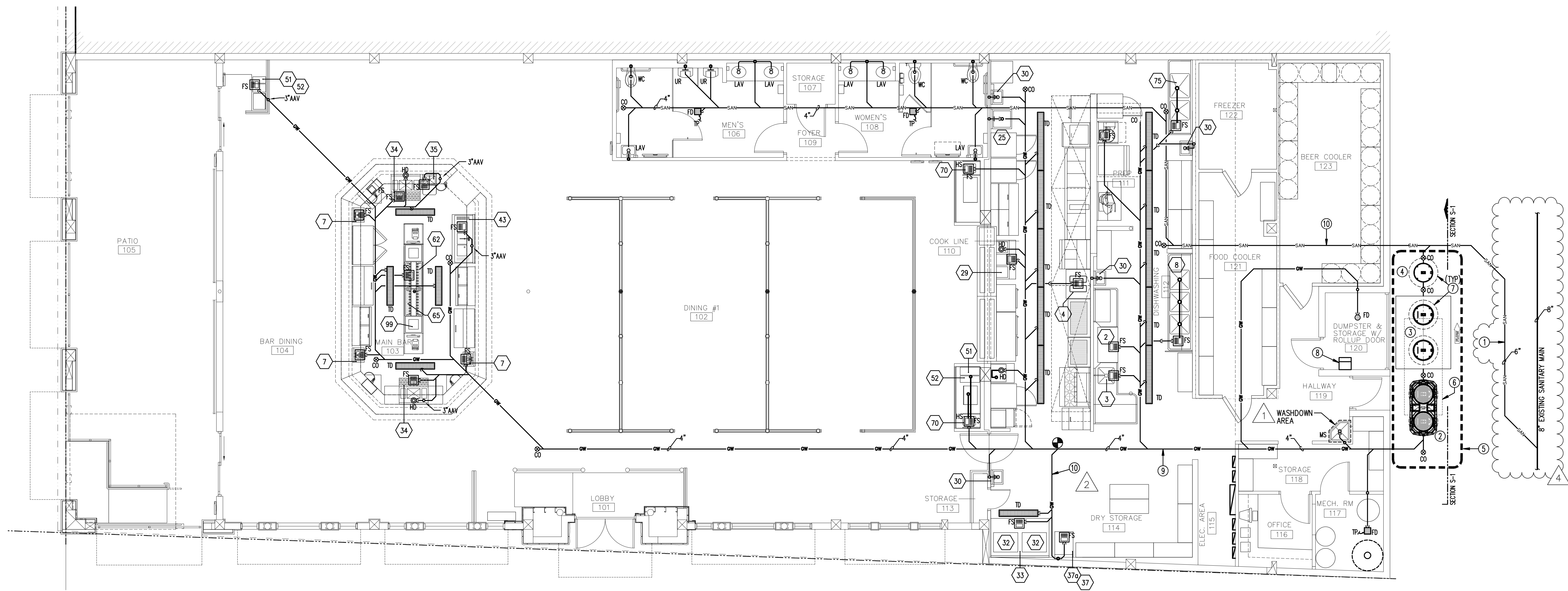
**DELTA G
CONSULTING
ENGINEERS,
INC.**

THE ENGINEERING
SPECIALISTS

Delta G Consulting
Engineers, Inc.
707 N.E. 3rd Ave.
Suite 200
Fort Lauderdale, FL 33304
(954) 527-1112 Tel.
(954) 524-7505 Fax
www.DeltaG.net

REVISIONS:

1	RTC'S (DERM)	08/26/2019
2	RTC'S (DERM)	08/30/2019
3	PUBLIC WORKS COMM.	10/01/2019
4	PUBLIC WORKS COMM.	10/08/2019
-		
-		
-		
-		
-		
-		
-		



EXISTING SANITARY/ GW FLOOR PLAN WITH NEW FOG CONTROL SYSTEMS

SCALE: 3/16" = 1'-0"

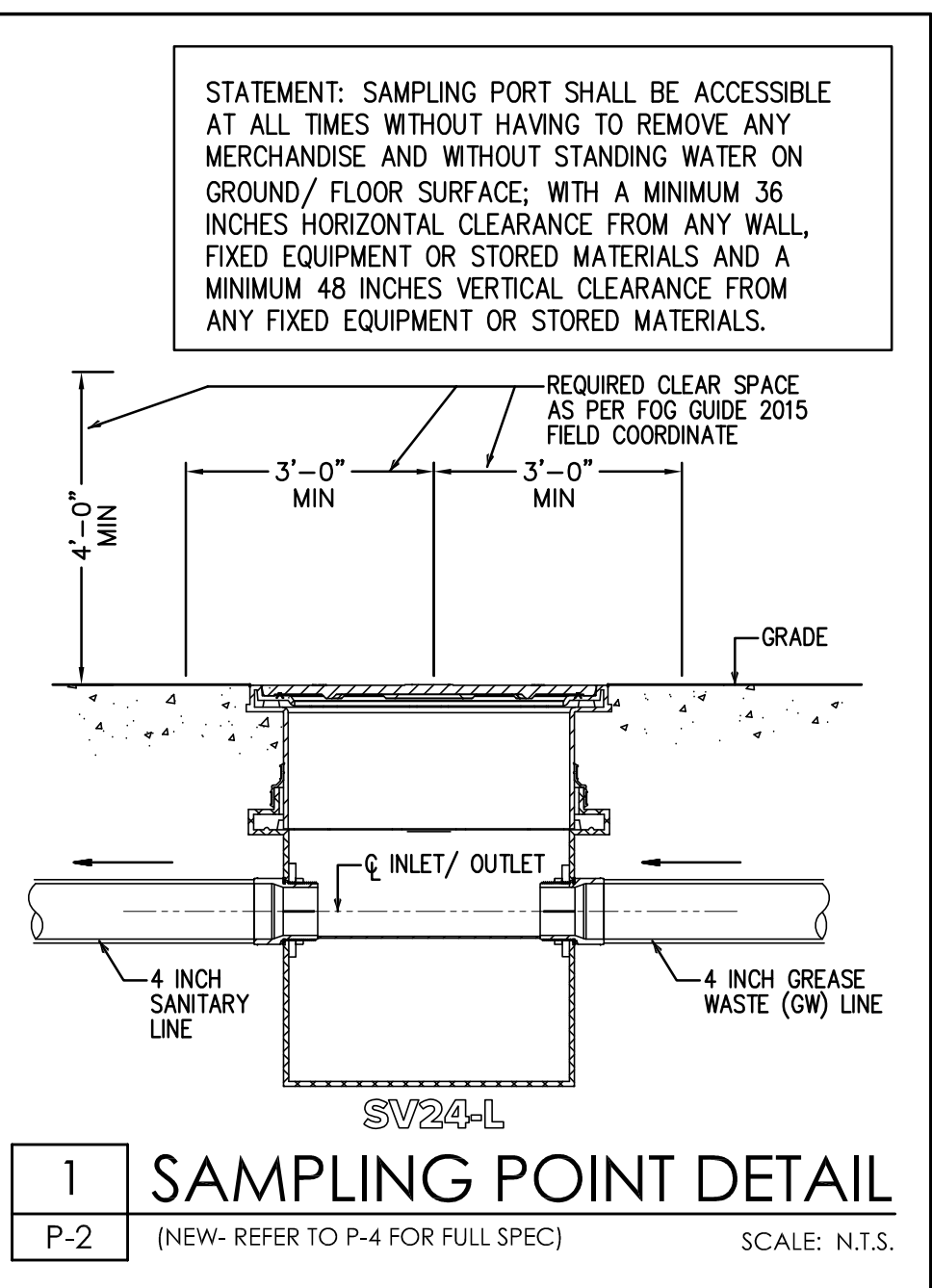
ALL ITEMS SHOWN ON PLAN ARE EXISTING
UNLESS OTHERWISE NOTED

EXISTING EQUIPMENT SCHEDULE

ITEM NUMBER	DESCRIPTION	GAS (MBTU)	PLUMBING			REMARKS
			WATER	COLD WATER	WASTE	
2	LOW TEMPERATURE DISHWASHER		3/4"	2"		1/2" HOT WATER SHUT-OFF
3	S/S DISH TABLE-SOILED		1/2"	1/2"	1/2"	W/ SPRAY RINSE SPRAYER
4	SS 2-COMP. STEAM TABLE	15	1/2"	1"		
7	S/S WORK SINK- WALL HUNG		1/2"	1-1/2"	1-1/2"	ALL HAND SINKS TO HAVE SEE SPLASH GUARDS INSTALLED
8	S/S/ 3 COMPARTMENT SINK		1/2"	1-1/2"	1-1/2"	W/ SIDE SPLASH GUARDS
14	FRILATOR W/ FILTER	660	1/2"			WITH FILTRATION SYSTEM
15	GRIDDLE TOP / GAS RANGE	130	5/4"			SHIELD TO SUPPORT NO. 18 BRASSER
16	CHARBROILER W/ SHELF	120	5/4"			PROVIDE 1/2" FOR W/ASHDOWN
18	SALAMANDER BROILER-GAS	30				
23	CONVECTION STEAMER		2-1/4"	1-1/4"		DRAIN LINE MUST BE VENTED
24	STACKING STAND FOR STEAMERS		2-1/4"	1-1/4"		DRAIN LINE MUST BE VENTED
25	S/S DUMP "SLOP" SINK		1/2"	1-1/2"	1-1/2"	
29	S/S STEAM TABLE (CURRENTLY REMOVED)	15	1/2"	1"		
30	S/S HAND SINK W/ FT. PEDAL		1/2"	1-1/2"	1-1/2"	ALL HAND SINKS TO HAVE SEE SPLASH GUARDS INSTALLED
32	ICE MACH. CUBER-HALF DICE		3/4"	3/4"		
32A	REMOTE CONDENSER-AIR C.					W/ 20' STD. REFRIG. LINE PKG.
33	ICE STORAGE BIN- 1400 LBS			1/2"		
34	S/S COCKTAIL STATION			1/2"		
35	S/S BLENDER STATION-BAR		1/2"	1/2"	1-1/2"	W/ SIDE SPLASH GUARDS
37	ICE MACH-FLAKER, AIR COOLED		1/2"	3/4"		
41	2-DOOR, DBL. STACK CONV. OVEN (GAS)	88	3/4"			
43	S/S 3 COMP. UNDER BAR SINK		1/2"	1-1/2"	1-1/2"	W/ BAR MILD. GLASS WASHER
51	ICED TEA MAKER W/ DISPENSER			1/4"		VENDOR SUPPLIED
52	COFFEE MAKER			1/4"		VENDOR SUPPLIED
53	48" WIDE GAS RANGE	180	3/4"			
55	STEAM JACKETED KETTLE			1/2"		
56,58	WALK IN COOLER				5/8"	---
57	WALK IN FREEZER				5/8"	---
59	WALK IN COOLER (BEER)				5/8"	---
62	TEE TOWER / BEER TOWER					
65	TOP MOUNTED DRAINER			1/2"		
70	S/S HAND SINK @ WAITSTATION		1/2"	1-1/2"	1-1/2"	ALL HAND SINKS TO HAVE SEE SPLASH GUARDS INSTALLED
75	S/S 2 COMP. SINK		1/2"	1-1/2"	2-1/2"	
76	CHARBROILER W/ SHELF	87	3/4"			
88	STAINLESS STEEL PREP TROUGH			2"	8-1/2" H., 15"D., x 15'-9" L.	
99	ICE BIN FOR BEER			1/2"		
107	WATER SOFTENER		SMS	SMS	60 HERTZ	
109	WATER FILTER		SMS	TO MSI	60 HERTZ	
110	DRY BAR					

KEY NOTES:

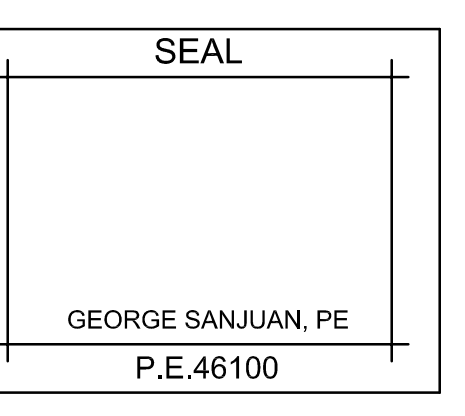
- EXISTING 6" SANITARY LINE FROM STORE TO CITY MAIN. FIELD VERIFY EXACT LOCATION. TENANT WILL BE SOLELY RESPONSIBLE FOR LATERAL FROM PROPERTY LINE TO THE POINT OF CONNECTION WITH CITY'S SANITARY LINE. CONTRACTOR WILL REPLACE EXISTING 6" CITY LATERAL WITH 6" PVC SCHEDULE C900 UP TO THE SEWER MAIN SYSTEM IF NOT ALREADY EXISTING, TO BE FIELD COORDINATED.
- NEW SOLID SEPARATOR, SEE SECTION S-1 AND SPECS ON SHEET P-4.
- NEW GREASE INTERCEPTOR, SEE SECTION S-1 AND SPECS ON SHEET P-4.
- NEW SAMPLING POINT, SEE DETAIL ON THIS SHEET AND SPECS ON P-4.
- NEW FOG CONTROL SYSTEM REPLACING EXISTING GRAVITY GREASE TRAP AT SAME LOCATION. SCOPE OF WORK IS LIMITED ONLY TO THIS AREA, NO OTHER PLUMBING WORK INCLUDED IN CONTRACT.
- DASHED LINE RECTANGLE INDICATES APPROXIMATE LOCATION OF EXISTING GRAVITY TYPE GREASE TRAP, TO BE DEMO AND REPLACED BY NEW SYSTEM.
- 36" CIRCLE CLEARANCE AS REQUIRED FOR ALL FOG CONTROL DEVICES PER FOG 2.0 DERM REGULATION.
- EXISTING YELLOW GREASE STORAGE TANK WITH LID, WITHIN INTERIOR (COVERED) STORAGE/ DUMPSTER ROOM. FOR MORE INFORMATION REFER TO "FOG DISPOSAL NOTES" ON SHEET P-1.
- EXISTING GREASE WASTE LINE BELOW SLAB (TYPICAL).
- EXISTING SANITARY LINE BELOW SLAB (TYPICAL).
- THE EXISTING WASTE LINE TO GW SYSTEM, FIELD COORDINATE.



**CORAL GABLES
MILLER'S
ALE HOUSE**

101 MIRACLE MILE
CORAL GABLES, FL 33134

PROJECT #: 190221
PROJECT MANAGER: S.R.
DESIGNED BY: I.L.
C.A.#: 00009181
DATE: 03/27/19



SHEET NO.
P-2

Copyright 2015
Material shown here is the Copyrighted Property of Delta G Consulting Engineers, Inc. and shall not be reproduced in whole or in part without express written permission.