



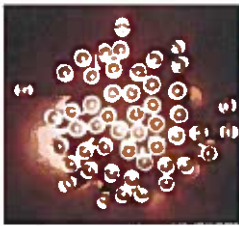
Agenda

Miracle Mile Lighting Design Review

- Lighting Design Overview
- Opportunities for Color Changing Lights
- Concerns
- Recommendation

Coral Gables Miracle Mile & Giralda Avenue Streetscape Design

Lighting: Types



TYPE FN: LED STRING LIGHTS



MM Tree Strings



TYPE FF: ADJUSTABLE LED UPLIGHT



Median Spots



TYPE FN: CATENARY

Overhead



TYPE FD: LIGHT COLUMN

Pylons



UNDERWATER SPOTS

Fountain LED's



TYPE FM: LINEAR UPLIGHT

Arch Lettering



TYPE FN: CATENARY

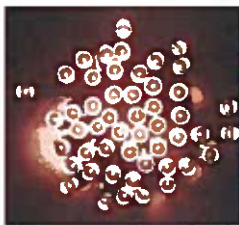
Giralda Rain Dash



COOPERROBERTSON TYPE FN: LED STRING LIGHTS

© 2015 City of San Antonio, Texas. All rights reserved. 04/15/15

Lighting: Types



TYPE FN: LED STRING LIGHTS



MM Tree Strings



TYPE FF: ADJUSTABLE LED UPLIGHT



Median Spots



TYPE FN: CATENARY

Overhead



TYPE FD: LIGHT COLUMN

Pylons



UNDERWATER SPOTS

Fountain LED's



TYPE FM: LINEAR UPLIGHT

Arch Lettering

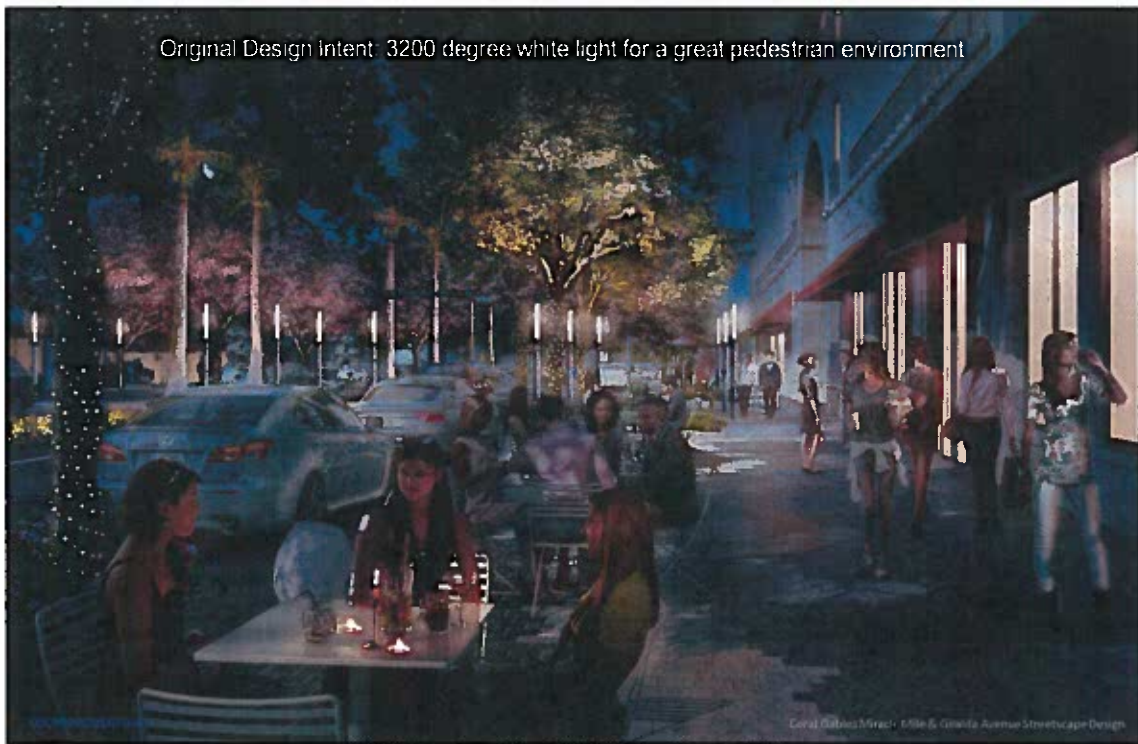
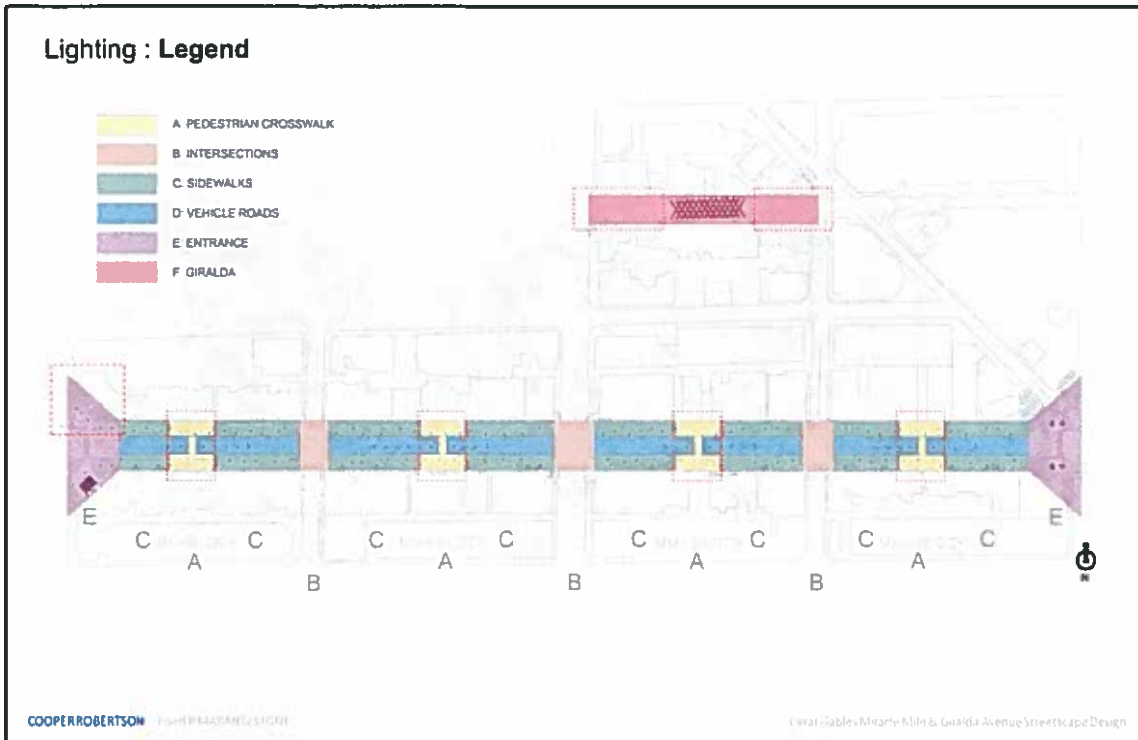


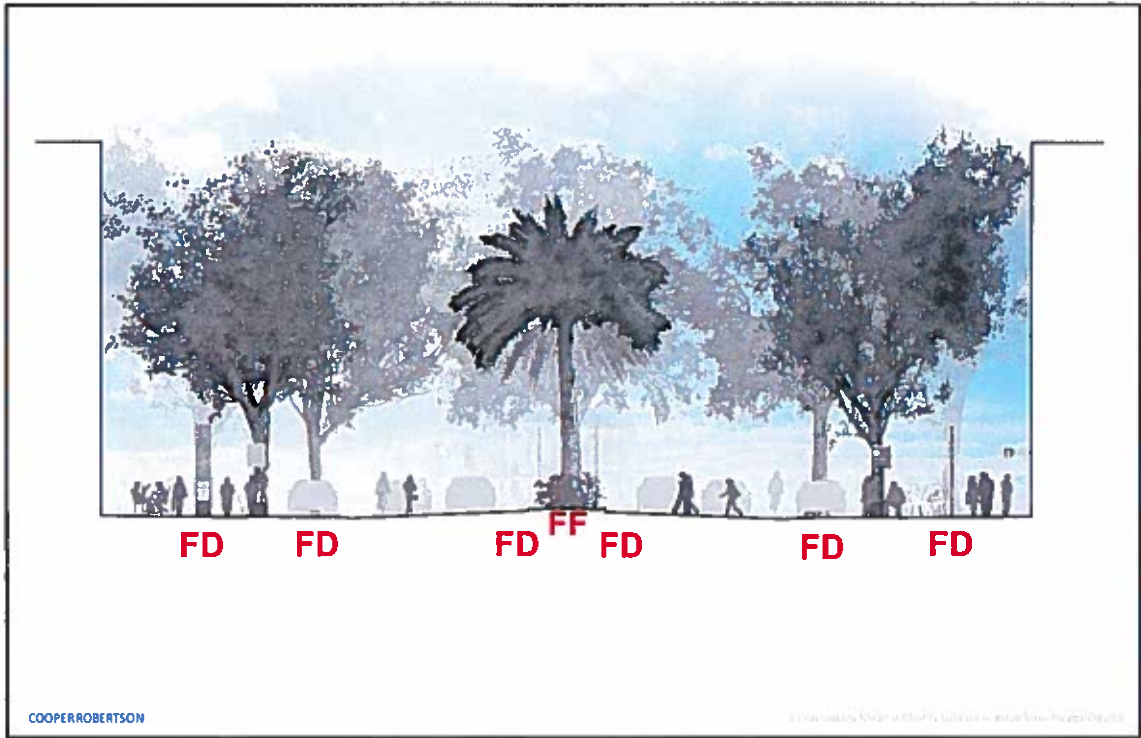
TYPE FN: CATENARY

Giralda Rain Dash

COOPERROBERTSON TYPE FN: LED STRING LIGHTS

© 2015 City of San Antonio, Texas. All rights reserved. 04/15/15







Concern: Bathing people in colored light at mid-block crossing plazas is detrimental to businesses



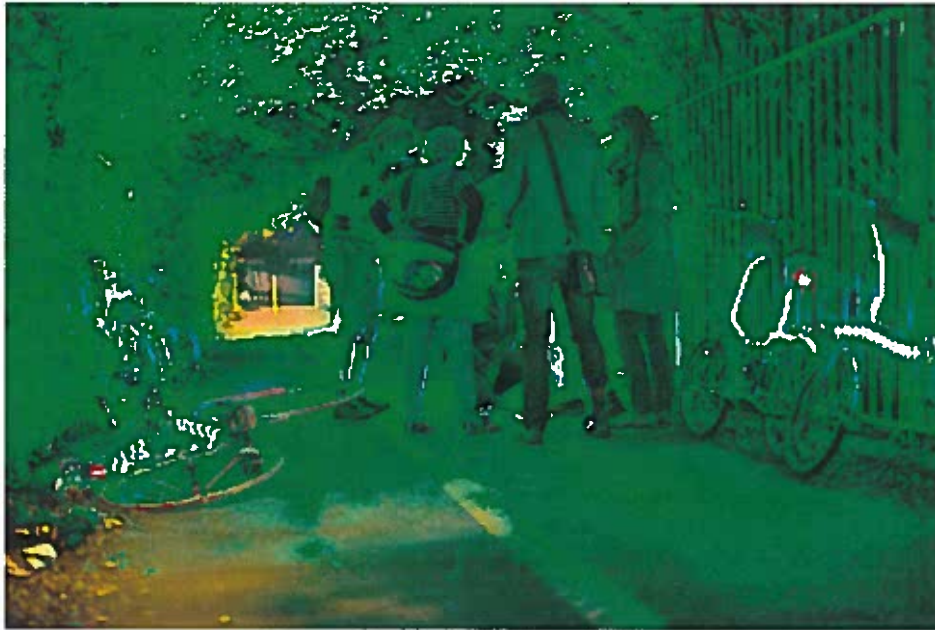
Carroll & Associates, Inc. & Gerald & Associates, Inc. Architecture & Interiors



Concern: Food and Skin tones are severely compromised

COOPERROBERTSON

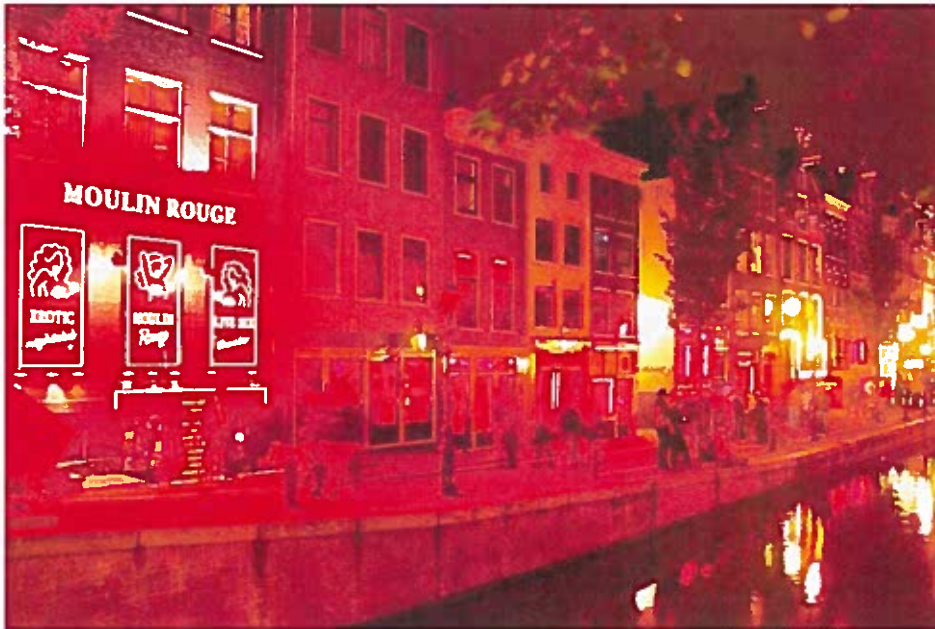
Carroll & Associates, Inc. & Gerald & Associates, Inc. Architecture & Interiors



Concern: Creating a 'fun-house' effect

COOPERROBERTSON

Coral Gables Miracle Mile & Girdola Avenue Streetscape Design




Concern: Negative connotations

COOPERROBERTSON

Coral Gables Miracle Mile & Girdola Avenue Streetscape Design

Potential Holiday Color Events

- New Year
- MLK Day
- Ground Hog's Day
- Chinese New Year
- Valentines Day
- Presidents' Day
- St. Patrick's Day
- Easter/Passover
- Mother's Day
- Memorial Day
- Father's Day
- Fourth of July
- Labor Day
- Columbus Day
- Breast Cancer Awareness Month
- Halloween
- Thanksgiving
- December Holidays

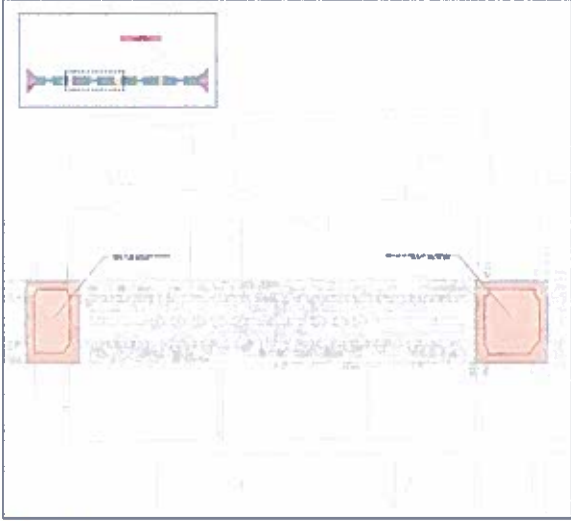



Concern: How much of the year would be compromised, how would the City manage colored light?

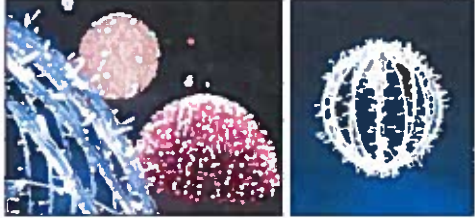
COOPERROBERTSON

© 2016 Cooper Robertson & Associates, Inc. All Rights Reserved. 07/21/16

Lighting : Intersection Holiday Lights (NIC)

INTERSECTIONS
Coral Gables, Florida

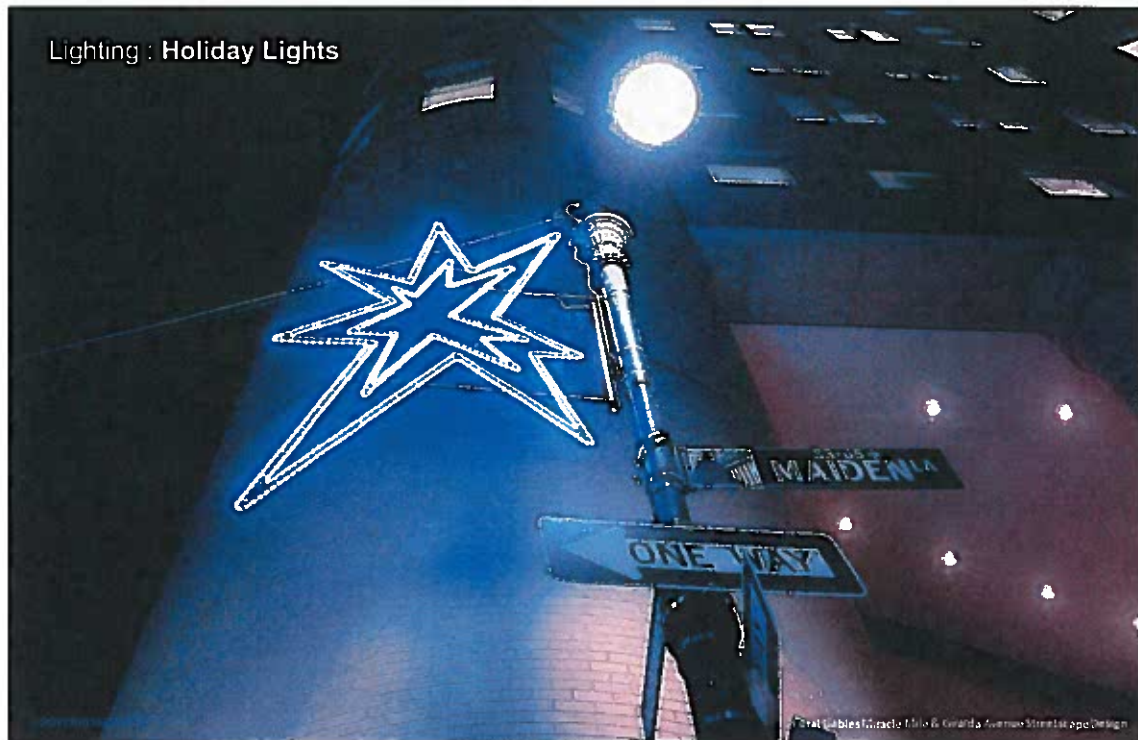


TYPE FG SERIES: CUSTOM SUSPENDED LED GLOBES

INTERSECTIONS

COOPERROBERTSON

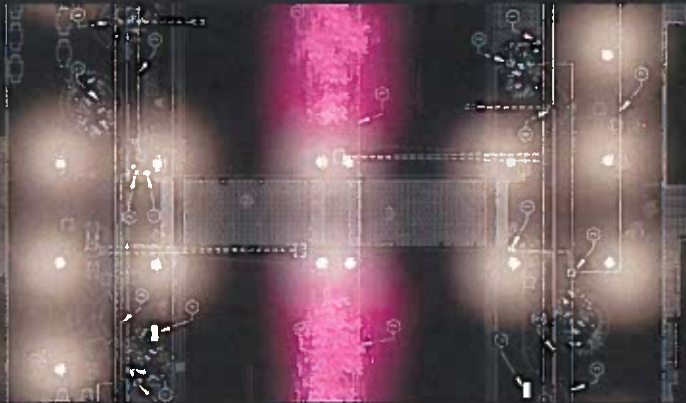
© 2016 Cooper Robertson & Associates, Inc. All Rights Reserved. 07/21/16



Summary of Concerns:

1. The cost of hardware would increase if we went to color changing technology due to the need for more modules and controls.
2. The maintenance costs would increase as staff would require training to manage settings and software.
3. Light levels and quality are likely to suffer when a pure white is emitted (though technology is improving, this aspect would need considerable review to ensure a substitute product was of equal or great quality).
4. Works against the idea that we're creating a cohesive environment. Colors may vary over the length of the mile.
5. For the unforeseeable future, there would be an opportunity to mismanage color events, their hue, their duration. Who would manage the programming and the work to maintain these lights.
6. Full color environments are detrimental to the quality of light deserving of Coral Gables' Miracle Mile and Giralda Plaza.

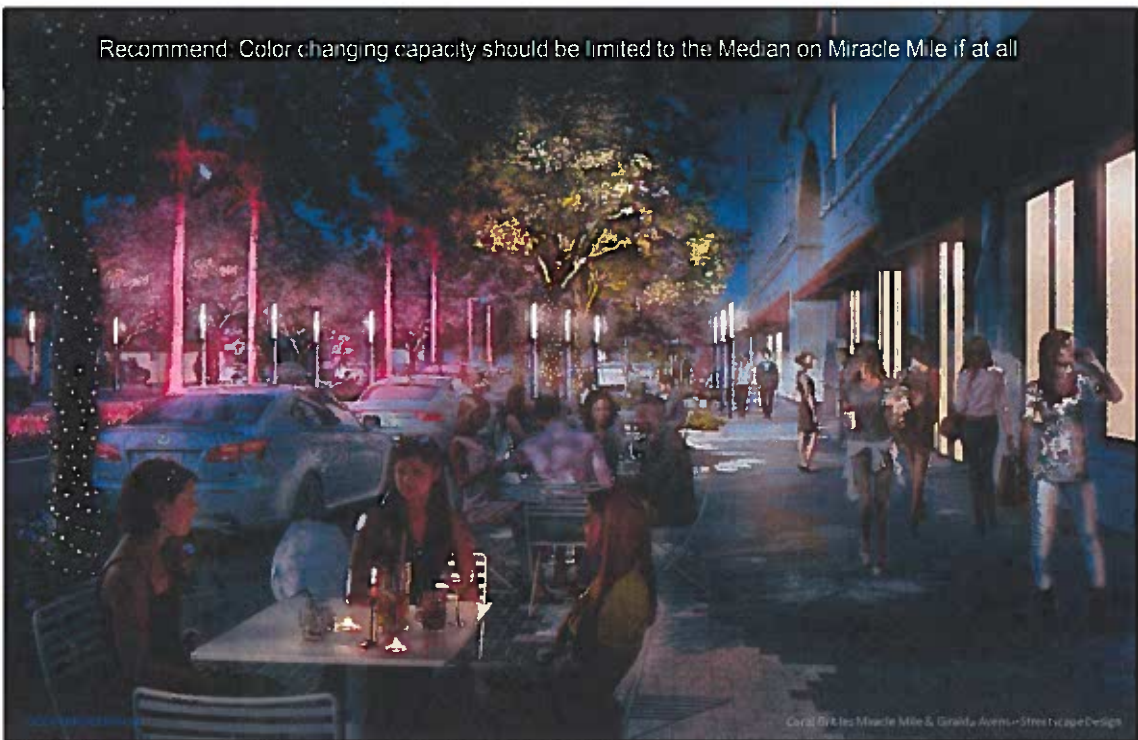
Recommend: Color changing capacity should be limited to the Median on Miracle Mile if at all



©2015 BKL Inc. All Rights Reserved

Coral Gables Miracle Mile & Grand Avenue Streetcape Design

Recommend: Color changing capacity should be limited to the Median on Miracle Mile if at all



©2015 BKL Inc. All Rights Reserved

Coral Gables Miracle Mile & Grand Avenue Streetcape Design