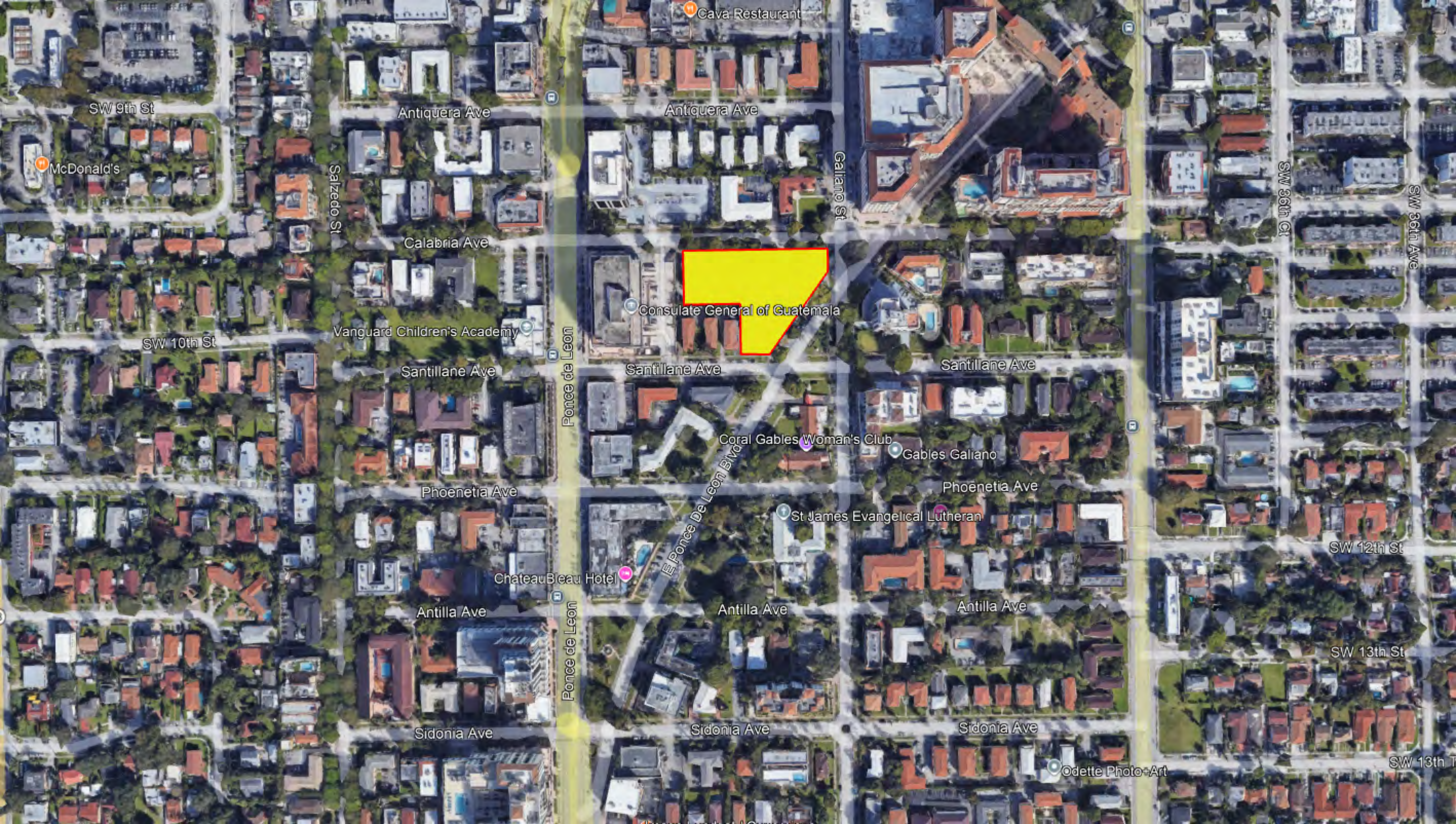


EXHIBIT A

Presentation for
a Public Sculpture for
The Aurelian Coral Gables

Michele Oka Doner



Cava Restaurant

SW 9th St

McDonald's

Antiquera Ave

Antiquera Ave

Galiano St

Salzedo St

Calabria Ave

SW 36th Ct

SW 36th Ave

SW 10th St

Vanguard Children's Academy

Consulate General of Guatemala

Santillane Ave

Santillane Ave

Santillane Ave

Coral Gables Woman's Club

Gables Galiano

Phoenetia Ave

Phoenetia Ave

St James Evangelical Lutheran

Chateau Bleu Hotel

E Ponce de Leon Blvd

Antilla Ave

Antilla Ave

Antilla Ave

SW 12th St

SW 13th St

Sidonia Ave

Sidonia Ave

Sidonia Ave

Odette Photo+Art

SW 13th T





THE AURELIAN

'The Aurelian' radiates golden elegance – shining brightly in the heart of Coral Gables. Meaning "golden" or "gilded," our luxury rental development embodies contemporary opulence and timeless beauty. Just as gold has been cherished throughout history, The Aurelian offers a living experience that is both precious and enduring. Each corner of the property exudes brightness and warmth, setting a new standard for sophisticated living in the heart of Coral Gables, 'The City Beautiful.'

Michele Oka Doner

A STATEMENT OF HOW THE PROPOSED ARTWORK ADDRESSES BROADER CITY GOALS

As a native Miamian, a daughter of these beautiful natural surroundings, I am familiar with the Coral Gables community and its history. It was with great pleasure I received an invitation from Empira Group to propose a work of public art to the Coral Gables community as well as the opportunity to contribute to the visual identity for a exciting new residential building. Both this structure and the public art that will grace the site will be fine additions to the urban fabric of the City.

In response to Empira Group's request, I propose a monumental sculpture that is inspired by the lush surrounding landscape characteristic of and defining the City of Coral Gables, a place proud of their trees and recognized nationally as City of Trees. Everywhere one looks there are banyans, Royal Poincianas, and our Florida State Tree, the Sabal Palm. It is this tree that lends its form to a figurative sculpture that is in dialogue with its surroundings. **Auralia** is inspired by the radiant energies of the sabal's fronds, a texture that suggests the feeling of expanding outward from an inner core.


Auralia will be cast in bronze and patinated to a sheen, giving the metal a golden glow. An application of gold wax or a small amount of gilding at the tips of the bronze fronds will add to the sculpture's radiant sensibility, providing a long-lasting finish, easy to maintain.

Auralia, the integration of human form and nature, will be timeless and embody our aspiration to be uplifted and moved forward by creative expression.



www.micheleokadoner.com

Selected
Site-Specific Public Art
Installations
Miami, Doral, Valletta, Ann Arbor

A photograph of a woman in a black dress walking across a wet, reflective floor in a large indoor space. The floor is covered with numerous white, hand-drawn or stenciled illustrations of sea creatures, including starfish, seashells, and crabs. The woman is captured in motion, her body slightly blurred, as she walks from left to right. The background shows a large, open hall with white pillars, scaffolding, and various pieces of equipment, suggesting a construction or renovation site. The overall color palette is dominated by the blue of the wet floor and the white of the drawings.

A Walk on the Beach
Miami International Airport
Miami-Dade Art in Public Places
1995-2010

*A Walk on
The Beach*
Rotunda
1995



*A Walk on
The Beach*
Rotunda
1995



*A Walk on
The Beach*
Rotunda
1995

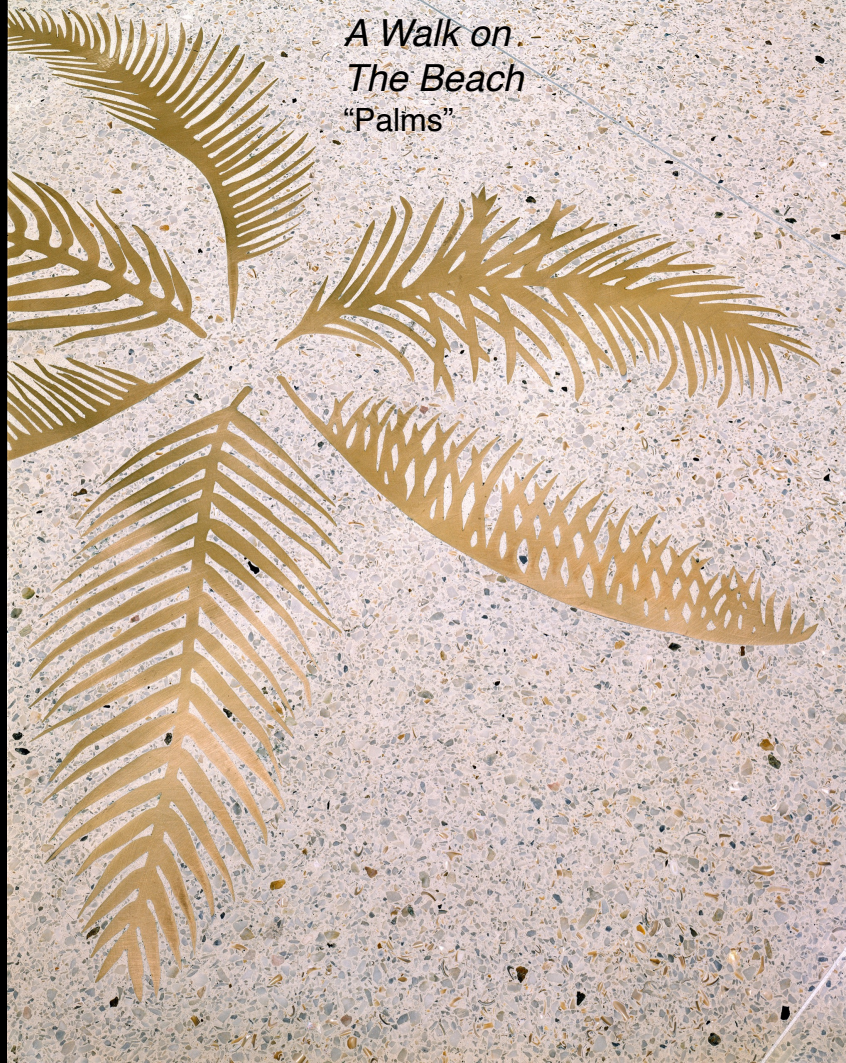


“Weather Patterns”

*A Walk on
The Beach*
"Palms"



*A Walk on
The Beach*
"Palms"



*A Walk on
The Beach*
"Galaxy"
2000
Terrazzo with
mother-of pearl



*A Walk on
The Beach
"Galaxy"*



Micco

2012

Steel & Cast Cement

25 x 50 x 35 ft.

City of Doral, Florida



Micco



Micco



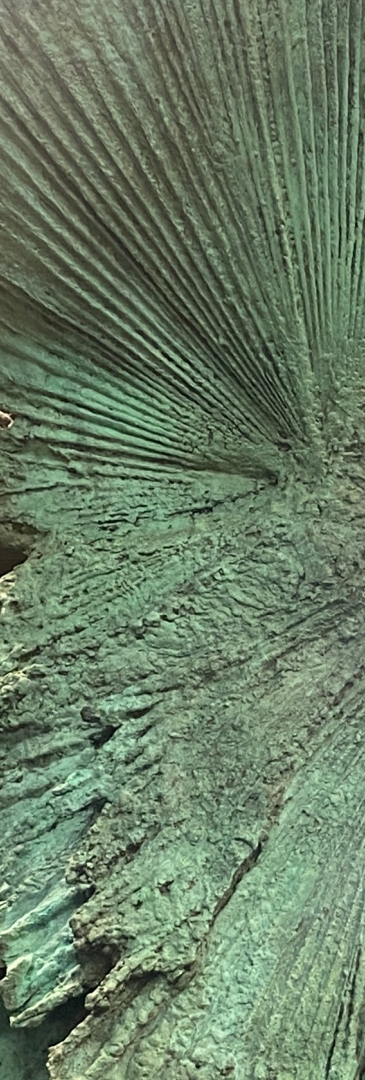
Mieco



Palm Goddess for Malta
2022
Valletta, Malta
Courtesy Heritage Malta



*Palm Goddess
for Malta*



*Palm Goddess
for Malta*



Photo: DOI - Pierre Sammut

*Strider, Salacia,
Angry Neptune*

2008

Cast bronze 6.5 ft. ea.

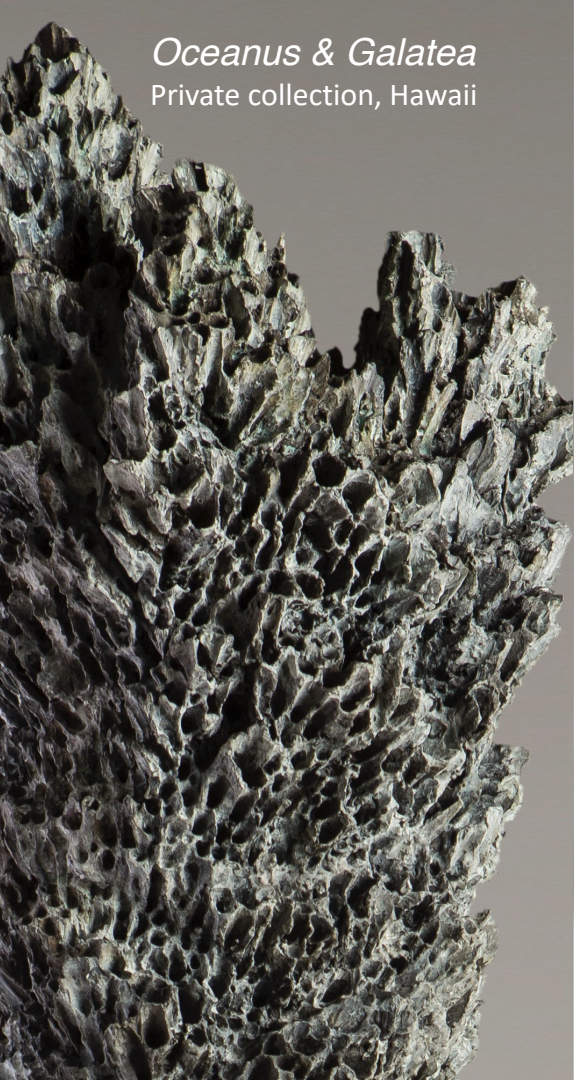
Collection University of
Michigan Museum of Art
Ann Arbor



*Strider, Salacia,
Angry Neptune*
UMMA, Ann Arbor



Oceanus & Galatea
Private collection, Hawaii



Purana
2015
Private Sculpture Park
New Preston, Connecticut





Fragmenta

Figure with Long Arms
Exhibition Atlanta Botanical Gardens

Figure with Long Arms

2012

Private Collection

Boston



Guardian

Private Collection

Midland, Michigan



Guardian II
Private Collection
Central Park South
NYC



Guardian II

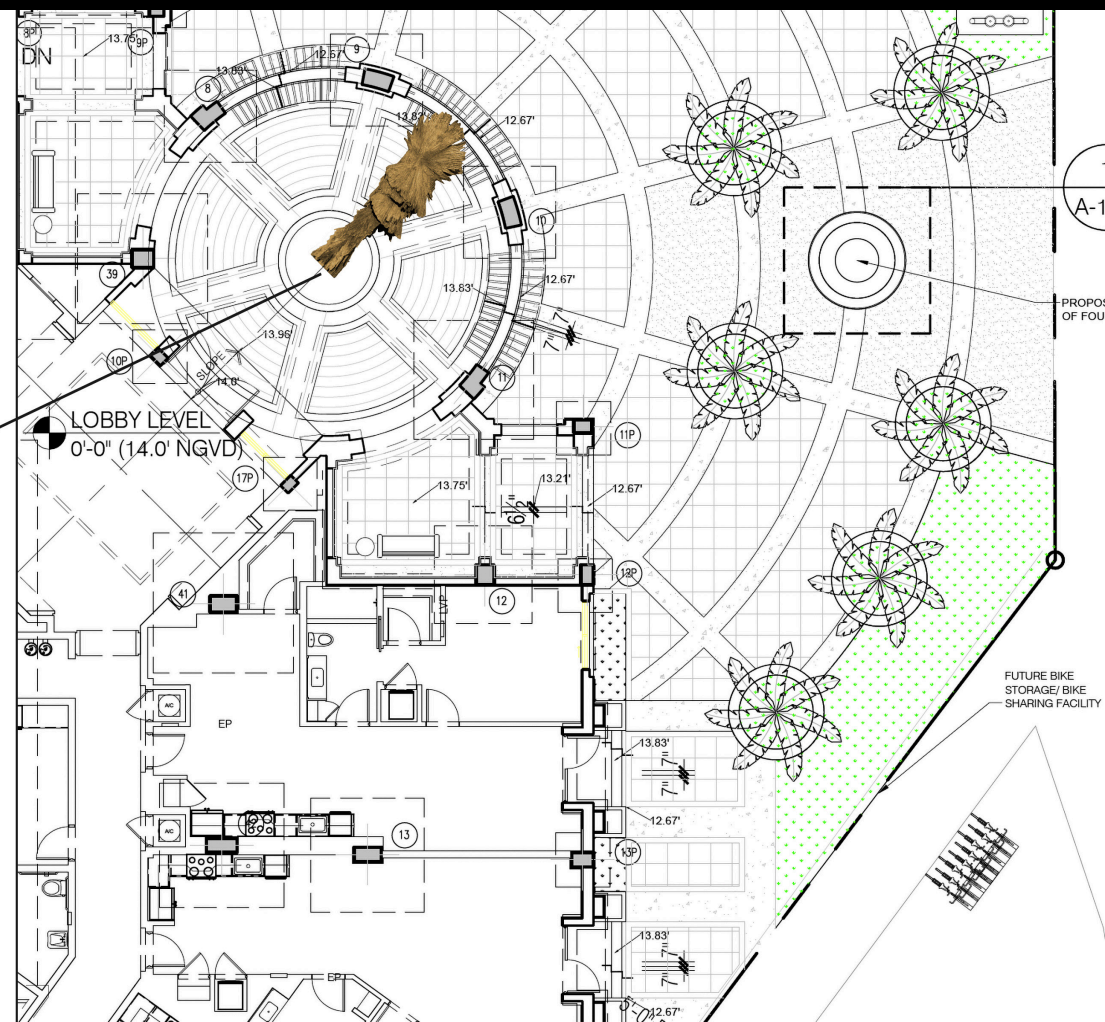




Proposal for The Aurelian
Coral Gables



Siting and
Conceptual
Rendering
for
Public Sculpture
Lobby Rotunda
The Aurelian
Coral Gables



A conceptual architectural rendering of a modern building's lobby rotunda. The scene is set outdoors, featuring a large, light-colored building with a prominent arched entrance. A tall palm tree stands on the left, casting a shadow on the building. In the center, a large, abstract, golden sculpture is displayed on a white pedestal. Several people are walking on the sidewalk, and a man in a suit is talking on a phone. The building has multiple floors with balconies and large windows. The overall atmosphere is bright and modern.

Proposed Public Sculpture site for
The Aurelian, Coral Gables
Lobby Rotunda, Visible from Ponce de Leon
Conceptual Rendering

Michele Oka Doner

Budget **Public Sculpture for The Aurelian** **Coral Gables, Florida**

Size: 10 ft.
Material: Cast Bronze
Location: Lobby Rotunda, The Aurelian

Fabrication of Armature & Creation of Wax for Casting	\$83,700
Bronze Casting	128,400
Assembly	14,800
Patina with gilding	5,100
Artist's Fee	65,000
Insurance	3,000
Total*	\$300,000

*Includes artist's travel to site & foundry. Excludes packing, shipping, installation, base for sculpture, taxes, permits, architectural/engineering drawings

Michele Oka Doner

