



The Avenue

351 San Lorenzo Avenue

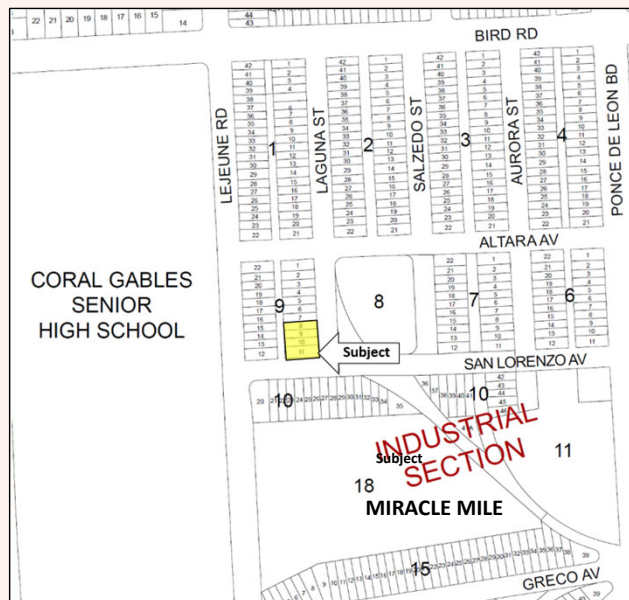
CONDITIONAL USE FOR REMOTE PARKING AND
TRANSFER OF DEVELOPMENT RIGHTS(TDRs)
RECEIVING SITE

CITY COMMISSION
JULY 11, 2023



1

LOCATION



2

351 SAN LORENZO AVE



3

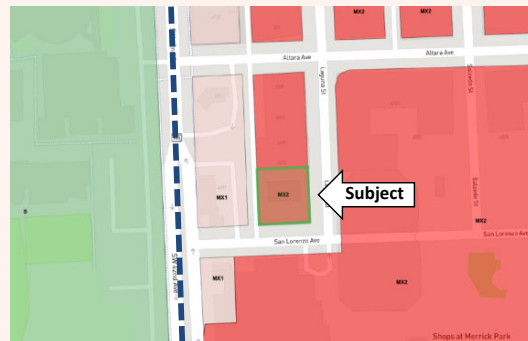
3

LAND USE AND ZONING MAPS

Future Land Use: Industrial



Zoning: MX2 and within the Design & Innovation District



4

EXISTING CONDITIONS

2

2



5

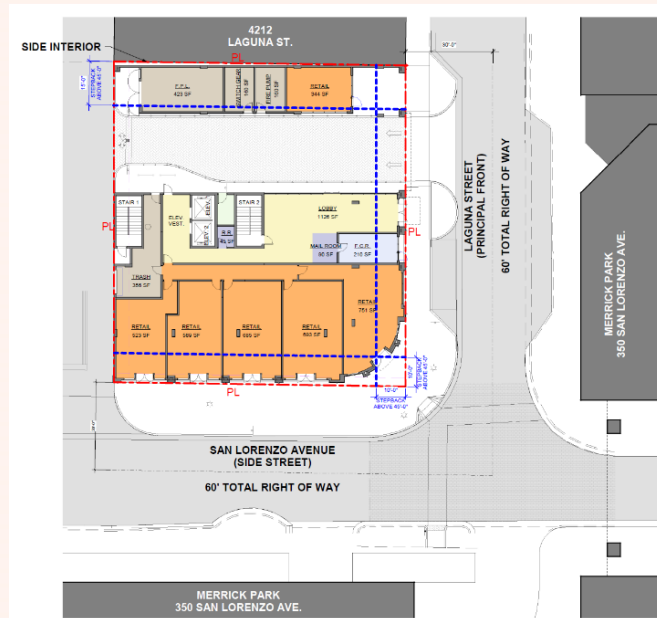
5

REQUEST 1: CONDITIONAL USE – REMOTE PARKING

6

6

“THE AVENUE”



7

7

“THE AVENUE”

Standard	Required/Permitted	Proposed
Building Site	10,000 sq. ft.	10,988 sq. ft. (0.25 acres)
Landscaped Open Space (ground-level outdoor area, open to the sky)	1,099 sq. ft. (10% of building site)	1,440 sq. ft. (13%)
Density	Unlimited within the Design & Innovation	6 units (one unit per level)
FAR (site area x 3.5) Mediterranean Design Mandatory	3.5 = 38,458 sq. ft.	
TDRs (25%)	9,625 sq. ft.	
Total FAR	4.375 (3.5 + TDRs)	4.375 = 48,073.64 sq. ft.
Setback up to 45 feet	0 on all sides up to 45 ft.	0 on all sides up to Level 2
Stepback above 45 feet		
Principal front (east, Laguna Street)	10	7'-4"
Side interior (north)	15	6'-7"
Side Street (south, San Lorenzo Ave)	10	7'-4"
Rear (alley)	0	0
Building Height	8 stories /97' 10 stories/120' w/ Commission Approval	7 stories/83'
Parking		
Hotel (1.125 x 48)	54 spaces	
Retail (3,861 / 300)	13 spaces	
	67 parking spaces total	70 remote parking spaces

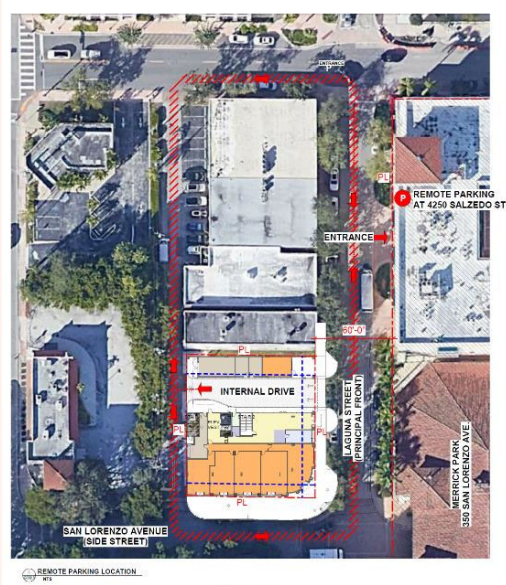
8

8

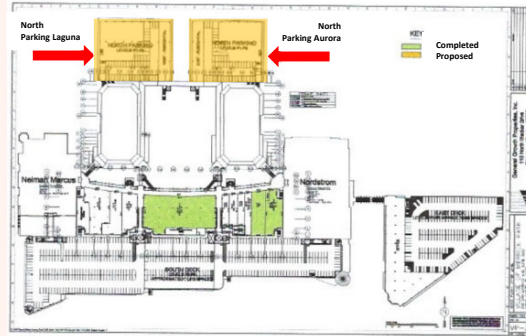
REMOTE PARKING

2

2



70 remote parking spaces



9

9

REQUEST 2: TRANSFER OF DEVELOPMENT RIGHTS (TDRS) RECEIVING SITE

10

10

TRANSFER OF DEVELOPMENT RIGHTS

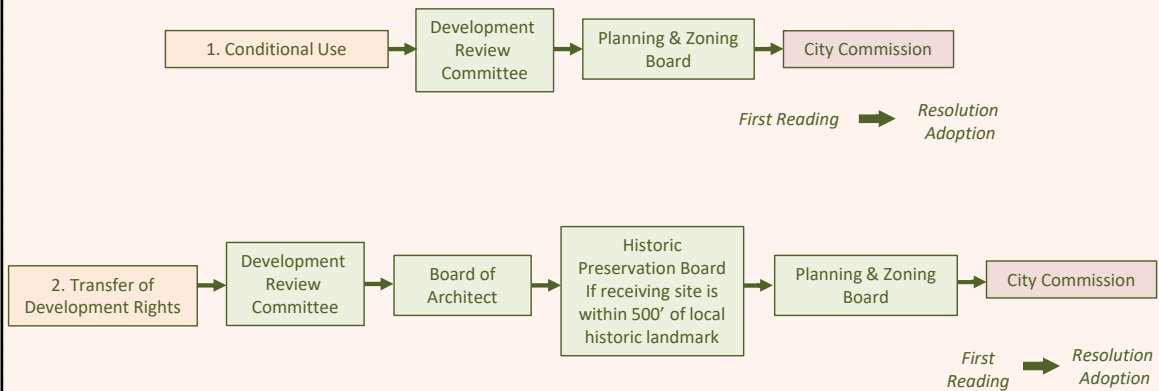
Sending Site – 36 Phoenetia Ave (9,615 square feet of TDRs)



Receiving Site – 351 San Lorenzo Ave



REVIEW PROCESS



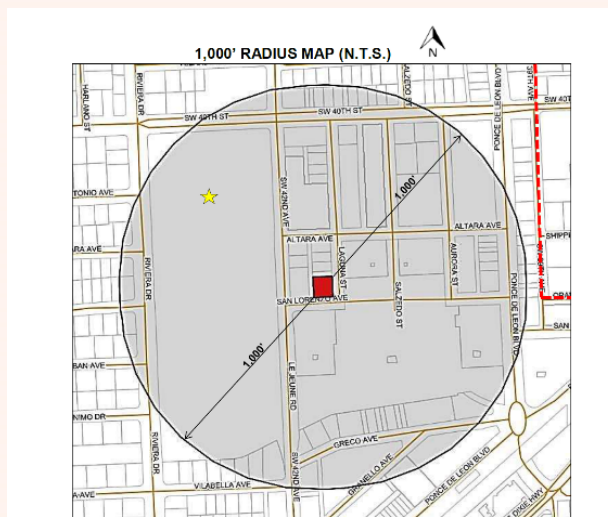
REVIEW TIMELINE

1	DEVELOPMENT REVIEW COMMITTEE: 11.18.22
2	BOARD OF ARCHITECTS: 02.09.23
3	BOARD OF ADJUSTMENT: 04.03.23
4	NEIGHBORHOOD MEETING: 05.23.23
5	PLANNING AND ZONING BOARD: 06.06.23
6	CITY COMMISSION: 07.11.23

13

13

LETTERS TO PROPERTY OWNERS (1,000 FT)



SUBJECT: 351 San Lorenzo Avenue, Coral Gables, FL 33146
FOLIO NUMBER: 03-4120-017-1570

LEGEND:
 CITY OF CORAL GABLES BOUNDARY - - - - - MDCPS ★

14

14

PUBLIC NOTIFICATION	
3 TIMES	LETTERS TO PROPERTY OWNERS NEIGHBORHOOD MEETING, PZB, CC
2 TIMES	PROPERTY POSTING DRC, PZB
3 TIMES	WEBSITE POSTING DRC, PZB, CC
2 TIMES	NEWSPAPER ADVERTISEMENT PZB, CC

15

15

COMPREHENSIVE PLAN CONSISTENCY

STAFF’S DETERMINATION IS THAT THIS APPLICATION IS **CONSISTENT** WITH THE COMPREHENSIVE PLAN GOALS, OBJECTIVES AND POLICIES.

16

STAFF RECOMMENDATIONS

STAFF RECOMMENDATION:

STAFF RECOMMENDS APPROVAL WITH CONDITIONS.

THE APPLICATION COMPLIES WITH THE FINDINGS OF FACT.

THE STANDARDS FOR APPROVAL ARE SATISFIED,
SUBJECT TO CONDITIONS OF APPROVAL.

17

CONDITIONS OF APPROVAL

- Comply with all the **Remote Parking requirements** outlined in the Zoning Code (e.g. Covenant, Annual Renewal, Remedial plan, and other requirements)
- Maintain **pedestrian access** during construction along Laguna and San Lorenzo
- Payment for the loss of **5 on-street parking spaces**
- Improved **pedestrian crossing, signage, and ramping** on both sides of San Lorenzo

18

18



The Avenue

351 San Lorenzo Avenue

CONDITIONAL USE FOR REMOTE PARKING AND
TRANSFER OF DEVELOPMENT RIGHTS (TDRs)
RECEIVING SITE

CITY COMMISSION
JULY 11, 2023

