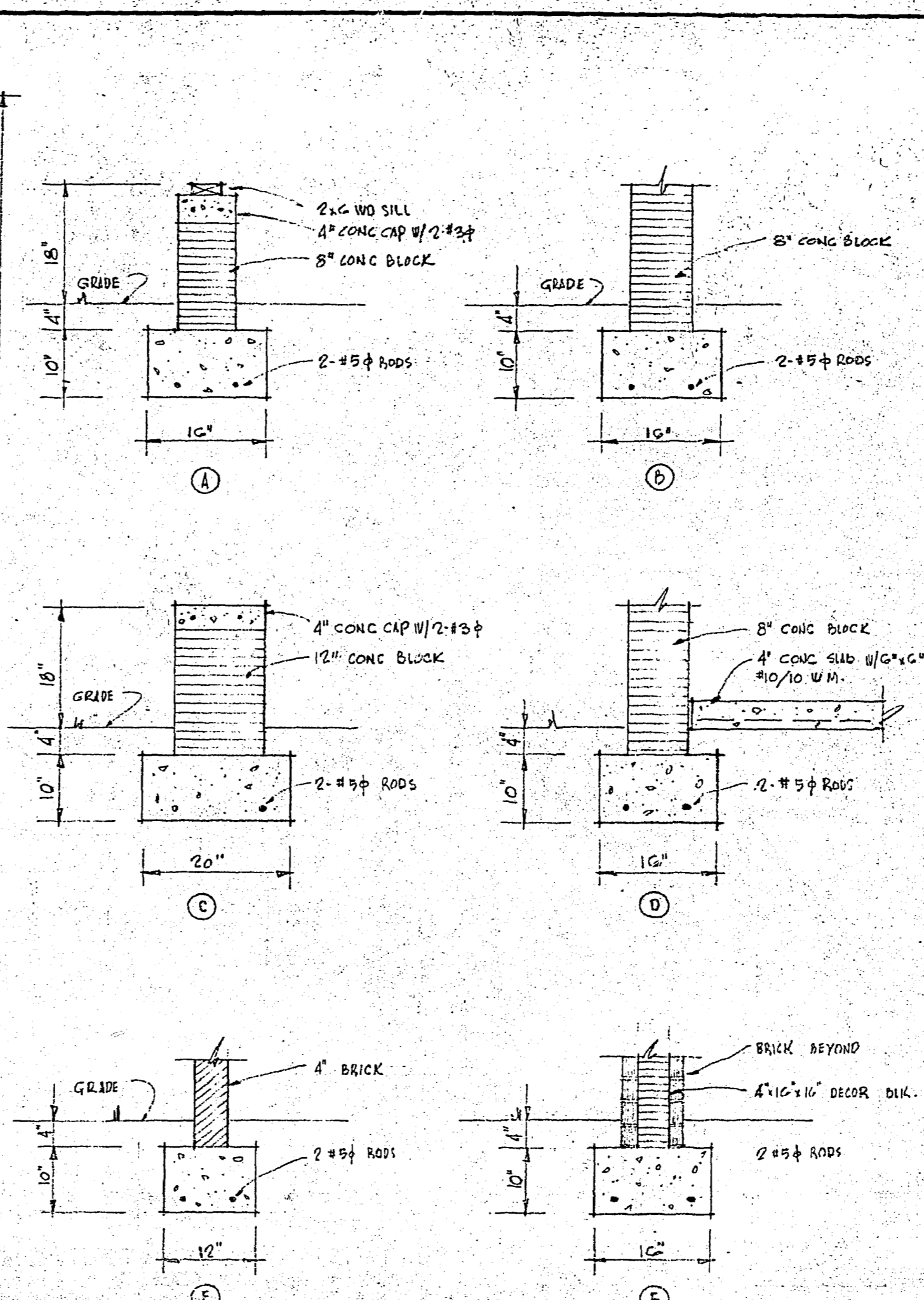
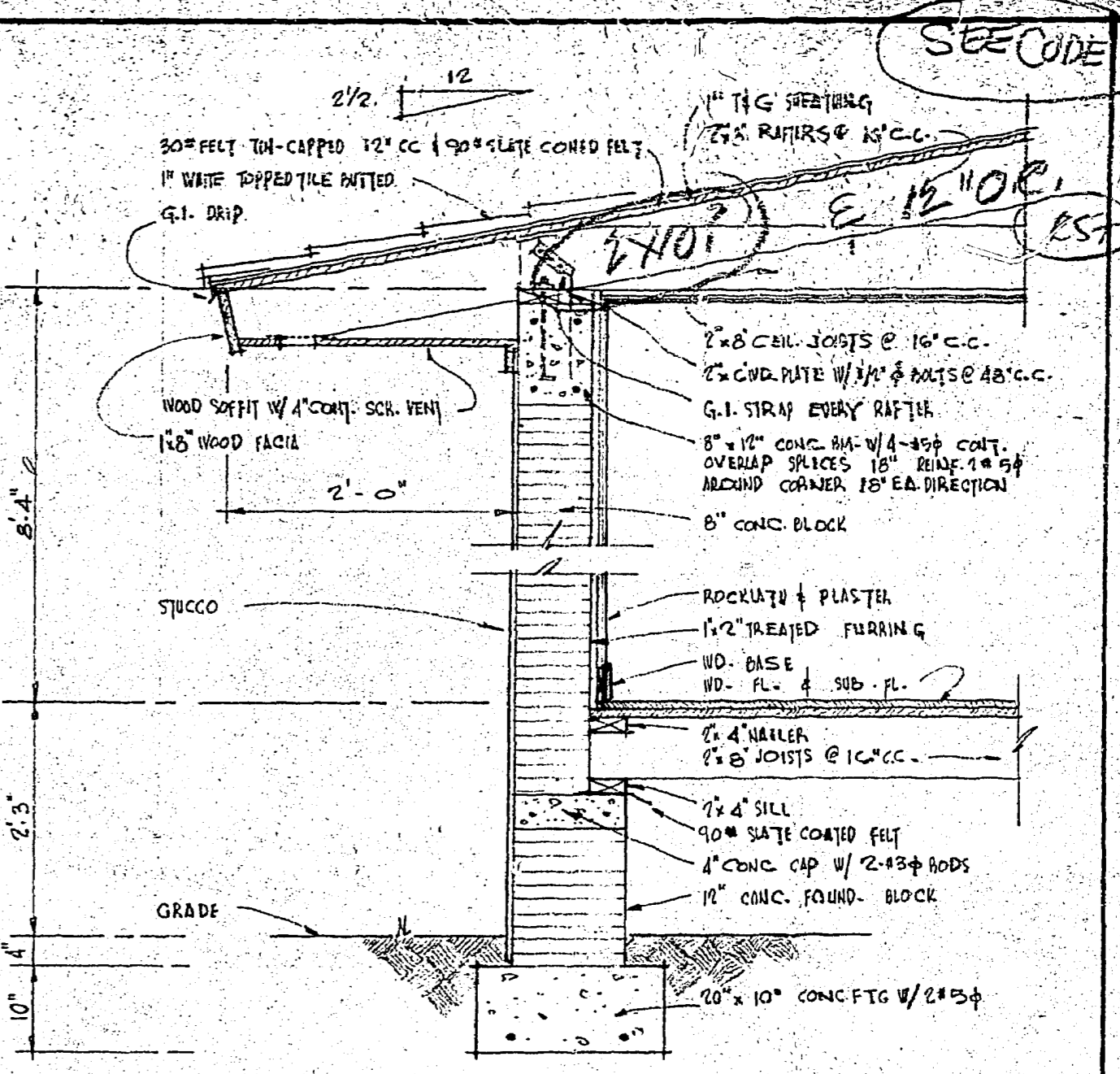


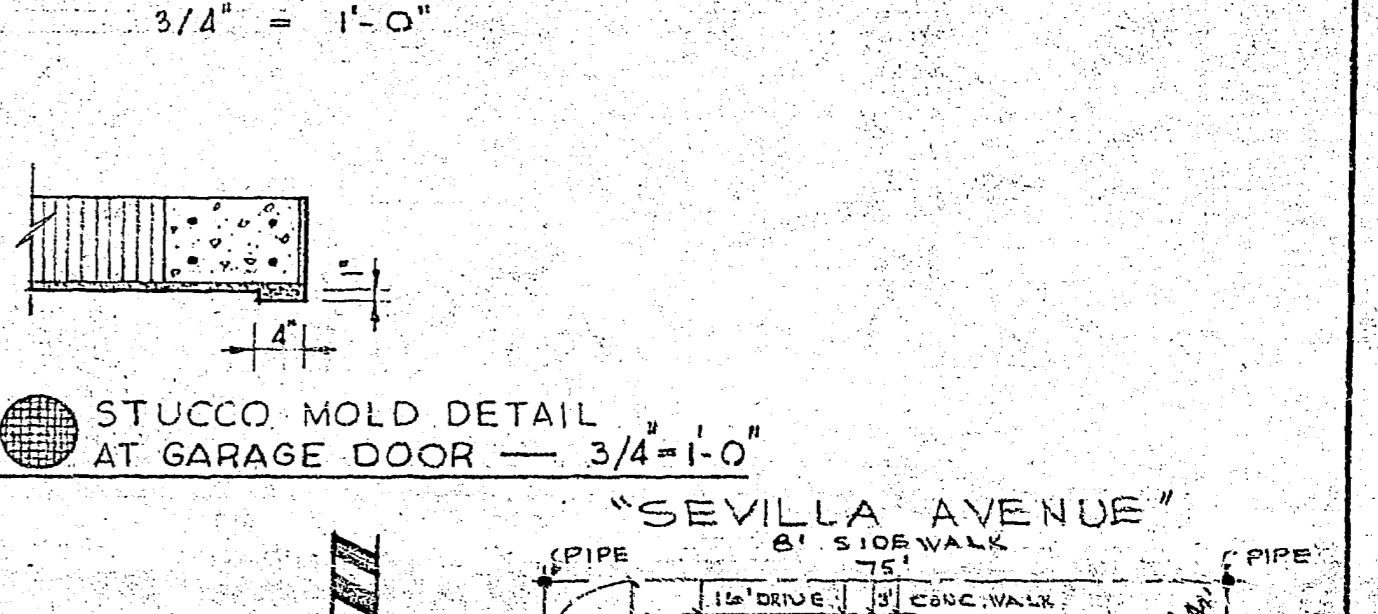
FOUNDATION PLAN — 1/4" = 1'-0"



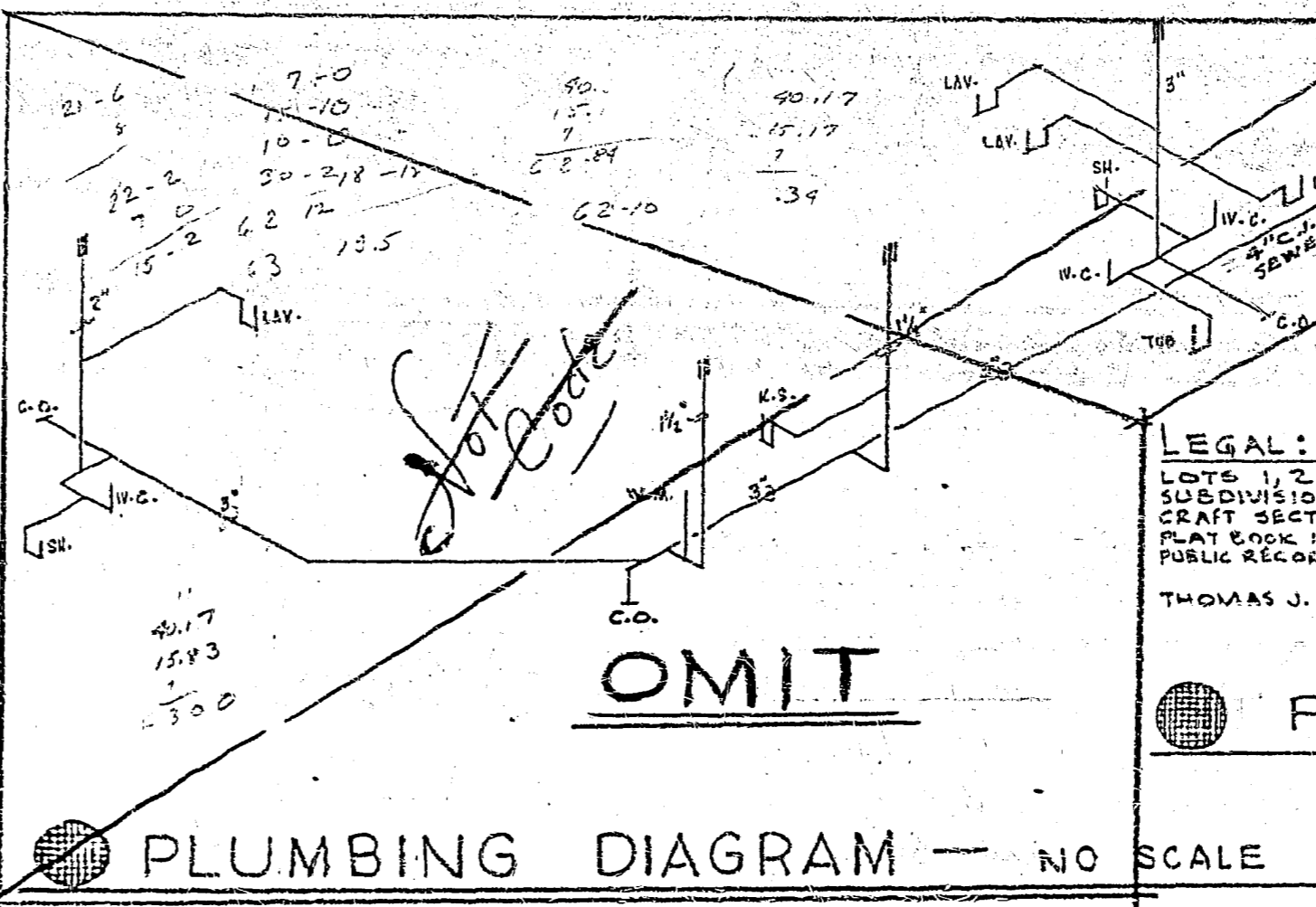
FOOTING DETAILS — 3/4" = 1'-0"



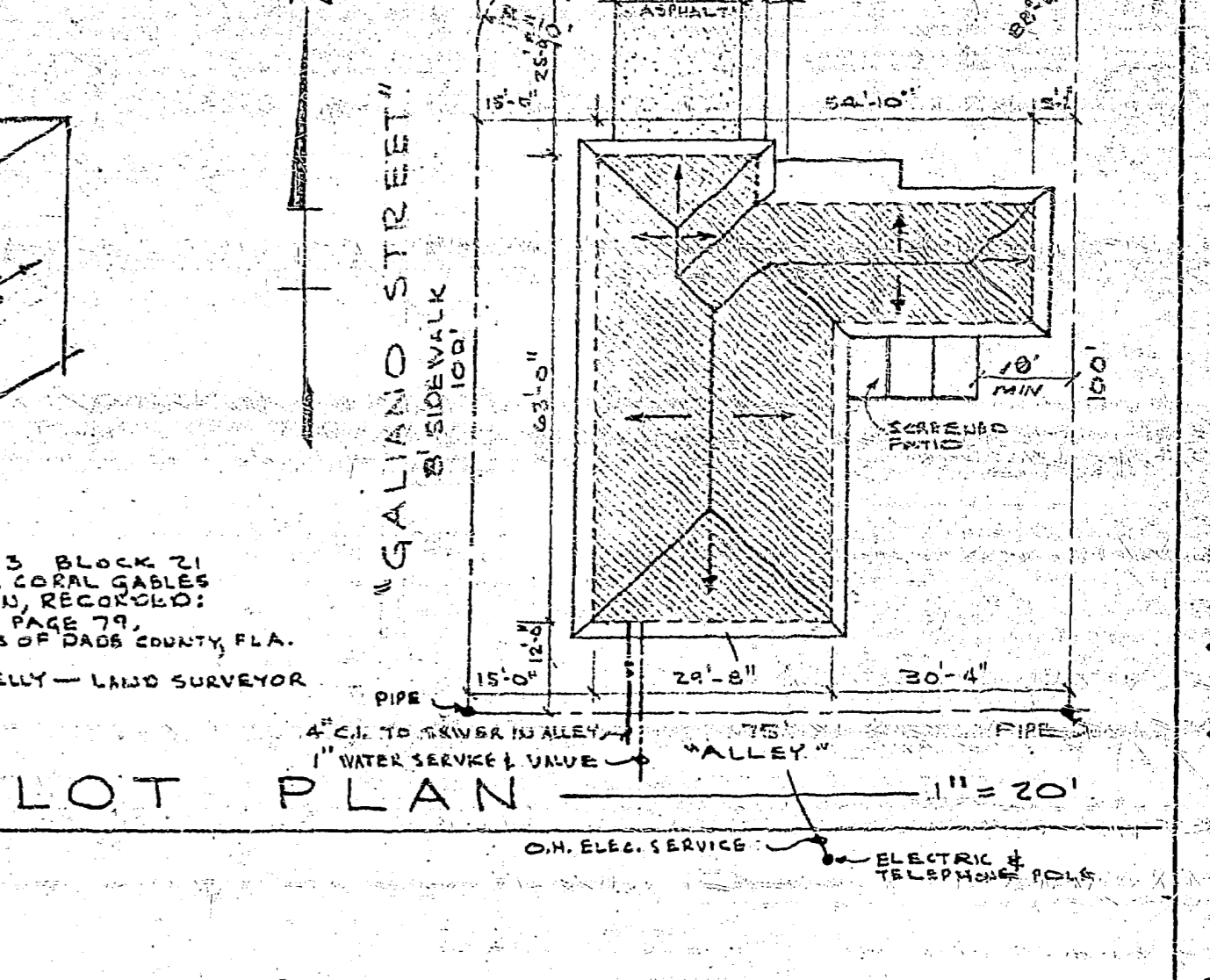
TYPICAL WALL SECTION — 3/4" = 1'-0"



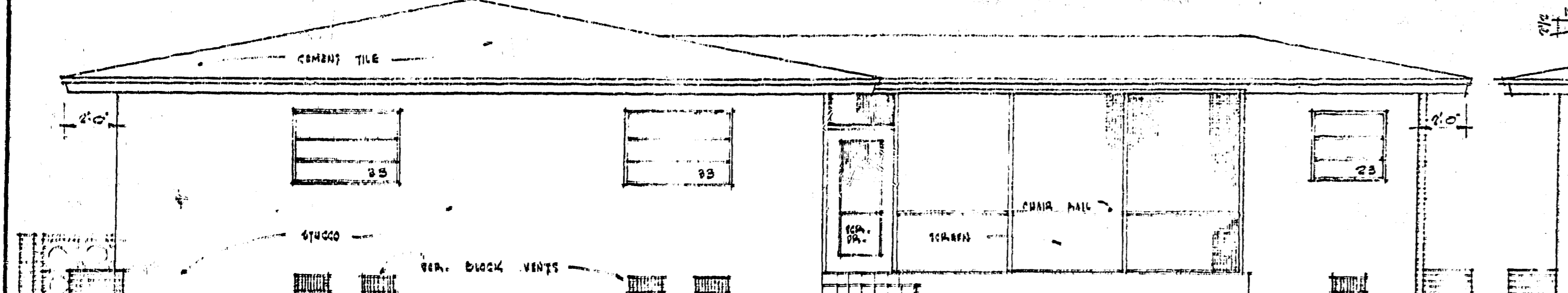
STUCCO MOLD DETAIL AT GARAGE DOOR — 3/4" = 1'-0"



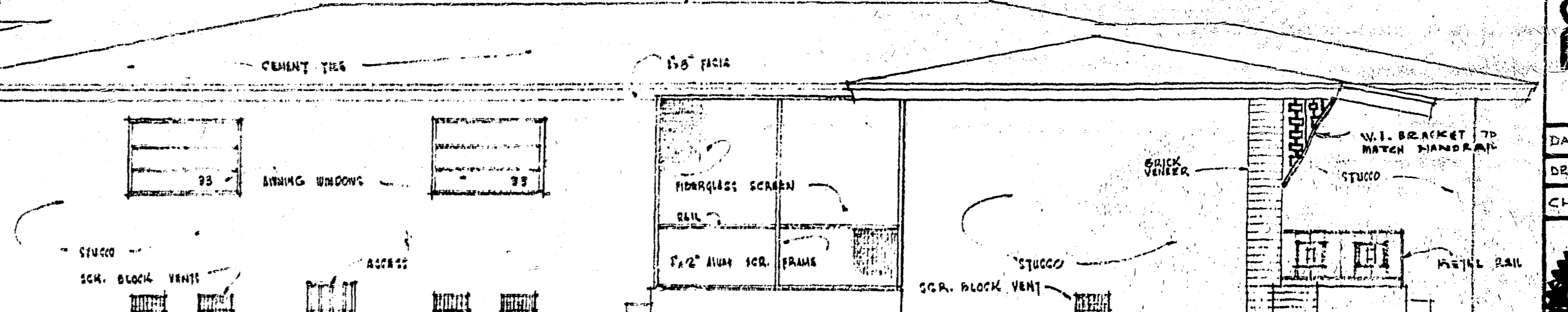
PLUMBING DIAGRAM — NO SCALE



PLOT PLAN — 1" = 20'



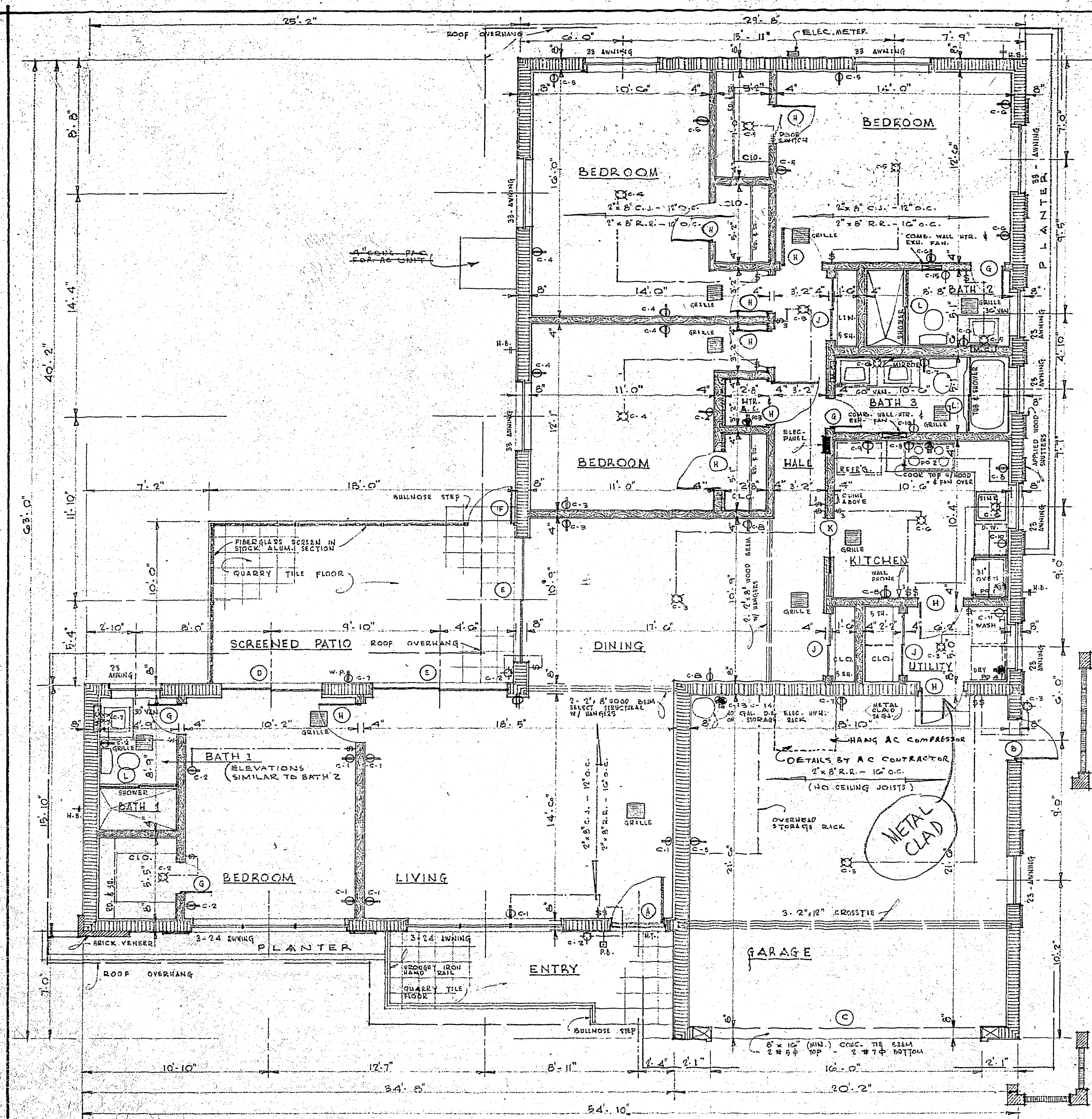
REAR ELEVATION — 1/4" = 1'-0"



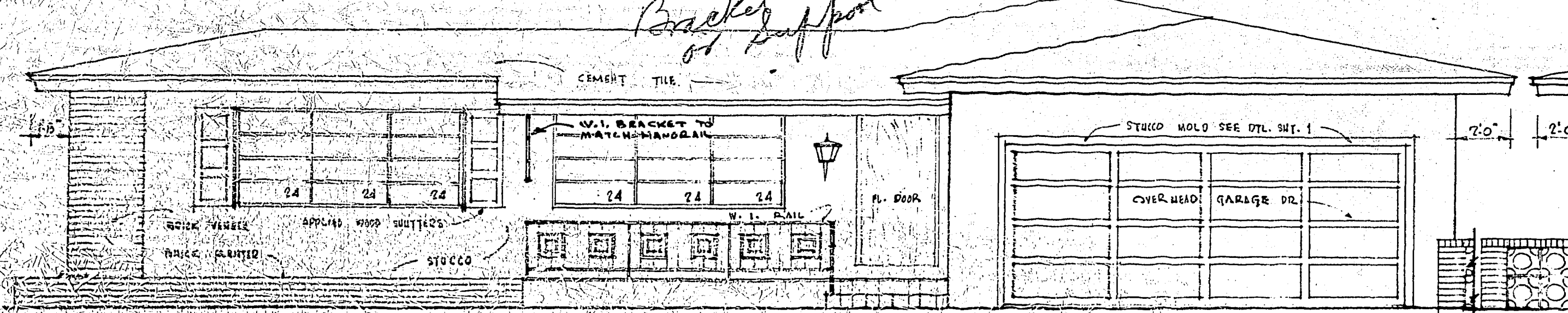
LEFT ELEVATION — 1/4" = 1'-0"

Residence for Mr. Dominick Maniaco
 Miami, Florida
JAMES P. SAMPSON - ARCHITECT
 9410 SW 60 TERRACE, MIAMI, FLORIDA - PHONE 667-5096

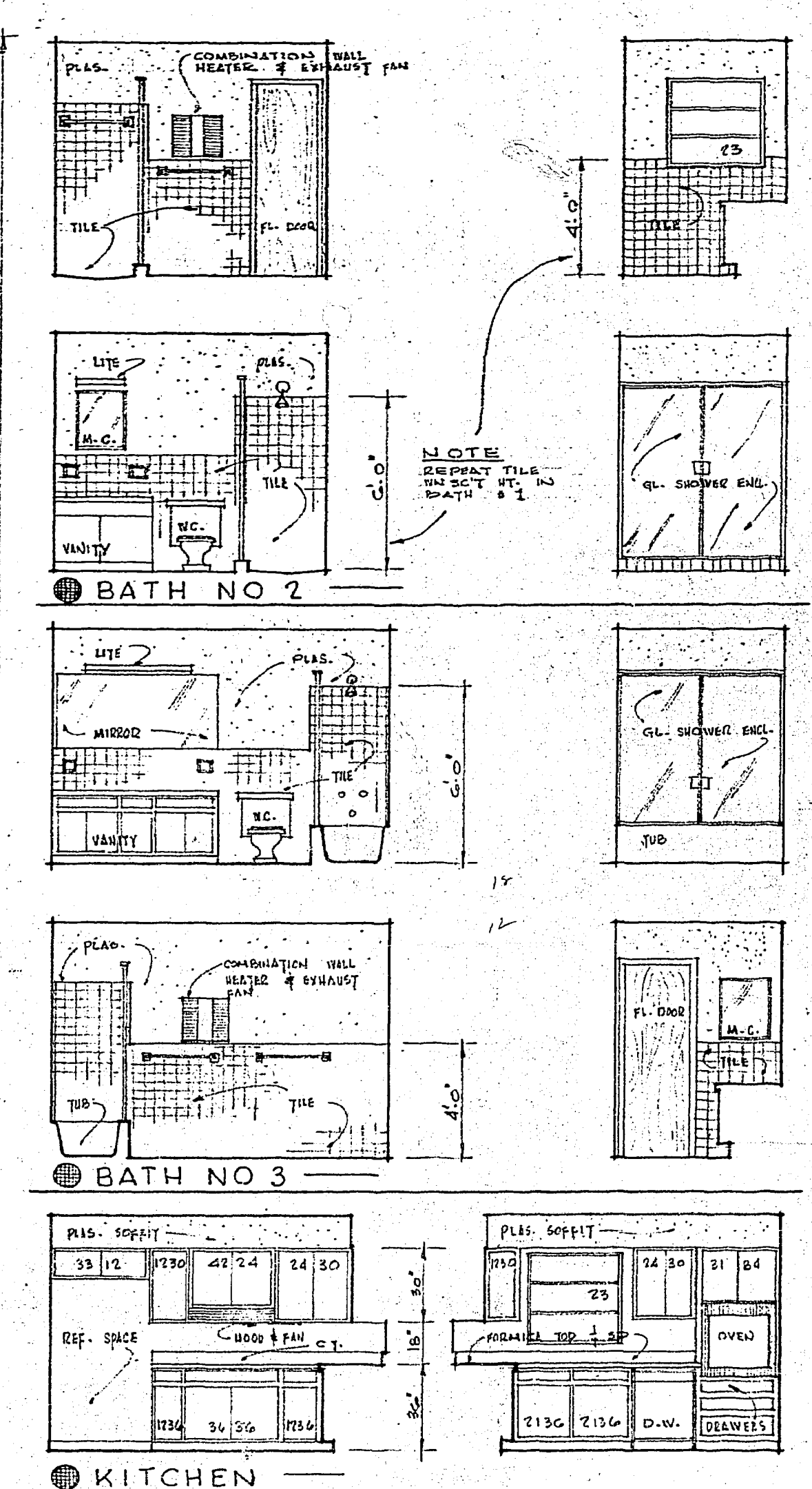
DATE: 12-11-41	COMM
DRAWN BY: RH-JPS	6130
CHECKED BY: JPS	



FLOOR PLAN 1/4" = 1'-0"



FRONT ELEVATION 1/4" = 1'-0"



ROOM ELEVATIONS 1/4" = 1'-0"

KITCHEN EQUIPMENT ...
 RANGE HOOD - 22" W/TONE W/WH. THRU ROOF
 KITCHEN APPLIANCES - WESTINGHOUSE OR EQUAL
 DISHWASHER MODEL SQA 24
 IMPERIAL OVEN-DE LUXE MODEL CO AA 30 W/ ROTISSERIE
 RANGE PLATFORM - MODEL PRA 24
 MISC: (1) 42 GAL. VCR DE. ELEC. RAL HIGH WATER HEATER W/ 10 YEAR WARRANTY; (2) TEMPORARY WATER CLOSET INCLUDED; INSTALL (4) HOSE BIBBS; ALL COPPER WATER PIPE IN BLDG. CONNECT TO OWNER'S SEPTIC TANK AS SHOWN; 5 FT. FROM BLDG. CONNECT TO OWNER'S WATER SERVICE IN REAR, METER & TAP BY OTHERS.

ROOM FINISH SCHEDULE

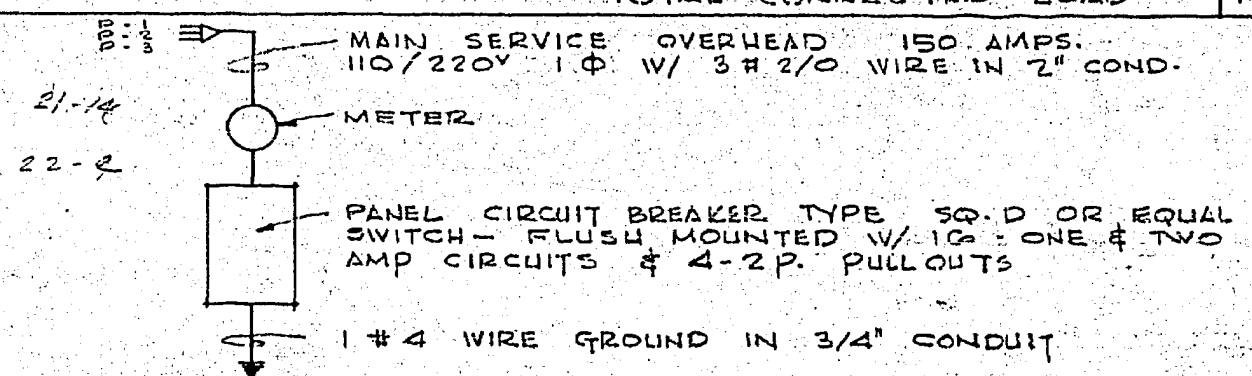
ROOM	FLOOR	BASE	WALL	CEILING	V. STOOL
KITCHEN	VINYL ASP.	VINYL ASP.	PLASTER, SMOOTH	PLASTER	TILE
BATHS	TILE	TILE	PLASTER	"	"
GARAGE	CEM. FIN.	NONE	STUCCO	EXPOSED	NONE
SCR. PATIO	QUARRY TILE	NONE	STUCCO & SCREEN	WOOD SOFFIT & SCREEN	"
ENTRY	QUARRY TILE	NONE	STUCCO	NONE	"
ALL OTHERS	WOOD	WOOD	PLASTER, SMOOTH	PLASTER	TILE

DOOR SCHEDULE

MARK	WIDE	HIGH	THICK	DESCRIPTION
A	3'-0"	6'-8"	1 3/4"	FLUSH WOOD EXTERIOR
B	2'-0"	6'-8"	1 3/4"	3-LITE EXTERIOR
C	10'-0"	7'-0"	"	4 PANEL OVERHEAD WOOD GARAGE
D	6'-0"	6'-9"	"	PAIR SLD'G. GLASS EXTERIOR TRACK
E	6'-0"	6'-9"	"	PAIR SLD'G. GLASS EXTERIOR TRACK
F	2'-8"	6'-8"	"	ALUM. FRAME - FIBER GLASS SCREEN
G	2'-0"	6'-8"	1 3/8"	FLUSH WOOD
H	2'-0"	6'-8"	1 3/8"	"
J	4'-0"	6'-8"	1 3/8"	PAIR FLUSH WOOD BY-PASS SLD'G
K	2'-0"	6'-8"	1 3/8"	FLUSH WOOD SLD'G ROCKET
L	6'-0"	6'-8"	"	PAIR BY-PASS ALUM. FRAME GLASS INSERT ENCLOSURE

ELECTRICAL SCHEDULE

DESC.	QTY	SPACE UNITS	DESCRIPTION	VOLTS	AMPS	FUSE	WIRE
C-1	0	0	GENERAL LITE	110	3	15	2# 14
C-2	3	4	"	110	3	15	2# 14
C-3	3	4	"	110	3	15	2# 14
C-4	5	2	"	110	3	15	2# 14
C-5	4	4	"	110	3	15	2# 14
C-6	4	3	"	110	3	15	2# 14
C-7	3	0	"	110	3	15	2# 14
C-8	4	0	SMALL APPLIANCE & HOOD FAN	110	4.5	20	2# 12
C-9	1	0	REFRIGERATOR	110	3	20	2# 12
C-10	1	0	DISHWASHER	110	4.5	20	2# 12
C-11	1	0	WASHER	110	4.5	20	2# 12
C-12	0	0	SPARE CIRCUIT	110	3	20	2# 12
PO-1			OVEN	220	15	30	3# 10
PO-2			COOK TOP	220	30	40	3# 8
PO-3			CENTRAL AIR CONDITIONER	220	24	30	3# 8
PO-4			DRYER	220	15	40	3# 8
CIB C14			40 GAL. D.E. HOT WATER HEATER	220	15	20	3# 12
C-15			BATH COMBINATION (2 UNIT HEATER & EXHAUST)	110	4.5	20	2# 12
C-16			BATH COMBINATION (2 UNIT HEATER & EXHAUST)	110	4.5	20	2# 12
TOTAL CONNECTED LOAD				148.5	WD DEMAND FACTOR		



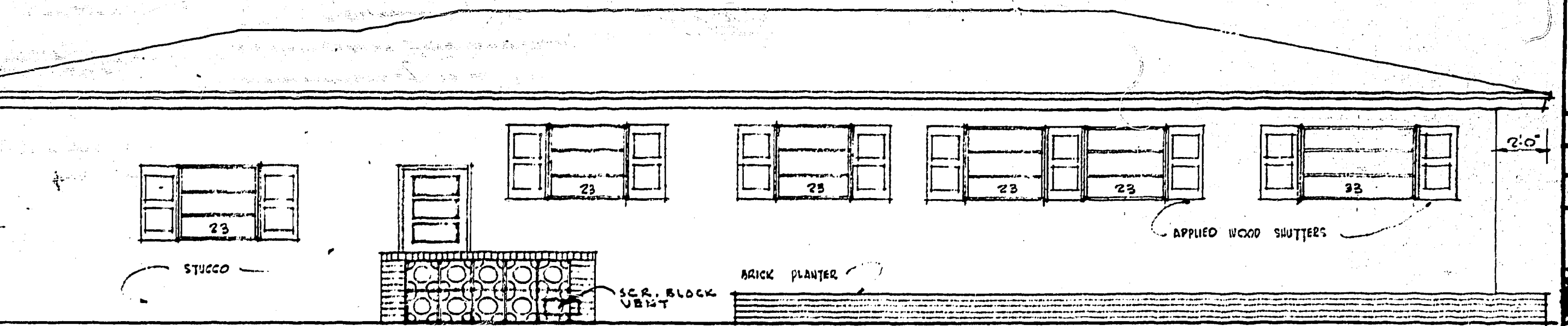
ELECTRICAL DIAGRAM - NO SCALE

HEATING NOTES ...
 PROVIDE CENTRAL HEATING SYSTEM AND CENTRAL AIR CONDITIONING; 4 TON SPLIT UNIT, REMOTE CONTROL (REVERSE CYCLE SYSTEM)
 PROVIDE "IN" TWO BATHS AS SHOWN NUTONE MODEL 9300 W/ DOUBLE HEATING ELEMENT & EXHAUST FAN.

PLUMBING NOTES ...
 BATH #1 & #2 CORALLIN:
 (1) N-1011-40 SHOWER W/ M-1905 DRAIN & LEAD PAN. (1) F-470 1915 LAV. GLATED W/HOODIE RIM, N-2101-B FITTING & STOPS, (1) F-2112 WATER CLOSET W/ CHURCH #300 SEAT, STOPS & SUPPLIES.
 BATH #3 YELLOW:
 (1) P-2255 BILCOB BATH TUB W/ N-1020 INVERTER, N-1700 WASTE.
 (2) LAVATORIES, SAME AS BATHS #1 & #2 (1) WATER CLOSET, SAME AS BATH #1 & #2.
 KITCHEN COLOR:
 (1) P-7011-13 24 X 21 SINK W/ RIM & N-4150 FACET, BASKET STRAINER.
 CONNECT OWNER'S DISHWASHER.
 UTILITY ROOM:
 (1) HOT & (1) COLD WATER FAUCET & WASTE FOR WASHING MACHINE.
 SEWER: SEWER INVERT IN ALLEY AT APPROX 10 FT. DEPTH.

28.62
 22.4
 20.8

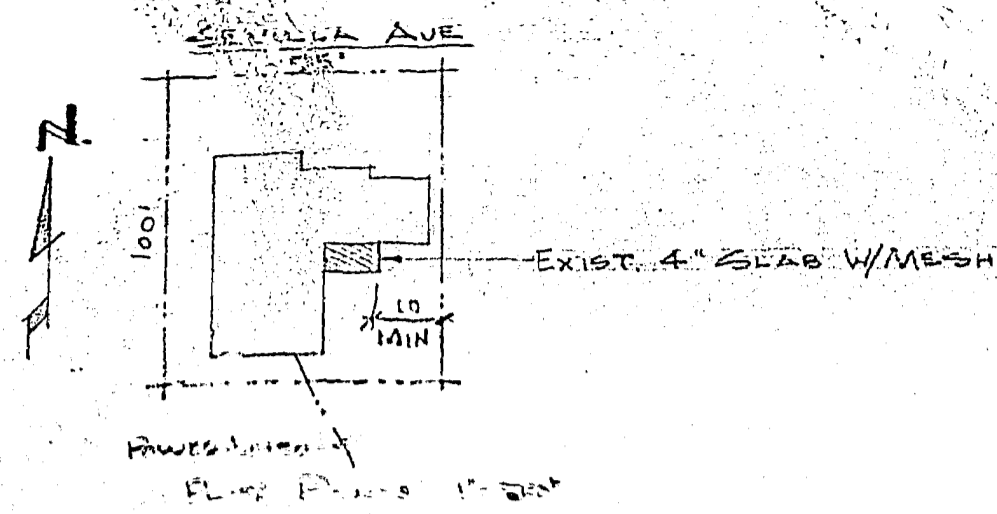
MISC:
 (1) 42 GAL. VCR DE. ELEC. RAL HIGH WATER HEATER W/ 10 YEAR WARRANTY; (2) TEMPORARY WATER CLOSET INCLUDED; INSTALL (4) HOSE BIBBS; ALL COPPER WATER PIPE IN BLDG. CONNECT TO OWNER'S SEPTIC TANK AS SHOWN; 5 FT. FROM BLDG. CONNECT TO OWNER'S WATER SERVICE IN REAR, METER & TAP BY OTHERS.



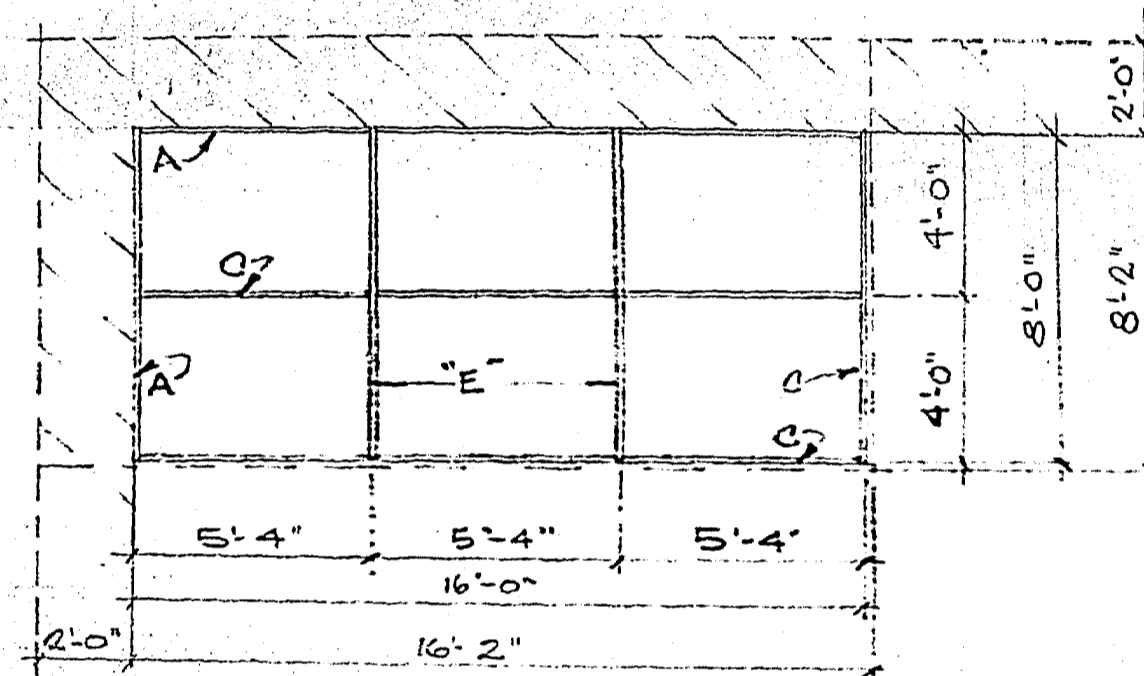
RIGHT ELEVATION 1/4" = 1'-0"

Residence for Mr. Dominick Manica
 Miami, Florida
JAMES P. SAMPSON - ARCHITECT
 9410 SW 60 TERRACE, MIAMI, FLORIDA - PHONE 667-5096

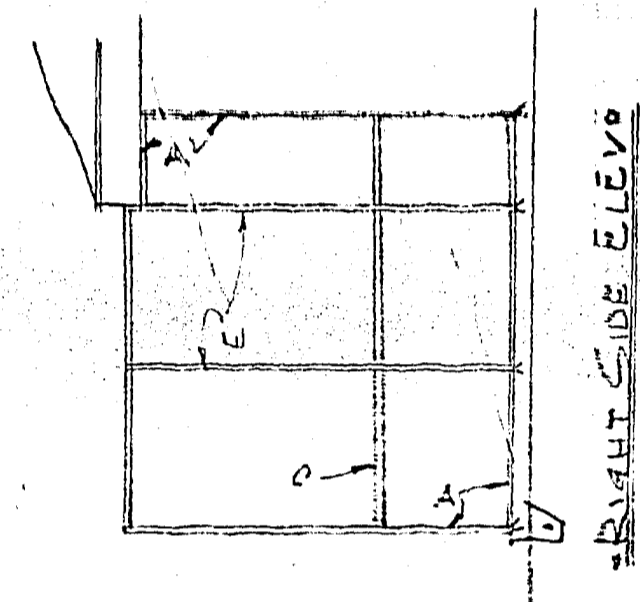
DATE: 12-11-61
 DRAWN BY: RH - JPS
 CHECKED BY: JPS
 COMM 6130
 2



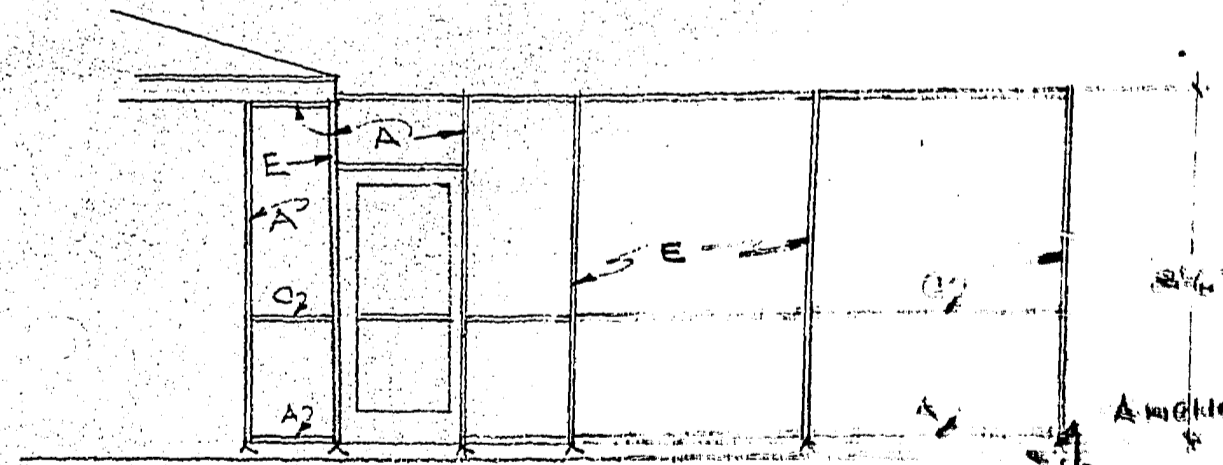
LEGAL DESCRIPTION
 LOT 12 #3
 BLOCK #1
 SUBD. CORAL GABLES CRAFT SECT.
 PB. 10, PG. 79



ROOF PLAN
 1/4" = 1'-0"



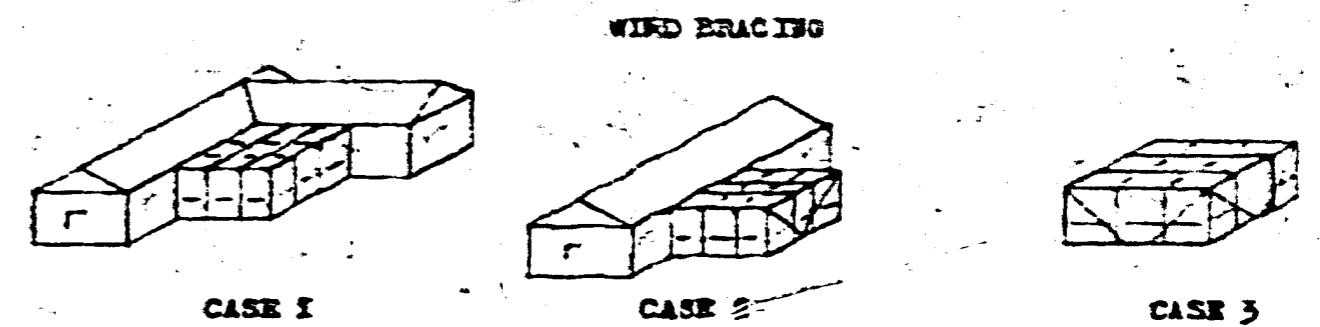
RIGHT SIDE ELEVATION



FRONT ELEVATION
 1/4" = 1'-0"

GENERAL ALUMINUM FABRICATORS, INC. 270 EAST 10th AVENUE HIALEAH, FLORIDA	
ENCLOSURE FOR MR. DOMINICK MARSICO CORAL GABLES, FLA DADE COUNTY	
DESIGNED BY SMITHGARDNER & ASSOCIATES	SHEET NO.
CONSULTING ENGINEERS	DATE 12-15-61
2600 W. FLAGLER ST. MIAMI, FLORIDA	JOB NO.

MARK	ALLOY	BEAM SCHEDULE										SPACING C.C.	MAX. SPAN FT. AS BEAM	WOOD SCREENS RECD. FASCIA	BEAM SHAPES & ASSEMBLIES	
		P2	P3	t1	t2	t3	t4	t5	t6	t7	t8					
A	6063-T5	1	2x2	.050	.050	.050	.250	.280	.166	.166						
B																
C	6063-T5	1	2x2	.040	.040	.040	.250	.280	.166	.166						
D	6063-T6	2	2x3	.800	.045	.050	.250	.840	.844	.560	7'-0"	8'-0"	BOLTS @ 12" C.C.			
E	6063-T6	2	2x4	.978	.064	.064	.375	.852	1.88	.940	7'-0"	9'-1"	BOLTS @ 18" C.C.	2-#16 GA. *		
F	6063-T6	2	2x4	1.19	.064	.067	1.00	1.01	2.14	1.07	7'-0"	13'-6"	BOLTS @ 20" C.C.	2-#16 GA. *		
G	6063-T6	2	2x6	1.71	.082	.140	1.00	1.45	8.03	2.68	7'-0"	20'-4"	BOLTS @ 24" C.C.	2-#20 GA. *		
H																
J	6063-T6	2	2x7	2.27	.070	.200	1.00	1.91	14.3	4.09	7'-0"	24'-0"	BOLTS @ 24" C.C.	2-#24 GA. *		



WIND BRACING

CASE 1 SCREEN ENCLOSURES WITH ONE OR LESS FREE STANDING CORNERS REQUIRE NO WIND BRACING.

CASE 2 SCREEN ENCLOSURES WITH TWO OR MORE FREE STANDING CORNERS REQUIRE VERTICAL (SIDE) BRACING AT EACH FREE STANDING CORNER. SEE SIDE AND END ELEVATIONS. SEE ROOF PLAN FOR ROOF BRACING, IF REQUIRED.

CASE 3 SCREEN ENCLOSURES WITH ALL CORNERS FREE STANDING, REQUIRE VERTICAL (SIDE) BRACING AT EACH CORNER EACH WAY. SEE SIDE ELEVATIONS, SEE ROOF PLAN FOR ROOF BRACING.

DESIGN CRITERIA: ALL SCREEN SURFACES, HORIZONTAL & VERTICAL, 10 PSF, UPLIFT 10 PSF.

ALUMINUM ALLOYS: YIELD STRENGTHS SHOWN ARE MIN. UNLESS SHOWN OTHERWISE IN BEAM SCHEDULE.

6063-T5 Y.S. - 16 KSI, WORKING F - 9 KSI. 6061-T6 Y.S. - 35 KSI, WORKING F - 17.5 KSI.

6063-T6 Y.S. - 25 KSI, WORKING F - 12.5 KSI. 5005-B36 Y.S. - 23 KSI, WORKING F - 11.5 KSI.

WALL THICKNESSES ARE MINIMUM. METALS SHOWN HERE ARE ALUMINUM, EXCEPT BOLTS, NUTS, WASHERS, SCREWS, PIPE, TURNBUCKLES AND WIRE MAY BE ANTI-RUST PLATED STEEL, STAINLESS STEEL OR BRASS.

ALL COLUMNS, SILLS & JAMBS SHALL BE ANCHORED AS SHOWN. ANCHORS IN CONCRETE SHALL BE JORDAN PLASTIC EXPANSION PLUGS, THRESHOLD BOLTS OR LAG SCREWS IN LEAD SHIELDS SET IN HOLES DRILLED TO PROPER SIZE AND DEPTH BY ROTARY TYPE BIT. NO STAR DRILLS WILL BE PERMITTED. SUBSTITUTE ANCHORS MUST BE APPROVED BY THE ENGINEER.

ALL LOADS IMPOSED ON AN EXISTING STRUCTURE MUST BE TRANSFERRED TO A POINT WHERE THEY ARE SAFELY BORNE BY SUCH EXISTING STRUCTURE. ROOF AND SIDES SHALL BE COVERED WITH SCREEN MATERIAL, BEING 60% OR GREATER OPEN. THE ADDITION OF SOLID ROOFING OR SIDING MATERIAL OF ANY TYPE SHALL NOT BE PERMITTED UNLESS AUTHORIZED BY THE ENGINEER. ROOF SCREEN WIRE SHALL NOT BE SPUN TO ROOF PURLINS. LATCHES ON DOORS ON SWIMMING POOL ENCLOSURES SHALL BE 66" ABOVE THE THRESHOLD AND SHALL BE SELF-LATCHING AND SELF-LOCKING.

THIS SCREEN ENCLOSURE WAS DESIGNED AND TESTED IN ACCORDANCE WITH THE SOUTH FLORIDA BUILDING CODE METROPOLITAN DADE COUNTY BUILDING AND ZONING DEPT. DESIGN CRITERIA AND TEST REQUIREMENTS FOR ALUMINUM SCREEN ENCLOSURES EFFECTIVE JAN. 1, 1961.

CONTRACTOR SHALL SUBMIT SETS OF PLANS TO THE BUILDING DEPARTMENT TO OBTAIN A BUILDING PERMIT. SETS OF PLANS SHALL CONSIST OF 1 PRINT OF MASTER DRAWING, 1 PRINT DRAWN TO SCALE SHOWING ROOF PLAN AND ALL SIDE ELEVATIONS, 1 PRINT SHOWING ELECTRICAL SERVICE, SEPTIC TANK AND DRAIN FIELD. CONTRACTOR MUST BE ABLE AT ALL TIMES TO VERIFY ALLOY AND TEMPER OF ALL ALUMINUM BEING USED.

PRINTS FOR BUILDING PERMIT PURPOSES ARE VALID ONLY WHEN THE ACTUAL PRINT IS SIGNED BY THE ENGINEER OVER HIS IMPRESSED SEAL.

THE SCREEN WIRE MATERIAL SHALL BLOW AWAY FREE OF THE SCREEN ENCLOSURE FRAME WHEN A WIND LOAD OF 10 PSF OR GREATER IS APPLIED. THE PLASTIC SPLINE HOLDING THE SCREEN WIRE IN PLACE SHALL CONFORM TO THE FOLLOWING MINIMUM PROPERTIES: (A) DILATATION HARDNESS OF 70 TO 90. (B) INCREASE IN TENSILE STRENGTH OF NOT GREATER THAN 20% WITH NO PLASTIC DEFORMATION WHEN TESTED IN ACCORDANCE WITH ASTM DESIGNATION D13-311 AFTER 2000 HOURS OF ACCELERATED WEATHERING CONDUCTED IN ACCORDANCE WITH ASTM DESIGNATION E42-57T.

6063-T6 ALUMINUM ALLOY BEAMS WILL BEAR EXTREME IDENTIFICATION MARK STAMPED 1-1/4" FROM EACH END OF BEAM. FOLLOWING ARE APPROVED MARKS, BOX 6063-T6, MK 63-T6, JALEX 6063-T6

- 1 - 1/4" BOLTS SPACED AS SHOWN IN BEAM SCHED.
- 2 - TYPE "B" TEOO CORN. AT JOINTS (SEE 24)
- 3 - 2" NOM. FASCIA 1 5/8" MIN.
- 4 - 1/4" WOOD SCREWS 2 1/2" LG. @ 18" C.C.
- 5 - 1/4" LAG SCREWS 2 1/2" LG. @ 18" C.C. MAX. IN JORDAN ANCHORS OR EQUAL.
- 6 - 1/8" x 1/2" STRAP WITH 6-#10 S.M. SCREWS
- 7 - ALL BEAMS DEEPER THAN 4"
- 8 - 1-1/2" x 2" x 1/8" 1" LONG
- 9 - 2-#10 S.M. SCREWS EACH SIDE
- 10 - SEE BEAM SCHEDULE FOR WOOD SCREWS.
- 11 - WHEN ANCHORING TO MASONRY USE 2- 1/4" LAG SCREWS 2 1/2" LG. IN JORDAN ANCHORS #1020
- 12 - L 2" x 2" x 1/8" x 2" LONG
- 13 - 2- 1/4" LAG SCREWS x 2 1/2" LONG IN JORDAN ANCHORS
- 14 - CHAIR RAIL 1/4" #10 S.M. SCREWS 1 1/2" LONG
- 15 - PURLINE 1/4" #10 S.M. SCREWS EA. END 1 1/2" LONG
- 16 - 1-TYPE "A" BEAM, 2-#10 S.M. SCREWS EACH END 1 1/2" LONG
- 17 - 1-TYPE "A" BEAM CONTINUOUS.
- 18 - CUT FROM MEMBER "J"
- 19 - 2" x 2" x 1/8" PLATE, 1/4" #10 S.M. SCREWS PLATE EACH SIDE OF BEAM.
- 20 - 5/16" WELDED EYE SCREW IN RAWL PLUG NO. 9072 7/16" HOLES.
- 21 - 4" CONCRETE SLAB WITH MESH, 8" x 8" TURNDOWN FTO. 1/4" BAR CONT.
- 22 - 1/16" EYE BOLT WELDED EYE.
- 23 - 3/16" STAINLESS STEEL CABLE.
- 24 - 2/8" STAINLESS STEEL CABLE.
- 25 - NICOPRESS OVAL SLEEVE.
- 26 - 1 3/4" x 1 3/4" x 1/8" CHANNEL 3" LONG.
- 27 - 1 3/4" x 1 3/4" x 1/8" BOX 3" LONG.
- 28 - ALTERNATE FOR ITEM 2, USE 2" GA. WOOD SCREWS MIN. 1 1/2" PENETRATION INTO ENDS OF EACH RAFTER.
- 29 - 1/4" x 1/8" PLATE WITH 1/4" #10 S.M.S.

REVISED 5-16-61
REVISED 1-26-61

CARR SMITH & ASSOCIATES
2800 WEST FLAGLER, MIAMI, FLORIDA
CONSULTING ENGINEERS

DATE: 4-81 DRAWN BY: [] CHECK BY: [] FILE NO: [] SHEET NO: []
CONTRACTOR SHALL VERIFY ALL DIMENSIONS AT SITE BEFORE PROCEEDING WITH WORK. GO/OK

SCREEN ENCLOSURE TYPICAL DETAILS

