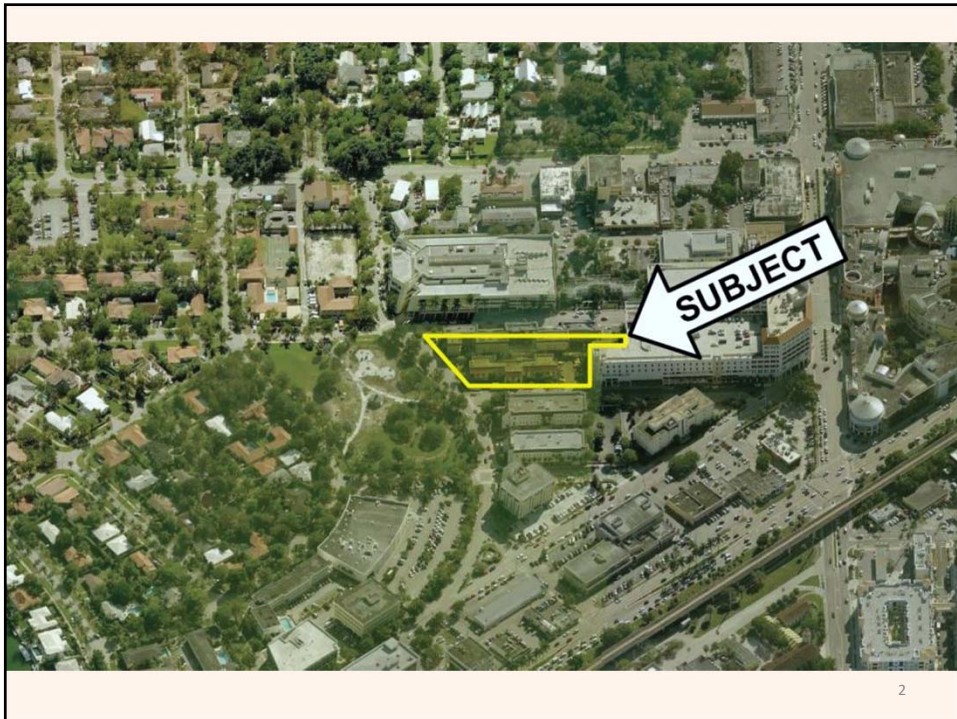




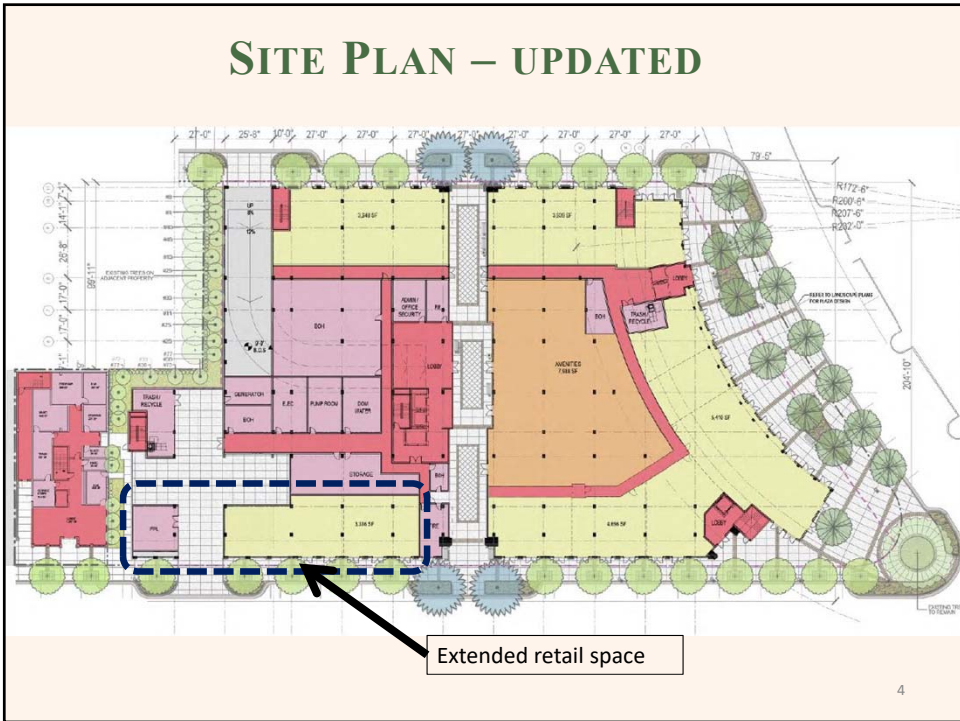
# Venera

COMPREHENSIVE PLAN MAP  
AMENDMENT  
ZONING MAP AMENDMENT  
MIXED USE SITE PLAN

CITY COMMISSION  
MAY 22, 2018

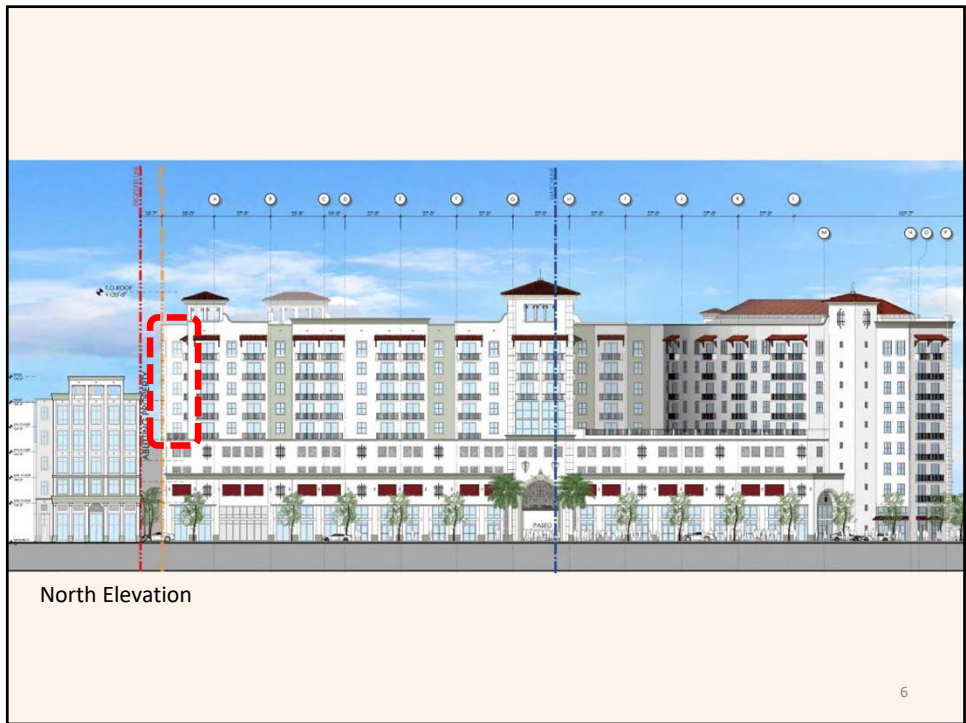


	May 8, 2018 Submittal	May 22, 2018 Updated Plans	Change
Height	97 ft./9 stories	97 ft./9 stories	No Change
Proposed FAR	3.48 (270,281 sq. ft.)	3.34 (259,220 sq. ft.)	Decrease of 11,061 sq. ft.
Proposed Density	93 units/acre	84 units/acre	Decrease of 9 units/acre
One-Bedroom	57	23	Decrease of 34 one-bedroom units
Two-Bedroom	54	20	Decrease of 34 two-bedroom units
Three-Bedroom	54	107	Increase of 53 three-bedroom units
Total Residential Units	165	150	Total decrease of 15 Residential Units
Commercial space (ground floor)	20,000 sq. ft.	21,000 sq. ft.	Increase of 1,000 sq. ft.
Office space (on 1537 San Remo Ave)	15,363 sq. ft.	15,363 sq. ft.	No change
Parking Spaces	356	356	No change





5



North Elevation

6



7

*Venera*

---

COMPREHENSIVE PLAN MAP  
AMENDMENT  
ZONING MAP AMENDMENT  
MIXED USE SITE PLAN

CITY COMMISSION  
MAY 22, 2018