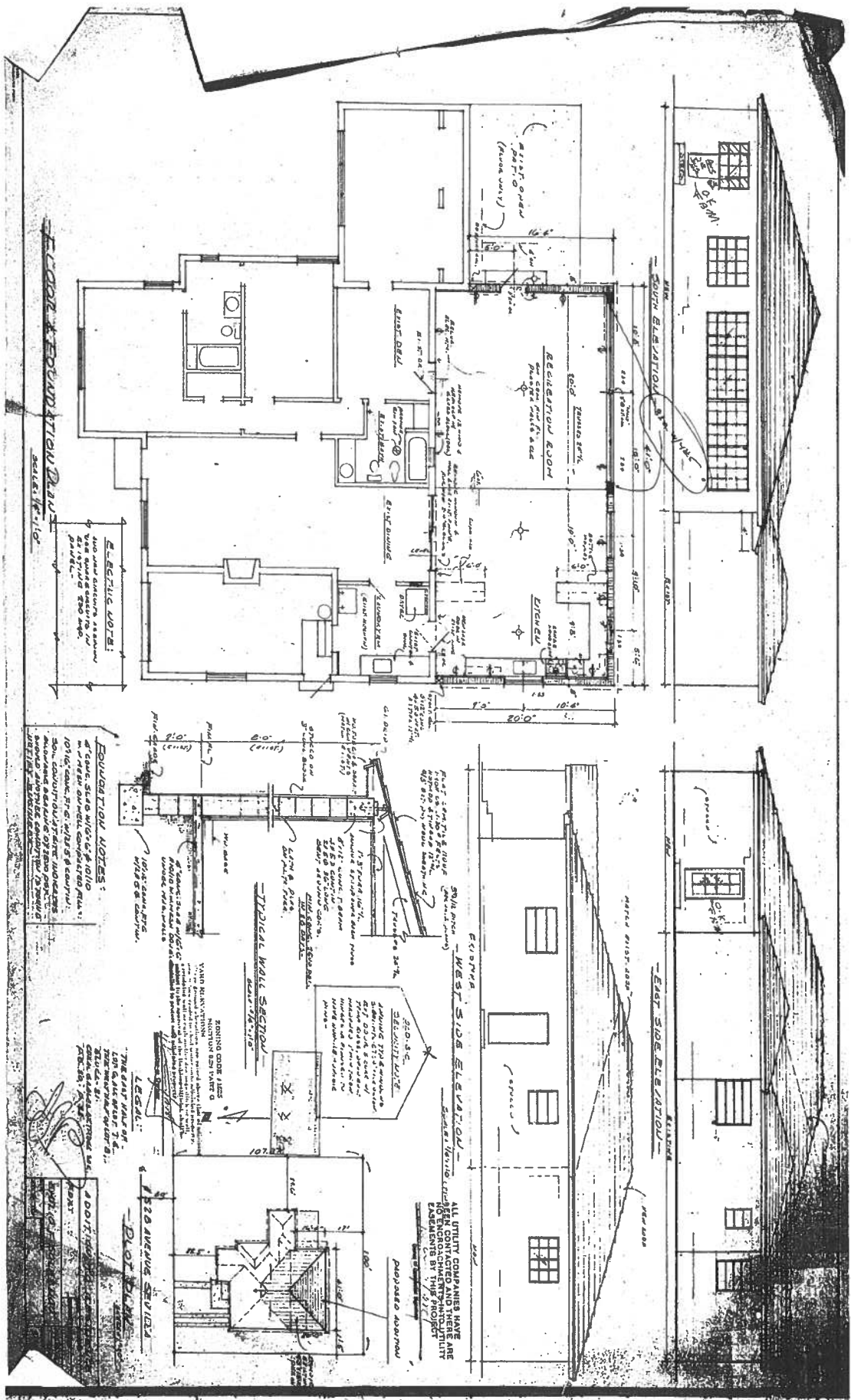


**241931 B**



FIELD INSPECTIONS

PLUMBING UNIT NO. 4-8-89 DATE 4-23-77  
FOUNDATION 23-77 COLUMN 4-8-89  
GALVE BALK. 4-8-89 MATE BALK. 4-8-89  
C/A 4-8-89 LATHING 4-8-89  
SUB-FLOOR, 1st 4-8-89 CORRUG. 4-8-89  
SUB-FLOOR, 2nd 4-8-89 INS. STOP 4-8-89  
FLOOR BALK. 4-8-89 GARAGE FLOOR 4-8-89  
TR. BALK., 1st 4-8-89 ROOMING 4-8-89  
TR. BALK., 2nd 4-8-89 PLUMBING 4-8-89  
AIR COND. 4-8-89 SERVICE 4-8-89  
FINAL 4-8-89 SERVICE 4-8-89  
MISC. 4-8-89

PLUMBING 4-8-89 SERVICE 4-8-89  
SERV. UNIT 4-8-89 SERVICE 4-8-89  
SERV. 4-8-89 SERVICE 4-8-89  
GROUND 4-8-89 SERVICE 4-8-89  
ROOFING 4-8-89 SERVICE 4-8-89  
TR. C/A 4-8-89 SERVICE 4-8-89

THE C/A 4-8-89 SERVICE 4-8-89