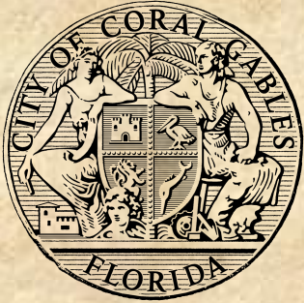


City of Coral Gables
Historic Preservation Board

July 16, 2009



City of Coral Gables
Historic Preservation Board
Historical Resources Department

AD VALOREM TAX RELIEF: **CASE FILE AV 2006-06**

An application requesting ad valorem tax relief for the Hotel Place St. Michel located at 162 Alcazar Avenue, a local historic landmark, legally described as Lots 3 and 4, Block 24, Coral Gables Section “L”, according to the Plat thereof, as recorded in Plat Book 8, at Page 85, of the Public Records of Miami-Dade County, Florida. The related Certificates of Appropriateness – Case File COA (ST) 2006-38 and COA (ST) 2006-67, were granted design approval on June 23, 2006 and October 18, 2006, respectively by the Historical Resources Staff.



SCALE: N.T.S.



Diagram illustrating the proposed 3-story building layout. The building is situated on a triangular plot. The dimensions of the plot are 128.06' (top horizontal boundary), 8.67' (right vertical boundary), and 79.85' (left vertical boundary). The building footprint is labeled "EXISTING 3 STORY BUILDING". A "STORAGE ROOM" is indicated in the top-left corner. A "TOWER" is located within the building footprint. The plot is bounded by a "149.72' ALLEY" on the right side.

SITE PLAN
SCALE: 3/32" = 1'-0"

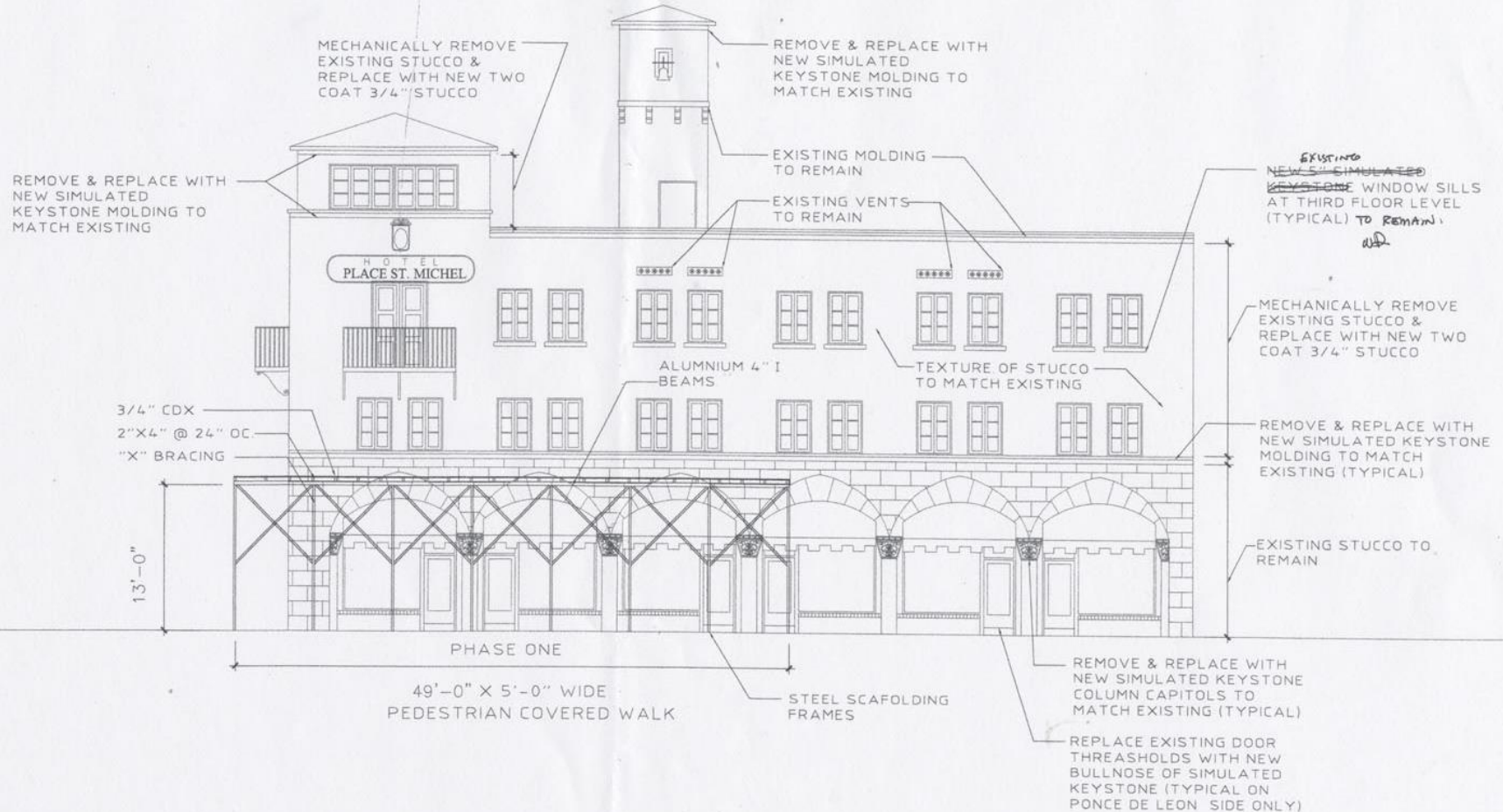


RECEIVED
CITY OF CORAL GABLES
HISTORICAL RESOURCES
2006 JUN 23 PM 12:13

COA(5F)
2006-40
20
6/23/06

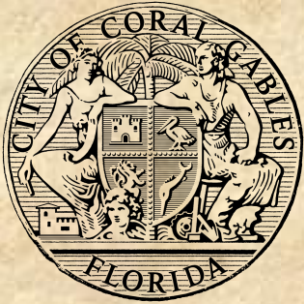


City of Coral Gables
Historic Preservation Board
Historical Resources Department



WEST ELEVATION (PONCE DE LEON)-PHASE 1

SCALE: 3/16" = 1'-0"

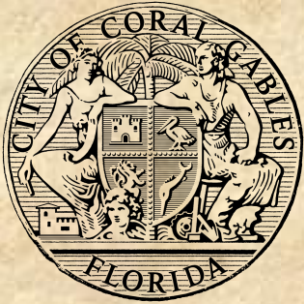


City of Coral Gables
Historic Preservation Board
Historical Resources Department

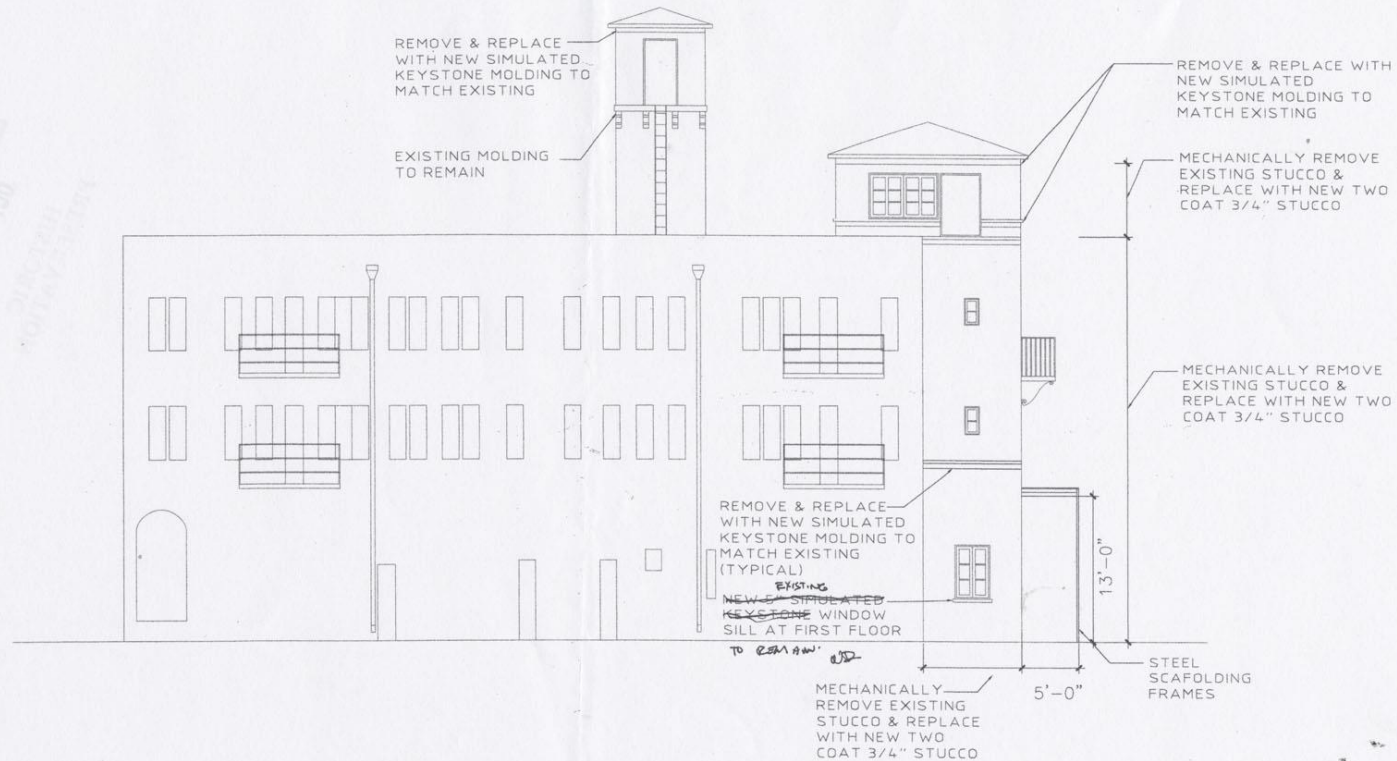


WEST ELEVATION (PONCE DE LEON)-PHASE 2

SCALE: 3/16" = 1'-0"

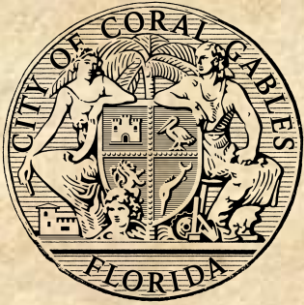


City of Coral Gables
Historic Preservation Board
Historical Resources Department

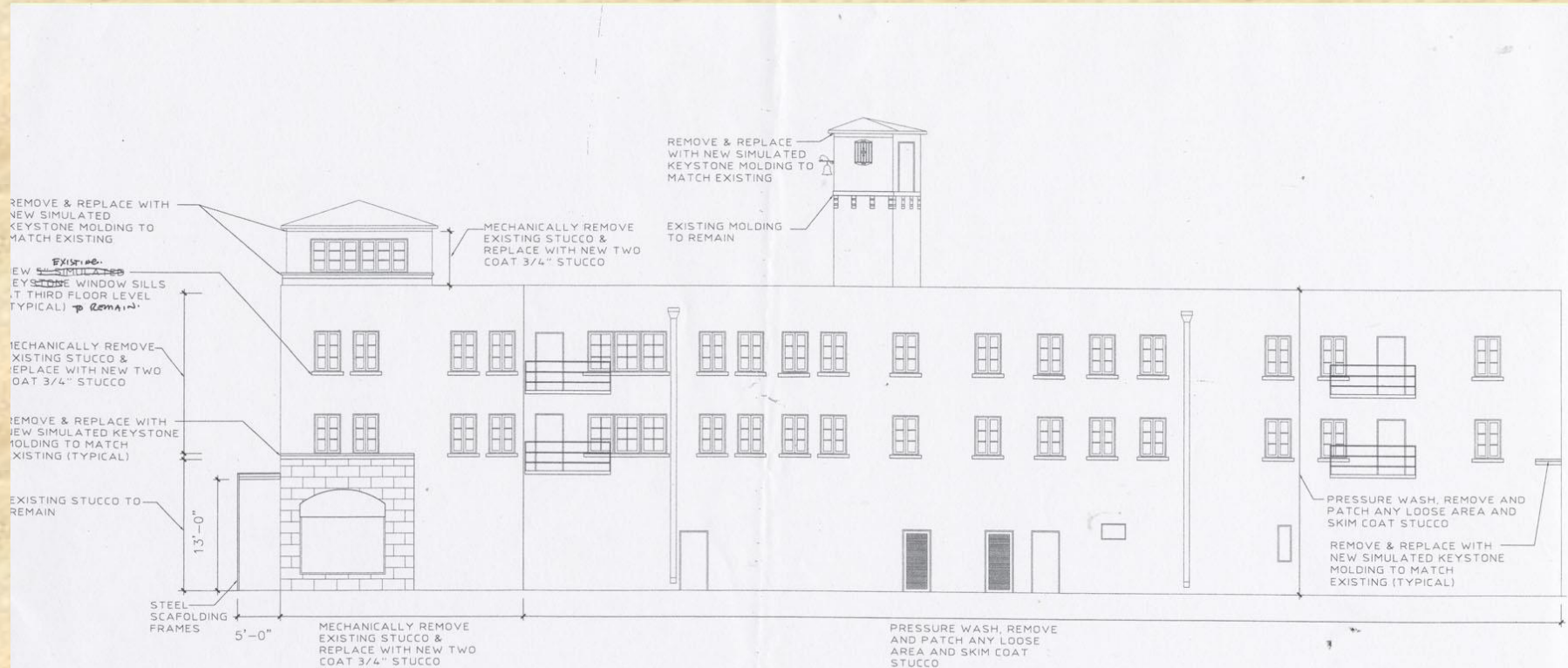


EAST ELEVATION (ALLEY)

SCALE: 3/16" = 1'-0"

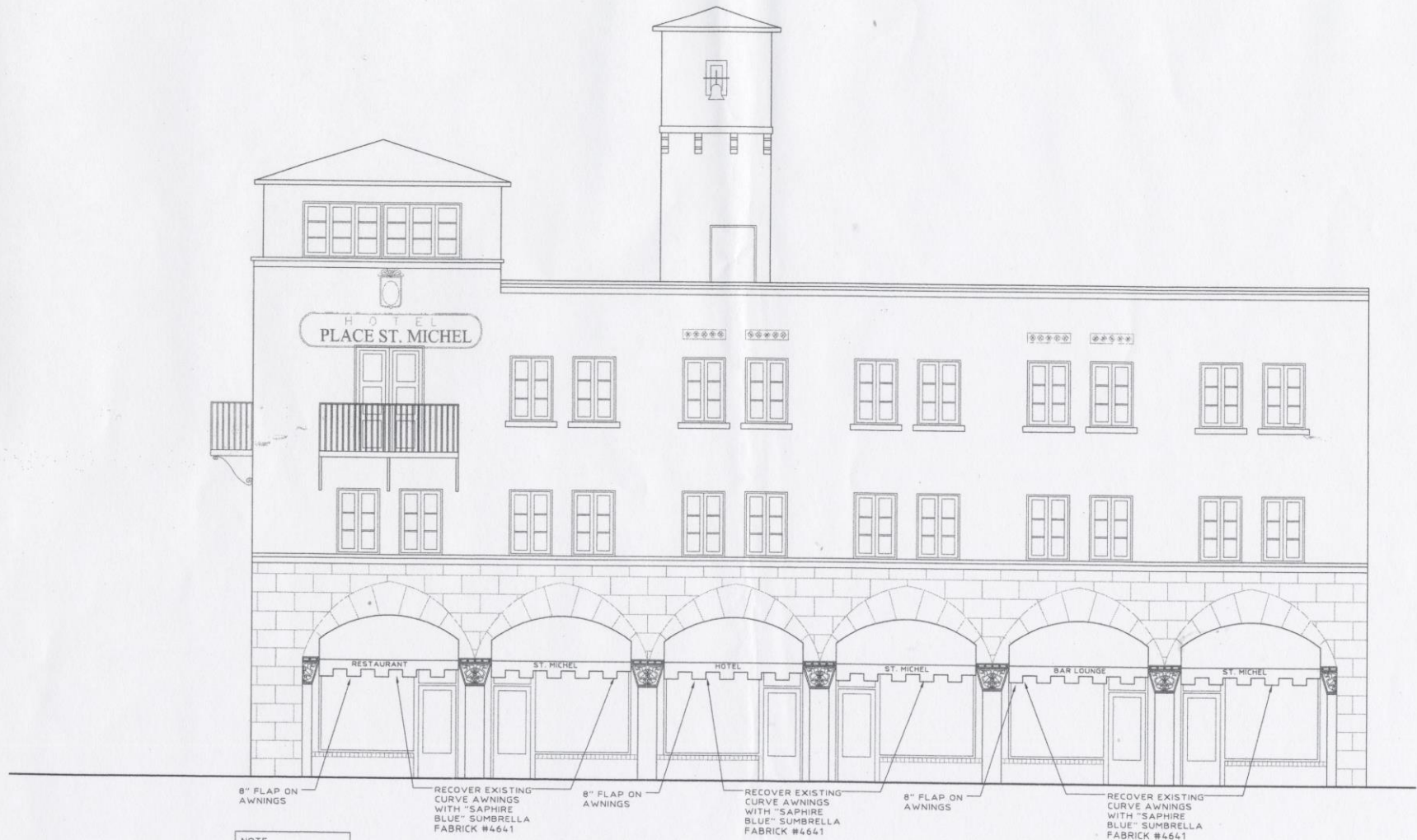


City of Coral Gables
Historic Preservation Board
Historical Resources Department



SOUTH-EAST ELEVATION (ALLEY)

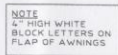
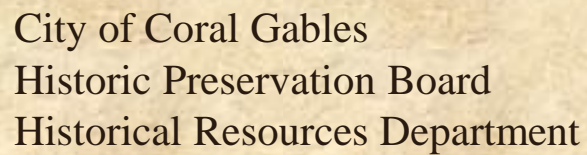
SCALE 3/16" = 1'-0"



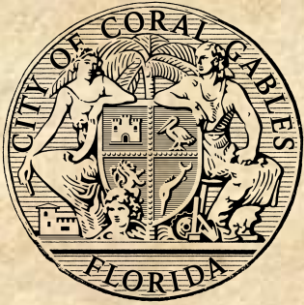
NOTE
4" HIGH WHITE
BLOCK LETTERS ON
FLAP OF AWNINGS

EXISTING WEST ELEVATION (PONCE DE LEON)

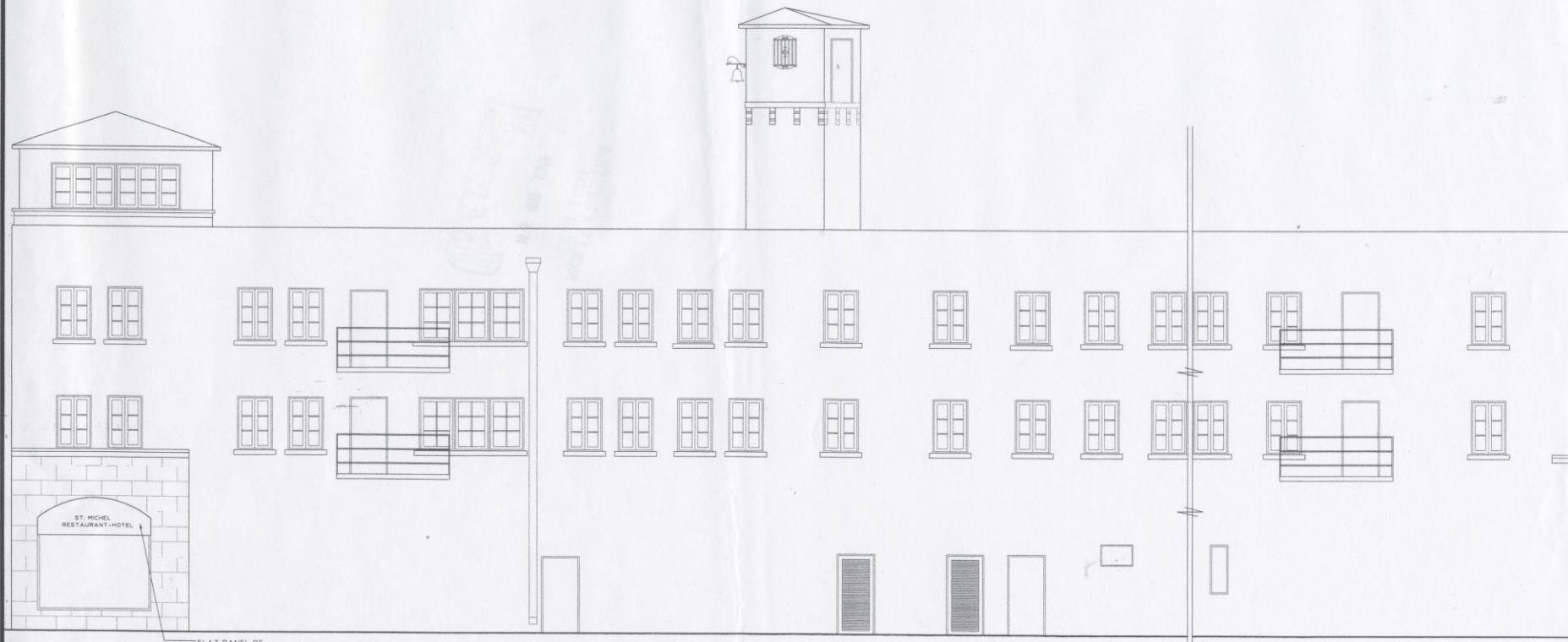
SCALE: 1/4" = 1'-0"



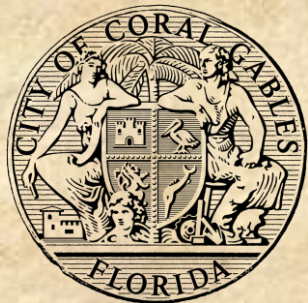
SCALE: 1/4" = 1'-0"



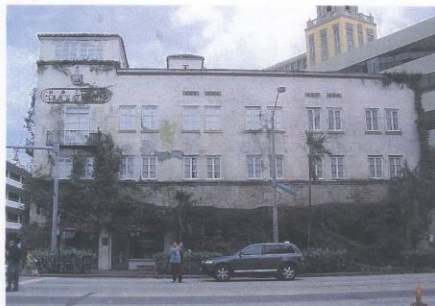
City of Coral Gables
Historic Preservation Board
Historical Resources Department



EXISTING SOUTH-EAST ELEVATION (ALLEY)
SCALE: 1/4" = 1'-0"



City His His



AV2006-06 - 162 Alcazar Ave
(Hotel St. Mitchell)

3



AV2006-06 - 162 Alcazar Ave
(Hotel St. Mitchell)



City
His
His



AV2006-06 - 162 Alcazar Ave
(Hotel St. Mitchell)

1

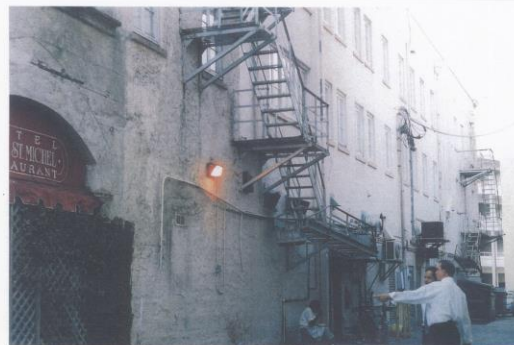


AV2006-06 - 162 Alcazar Ave
(Hotel St. Mitchell)

2



AV2006-06 - 162 Alcazar Ave
(Hotel St. Mitchell)



AV2006-06 - 162 Alcazar Ave
(Hotel St. Mitchell)



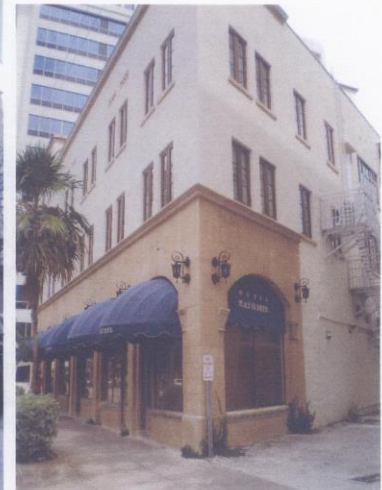


AV2006-06 - 162 Alcazar Ave
(Hotel St. Mitchell)

9



AV2006-06 - 162 Alcazar Ave
(Hotel St. Mitchell)



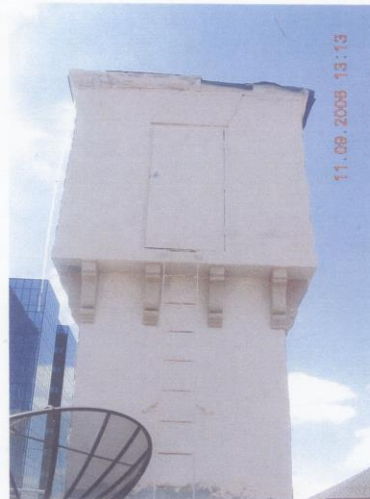
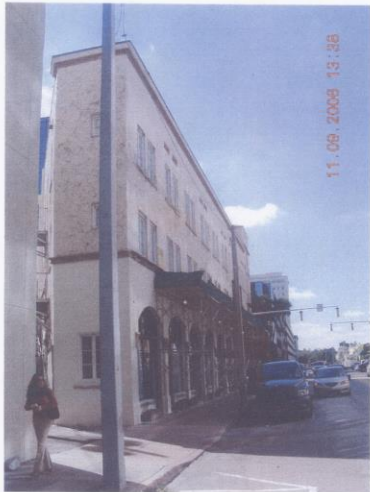


AV2006-06 - 162 Alcazar Ave
(Hotel St. Mitchell)

13

AV2006-06 - 162 Alcazar Ave
(Hotel St. Mitchell)

22





AV2006-06 - 162 Alcazar
(Hotel St. Mitchell)

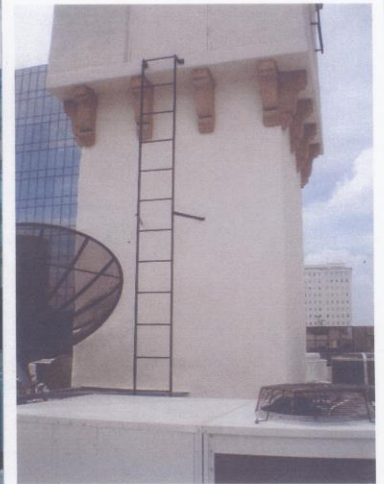
AV2006-06 - 162 Alcazar

nt



AV2006-06 - 162 Alcazar Ave
(Hotel St. Mitchell)

10





AV2006-06 - 162 Alcazar Ave
(Hotel St. Mitchell)

23



AV2006-06 - 162 Alcazar Ave
(Hotel St. Mitchell)



