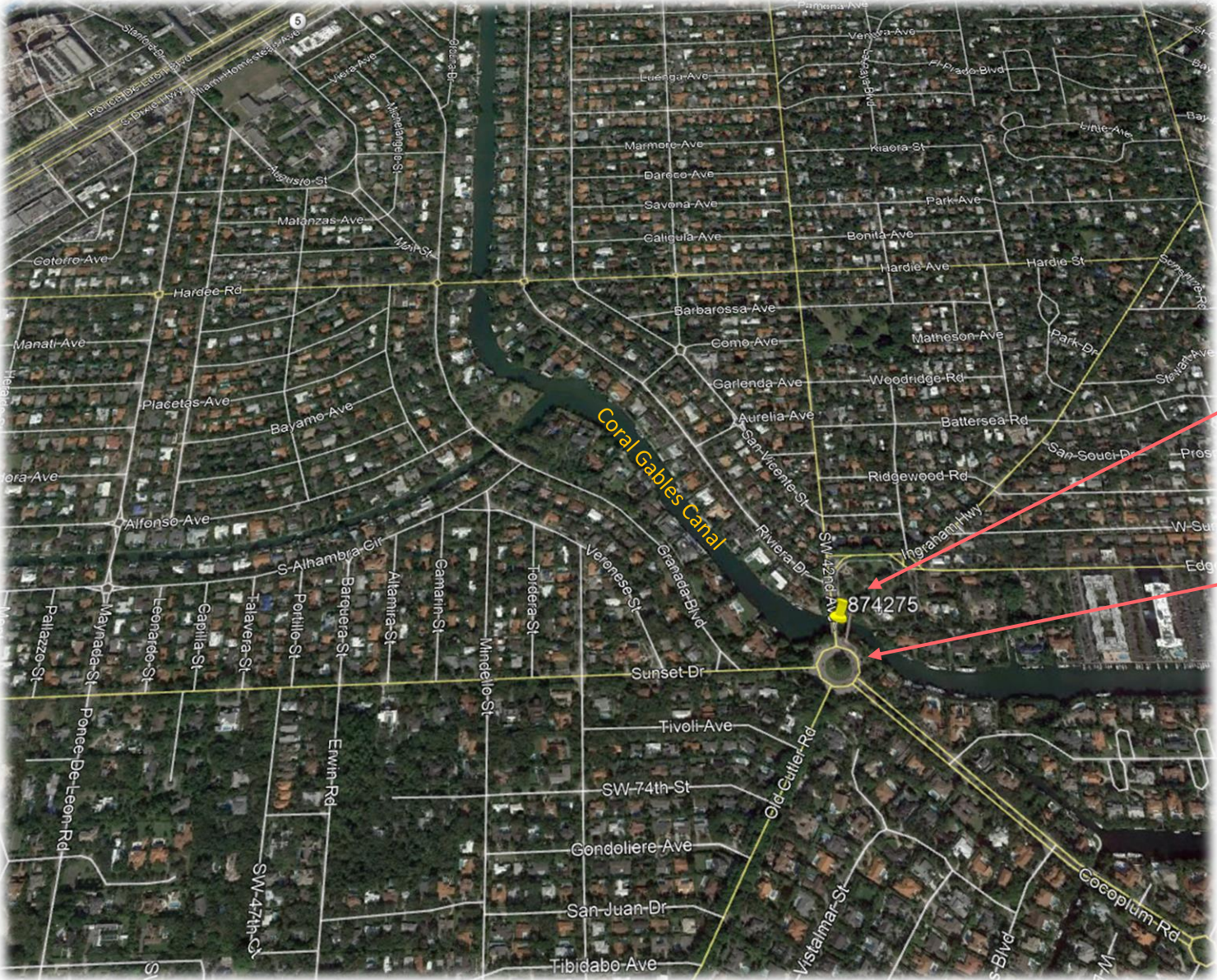


Cocoplum Bridge Replacement



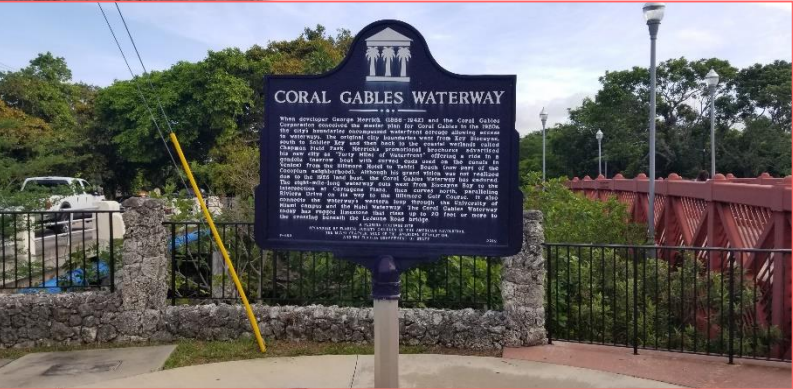
BRIDGE LOCATION & SURROUNDINGS



Ingraham Terrace
Park

Cocoplum Circle/
Cartagena Park

COCOPLUM CIRCLE BRIDGE NO. 874275



EXISTING BRIDGE CONDITIONS

- ▶ Structurally Deficient
- ▶ Load Posted
- ▶ Functionally Obsolete
- ▶ Substandard Railings



BRIDGE CONDITION TIMELINE

- ▶ May 2018 - FDOT Bridge Inspection
- ▶ September 2018 – FDOT Load Rating identifies posting
- ▶ Sept 2019 – FDOT Load Rating reduced posting further
- ▶ Nov 2019 – FDOT Bridge Inspection - Serious condition
- ▶ Sufficiency rating = 7 (out of 100)



**FLORIDA DEPARTMENT OF TRANSPORTATION
BRIDGE MANAGEMENT SYSTEM**
Inspection/CIDR Report with PDF attachment(s)
Inspection

Structure ID: 874275
DISTRICT: D6 - Miami
INSPECTION DATE: 11/1/2

BY: Marlin Engineering, Inc.	STRUCTURE NAME: Not recorded
OWNER: 2 County Hwy Agency	YEAR BUILT: 1943
MAINTAINED BY: 2 County Hwy Agency	SECTION NO.: 87 067 501
STRUCTURE TYPE: 3 Steel - 02 Stringer/Girder	MP: 0.667
LOCATION: N Edge of Cocoplum Circle	ROUTE: 00000
SERV. TYPE ON: 5 Highway-pedestrian	FACILITY CARRIED: SW 42nd Avenue
SERV. TYPE UNDER: 5 Waterway	FEATURE INTERSECTED: Coral Gables Canal

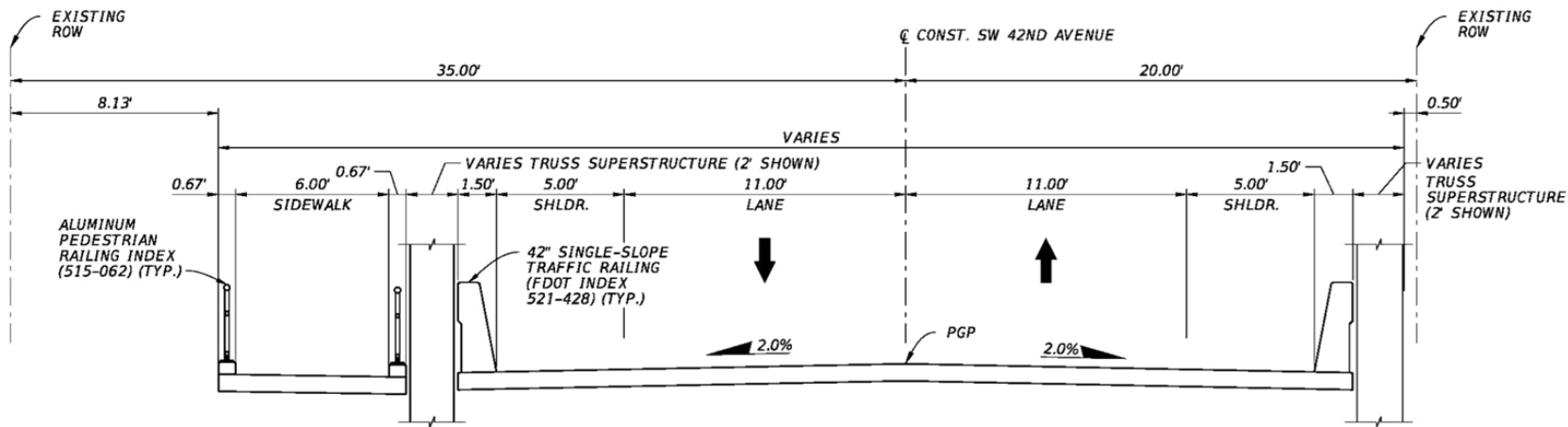
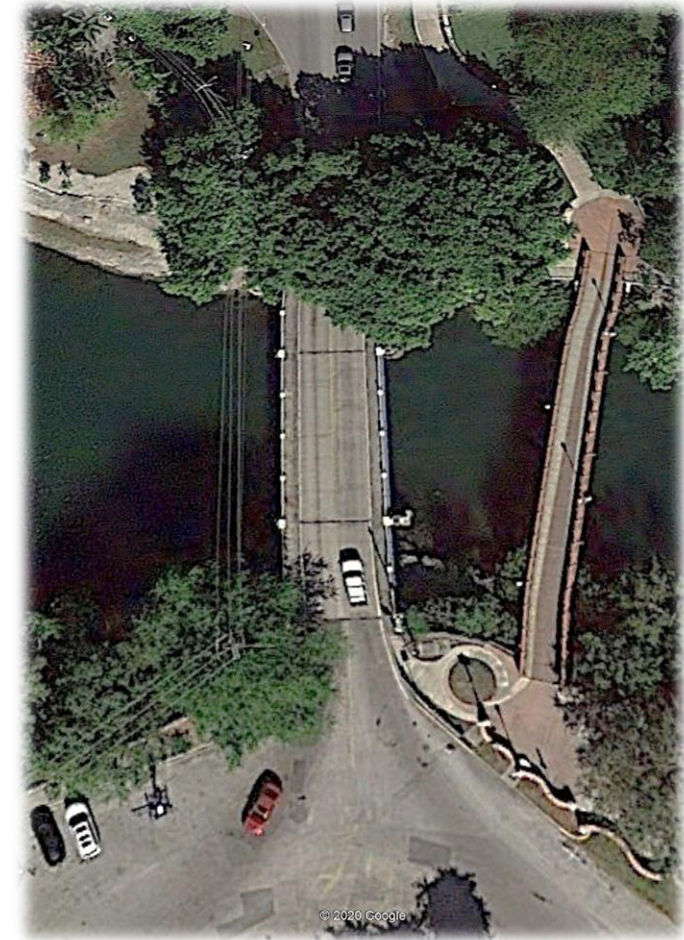
THIS BRIDGE CONTAINS FRACTURE CRITICAL COMPONENTS
 THIS BRIDGE IS SCOUR CRITICAL
 THIS REPORT IDENTIFIES DEFICIENCIES WHICH REQUIRE PROMPT CORRECTIVE ACTION
 FUNCTIONALLY OBSOLETE STRUCTURALLY DEFICIENT

TYPE OF INSPECTION: Interim
 DATE FIELD INSPECTION WAS PERFORMED: ABOVE WATER: 11/1/2019 UNDERWATER: 5/7/2018

OVERALL NBI RATINGS:

DECK: 6 Satisfactory	CHANNEL: 8 Protected
SUPERSTRUCTURE: 3 Serious	CULVERT: N N/A (NBI)
SUBSTRUCTURE: 7 Good	SUFF. RATING: 7
PERF. RATING: Poor	HEALTH INDEX: 58.49

- ▶ Bridge Replacement
 - Single Span Prefabricated Truss Bridge
- ▶ Roadway & Drainage
- ▶ Utility Coordination & Relocation
 - City of Coral Gables
 - Miami-Dade Water & Sewer
 - FPL
 - others
- ▶ Lighting Improvements
- ▶ Permitting
- ▶ Public Involvement



IMPROVEMENTS

- ▶ No Load Restrictions – Open to Unrestricted Use by Emergency Services
- ▶ Modern Traffic Barriers
- ▶ Increased Roadway Shoulders Across Bridge
- ▶ Sidewalks Separated from Roadway
- ▶ Improved Waterway



▶ Bridge Closure

▶ Utility Impacts

- Relocation / Replacement of Utilities Adjacent to Bridge

▶ North Approach

- Trees
- Lighting
- Sidewalk Modifications
- Decorative Walls

▶ Cocoplum Circle

- Lighting
- Decorative Walls



UTILITY COORDINATION



- ▶ South Florida Water Management District/
Florida Dept. of Environmental Protection
- ▶ US Coast Guard
- ▶ MDC Dept. of Regulatory & Economic
Resources
- ▶ City of Coral Gables
- ▶ Florida Division of Historical Resources



▶ Design Phase *On-Going*

- **April 2020** Notice to Proceed
- **July 2020** 60% Plans Submitted
- **September 2020** 100% Plans Submitted
- **October 2020** Final Construction Documents

▶ Construction Phase

- **Fall 2020** Contractor Procurement & NTP
- **Spring 2023** Substantial Completion



QUESTIONS?

