

*Alhambra Circle Entrance on
Douglas Road*

June 10, 2025

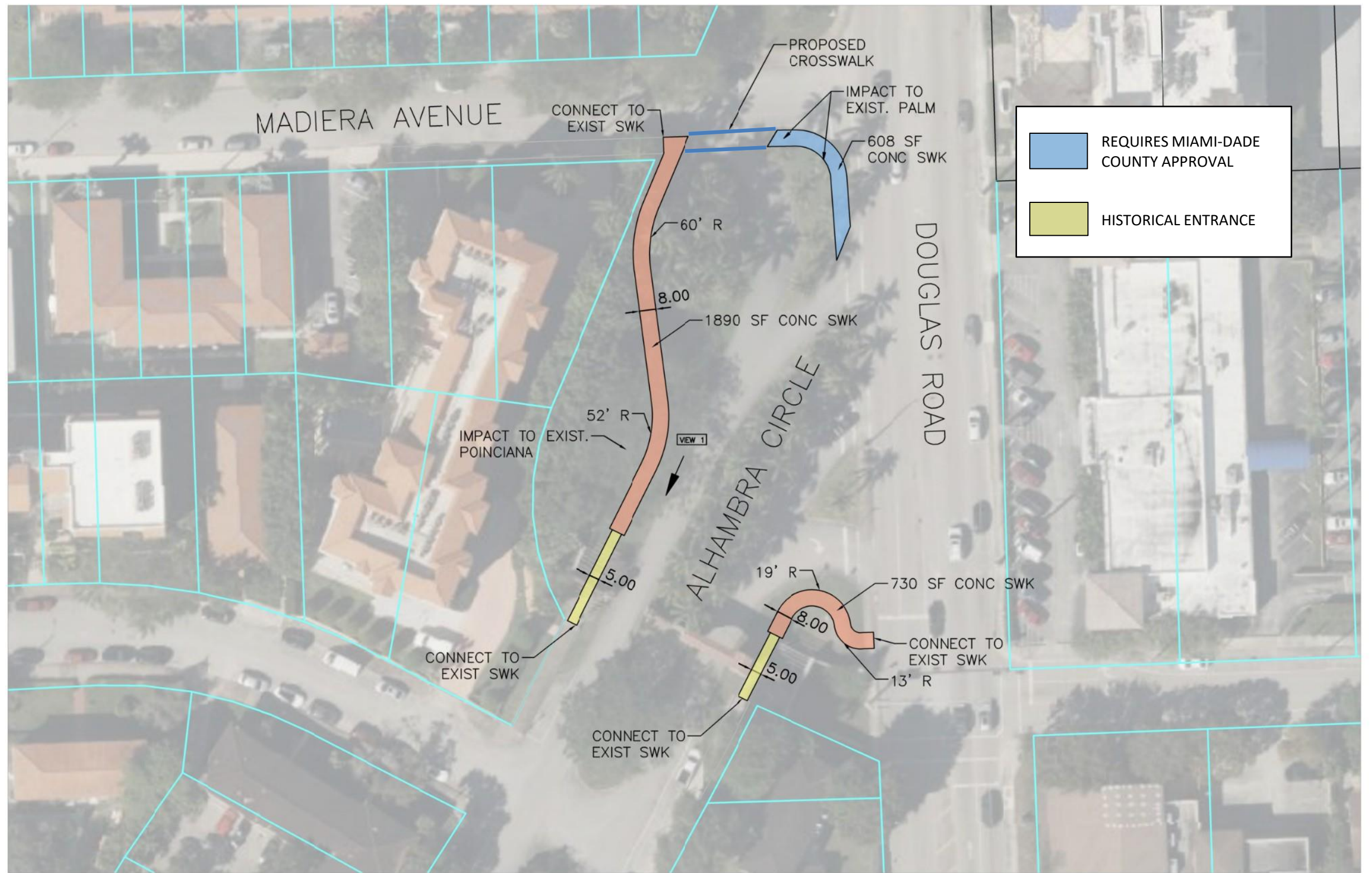
CORAL
GABLES®
THE CITY BEAUTIFUL



PLAN VIEW

2

2



POTENTIAL IMPACTS

2

2



- Uneven surface through historical entrance
- Royal Poinciana tree branch blocking entrance walkway on North side
- Tree trimming will expose tree to potential decay
- Recommend tree removal

Thank you!

Public Works Department: *Keeping the City Beautiful Yesterday, Today & Tomorrow*

PWDepartment@coralgables.com

**CORAL
GABLES**
THE CITY BEAUTIFUL