

**Scoring Club**

1300 Ponce De Leon Blvd, Suite #103

Coral Gables, FL 33134

dustin@scoring.club

786-684-2329

**June 18, 2025**

To Whom It May Concern:

**Subject: Letter of Intent – Self-Serve Beer and Wine at Scoring Club**

Scoring Club is a membership-based, indoor golf club offering an elevated experience through the use of TrackMan simulators, a PuttView putting green, and a retail golf shop. As part of our ongoing commitment to enhancing the premium experience for our members, we intend to introduce a self-serve beer and wine offering within our facility.

To ensure a safe and controlled implementation, we propose a self-serve model integrated with a point-of-sale system, overseen at all times by a designated staff member. Members will be able to select their beverage, complete their transaction at the point of sale, and return to their simulator bay or lounge area to enjoy it. This model maintains an upscale, relaxed atmosphere while providing proper supervision and accountability.

We will only serve pre-packaged food, with no food preparation or cooking on-site. This supports our goal of offering convenient, light refreshments while preserving the club's clean and efficient layout.

Alcohol service will be available exclusively to Scoring Club members and their registered guests, and only during our regular operational hours of 8:00 AM to 9:00 PM, seven days a week. The self-serve area will be restricted to eligible patrons and monitored closely by staff to ensure compliance with all applicable laws, including those concerning responsible consumption. We will not offer service to the general public or provide any carry-out options.

The club's seating layout is designed to support comfort and functionality:

- **Total seating capacity:** Approximately 40 seats
- **Refreshment area:** 4 seats
- **Two lounge areas:** 7–8 seats each
- **Five simulator bays:** 4 seats each

In accordance with Section 6-4 of the City of Coral Gables Zoning Code, we confirm the following:

- A valid **Certificate of Use (CU)** was issued on **November 26, 2024**, and Scoring Club maintains an active **Business Tax Receipt (BTR)**.

- Alcohol sales will be **strictly incidental** to the facility's primary use as a recreational indoor golf club.
- The proposed refreshment area will include a **limited self-pour counter**, remaining under the **45 square foot permanent bar/counter limit** set forth in subsection (b)(3).
- Total **annual alcohol sales will not exceed 25%** of total gross receipts. We will maintain **financial records available for inspection** in accordance with subsection (b)(4).
- We understand and accept that the facility will be **subject to inspection** by the **City Manager or designee** to confirm compliance, as stipulated in subsection (b)(5).

We believe this model is consistent with the intent of Section 6-4 of the City Code and offers a thoughtful, responsible approach to beverage service in a non-restaurant, private membership setting. We are confident that our proposed system supports both member satisfaction and public safety.

We appreciate your consideration of this proposal and welcome the opportunity to provide any additional information or clarification as needed.

Sincerely,

**Dustin Ridgeway**

Owner

Scoring Club

1300 Ponce De Leon Blvd, Suite #103

Coral Gables, FL 33134

dustin@scoring.club

786-684-2329

REVISIONS:

8.14.2025

PROJECT NAME:

SCORING  
CLUB

PROJECT

ADDRESS:

PROJECT No.

SCALE:

1/4" = 1'-0"

DATE:

6.25.2025

DRAWN:

DOIMG

CHECKED:

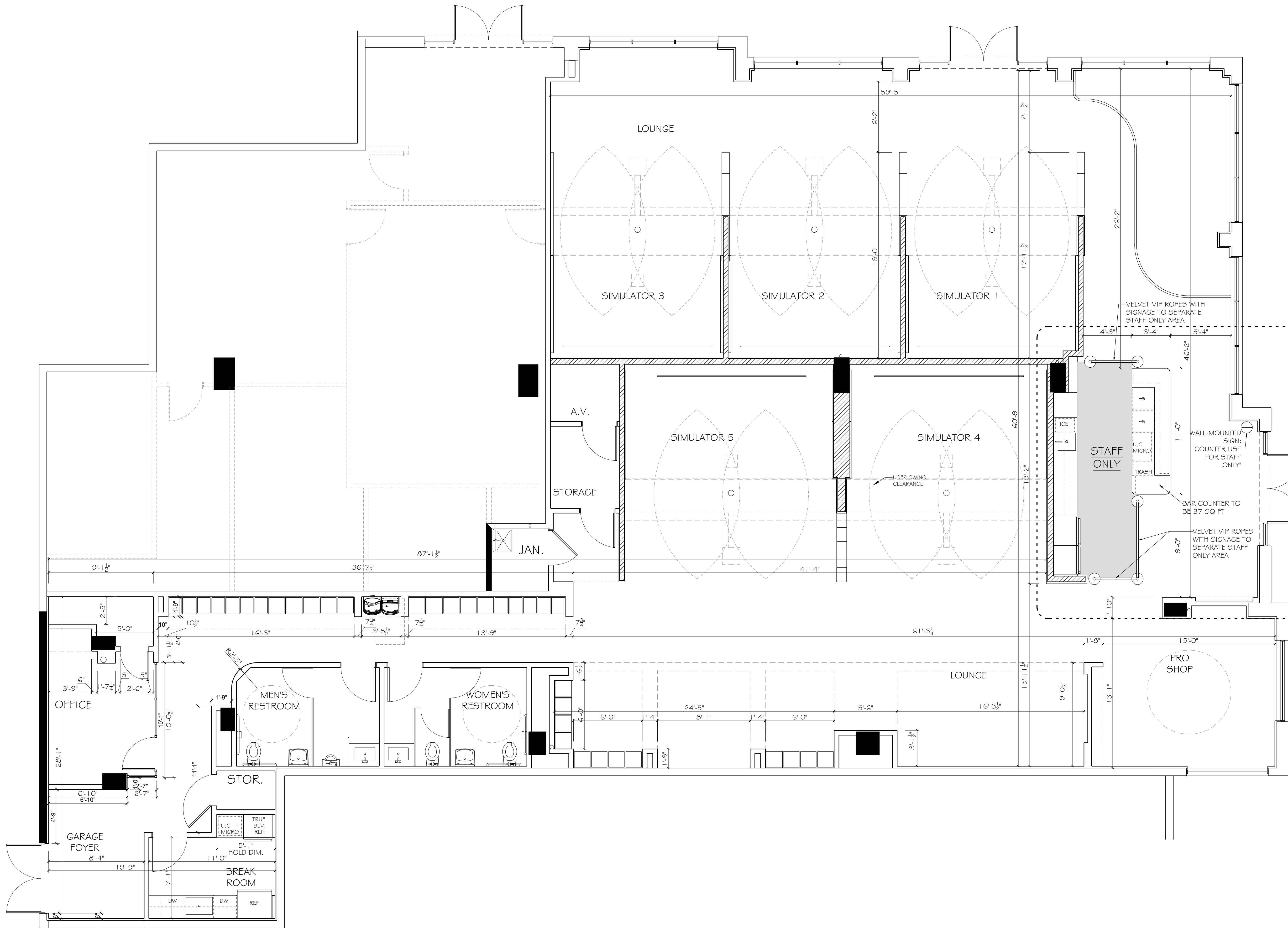
NC/DO

DRAWING TITLE:

ARCH.  
FURNITURE  
PLAN

SHEET NO.

ID-1



THIS AREA IS PROPOSED TO BE A  
STAFF-MONITORED,  
CONTROLLED-ACCESS SELF-POUR  
STATION, INTEGRATED WITH A  
POINT-OF-SALE INTERFACE INTENDED  
SOLELY FOR USE BY CLUB MEMBERS  
AND THEIR REGISTERED GUESTS  
DURING REGULAR HOURS OF  
OPERATION (8:00 AM TO 9:00 PM,  
SEVEN DAYS A WEEK), CONSISTENT  
WITH THE PARAMETERS OF A 2COP  
LICENSE."

OVERALL AREA: 4,978 SQ FT GROSS  
BAR COUNTER AREA: 37 SQ FT