

Granada Blvd Sidewalk Improvements Update

AUGUST 26, 2025

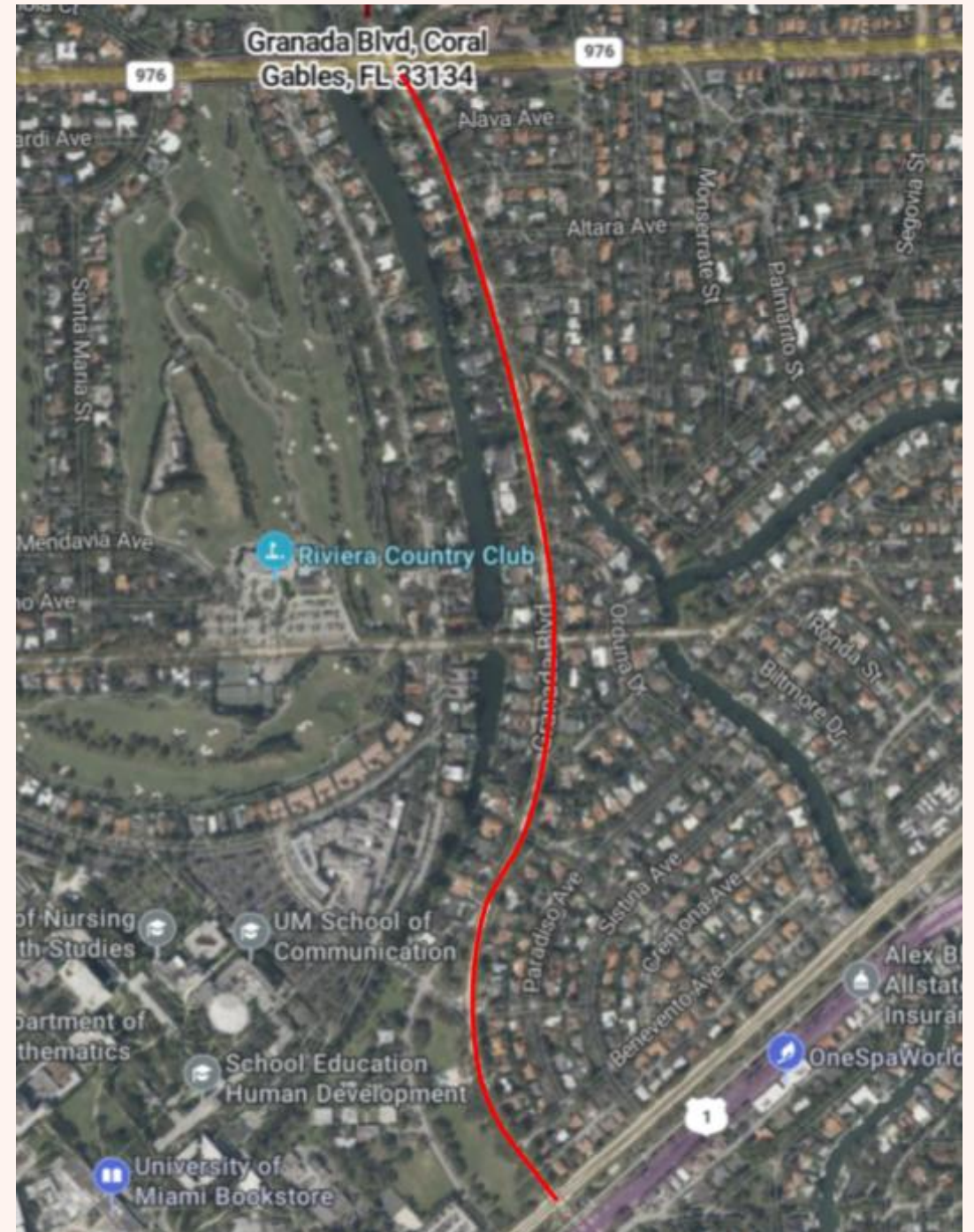
CORAL
GABLES
THE CITY BEAUTIFUL



PHASE I

- **Sidewalk Project - Granada Blvd from Bird Road to Ponce de Leon Blvd**
- **Project Length: 2.2 miles**
- **Mobility Impact Fees Funding (Preliminarily approved by MDC)**
- **1.95-million-dollar project**
- **Design – Fall 2025**
- **Construction – Fall 2026**

****Funding subject to final MDC approval**

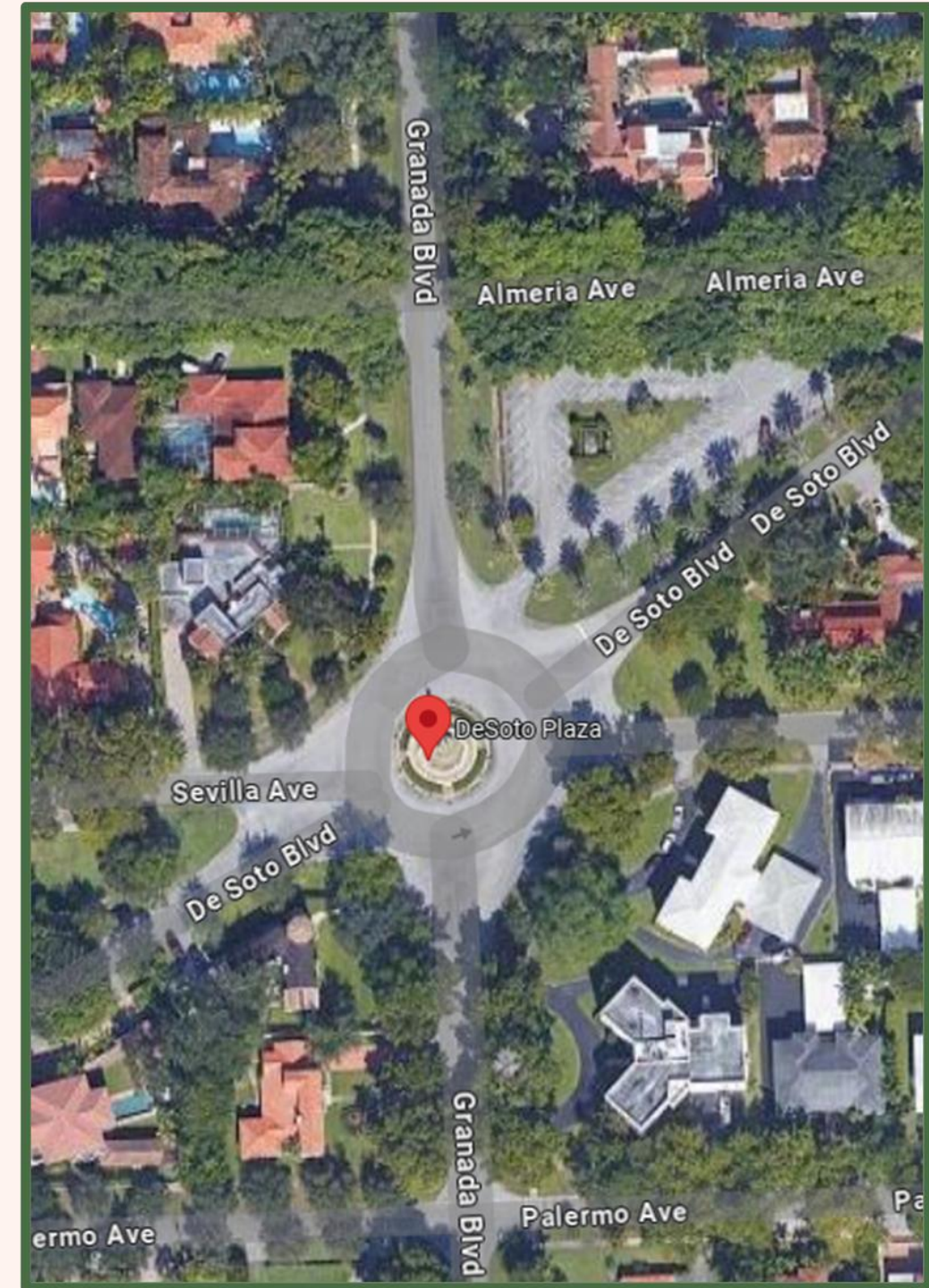


PHASE II

2

2

- **Roundabout Project – De Soto Fountain**
- **FDOT LAP Funding**
- **2.46-million-dollar project**
 - **LAP funding - \$1 million for construction only**
- **Design – Fall 2025**
- **Construction – Early 2027**



Existing Conditions

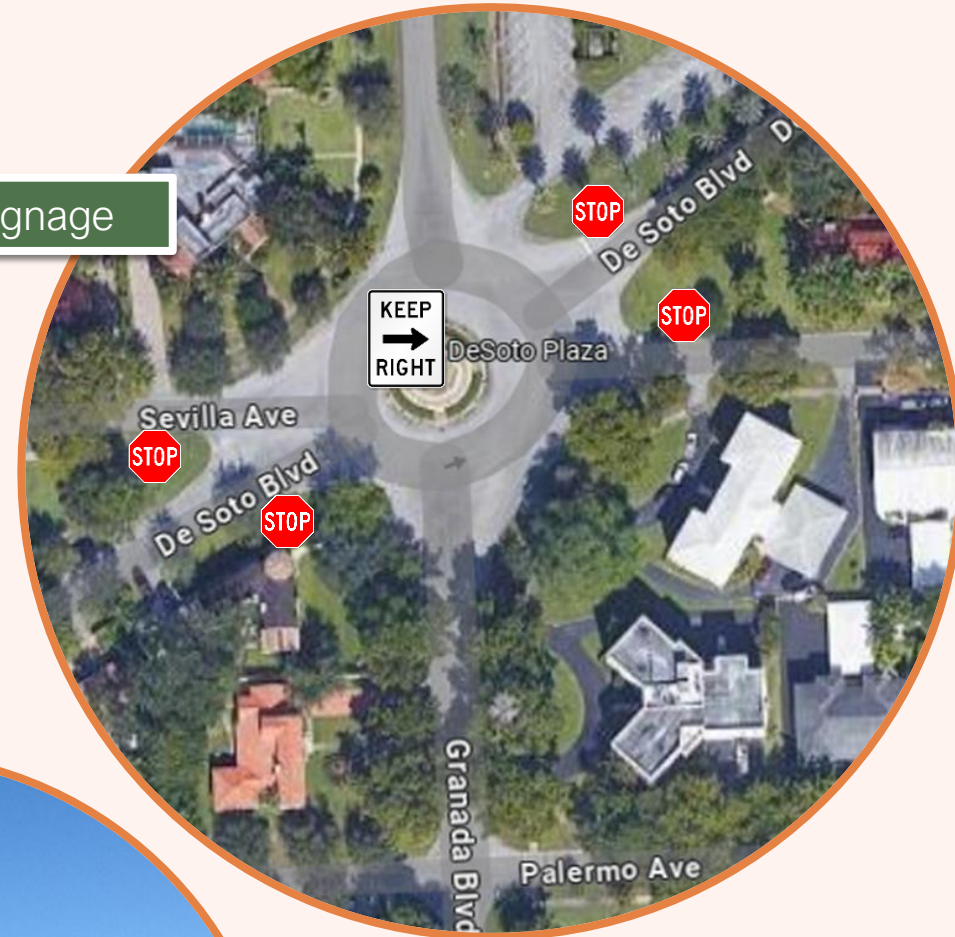
2

2

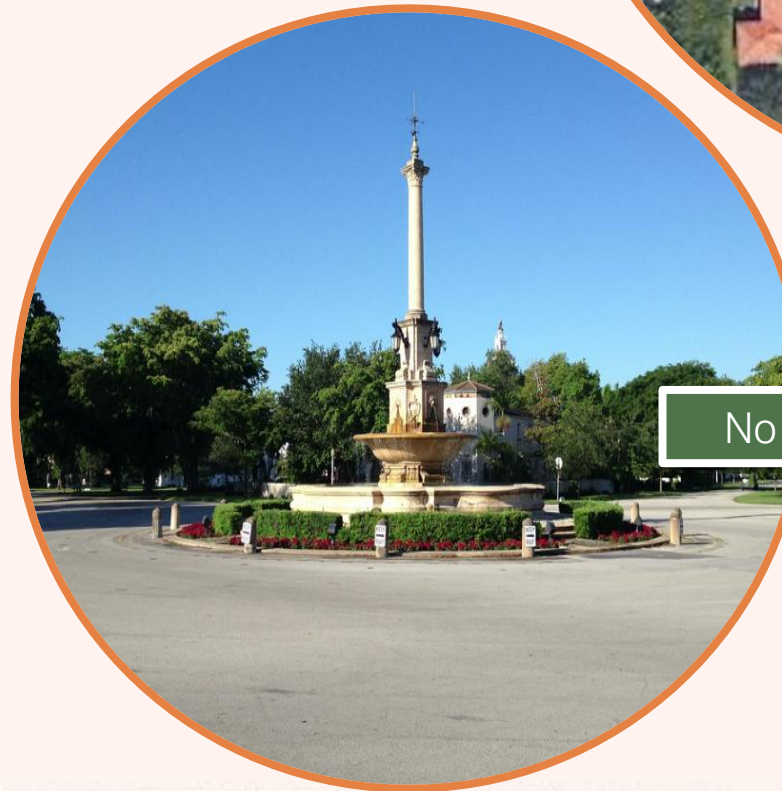


Excess Asphalt Pavement

Lack of Signage



Lack of Pavement Markings

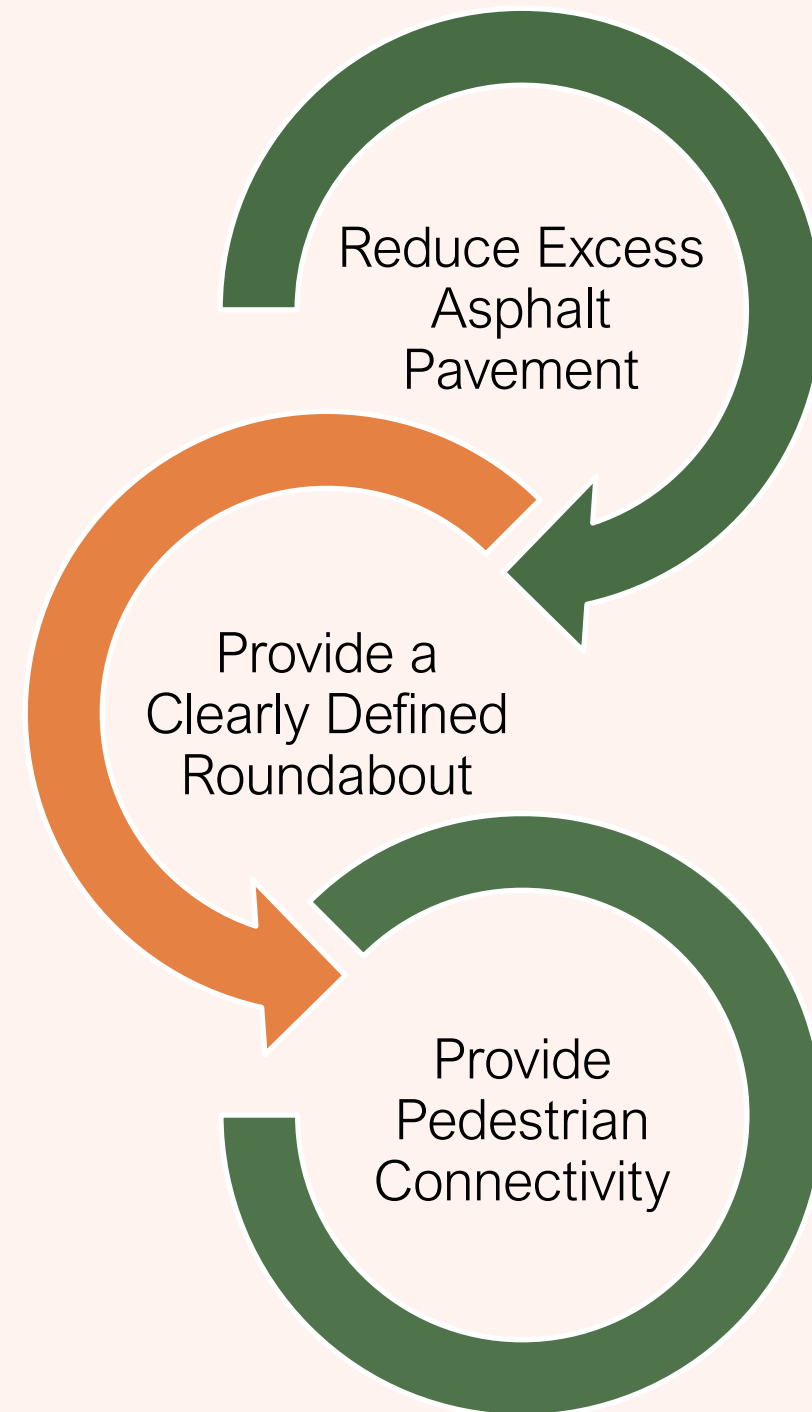


No Pedestrian Connectivity

SCOPE

Engineering Design Services and Construction of a Roundabout at the intersection of De Soto Blvd, Granada Blvd, and Sevilla Ave to include:

- Milling & Resurfacing
- Signing & Pavement Markings
- Sidewalk & Curb Ramp Installation
- Drainage
- Landscape
- Lighting



Conceptual Design

2

2

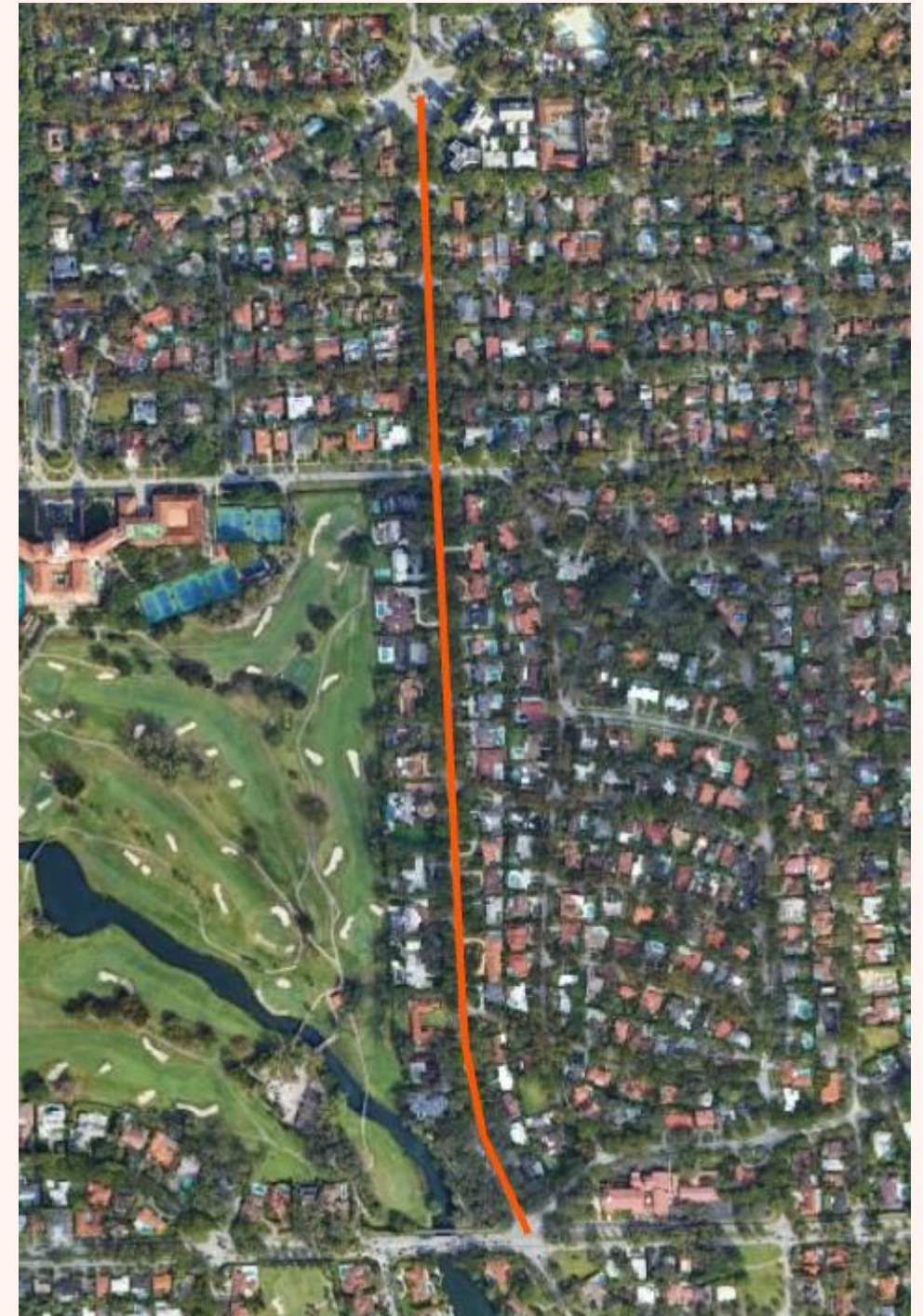


PHASE III

2

2

- **Sidewalk Project - Granada Blvd from De Soto Fountain to Bird Rd**
- **Project Length: 1.23 miles**
- **Transportation Alternatives Program Funding**
- **1.3-million-dollar project**
 - **Design, Construction and CEI**
 - **Approximately \$950,000 Federal Funds**
- **Design – Summer 2026**
- **Construction – Fall 2029**



Sidewalk Map

2

2

Phase I

- **Design – Fall 2025
- **Construction Fall 2026

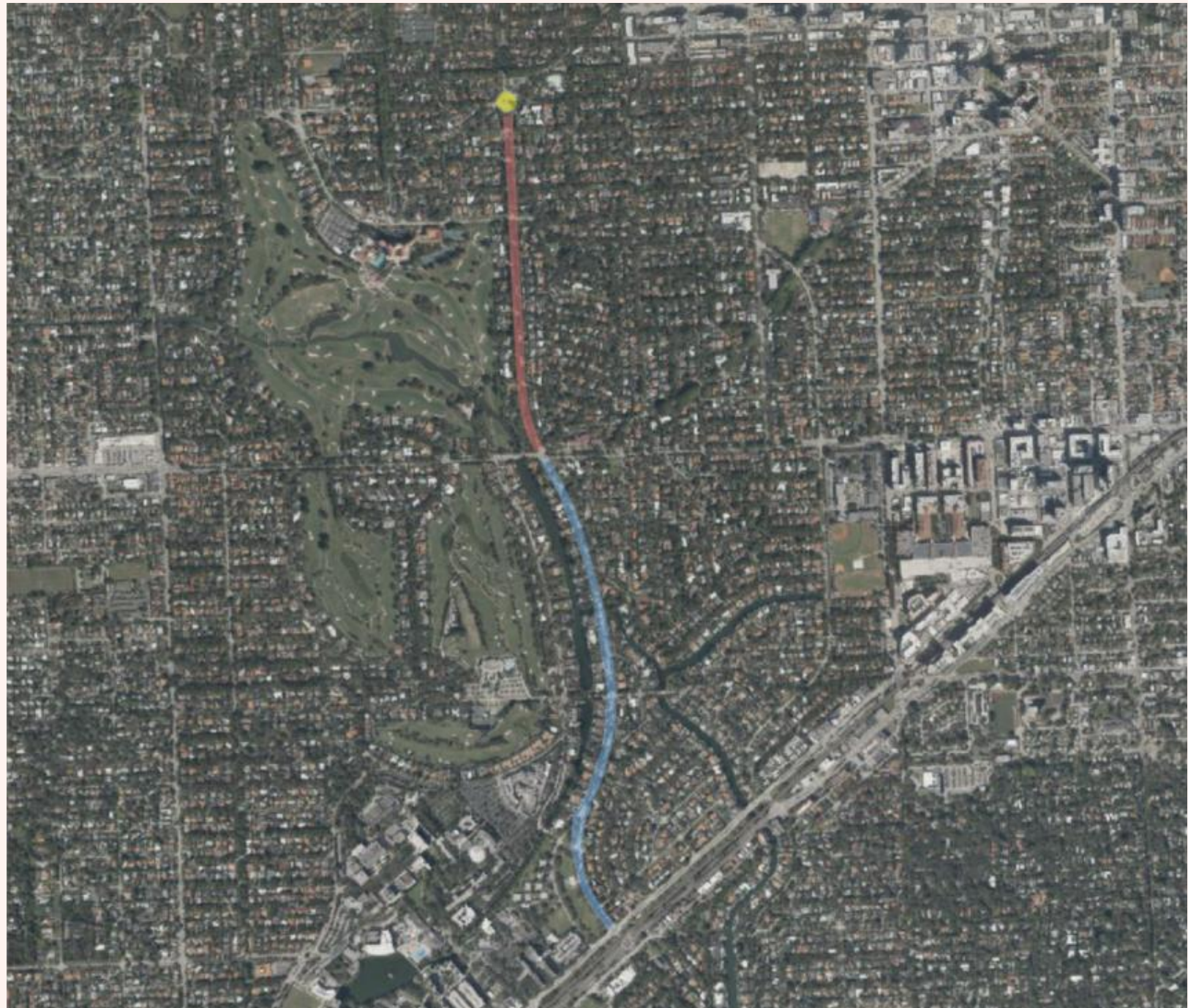
Phase II

- Design – Fall 2025
- Construction – Early 2027

Phase III

- Design – Summer 2026
- Construction – Fall 2029

****Funding subject to final MDC approval**



A nighttime photograph of a large, ornate fountain in the foreground, illuminated with warm yellow lights. The fountain has a tall, slender column rising from its center. In the background, a large, multi-story building with a prominent tower is visible, also illuminated. The sky is a deep blue with some clouds. Palm trees are visible in the upper corners of the frame. The text "THANK YOU" is overlaid in a large, white, serif font across the center of the image.

THANK YOU