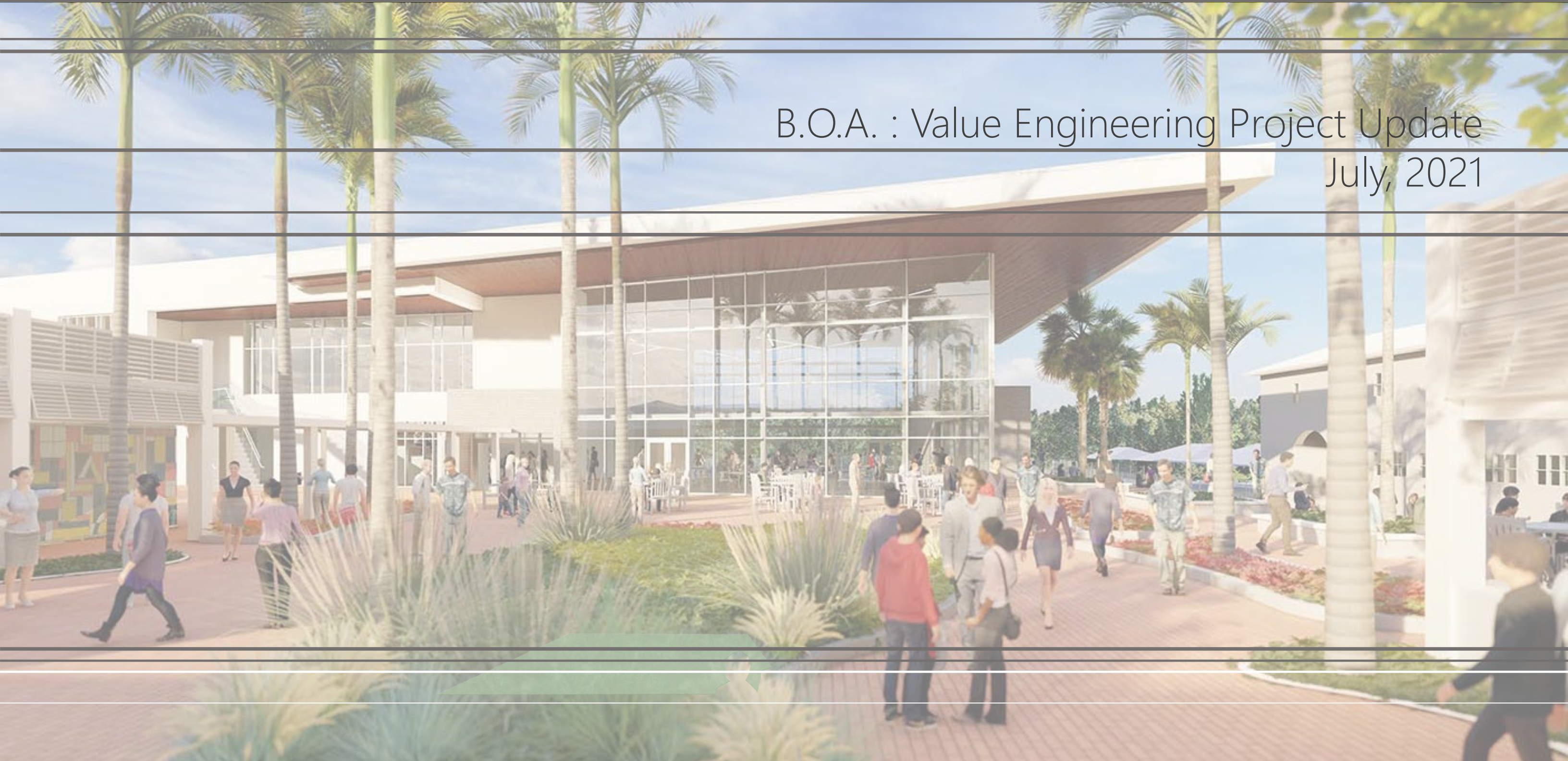


GULLIVER ACADEMY

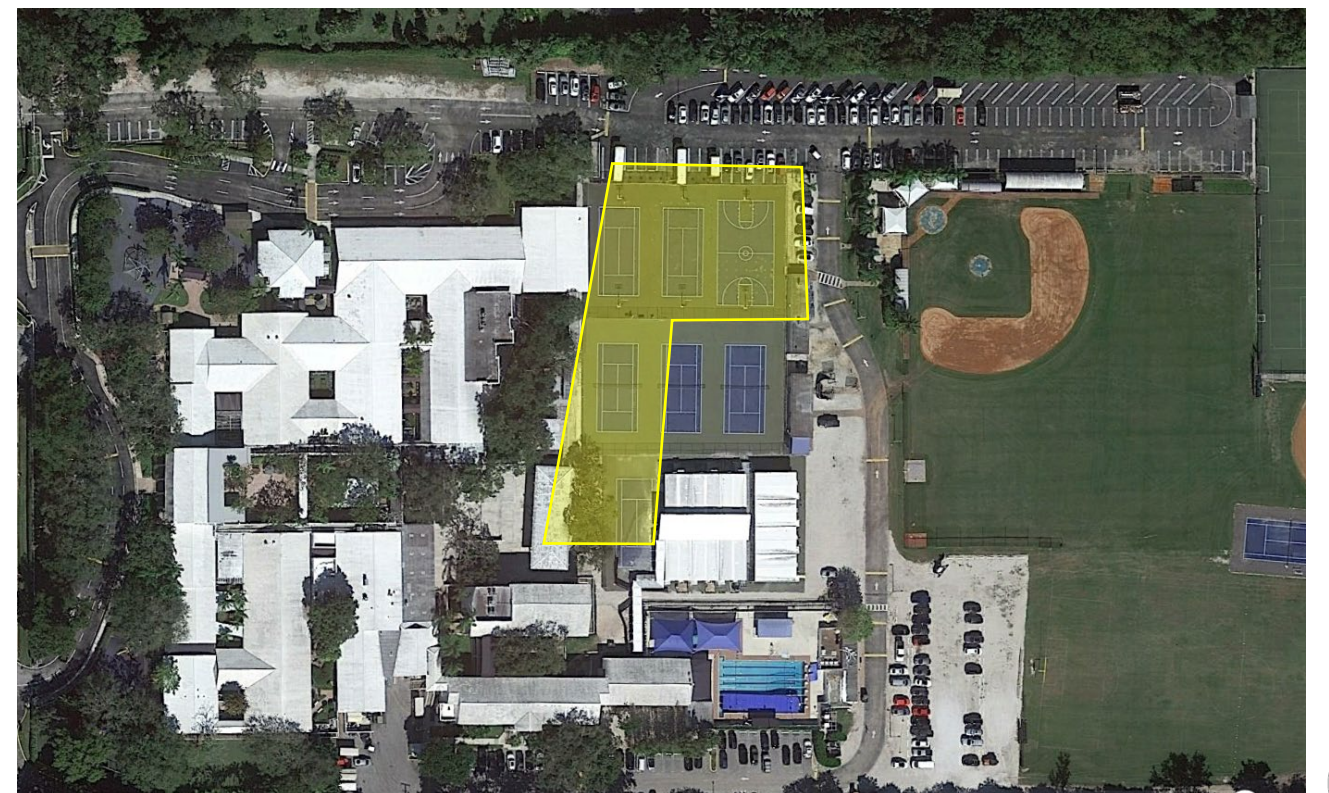
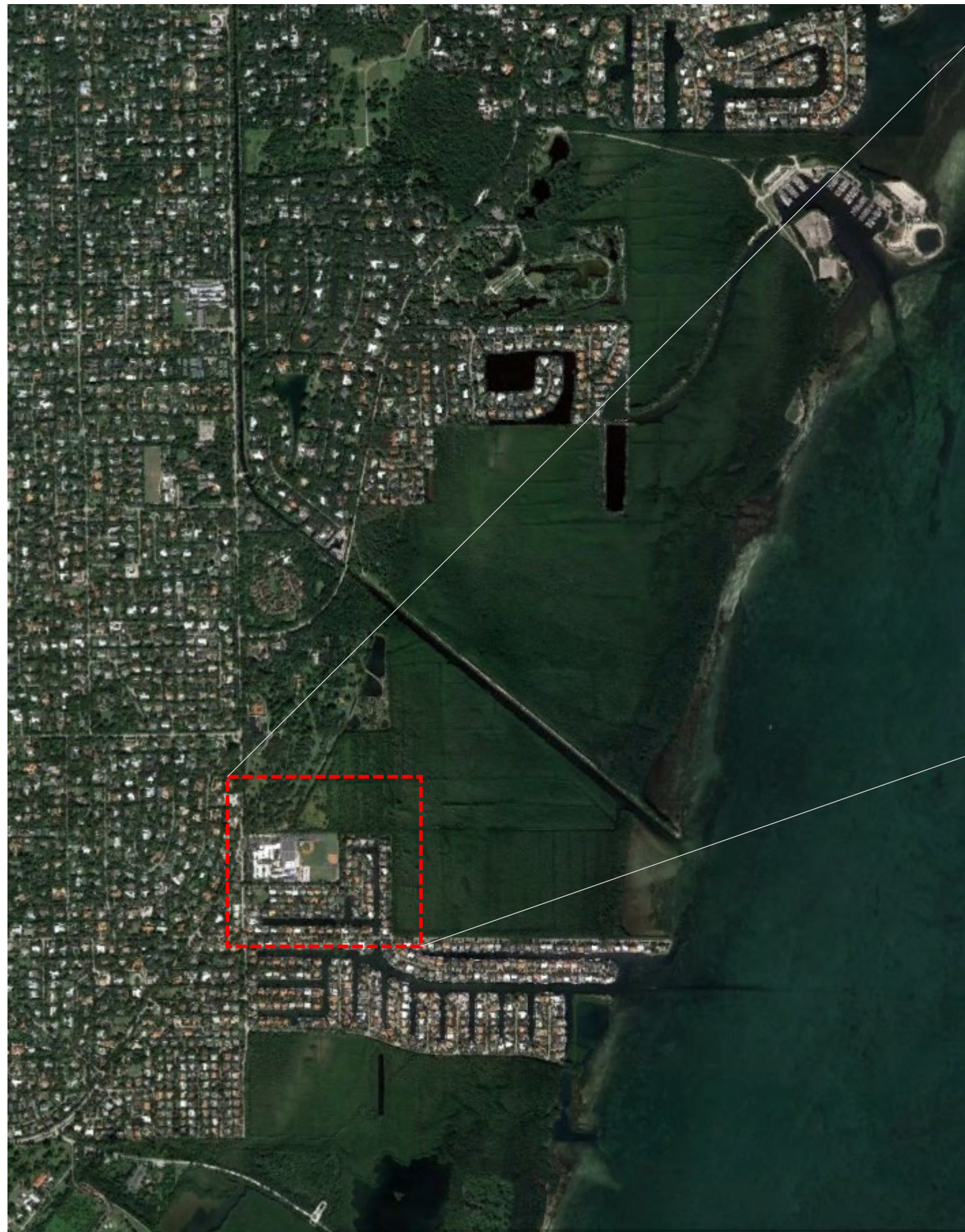
Gymnatorium/ Collaboratorium



B.O.A. : Value Engineering Project Update
July, 2021

Project Recap

Project Location



Conceptual Rendering Looking East



Conceptual Renderings Looking West



Conceptual Rendering Dining and Tennis Complex



Conceptual Rendering Main Entry



Conceptual Rendering Extended Courtyard



Progress Photos



An aerial architectural rendering of a school campus. The main building is a long, two-story structure with a white roof and large windows. To the left is a swimming pool with a diving board. In the center are several tennis courts. The campus is surrounded by palm trees and a parking lot with several cars. The text "OWNER SELECTED VALUE ENGINEERING ITEMS" is overlaid in the center.

OWNER SELECTED VALUE ENGINEERING ITEMS

East Elevation



- Delete aluminum fixed sunshades
- Eliminate horizontal stucco score lines
- Eliminate top portion of spandrel glass and replace with cmu/stucco

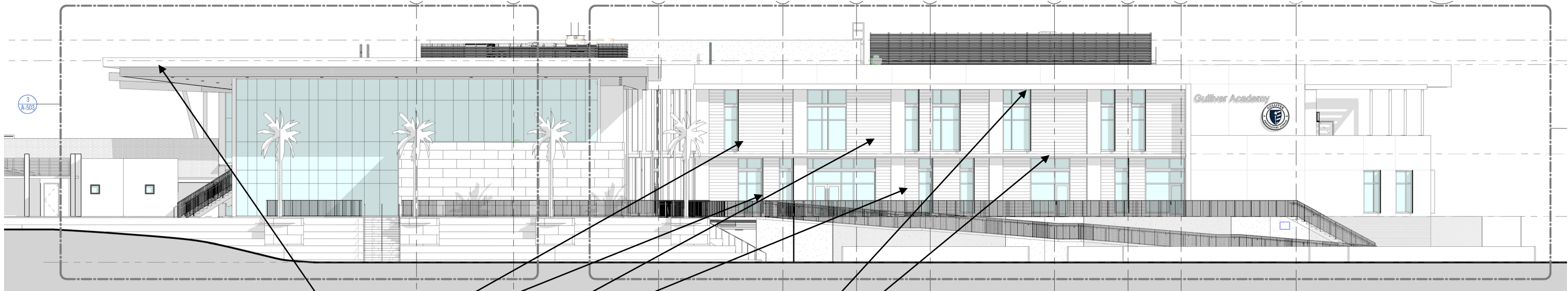


BEFORE



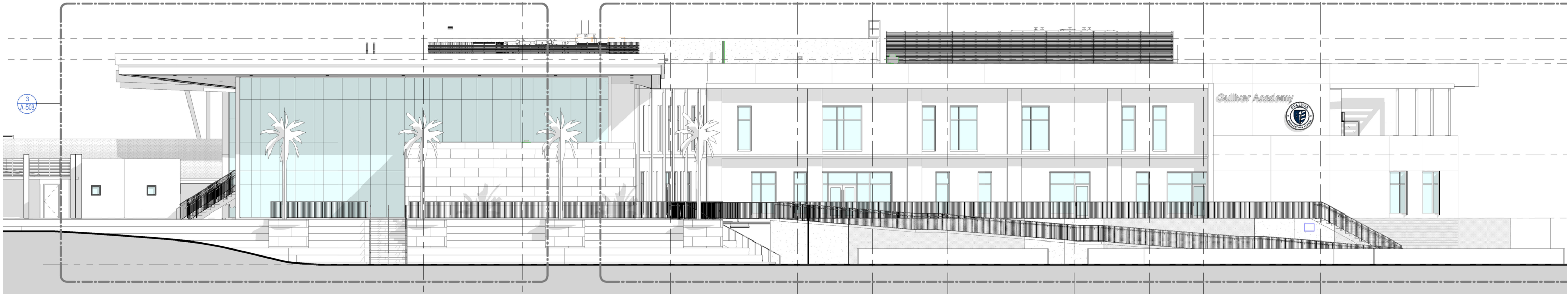
AFTER

South Elevation



- Reduce roof overhang by 3'-4"
- Delete aluminum fixed sunshades
- Eliminate horizontal stucco score lines
- Eliminate top portion of spandrel glass and replace with cmu/stucco

BEFORE

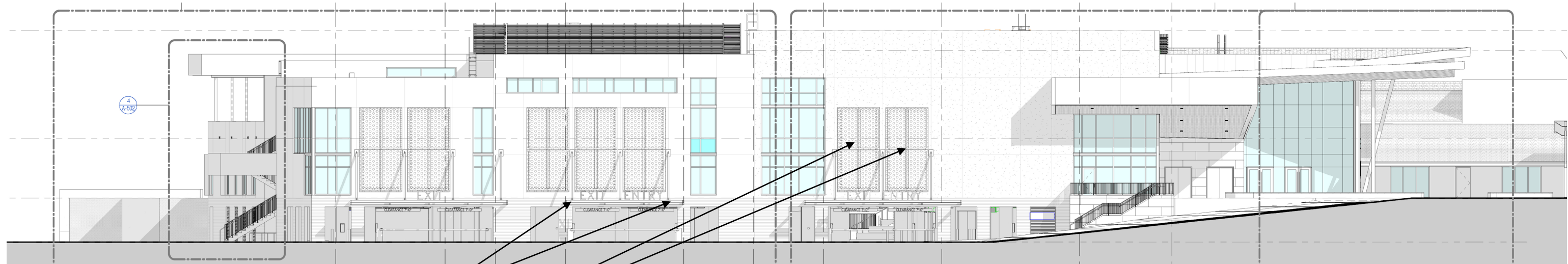


AFTER

Conceptual Renderings



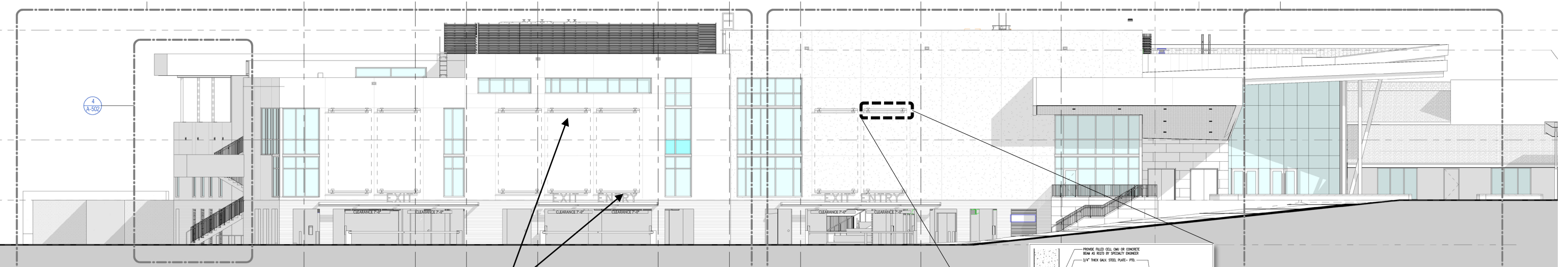
North Elevation



Reduce garage entrance canopies to 5' projections & remove diagonal bracing

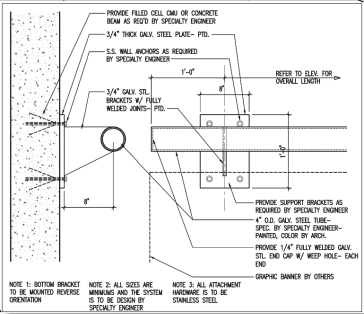
Delete perforated metal panels

BEFORE



New stainless steel art banner support system

AFTER



Detail

Conceptual Renderings: North elevation revisions

Before



After



Conceptual Renderings



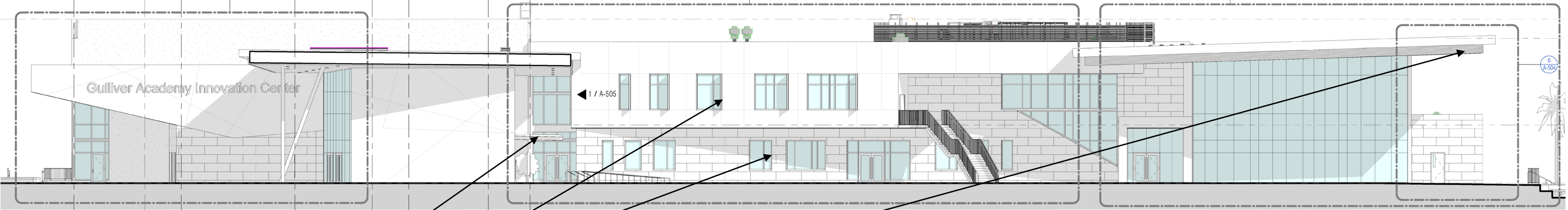
Aerial View for context and adjacencies



Aerial View for context and adjacencies



West Elevation



BEFORE

- Delete glass canopy at south lobby
- Delete aluminum fixed sunshades
- Reduce roof overhang by 3'-4'



AFTER

Conceptual Renderings



Conceptual Renderings

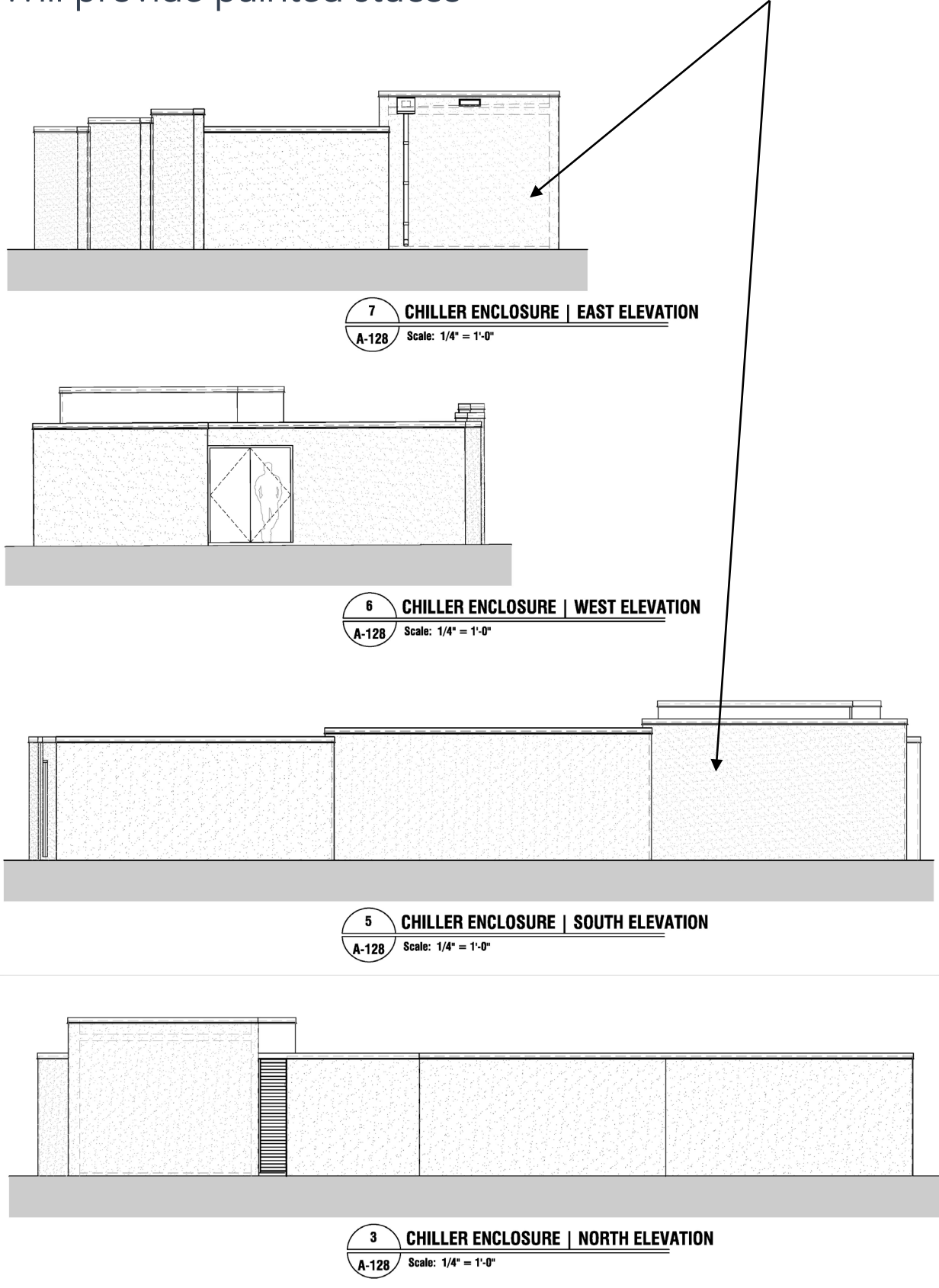
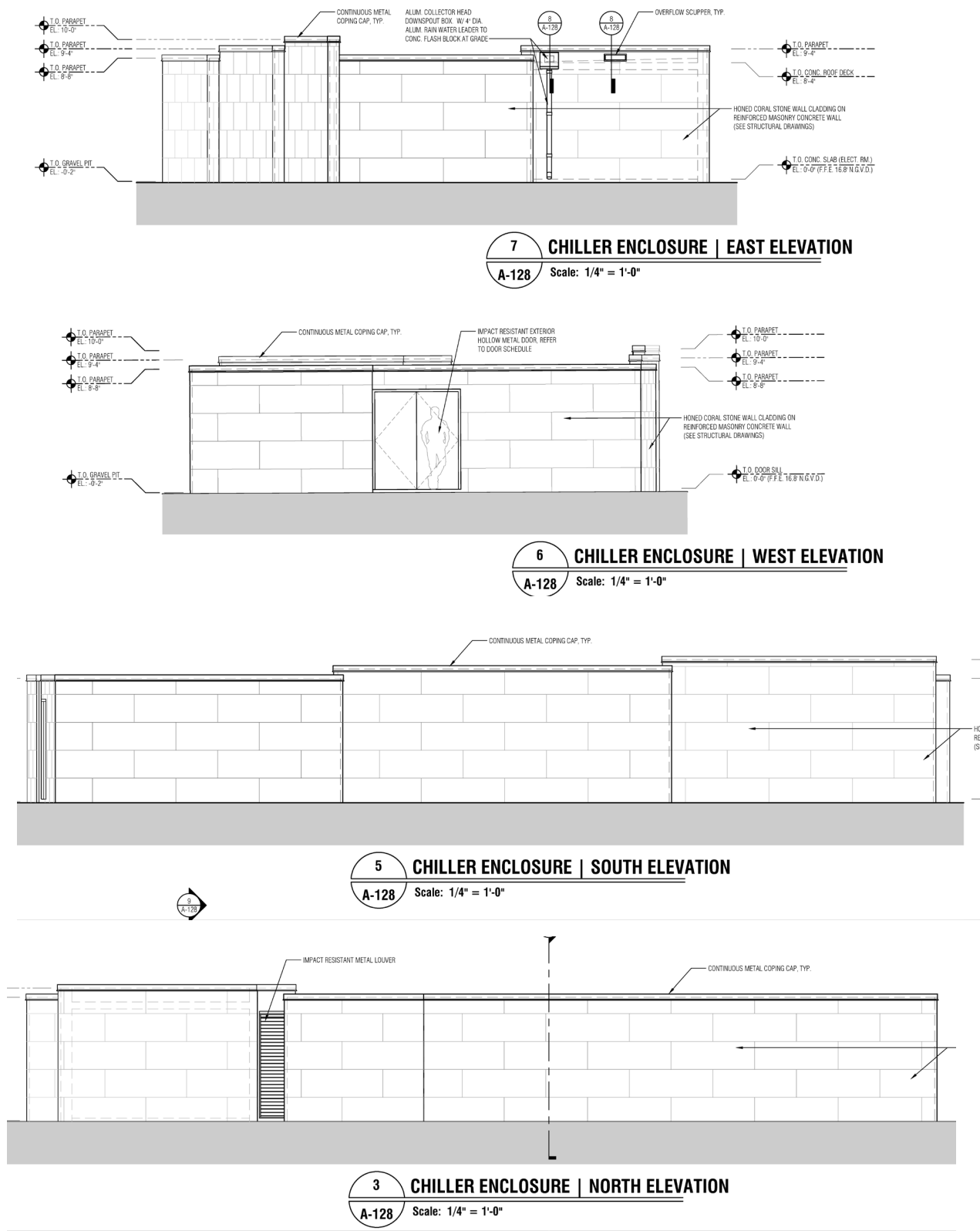


Conceptual Renderings



Chiller Plant

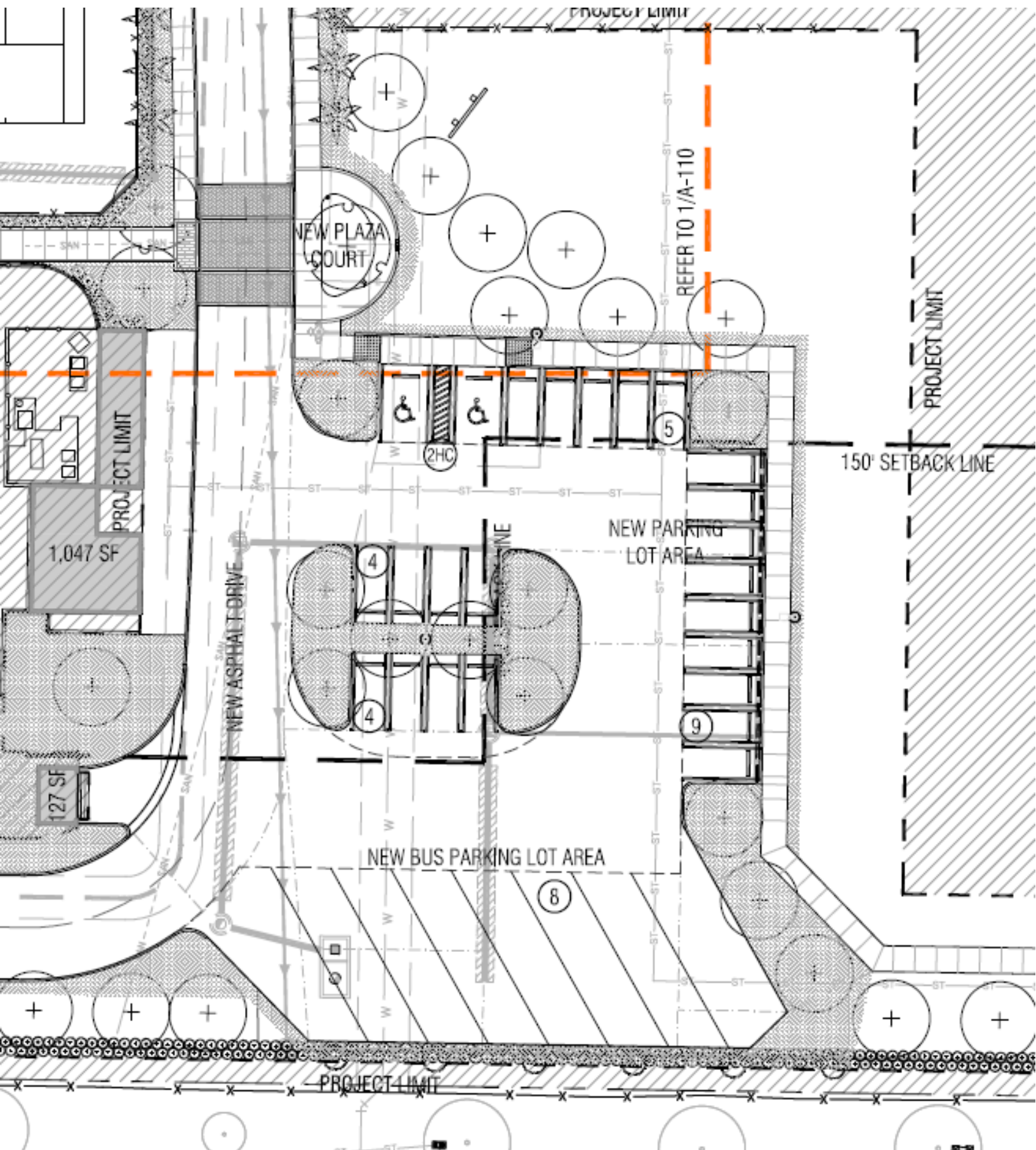
Removed stone cladding from exterior of Chiller Plant,
Will provide painted stucco



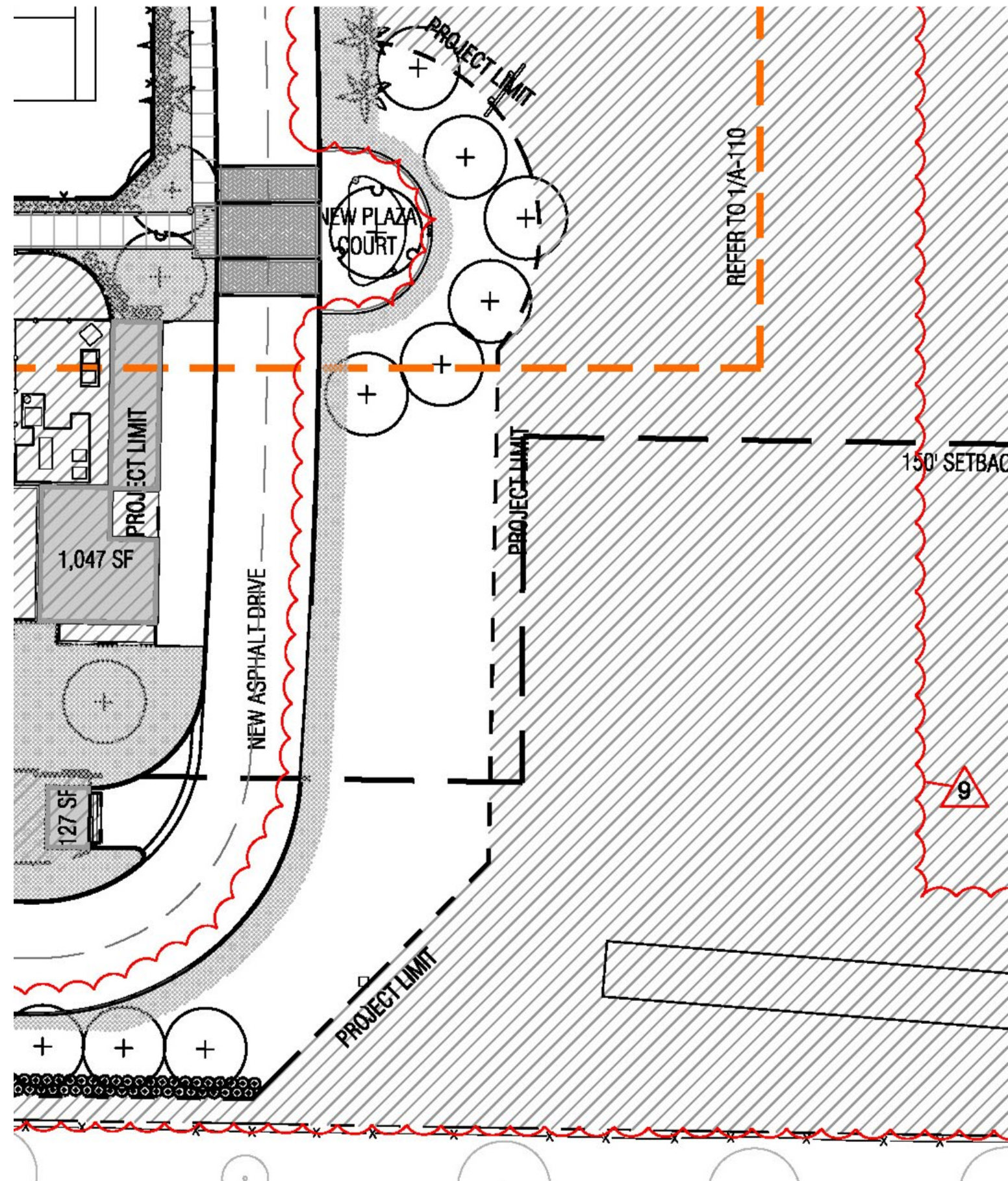
Conceptual Rendering – Stucco in lieu of stone cladding at Chiller plant



Defer S.E. extra parking lot for later date – not needed per Code



BEFORE

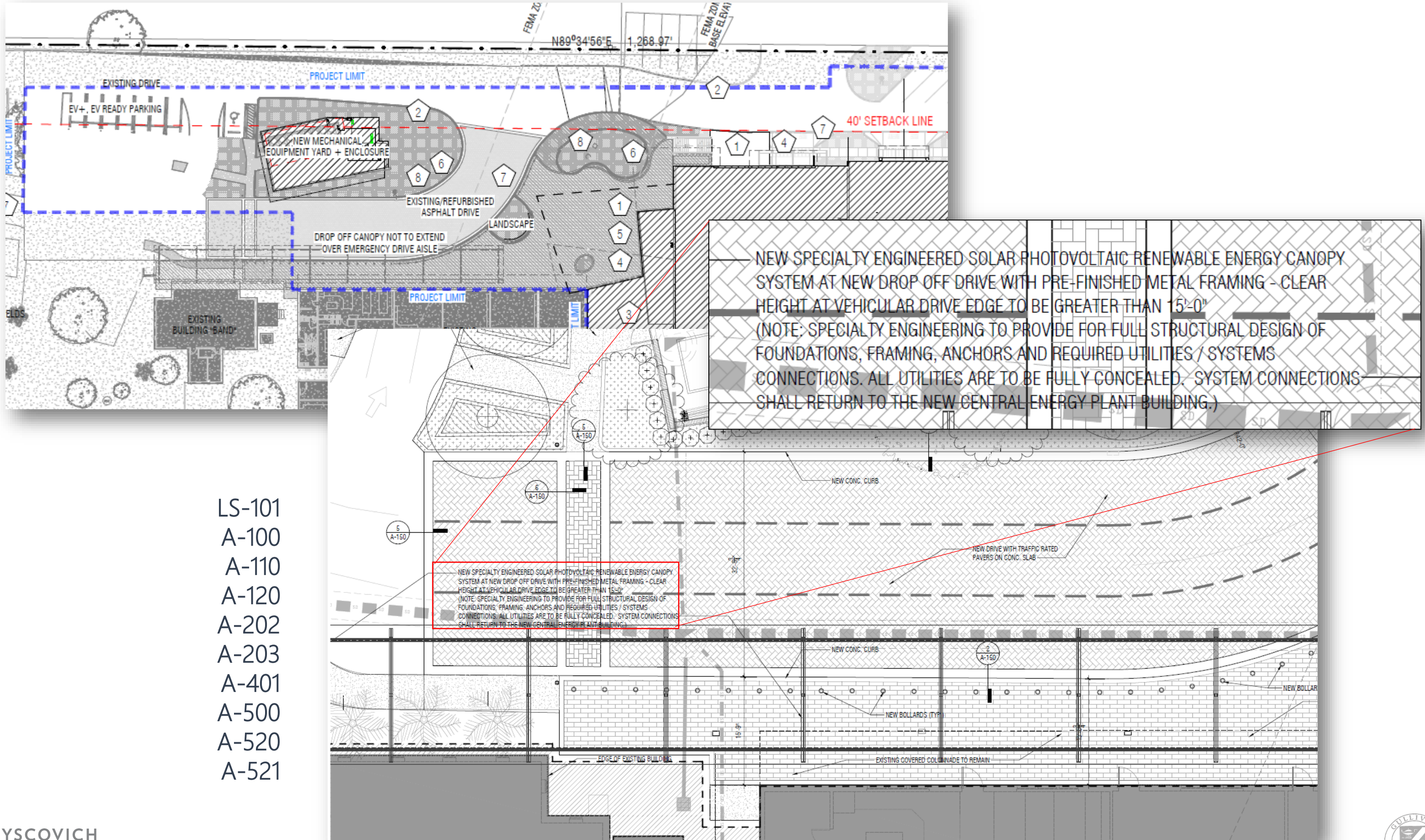


AFTER (CURRENT)

An architectural rendering of a school campus. The main building is a long, two-story structure with a white roof and large windows. In front of the building is a courtyard with several tennis courts. To the left of the courtyard is a swimming pool. The entire area is surrounded by palm trees and other tropical vegetation. A covered walkway with solar panels is visible on the roof of the building. The text "Covered Walkway with Solar Panels" is overlaid on the image.

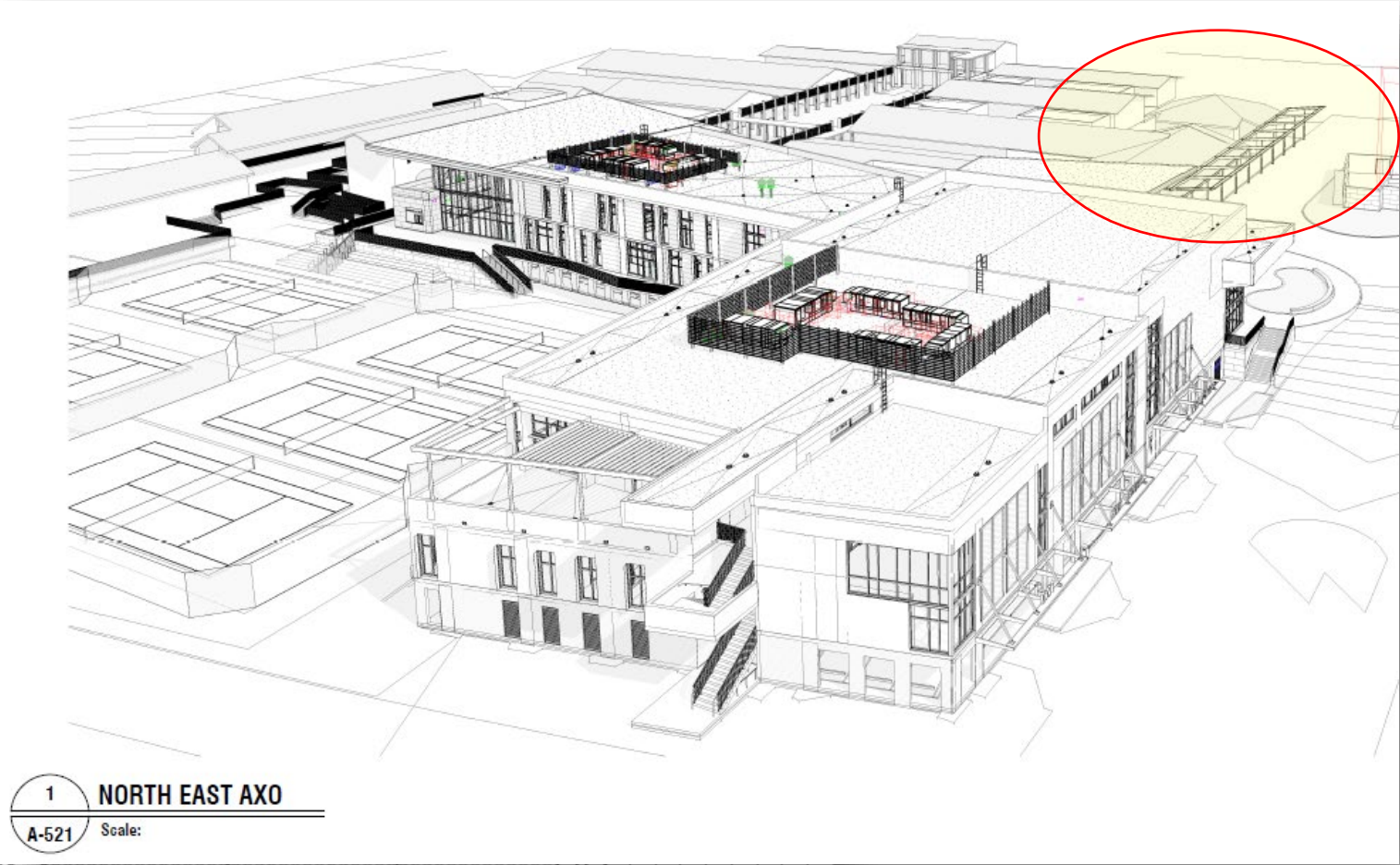
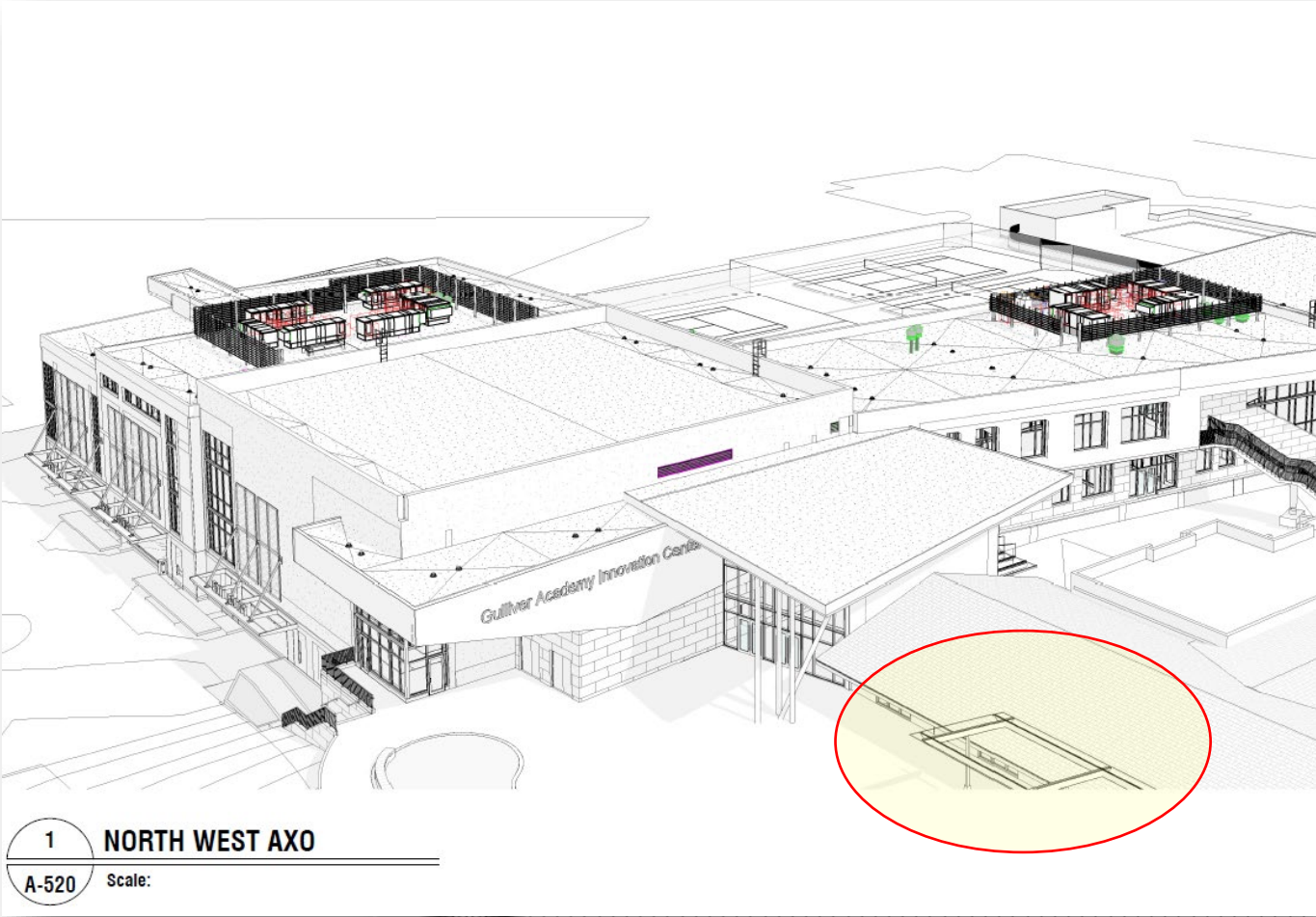
Covered Walkway with Solar Panels

Covered Walkway w/ Solar Panels at Drop Off

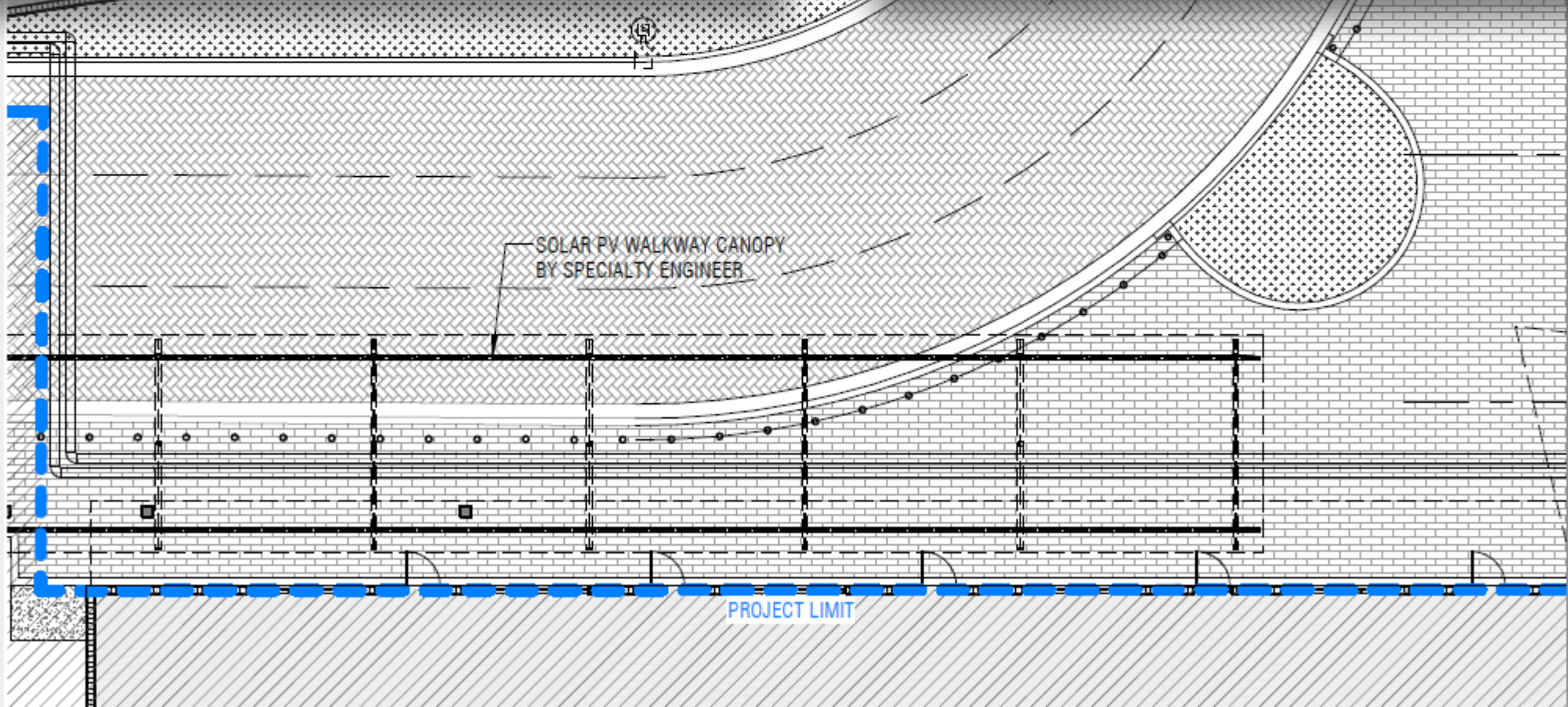


LS-101
A-100
A-110
A-120
A-202
A-203
A-401
A-500
A-520
A-521

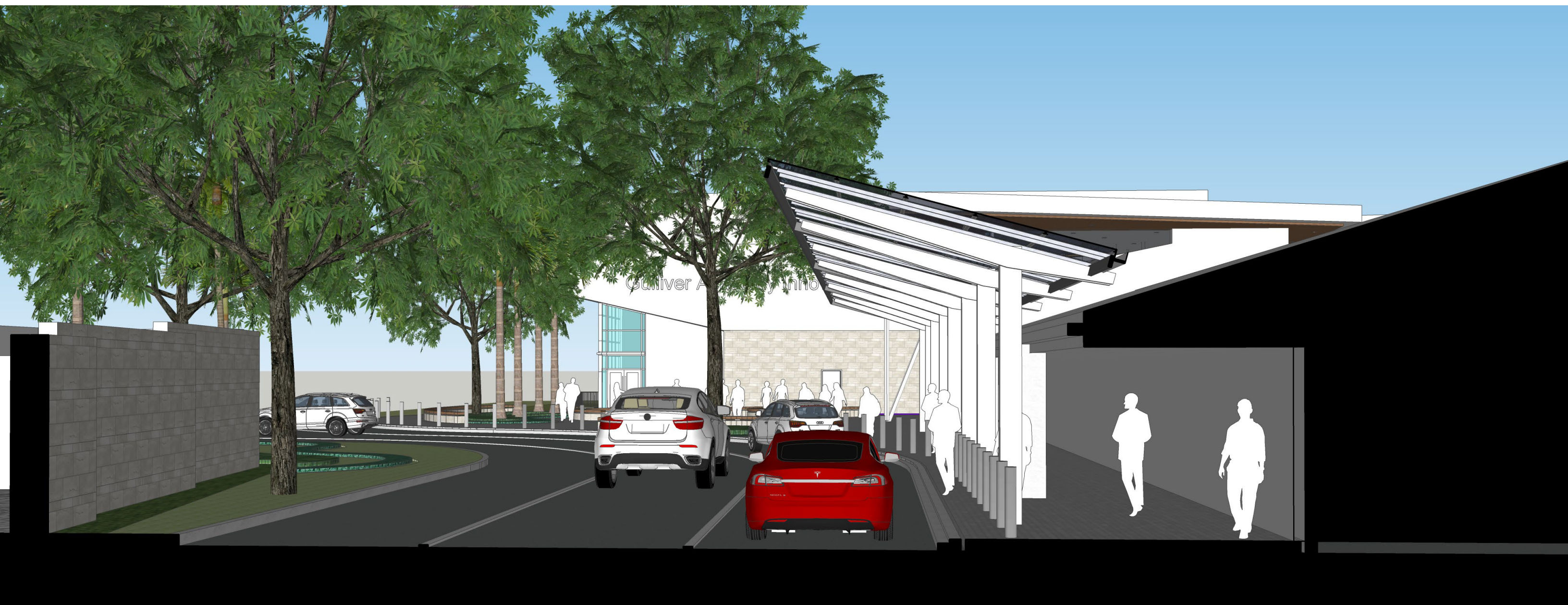
Solar Covered Walkway at Drop Off

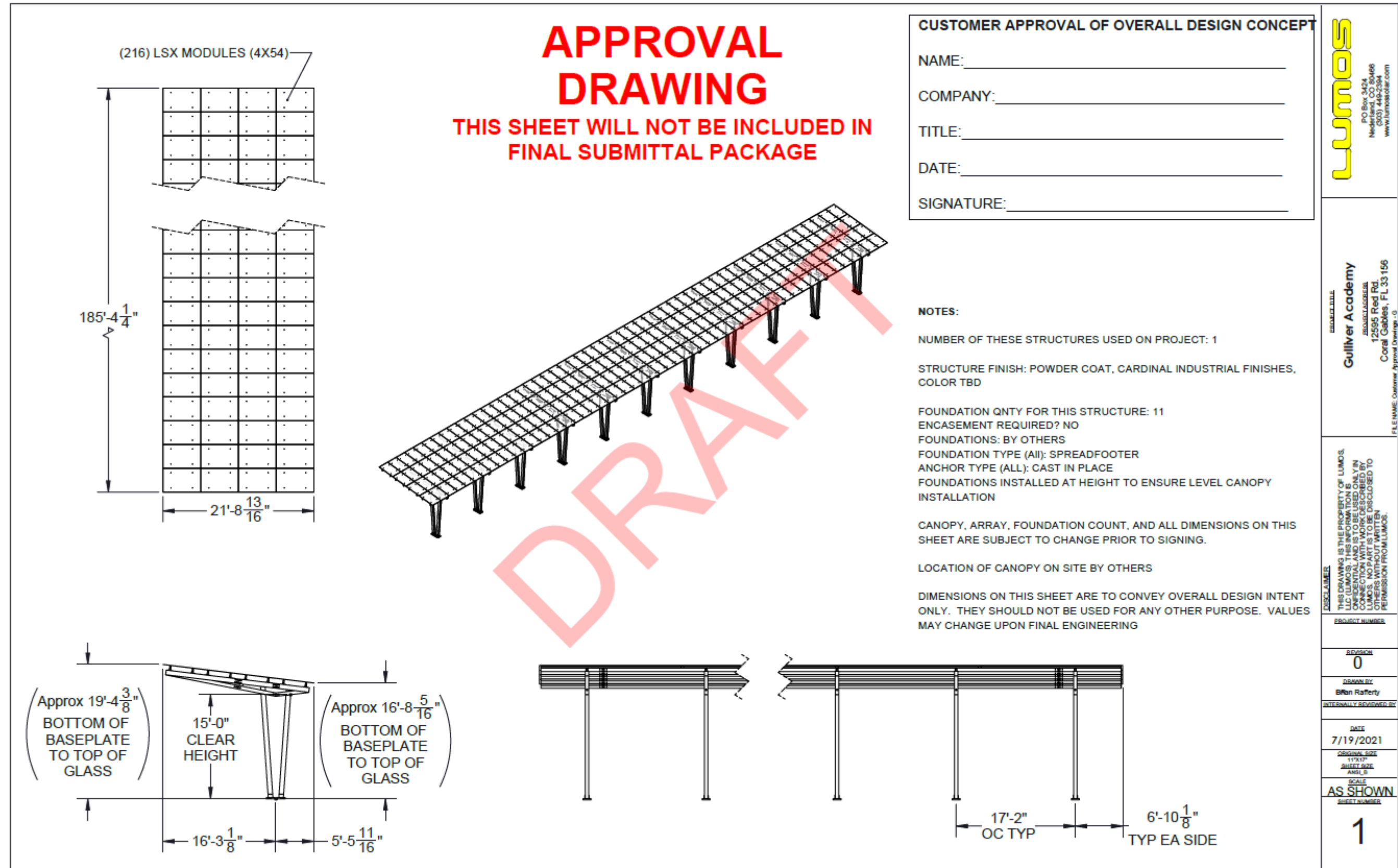


- LS-101
- A-100
- A-110
- A-120
- A-202
- A-203
- A-401
- A-500
- A-520
- A-521



Design Intent/ Massing





Lumos Solar Scapes Modern



Product Overview

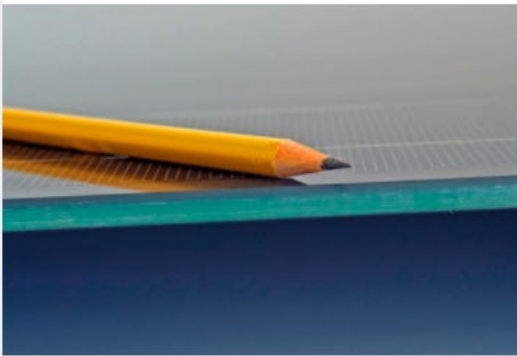
SolarScapes are the solution to the most demanding solar mounting structure problems. **SolarScapes** are modular, pre-fabricated structures made from machined, welded and powder coated aluminum or steel, depending on your project requirements for **maximum durability** and ease of installation.

Locally sourced right here in Colorado and delivered fresh to your **solar project!**

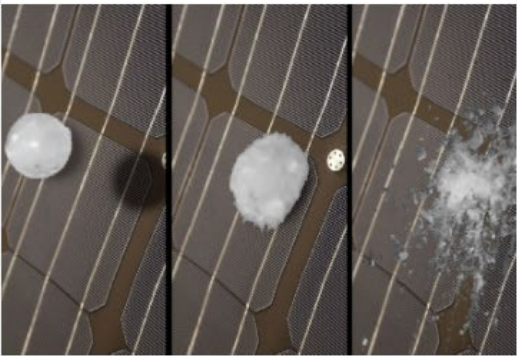
Building on the design that won **Dwell on Design's Best Energy Product in 2012**, **SolarScapes** are infinitely configurable to meet the needs of any project.



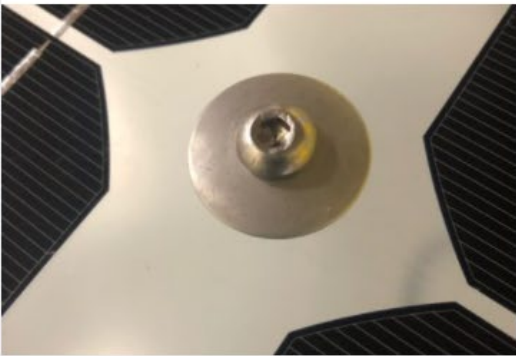
Ultra Low Profile Frameless Module



6mm Thick Tempered Glass



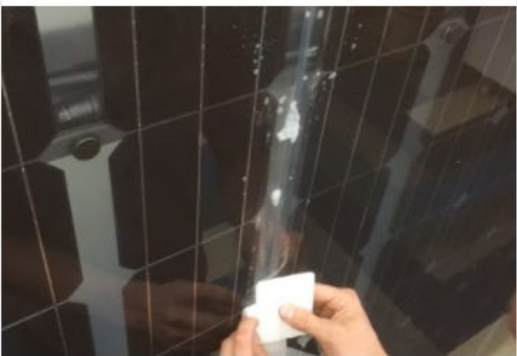
Through-Bolt Mounting Method



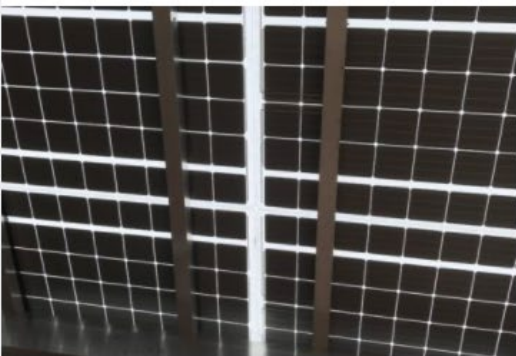
Integrated Wireway



Weatherproofing



Concealed Junction Box and Conductors



LED Lighting



CNC Precision



Conceptual Renderings



Conceptual Renderings



Conceptual Renderings





Thank you