



THE  
**PLAZA**  
CORAL GABLES

## MICHELE OKA DONER

MONUMENTAL RITUAL BENCH AND RADIANT BRONZE COUNTER TABLE TOP





THE  
**PLAZA**  
CORAL GABLES

## **A DESCRIPTION OF THE PROPOSED DEVELOPMENT**

THE PLAZA CORAL GABLES WAS CONCEIVED WITH THE BUSINESS DISTRICT IN MIND, TO ENSURE WE REVITALIZE THIS CITY SECTION WHILE KEEPING THE BEAUTY AND BALANCE OF ITS DESIGN AS A PRIORITY WHILE BRINGING A FULL RANGE OF SERVICES AND OPPORTUNITIES TO THE COMMUNITY, INCLUDING A HIGH-END HOTEL WITH MEETING SPACE FOR BUSINESS AND SOCIAL EVENTS, CLASS “A” OFFICES, STREET-LEVEL SHOPPING AND DINING AREAS, RESIDENTIAL TOWNHOMES AND APARTMENTS. THE NEW DESIGN INCORPORATES AN ALMOST 1 ACRE OPEN TO THE PUBLIC PLAZA FACING PONCE DE LEON BLVD. AND THE SOON-TO-BE-IMPROVED PONCE CIRCLE PARK.

THE PROJECT WAS DESIGNED IN LINE WITH THE LATEST CITY REGULATIONS, RESPECTING AND PRESERVING THE TRADITIONAL AESTHETIC CHARACTER CORAL GABLES IS FAMOUS FOR. THIS UNIQUE PROJECT WAS INSPIRED BY THE IDEA OF DELIVERING MAJOR IMPROVEMENTS IN WHAT WAS, UNTIL NOW, A LONG-ABANDONED AREA. THE PLAZA CORAL GABLES WILL HAVE A POSITIVE IMPACT ON THE QUALITY OF LIFE AND SAFETY OF THE COMMUNITY AS A WHOLE, THROUGH THE CREATION OF NEW SPACES FOR RECREATION AND THE PROMOTION OF ARTISTIC, CULTURAL AND OUTDOOR ACTIVITIES.

## **ARTIST SCOPE OF WORK**

## The Plaza Coral Gables

### Monumental Bench and Radiant Ring by Michele Oka Doner

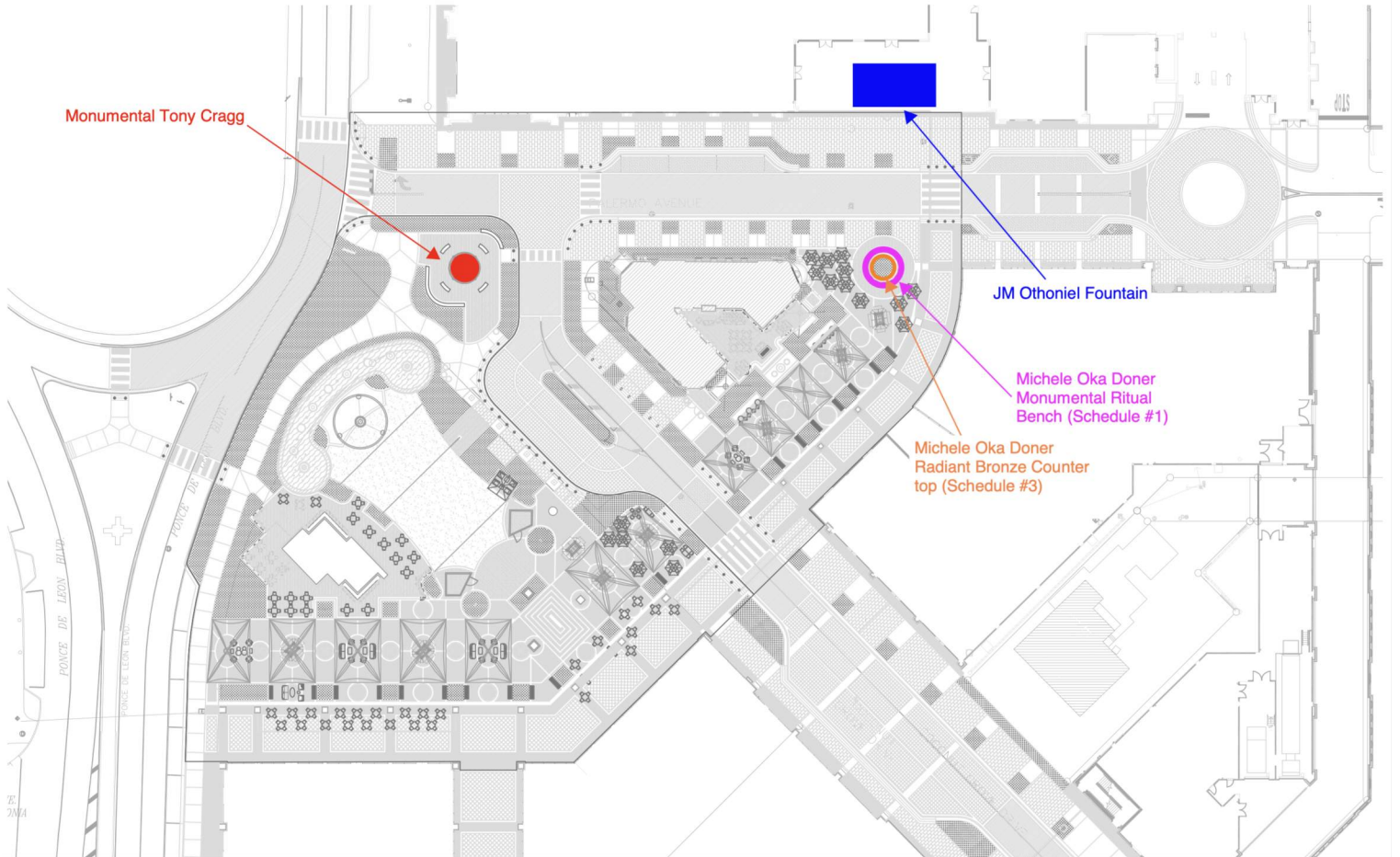
- The proposed Bronze bench and ring table by Michelle Oka-Doner is a unique piece specifically designed for the location at the public plaza area of the project. It is located adjacent to the historic Arts Building and around a specimen Oak tree that will provide a shaded oasis in an exterior pedestrian environment that will stand alone, will be available to the public 24 hours a day and 7 days a week. The Public will be able to see, interact and physically touch the art piece, in the middle of an open-air plaza without interfering with the surrounding seating and operations from the several planned Food & Beverage establishments in the surrounding areas.
- The proposed material is bronze, as it will stand the test of time and will also age naturally and beautifully (see proposed patina and natural/organic pattern proposed for the bench). There are no concerns about comfortable temperature for seating (and table) since the piece will be under shade from the tree canopy as well as the Central Parcel Building to the East and the Historic Arts Building to the West.
- Seating heights and ergonomics are designed for a comfortable seating position for activities that include reading, writing, eating, working on electronics, etc. (see attached diagrams).
- The proposed pricing summary is as follows:
  - Monumental Bench - \$365,000 USD (included Artist fee is \$95,000 -approx 35% of costs)
  - Bronze counter/table ring - \$271,000 USD (included Artist fee is \$95,000 -approx 35% of costs)
  - Grand Total \$ \$636,000 USD
- The cast bronze Monumental Bench, with its adjoining bronze Radiant Bronze Counter Table-Top, imposing works of art, will add respite from worldly pace and many moments of pleasurable transition and reflection for all ages to enjoy at Plaza Coral Gables. Their circular forms promote community, speaking the language of and reflecting the goals established by Founding Father George Merrick when he designed the wonderful city that became Coral Gables.





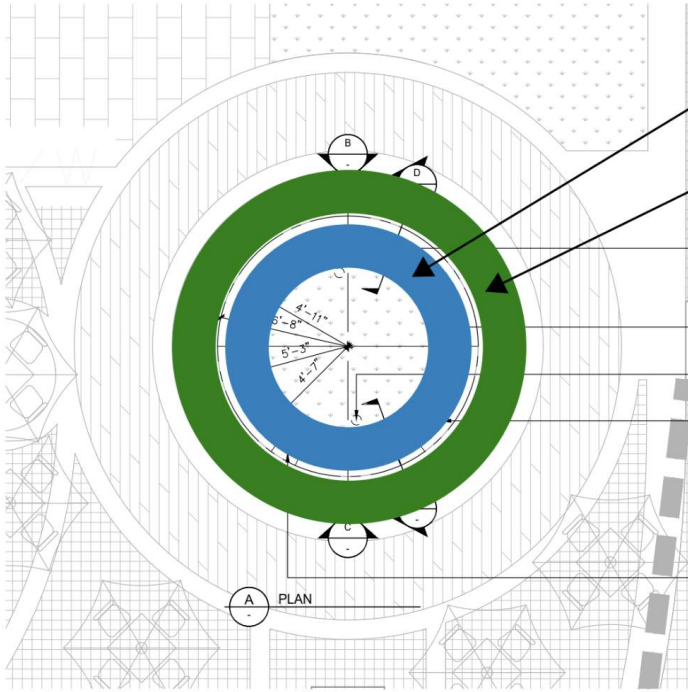
THE  
**PLAZA**  
CORAL GABLES

**A SITE PLAN SHOWING THE LOCATION OF THE ARTWORK**



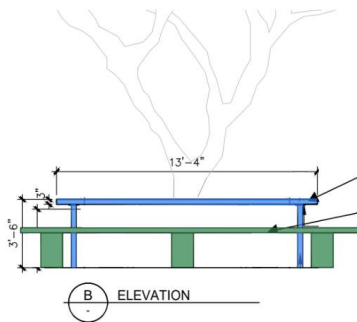


THE  
**PLAZA**  
CORAL GABLES



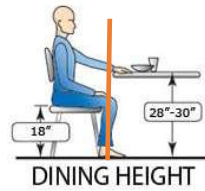
Radiant Bronze Counter

Monumental Ritual Bench



Radiant Bronze Counter

Monumental Ritual Bench



TEL: P. 706.295.3400  
Fax: F. 706.268.3201

CallisonRTKL Project No: 045-140002.00  
Consultant



**LIFESCAPES**  
International Inc  
4930 Campus Drive  
Newport Beach, CA 92660  
Tel: 949.476.8888 Fax: 949.476.8854

*The Plaza Coral Gables*

**PACKAGE 3**

Client/Owner/Project Address  
AGAVE PONCE LLC  
2955 PONCE DE LEON BOULEVARD

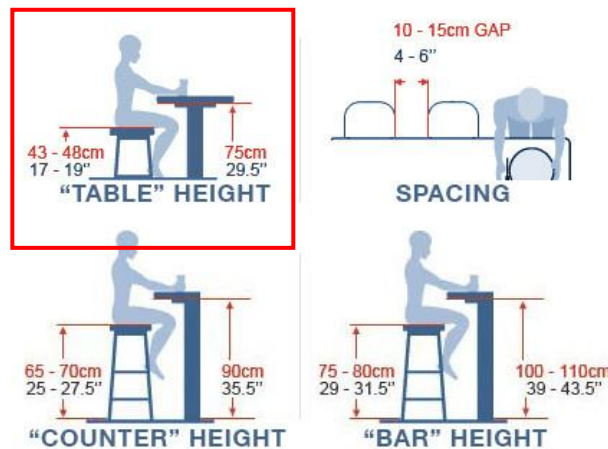
# The Plaza Coral Gables

## Monumental Bench and Radiant Ring by Michele Oka Doner

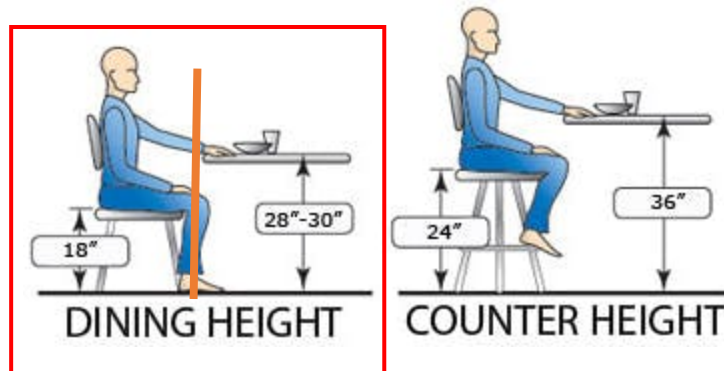
### Sections, Seating arrangement and Heights.

The combination of the Monumental Bench and the Bronze radiant Ring is meant to provide a nice publicly accessible area under the shade of a specimen oak tree (already provided under the area landscape plans), for residents, visitors and the passerby to sit down and enjoy a nice break, eat lunch/snacks/coffee or use as an outdoor work area to set-up a laptop or electronic devices, while in the middle of a pedestrian friendly and quiet area.

Therefore, the heights considered for this project are standard dining table/seating heights that provide easy in and out access as well as comfortable seating/working table positions for longer sessions.

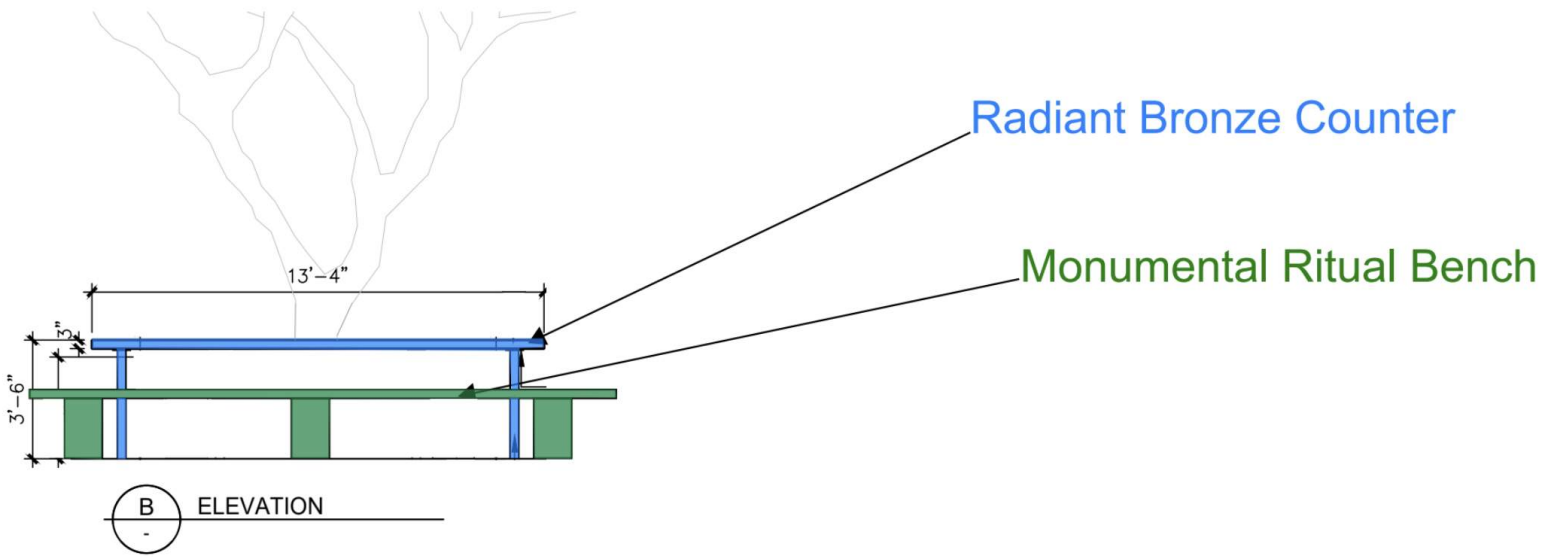


More specifically, and to facilitate access, the bench height will be set at 18" High with the table (Ring) at 30" high to allow for generous legroom (see below). Horizontally the interior edge of the bench (seating) is recommended to be between 0-2" MAX from the outside edge of the table for the best access and comfort (see orange line below).

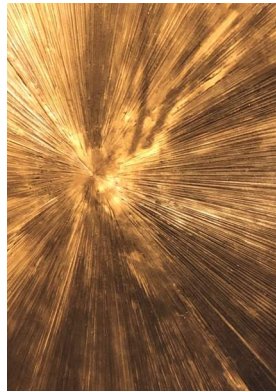




THE  
**PLAZA**  
CORAL GABLES



Monumental Ritual  
Bench texture



Radiant Bronze Counter  
texture



Cupric / Ferric Patina for Ritual  
Bench and Counter applied by hand



## Bronze Bench Patina

“Leafy Green” Patina Tropical Leaf motif based on Coral Gables landscaping



## The Plaza Coral Gables

### Area Revisions & Lanterns for Specimen Oak Tree @ Monumental Bench

By Michele Oka Doner

Upon further review of the Monumental Bench and tabletop radial ring proposed pieces at The Plaza Coral Gables public courtyard, Michele Oka Doner has come up with an additional feature that will work together with the bench and tabletop ring and add visual impact as well as enhance the atmosphere in the area both during daytime as well as evening/night.

Michele is proposing the addition of 6 lanterns that hang from the Specimen Oak Tree based on the organic root pattern seen in the pictures below.

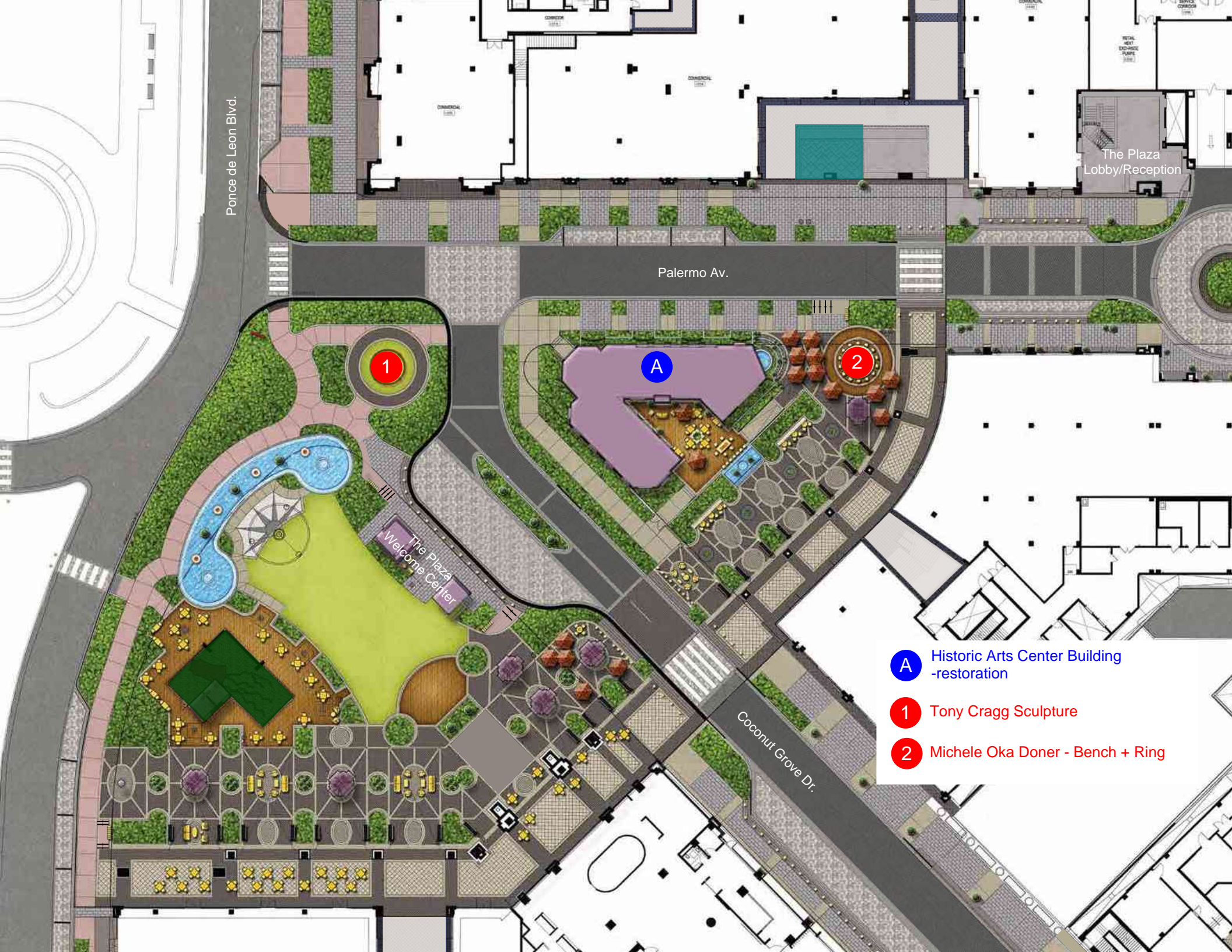


Lantern aprox. size: 22"W x 32" H (ea)



The hanging lanterns would follow the concept from the sculpture but would be fabricated in copper, providing a hollow internal area where the light source will be located. They will have electrical power and internal LED outdoor weather-rated light fixtures.

The cost for the lanterns being proposed is being kept to a minimum in order to not impact the budget as presented. Preliminary assessments are \$6,250 USD for 6 lanterns (copper fixture) plus \$3,000USD of Electrical work/fixtures and a very reasonable \$12,000 USD Design Fee by Doner Studio.



Ponce de Leon Blvd.

Palermo Av.

The Plaza  
Lobby/Reception

The Plaza  
Welcome Center

Coconut Grove Dr.

- A** Historic Arts Center Building -restoration
- 1** Tony Cragg Sculpture
- 2** Michele Oka Doner - Bench + Ring

# REVISED AREA TREATMENT AND PAVING REVISIONS

Michele Oka Doner- March 2020

ENHANCED ACCESS AND  
VISIBILITY TO WATER  
FEATURE BY HISTORIC  
BUILDING

Colored Concrete w/radial finish

Bronze Bench

Bronze Radial Tabletop

6" High Concrete Planter curb

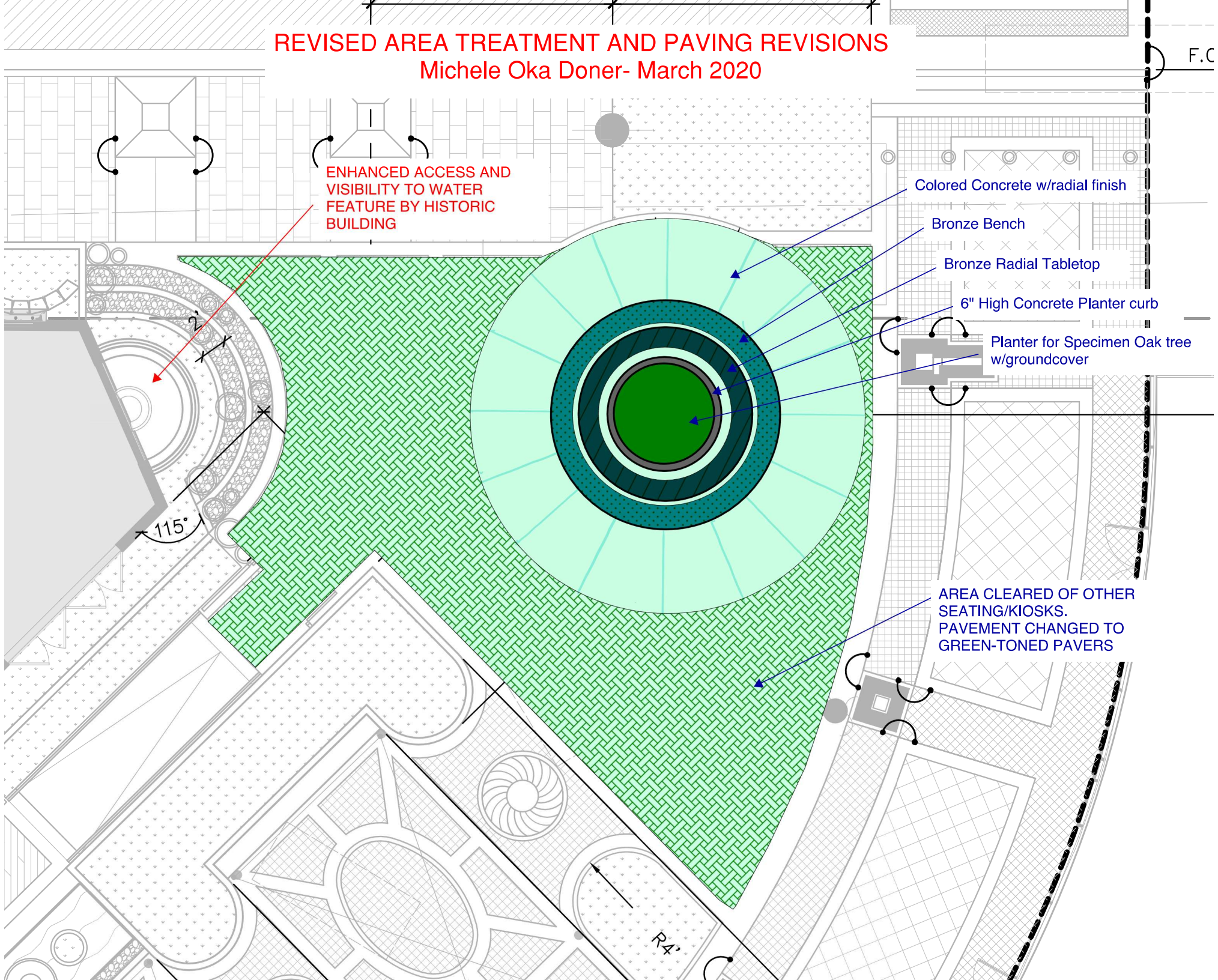
Planter for Specimen Oak tree  
w/groundcover

AREA CLEARED OF OTHER  
SEATING/KIOSKS.  
PAVEMENT CHANGED TO  
GREEN-TONED PAVERS

115°

R4'

F.C





## THE PLAZA CORAL GABLES - Art In Public Spaces

### Monumental Bench + Radial Ring- Michelle Oka Doner Studio

Item	Description	Amount
1	Schedule 1 - Monumental Ritual Bench 17' Dia. Cast Bronze	\$ 365,000
2	Schedule 3 - Radiant Bronze Counter Table Top - Cast Bronze	\$ 271,000
3	6 Lanterns @ tree/bench - copper by MOD Studio	\$ 12,000
	<b>Total MOD Studio</b>	<b>\$ 648,000</b>
4	Shipping	\$ 12,500
5	Electrical feed	\$ 8,500
6	Installation	\$ 11,000
7	green hue pavers (material only- installation by Owner)	\$ 6,500
8	plaque	\$ 2,500
	<b>Total other</b>	<b>\$ 41,000</b>
	<b>GRAND TOTAL</b>	<b>\$ 689,000</b>

#### Other items part of feature but being paid by Owner

- a concrete slab + curbs
- b Specimen tree
- c structural soil for tree roots
- d groundcover vegetation at tree base
- e installation of paver and planting materials @ area



**THE PLAZA CORAL GABLES**

updated:  
7/1/2020

**ART IN PUBLIC PLACES - Development Agreement 2.11 (i) & Zoning code, Article 3, Division 21.**

**Art in Public Places Fee: 1% of aggregate cost of construction & architectural fees**

Item/Package	Amount	Notes
Total Costs	\$ 344,370,709	
<b>1% Art in Public Spaces Fee</b>	<b>\$ 3,443,707</b>	

**A.1. Commissioning artwork to be incorporated within Developer's project**

Item/Package	Amount	Notes
1 Sculpture Garden - Tony Cragg Monumental	\$ 1,306,210	<i>approved by City/purchased</i>
2 Custom site furniture-bench+ring at specimen Oaktree-Oka Doner	\$ 689,000	<i>in process</i>
3 North side fountains @ escalators - Othoniel	\$ 827,500	<i>proposed</i>
4 Historic House Renovation	\$ 1,044,234	<i>proposed</i>
<b>Total commissioned art + 2901 Ponce Renovation</b>	<b>\$ 3,866,944</b>	

**Balance to city's Art Acquisition Fund (\$423,237) \*\***

\*\* Agave committed \$2.7M additional funds that it intended to use for art in public spaces. However, the City Manager has advised that a significant portion of this contribution may be allocated to fund the new Coral Gables Safety Building Project. Therefore, final Art-in public spaces budget, scope and program is currently not fully defined and to be determined later as per City of Coral Gables Commission and City Manager.



THE  
**PLAZA**  
CORAL GABLES

**A STATEMENT OF HOW THE PROPOSED ARTWORK ADDRESSES  
BROADER CITY URBAN DESIGN GOALS**

**Monumental Ritual Bench and *Radiant Bronze Counter Table Top***

AS A NATIVE MIAMIAN, DAUGHTER OF THESE BEAUTIFUL NATURAL SURROUNDINGS, I AM FAMILIAR WITH THE CORAL GABLES COMMUNITY AND ITS HISTORY. IT WAS WITH GREAT PLEASURE I RECEIVED AN INVITATION TO CONTRIBUTE TO THIS ENDEAVOR. IN RESPONSE, I PROPOSE TO CREATE A **MONUMENTAL RITUAL BENCH** TO ENCIRCLE THE BEAUTIFUL SPECIMEN OAK TREE THAT WILL BE INSTALLED IN THE PUBLIC SPACE. THE BENCH WILL BE CAST IN BRONZE, A MATERIAL THAT SPEAKS OF TIMELESSNESS AND ENDURANCE. THE BRONZE WILL BE PATINATED GREEN, APPLIED BY HAND WITH A BRUSH TO CREATE A STIPPLED EFFECT. THIS WILL ENHANCE THE FEELING OF DEEP SHADE PROVIDED UNDER THE LEAFY DOME OF THIS MATURE, MAJESTIC OAK, VISUALLY PLAYING WITH THE NOTION OF SUNLIGHT MOVING THROUGH THE LEAVES. IN ADDITION, THE USE OF GREEN PATINA CONNECTS THE SEATING TO THE VERDANT NATURE OF PLAZA CORAL GABLES' GENEROUS USE OF TREES AND PLANTINGS, ENHANCING THE NOTION OF A PARK-LIKE SETTING. WITHIN THE 17' BENCH, **A RADIANT BRONZE COUNTER TABLE TOP** WILL BE STRATEGICALLY PLACED TO EXTEND COMFORT LEVELS FOR SEATED VISITORS BOTH VISUALLY AND PHYSICALLY.

THE CAST BRONZE **MONUMENTAL RITUAL BENCH**, WITH ITS ADJOINING BRONZE **RADIANT BRONZE COUNTER TABLE TOP**, WILL ADD RESPITE FROM WORLDLY PACE AND MANY MOMENTS OF PLEASURABLE TRANSITION AND REFLECTION FOR ALL AGES TO ENJOY AT PLAZA CORAL GABLES. THEIR CIRCULAR FORMS PROMOTE COMMUNITY, SPEAKING THE LANGUAGE OF AND REFLECTING THE GOALS ESTABLISHED BY FOUNDING FATHER GEORGE MERRICK WHEN HE DESIGNED THE WONDERFUL CITY THAT BECAME CORAL GABLES.



THE  
**PLAZA**  
CORAL GABLES

## **SPECIFIC GOALS FOR THE ARTWORK**

### **MICHELE OKA DONER**

#### **MONUMENTAL RITUAL BENCH AND *RADIANT BRONZE COUNTER TABLE TOP***

THE MONUMENTAL RITUAL BENCH AND BRONZE COUNTER TABLE TOP WITH THEIR CIRCULAR FORMS PROMOTE COMMUNITY, SPEAKING THE LANGUAGE OF AND REFLECTING THE GOALS ESTABLISHED BY FOUNDING FATHER GEORGE MERRICK WHEN HE DESIGNED THE WONDERFUL CITY THAT BECAME CORAL GABLES.





THE  
**PLAZA**  
CORAL GABLES

## **THE PROCESS USED FOR SELECTION OF THE ARTIST**

THE PLAZA DEVELOPMENT TEAM MET WITH MRS. DONER AT HER STUDIO IN NEW YORK. THEY THEN INVITED HER TO PROPOSE A OUTDOOR SCULPTURE FOR ONE OF THE GREEN SPACES ON THE PROJECT. MICHELE PROPOSED THE RITUAL RING BENCH AS A GREAT ADDITION TO THE PLAZA.



THE  
**PLAZA**  
CORAL GABLES

**A SCHEDULE FOR THE DEVELOPMENT AND COMMISSIONING OF THE ARTWORK**

INSTALLATION PROJECTED FOR 2021.



THE  
**PLAZA**  
CORAL GABLES

## **THE INTENDED APPROACH TO MANAGING THE PROJECT**

AGAVE AS DEVELOPER AND OWNER WILL WORK WITH THE MICHELE OKA DONER STUDIO AND MANAGE THE COORDINATION AND INSTALLATION JUST AS THE WE MANAGE THE REST OF THE PROJECT CONSTRUCTION, WITH ASSISTANCE FROM CM AGENCY HILL INTERNATIONAL AND OWN 15 PERSON STAFF.