

Gondola Building Relocation

SEPTEMBER 25, 2025

CORAL
GABLES®
THE CITY BEAUTIFUL



HISTORY

2

2



- Construction of the Biltmore Hotel began in 1924.
- The Gondola building is an original accessory structure of the Biltmore Hotel Complex.
- The location was selected to provide a launching area and storage facility for 15-25 gondolas imported from Italy.
- The gondolas provided the Biltmore hotel guest access to Tahiti Beach and Biscayne Bay.
- In December 2024, the Historic Preservation Board passed a motion recommending the approval of the reconstruction of the Gondola building at its current location.
- On August 14, 2025, the board was advised that the City was

ORIGINAL LOCATION

2

2



EXISTING BUILDING

2

2



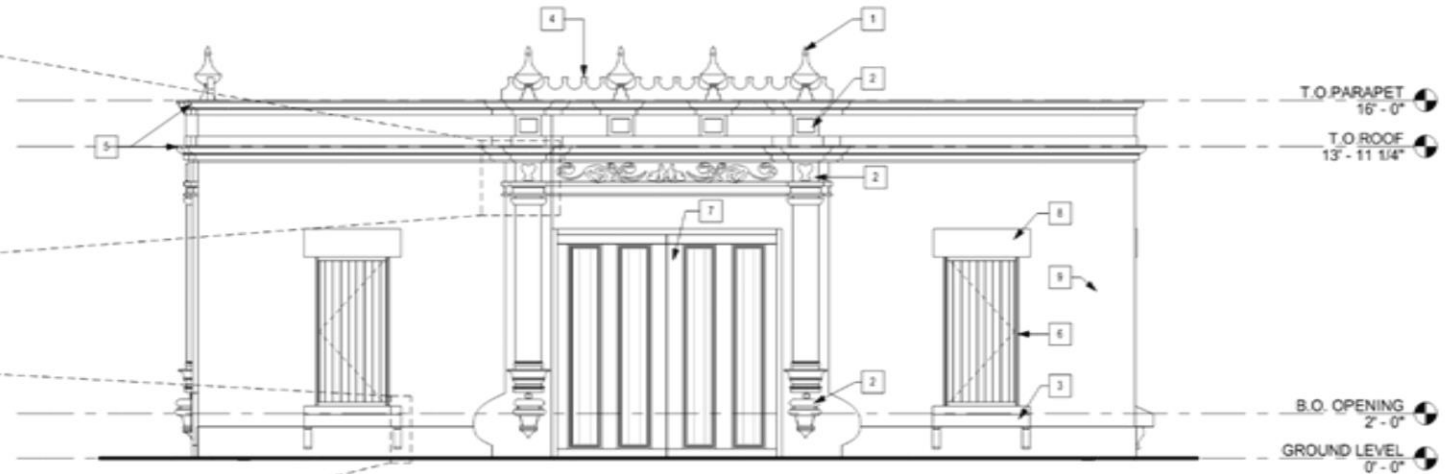
EXISTING BUILDING

2

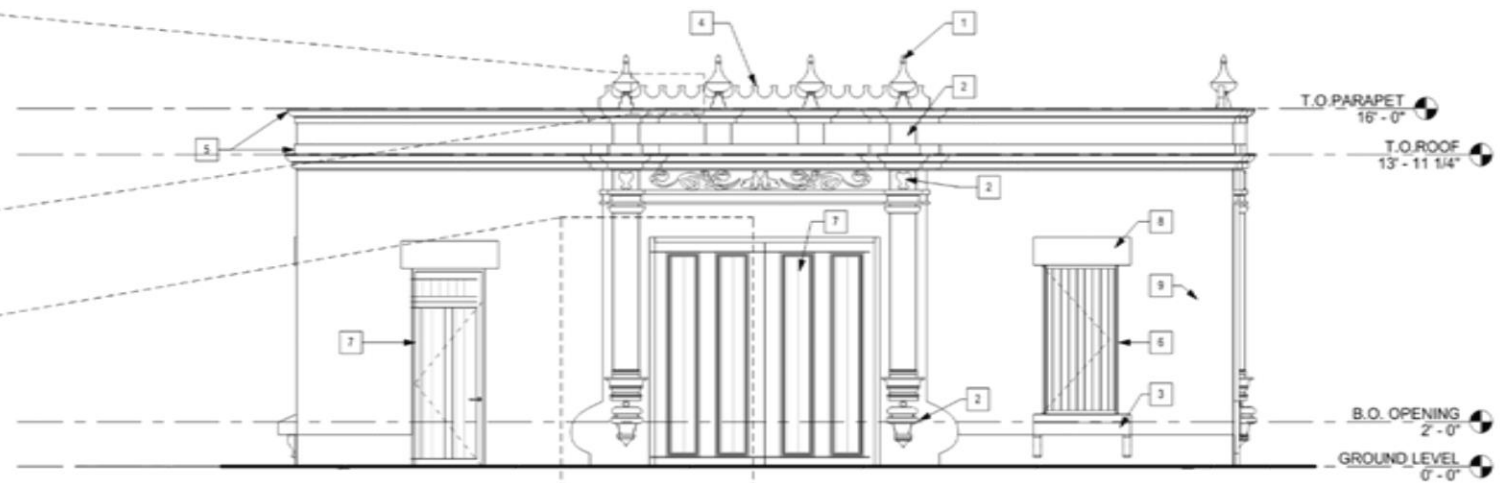
2



PROPOSED PLAN ELEVATIONS



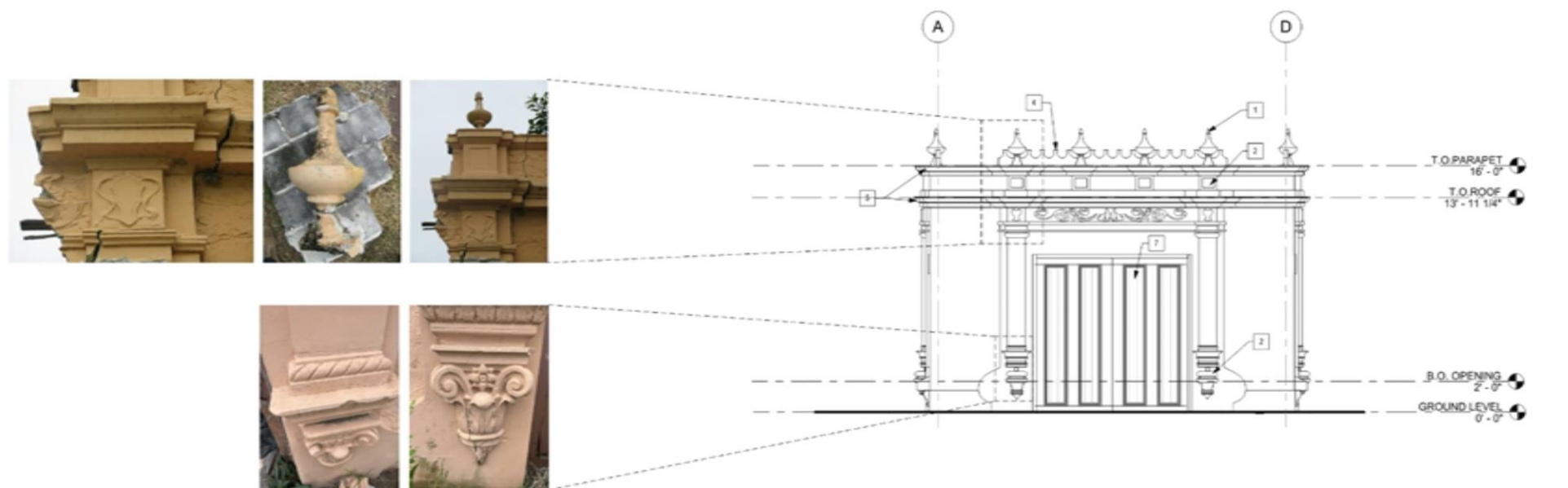
2 SOUTH ELEVATION
SCALE: 1/4" = 1'-0"



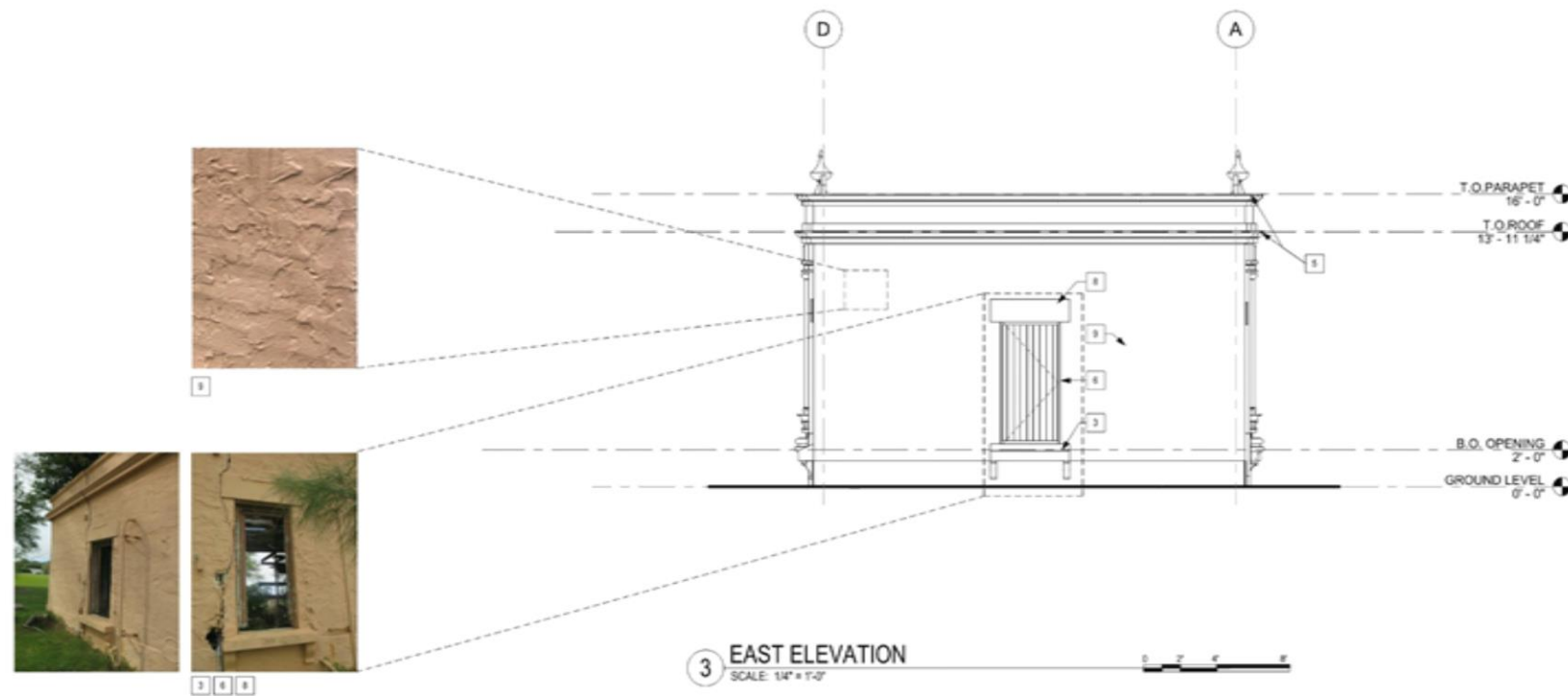
1 NORTH ELEVATION
SCALE: 1/4" = 1'-0"



PROPOSED PLAN ELEVATIONS



4 WEST ELEVATION
SCALE: 1/4" = 1'-0"

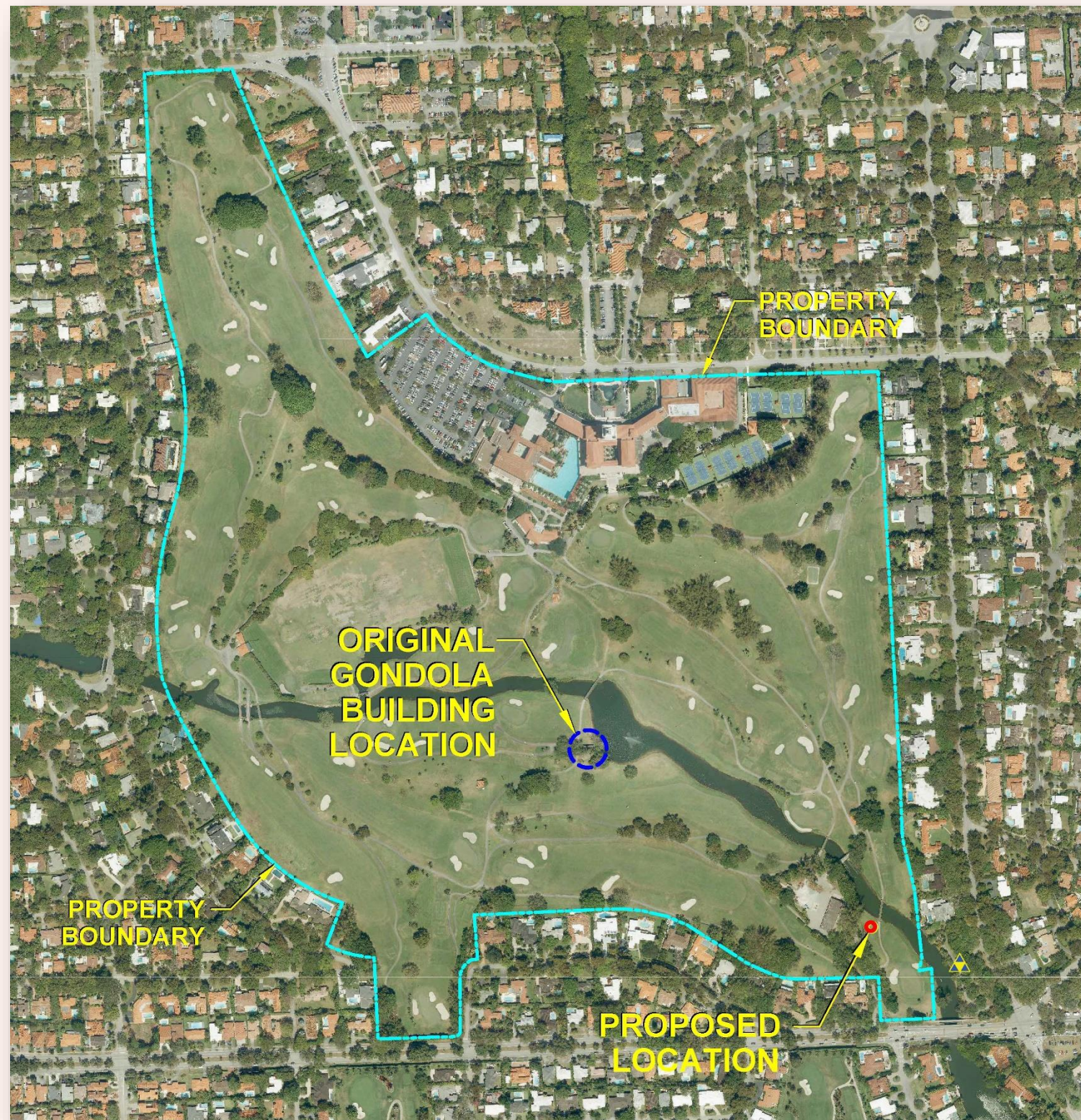


3 EAST ELEVATION
SCALE: 1/4" = 1'-0"

ORIGINAL & NEW LOCATIONS

2

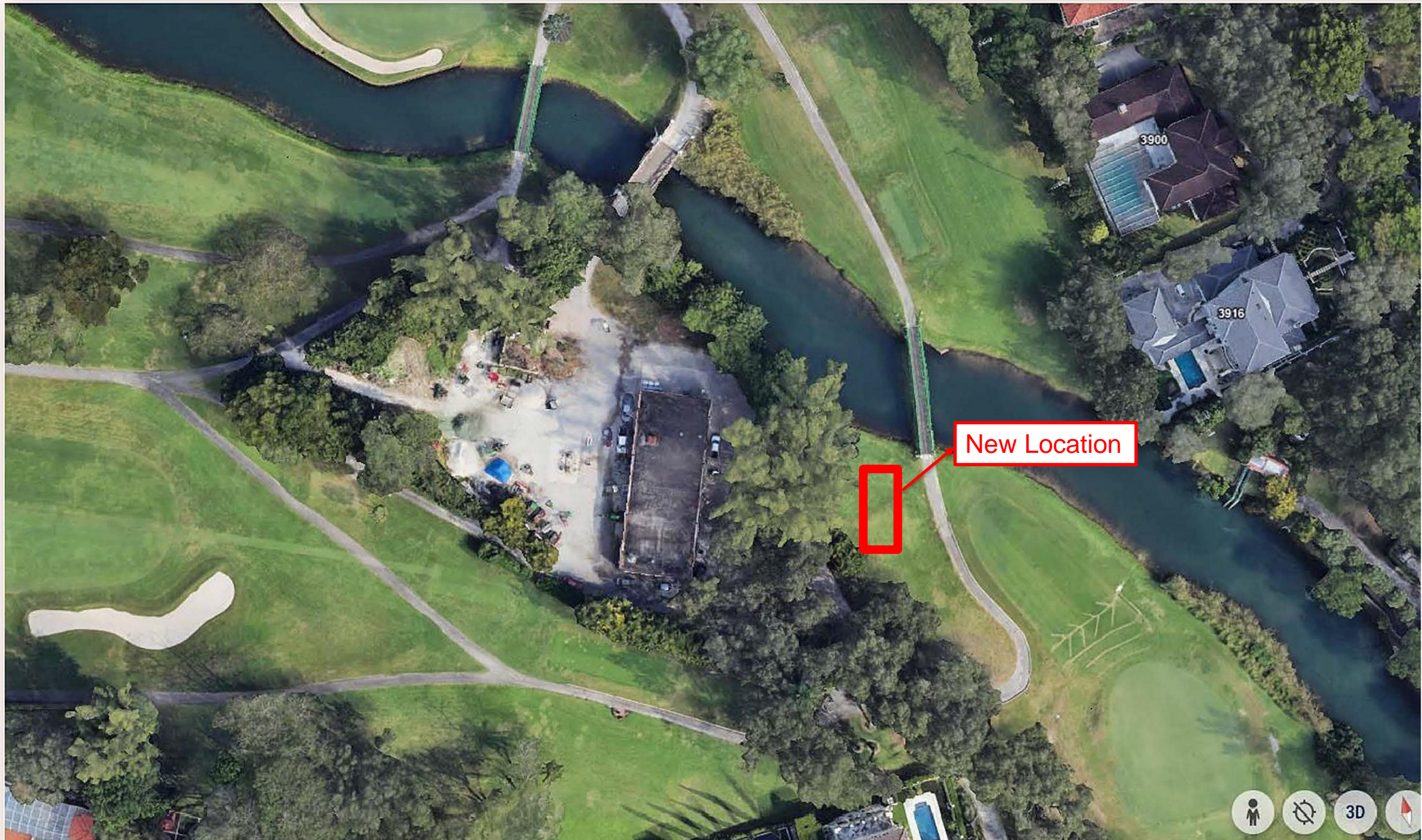
2



NEW LOCATION

2

2



PROPOSED LOCATION

2

2

- New location will be more accessible to the public from Bird Road.
- Decreased likelihood of disruption to golfing activities during and after construction.
- Increased safety of golf players, construction workers, and future patrons.
- Better access to construction equipment and personnel.
- Reduced risk of damage to a nationally recognized golf course due to construction activities.
- Biltmore Hotel operations supports the new location.
- Structure will be located by the canal as required by the State of Florida – Department of State – Division of Historical Resources (grantor). The Grantor has approved this site for the rebuilding of the Gondola Building.

Thank you!

Public Works Department: *Keeping the City Beautiful*
Yesterday, Today & Tomorrow

PWDepartment@coralgables.com

**CORAL
GABLES**
THE CITY BEAUTIFUL