

*SOLAR PANELS FOR THE
GRANADA CLUBHOUSE
DINER*

JANUARY 10, 2023

**CORAL
GABLES**®
THE CITY BEAUTIFUL



GRANADA CLUBHOUSE/ DINER



- Average yearly energy use (FY18-21) - 175,940 kWh (75% Diner vs. Pro-Shop)
- Calendar year (2021) electricity bill - \$14,518

SOUTHEAST OPTION

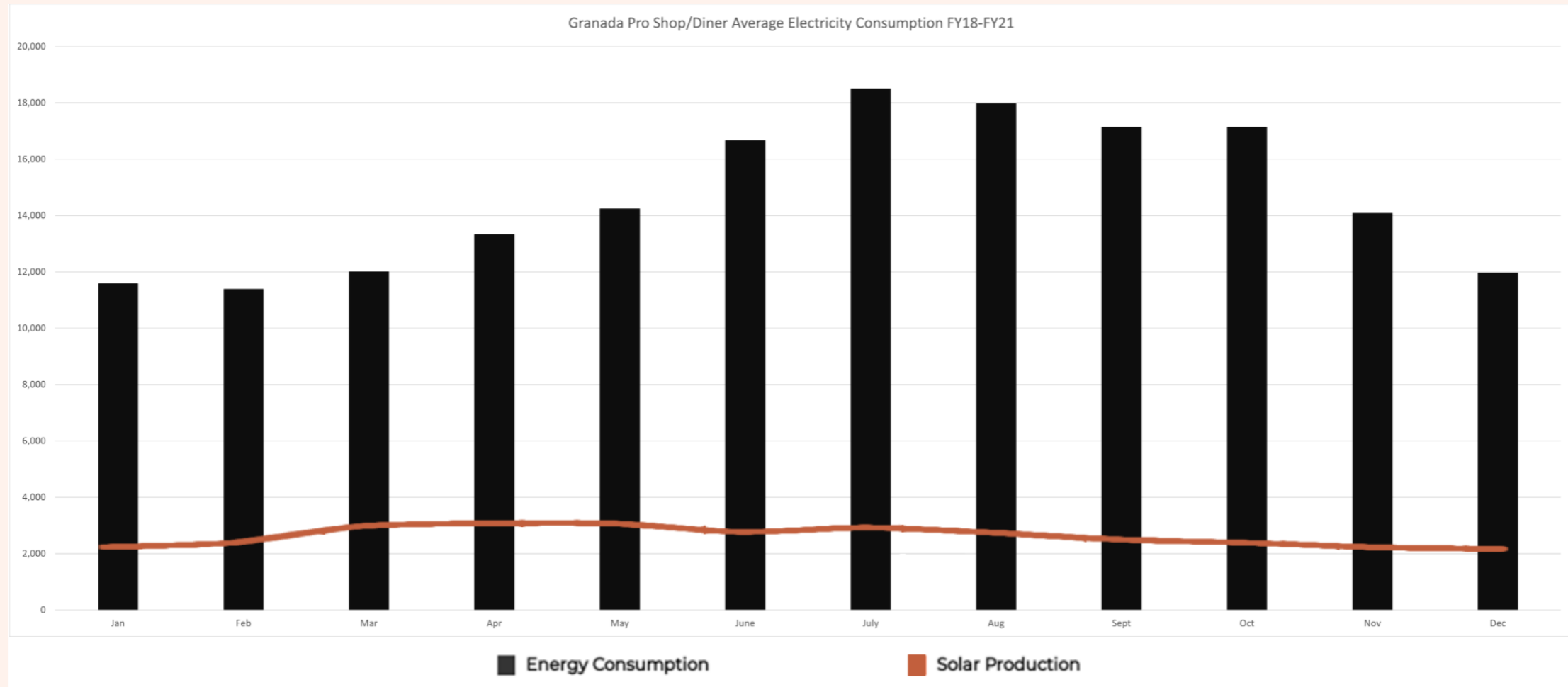


- Approximately 1,100 sq-ft of allowable roof space
- System Size: 22.8 kW- 60 panels at 380W
- Annual Estimated Production: 33,815 kWh
- American made with a 25-year warranty
- Review by the Board of Architects and the Historical Preservation Board

SOUTHEAST OPTION

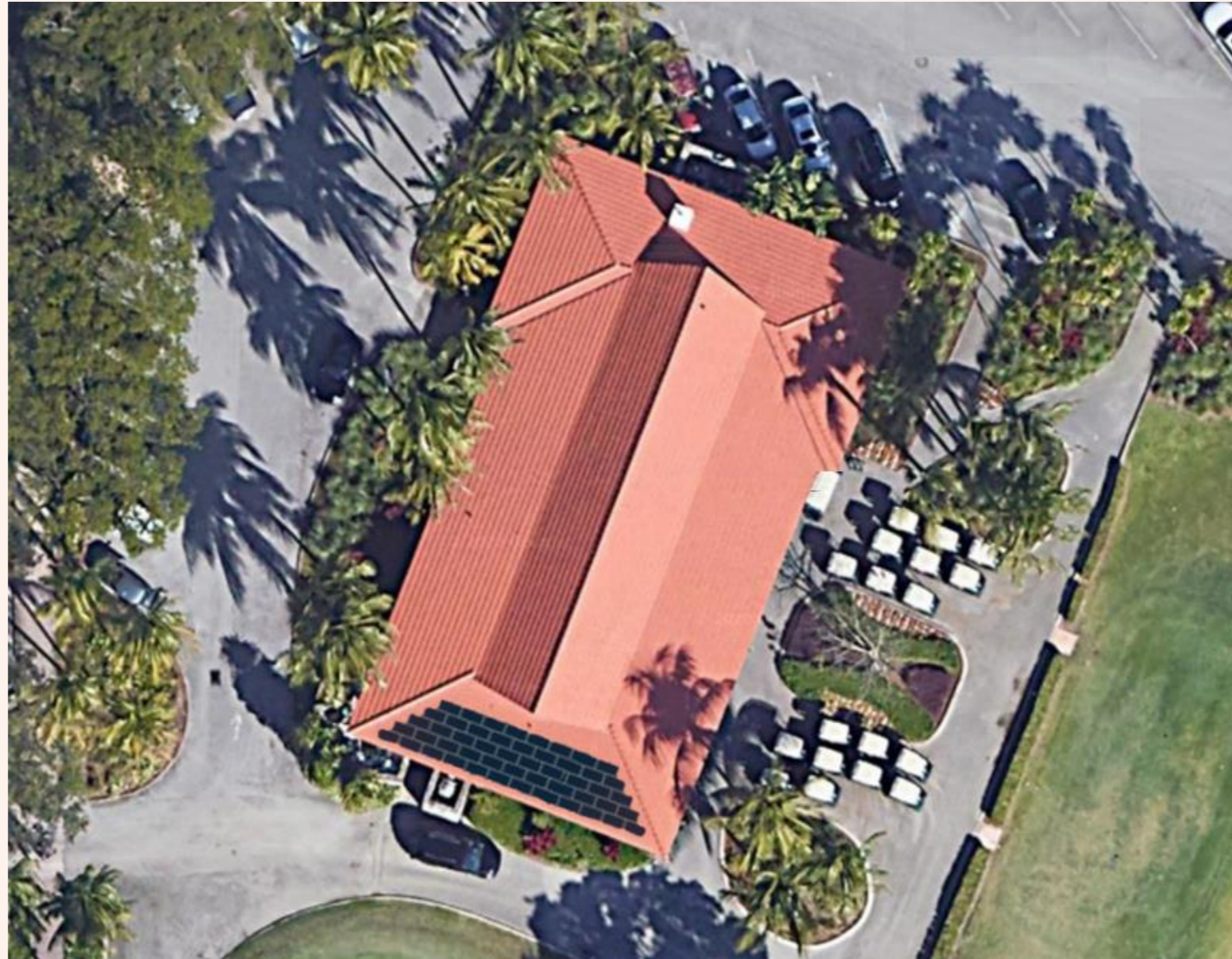


SOUTHEAST OPTION



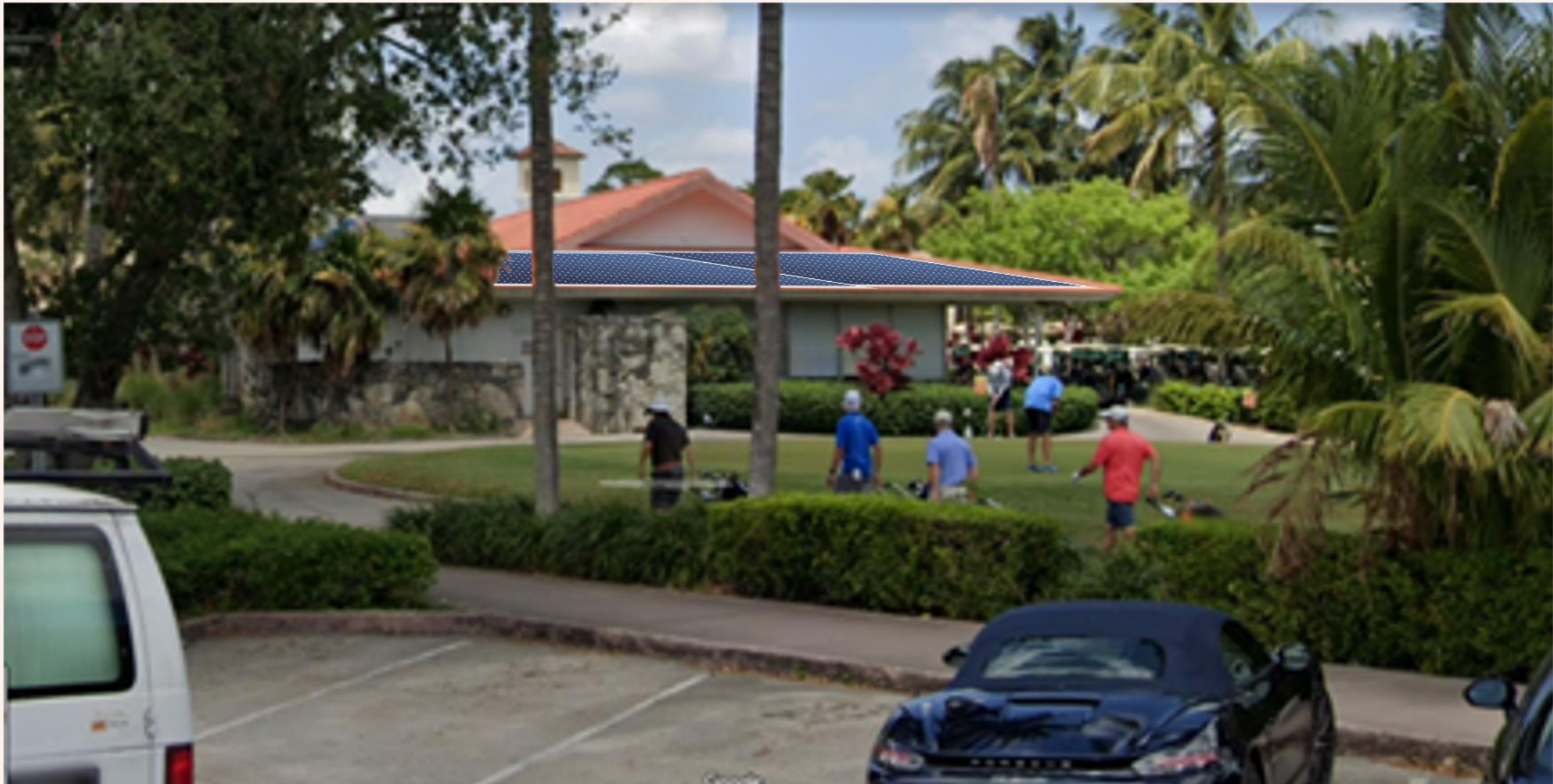
- Will offset approximately 25 percent of diner's historical energy consumption
- A net metering agreement with FPL and the installation of a utility-interactive inverter will be required
- Estimated Solar Panel Installation Cost: \$87,000, including design and contingency
- The project is estimated to offset 16 tons of CO₂ for the life of the system, and the equivalent of 561 new trees being planted

SOUTHWEST OPTION



- Approximately 400 sq-ft of allowable roof space
- Estimated Solar Panel Installation Cost: \$35,000, including design and contingency
- Reduces the visual impact of the panels to the surrounding neighborhood
- Will offset approximately 10 percent of diner's historical energy consumption

SOUTHWEST OPTION



RETURN ON INVESTMENT



- Return on investment is approximately 17 – 18 years.
- Return on investment net of a potential \$25,000 donation:
 - Southeast Option: 13 years
 - Southwest Option: 5 - 6 years.
 - Both Options: 14 - 15 years

Thank You!

