

Art in Public Places

IN PRIVATE DEVELOPMENT

**CORAL
GABLES**[®]
THE CITY BEAUTIFUL



MERRICK 250

WAIVER REQUEST
ALTA DEVELOPERS



SECTION 9-103

Art in Public Places Fund Requirements, Waivers, and Exemptions:

B. Waiver of the Art in Public Places Fee

1. Acquiring or Commissioning Artwork

Approval Process

- Arts Advisory Panel, recommendation: approval/denial vote: 5 to 2

September 6, 2023

- Cultural Development Board, unanimous recommendation: approval/denial vote: 5 to 0

September 19, 2023



Reconstructed Natures
gt2P for Alta Coral Gables LLC

**great
things
to People.**
studio design

web: <http://gt2p.com/>

Instagram: @gt2P

INTRODUCTION

Merrick 250, a 174-unit, luxury mid-rise, multi-housing property. Nestled in the heart of the Coral Gables neighborhood, it will offer residents a dynamic and walkable urban lifestyle.

The Property is conveniently situated near high-end amenities, including The Shops at Merrick Park, food and beverage venues, ample grocery options, and nearby fitness centers.



CORAL GABLES
HIGH SHOOOL

MERRICK
250

THE
COLLECTION

BELMONT
VILLAGE

SHOPS AT
MERRICK PARK



MERRICK 250





Paracrafting:

Between Digital Crafting and Physical Parametrics



Sebastián Rozas,
-Cofounder gt2P
-Architect
-Project Manager

Guillermo Parada,
-Cofounder gt2P
-Architect
-Creative Director

Tamara Pérez,
-Cofounder gt2P
-Architect
-Production Manager

Victor Imperiale,
-Partner gt2P
-Architect
-Parametric Director

Represented by :

FRIEDMAN BENDA



DENVER
art
MUSEUM

Remolten
Stools



THE
MET

Less CPP: Catenary
Pottery Printer
Lights



DENVER
art
MUSEUM

Marble vs
Bronze
Stools



the
DESIGN
MUSEUM

Suple Bench



MIAMI
DESIGN
DISTRICT

Conscious Actions
Swing



COOPER
HEWITT
Smithsonian Design Museum

Remolten Monolita
Chair



NGV

Remolten
Stool

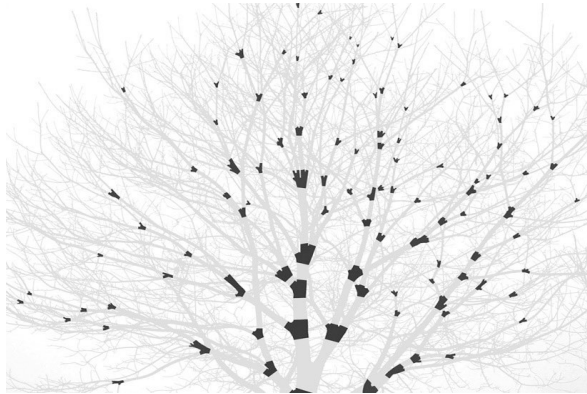


Bard
Graduate
Center

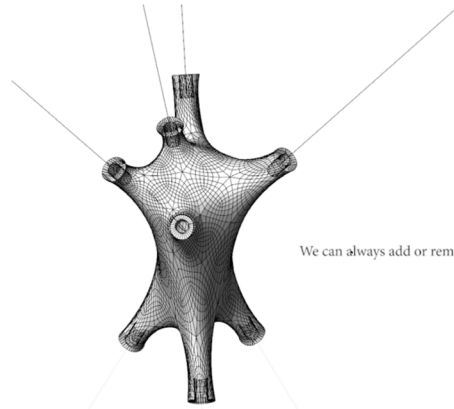
Less CPP
Device

PROJECT DEVELOPMENT TEAM
Reconstructed Natures

How do we create these pieces?



Inspiration in nature



We can always add or remove paths

Top Curves	
Bottom Curves	
JOINT Length	52
JOINT Leg's Width	10
JOINT Leg's Length	5
MESH Smoothness	3
MESH Relaxation	300
INSET Length	-8
INSET Diameter	5.0
LEGS Shape Scaling	0.00
Coincident Original Vertex	True

design the algorithm



Digital Crafting

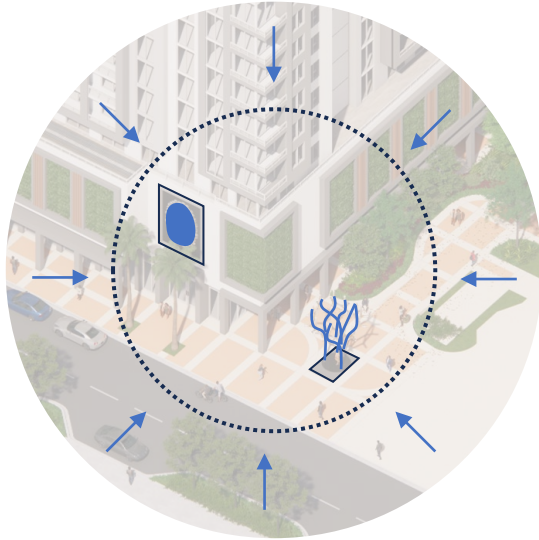


Hand Crafting



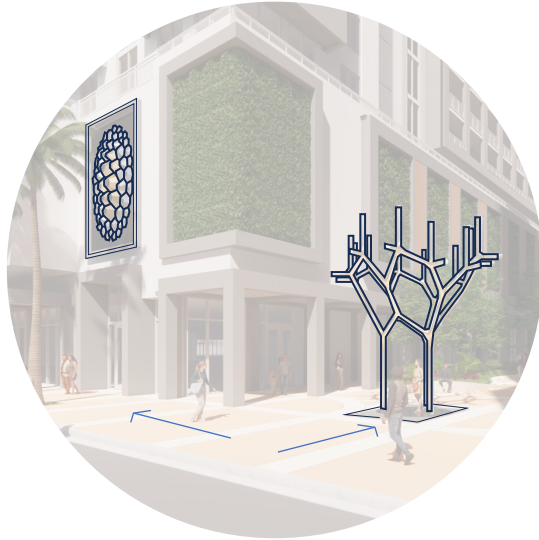
Object Family / Paracrafting

How can we contribute to the city's vision for public art?



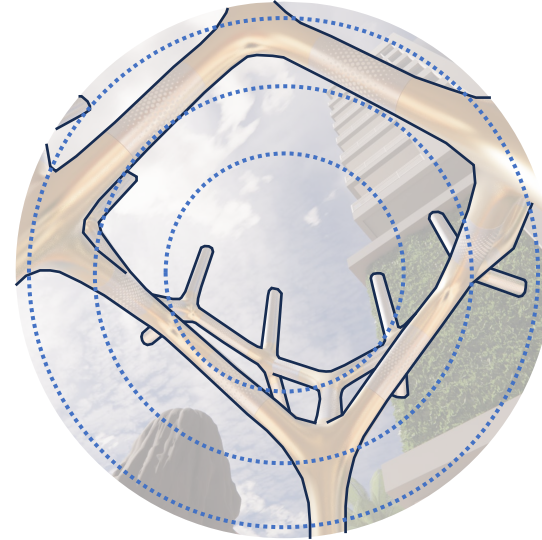
Landmark

From afar the pieces work as a collection that populates the corner of the paseo with reminiscences of the values of Coral Gables.



Geometry and invitation

Up close appears the detailed geometry and texture that invite you to get even closer and be part of the piece.



Inner Space

An experience of introspection and connection with the piece.

The three instances of artistic experience around the pieces

Where can we find those geometries?



Suple Tree Sculpture is a piece inspired by the grapefruit trees that allowed the development of Coral Gables.



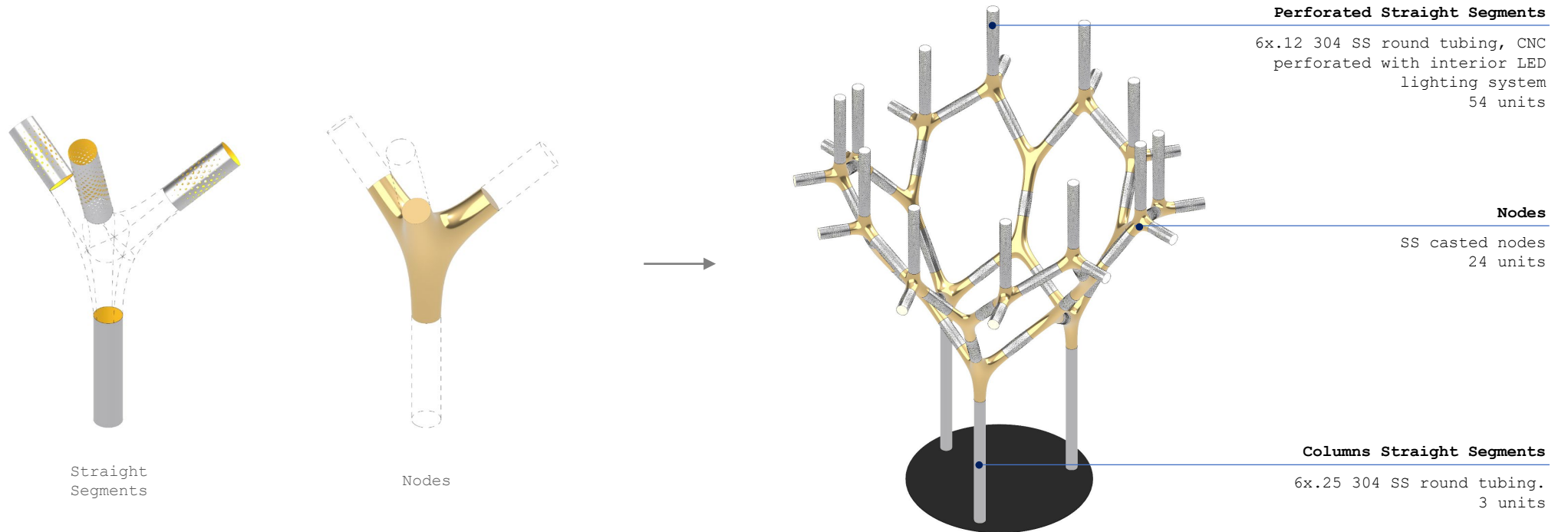
SUPLE TREE SCULPTURE

Size: 16' 9" (5,1m) - 16' 9" (5,1m)

Height: 19' 5" (5,9m)

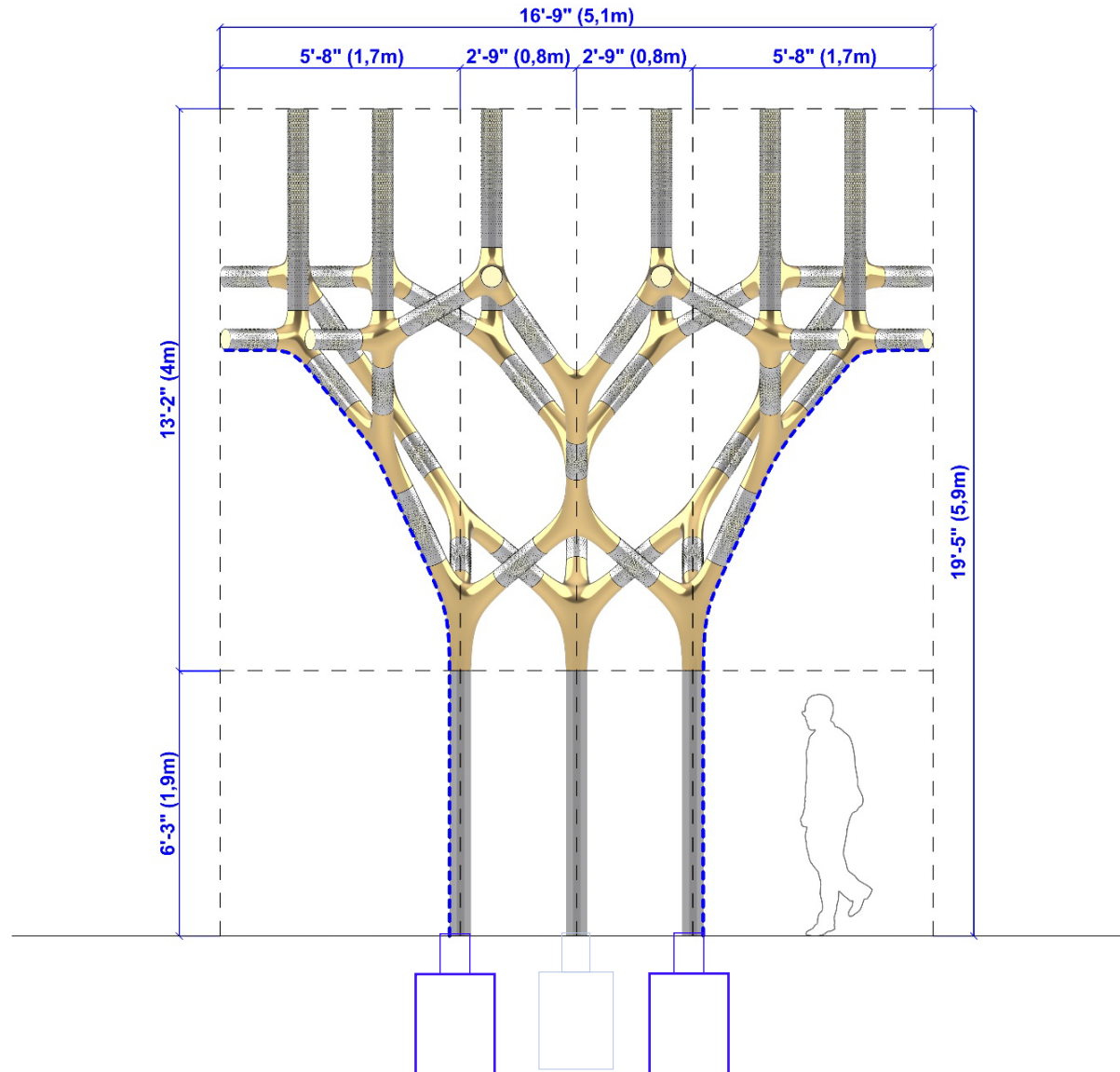
Weight: 5.000 lbs. (2.268 kg)

FABRICATION METHOD
Suple Tree Sculpture



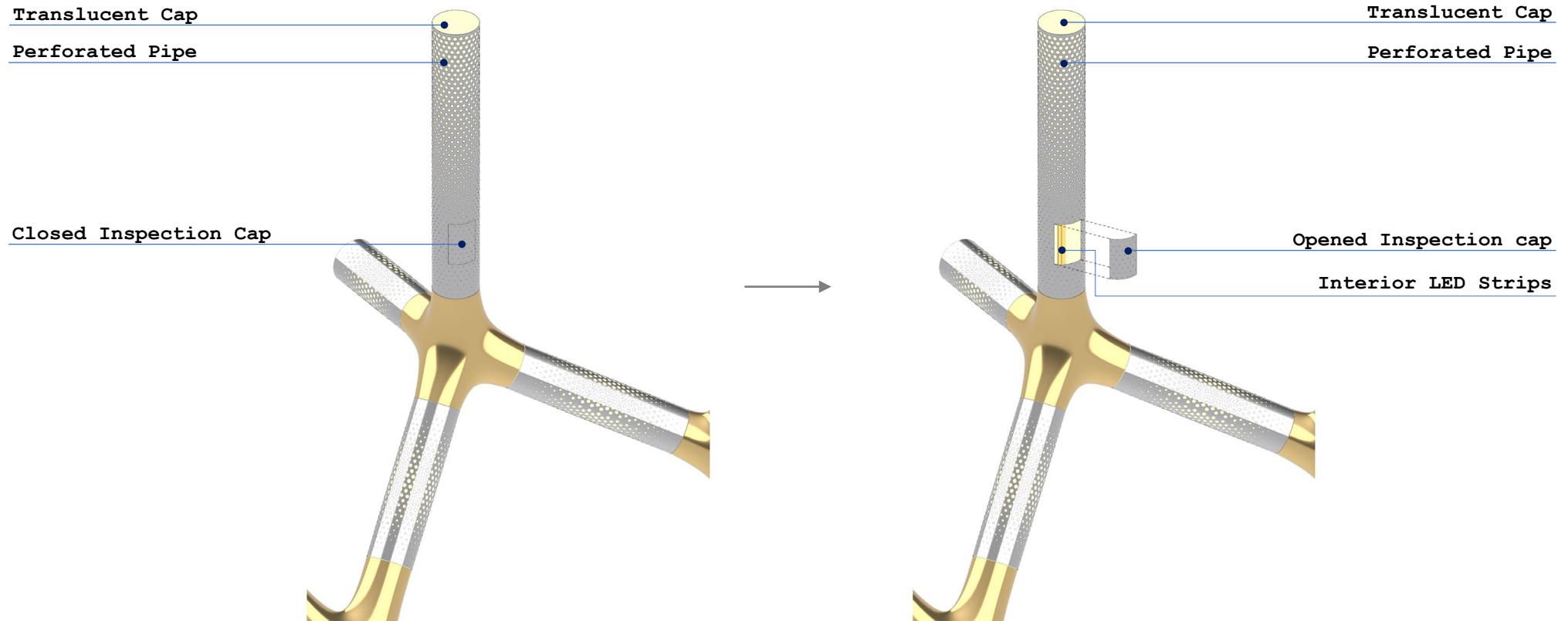
Straight segments are made from two types of standard stainless-steel pipes with $\phi 6''$, one type is CNC perforated for the upper sections segments and have an interior LED lighting system. Nodes segments are painted in bronze color

STRUCTURAL CONSIDERATIONS
Suple Tree Sculpture



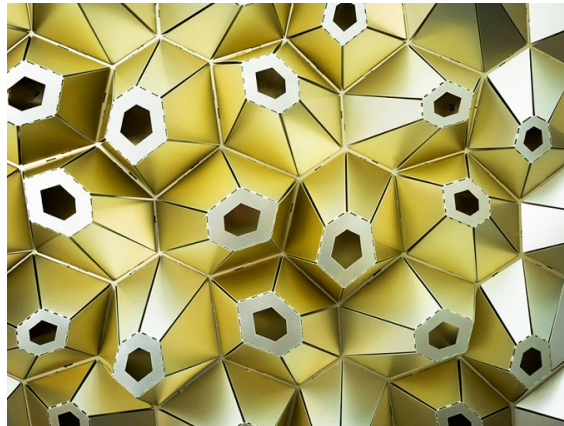
The sculpture's columns will be attached to the ground with concrete footings designed & specified by CRAFTS considering all Miami's hurricane laws

LIGHTING
Suple Tree Sculpture



The sculpture considers inspection caps on all perforated pipes segments to allow the replacement of the LED strips inside them when necessary.

RECONSTRUCTED NATURES
Coral Mural



+

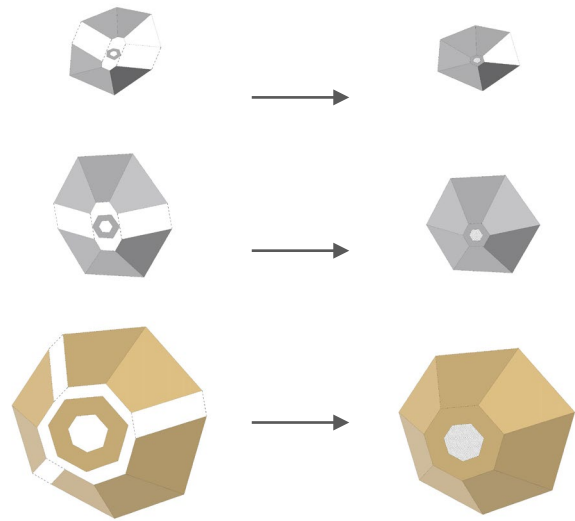


*Coral Mural is a piece inspired by the coral stones underneath
Florida's sea using the algorithm of our previous project Hope
keeper*

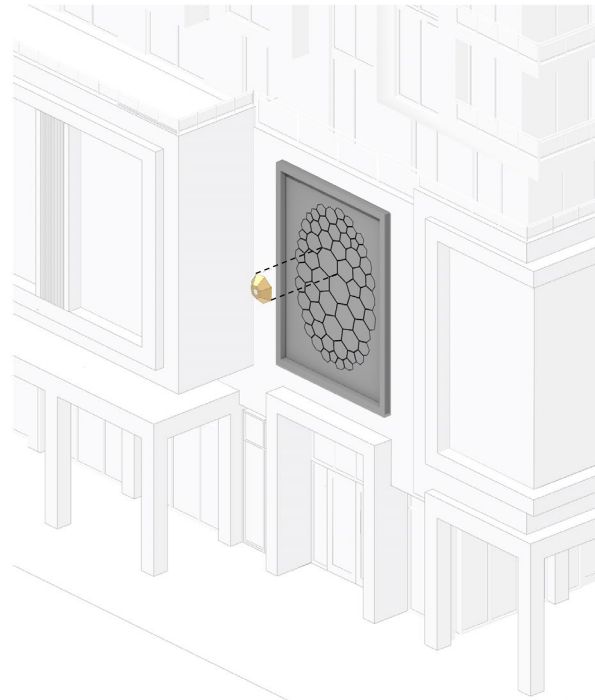


Size: 18' 4" (5,6m) - 12' 9" (3,9m) **CORAL MURAL** **Depth:** 1' 2" (0,4m) **Weight:** 600 lbs. (272 kg)

FABRICATION METHOD
Coral Mural



Coral Cells
assembling



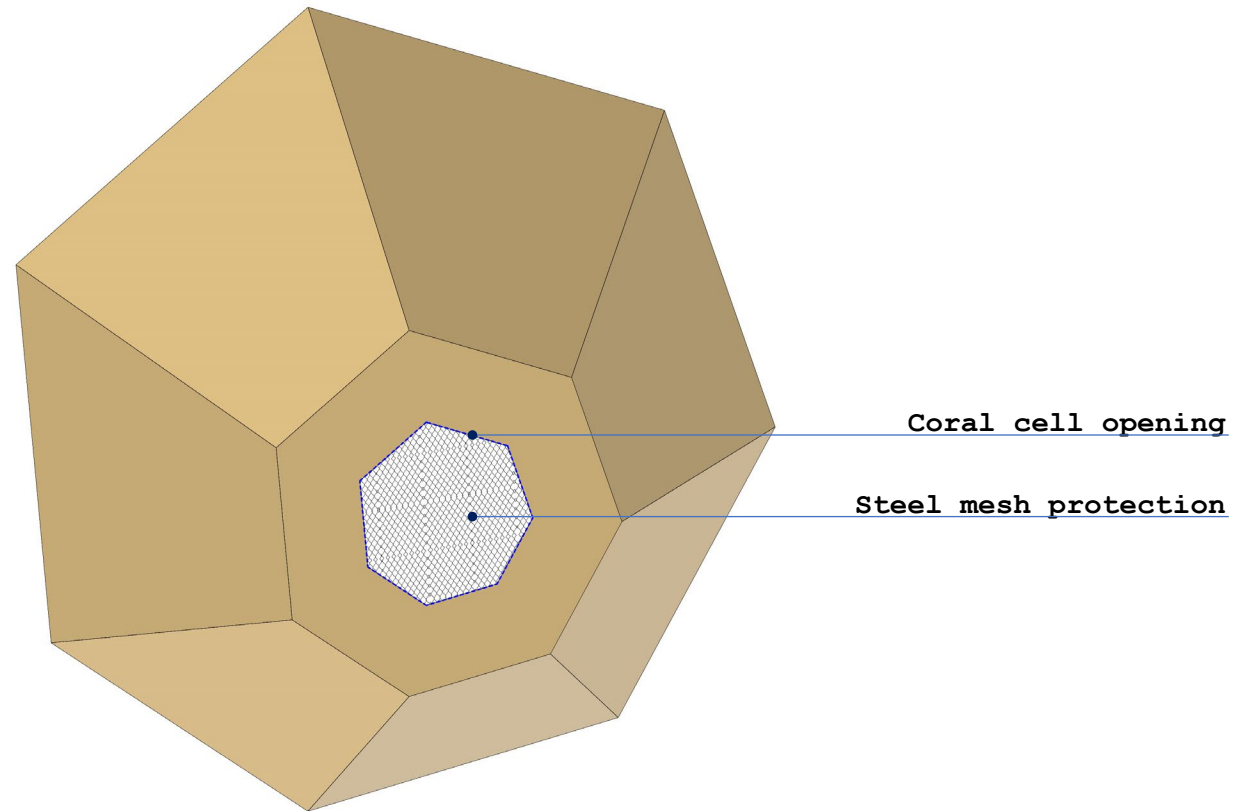
Drilling
cells to
existing wall



Completed
Mural

Each coral cell is composed from two (2) to three (3) CNC laser cut and folded steel sheets that are bolted together. One by one all the fifty-eight (58) Coral cells are drilled to the canvas wall

INTRUSION PROTECTION
Coral Mural



Each opening in the mural's cells have a thin steel mesh
inside of them that prevents the intrusion of water and
small birds



RECONSTRUCTED NATURES
Day Time



RECONSTRUCTED NATURES
Night Time

TECHNICAL INFORMATION

SUPLE TREE

MATERIALS

- 304 Stainless Steel Cast Nodes
- 304 Stainless Steel Perforated Round Tubes
- 304 Stainless Steel Base Plates
- Interior LED Strip Lighting System

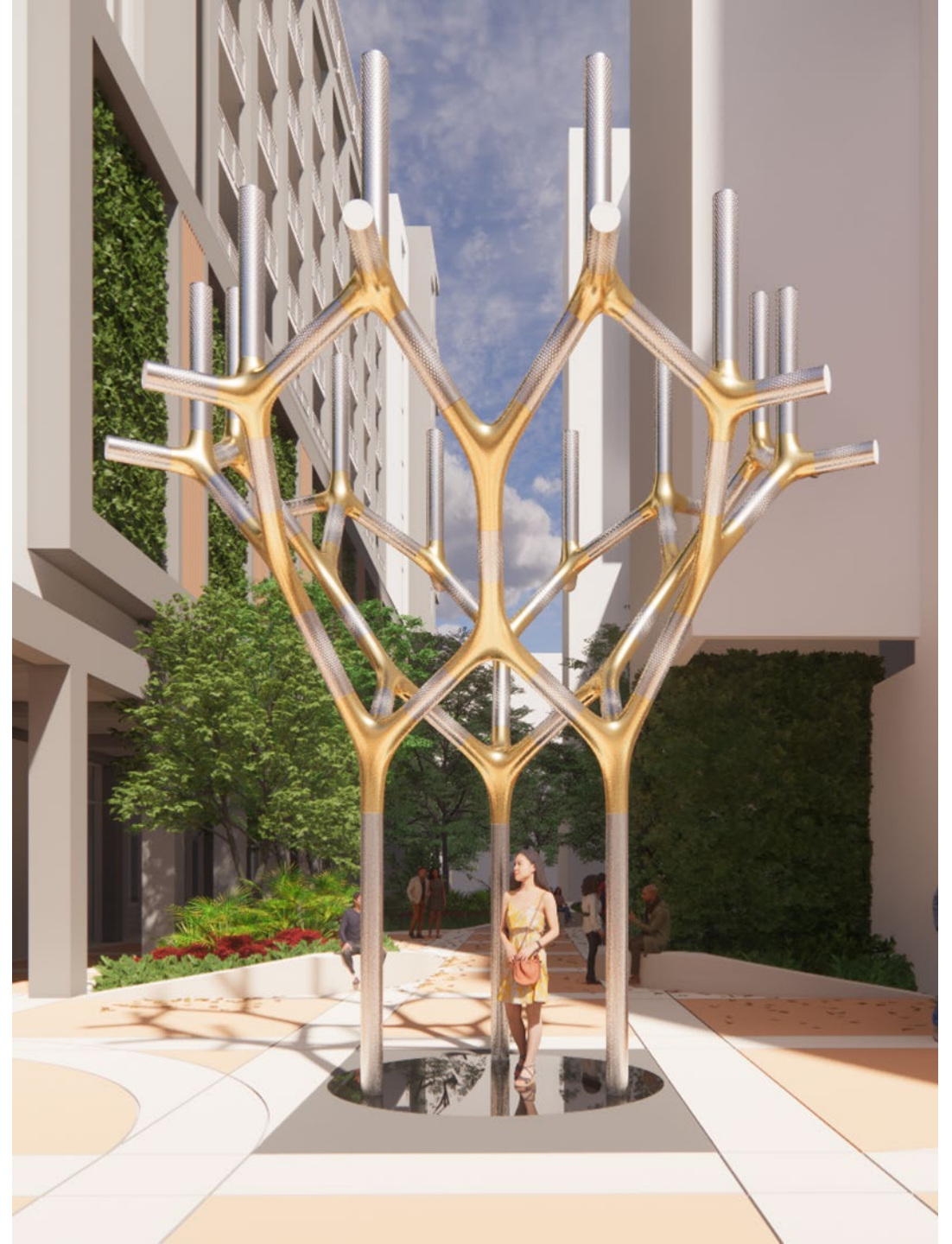
COATING

- Paint (Brand PPG - Product Line Matthews Paint)
- Epoxy Primer (sealing step in paint)
- Matthews Acrylic Polyurethane - Super Satin Clear **(10-year warranty extension and can be reapplied to the piece without the need for disassembly)**

Super Satin Specs Link:

<https://drive.google.com/drive/folders/1UsGJBxoTTKd440yIIZnG-cmEqiujBE2X?usp=sharing>

**All material and specs to be reviewed by IA Structural Engineer during Design Development*



TECHNICAL INFORMATION

SUPLE TREE

MAINTENANCE PLAN

- Inspect and clean bi-annually
- Never use abrasives on stainless steel
- In case of dirt & grime use warm soapy water and a clean/ new soft cloth
- In case of oils stains, adhesive marks & tapes use isopropyl alcohol followed by a thorough clean afterwards with warm water
- In case of water scales use vinegar followed by a thorough clean afterwards with warm soapy water
- In case of mild rust use a cleaner that includes phosphoric, oxalic, or sulfamic acid to clean rust marks. Carefully flush the area with warm soapy water after and be careful that any acid doesn't wash off onto other areas around the stainless steel
- Matthews Paint Maintenance and Specs boiler Link:
<https://drive.google.com/drive/folders/1QUqmBnOkRYYgJfAHgNgii7nN19WQHLaI?usp=sharing>
- Graffiti Removal Guidelines Specs Link:
<https://drive.google.com/drive/folders/1y-FkzQ7zYpMk-XVeOzi9riHLvq7-hlO?usp=sharing>

**All material and specs to be reviewed by IA Structural Engineer during Design Development*



TECHNICAL INFORMATION

CORAL MURAL

MATERIALS

- 16ga Industrial Urethane Coated Steel (Coral)
- 11ga Industrial Urethane Coated Steel (Mounting System)

COATING

- Paint (Brand PPG - Product Line Matthews Paint)
- Epoxy Primer (sealing step in paint)
- Matthews Acrylic Polyurethane - Super Satin Clear **(10-year warranty extension and can be reapplied to the piece without the need for disassembly)**

Super Satin Specs Link:

<https://drive.google.com/drive/folders/1UsGJBxoTTKd440yIIZnG-cmEqiujBE2X?usp=sharing>

**All mounting material and specs to be reviewed by building Engineer during Design Development*



TECHNICAL INFORMATION
CORAL MURAL

MAINTENANCE PLAN

- Inspect and clean bi-annually
- Do not use abrasive detergents or harsh chemicals to clean surface
- Remove animal dropping or tree sap upon discovery, as they can do permanent damage
- Use mild detergent water solution utilizing a soft wash mitt or cloth followed by a thorough clean water rinse
- Dry with a damp chamois, microfiber towel, or soft cloth
- Use caution when cleaning painted surfaces with a pressure washer. DO NOT use pressure washers that exceed 1,200 psi
- Matthews Paint Maintenance and Specs boiler Link:
<https://drive.google.com/drive/folders/1QUqmBnOkRYYgJfAHgNgii7nN19WQHLaI?usp=sharing>
- Graffiti Removal Guidelines Specs Link:
<https://drive.google.com/drive/folders/1y-FkzQ7zYpPMk-XVeOzi9riHLvq7-hlO?usp=sharing>

**All mounting material and specs to be reviewed by building Engineer during Design Development*



RECONSTRUCTED NATURES
Provider Ignition Arts



Production Cost: \$496.800
Lights: \$16.200
Artist Fee: \$100.000

Total: \$613.000

** This budget considers 10-year coating warranty*



Production Cost: \$80.000
Artist Fee: \$10.000

Total: \$90.000

** This budget considers 10-year coating warranty*



Reconstructed Natures
gt2P for Alta Coral Gables LLC

**great
things
to People.**
creative design

web: <http://gt2p.com/>

Instagram: @gt2P

Art in Public Places Fee

- 1% of the Project's total Art in Public Places estimate fee.
- The cost of the proposed art piece and installation:
\$703,000 for artwork + additional \$ for packing, shipping, permits, installation, foundation, electrical work, insurance, and all other related expenses.
- Funds toward the artwork should not replace expenses toward lighting requirements.
- The artwork and all related expenses will be the responsibility of the Developer, with any difference in cost to be paid into the Art Fund.

Maintenance

- Developer is required to provide for the perpetual maintenance of the artwork in accordance with the City of Coral Gables Art in Public Places Funding, Goals, and Implementation Guidelines, which will be memorialized in a covenant to run with the land.
- Coordination of maintenance will be responsibility of the Developer and is not related to the Art in Public Places Fee.



Thank You

HISTORICAL RESOURCES &
CULTURAL ARTS DEPARTMENT

CORAL
GABLES
THE CITY BEAUTIFUL