

Gondola Building Relocation

HISTORIC PRESERVATION BOARD
AUGUST 14, 2025

CORAL
GABLES®
THE CITY BEAUTIFUL



HISTORY

2

2



- Construction of the Biltmore Hotel began in 1924.
- The Gondola Building is an original accessory structure of the Biltmore Hotel Complex.
- The location was selected to provide a launching area and storage facility for 15-25 gondolas imported from Italy.
- The gondolas provided the Biltmore hotel guest access to Tahiti Beach and Biscayne Bay.
- Biltmore Hotel and Country Club Complex was designated as a national landmark in 1996.

EXISTING LOCATION

2

2



EXISTING BUILDING

2

2



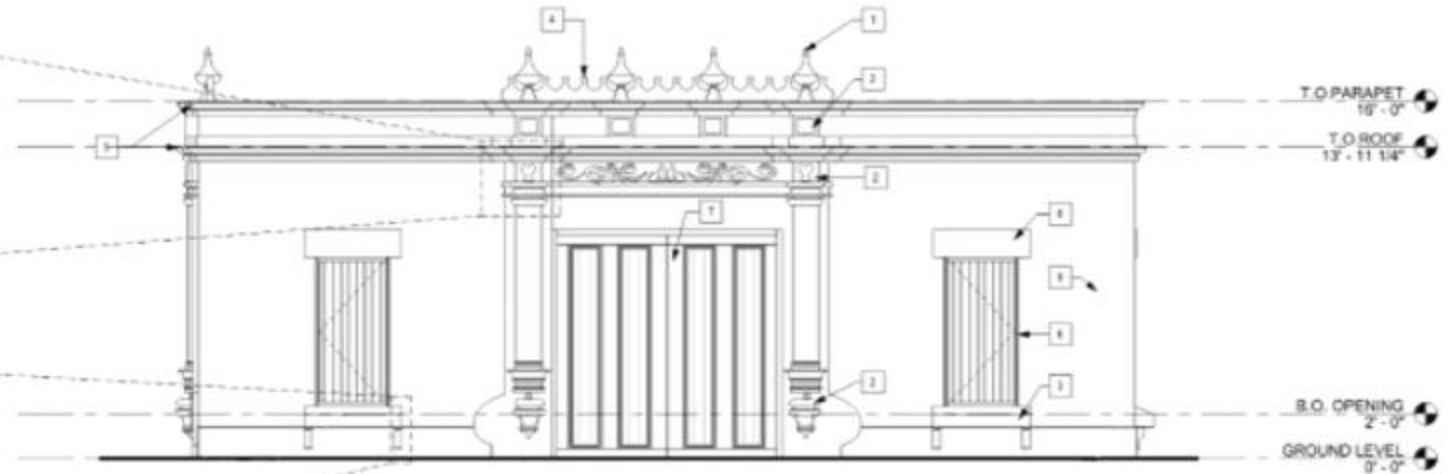
EXISTING BUILDING

2

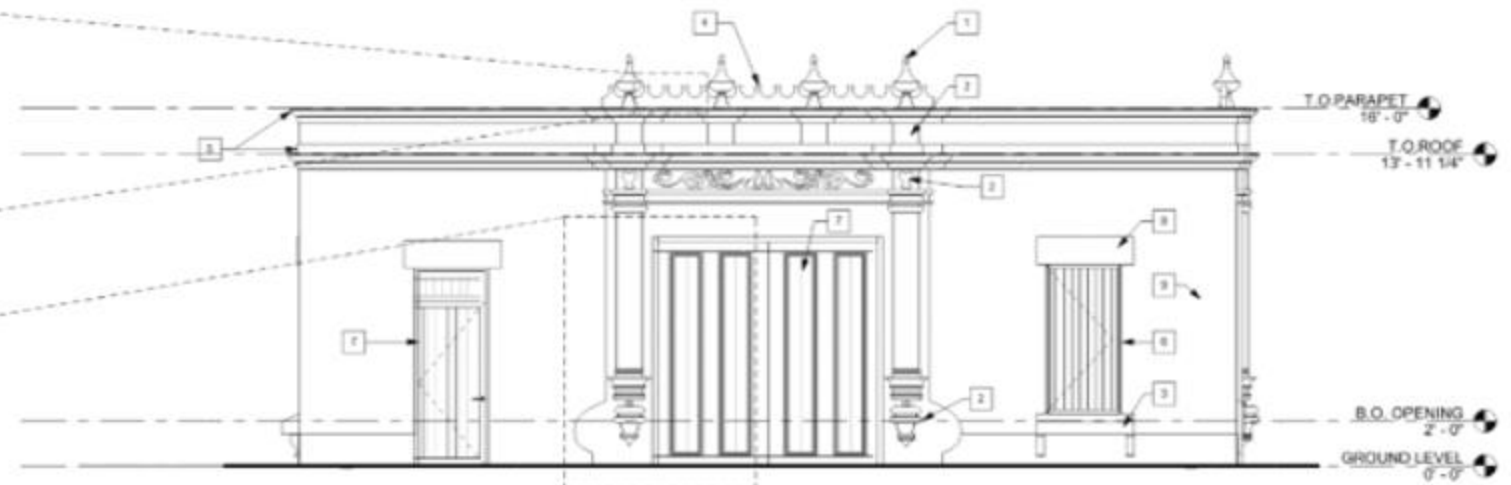
2



PROPOSED PLAN ELEVATIONS

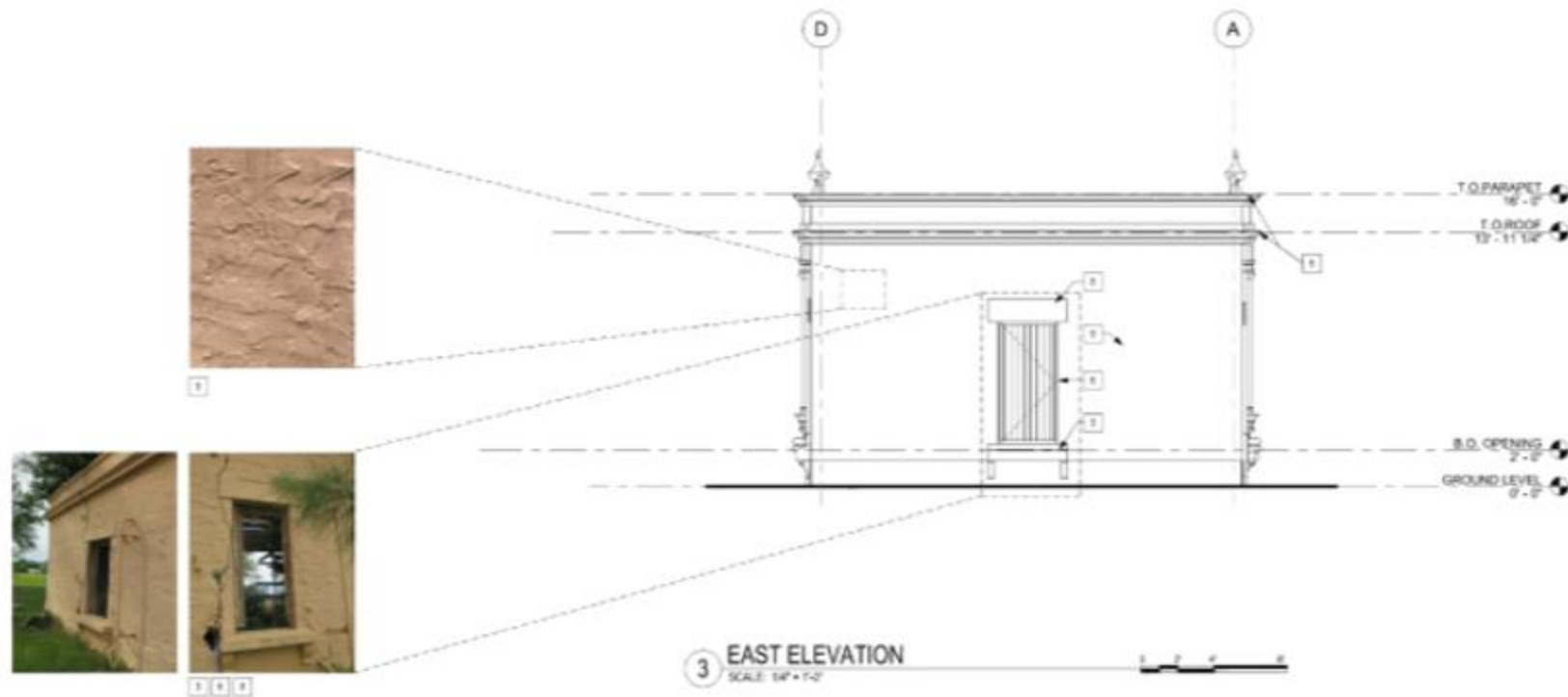
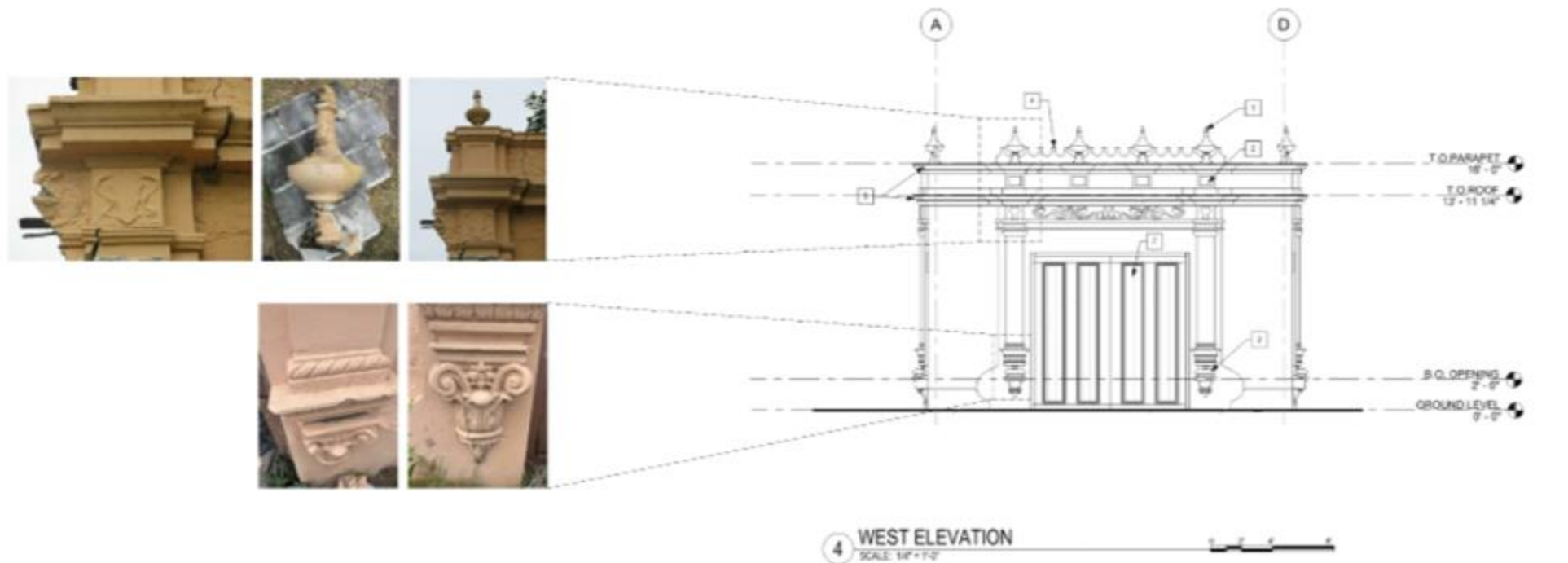


2 SOUTH ELEVATION
SCALE: 1/4" = 1'-0"



1 NORTH ELEVATION
SCALE: 1/4" = 1'-0"

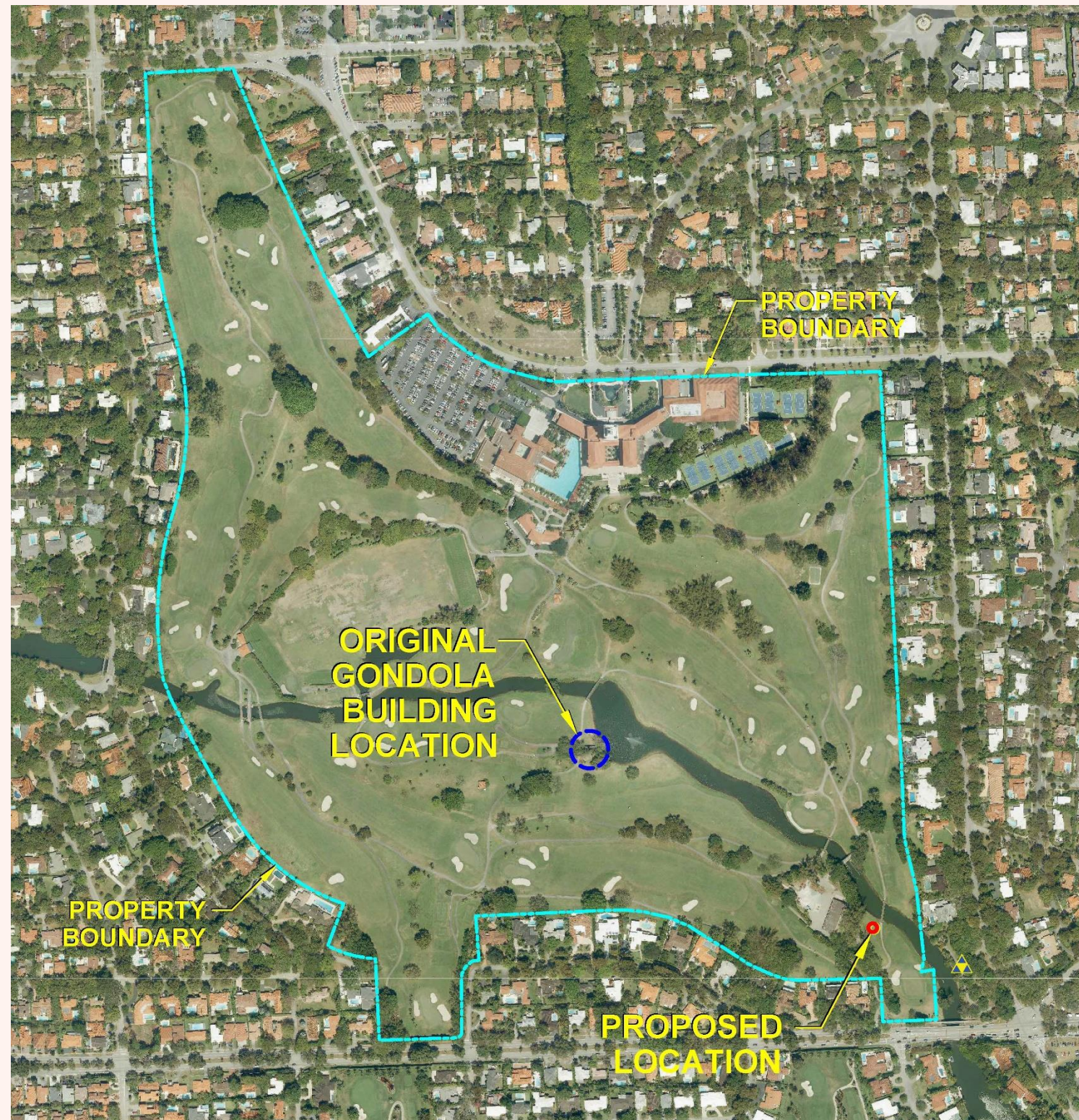
PROPOSED PLAN ELEVATIONS



ORIGINAL & NEW LOCATIONS

2

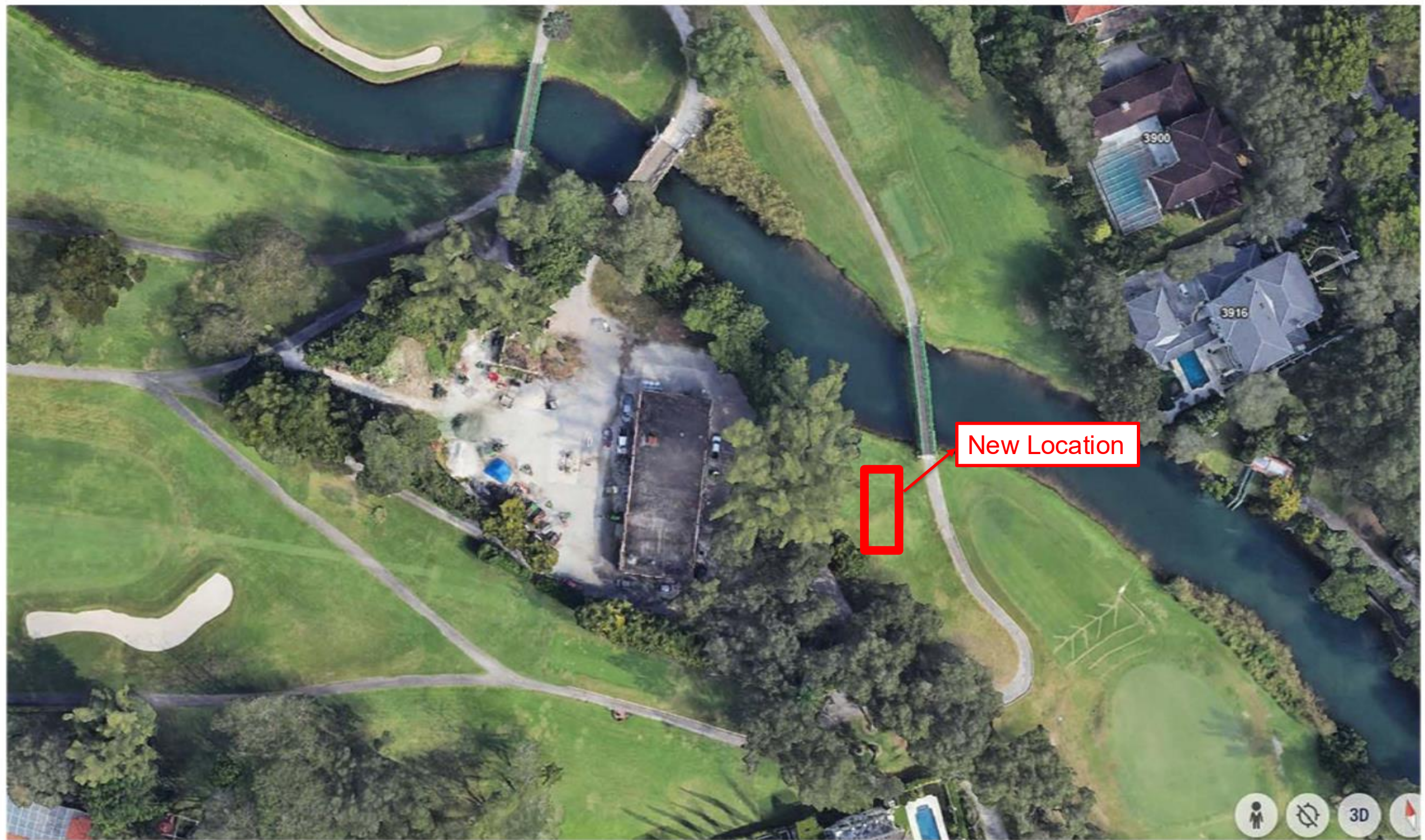
2



NEW LOCATION

2

2



New Location

PROPOSED LOCATION

2

2

- New location will be more accessible to the public from Bird Road.
- Decreased likelihood of disruption to golfing activities during and after construction.
- Increased safety of golf players, construction workers, and future patrons.
- Better access to construction equipment and personnel.
- Reduced risk of damage to a nationally recognized golf course due to construction activities.
- Biltmore Hotel operations supports the new location.
- Structure will be located by the canal as required by the State of Florida – Department of State – Division of Historical Resources (grantor). The Grantor has approved this site for the rebuilding of the Gondola Building.

Thank you!

Public Works Department: *Keeping the City Beautiful Yesterday, Today & Tomorrow*
PWDepartment@coralgables.com

CORAL
GABLES
THE CITY BEAUTIFUL