

BEST PRACTICES

FOR AESTHETIC REVIEW BY
THE CITY OF CORAL GABLES
BOARD OF ARCHITECTS

2016



CORAL GABLES FOUNDING ARCHITECTS AND DESIGNERS

W.C. BLISS – CIVIL ENGINEER

FRANK BUTTON – LANDSCAPE ARCHITECT

PHINEAS PAIST – SUPERVISING ARCHITECT

DENMAN FINK – ARTISTIC DIRECTOR

WALTER DEGARMO – ARCHITECT

HAROLD STEWARD – ARCHITECT

PAUL CHALFIN – ARCHITECT

RICHARD KIEHNEL – ARCHITECT

M. L. HAMPTON – ARCHITECT

H. GEORGE FINK – ARCHITECT

HAROLD HASTINGS MUNDY – ARCHITECT

L. D. BRUMM - ARCHITECT

TABLE OF CONTENTS



ZONING CODE	2
TOWN PLANNING	
URBAN DESIGN	
ARCHITECTURE	
LANDSCAPE	
SUSTAINABILITY	
BIBLIOGRAPHY	

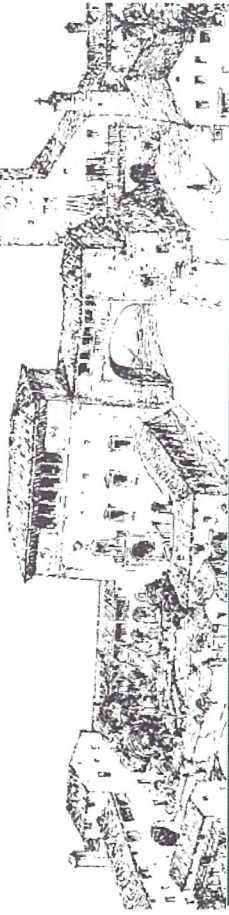
ARCHITECTURE
AND
APPLIED ARTS
IN
OLD SPAIN

LESSER KNOWN
ARCHITECTURE
OF SPAIN

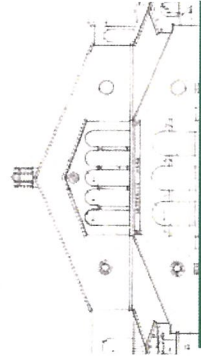
CORAL GABLES ZONING CODE



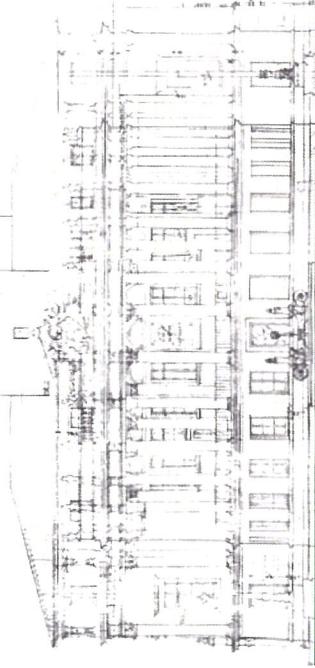
The buildings identified in Section 5-605 of the Zoning Code represent a range of urban contexts, building scales, and building functions that can serve as inspiration for a variety of Mediterranean architectural projects in modern times. The examples range from more Vernacular Mediterranean to more "Beaux Arts" Mediterranean.



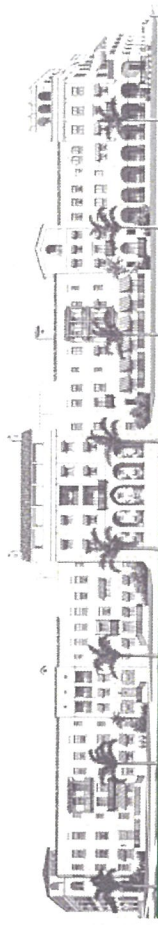
Douglas Entrance
800 Douglas



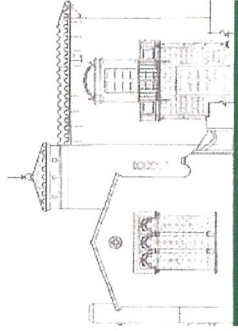
Coral Gables Elementary School
105 Mimorca



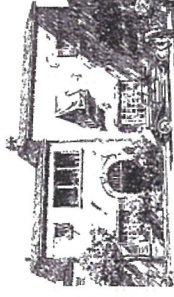
Coral Gables City Hall
405 Biltmore Way



San Sebastian Apartments
333 University Drive



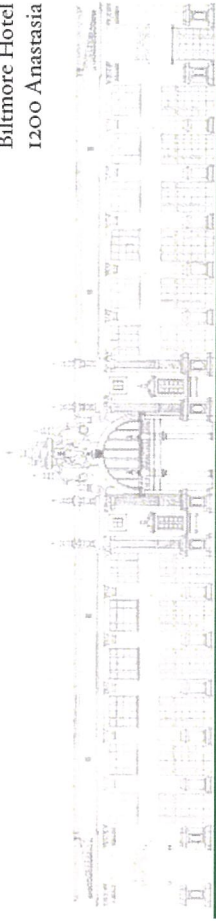
H. George Fink Offices
2506 Ponce



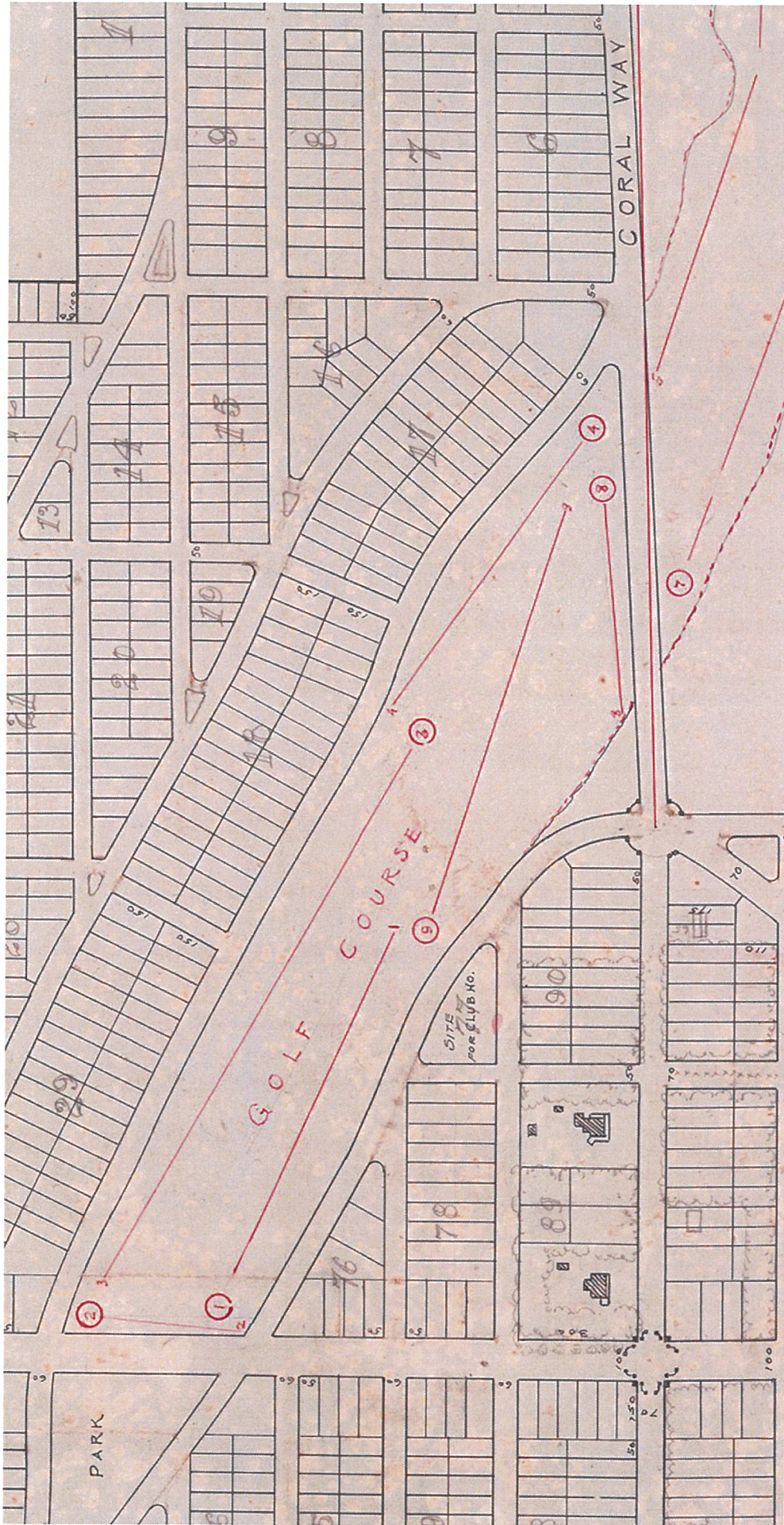
Granada Shops (Demolished)
2900 Ponce



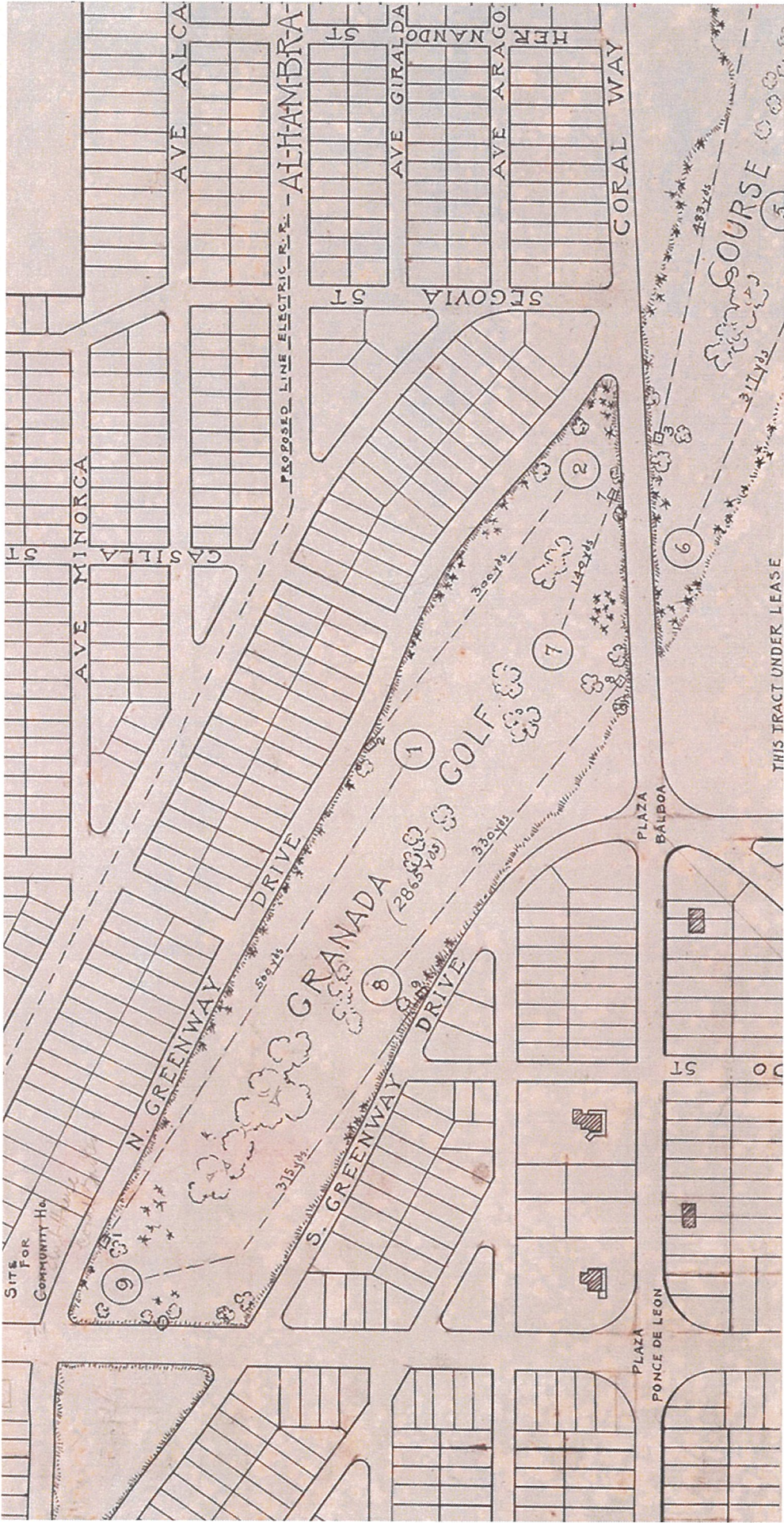
Biltmore Hotel
1200 Anastasia



The Colonnade Building
169 Miracle Mile



JULY 1921



OCTOBER 1921

TOWN PLANNING

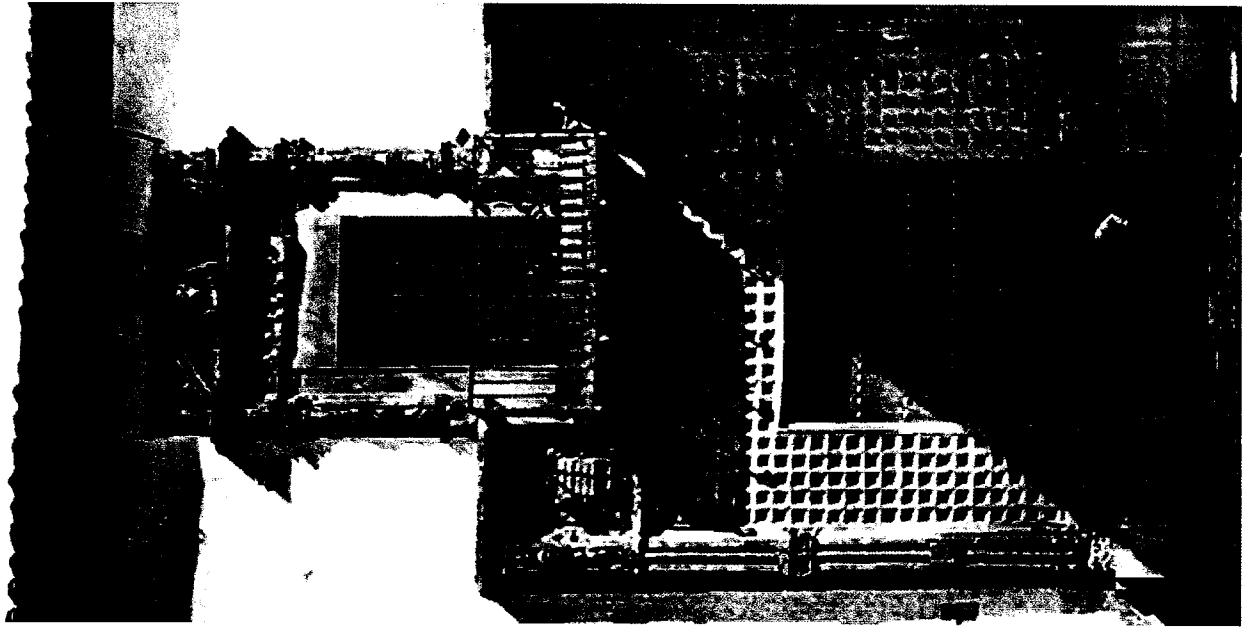
2

2

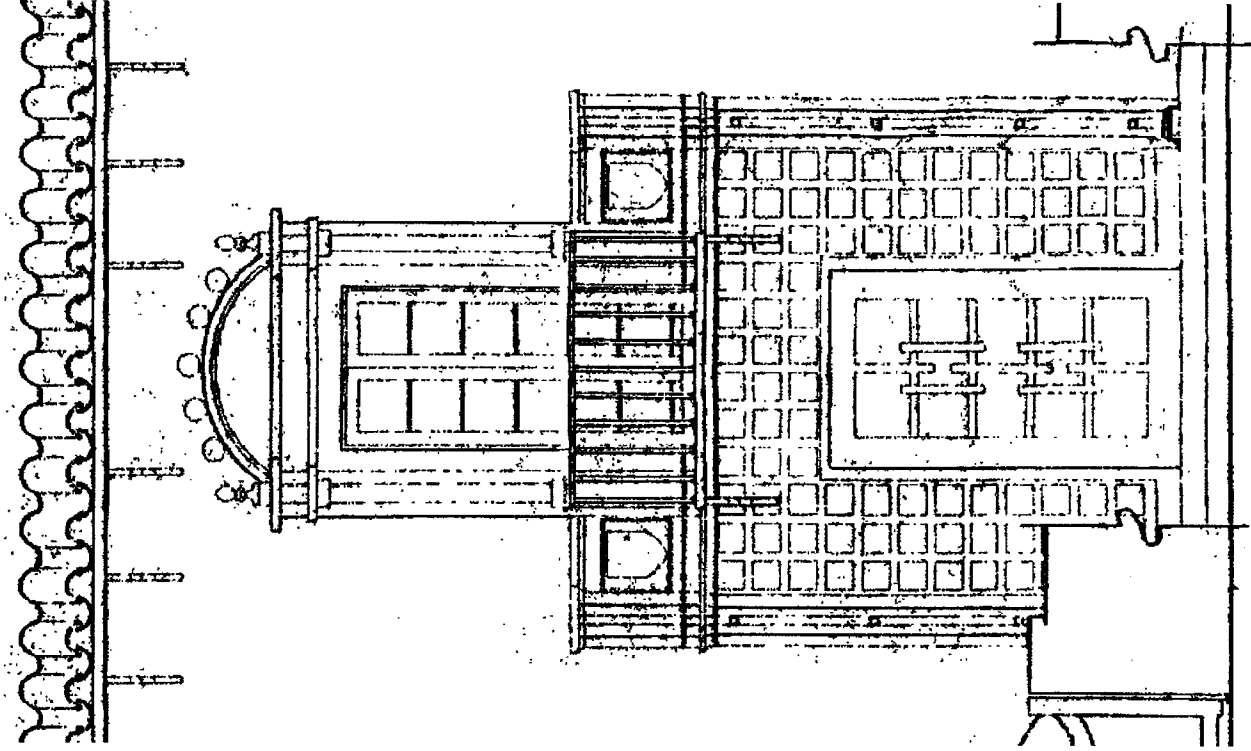
Site Specific Lot Facing Requirements

Facing requirements for certain streets

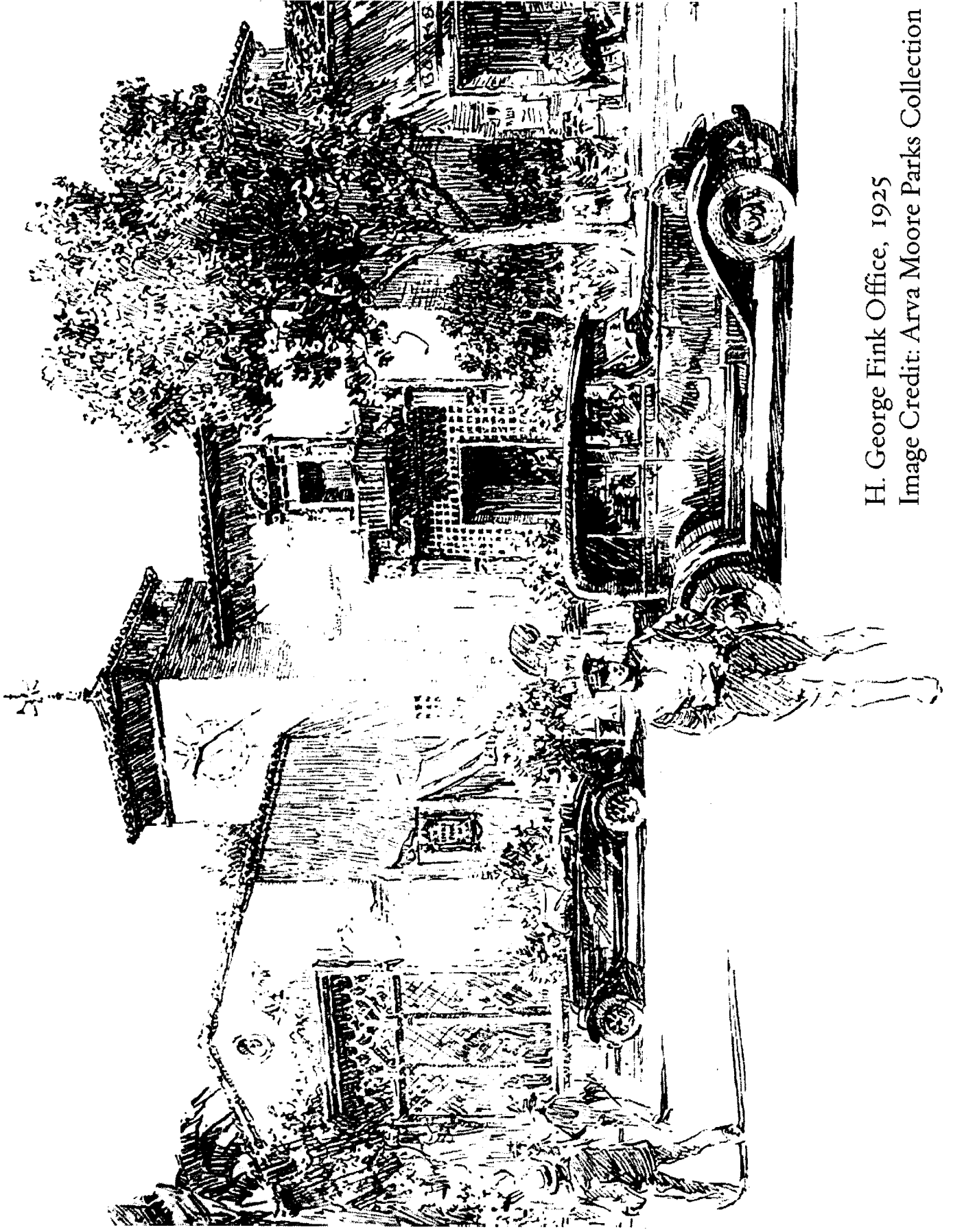




"Cordova, An Old Palace"
Lesser Known Architecture of Spain, 1925

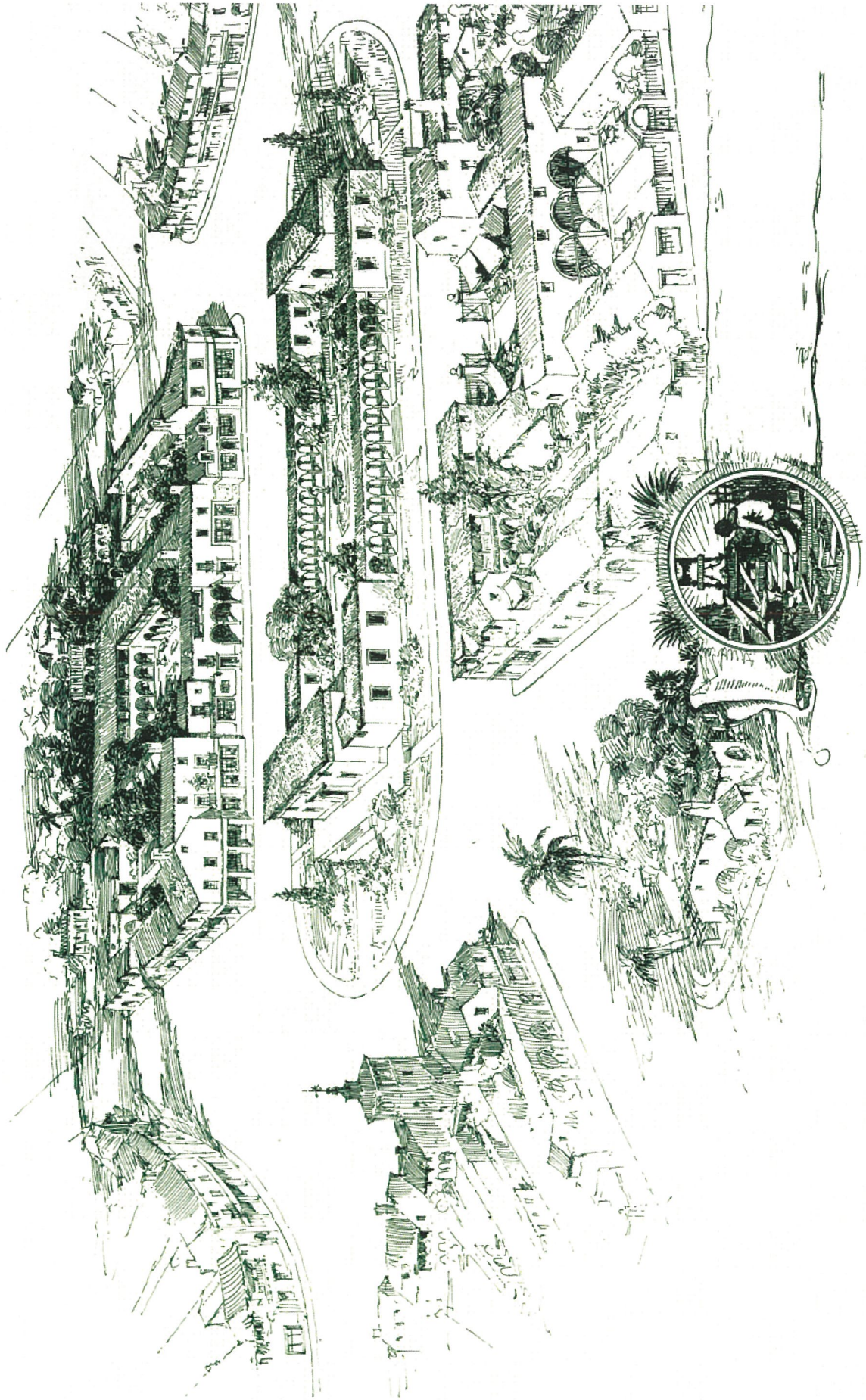


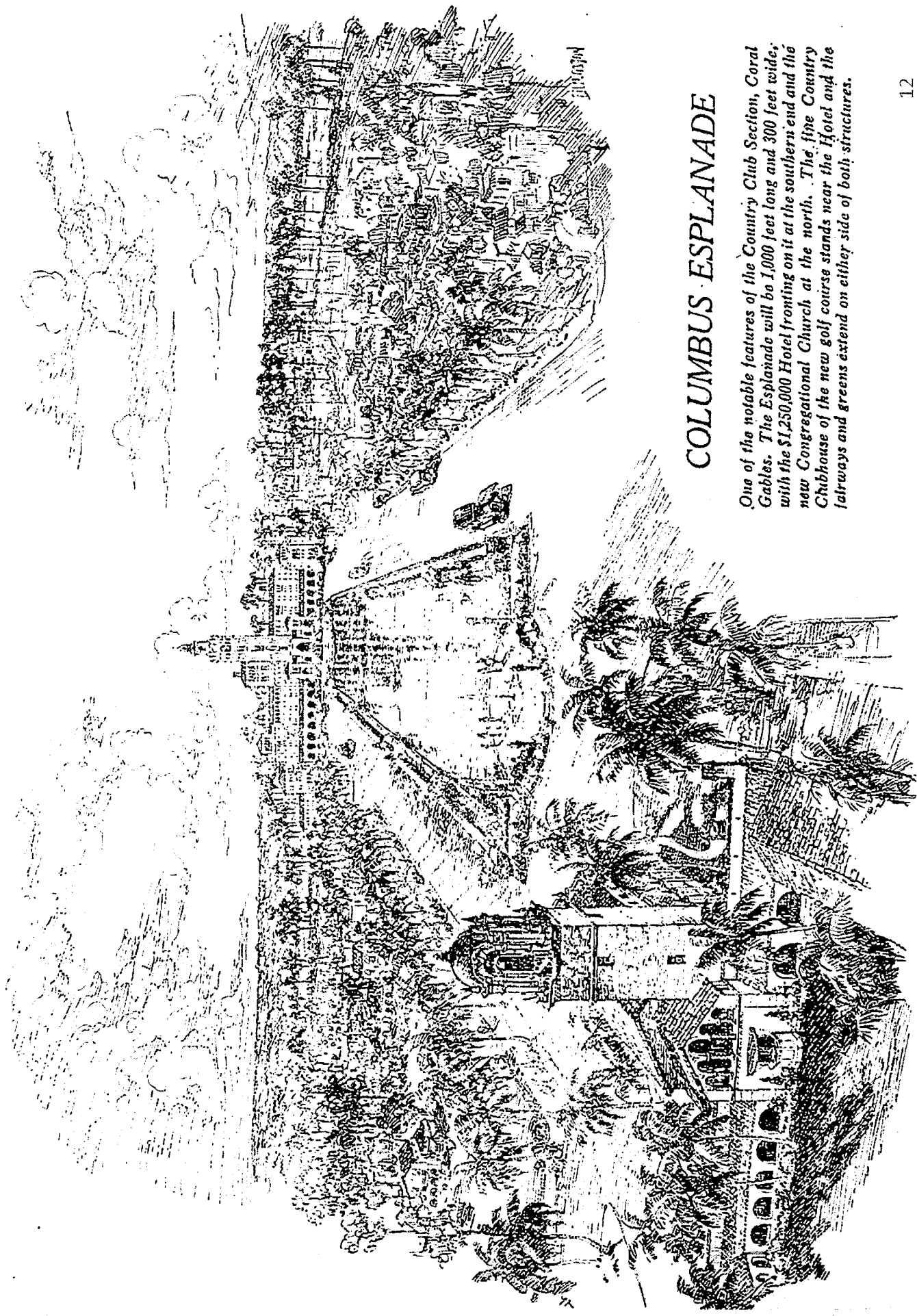
H. George Fink Office, 1925



H. George Fink Office, 1925
Image Credit: Arva Moore Parks Collection

URBAN DESIGN



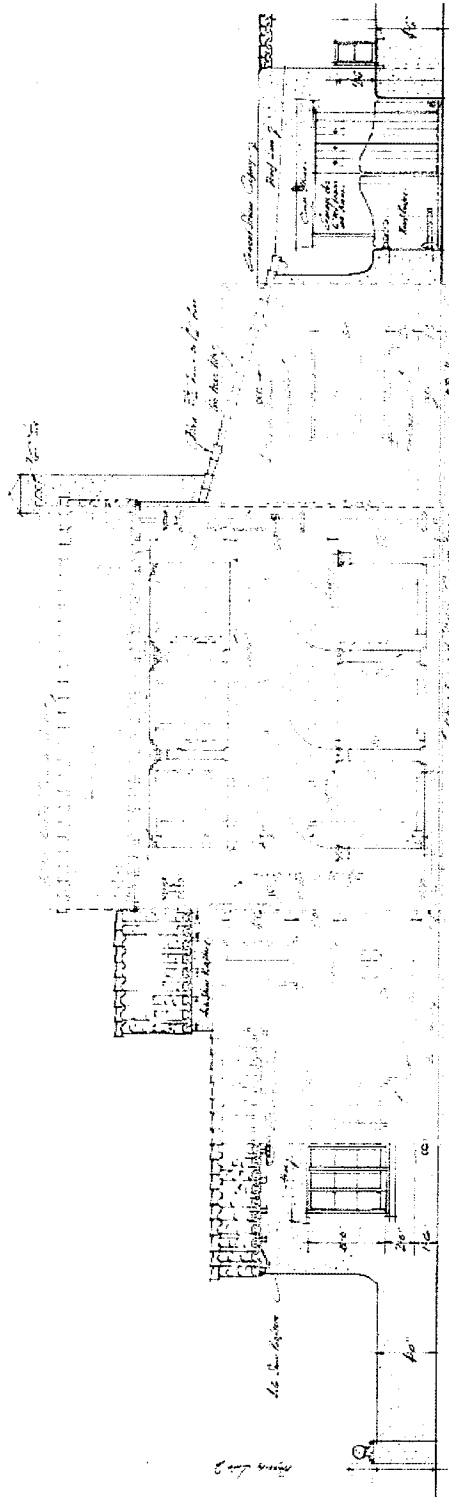


COLUMBUS ESPLANADE

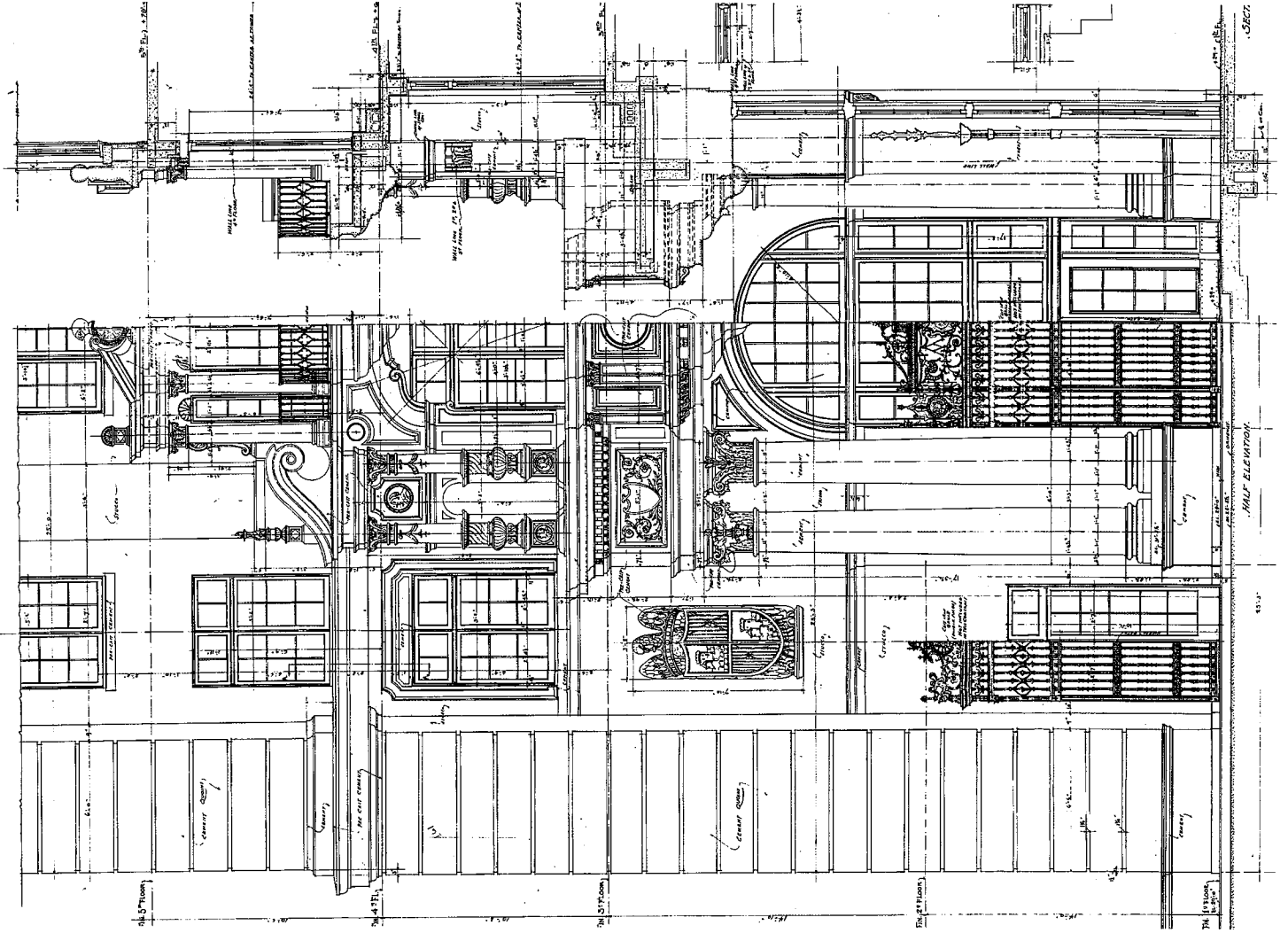
One of the notable features of the Country Club Section, Coral Gables. The Esplanade will be 1,000 feet long and 300 feet wide, with the \$1,250,000 Hotel fronting on it at the southern end and the new Congregational Church at the north. The fine Country Clubhouse of the new golf course stands near the Hotel and the fairways and greens extend on either side of both structures.

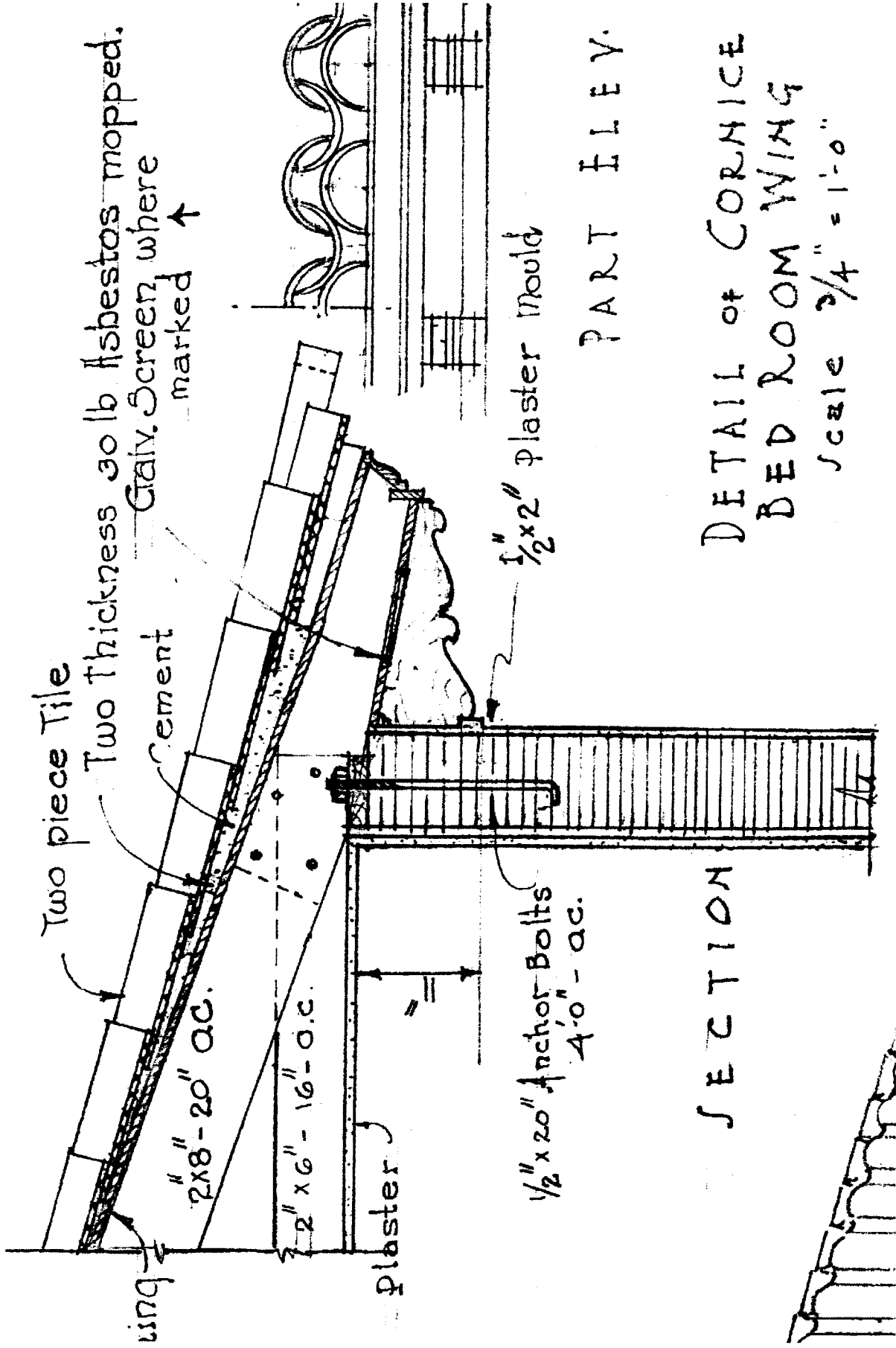


Walter DeGarmo Residence No. 615
 West Elevation Scale: 1/16" = 1'
 Image Credit: HistoryMiami



Walter DeGarmo Residence No. 615
 East Elevation Scale: 1/16" = 1'
 Image Credit: HistoryMiami



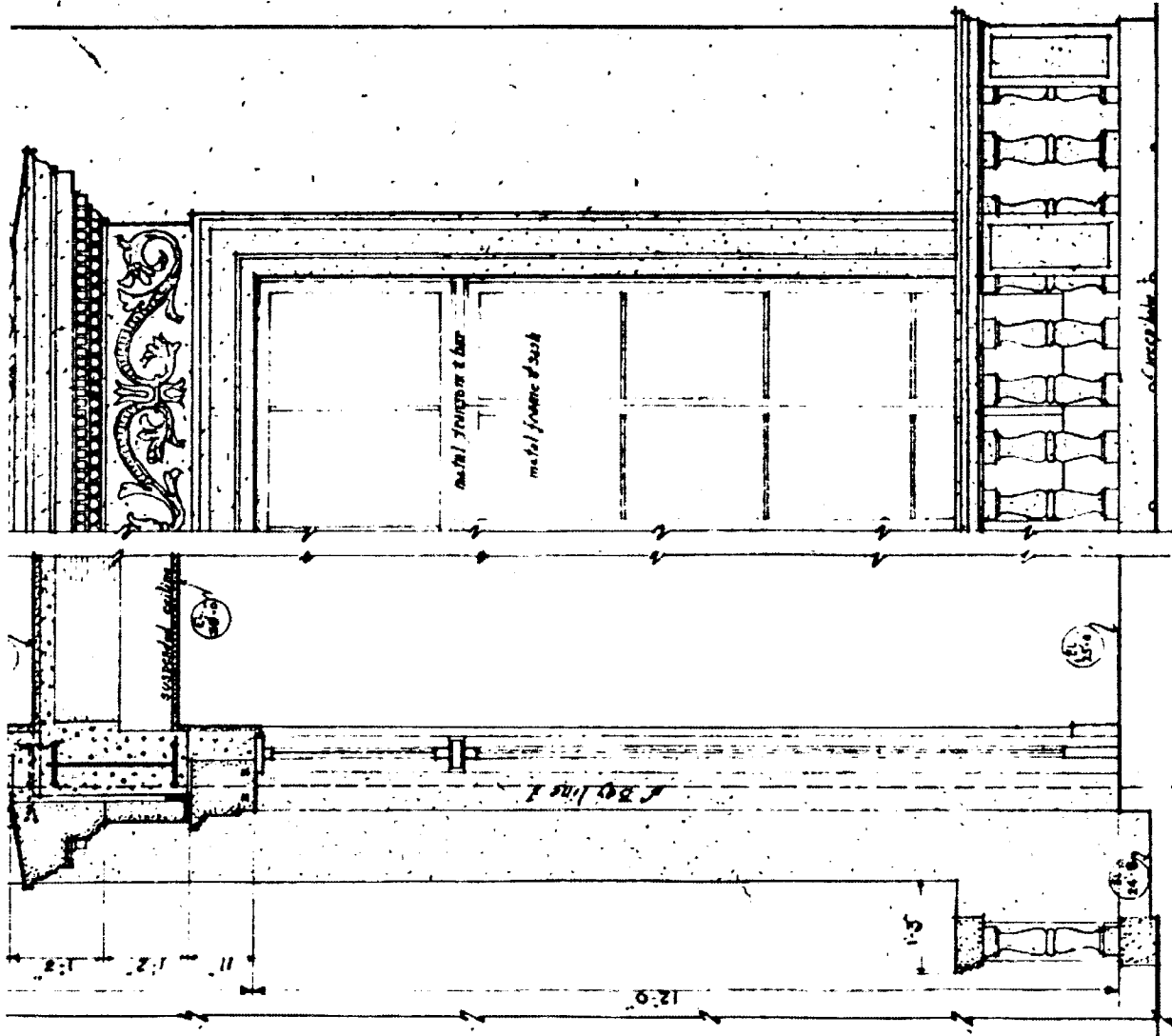


PART ELEV.

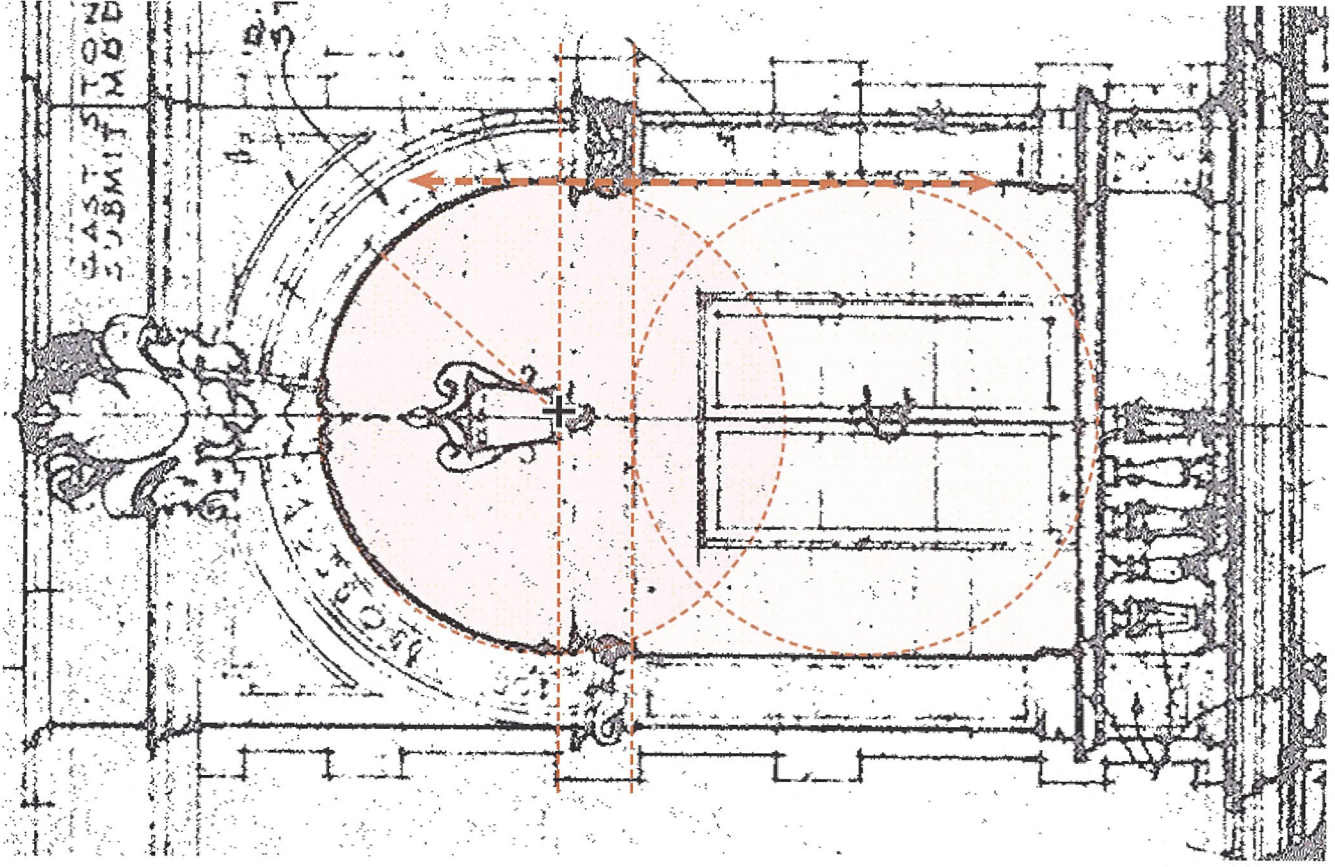
DETAIL of CORNICE
BED ROOM WING

Scale $\frac{3}{4}'' = 1'-0''$

Walter DeGarmo Residence No. 709
Detail of Cornice, Scale: $\frac{3}{4}'' = 1'$
Image Credit: HistoryMiami



SECTION P-P' ELEV. OF SECTION P-P'



Semi-Circular Arch

LANDSCAPE

2

The Suburb Beautiful—

By Mr. Frank M. Burton, F. A. S. L. A.

Note—Mr. Burton is a landscape architect of national reputation, a graduate of the University of Vermont with the degree of Civil Engineer, and a Fellow of the American Society of Landscape Architects. His work has been country-wide in scope, being in charge of landscape development in Glenview, Indian Hill and Ludlowville Golf Clubs, the most famous of golf links near Chicago in the great city of Lincoln Park and the Municipal Terraplane Hospital, Chicago; the magnificent 500-acre estate of Mrs. C. C. Corcoran, Chicago; the estate of St. Albans, Vt.; the Charles Dering estate, Miami, and numerous parks, estates and subdivisions of note throughout the country.

CORAL GABLES, with its immense acreage of gently rolling and undulating land, offers rare advantage for the best that the landscape architect can provide. Its broad vistas invite the development of a suburb of the most delightful parks, abundant natural areas and many other features which are possible under exceptional conditions. With splendid natural advantages it combines the most appropriate settings of tropical and subtropical foliage, permits the best of both worlds, and offers the most enjoyable and most ambitious projects of the country.

It has been my privilege for the past year to work all of these delightful elements into a harmonious scheme. In planning the extensive system of streets and areas all favorable conditions were utilized to the best advantage. At Southwood (Elgin Street (Tammam Trail) has been beautifully developed, with careful preservation of trees and full advantage taken of hills and hollows. This splendid boulevard, one hundred feet wide, which is the main thoroughfare of the suburb, is lined with a suburban flow for two miles through Coral Gables with delightful plazas at Coral Way and Avenue Sevilla, terminating in another imposing gateway to be built with Coconut Grove entrance on Bird Road.

The first half mile of Granada Boulevard forms an excellent example of the best that can be done. Great variety of rubber, acacia, sycamore, cypress, palm, and cumbay trees, making an informal botanical collection of unrivaled beauty along the parkway, and setting off the broad boulevard most effectively. The boulevard is bordered by a wide sidewalk type, 210 feet in width, offering a most cordial welcome to the visitor.

Another of these most excellent underways which add to the evening beauty of Coral Gables is Alhambra Circle. One hundred feet wide, with a central strip of lawn, it offers a rare opportunity to be built on the property, that fine boulevard, centrally the entire length of Coral Gables. Perhaps no better idea of the size of this development can be given than the mere statement of fact that Alhambra Circle is three and one-half miles in length.

On all of the principal boulevards of Coral Gables have been laid out delightful parks, plazas and rest spots, open-air to live areas in acres, that break the vista of the avian and provide the most charming positions for landscape work of the most effective kind.

A large portion of Coral Gables is now covered with tropical fruit trees, presenting a delightful background for the extensive improvements carried out in parks, ways and boulevards. Whenever possible fruit trees in parkways between sidewalks and areas have been planted, and the same care has been given to the walks through variable flower beds with delightful fruit.

The two golf courses offer advantages of other kinds that will appeal strongly to future residents of Coral Gables. These are bordered with native palms, cypresses, and other tropical trees, and offer a most attractive and delightful surroundings for golf. The nine-hole course is well under way now, and is 2,000 yards in length, with a 500-yard hole which will be a test for even the par golfer. The 18-hole course will have three holes of 600, 500, and 400 yards, with good fairways, grass greens and traps and hazards of the most modern kind. Imposing club

houses with every convenience for members are part of the work planned for the delightful social life at Coral Gables.

The Golf Club house at Coconut Grove and Biscayne Yard grounds will also be a recreation center for all the residents of Coral Gables, with tennis courts and other amusement features impressively fitted with the happiness and enjoyment of all well-to-do country club members.

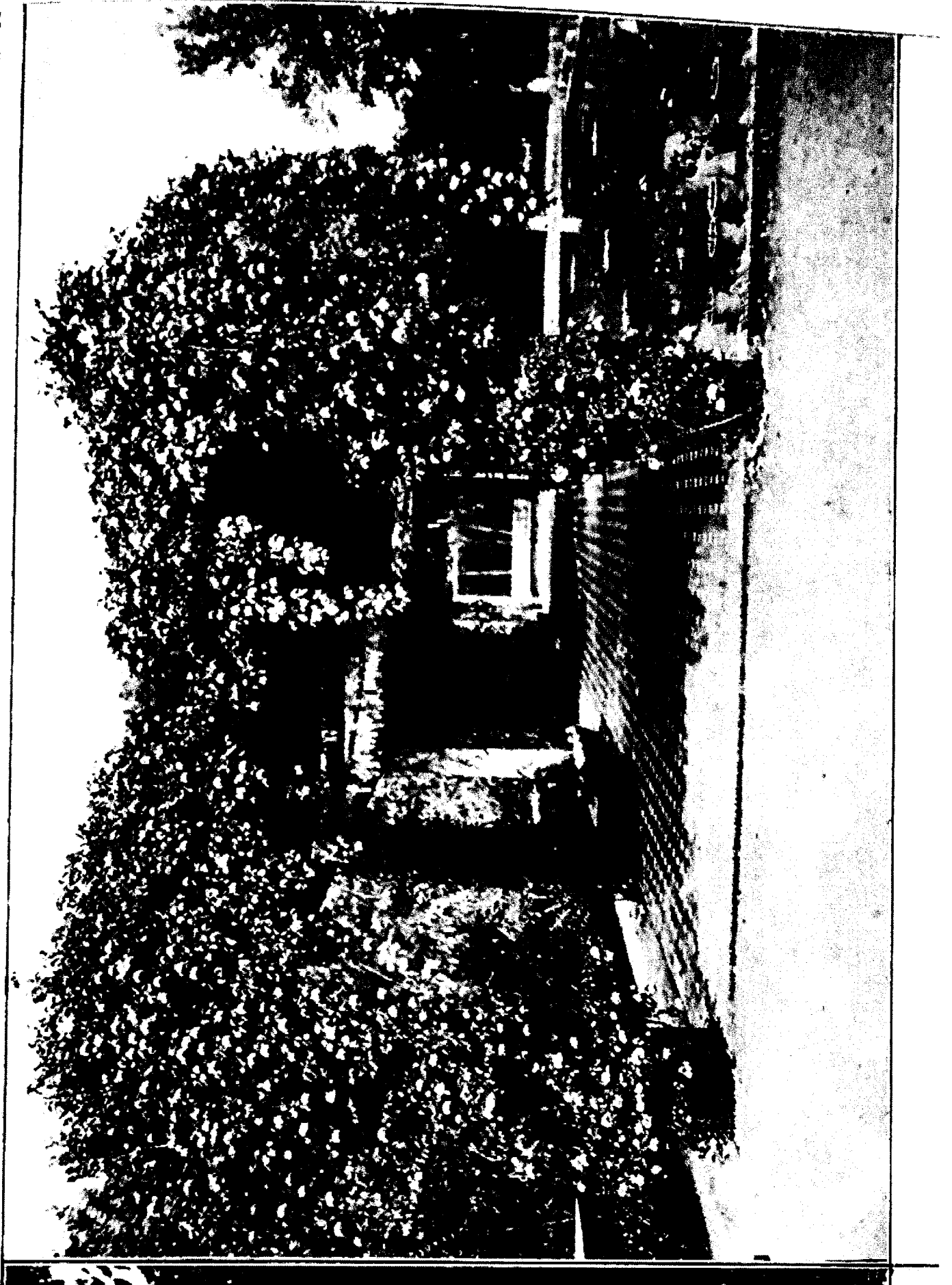
Large plots have been set aside in prominent locations for churches, schools, library and other community centers. And even the business section on the bay, Alhambra, has been made attractive by perfect landscaping and lighting treatment.

The splendid soil conditions at Coral Gables permit of the most varied gardening operations. The famous plantations appeared as successfully here for the first time in the country. The soil conditions of the land, while the plants of the Florida peninsula varied than that of any other part of the United States, will be utilized in the utmost to add to the attractiveness of the suburb. The most interesting and most pleasing uses of plants and boulevards and make most pleasing use of the soil.

From even the most conservative viewpoint, Coral Gables offers possibilities for beauty that make it distinctive among developments of this kind. Working boulevards, circles, the entire street, diagonal boulevards, and other features, all of which are planned to be made of stone, oak and oak delight the eye on every side, and with the extensive planting of cypress, rubber, royal palm, greville, palm, cumbay, hibiscus, clematis and other plants, with the addition of the most beautiful and most interesting work of art, Coral Gables will present a beautiful development unsurpassed for ideal living conditions.

This is the second of a most interesting series of articles prepared and written especially by the landscape architect who is making CORAL GABLES one of the most beautiful suburbs in the world. The next in the series will be published in the next issue of the Gardeners' Magazine. The Gardeners' Magazine will be published in the next issue of the Gardeners' Magazine. It will be the most extraordinary of the year!

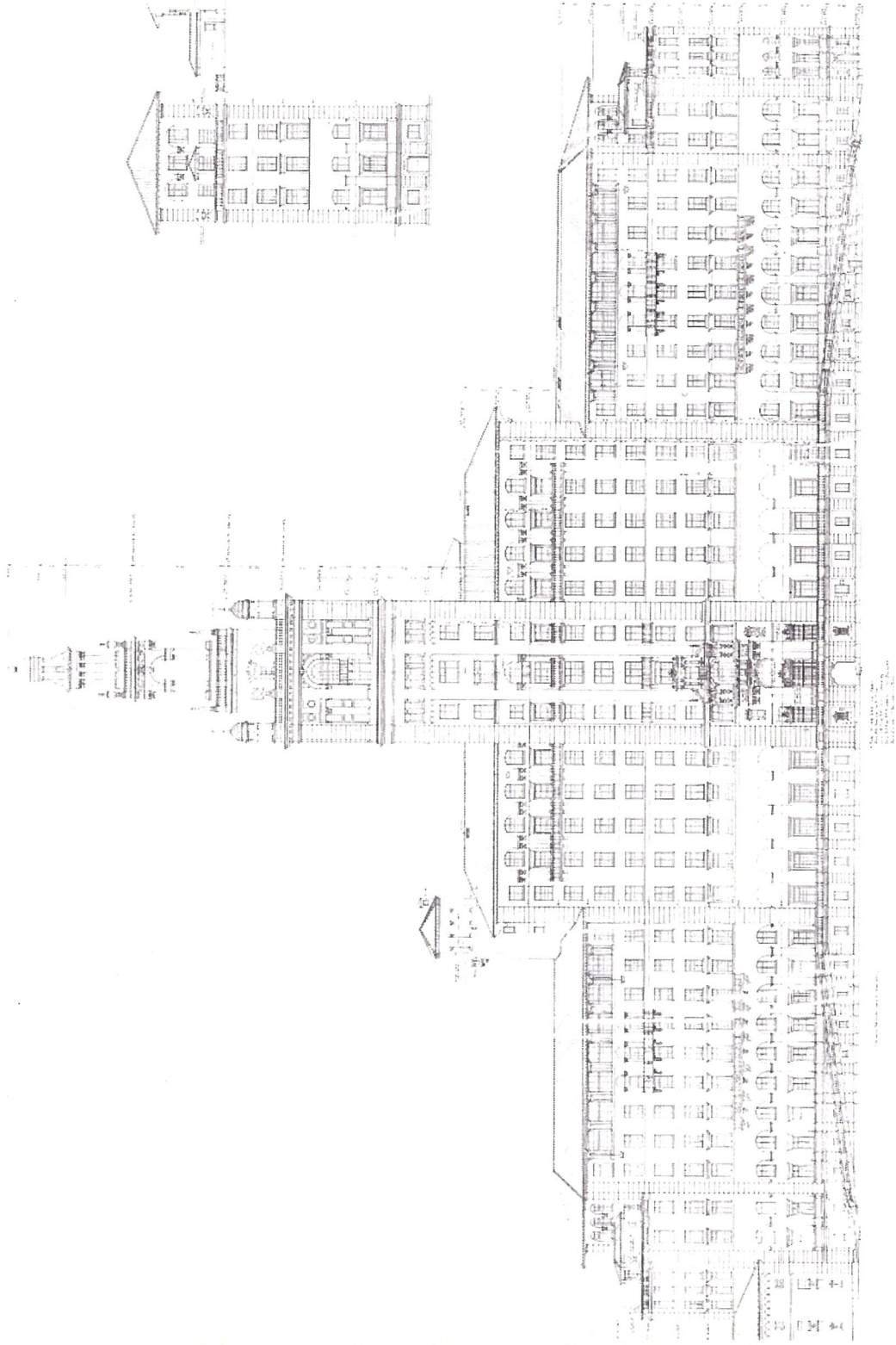
DAMMERS & GILLETTE and HARRY A. BURTON
SELLING AGENTS





SUSTAINABILITY

2



SUSTAINABILITY

2

LEED CRITERIA

- OPEN SPACE
- BUILDING PRODUCT DISCLOSURE AND OPTIMIZATION
- ENHANCED INDOOR AIR QUALITY STRATEGIES
(OPERABLE WINDOWS / CROSS VENTILATION)
- LOW-EMITTING MATERIALS
- THERMAL COMFORT (SHADED COURTYARDS, ARCADES)
- INTERIOR LIGHTING (LARGE WINDOWS, FLOOR PLATE)
- DAYLIGHT
- QUALITY VIEWS
- WALKABLE PROJECT SITE
- DESIGN FOR ACTIVE OCCUPANTS (STAIRCASES)

BIBLIOGRAPHY

Lesser Known Architecture of Spain, Volume 1 and 2, 1925 and 1926
(Library of Walter C. DeGarmo, Harold D. Steward, and R. A. Taylor)

Availability:

- *City of Coral Gables Planning and Zoning Division*
- *University of Miami Richter Library, 5th Floor Oversize: NA1301 .Y4 1925 v.1*

The Renaissance Architecture of Central and Northern Spain: A Collection of Photographs and Measured Drawings, 1920
(Library of Harold D. Steward, Architect)

Availability:

- *City of Coral Gables Planning and Zoning Division*
- *University of Miami Architecture Library, Oversize, NA565.W5*
- *University of Miami Richter 5th Floor Oversize, NA565.W5 c.2*
- *Barry University Monsignor William Barry Memorial Library Catalog, Main Oversized Books, NA565.W627R*

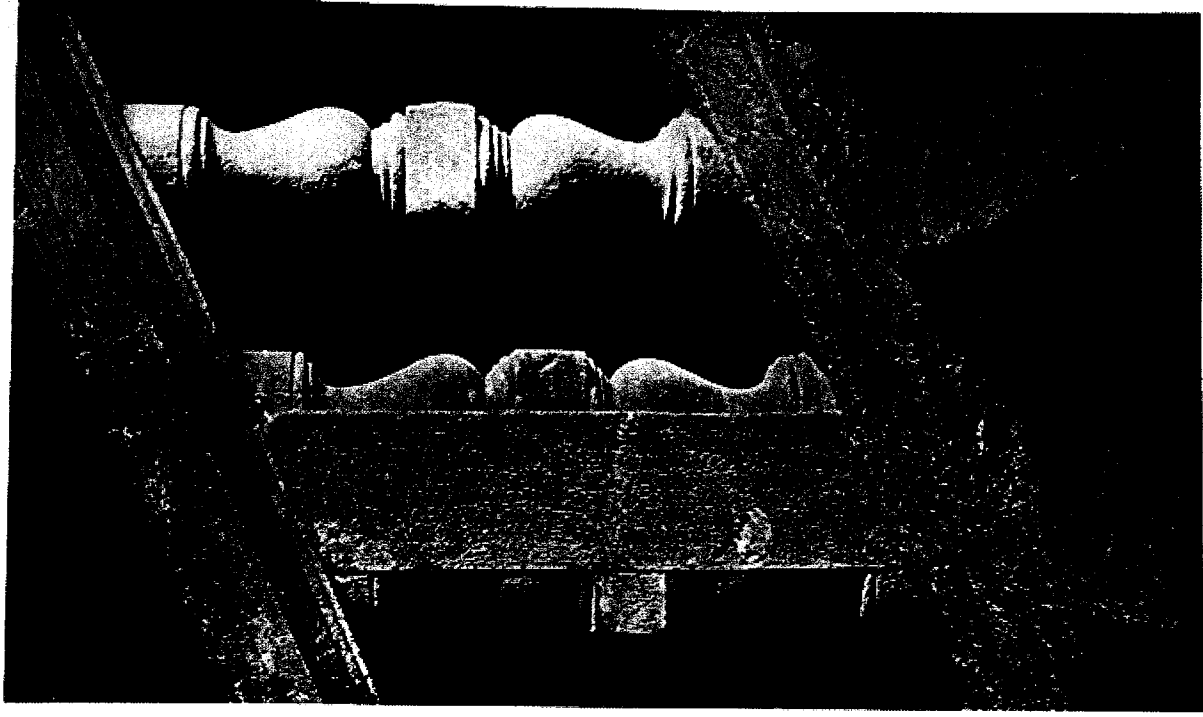
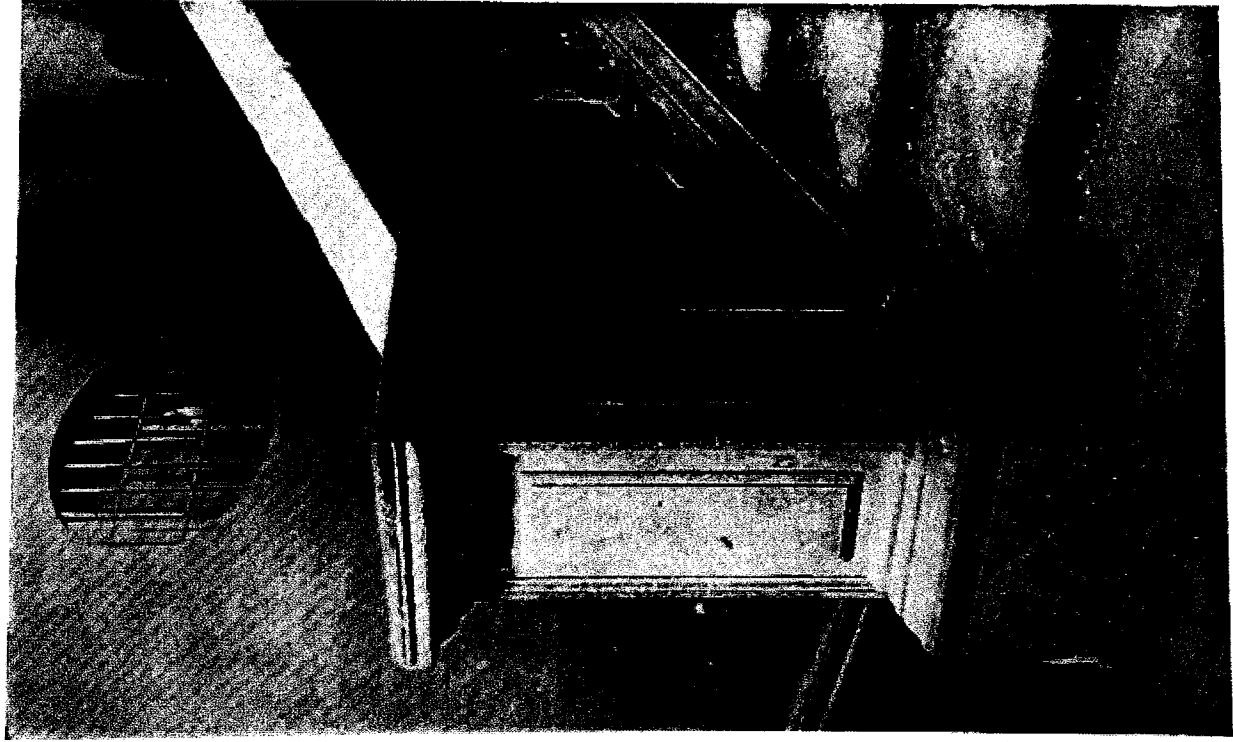
Arte y Decoracion en Espana, Tomo I – X, 1917 – 1926

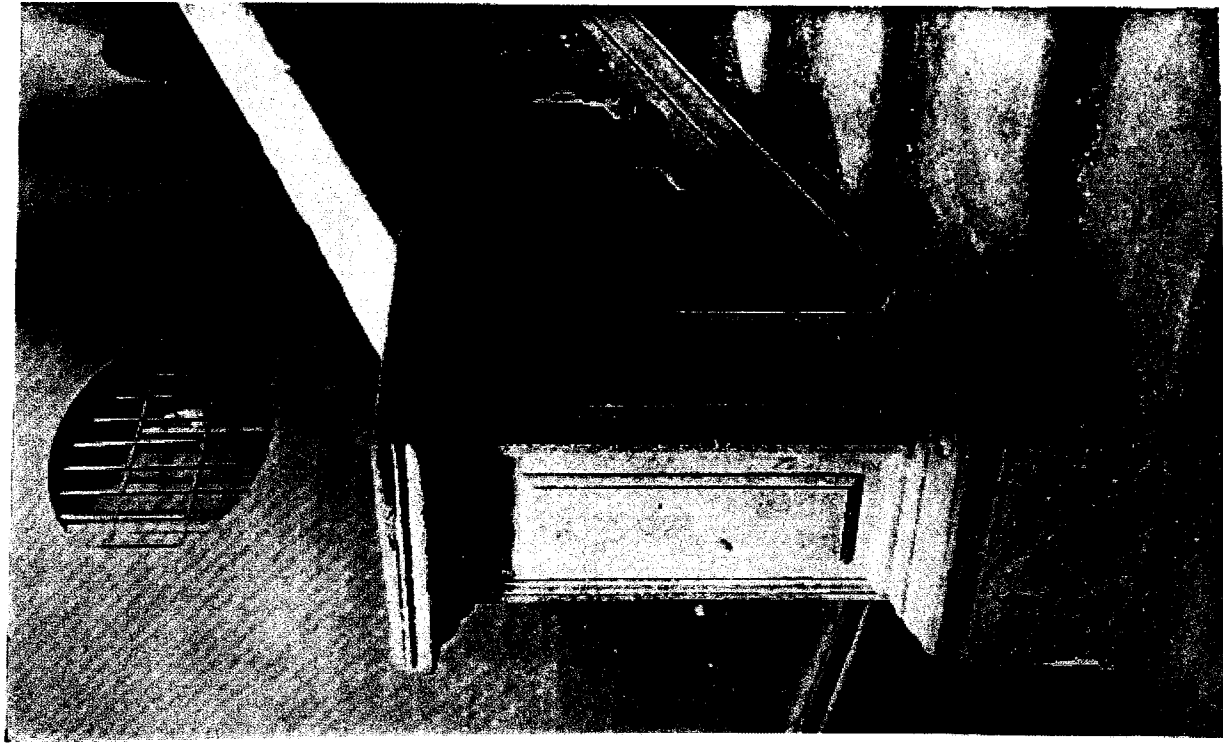
(Library of Walter C. DeGarmo, Harold D. Steward, and R. A. Taylor)

Availability:

- *University of Miami Richter Library 5th Floor Oversize N7101.A12*
- *University of Miami Architecture Library Special Collection N7101.A12*
- *Florida International University Green Library Special Collection, 4th Floor N7101.A12*

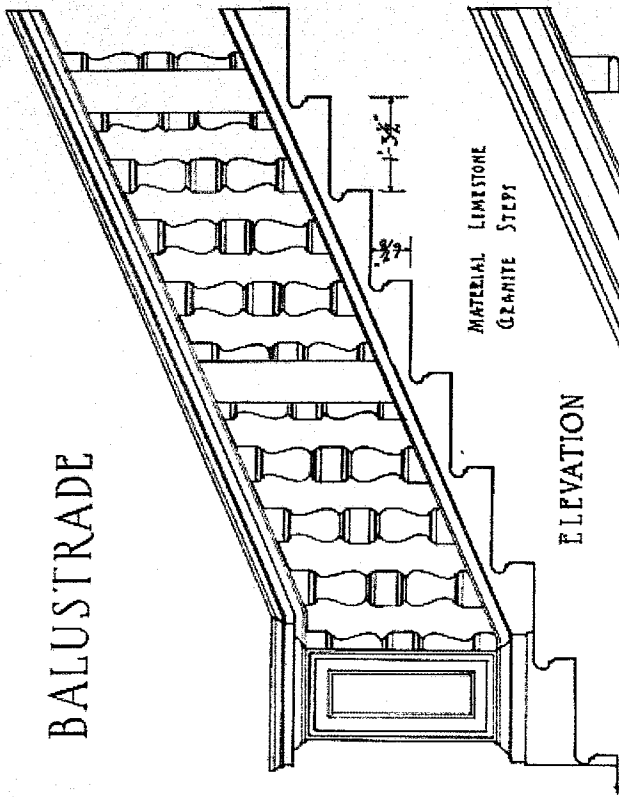
BALUSTRADES



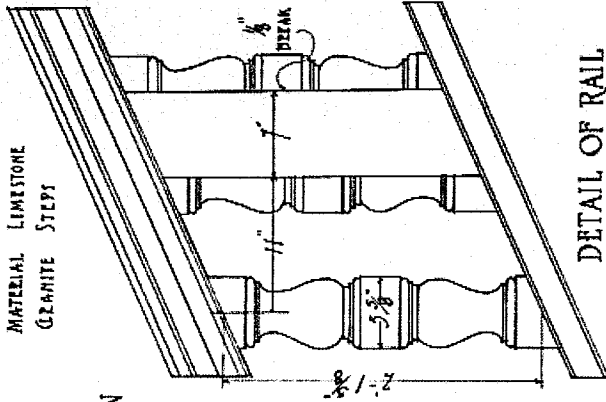


STAIRWAY, ARCHBISHOP'S

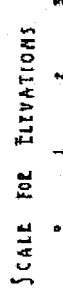
BALUSTRADE



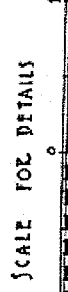
ELEVATION



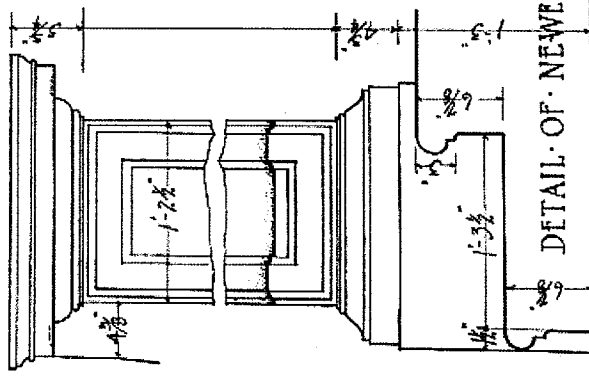
DETAIL OF RAIL



SCALE FOR ELEVATIONS



SCALE FOR DETAILS

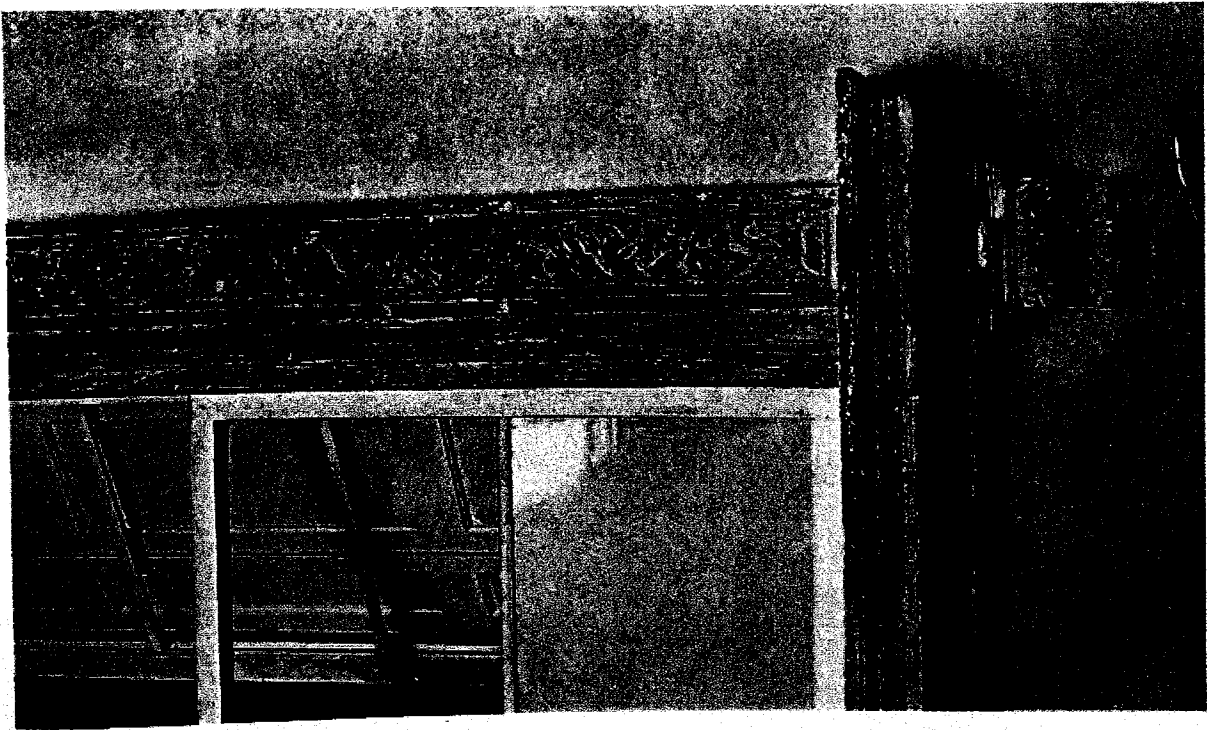
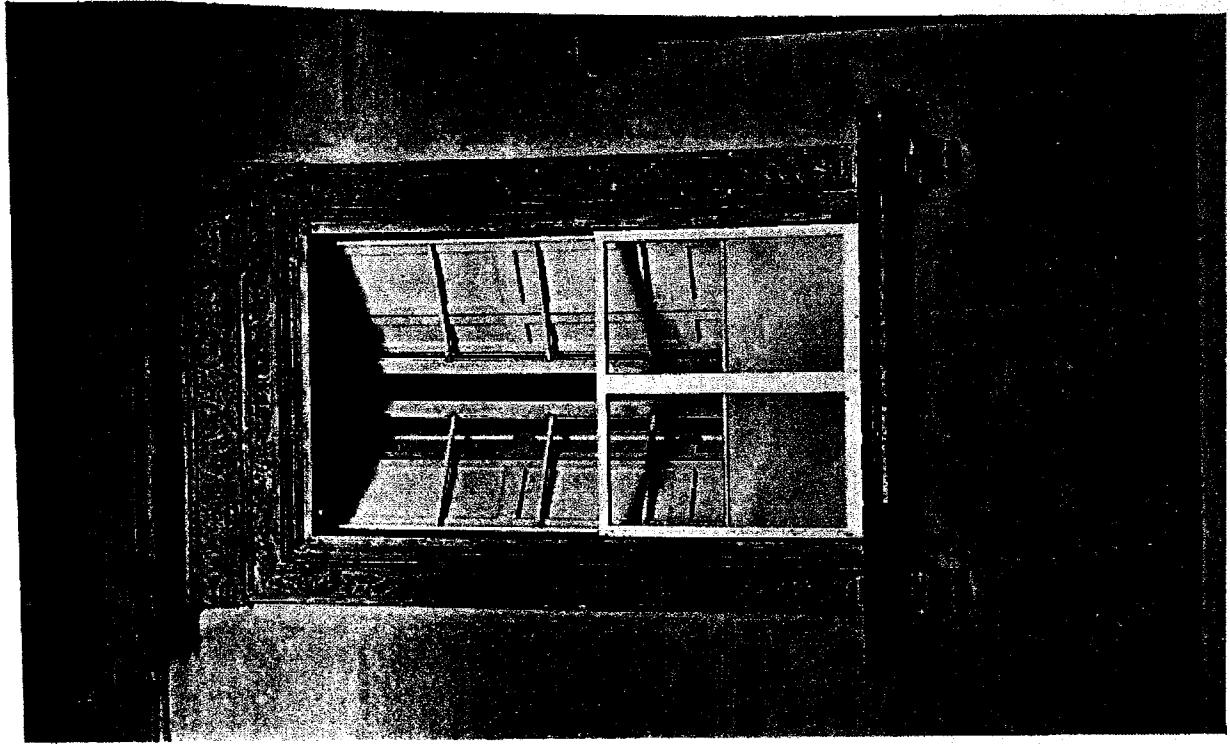


DETAIL OF NEWEL

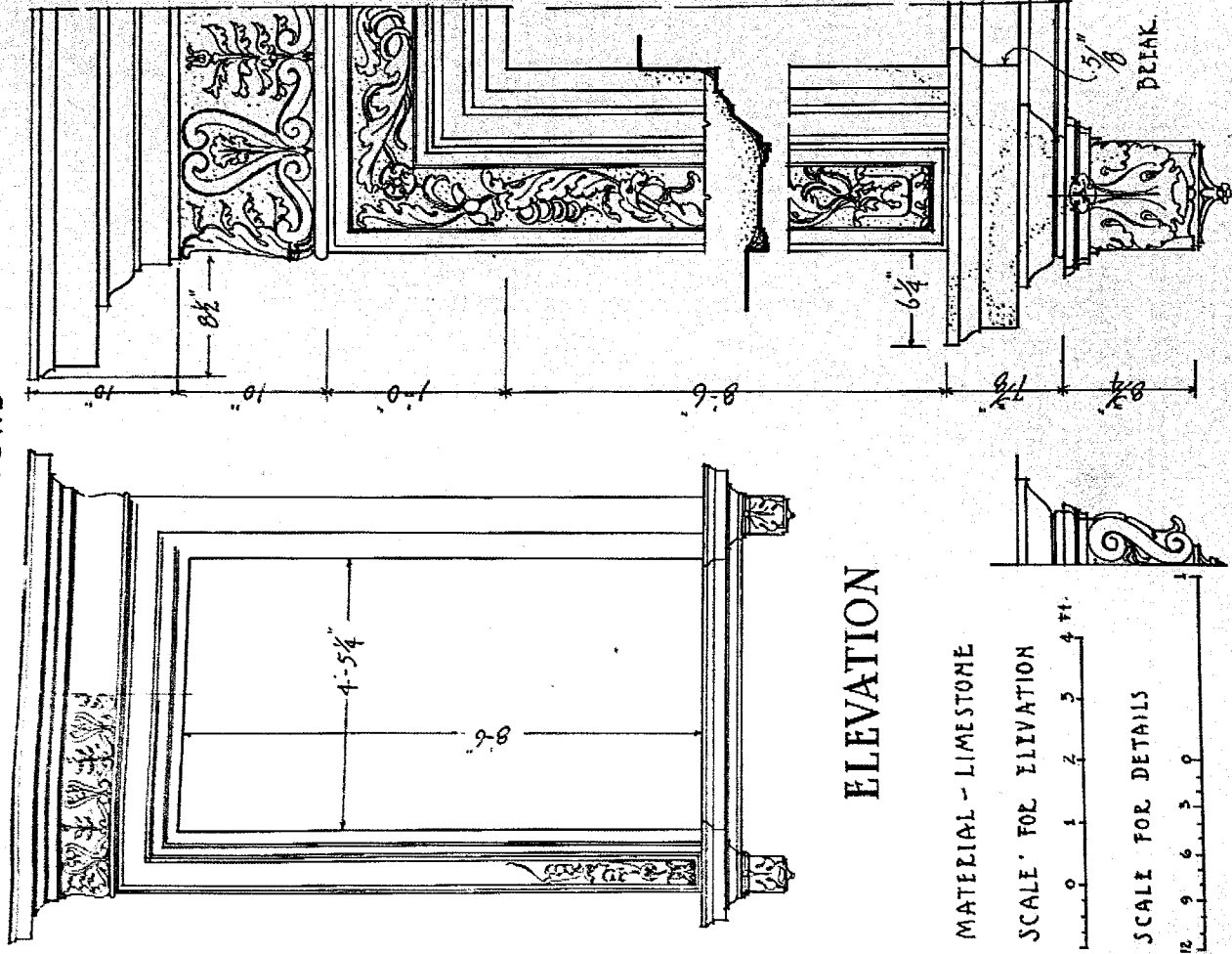
STAIRWAY, ARCHBISHOP'S PALACE, MILAN

WINDOWS

Northern Italian Details

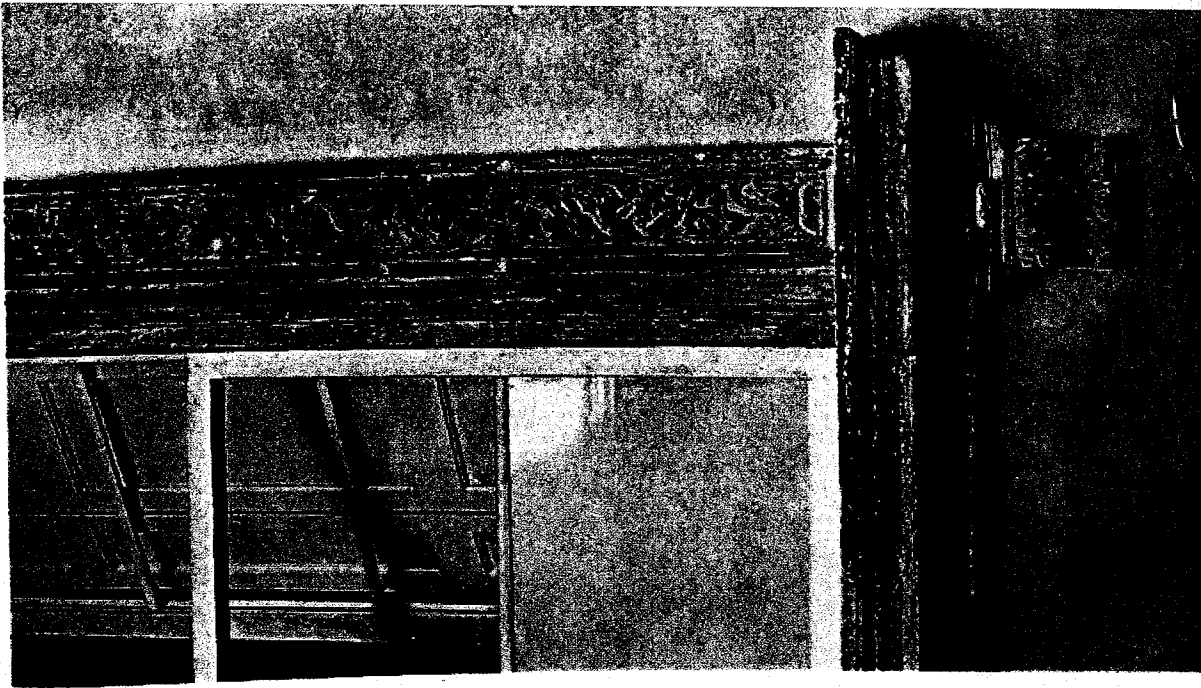


WINDOW, PALAZZO BUONCOMPAGNI, BOLOGNA

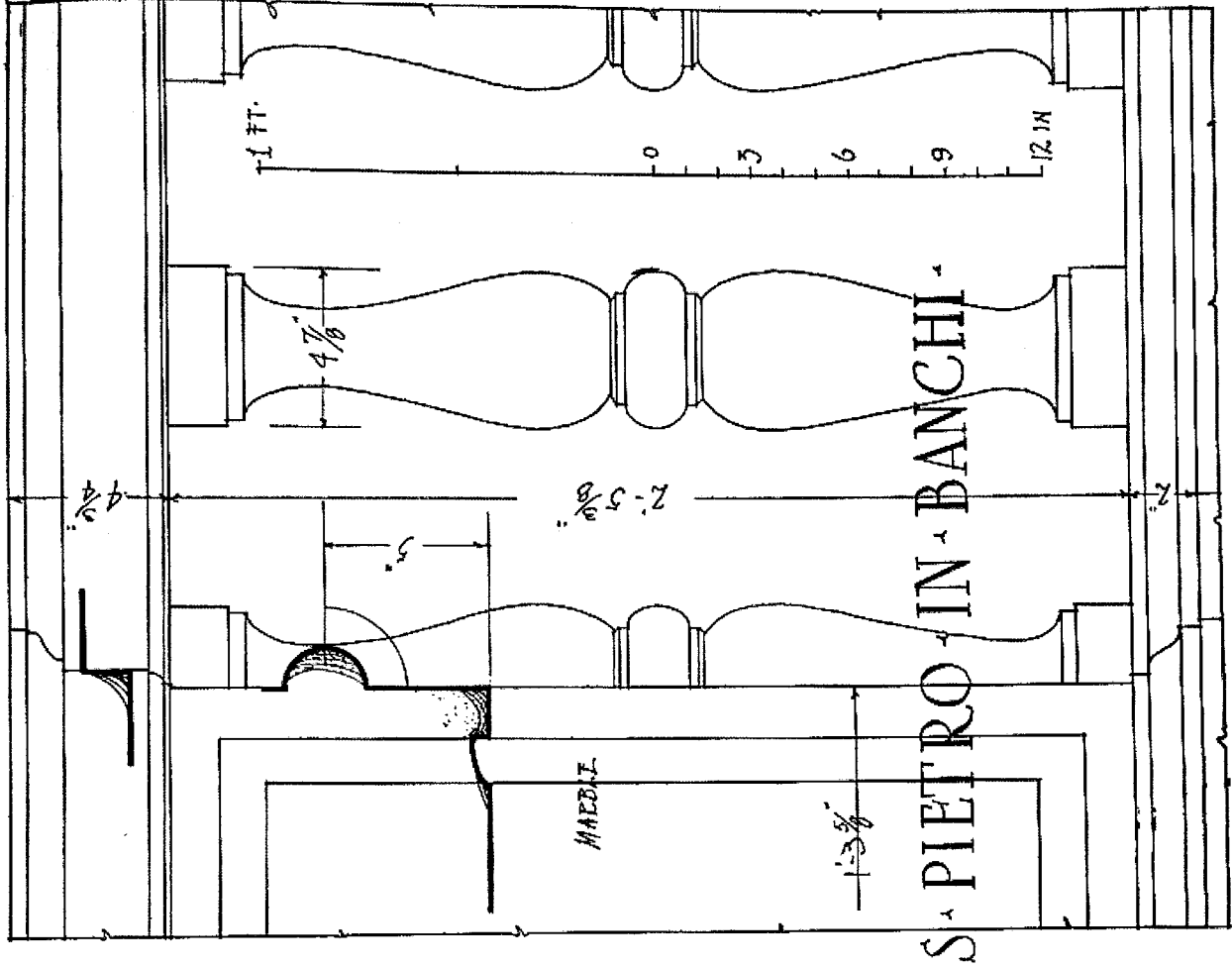
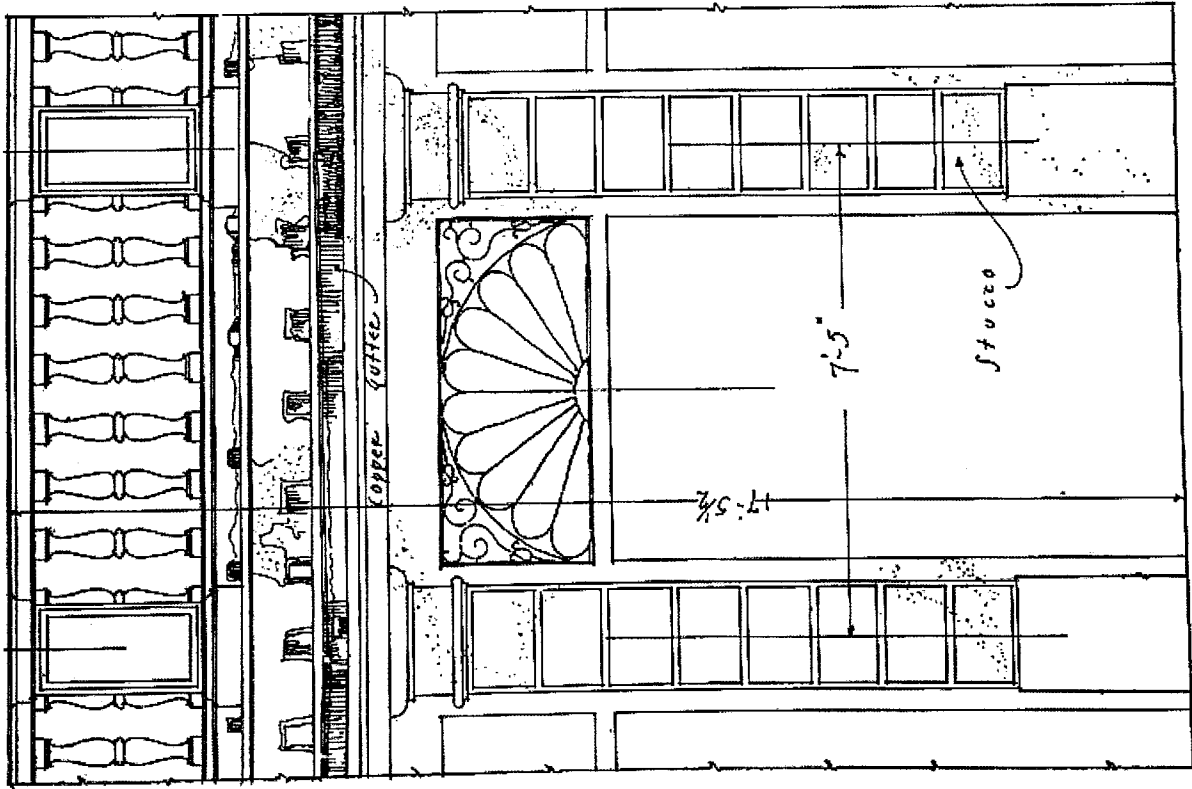


ELEVATION

WINDOW, PALAZZO BUONCOMPAGNI, BOLOGNA



WINDOW, PALA...



SCALE 1 2 3 4 5 6 7 8

BALUSTRADE, S. PIETRO IN BANCHI, GENOVA

S. PIETRO IN BANCHI

MARBLE

1 FT. 0 3 6 9 12 IN

4 7/8

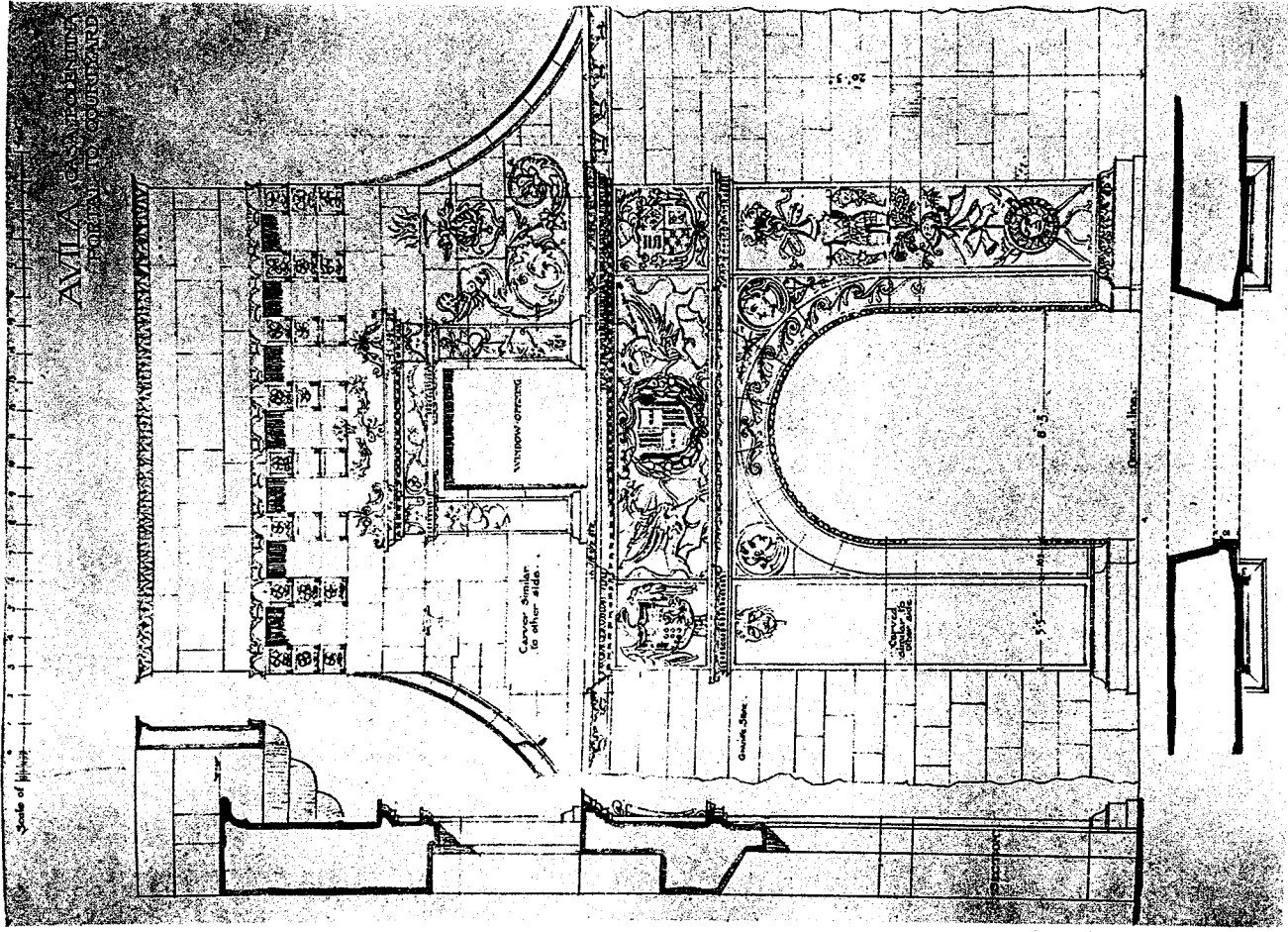
2'-5 3/8"

5"

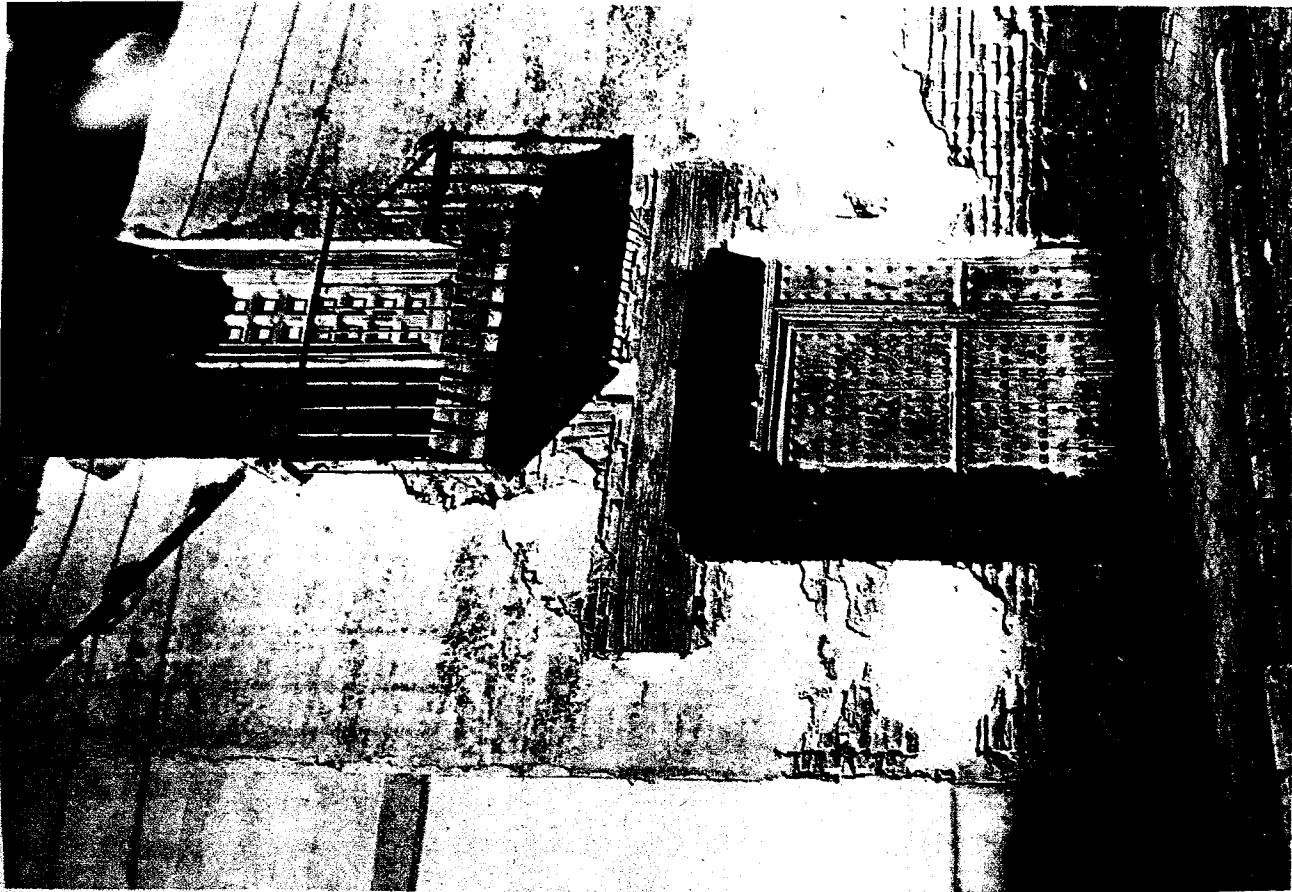
4 1/4"

1'-5 1/2"

2"



RENAISSANCE ARCHITECTURE AND ORNAMENT IN SPAIN
 A PLATE FROM THE WORK BY ANDREW N. PRENTICE



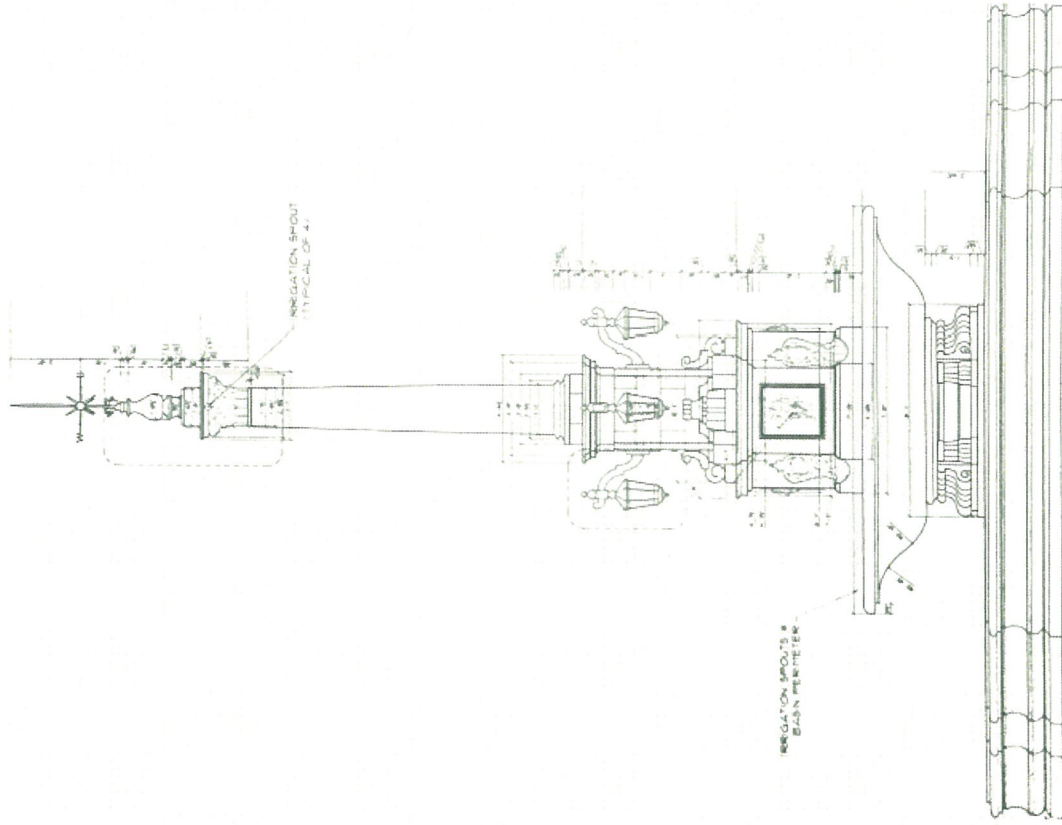
ALCALA de HENARES — Detail
 of doorway and balcony

ALCALA de HENARES — Détails,
 porte et balcon



DOUGLAS

WALTER DE GARGMO · PHINEAS E PAIST ·



CITY OF CORAL GABLES
 DEVELOPMENT SERVICES DEPARTMENT
 PLANNING AND ZONING DIVISION

2016

