

*De Soto Fountain
Grant Application*

May 21, 2024

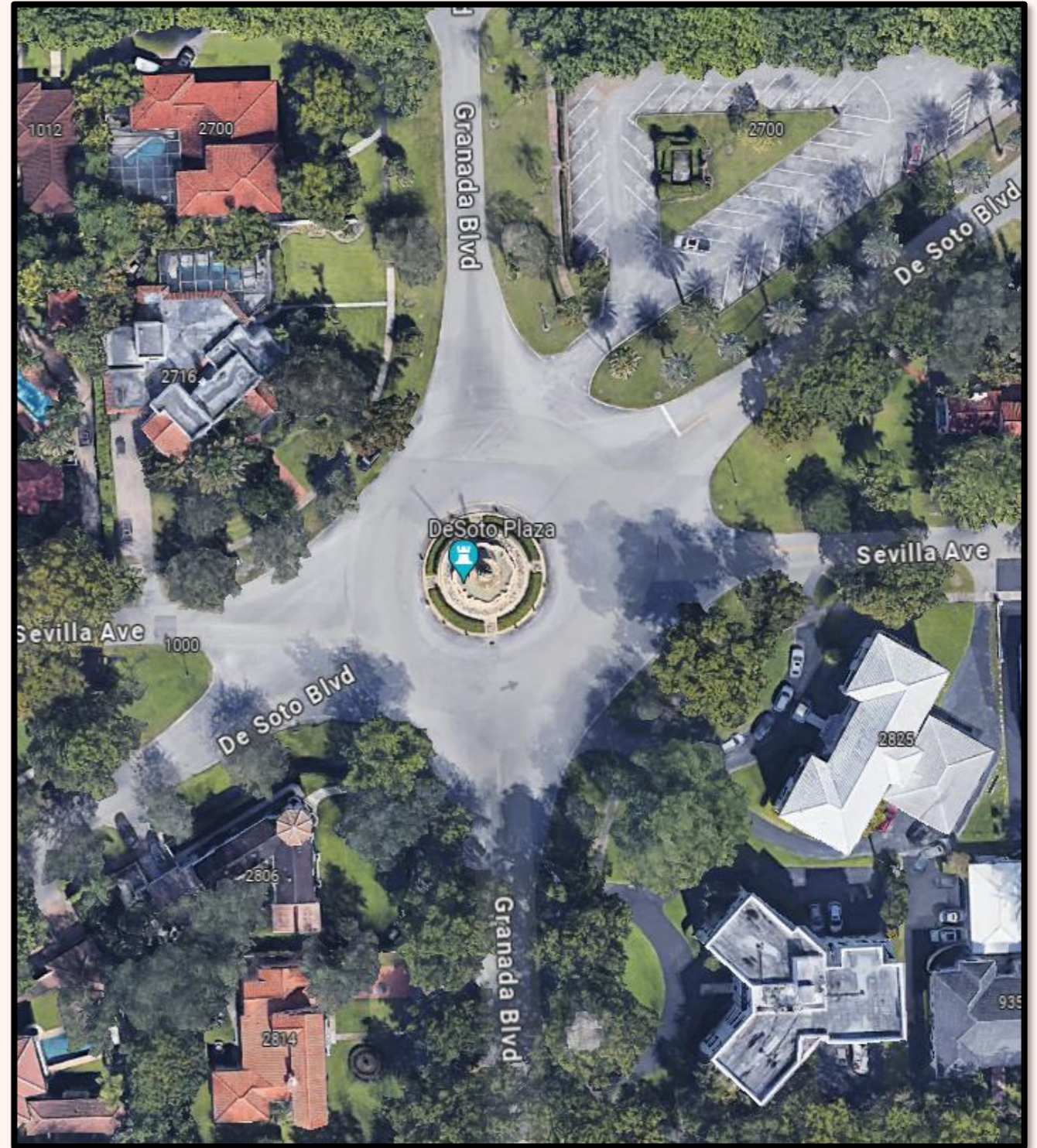
CORAL
GABLES®
THE CITY BEAUTIFUL



AERIAL VIEW

2

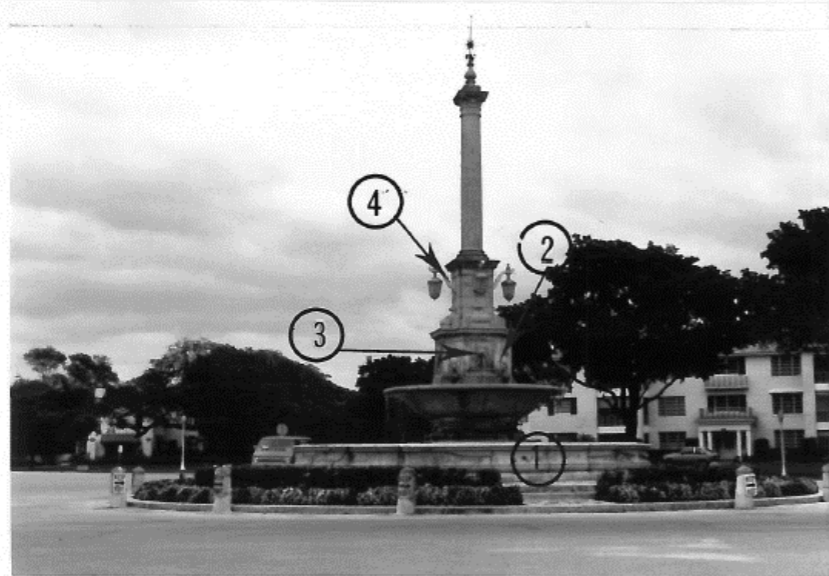
2



HISTORIC DESIGNATION



DESOTO PLAZA & FOUNTAIN



looking northeast

Date of Construction: 1923-24

Location: Intersection of Granada Boulevard, DeSoto Boulevard, Sevilla Avenue

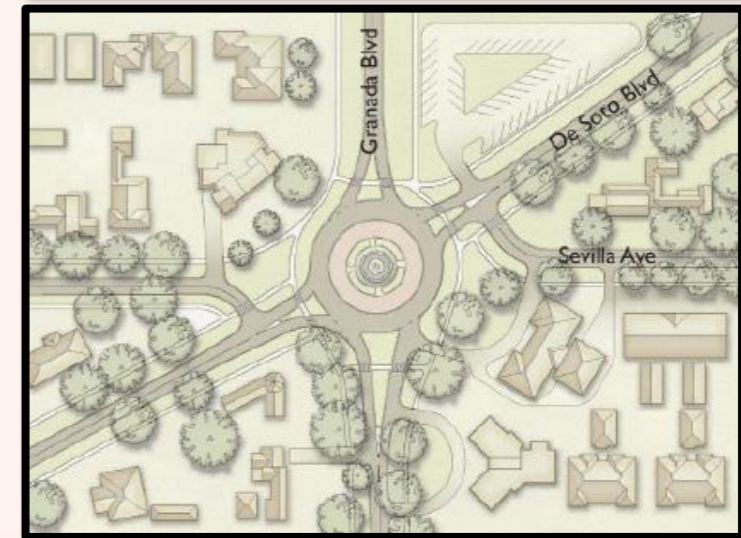
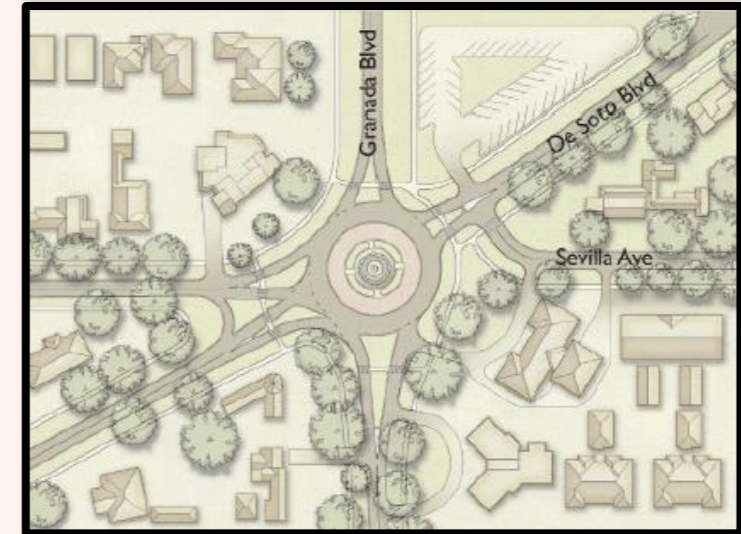
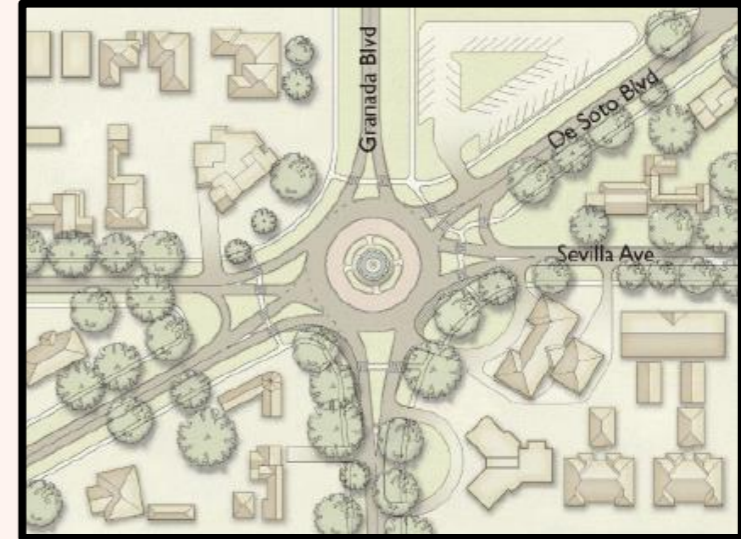
1. Circular basin containing a fountain, located at the center of the intersection
2. Rectangular pedestal in the center of the basin which supports a column
3. Relief panels containing masks which are each equipped with a single jet which falls into the circular retaining basin
4. Lanterns supported by curvilinear brackets at the column base

- ❖ Constructed in 1923
- ❖ Plazas identify major intersections, disperse traffic, and create a point of interest in the streetscape
- ❖ De Soto Plaza was designed as a traffic circle
- ❖ Declared Historic Landmark on October 23, 1975 – Resolution # 20998
 - Listed specific features of the fountain and location at the center of the intersection
- ❖ Asphalt was widened over time

DESIGN CONCEPTS

2

2



DESIGN CONCEPTS

2

2



DESIGN CONCEPTS

2

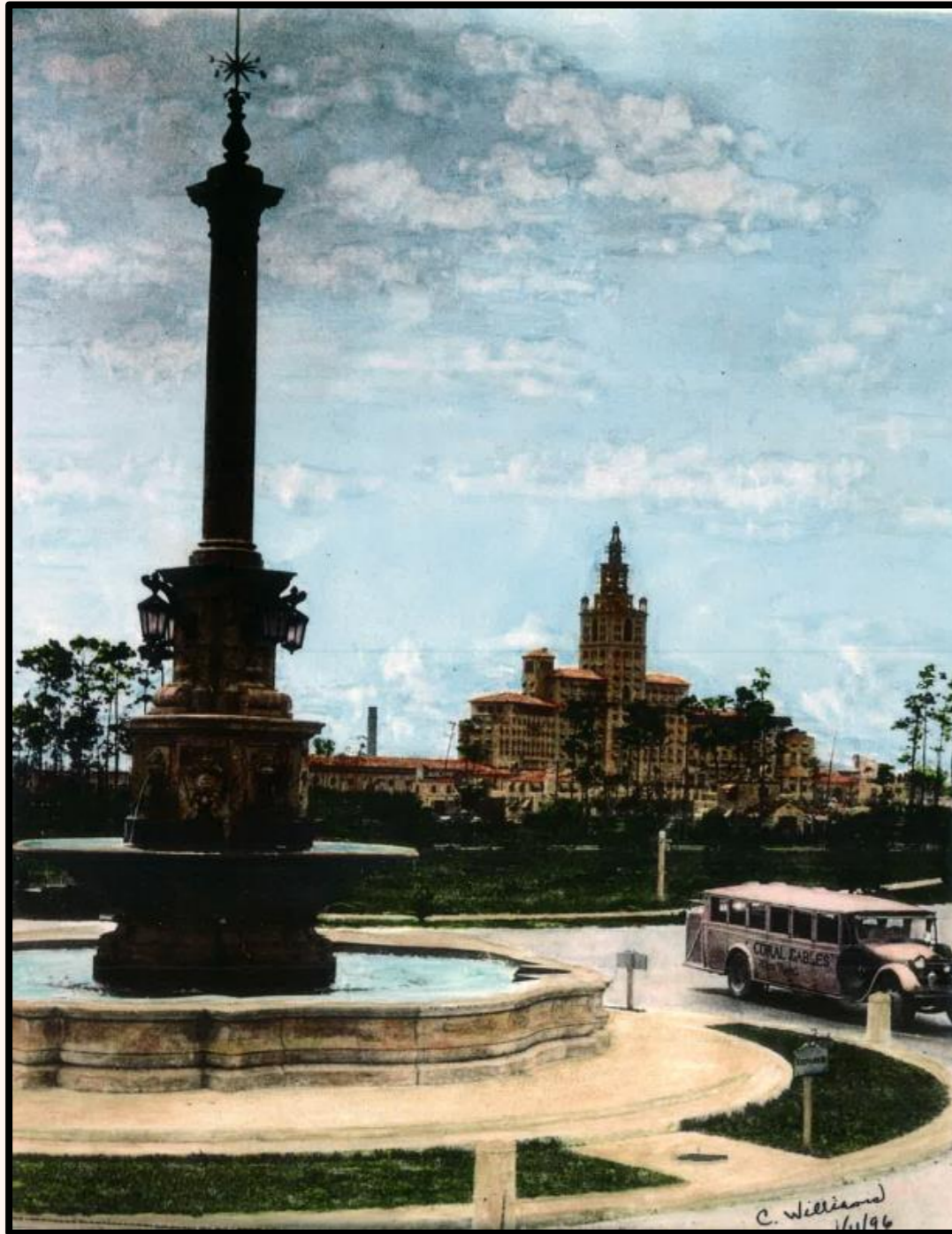
2



DESIGN INTENT

2

2



- ❖ Improve a poorly designed intersection
- ❖ Create pedestrian connectivity consistent with the City's commitment to Vision Zero – Resolution 2024-81
 - Venetian Pool
 - St. Theresa Catholic School
 - Church of the Little Flower
 - Biltmore Hotel
- ❖ Improve drainage and permeability by reducing the amount of pavement in the intersection
- ❖ Better protect the fountain from potential accidents by slowing traffic down across the intersection
- ❖ Standardize signage for vehicles entering the circle
- ❖ Add landscaping to enhance the intersection
- ❖ Include additional lighting for pedestrian safety

NEXT STEPS



- ❖ **May 15, 2024 - Historic Preservation Board unanimously approved (5-0) moving forward with the grant application with conditions**
 - Member of Historic Preservation Office and a member of the City's Planning Department be part of City team for entire design process
 - Presentation for Historic Preservation Board and Landmarks Advisory Board at a preliminary design stage
 - Design must seek to maintain the access as originally intended
- ❖ **Total project cost including design, CEI, public outreach, and construction is \$2,460,000**
- ❖ **Budget request this year is \$500,000 for public outreach and design**
- ❖ **Will require matching amount in the future if \$1,000,000 grant is awarded**



Thank you!

Public Works Department: *Keeping the City Beautiful Yesterday, Today & Tomorrow*

PWDepartment@coralgables.com

**CORAL
GABLES**
THE CITY BEAUTIFUL