



CITY OF CORAL GABLES PARKS & RECREATION

City-Owned Property Parks Analysis



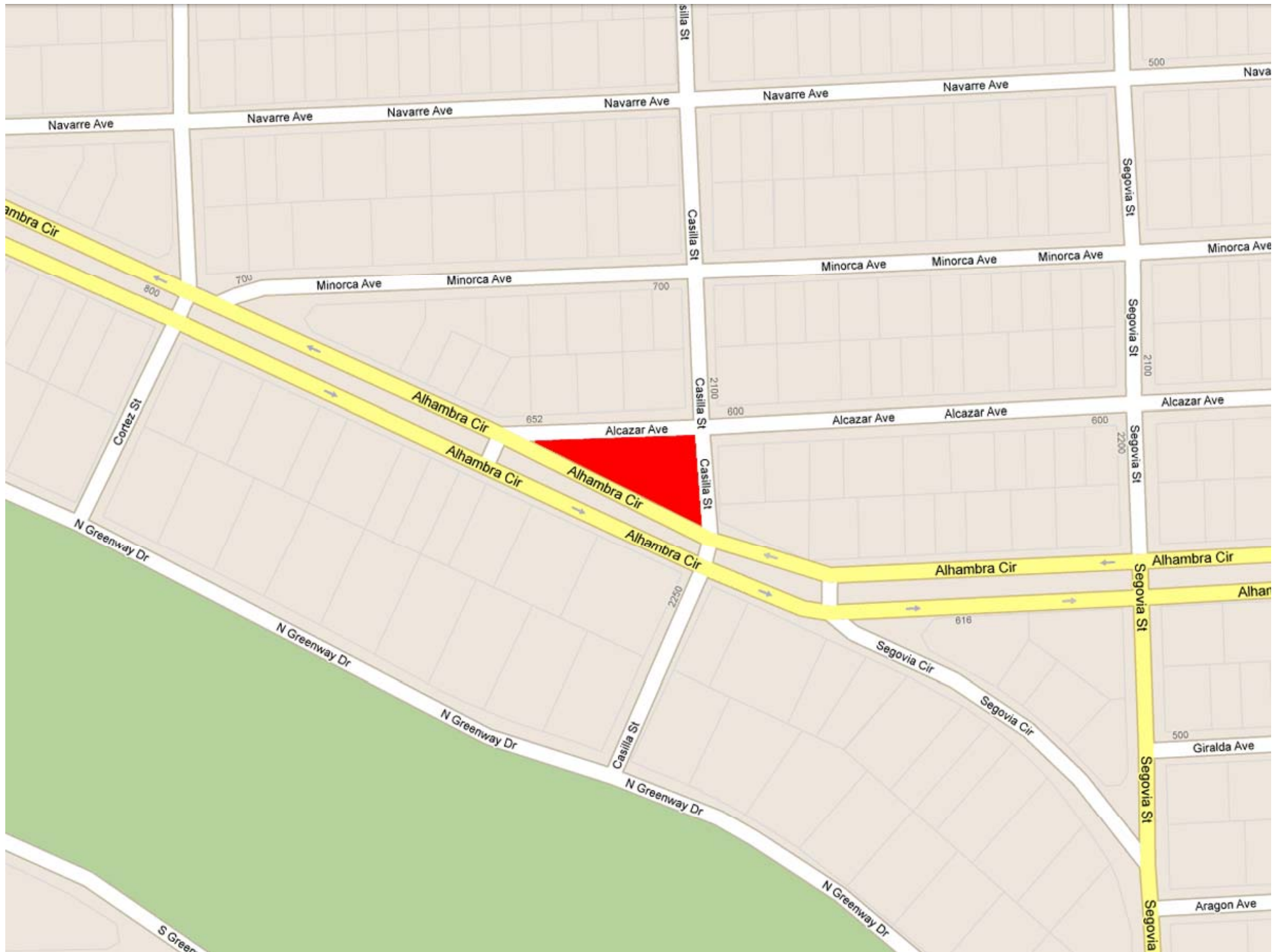
Analysis Methodology

- Parks and Recreation Department reviewed the following property types:
 1. Properties that are City-owned.
 2. Properties that are green open spaces serving as passive areas.



Alcazar Plaza

- 0.3 acre lot located at 700 Alcazar Plaza.
- Key features include: large trees, bordering hedges and a small wall on southern perimeter.
- Issues to consider: Historically kept as passive green space, safety concerns due to proximity of busy street, previous development attempts not met with favorable response by Residents.





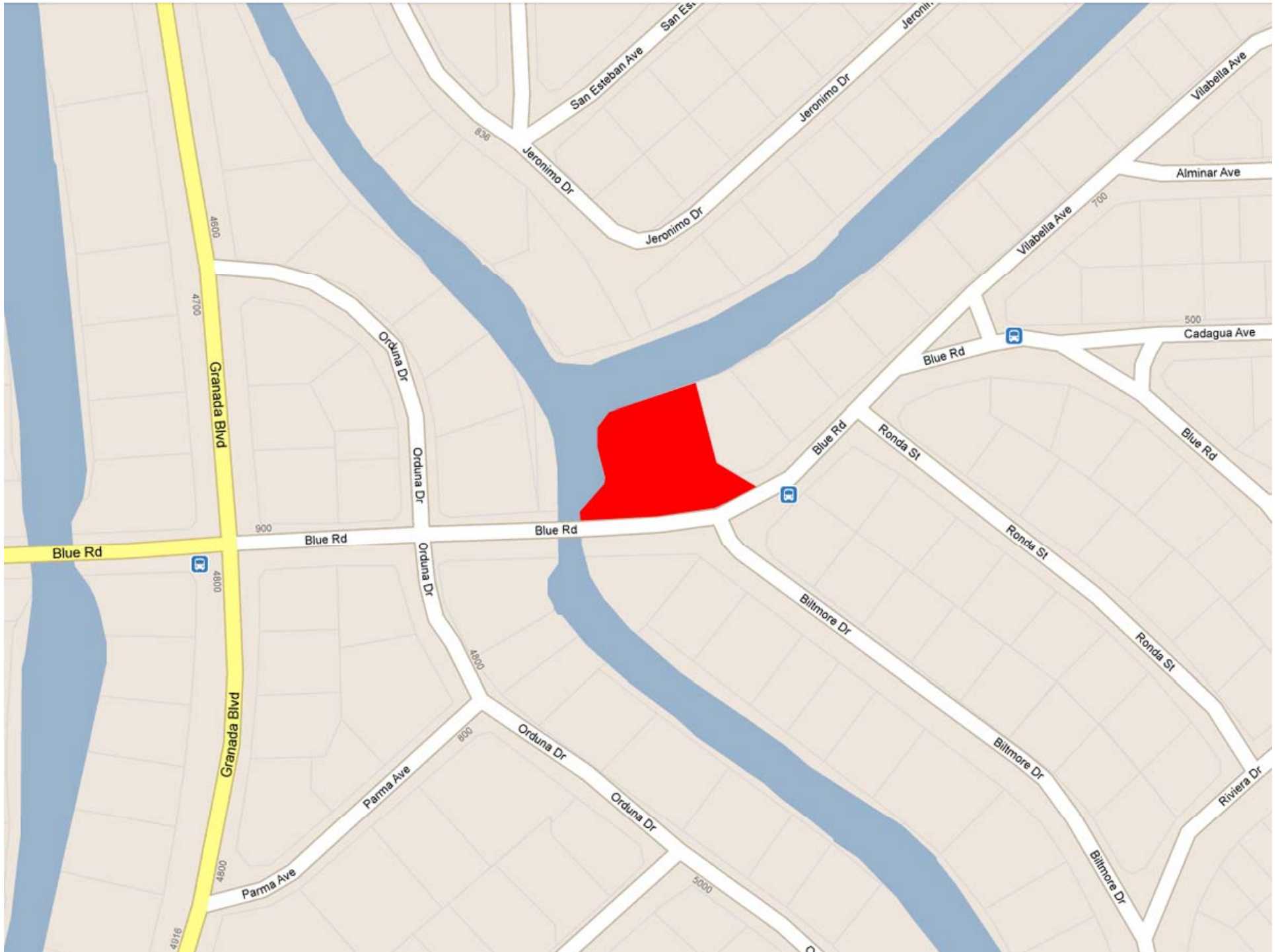






Blue Road Open Space

- 0.63 acre open green space located at 757 Blue Road.
- Key features include several trees, perimeter rock wall and waterway access.
- Issue to consider: Historically kept as a passive green space, adjacent to a residence, trespass order, safety concerns with waterway access.







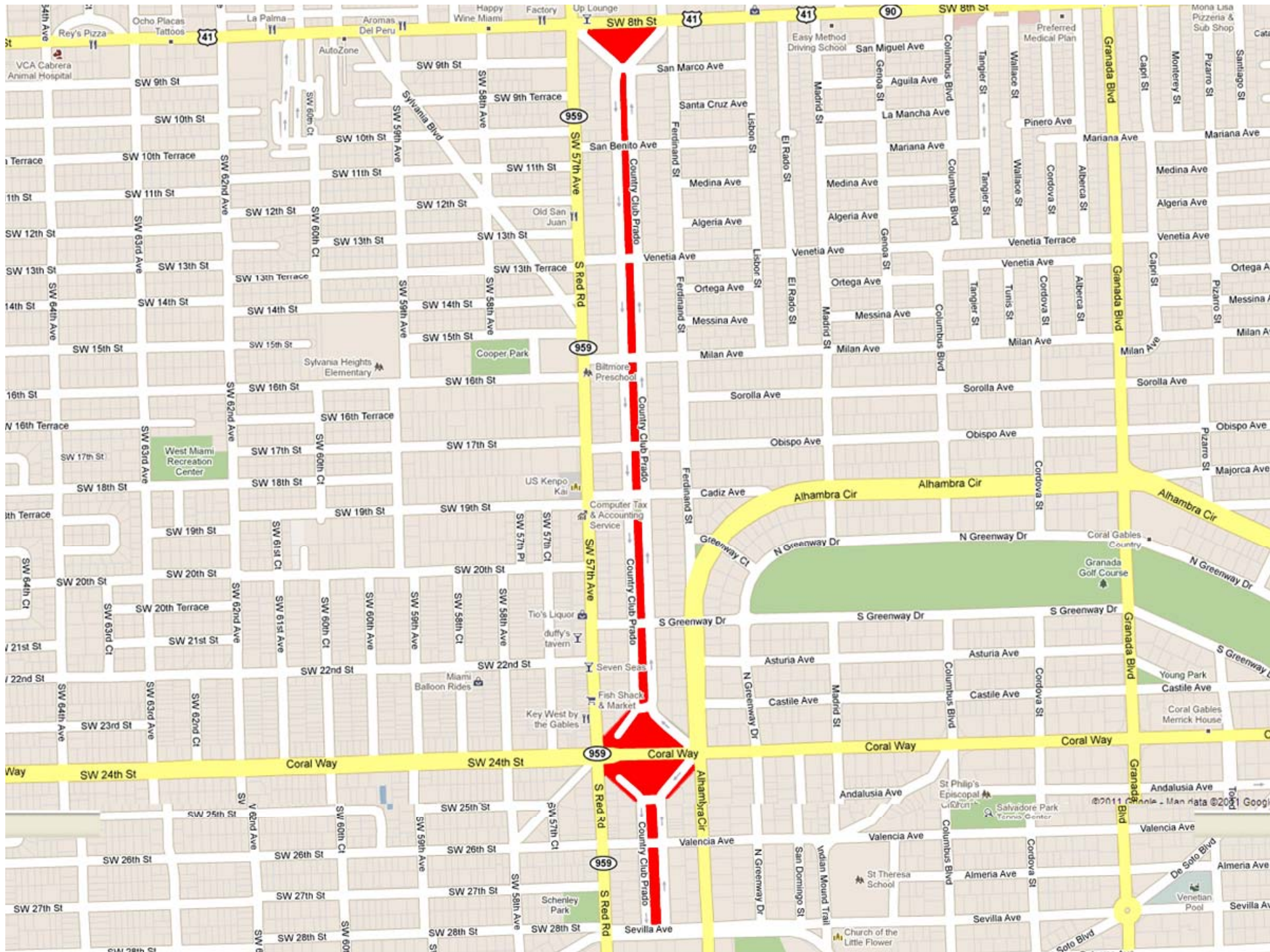






Country Club Prado

- 13 acre long narrow linear green space with large green spaces on Coral Way (Ferdinand Plaza) and SW 8th Street (J. Fritz and Frances Gordon Park).
- Key features include: Pet-Friendly area (8th Street), ample green space, renovated historic features.
- Issues to consider: Historically kept as a passive green space, Impact on area residents, location on western border could attract far more non-residents.











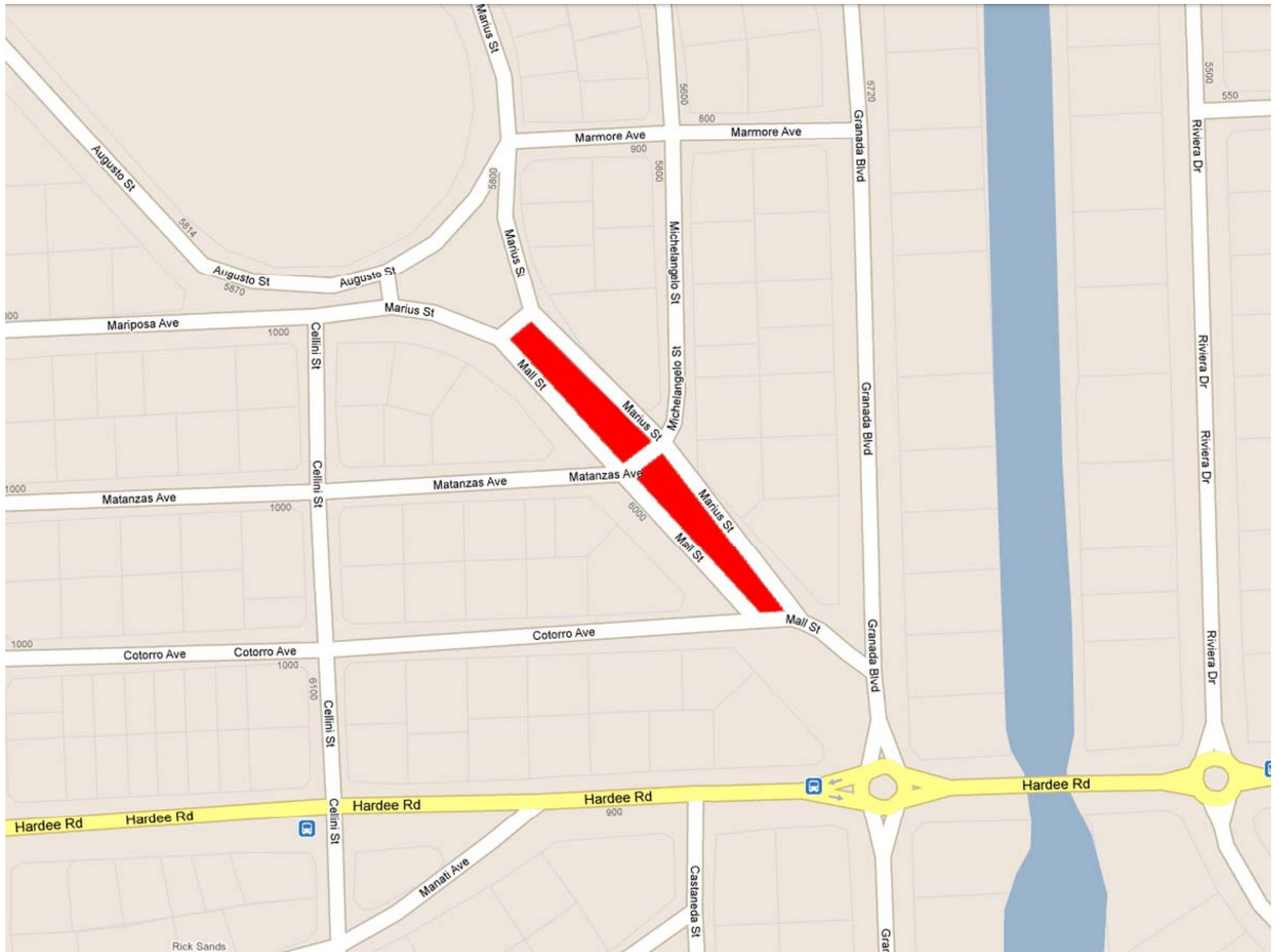






Mall Street Median

- 1.1 acre median on Mall Street from Granada Boulevard to Mariposa Avenue
- Key features include: trees throughout the property, narrow spaces similar to Country Club Prado.
- Issues to consider: impact to area residents, right-of-way limitations, area size.







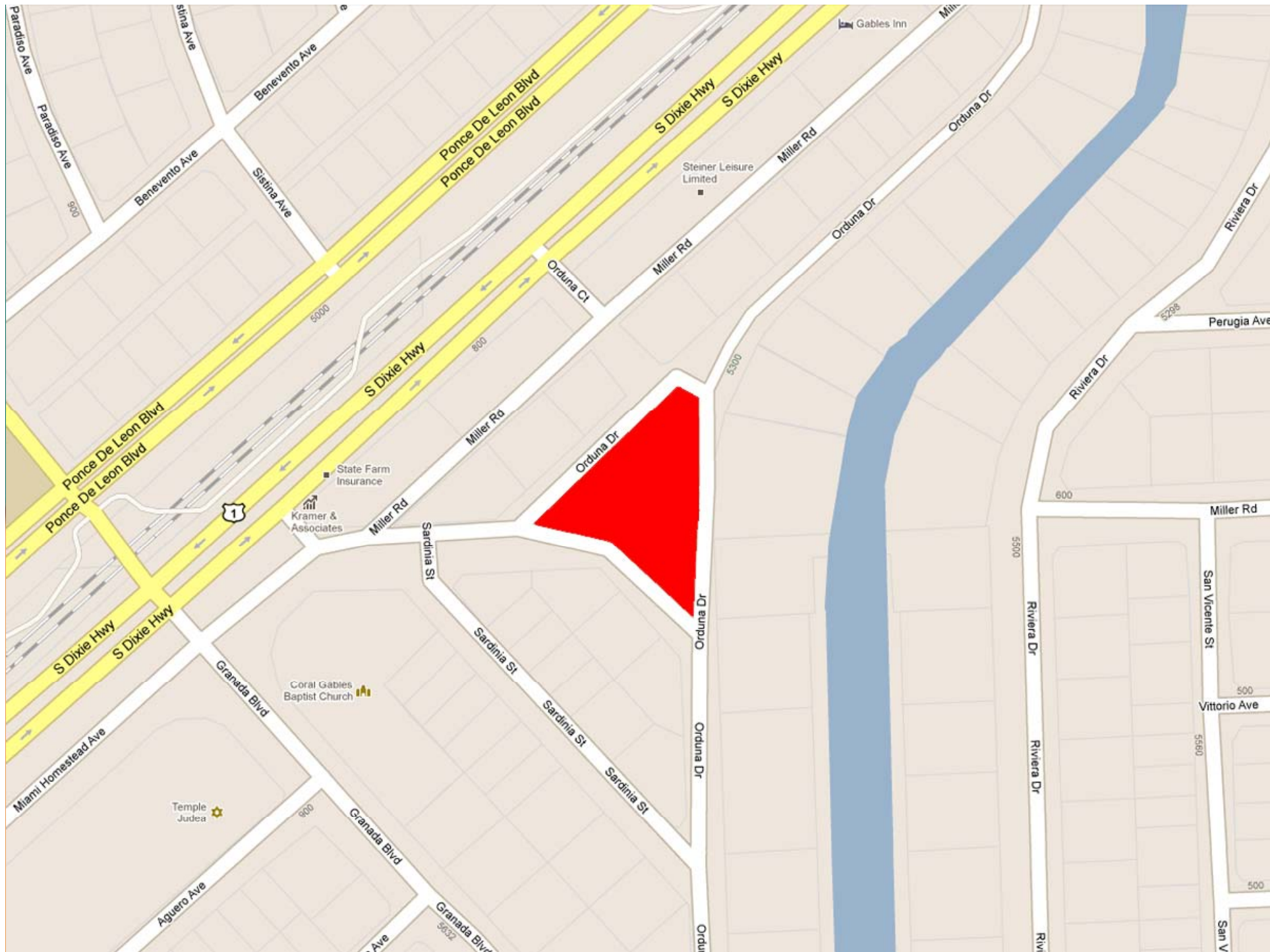






Orduna Drive/ Miller Road Triangle

- 0.25 acres green space located on corner of Orduna Drive and Miller Road.
- Key features include: non-traditional shape of available space, some trees, once featured a road bisecting property.
- Issues to consider: Proximity to Maggiore Park, impact on area residents, right of way limits on space.







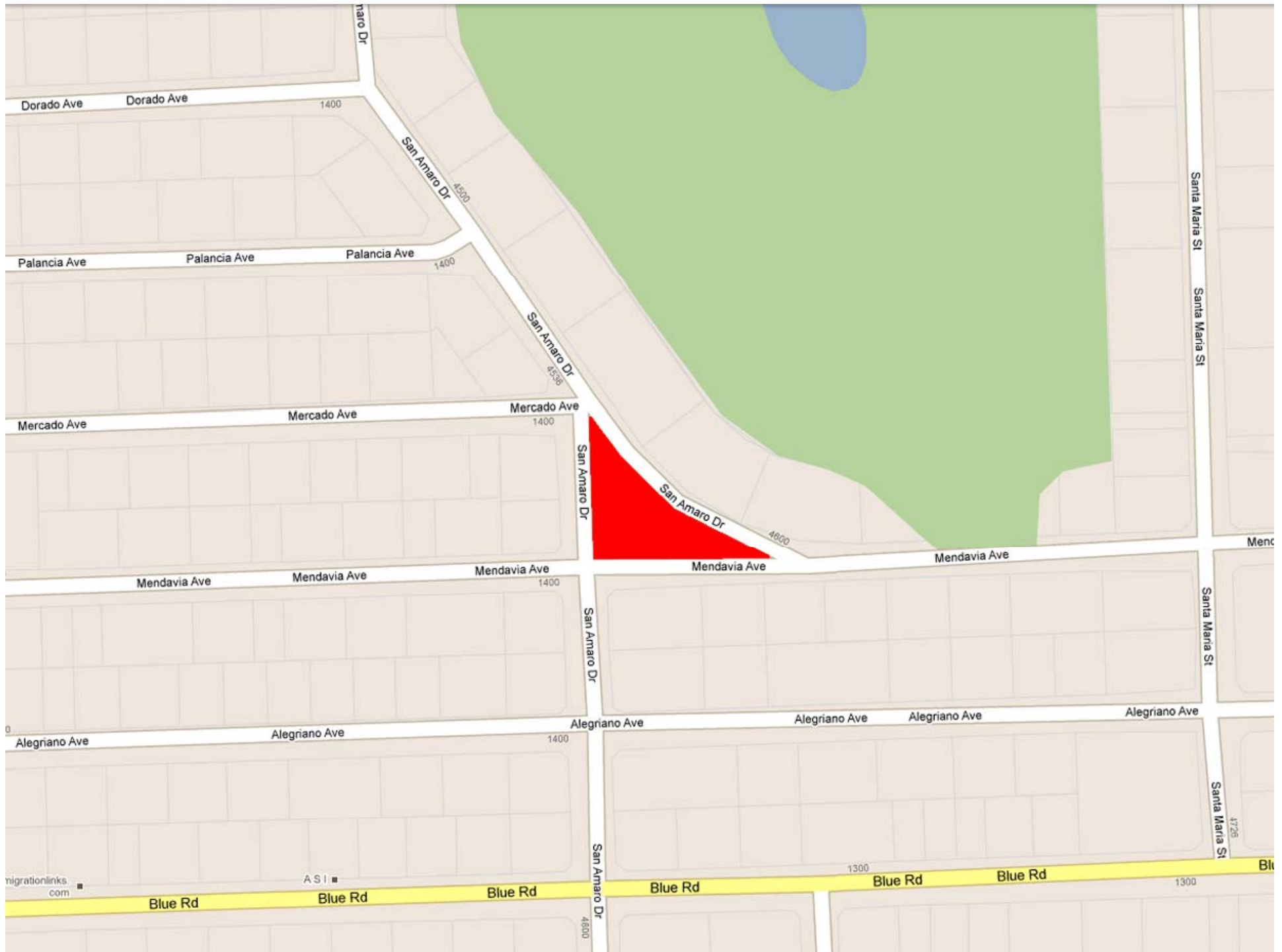






San Amaro Triangle

- 0.2 acre space located at 4600 San Amaro Drive.
- Key features include: triangular shape, large trees, surrounded on all sides by roads.
- Issues to consider: area size, right of way limitations restrict the size of available space even further, proximity of adjacent roads, impact on area residents.











Leucandendra Drive Triangle

- 0.2 acres open green space located in Gables Estates development.
- Key features include: non-traditional shaped space, trees on perimeter, open area in the middle of parcel.
- Issues to consider: Area space, benefit only to residents in the development, residents have been amenable to playground in the past.

