

City of Coral Gables

Granada Golf Course Rain Shelters

2001 GRANADA BLVD.
CORAL GABLES, FL 33134

Project Number:
25025

Date:
November 12, 2025

Historic Preservation Board
Certificate of Appropriateness Application
Historical Resources and Cultural Arts Presentation

GURRIMATUTE



PROJECT LOCATION

2001 GRANADA BLVD.
CORAL GABLES, FL 33134

GRANADA BLVD.

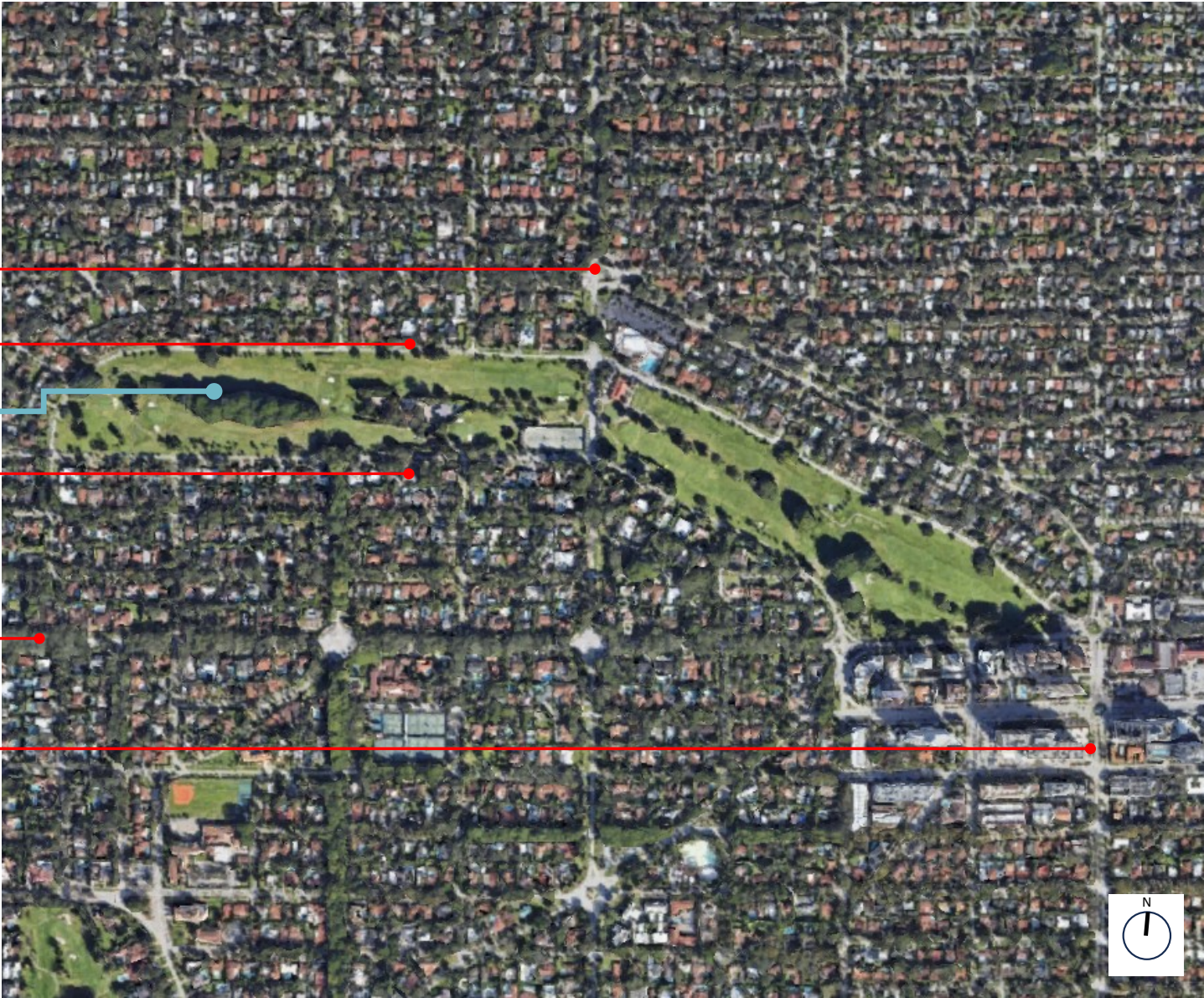
N. GREENWAY DR.

SITE

S. GREENWAY DR.

Coral Way

SEGOVIA ST.



HISTORICAL PHOTOS

Ca.1920s

Granada Golf Course with the Alhambra Water Tower in the Distance c1920s
Courtesy of State Archives of Florida
Source: <https://floridahistoricgolftrail.com/courses/granada-golf-course/>



Golfers on the 2nd Hole - 1924
Courtesy of the City of Coral Gables
Source: <https://floridahistoricgolftrail.com/courses/granada-golf-course/>



SITE LOCATION MAP

- Existing Rain Shelters
- Burger Bobs/Pro Shop



CURRENT CONDITIONS

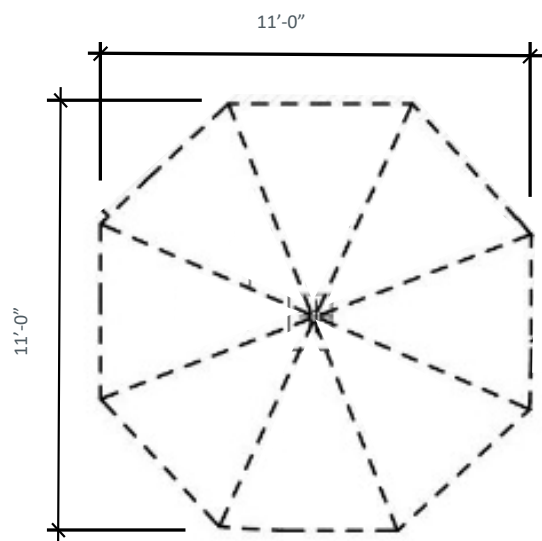
The nine existing shelters throughout the course have deteriorated due to age and exposure to environmental conditions.

The proposed designs will be comparable in scale, size, and materiality to the original shelters.

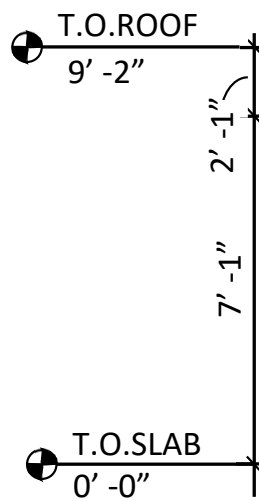
- A. Shelter 2
- B. Shelter 4
- C. Shelter 5
- D. Shelter 6
- E. Shelter 7
- F. Shelter 8



EXISTING RAIN SHELTER (TYPICAL)
ROOF PLAN & ELEVATION



TYPICAL ROOF PLAN
N.T.S



TYPICAL ELEVATION
N.T.S

GRANADA GOLF COURSE

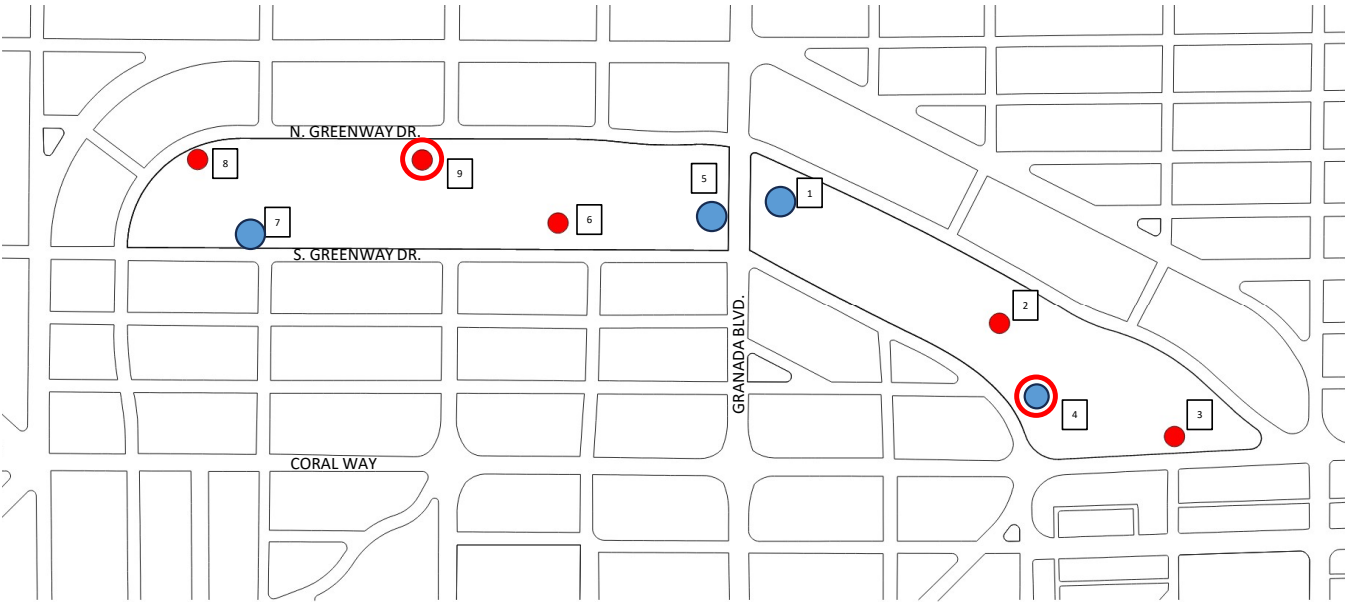
RAIN SHELTERS

SCOPE OF WORK

The project involves replacing the nine existing rain shelters with City-selected prototype designs. The new shelters must be comparable in scale, size, and materiality to the existing structures, ensuring consistency with the current urban environment while meeting the City’s design and performance standards.

SITE PLAN KEYNOTES

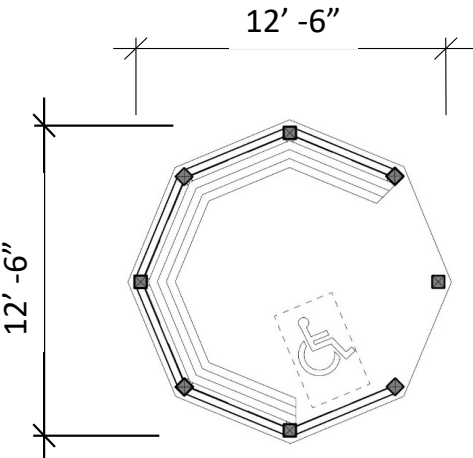
- 1. Rain Shelter 1 with Drinking Fountain
- 2. Rain Shelter 2
- 3. Rain Shelter 3
- 4. Rain Shelter 4 with golf cart access & Drinking Fountain
- 5. Rain Shelter 5 with Drinking Fountain
- 6. Rain Shelter 6
- 7. Rain Shelter 7 with Drinking Fountain
- 8. Rain Shelter 8
- 9. Rain Shelter 9 with golf cart access



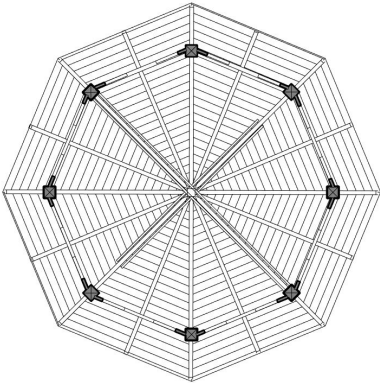
PROTOTYPE I

PROPOSED TYPICAL PLANS

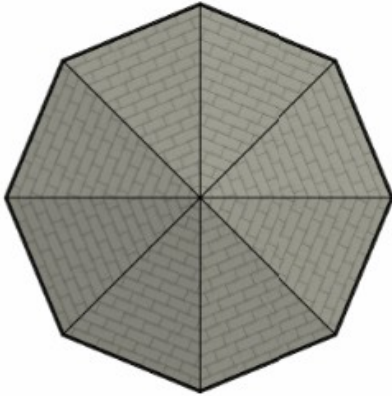
RAIN SHELTERS 1 , 2, 3, 5, 6, 7, & 8



FLOOR PLAN
N.T.S

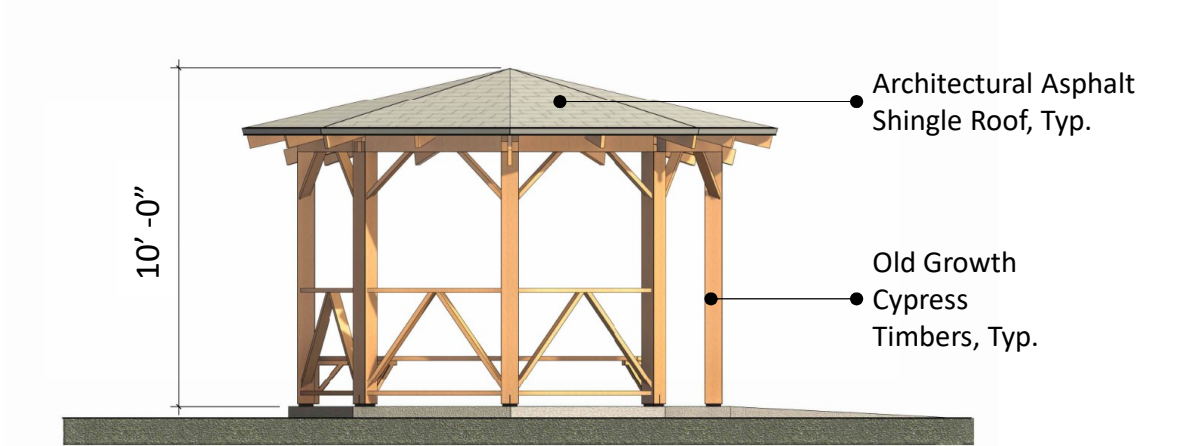


REFLECTED CEILING PLAN
N.T.S

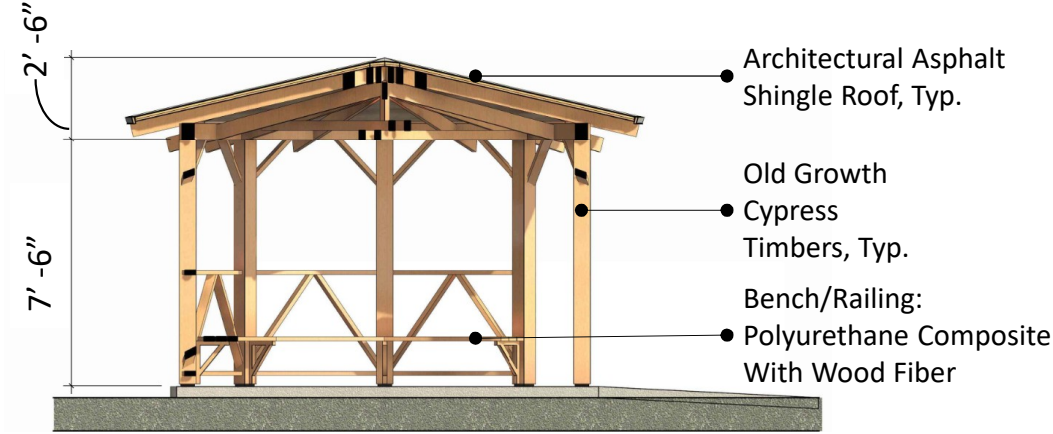


ROOF PLAN
N.T.S

PROTOTYPE I
PROPOSED TYPICAL
ELEVATION AND SECTION
 RAIN SHELTERS 1 , 2, 3, 5, 6, 7, & 8



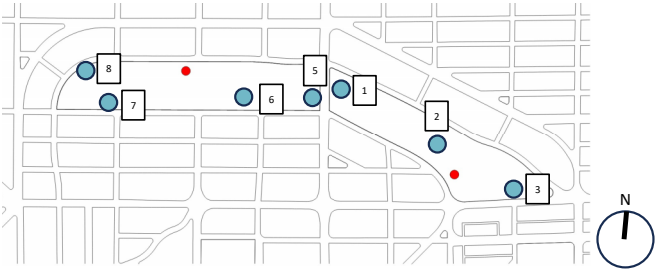
ELEVATION
 N.T.S



BUILDING SECTION
 N.T.S

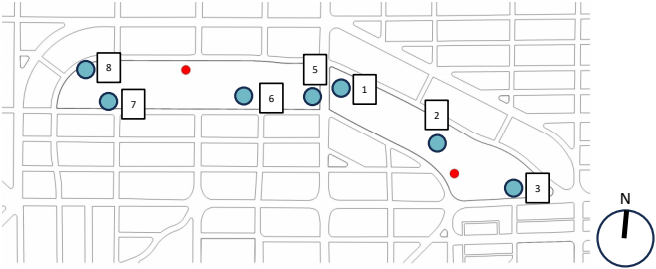
PROTOTYPE I

RAIN SHELTERS 1 , 2, 3, 5, 6, 7, & 8



PROTOTYPE I

RAIN SHELTERS 1 , 2, 3, 5, 6, 7, & 8



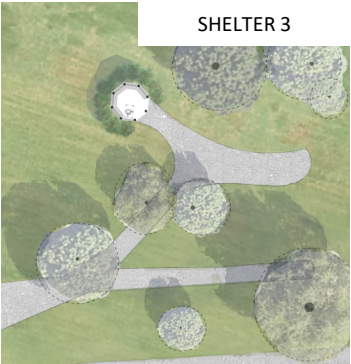
G



SHELTER 1



SHELTER 2



SHELTER 3



SHELTER 5



SHELTER 6



SHELTER 7

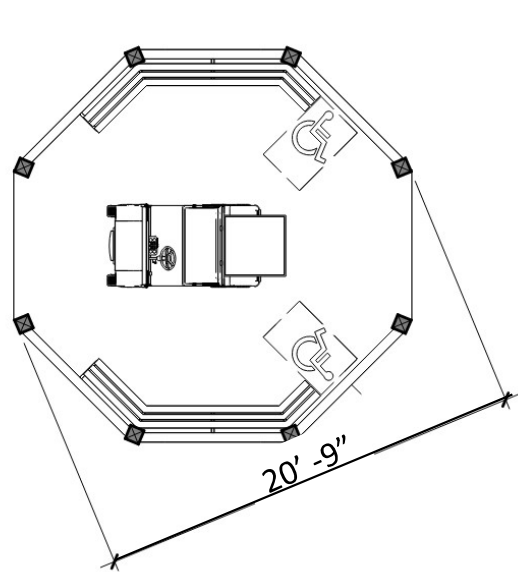


SHELTER 8

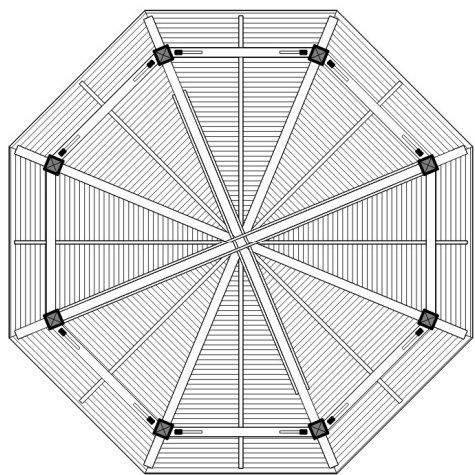
PROTOTYPE II – GOLF CART ACCESS

PROPOSED TYPICAL PLANS

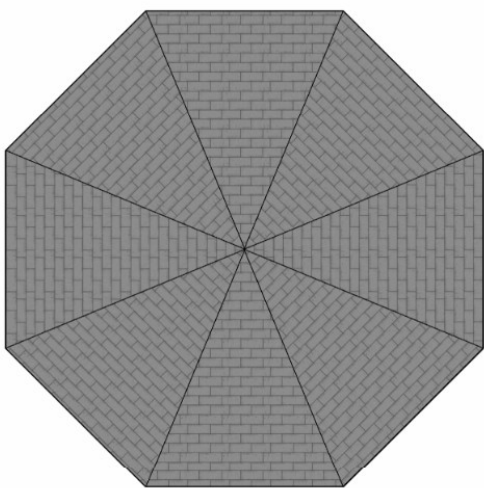
RAIN SHELTERS 4 & 9



FLOOR PLAN
N.T.S

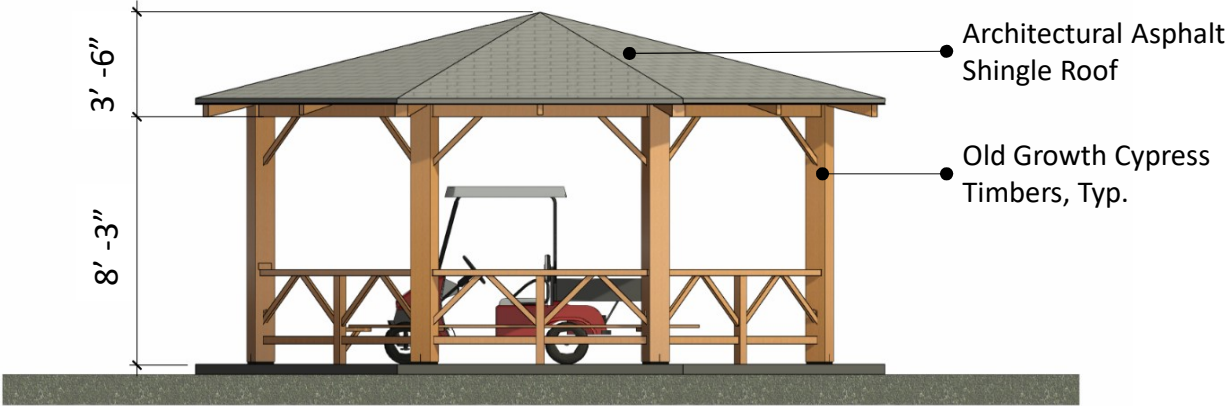


REFLECTED CEILING PLAN
N.T.S

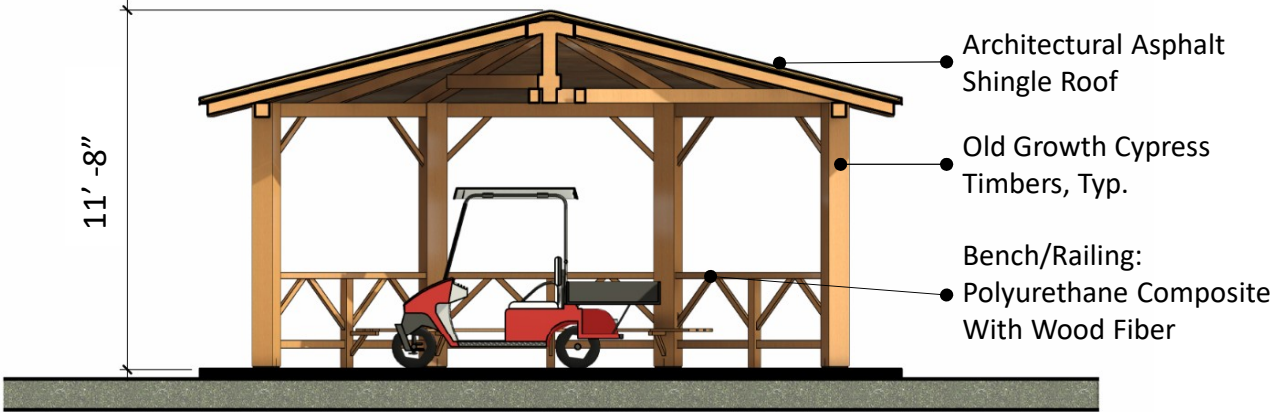


ROOF PLAN
N.T.S

PROTOTYPE II – GOLF CART ACCESS
 PROPOSED TYPICAL
 ELEVATION AND SECTION
 RAIN SHELTERS 4 & 9



ELEVATION
 N.T.S

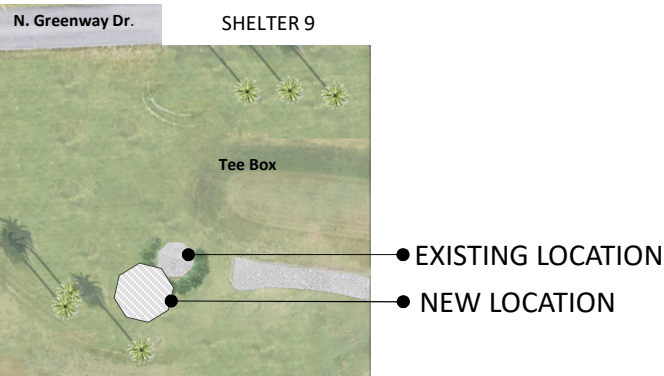
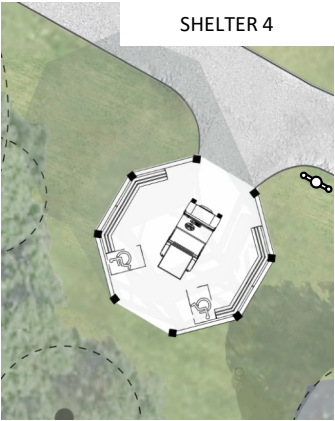
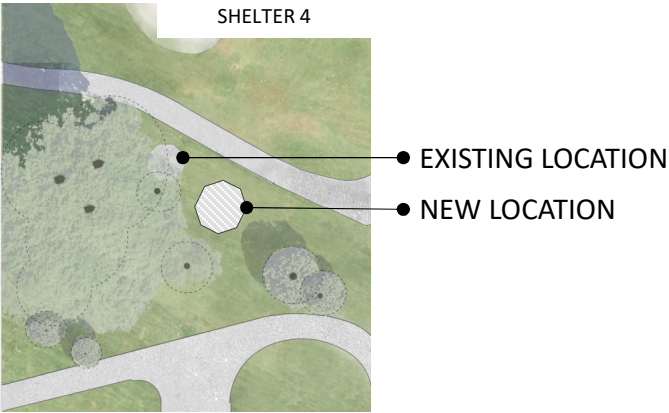
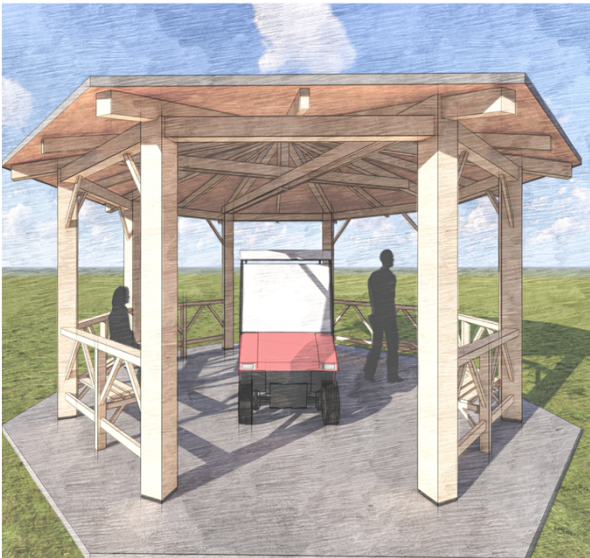


BUILDING SECTION
 N.T.S

PROTOTYPE II – GOLF CART ACCESS
RAIN SHELTERS 4 & 9



PROTOTYPE II – GOLF CART ACCESS
RAIN SHELTERS 4 & 9



FINISHES

The materials will be replicated to match the original structure as closely as possible.

EXISTING

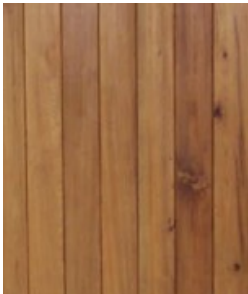


ROOF STRUCTURE,
VERTICAL SUPPORT
SYSTEM, MID-LEVEL
BRACING, SEATING AREA



ROOF COVERING

PROPOSED



OLD GROWTH CYPRESS TIMBER
STRUCTURAL COMPONENTS
(roof structure, vertical support
system, bracing system)



ARCHITECTURAL
ASPHALT SHINGLES



POLYURETHANE COMPOSITE
WITH WOOD FIBER
NON-STRUCTURAL
COMPONENTS
(seating area, railing)
color: coppered oak

City of Coral Gables

Granada Golf Course Rain Shelters

Historic Preservation Board
Certificate of Appropriateness Application
Historical Resources and Cultural Arts Presentation

THANK YOU.

GURRIMATUTE

