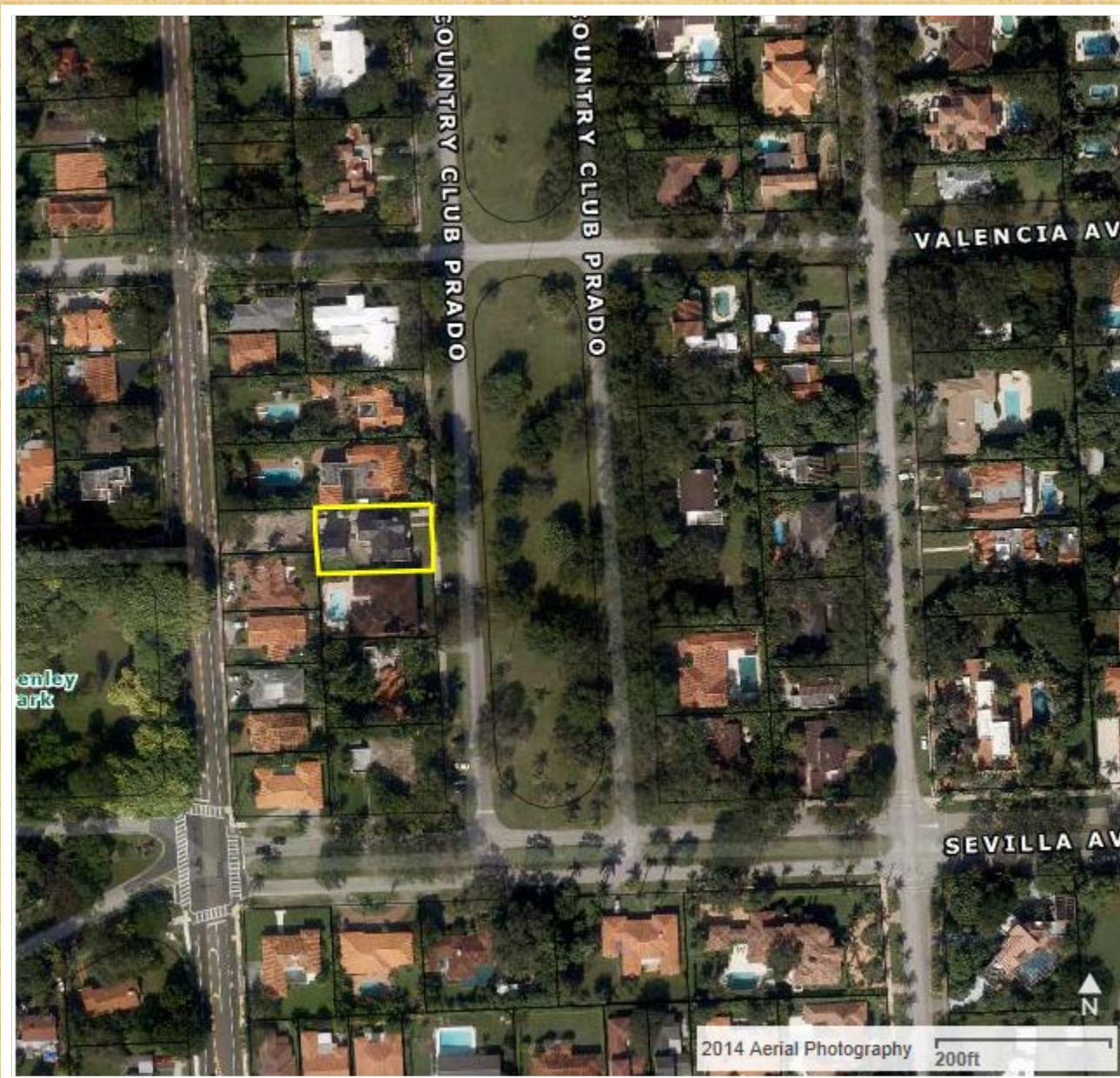


AD VALOREM TAX ABATEMENT:

CASE FILE AV 2013-004

An application requesting ad valorem tax relief for the property at **2622 Country Club Prado**, a local historic landmark, legally described as Lots 11 thru 13, Block 14, Coral Gables Section “D,” according to the plat thereof, as recorded in Plat Book 25 at Page 74 of the Public Records of Miami-Dade County, Florida. The related Certificates of Appropriateness, COA (ST) 2013-137, COA (ST) 2013-145, COA (ST) 2013-151, COA (ST) 2014-007, COA (ST) 2014-010, COA (ST) 2014-015, and COA (ST) 2014-037 were granted design approval administratively by the Historical Resources Department.



Location of 2622 Country Club Prado

Aerial Photograph Courtesy Miami-Dade County Property Appraiser



ca. 1940s Photograph of 2622 Country Club Prado

PHOTO: 1



Before

PHOTO: 1



After

PHOTO: 2



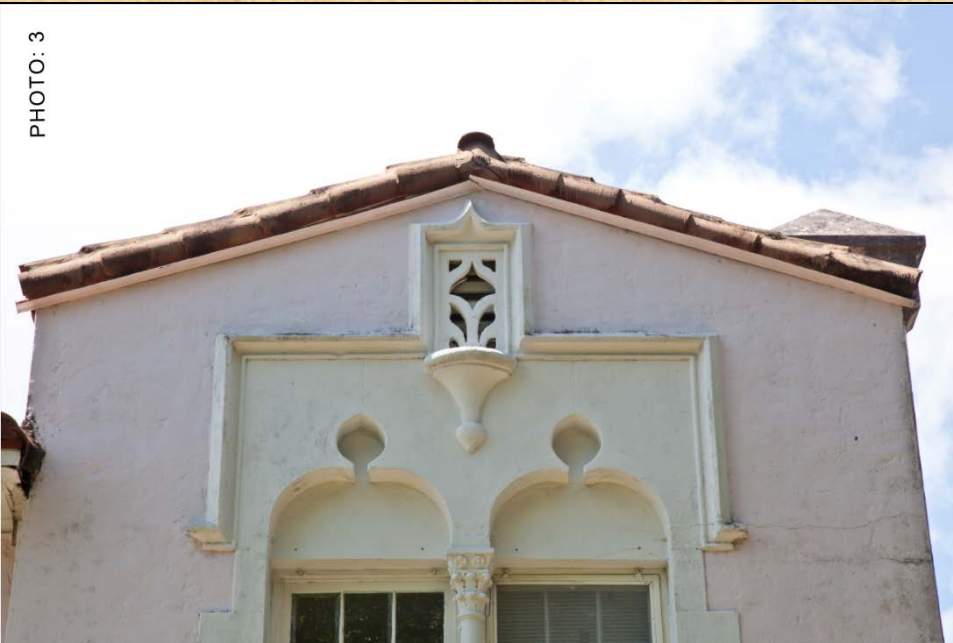
Before

PHOTO: 2



After

PHOTO: 3



Before

PHOTO: 3



After

PHOTO: 4



Before

PHOTO: 4



After

PHOTO: 5



Before

PHOTO: 5



After

PHOTO: 6

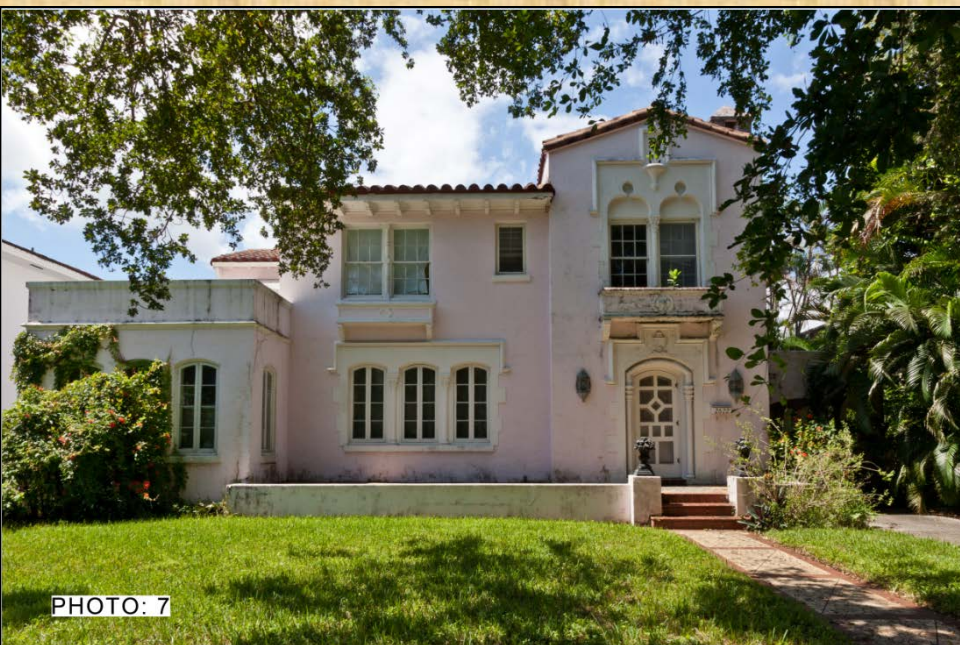


Before

PHOTO: 6



After



Before



After



Before



After



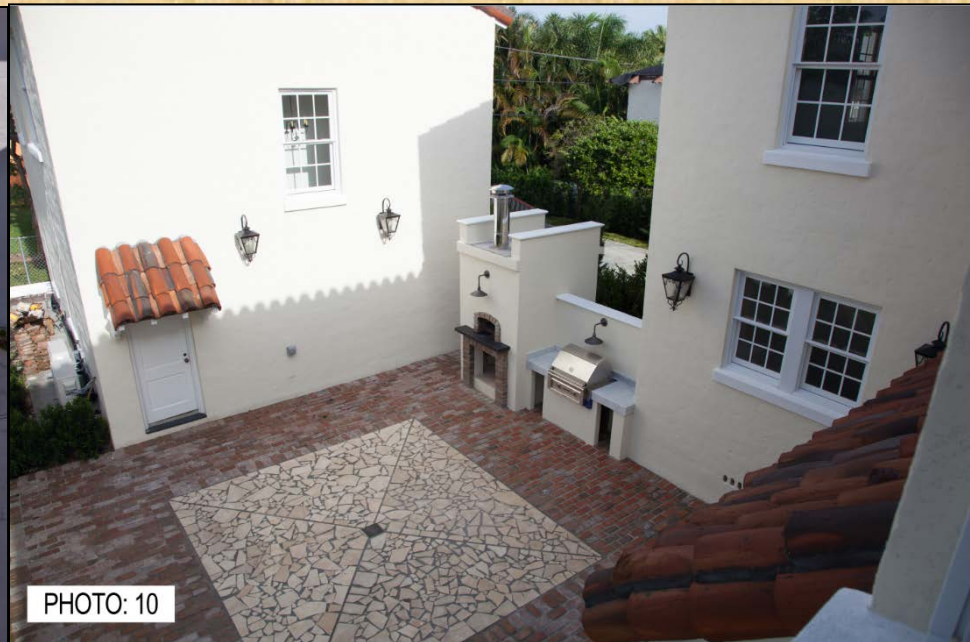
Before



After



Before



After

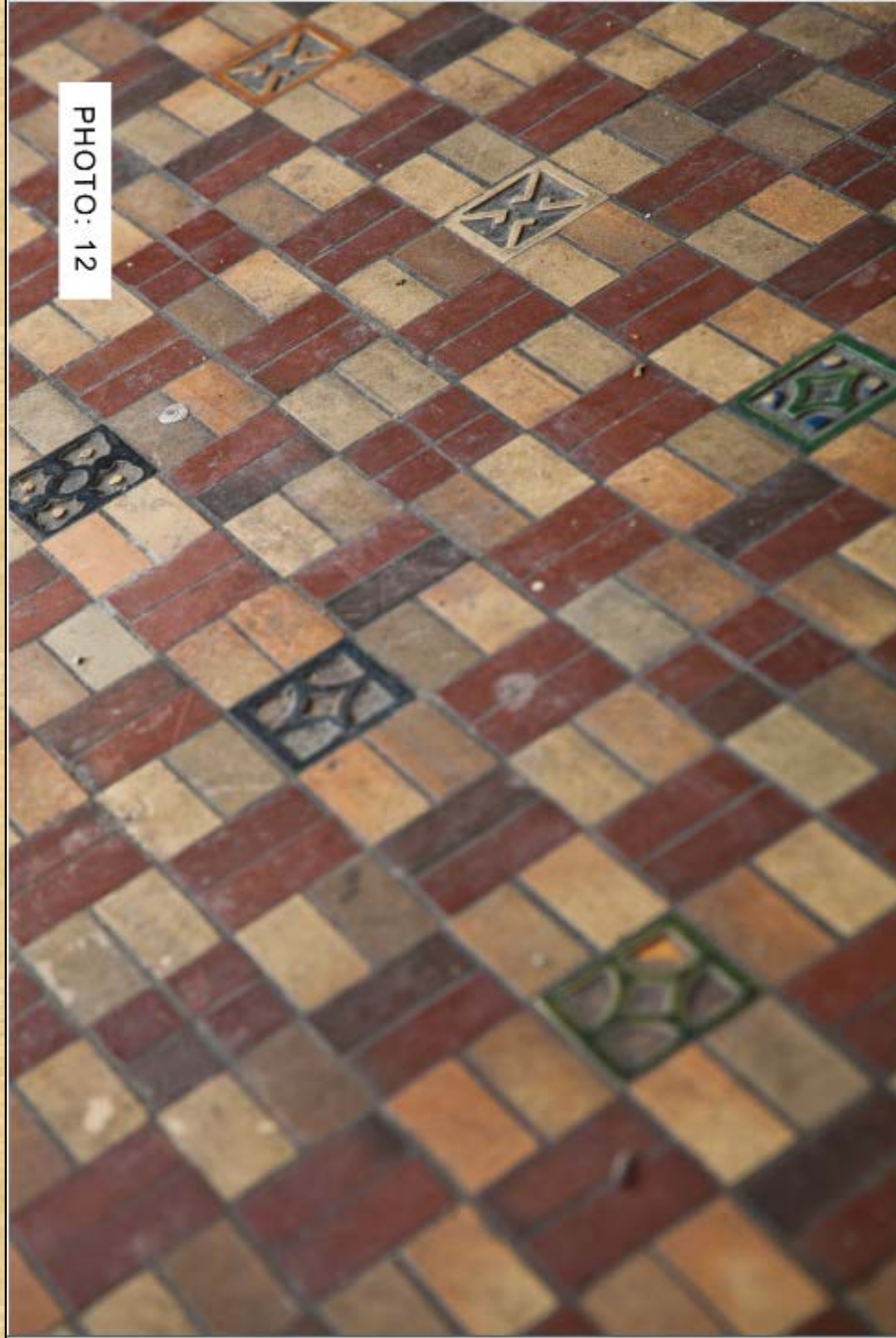


Before



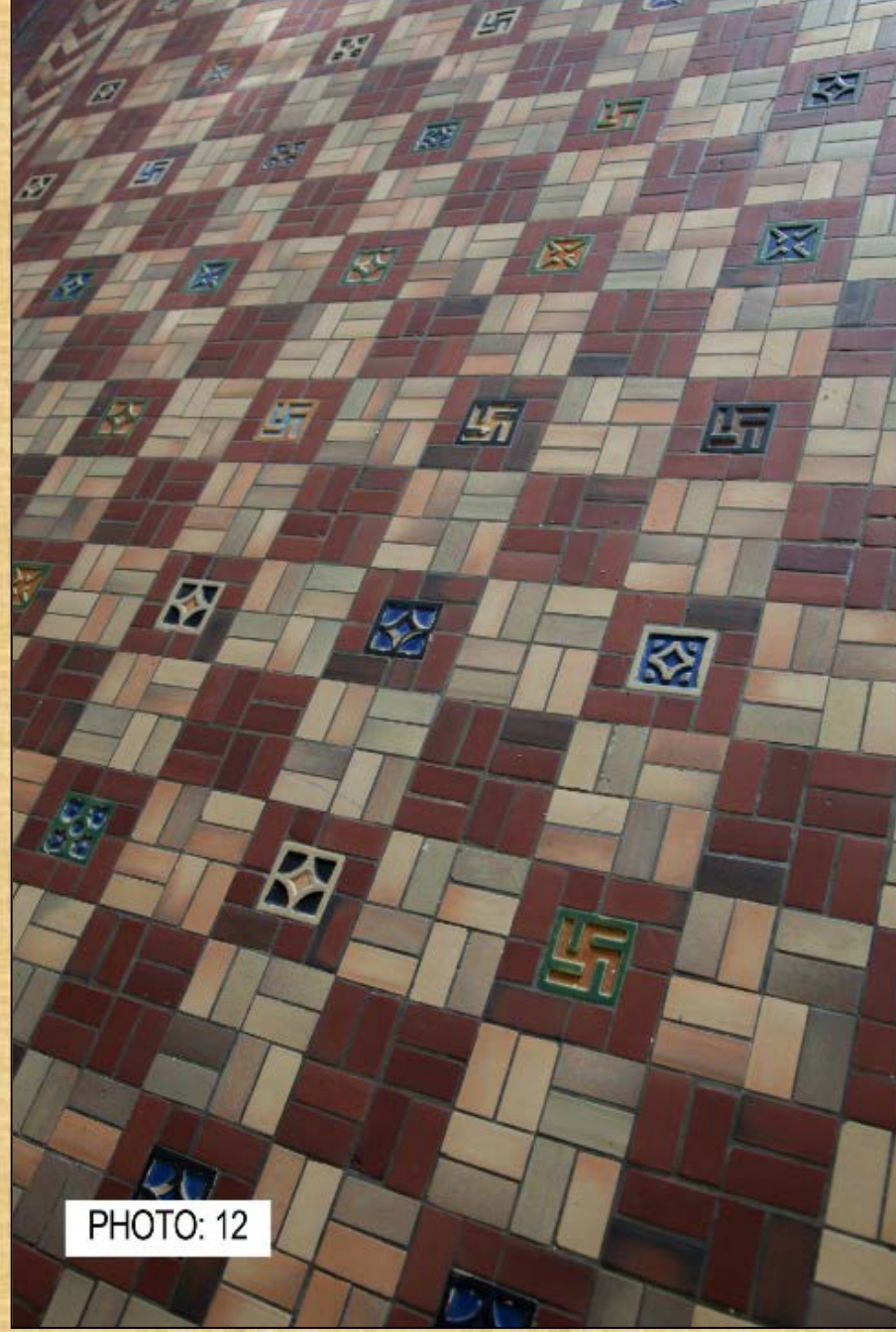
After

PHOTO: 12



Before

PHOTO: 12



After

PHOTO: 13



Before

PHOTO: 13



PHOTO: 13b



After

PHOTO: 14



Before



PHOTO: 14

After



Before



After

PHOTO: 16



Before



After

PHOTO: 17



Before

PHOTO: 17



After



Before



After

PHOTO: 19



Before

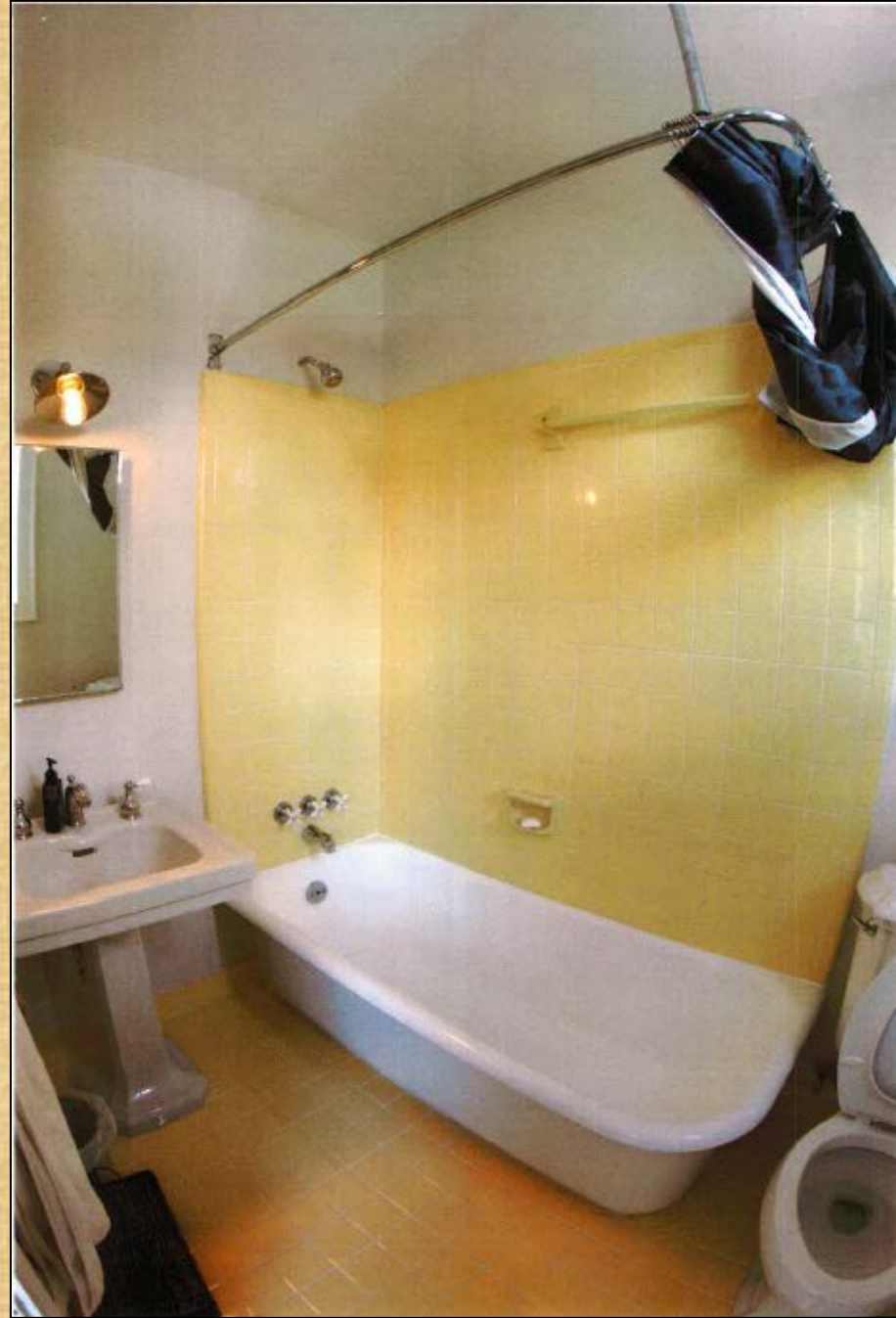
PHOTO: 19



After



Before



After



Before



After



Before



After



2622 Country Club Prado

