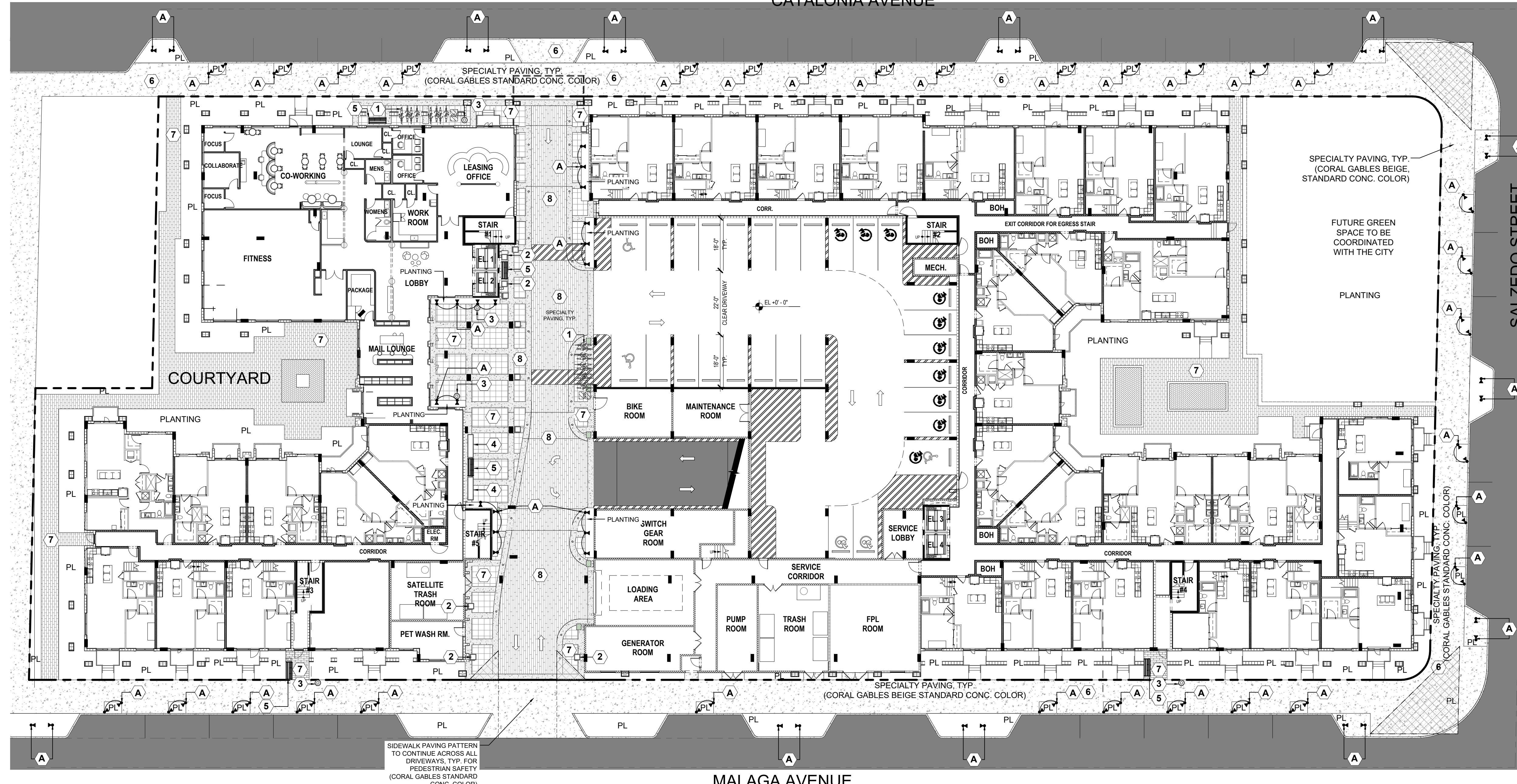


CATALONIA AVENUE

SITE FINISHES / AMENITIES LEGEND



HARDSCAPE PLAN NORTH Scale: 1" = 20'-0"

Table with 11 rows detailing site finishes and amenities. Includes items like Bike Rack, Freestanding Planter, Trash Receptacle, Aluminum Bench, Colored Concrete, Walkway Paver, Driveway Paver, Travertine Paver, Wood Decking, and Decorative Cement Tile. Each row lists manufacturer, style, color, size, and quantity.

WITKIN HULTS + PARTNERS logo and contact information. Includes phone number, website, and address.

TCR TRAMMELL CROW RESIDENTIAL logo.

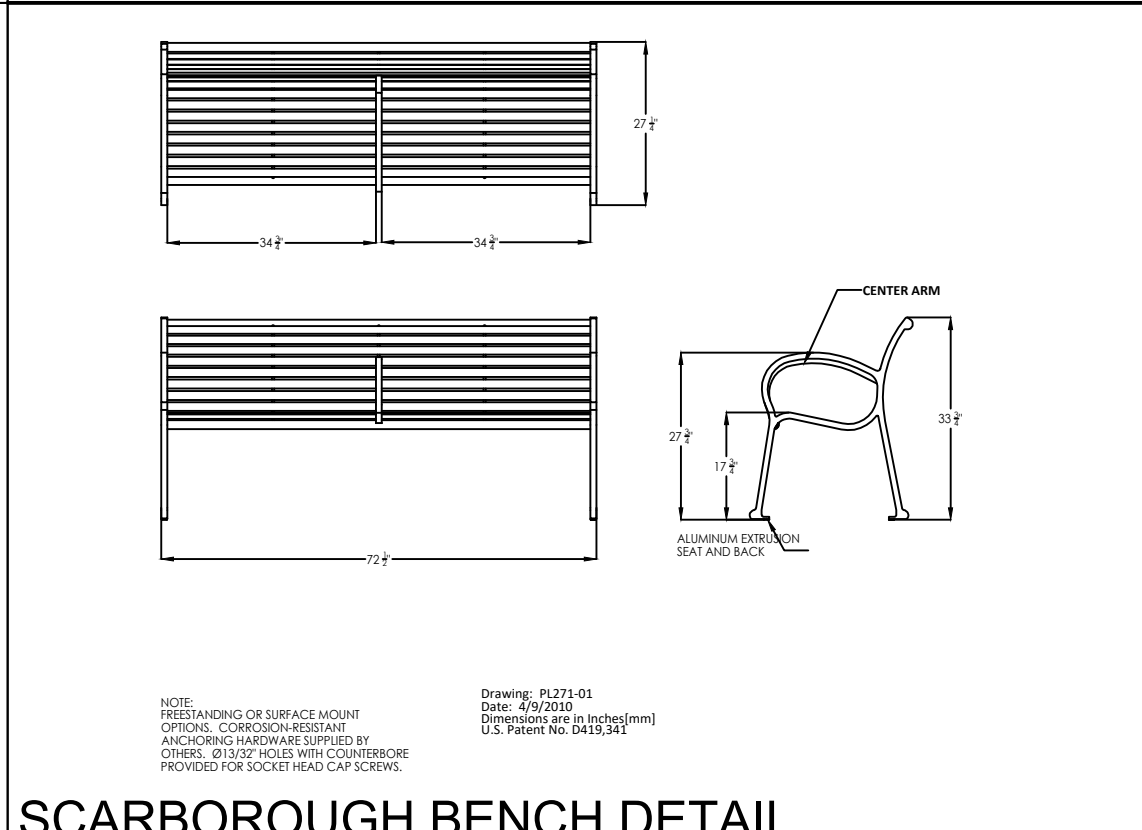
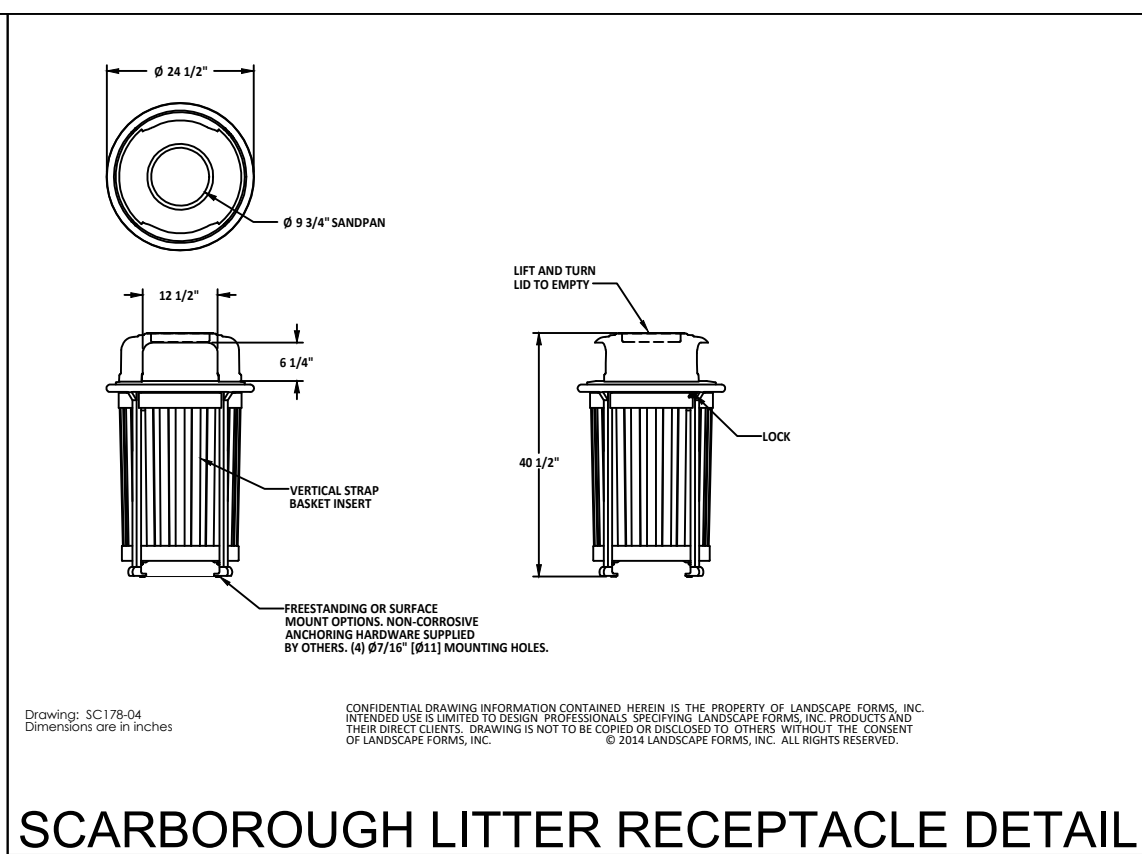
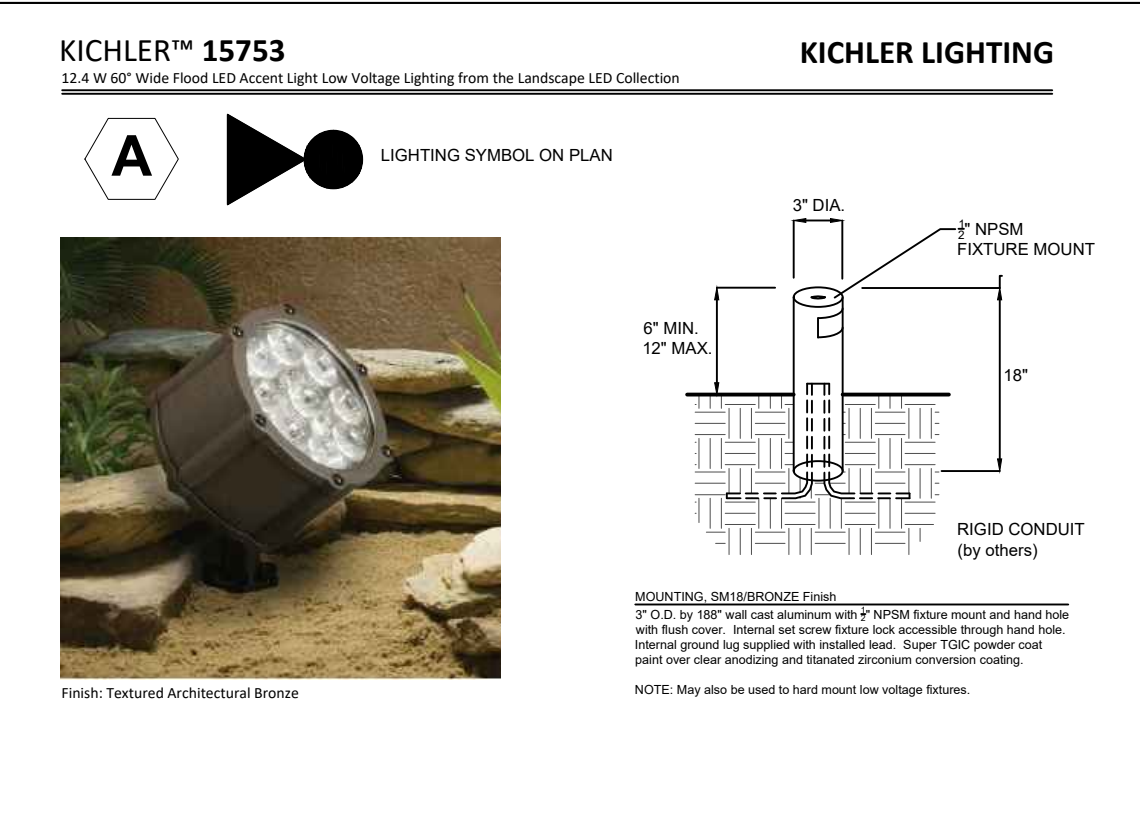
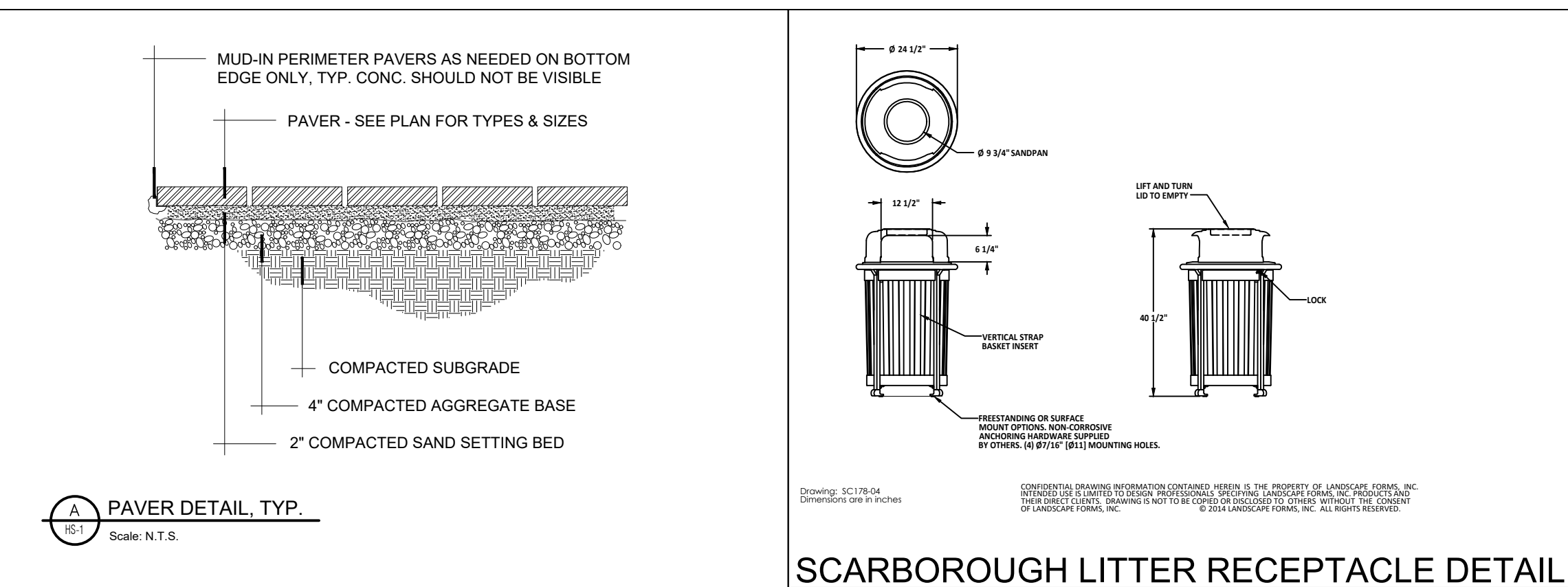
ALEXAN CRAFTS CORAL GABLES, FLORIDA PUBLIC REALM AMENITIES PLAN + GROUND FLOOR HARDSCAPE PLAN Project: SCHEMATIC DESIGN

Revisions table with columns for Revisions, Date, and By.

Lic. # LA0000889 Member: A.S.L.A.

Drawing: Ground Floor Hardscape Plan Date: 06/23/2021 Scale: See Left Drawn by: CE Sheet No.:

HS-1 Cad Id.: 2021-024



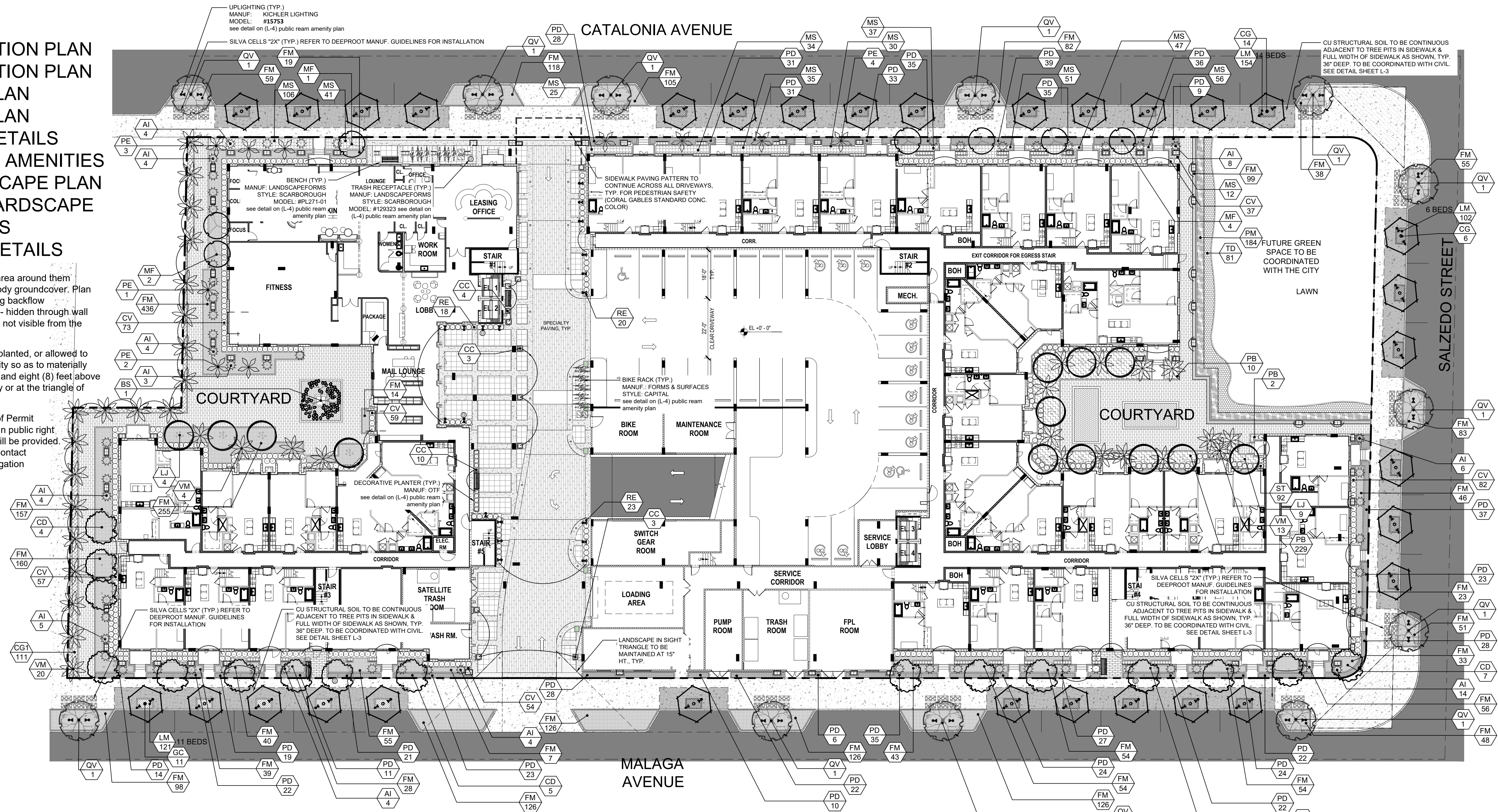
SHEET INDEX:

- TD-1 TREE DISPOSITION PLAN
- TD-2 TREE DISPOSITION PLAN
- L-1 LANDSCAPE PLAN
- L-2 LANDSCAPE PLAN
- L-3 LANDSCAPE DETAILS
- HS-1 PUBLIC REALM AMENITIES PLAN + HARDSCAPE PLAN
- HS-2 POOL DECK HARDSCAPE PLAN + DETAILS
- HS-3 HARDSCAPE DETAILS

Note: Fire hydrants require a 3' minimum clear area around them using Liriope 'Evergreen Giant' or other non-woody groundcover. Plan locations of equipment in the landscape including backflow preventers, hydrants, utility poles, etc. to be well-hidden through wall screening or thick landscape buffers so they are not visible from the street.

Note: Nothing shall be erected, placed, parked, planted, or allowed to grow in such a manner within a triangle of visibility so as to materially impede vision between a height of three (3) feet and eight (8) feet above the established grade, measured at the driveway or at the triangle of visibility and intersection.

Note: An irrigation plan will be provided at time of Permit providing 100% coverage to landscaped areas. In public right of way, 'Rainbird' brand heads and equipment will be provided. No drip irrigation is allowed in the right of way. Contact dbell@coralgables.com for a list of approved irrigation equipment for City right of way.



LANDSCAPE LIST

TREES/PALMS			
SYMBOL	QUAN.	PROPOSED MATERIAL	SPECIFICATIONS
BS	1	Bursera simaruba	16' HT. X 8' SPR. 4" CAL.
		GUMBO LIMBO	F.G.
CD	16	Coccoloba diversifolia	12' HT. X 4' SPR. 2" CAL.
		PIGEON PLUM	F. G.
CG	31	Caesalpinia granadillo	16' HT. X 8' SPR. 4" CAL.
		BRIDALVEIL TREE	F.G., 8' C.T. MIN.
LJ	13	Ligustrum japonicum	10' HT. X 10' SPR., MULTI TRUNK
		JAPANESE PRIVET	F. G.
MF	7	*Myrcianthes fragrans	12' HT. X 5' SPR. 2" CAL.
		SIMPSON'S STOPPER	F.G., MULTI-TRUNK
PE	10	Ptychosperma elegans 'single'	18' O.A. HT., SINGLE
		SINGLE ALEXANDER PALMS	F.G.
QV	12	*Quercus virginiana	16' HT. X 8' SPR. 4" CAL.
		LIVE OAK	F.G.
VM	37	Vecthia montgomeryana 'single'	22' O.A. HT., SINGLE
		SINGLE MONTGOMERY PALM	F.G.

SHRUBS AND GROUNDCOVERS			
SYMBOL	QUAN.	PROPOSED MATERIAL	SPECIFICATIONS
AI	63	Alcantarea imperialis	32" HT. X 32" SPR.
		(BY BULLIS BROMELIADS)	17" POT
CC	20	Chamaedorea cataractarum	24" HT. X 24" SPR. / 24" O.C.
		CAT PALM	7 GAL.
CG1	111	*Clusia gutifera	24" HT. X 24" SPR. / 24" O.C.
		SMALL LEAF CLUSIA	3 GAL.
CV	362	Codiaeum variegatum 'Sloppy Painter'	24" HT. X 24" SPR. / 24" O.C.
		YELLOW-GREEN CROTON	3 GAL.
FM	2,911	Ficus microcarpa 'Green Island'	15" HT. X 15" SPR. / 15" O.C.
		GREEN ISLAND FICUS	3 GAL.
LM	377	Liriope muscari	12" HT. X 12" SPR. / 15" O.C.
		'EVERGREEN GIANT' LIRIOPE	1 GAL.
MS	474	Microsorium scolopendrium	12" HT. X 12" SPR. / 15" O.C.
		WART FERN	1 GAL.
PB	241	Philodendron 'Burlie Marx'	18" HT. X 18" SPR. / 24" O.C.
		BURLE MARX PHILODENDRON	1 GAL.
PD	695	Podocarpus macrophyllus	15" HT. X 15" SPR. / 15" O.C.
		PRINGLES DWARF PODOCARPUS	3 GAL.
PM	184	Podocarpus macrophyllus	36" HT. X 18" SPR. / 18" O.C.
		PODOCARPUS	7 GAL.
RE	61	Rhapis excelsa	36" HT. X 24" SPR. / 24" O.C.
		LADY PALM	7 GAL.
ST	92	Sansevieria trifasciata 'Black Gold'	18" HT. X 18" SPR. / 18" O.C.
		'BLACK GOLD' SANSEVIERIA	3 GAL.
TD	145	*Tripsacum dactyloides	24" HT. X 24" SPR. / 30" O.C.
		FAKAHATCHEE GRASS	3 GAL.
LAWN	As	Stenotaphrum secundatum 'Floratum'	SOLID EVEN SPR.

LANDSCAPE LEGEND Information Required to be Permanently Affixed to Plan			
Zoning District: MX 1		Net Lot Area 2.11 acres 91,933 s.f.	
OPEN SPACE	REQUIRED/ ALLOWED	PROVIDED	
A. Square Feet of open space required by Article 5, Development Standards: Net lot area = 91,933 s.f. x 10 % = 9,193 s.f.	9,193	32,154	
TREES			
A. No. of Trees required: 28 x 2.11 = 59	59	59	
B. % Palms Allowed: No. Trees required x 25% =	15	15	
C. % Natives required: No. Trees required x 30% =	18	18	
STREET TREES (maximum average spacing of 35' o.c.):			
A. 191 linear feet along Salzedo Street =	5	6	
B. 325 linear feet along Catalonia Avenue =	9	14	
C. 379 linear feet along Malaga Avenue =	11	11	
D. Total Trees Required	84	91	
SHRUBS			
A. No. trees required x 10= No. of shrubs required	840	840+	

LANDSCAPE PLAN NORTH

Scale: 1" = 20'-0"



WITKIN HULTS + PARTNERS
 307 W. Palm Beach Blvd., Suite 100
 Palm Beach, FL 33480
 Phone: 561.823.9881 Fax: 561.823.9889
 www.witkindesign.com

©2020 WITKIN HULTS + PARTNERS
 THE DESIGN AND DRAWINGS HEREIN ARE THE
 INTELLECTUAL PROPERTY OF THIS
 LANDSCAPE ARCHITECT AND ARE PROTECTED
 UNDER THE COPYRIGHT PROTECTION ACT

TCR
 TRAMMELL CROW RESIDENTIAL

ALEXAN CRAFTS
 CORAL GABLES, FLORIDA
 LANDSCAPE PLAN

Project: SCHEMATIC DESIGN

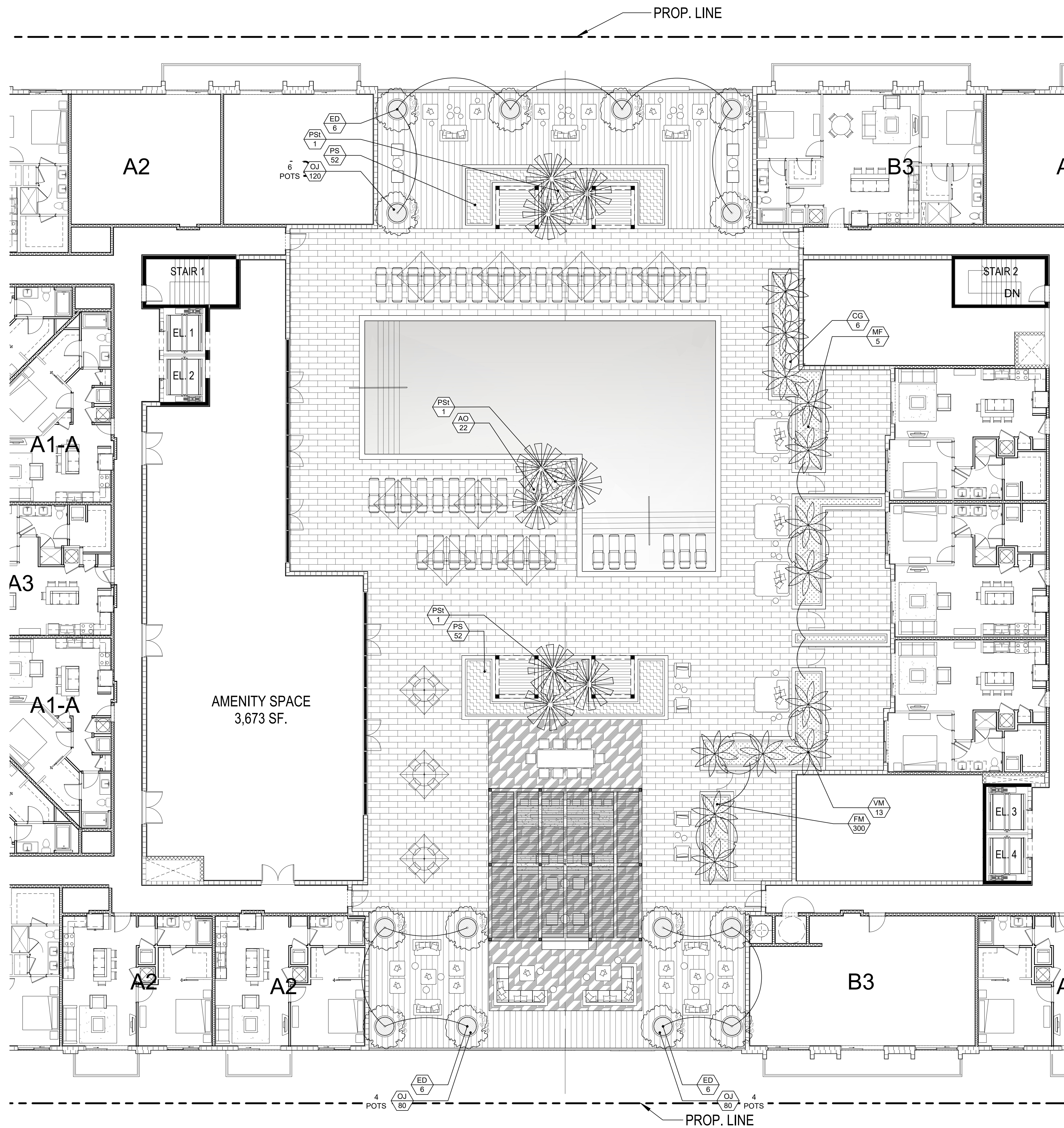
Revisions:	Date:	By:

Seal:

Lic. # LA000889
 Member: A.S.L.A.

Drawing: Landscape Plan
 Date: 06/23/2021
 Scale: See Left
 Drawn by: CE
 Sheet No.:
 Cad Id.: 2021-024

L-1



LANDSCAPE LIST LEVEL 7 POOL DECK

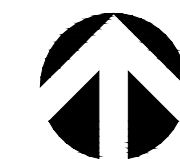
TREES/PALMS		
SYMBOL	QUAN.	SPECIFICATIONS
ED	18	Elaeocarpus decipiens 12" HT. X 5" SPR. 2" DBH., 4' C.T. MIN.
		JAPANESE BLUEBERRY TREE F.G., STANDARD, SINGLE LEADER
MF	5	*Myrcianthes fragrans 12" HT. X 5" SPR. 2" CAL.
		SIMPSON'S STOPPER F.G., MULTI-TRUNK
PSt	3	Phoenix sylvestris 'Triple' 12' C.T.
		TRIPLE SILVER DATE PALM F.G., TRIPLE
VM	13	Veitchia montgomeryana 'single' 28" O.A. HT. MIN.,
		SINGLE MONTGOMERY PALM F.G.
SHRUBS AND GROUNDCOVERS		
SYMBOL	QUAN.	SPECIFICATIONS
AO	22	Alcantarea odorata 32" HT. X 32" SPR. / 30" O.C.
		SILVER-BLUE BROMELIAD 17" POT
CG	6	*Clusia guttifera 36 HT. X 36" SPR. / 36" O.C.
		SMALL LEAF CLUSIA 7 GAL.
FM	300	Ficus microcarpa 'Green Island' 15" HT. X 15" SPR. / 15" O.C.
		GREEN ISLAND FICUS 3 GAL.
OJ	280	Ophiopogon japonicus 6" HT. X 6" SPR. / 6" O.C.
		MONDO GRASS 1 GAL.
PS	104	Pennisetum setaceum 'Alba' 18" HT. X 18" SPR. / 24" O.C.
		WHITE FOUNTAIN GRASS 3 GAL.

* DENOTES NATIVE SPECIES

LANDSCAPE PLAN- LEVEL 7 POOL DECK

Scale: 1" = 10'-0"

NORTH



WITKIN HULTS + PARTNERS
 307 W. 10th Street
 Phone: 954.923.8981 Fax: 954.923.9889
 www.witkindesign.com

©2020 WITKIN HULTS + PARTNERS
 THE DESIGN AND DRAWINGS HEREIN ARE THE
 INTELLECTUAL PROPERTY OF THIS
 LANDSCAPE ARCHITECT AND ARE PROTECTED
 UNDER THE COPYRIGHT PROTECTION ACT

TCR
 TRAMMELL CROW RESIDENTIAL

ALEXAN CRAFTS
 CORAL GABLES, FLORIDA
 LANDSCAPE PLAN
 POOL DECK

Project:

Revisions:	Date:	By:

Seal:

Lic. # LA000889
 Member: A.S.L.A.

Drawing: Landscape Plan
 Date: 06/23/2021
 Scale: See Left
 Drawn by: CE
 Sheet No.:
L-2
 Cad Id.: 2021-024

