

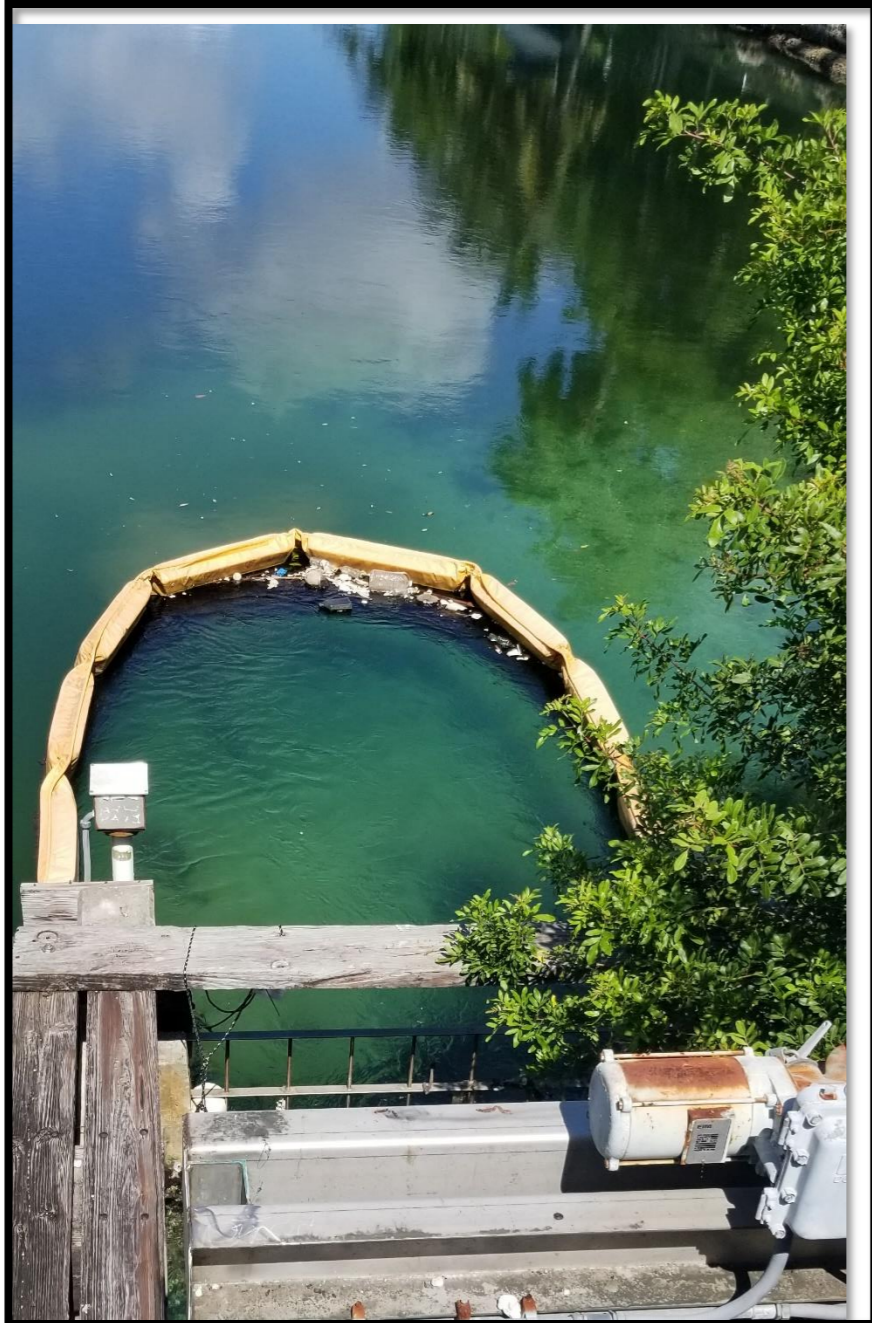
*Downtown
Stormwater Grates*

APRIL 26, 2022

CORAL
GABLES[®]
THE CITY BEAUTIFUL



RIVIERA OUTFALL BASIN



- The Riviera Drive outfall is the City's largest direct stormwater discharge into the Coral Gables Waterway.
- It measures 66-inches at its narrowest section.
- It discharges a significant portion of Downtown Coral Gables, including sections of Le Jeune Road, Ponce de Leon Boulevard, and adjacent neighborhoods.
- The basin includes approximately 500 inlets.

GRATES AND BASKETS

INSTALLATION

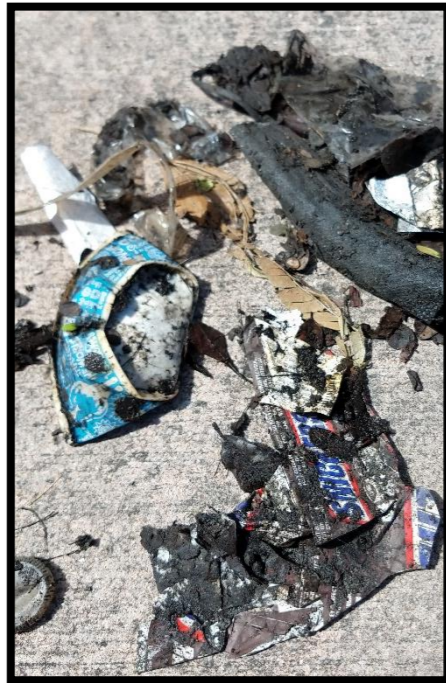
- S.O.P. Technologies installed (7) grates and (3) baskets between February and May 2021 as a pilot project.
- Debris from baskets was removed, sorted and weighted quarterly for a year.



COLLECTION

2

2



BASKETS



- Collected organics, glass, metal and plastic cans, wrappers and cigarette buds.
- 96-99 % of debris collected by weight were organic materials.
- Average collection of 162 lbs. / basket / year.
- Estimated cost from S.O.P. Technologies to install 500 baskets is \$536,000.
- Estimated over \$100,000 per year in quarterly inlet cleaning with contractor vs. every 4 years as required by NPDES permit.

GRATES



- Effectively prevents larger items from being introduced into the drainage system.
- Unable to measure volumes due to regular downtown street sweeping.
- Street sweeper collected just under 1.2 million lbs. of debris in 2021.
- Estimated cost from S.O.P. Technologies to install 500 grates is \$230,500.

NEXT STEPS



- New need request for the procurement and installation of 500 grates in the Downtown Riviera drainage basin will be added for consideration in FY23 budget.
- Installation may need to be spread over multiple years, subject to the availability of funds.
- If approved by City Commission, project will be placed for bid after budget approval.

Thank you!



CORAL
GABLES
THE CITY BEAUTIFUL