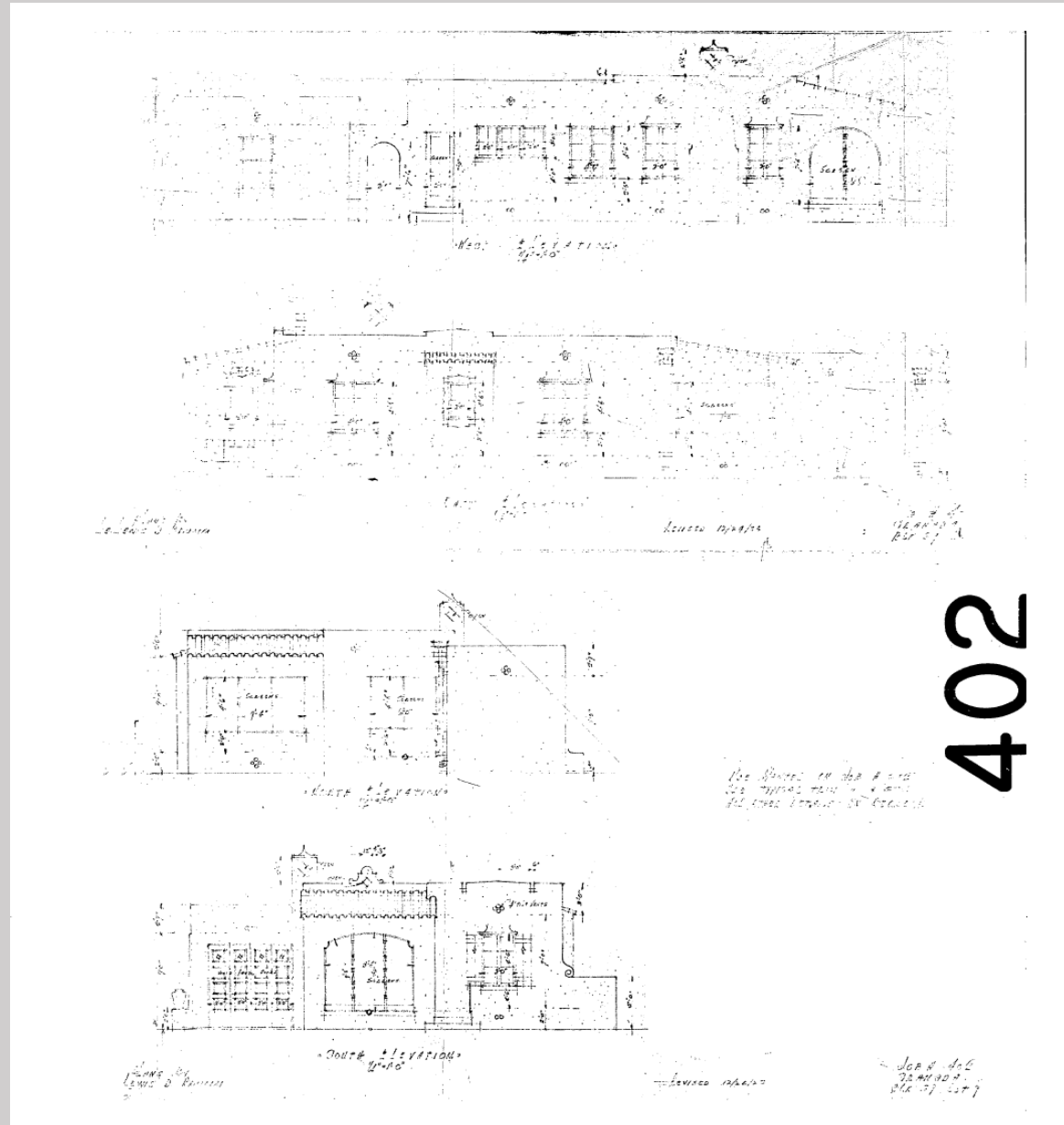


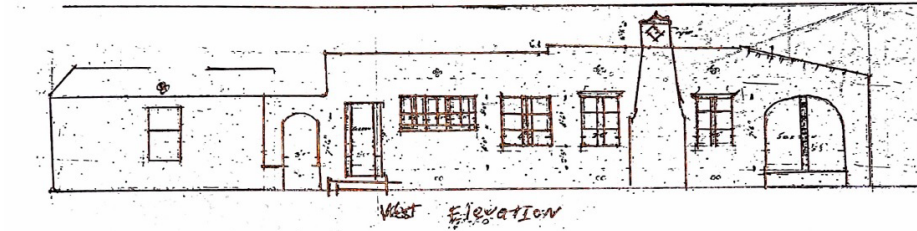


1221 MILAN AVE

Original House Plan



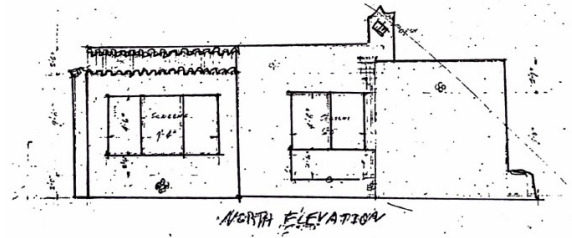
Original House sketch



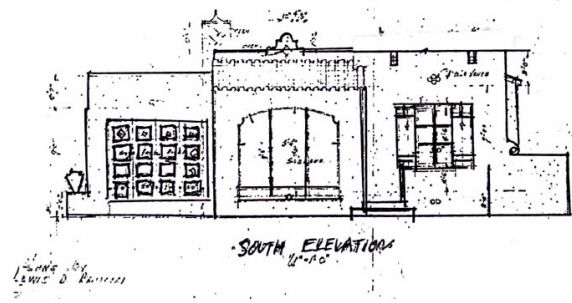
WEST ELEVATION



EAST ELEVATION



NORTH ELEVATION



SOUTH ELEVATION

402

See sketch on page 401
See sketch on page 402
See sketch on page 403

JAN 2
1884



1922



1) Awning added

2) Awning added

3) Decorative feature removed

4) Front porch added

5) Decorative feature removed

6) Changed from screens to windows

7) Shutters removed

8) Barrel tiles removed

9) Decorative garage door removed

10) Casement window

replaced by jalousie

11) Chimney altered

12) Planter added

13) Window frame changed

14) Window opening reduced

15) S-tile roof added

16) Front porch enclosed

17) New stairs

18) New door

19) New windows

20) New S-tile roof

1922



- 21) Window removed
- 22) Loggia removed
- 23) Door removed
- 24) Casement windows removed
- 25) Shutter removed
- 26) Screen replaced by window
- 27) Vase and pedestal removed
- 28) Porch added
- 29) Door added
- 30) Window opening reduced

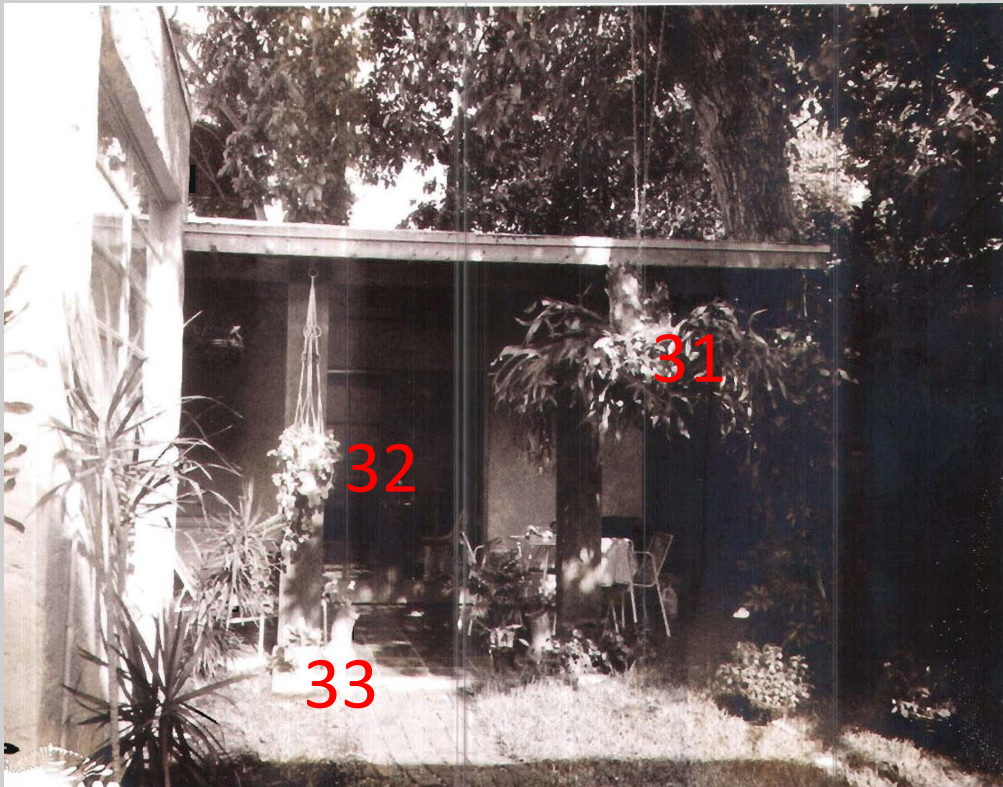
2023



1922



1982



- 31) Screened in porch added
- 32) French door added
- 33) Detached garage attached

1922



- 34) Casement windows removed and replaced with jalousie
- 35) Shutters removed
- 36) Decorative window sill and hood removed
- 37) Screen replaced by window
- 38) Barrel tiles removed
- 39) Pyramid-shaped parapet removed

2023



1922



- 40) Barrel tiles removed
- 41) Screen window removed
- 42) French door removed
- 43) Porch enclosed
- 44) Decorative vent removed
- 45) Windows added

2023



ALL THE HOME'S CHANGES

- 1) Awning added
- 2) Awning added
- 3) Decorative feature removed
- 4) Front porch added
- 5) Decorative feature removed
- 6) Changed from screens to windows
- 7) Shutters removed
- 8) Barrel tiles removed
- 9) Decorative garage door removed
- 10) Casement window replaced by jalousie
- 11) Chimney altered
- 12) Planter added
- 13) Window frame changed
- 14) Window opening reduced
- 15) S-tile roof added
- 16) Front porch enclosed
- 17) New stairs
- 18) New door
- 19) New windows
- 20) New S-tile roof
- 21) Window removed
- 22) Loggia removed
- 23) Door removed
- 24) Casement windows removed
- 25) Shutter removed
- 26) Screen replaced by window
- 27) Vase and pedestal removed
- 28) Porch added
- 29) Door added
- 30) Window opening reduced
- 31) Screened in porch added
- 32) French door added
- 33) Detached garage attached
- 34) Casement windows removed and replaced with jalousie
- 35) Shutters removed
- 36) Decorative windowsill and hood removed
- 37) Screen replaced by window
- 38) Barrel tiles removed
- 39) Pyramid-shaped parapet removed
- 40) Barrel tiles removed
- 41) Screen window removed
- 42) French door removed
- 43) Porch enclosed
- 44) Decorative vent removed
- 45) Windows added



1221 Milan Ave



1221 Milan Ave



1207 Genoa



831 Capri



1221 Milan Ave

***Why Old Places Matter.* Thompson Mayes**

“I came to realize that we save old places not for the places themselves, but for what they can do for people. This idea became the central focus of the National Trust’s guidebook for the next fifty years, *Preserving For People – A Vision For The Future.*” Though this idea may seem obvious to those who are not practicing professionals in historic preservation, it represents a profound philosophical shift for the field. It encourages us to see through the bricks and mortar of an old place to focus on how these places help people flourish.” -- Epilogue p. 112