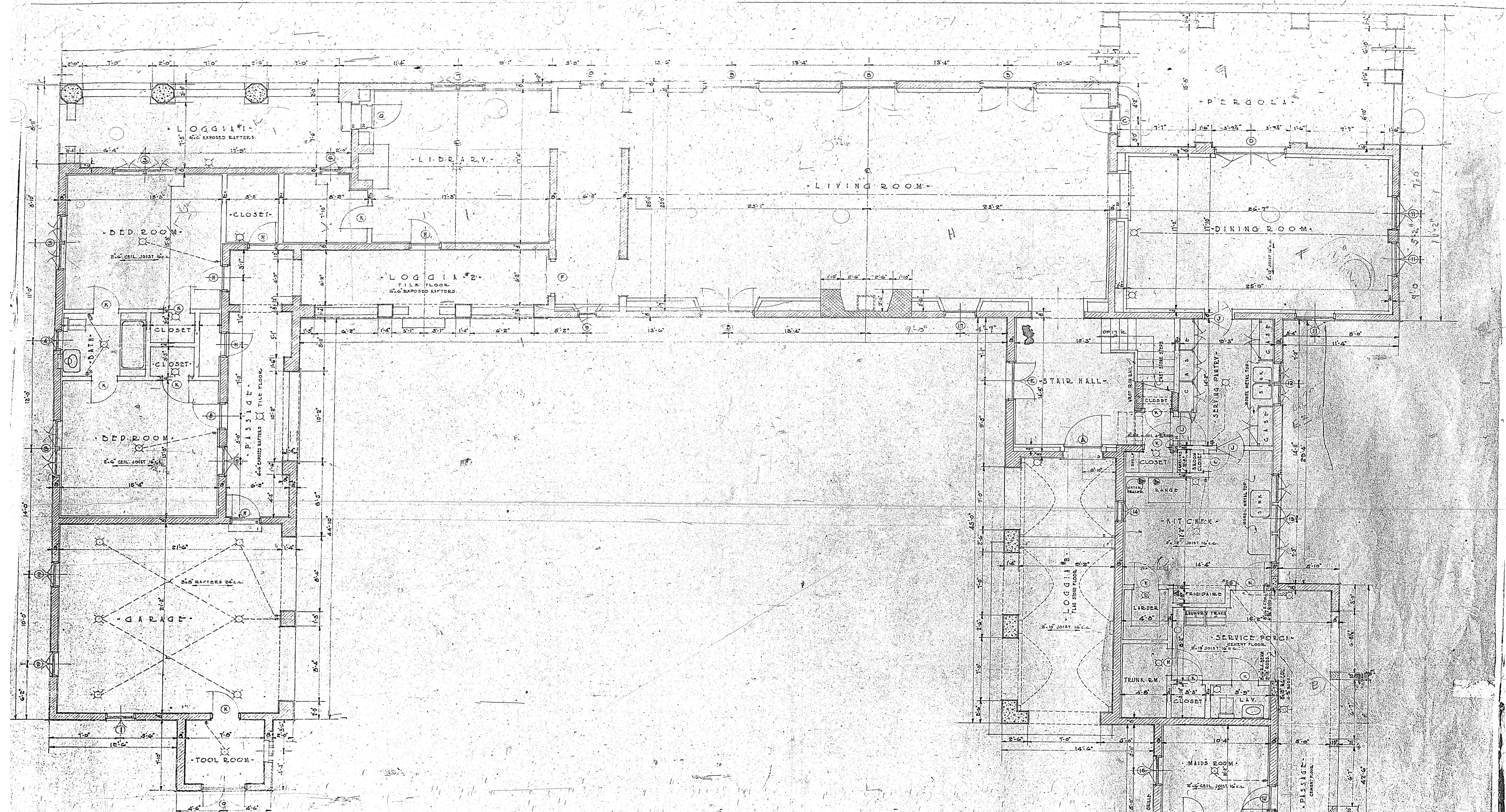


Garage Alteration for  
 Mr. John W. Moon  
 3800 Granada Blvd  
 Lots 112, 113, 114 Block 50  
 County Club #

1341





MARK	WIDE	HIGH	THICK	DESCRIPTION	LIGHTS
1	1'-5"	4'-0"	1/2"	PAIR	4
2	1'-5"	3'-0"	DO.	DO.	4
3	1'-5"	4'-0"	DO.	DO.	4
4	1'-0"	3'-0"	DO.	MULLION	4
5	1'-0"	3'-0"	DO.	DO.	3
6	1'-6"	4'-0"	DO.	DO.	2
7	1'-5"	4'-0"	DO.	DO.	4
8	1'-0"	4'-0"	DO.	DOUBLE TR. CIR. HEAD	4
9	1'-0"	8'-0"	DO.	ARCH HEAD - LEADED GLASS	DO.
10	DO.	DO.	DO.	DO.	DO.
11	1'-5"	5'-0"	DO.	DO.	5
12	1'-0"	4'-0"	DO.	DO.	4
13	1'-0"	4'-0"	DO.	DO.	4
14	1'-0"	2'-0"	DO.	CIR. HEAD OPEN IN	2
15	1'-6"	4'-0"	DO.	DO.	2
16	1'-6"	2'-0"	DO.	DO.	2
17	3'-0"	2'-0"	DO.	LEADED GLASS	3
18	1'-5"	3'-0"	DO.	DO.	4
19	1'-5"	4'-0"	DO.	DO.	4
20	1'-0"	2'-0"	DO.	DO.	1
21	2'-0"	7'-0"	DO.	DO.	12

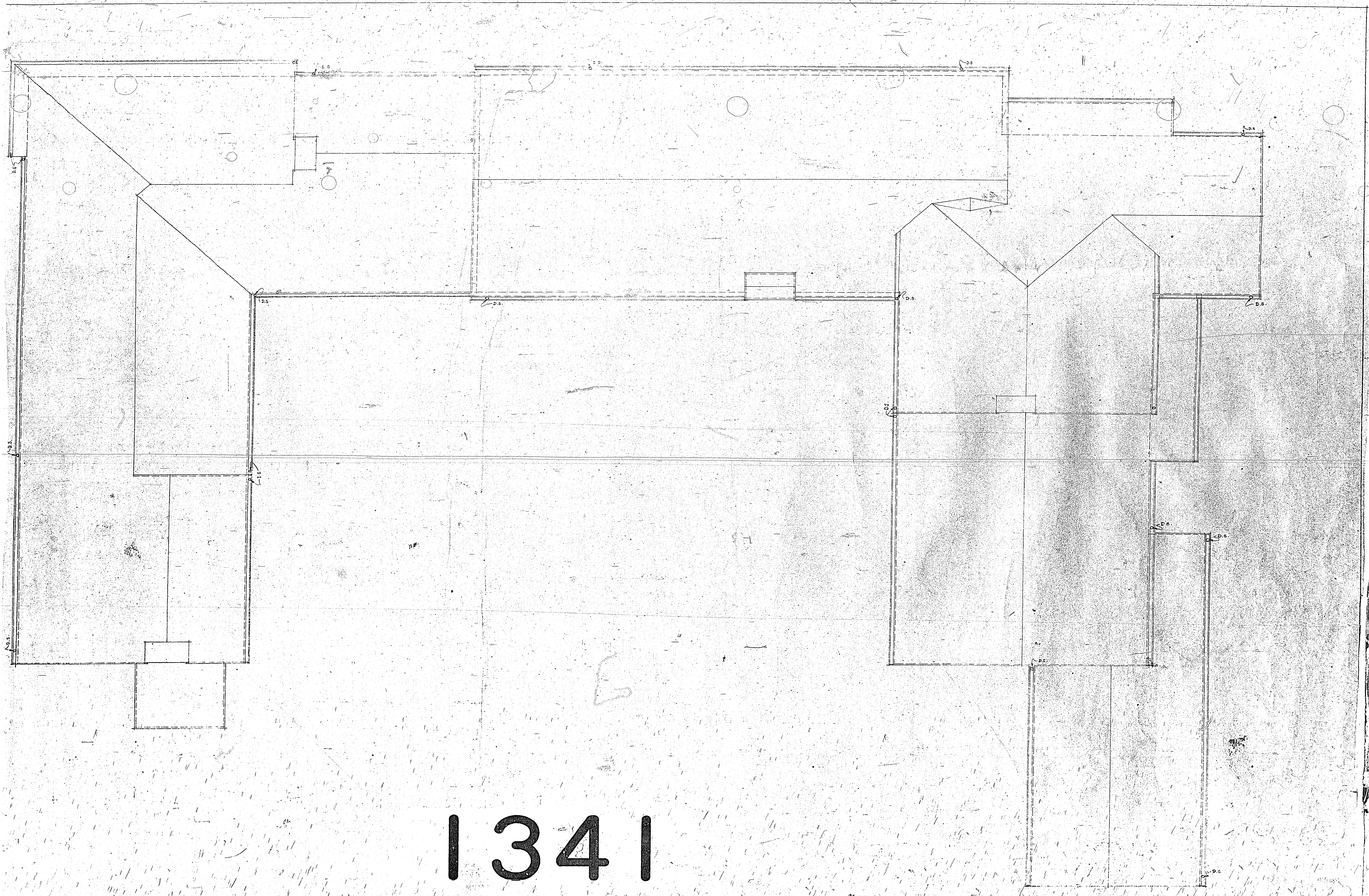
MARK	WIDE	HIGH	THICK	DESCRIPTION	LIGHTS
A	5'-6"	7'-5"	2 1/2"	3 PLY DATTON CIR. HEAD	12
B	2'-0"	7'-5"	1 1/2"	PAIR 4LT. TR.	12
C	2'-0"	7'-5"	1 1/2"	LEADED GLASS DO.	6
D	2'-0"	7'-5"	1 1/2"	4 DOORS	12
E	3'-0"	7'-5"	2 1/2"	3 PLY DATTON CIR. HEAD	12
F	3'-0"	7'-5"	2 1/2"	DO.	10
G	3'-0"	7'-5"	2 1/2"	DO.	10
H	3'-0"	7'-5"	2 1/2"	DO.	10
I	3'-0"	7'-5"	2 1/2"	DO.	10
J	3'-0"	7'-5"	2 1/2"	DO.	10
K	3'-0"	7'-5"	2 1/2"	DO.	10
L	3'-0"	7'-5"	2 1/2"	DO.	10
M	3'-0"	7'-5"	2 1/2"	DO.	10
N	3'-0"	7'-5"	2 1/2"	DO.	10
O	3'-0"	7'-5"	2 1/2"	DO.	10
P	3'-0"	7'-5"	2 1/2"	DO.	10
Q	3'-0"	7'-5"	2 1/2"	DO.	10
R	3'-0"	7'-5"	2 1/2"	DO.	10
S	3'-0"	7'-5"	2 1/2"	DO.	10
T	3'-0"	7'-5"	2 1/2"	DO.	10
U	3'-0"	7'-5"	2 1/2"	DO.	10
V	3'-0"	7'-5"	2 1/2"	DO.	10
W	3'-0"	7'-5"	2 1/2"	DO.	10
X	3'-0"	7'-5"	2 1/2"	DO.	10
Y	3'-0"	7'-5"	2 1/2"	DO.	10
Z	3'-0"	7'-5"	2 1/2"	DO.	10

1341



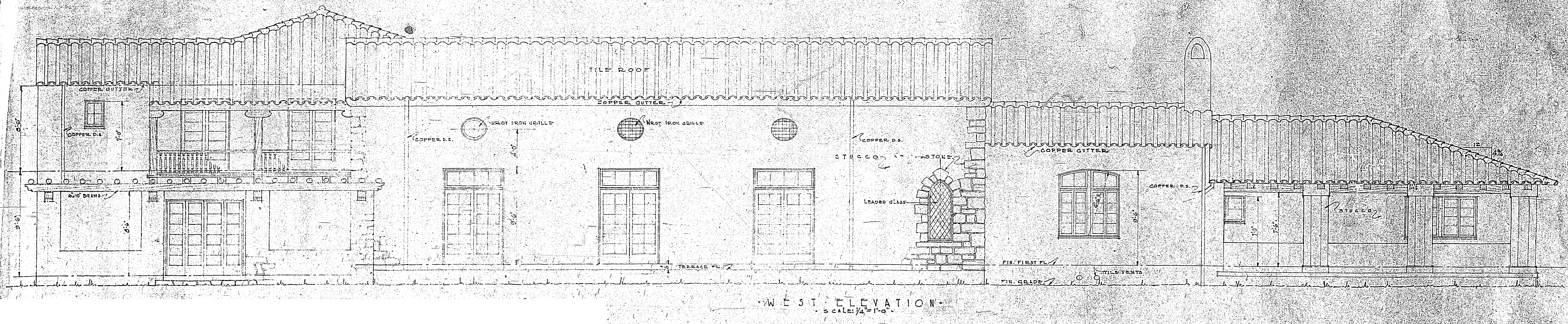
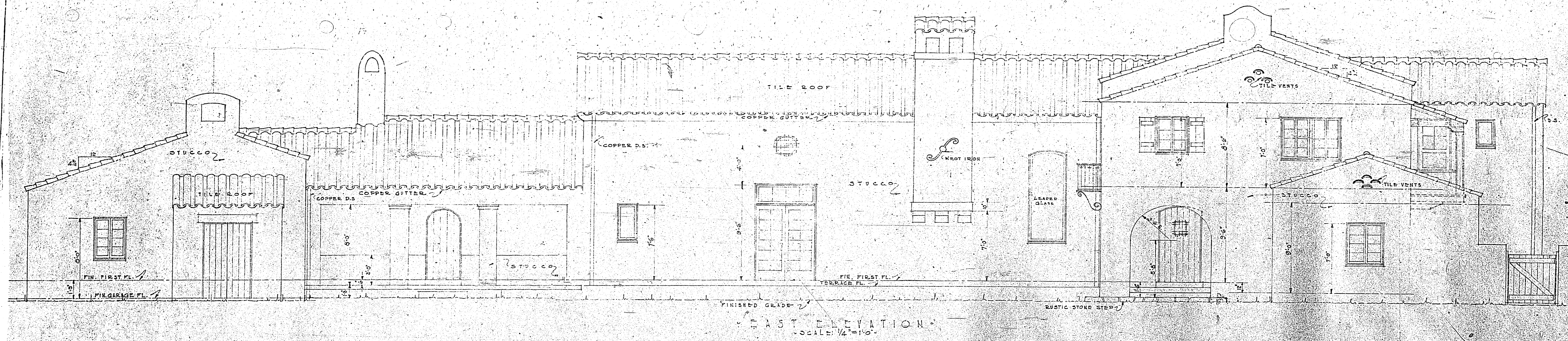






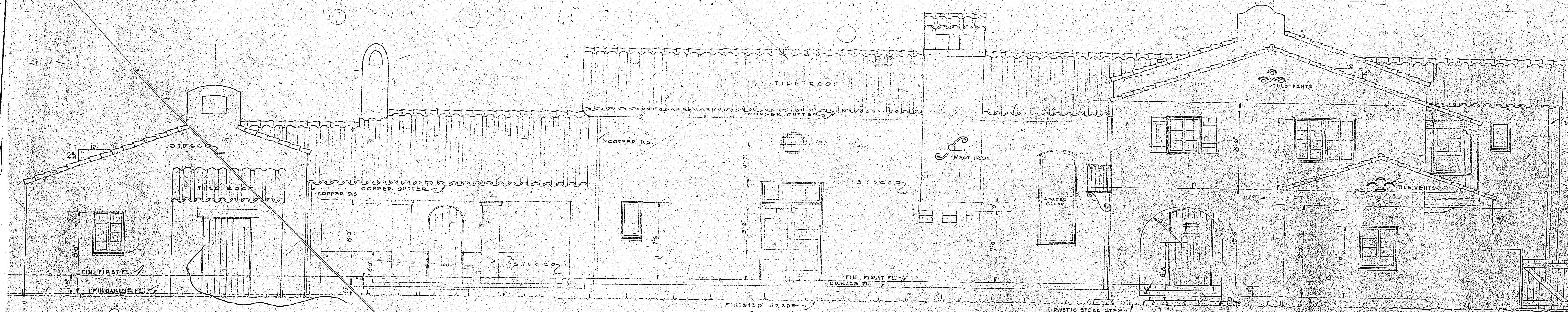
1341



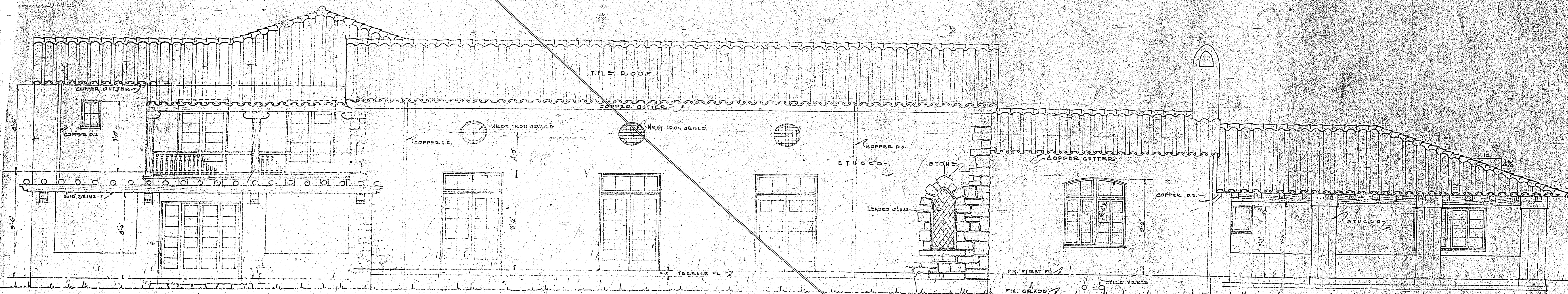


1341





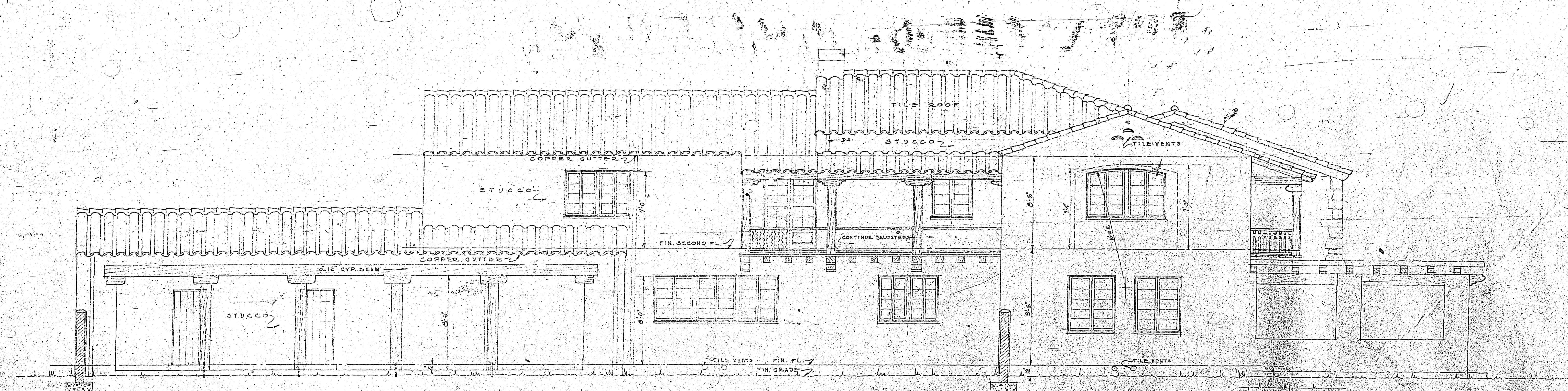
EAST ELEVATION  
SCALE: 1/4" = 1'-0"



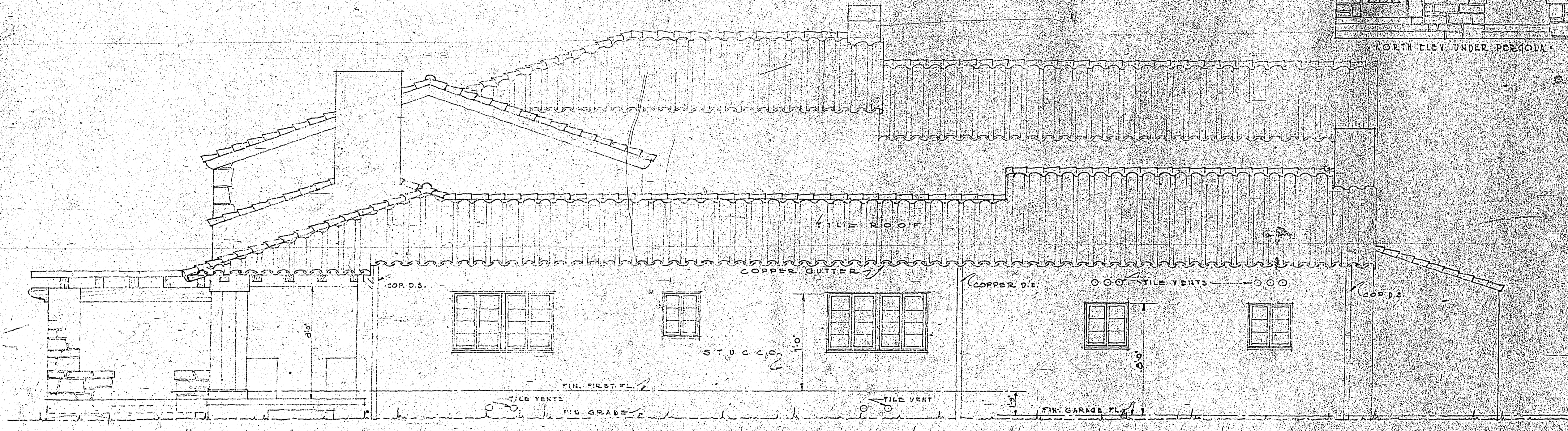
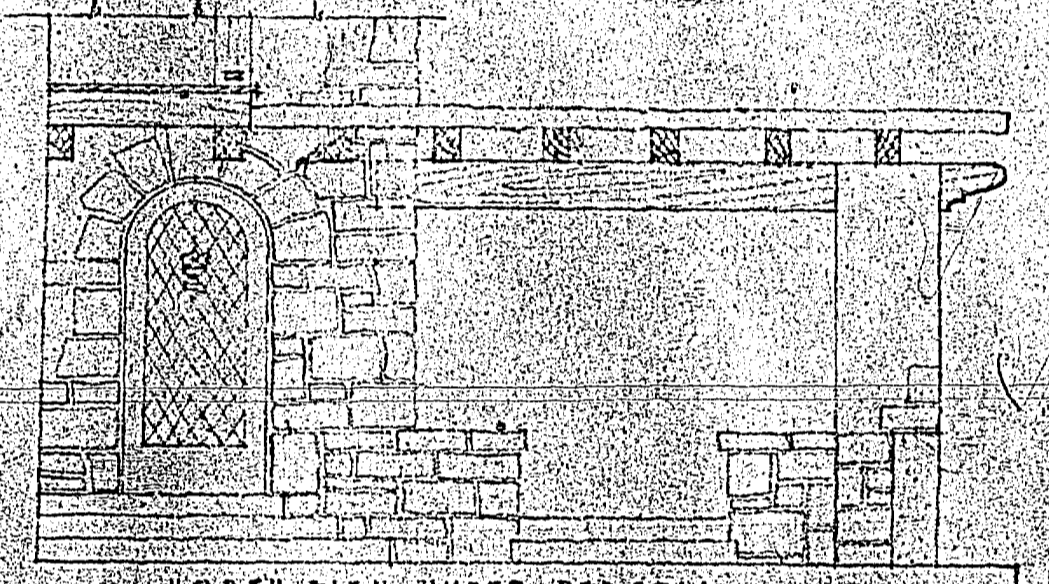
WEST ELEVATION  
SCALE: 1/4" = 1'-0"

1341





NORTH ELEVATION  
SCALE: 1/4" = 1'-0"



SOUTH ELEVATION  
SCALE: 1/4" = 1'-0"

1341

AUG 15 1926	RESIDENCE MAJOR REGINALD OWEN CORAL GABLES, FLA.	COMM. 258
DRAWN BY	ROBERT L. WELLS	SHEET NO.