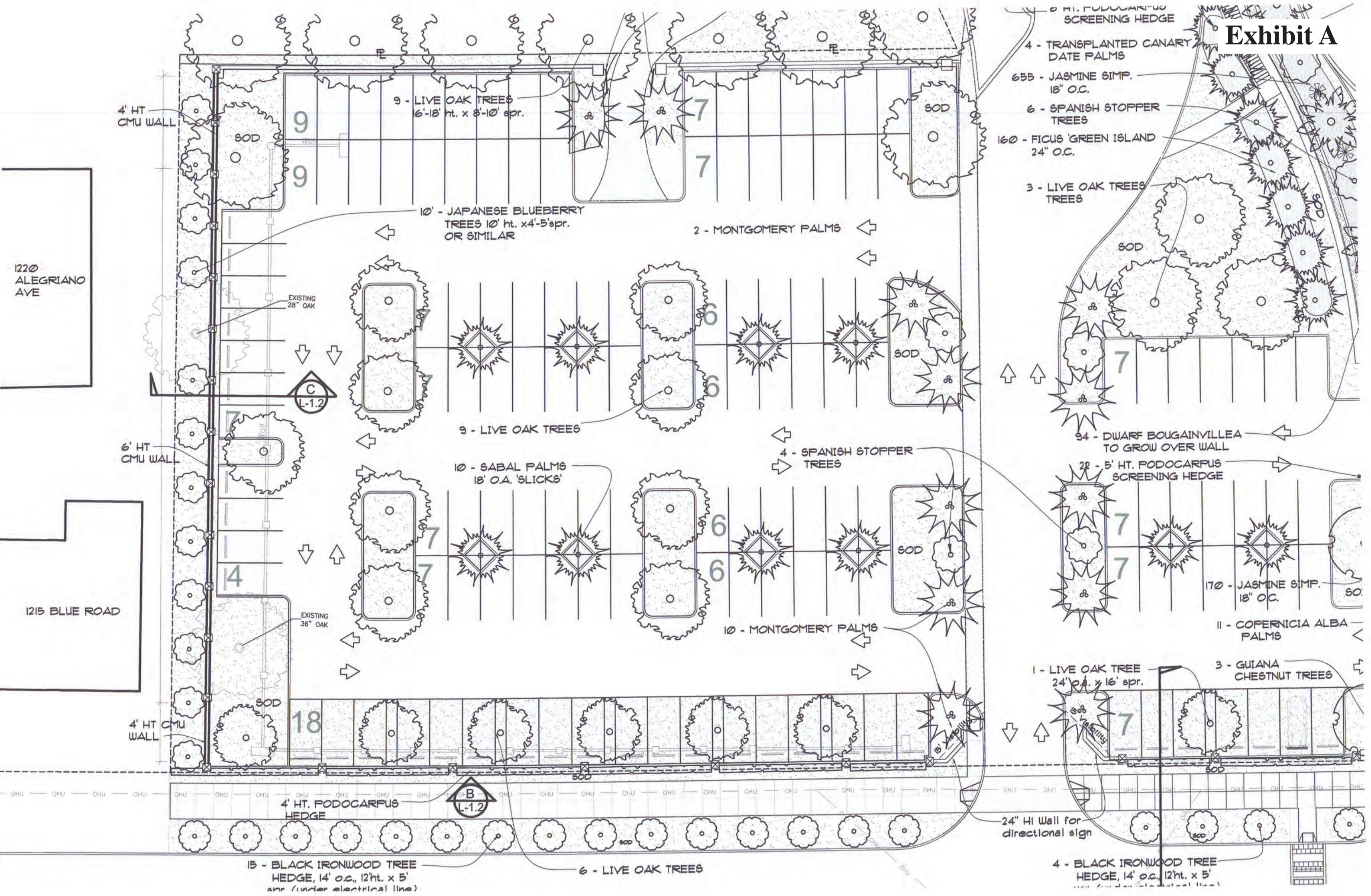


Exhibit A



- 0 HT. FODOCARPUS SCREENING HEDGE
- 4 - TRANSPLANTED CANARY DATE PALMS
- 655 - JASMINE SIMP. 18" O.C.
- 6 - SPANISH STOPPER TREES
- 160 - FICUS 'GREEN ISLAND' 24" O.C.
- 3 - LIVE OAK TREES
- 9 - LIVE OAK TREES 16'-18' ht. x 8'-10' spr.
- 10' - JAPANESE BLUEBERRY TREES 10' ht. x 4'-5' spr. OR SIMILAR
- 2 - MONTGOMERY PALMS
- 9 - LIVE OAK TREES
- 10 - SABAL PALMS 18' O.A. 'SLICKS'
- 4 - SPANISH STOPPER TREES
- 94 - DWARF BOUGAINVILLEA TO GROW OVER WALL
- 22 - 5' HT. FODOCARPUS SCREENING HEDGE
- 10 - MONTGOMERY PALMS
- 170 - JASMINE SIMP. 18" O.C.
- 11 - COPERNICIA ALBA PALMS
- 1 - LIVE OAK TREE 24' O.A. x 16' spr.
- 3 - GUIANA CHESTNUT TREES
- 24" Hi Wall for directional sign
- 4 - BLACK IRONWOOD TREE HEDGE, 14' o.c., 12' ht. x 5' spr. (under electrical line)
- 6 - LIVE OAK TREES
- 4 - BLACK IRONWOOD TREE HEDGE, 14' o.c., 12' ht. x 5' spr. (under electrical line)