

RENTABLE AREA CALCULATIONS				
UNIT MIX/ AREA BREAKDOWN				
Units	Gross Area	Quantity	Total gross area	Average gross area
STUDIOS				
S-1	587	6	3,522	
S-2	535	9	4,815	
S-2A	547	18	9,846	
S-2B	505	3	1,515	
S-3	505	1	505	
S-4	556	1	556	
S-5	594	9	5,346	
S-6	562	1	562	
S-7	560	1	560	
S-8	569	1	569	
Total Studios		50	27,796	556
1 BEDROOM UNIT				
A-1	603	1	603	
A-2	609	1	609	
A-2A	611	1	611	
A-2B	607	1	607	
A-2C	607	1	607	
A-2D	607	1	607	
A-3	666	1	666	
A-4	617	1	617	
A-5	729	9	6,561	
A-6	557	9	5,013	
A-7	745	9	6,705	
A-8	671	9	6,039	
A-9	689	1	689	
A-10	725	1	725	
A-11	813	1	813	
Total - 1 Bed Unit		47	31,472	670
1 BEDROOM/DEN UNITS				
D-1	862	1	862	
D-2	769	1	769	
D-3	864	1	864	
D-4	825	6	4,950	
D-5	744	1	744	
D-6	786	1	786	
D-7	778	1	778	
Total 1 Bed/Den Unit		12	9,753	813
2 BEDROOM UNITS				
B-1	860	9	7,740	
Total 2 Bed Units		9	7,740	860
Total Units		118	76,761	651
RETAIL SPACE				
			Total Gross Area	
Retail Area			8,195	
Retail Storage Area			269	
Total			8,464	
STORAGE UNITS				
	Quantity		Total Gross Area	
2nd Floor	21		620	
3rd Floor	33		1209	
4th Floor	21		620	
Total	75		2,449	



CORWIL ARCHITECTS
4210 LAGUNA ST. CORAL GABLES FL. 33146
LIC. NO. AA-C002151 T. 305.448.7383

PROJECT:
GABLES LIVING
390 BIRD ROAD
CORAL GABLES
FLORIDA 33146

OWNER:

SECOND FLOOR PLAN

PHASE
PLANNING BOARD
SUBMITTAL

REVISIONS

SEAL

THE DRAWINGS IS THE PROPERTY OF CORWIL ARCHITECTS INC.
UNLESS OTHERWISE PROVIDED FOR BY CONTRACT,
THE CONTENTS OF THIS DRAWINGS ARE CONFIDENTIAL
AND SHALL NOT BE TRANSMITTED TO ANY OTHER PARTY
EXCEPT AS AGREED TO BY THE ARCHITECT/ENGINEERS.

DATE: JANUARY 2018

JOB NO. 2016-54

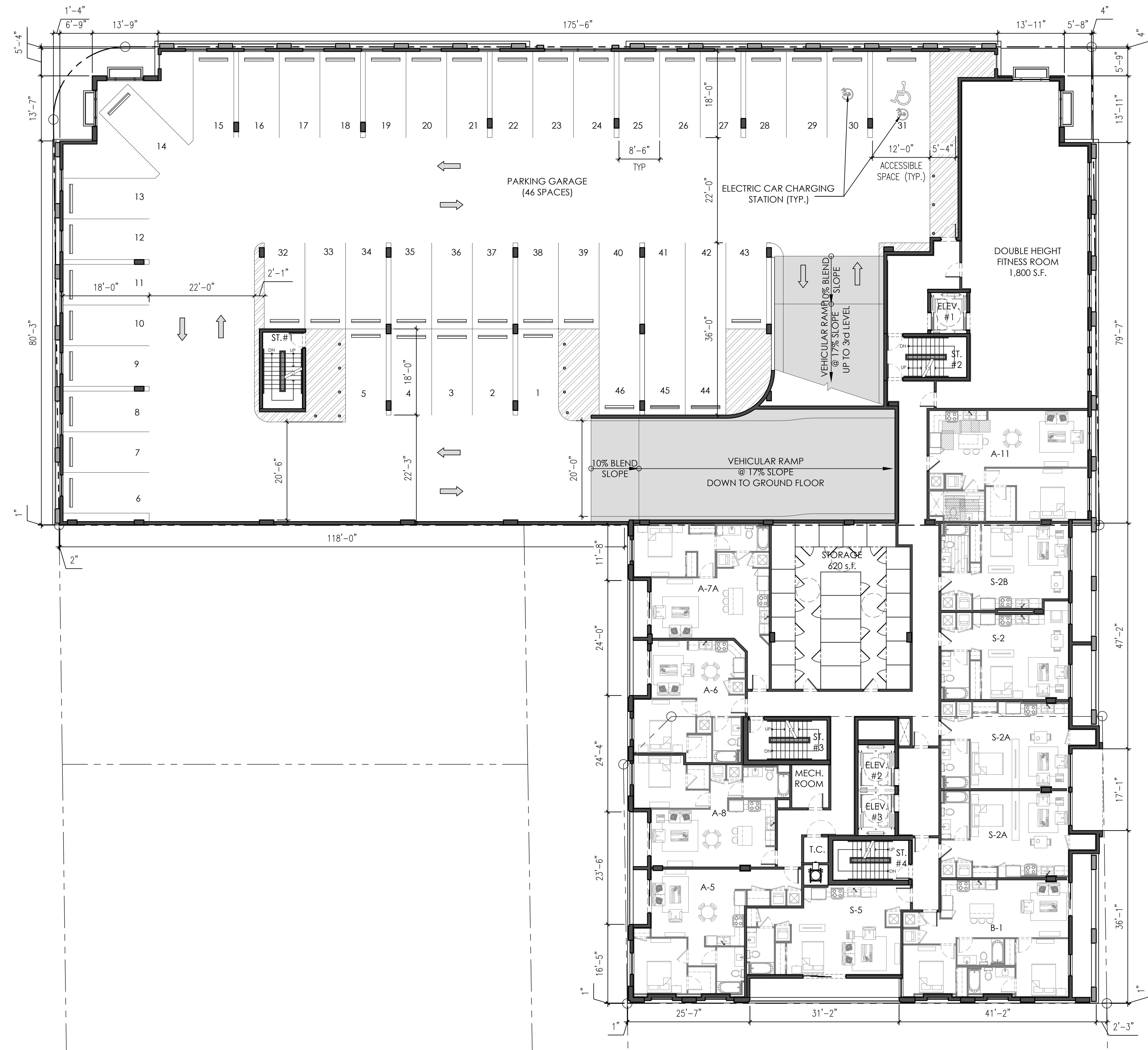
DRAWN BY M.C./G.L./MA

APPR BY AMC

FILE

SHEET NUMBER:

A-2.02



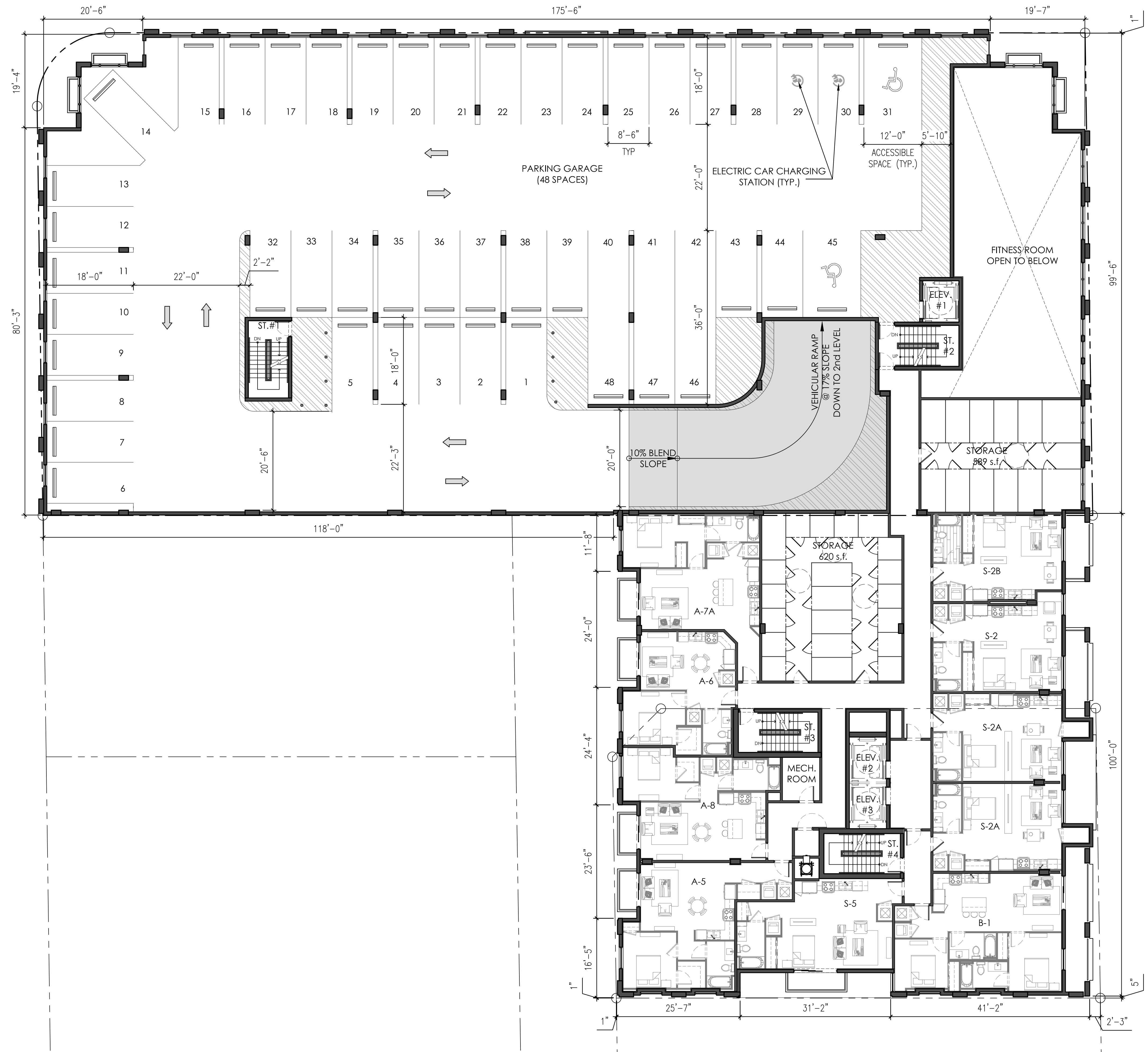
SECOND FLOOR PLAN
SCALE: 3/32"=1'-0"

RENTABLE AREA CALCULATIONS

UNIT MIX/ AREA BREAKDOWN

Units	Gross Area	Quantity	Total gross area	Average gross area
STUDIOS				
S-1	587	6	3,522	
S-2	535	9	4,815	
S-2A	547	18	9,846	
S-2B	505	3	1,515	
S-3	505	1	505	
S-4	556	1	556	
S-5	594	9	5,346	
S-6	562	1	562	
S-7	560	1	560	
S-8	569	1	569	
Total Studios		50	27,796	556
1 BEDROOM UNIT				
A-1	603	1	603	
A-2	609	1	609	
A-2A	611	1	611	
A-2B	607	1	607	
A-2C	607	1	607	
A-2D	607	1	607	
A-3	666	1	666	
A-4	617	1	617	
A-5	729	9	6,561	
A-6	557	9	5,013	
A-7	745	9	6,705	
A-8	671	9	6,039	
A-9	689	1	689	
A-10	725	1	725	
A-11	813	1	813	
Total - 1 Bed Unit		47	31,472	670
1 BEDROOM/DEN UNITS				
D-1	862	1	862	
D-2	769	1	769	
D-3	864	1	864	
D-4	825	6	4,950	
D-5	744	1	744	
D-6	786	1	786	
D-7	778	1	778	
Total 1 Bed/Den Unit		12	9,753	813
2 BEDROOM UNITS				
B-1	860	9	7,740	
Total 2 Bed Units		9	7,740	860
Total Units		118	76,761	651
RETAIL SPACE				
Retail Area			8,195	
Retail Storage Area			269	
Total			8,464	
STORAGE UNITS				
	Quantity		Total Gross Area	
2nd Floor	21		620	
3rd Floor	33		1209	
4th Floor	21		620	
Total	75		2,449	

LE JEUNE ROAD



THIRD FLOOR PLAN
SCALE: 3/32"=1'-0"



CORWILARCHITECTS
4210 LAGUNA ST. CORAL GABLES FL. 33146
LIC. NO. AA-C002151 T.305.448.7383

PROJECT:
GABLES LIVING
390 BIRD ROAD
CORAL GABLES
FLORIDA 33146

OWNER:

THIRD FLOOR PLAN

PHASE
PLANNING BOARD
SUBMITTAL

REVISIONS

SEAL

THE DRAWINGS IS THE PROPERTY OF CORWIL ARCHITECTS INC.
UNLESS OTHERWISE PROVIDED FOR BY CONTRACT, THE CONTENTS OF THIS DRAWINGS ARE CONFIDENTIAL
AND SHALL NOT BE TRANSMITTED TO ANY OTHER PARTY
EXCEPT AS AGREED TO BY THE ARCHITECT/ ENGINEERS.

DATE: JANUARY 2018

JOB NO. 2016-54

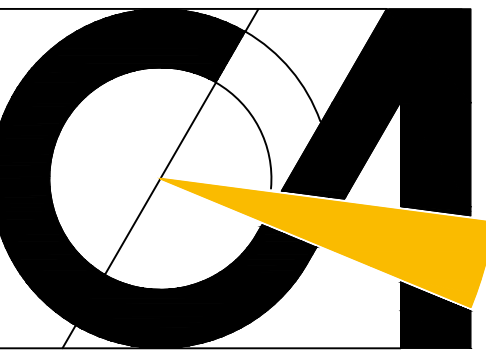
DRAWN BY M.C./G.L/MA

APPR BY AMC

FILE

SHEET NUMBER:

A-2.03



CORWILARCHITECTS
 4210 LAGUNA ST. CORAL GABLES FL. 33146
 LIC. NO. AA-C002151 T.305.448.7383

PROJECT:
GABLES LIVING
 390 BIRD ROAD
 CORAL GABLES
 FLORIDA 33146

OWNER:

FOURTH FLOOR PLAN

PHASE
 PLANNING BOARD
 SUBMITTAL

REVISIONS

SEAL

THE DRAWINGS IS THE PROPERTY OF CORWIL ARCHITECTS INC.
 UNLESS OTHERWISE PROVIDED FOR BY CONTRACT,
 THE CONTENTS OF THIS DRAWINGS ARE CONFIDENTIAL
 AND SHALL NOT BE TRANSMITTED TO ANY OTHER PARTY
 EXCEPT AS AGREED TO BY THE ARCHITECT/ ENGINEERS.

DATE: JANUARY 2018

JOB NO. 2016-54

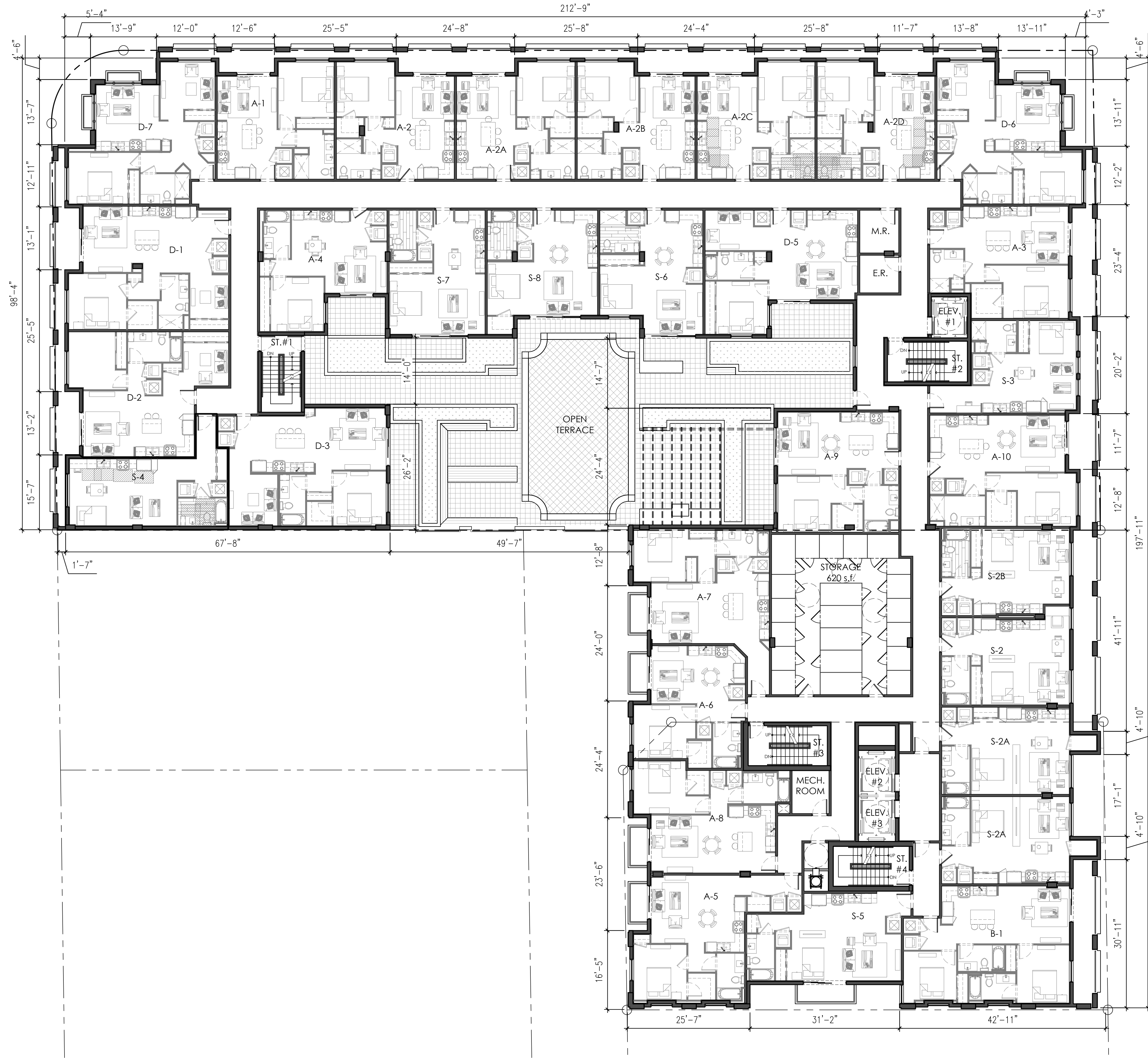
DRAWN BY M.C./G.L./MA

APPR BY AMC

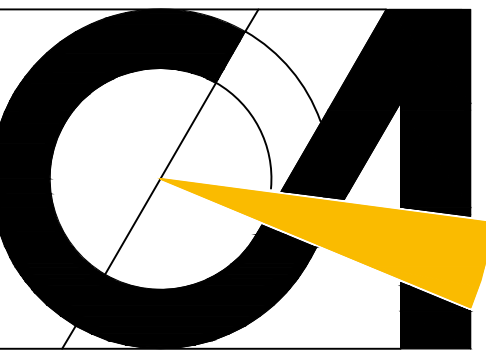
FILE

SHEET NUMBER:

A-2.04



FOURTH FLOOR PLAN
 SCALE: 3/32"=1'-0"

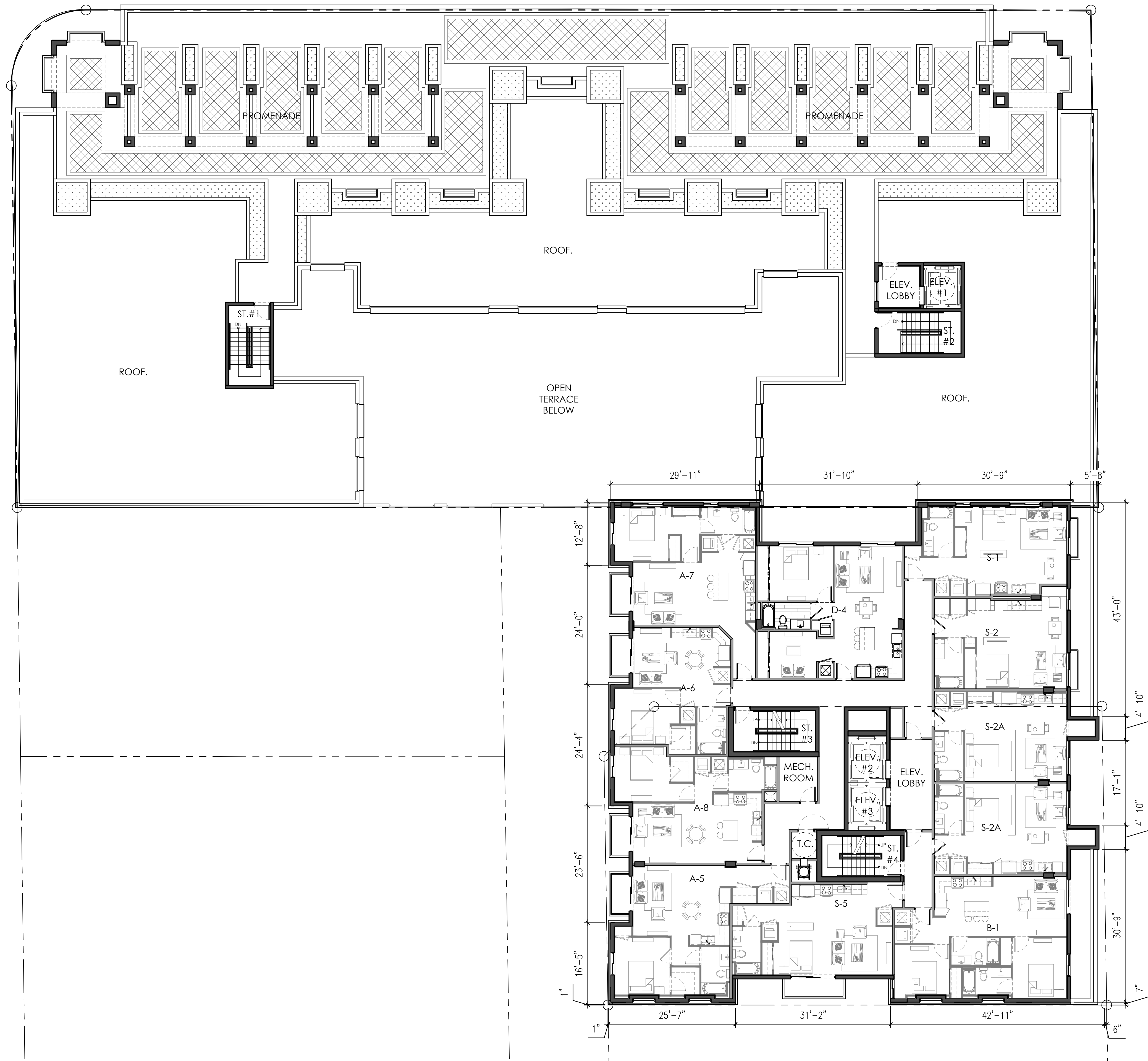


CORWILARCHITECTS
 4210 LAGUNA ST. CORAL GABLES FL. 33146
 LIC. NO. AA-C002151 T. 305.448.7383

PROJECT:
GABLES LIVING
 390 BIRD ROAD
 CORAL GABLES
 FLORIDA 33146

OWNER:

FIFTH FLOOR PLAN



PHASE
 PLANNING BOARD
 SUBMITTAL

REVISIONS

SEAL

THIS DRAWING IS THE PROPERTY OF CORWIL ARCHITECTS INC. UNLESS OTHERWISE PROVIDED FOR BY CONTRACT. THE CONTENTS OF THIS DRAWING ARE CONFIDENTIAL AND SHALL NOT BE TRANSMITTED TO ANY OTHER PARTY EXCEPT AS AGREED TO BY THE ARCHITECT/ENGINEERS.

DATE: JANUARY 2018

JOB NO. 2016-54

DRAWN BY M.C./G.L./MA

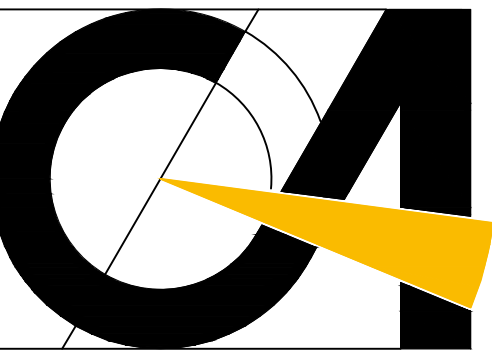
APPR BY AMC

FILE

SHEET NUMBER:

A-2.05

FIFTH FLOOR PLAN
 SCALE: 3/32" = 1'-0"

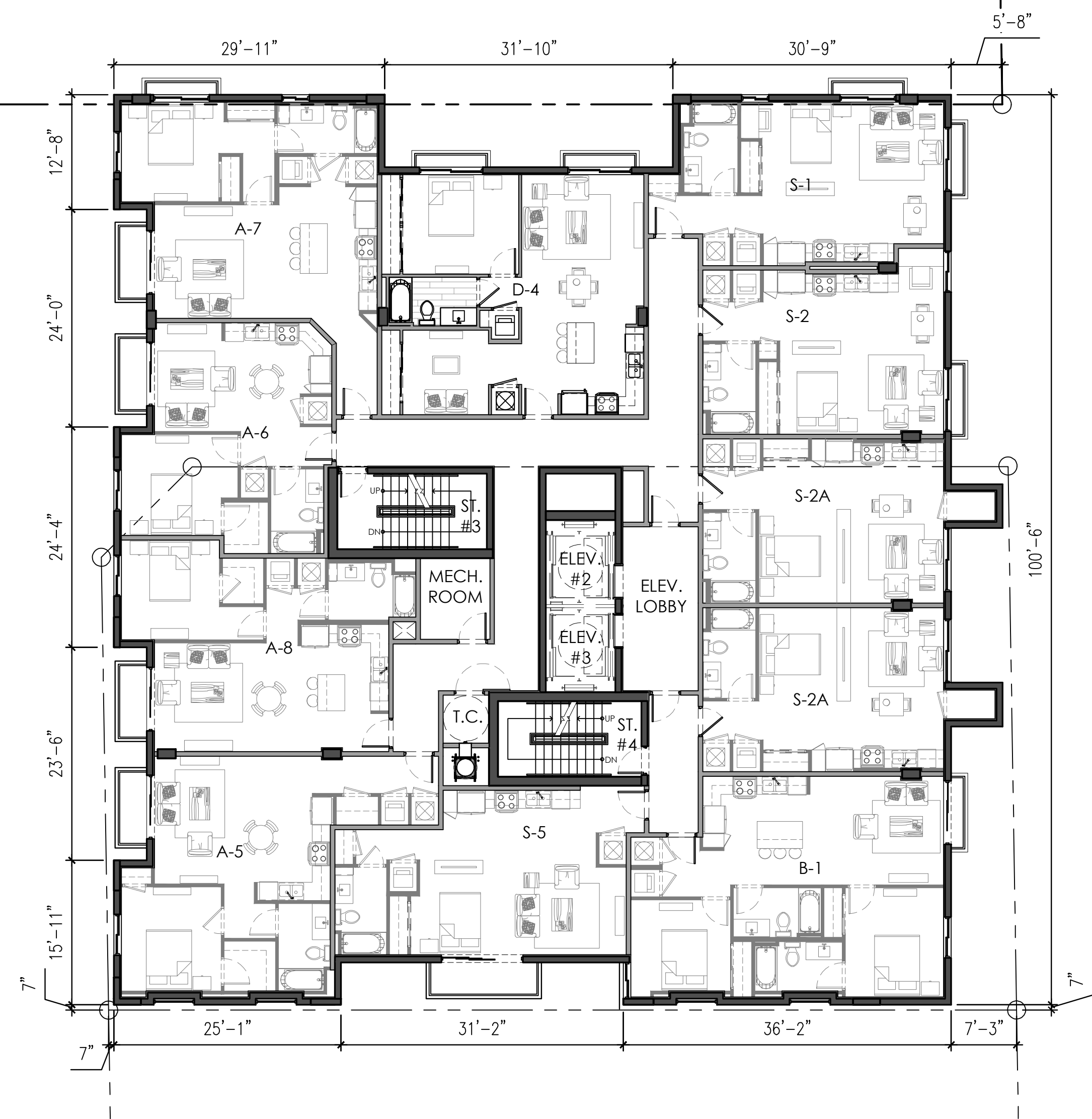


CORWILARCHITECTS
 4210 LAGUNA ST. CORAL GABLES FL. 33146
 LIC. NO. AA-C002151 T. 305.448.7383

PROJECT:
GABLES LIVING
 390 BIRD ROAD
 CORAL GABLES
 FLORIDA 33146

OWNER:

LE JEUNE ROAD



6TH THRU 8TH FLOOR PLAN

PHASE
 PLANNING BOARD
 SUBMITTAL

REVISIONS

SEAL

THIS DRAWING IS THE PROPERTY OF CORWIL ARCHITECTS INC. UNLESS OTHERWISE PROVIDED FOR BY CONTRACT. THE CONTENTS OF THIS DRAWING ARE CONFIDENTIAL AND SHALL NOT BE TRANSMITTED TO ANY OTHER PARTY EXCEPT AS AGREED TO BY THE ARCHITECT/ENGINEERS.

DATE: JANUARY 2018

JOB NO. 2016-54

DRAWN BY M.C./G.L./MA

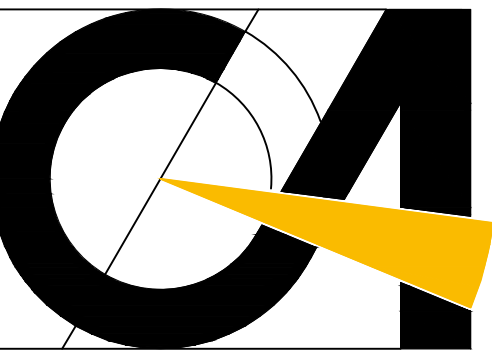
APPR BY AMC

FILE

SHEET NUMBER:

A-2.06

6TH THRU 8TH FLOOR PLAN
 SCALE: 3/32" = 1'-0"

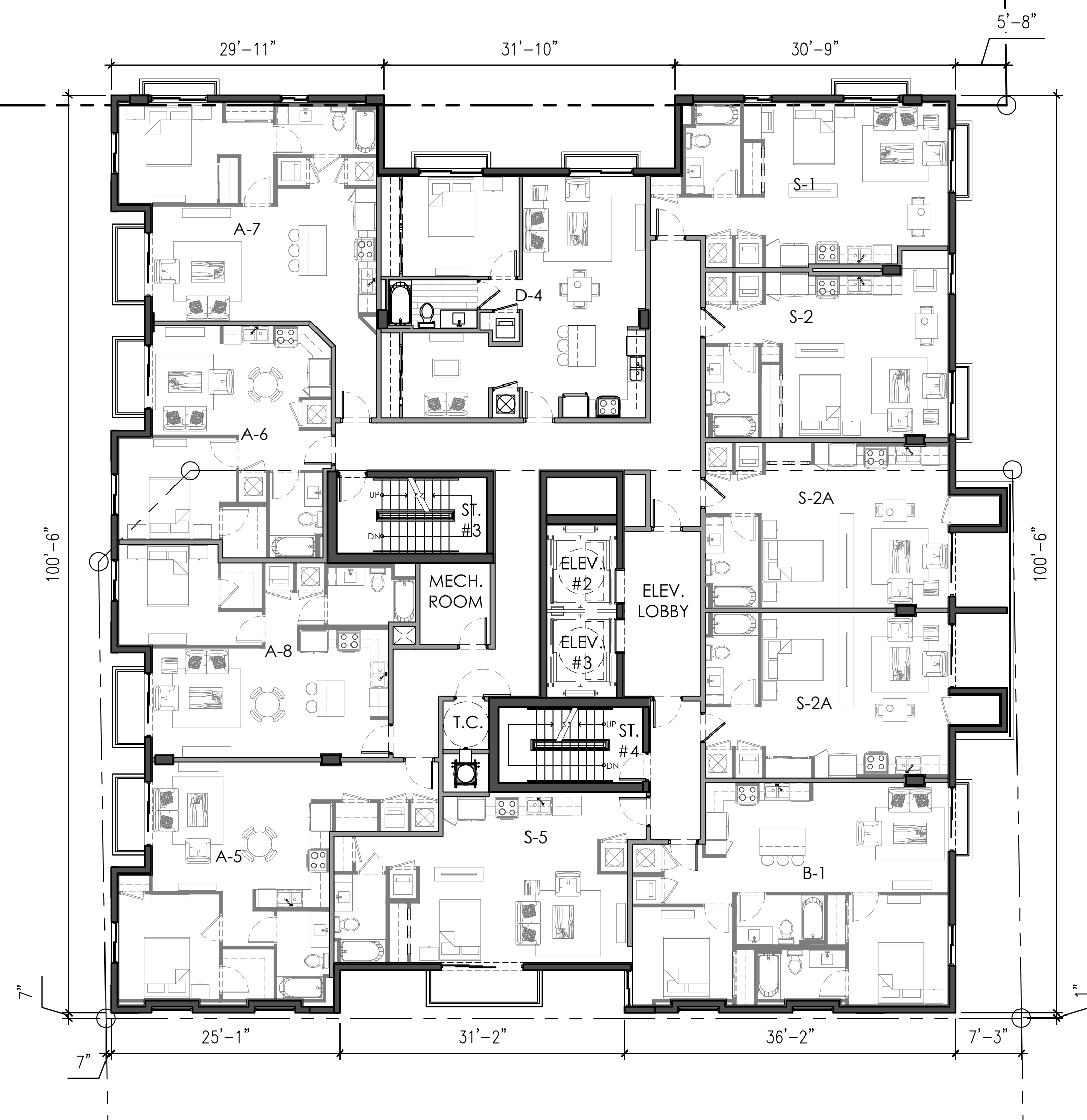


CORWILARCHITECTS
 4210 LAGUNA ST. CORAL GABLES FL. 33146
 LIC. NO. AA-C002151 T. 305.448.7383

PROJECT:
GABLES LIVING
 390 BIRD ROAD
 CORAL GABLES
 FLORIDA 33146

OWNER:

LE JEUNE ROAD



9TH FLOOR PLAN

PHASE
 PLANNING BOARD
 SUBMITTAL

REVISIONS

SEAL

THIS DRAWING IS THE PROPERTY OF CORWIL ARCHITECTS INC.
 UNLESS OTHERWISE PROVIDED FOR BY CONTRACT,
 THE CONTENTS OF THIS DRAWING ARE CONFIDENTIAL
 AND SHALL NOT BE TRANSMITTED TO ANY OTHER PARTY
 EXCEPT AS AGREED TO BY THE ARCHITECT/ENGINEERS.

DATE: JANUARY 2018

JOB NO. 2016-54

DRAWN BY M.C./G.L./MA

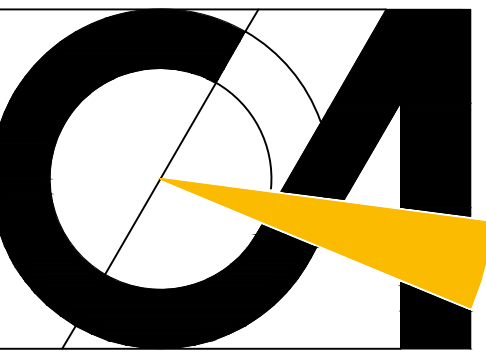
APPR BY AMC

FILE

SHEET NUMBER:

A-2.07

9TH FLOOR PLAN
 SCALE: 3/32" = 1'-0"



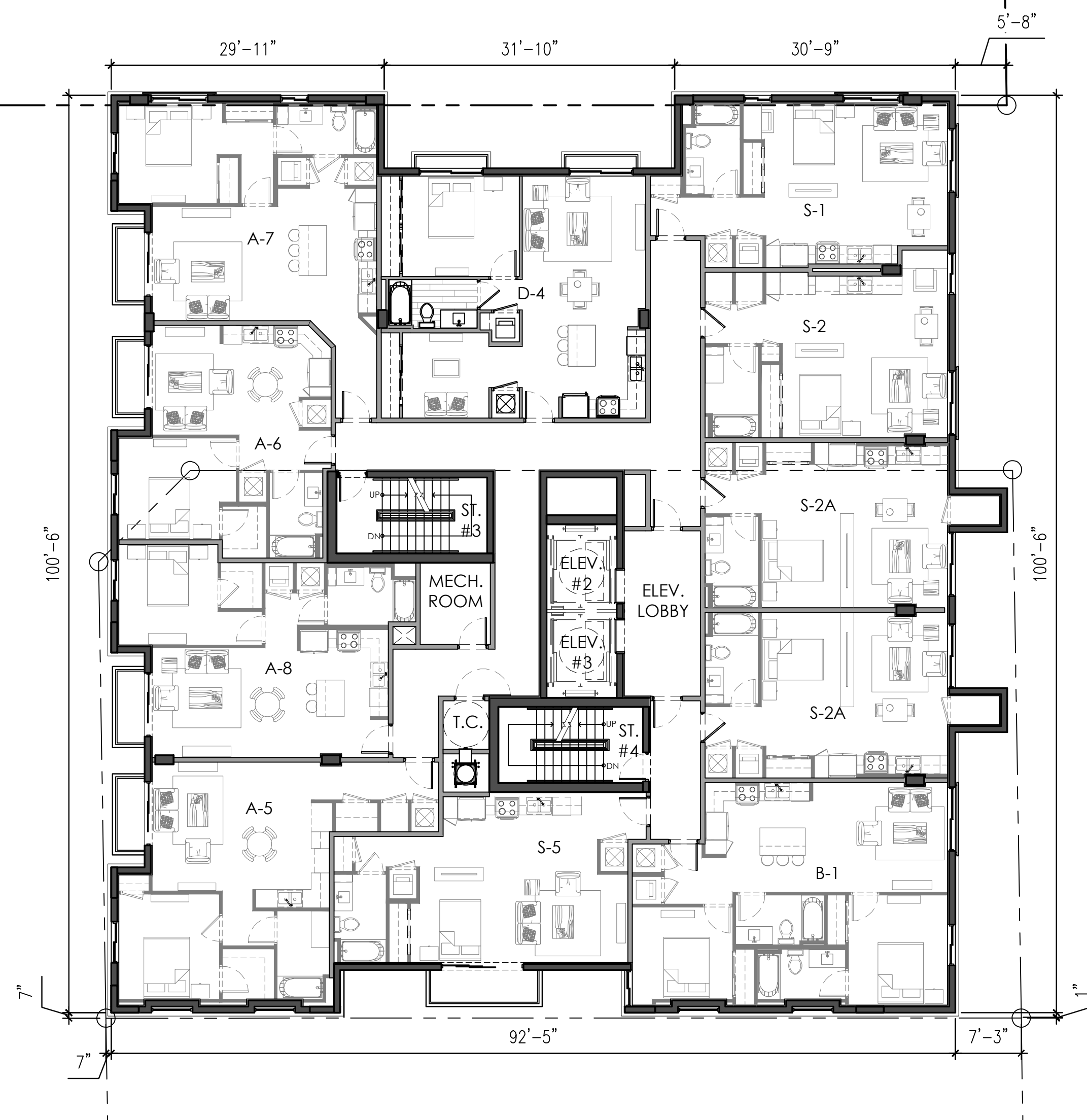
CORWILARCHITECTS
 4210 LAGUNA ST. CORAL GABLES FL. 33146
 LIC. NO. AA-C002151 T. 305.448.7383

PROJECT:
GABLES LIVING
 390 BIRD ROAD
 CORAL GABLES
 FLORIDA 33146

OWNER:

LE JEUNE ROAD

LAGUNA STREET



10TH FLOOR PLAN

PHASE
 PLANNING BOARD
 SUBMITTAL

REVISIONS

SEAL

THIS DRAWING IS THE PROPERTY OF CORWIL ARCHITECTS INC.
 UNLESS OTHERWISE PROVIDED FOR BY CONTRACT,
 THE CONTENTS OF THIS DRAWING ARE CONFIDENTIAL
 AND SHALL NOT BE TRANSMITTED TO ANY OTHER PARTY
 EXCEPT AS AGREED TO BY THE ARCHITECT/ENGINEERS.

DATE: JANUARY 2018

JOB NO. 2016-54

DRAWN BY M.C./G.L./MA

APPR BY AMC

FILE

SHEET NUMBER:

A-2.08

10TH FLOOR PLAN
 SCALE: 3/32" = 1'-0"