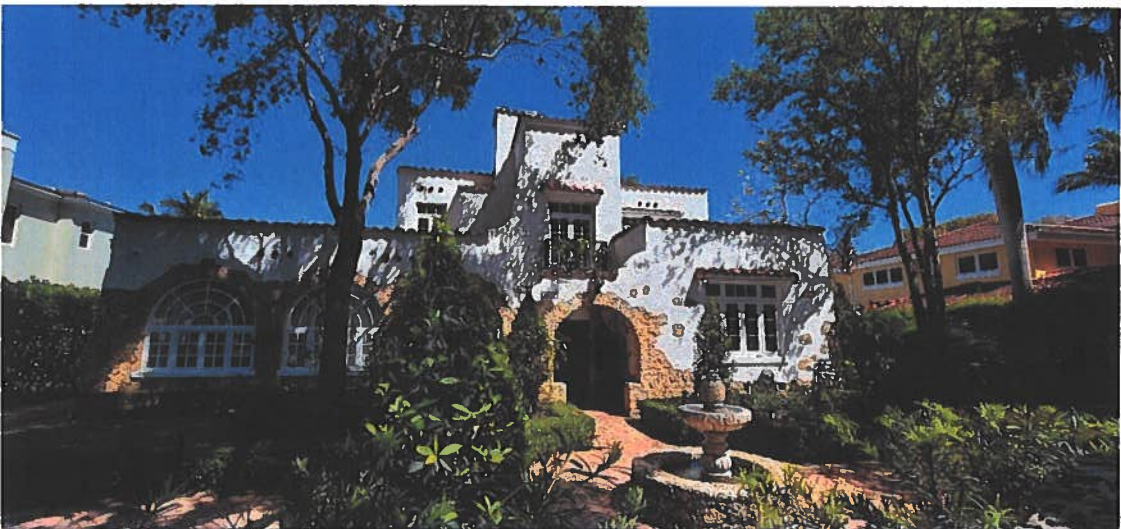


## PART TWO

### 2907 Columbus Boulevard ARCHITECTURAL FEATURES

#### Feature 1:





3.



4.



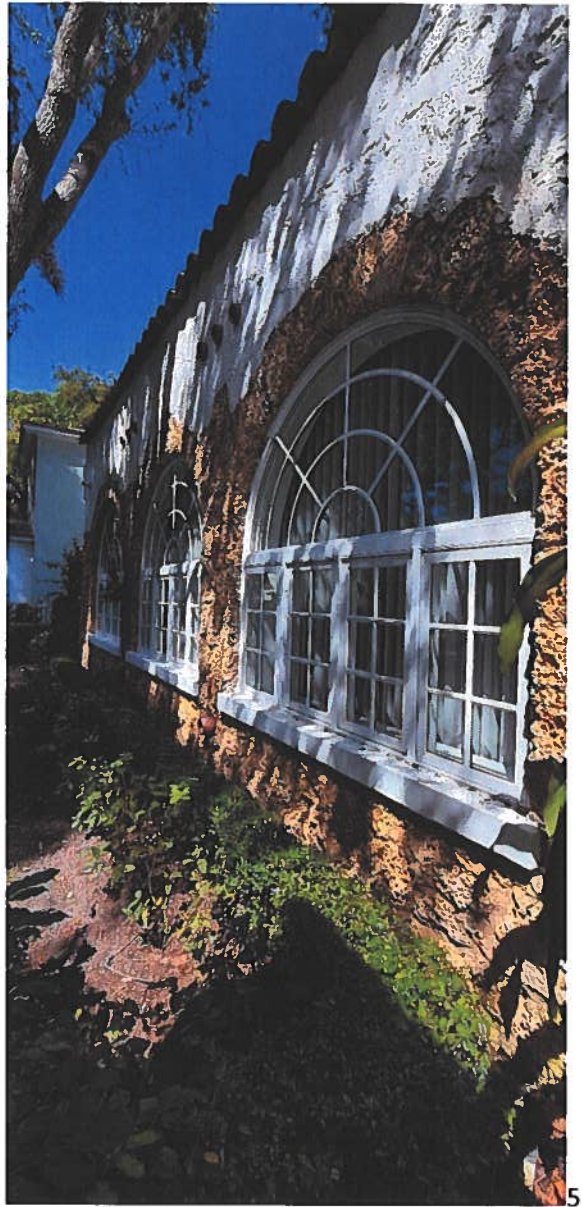
**Elevation: Front (west)**

**Photo Number: 1, 2, 3, 4**

**Plan Number: A-5, A-13, A-19**

**Description:** As described, the existing massing remained, all of the existing windows and doors were replaced in the original configuration (including transoms) and color as originally built (white). The tiled window awnings were removed only to leave the original ones. All decorative tiled window sills were removed.

## **Feature 2**



**Elevation: Front (west)**

**Photo Number: 5**

**Plan Number: A-5, A-13, A-19**

**Description: Arched windows with coral rock frames remained and window frames were modified to white. All decorative tiled window sills were also removed.**

### **Feature 3:**



6.



7.



**Elevation: Rear (east)**

**Photo Number: 6,7**

**Plan Number: A-6, A-13, A-14, A-15, A-17**

**Description: A covered terrace was added however all of the existing windows and doors were replaced in the original configuration (including transoms) and color as originally built (white). All decorative tiled window sills were removed.**

### **Feature 4:**



Elevation: Side (north)

Photo Number: 8,9

Plan Number: A-6, A-14, A-18

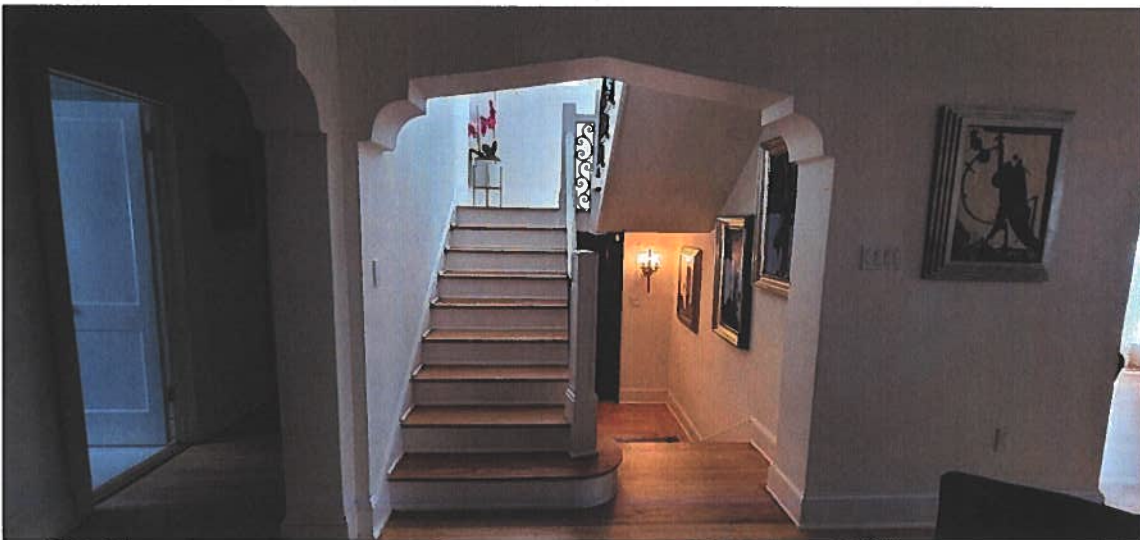
Description: Proposed windows in kitchen expansion followed similar configuration to existing windows. All of the existing windows and doors were replaced in the original configuration (including transoms) and color as originally built (white). The tiled window awnings were removed . All decorative tiled window sills were also removed.

### Feature 5:

Interior



10.



11.





12.



13.

**Room: Living / Dining**

**Photo Number: 10, 11, 12, 13**

**Plan Number: A-10**

**Description: Decorative arches, wood floor, baseboards and crown moldings were preserved**

**Additional Photographs of finished product:**











