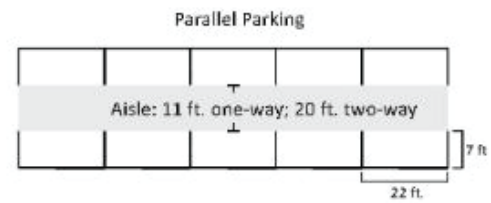


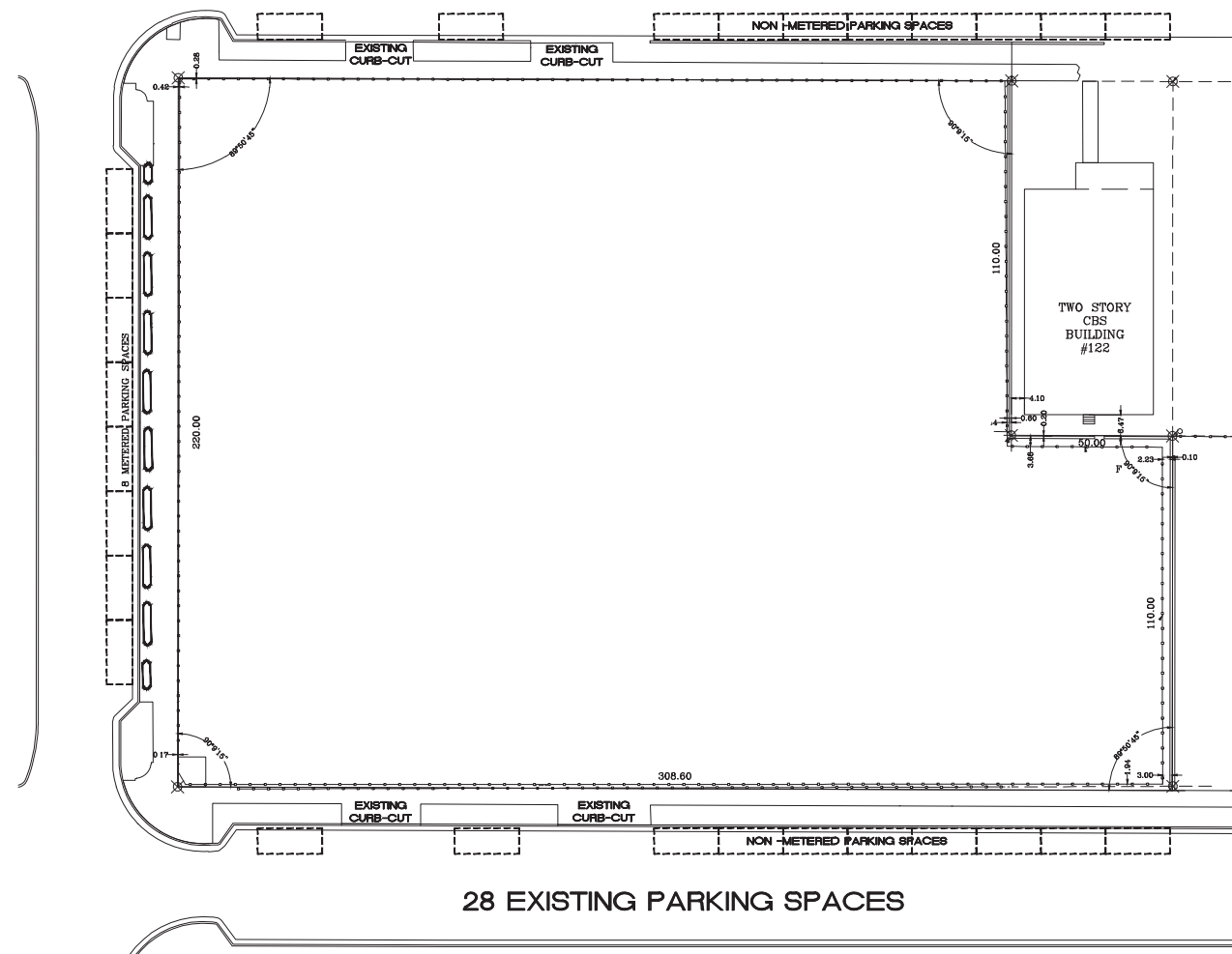
(a)*



CORAL GABLES ZONING CODE:
ARTICLE 10. PARKING AND ACCESS,
SECTION 10-102.3 (a)

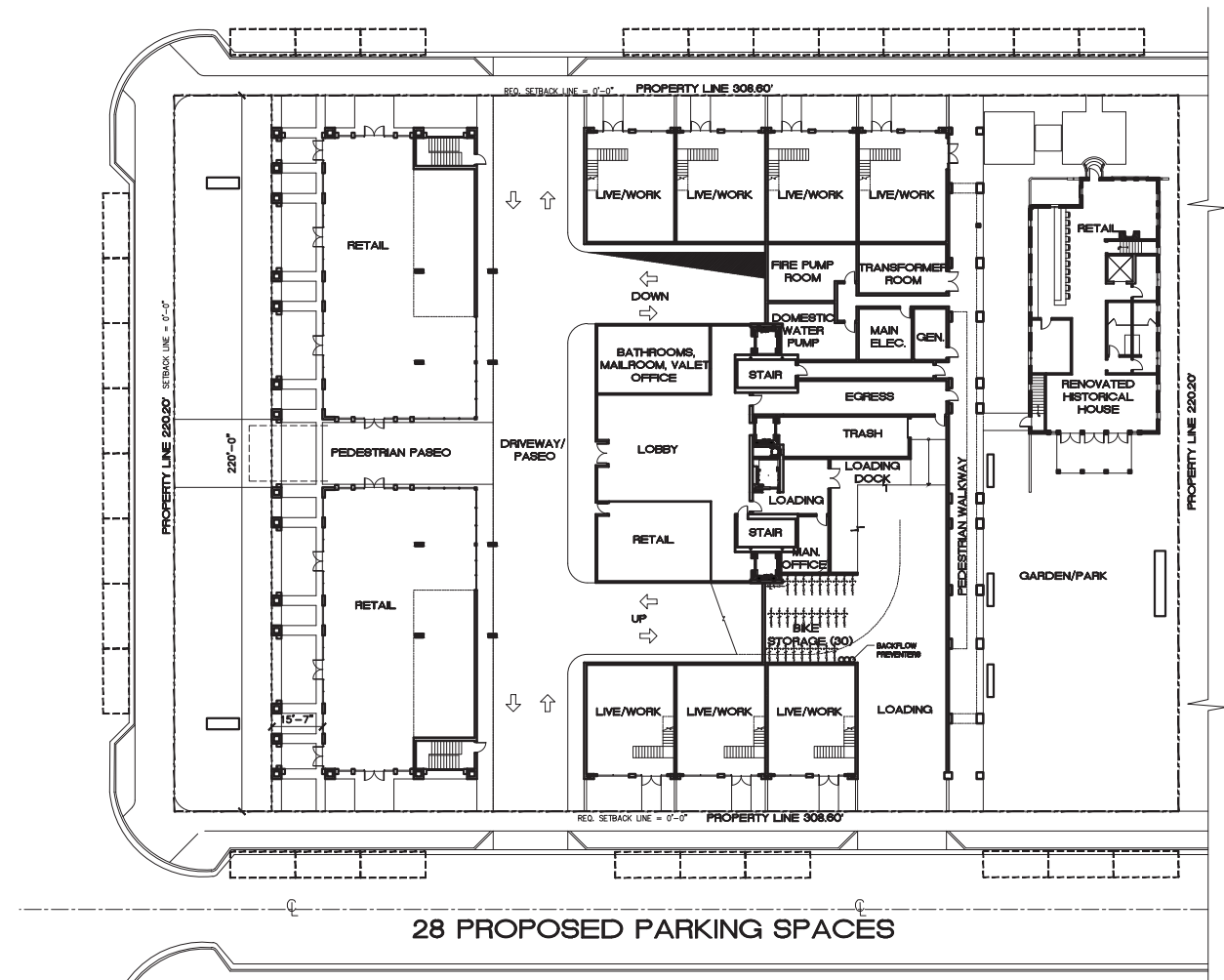


PICTURE OF EXISTING CURB-CUT ON SITE



28 EXISTING PARKING SPACES

EXISTING

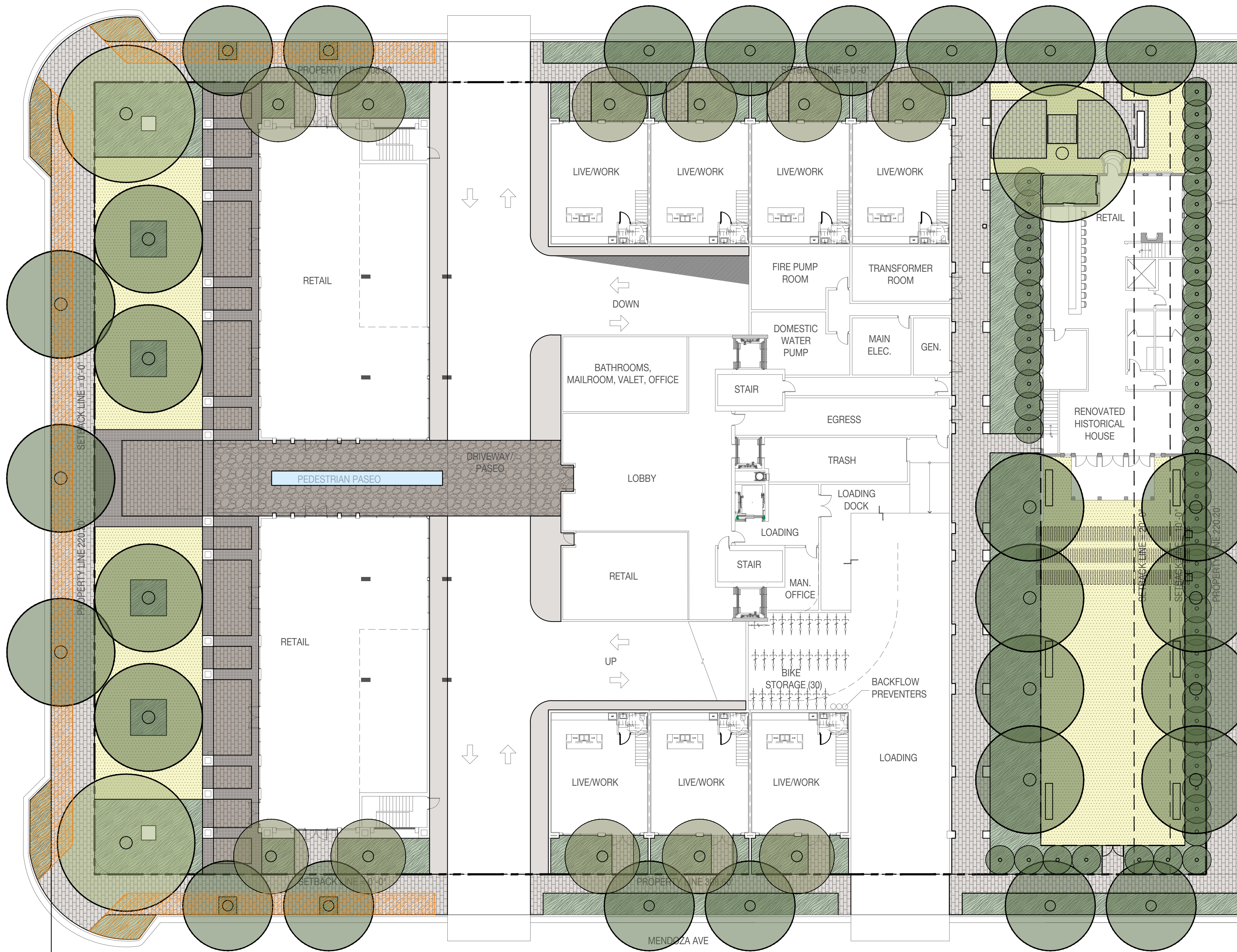


28 PROPOSED PARKING SPACES

PROPOSED



PONCE DE LEON BLVD
112'-0" DEDICATED
PUBLIC RIGHT-OF-WAY



0 8' 16' 32'
SCALE: 1/16" = 1'-0"